



Application for Development Consent

Application Reference Number: WWO10001

Examining Authority's Second Written Round of Questions and Requests for Information

Supporting Appendices

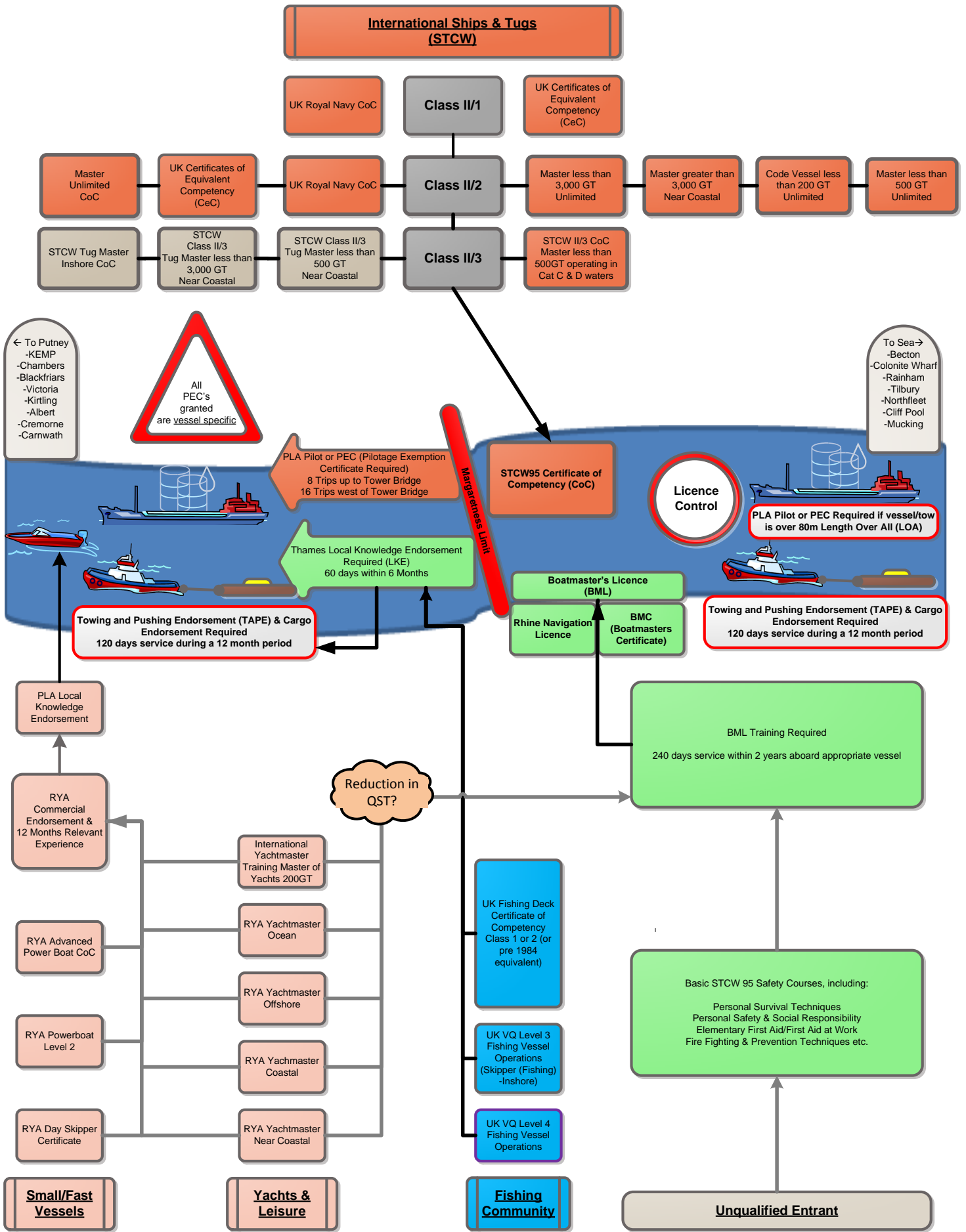
Marine Routes of Entry to Project V3.0

Doc Ref: **APP61.04.01**



APP61.04.01 Marine Routes of Entry to Project V3.0

Routes of Entry for Suitably Trained Masters



Copyright notice

Copyright © Thames Water Utilities Limited January 2014.
All rights reserved.

Any plans, drawings, designs and materials (materials) submitted by Thames Water Utilities Limited (Thames Water) as part of this application for Development Consent to the Planning Inspectorate are protected by copyright. You may only use this material (including making copies of it) in order to (a) inspect those plans, drawings, designs and materials at a more convenient time or place; or (b) to facilitate the exercise of a right to participate in the pre-examination or examination stages of the application which is available under the Planning Act 2008 and related regulations. Use for any other purpose is prohibited and further copies must not be made without the prior written consent of Thames Water.

Thames Water Utilities Limited

Clearwater Court, Vastern Road, Reading RG1 8DB

The Thames Water logo and Thames Tideway Tunnel logo are © Thames Water Utilities Limited. All rights reserved.

