

521000

522000

523000

416000

415000



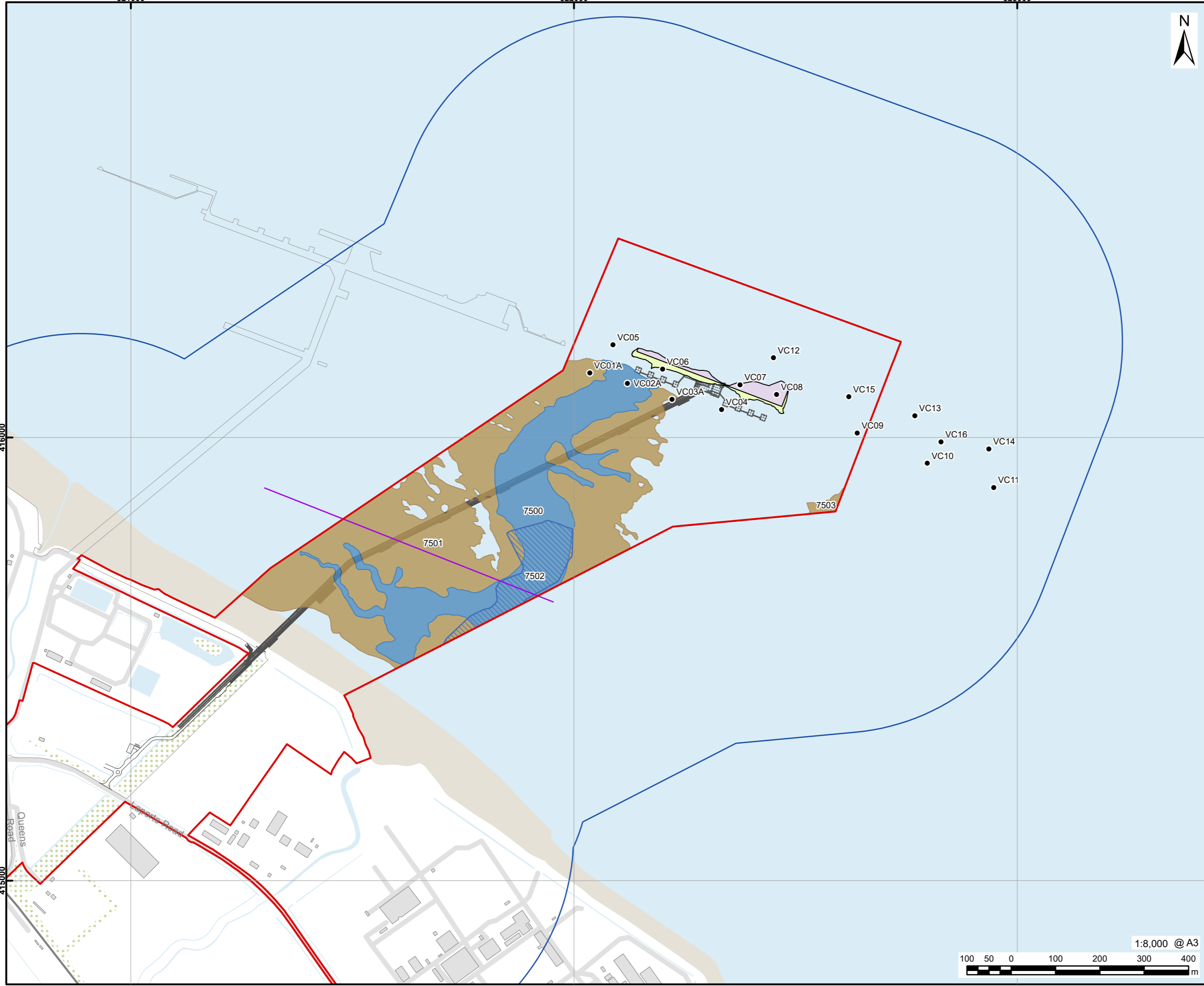
AECOM

PROJECT
Immingham Green Energy Terminal

CLIENT
Associated British Ports

CONSULTANT
AECOM Limited
5th Floor
2 City Walk
Leeds, LS11 9AR
www.aecom.com

- LEGEND**
- Site boundary
 - Study area
 - Proposed layout
 - Extent of dredged pocket at -14.5mCD
 - Dredged pocket side slopes at 1:10
 - Vibrocore locations
 - Data example location
 - Channel (SBP)
 - Channel (MBES)
 - Possible peat outcrop



This drawing has been prepared for the use of AECOM's client. It may not be used, modified, reproduced or relied upon by third parties, except as agreed by AECOM or as required by law. AECOM accepts no responsibility, and denies any liability whatsoever, to any party that uses or relies on this drawing without AECOM's express written consent. Do not scale this document. All measurements must be obtained from the stated dimensions.

NOTES
Contains Ordnance Survey data
© Crown copyright and database right 2024.

ISSUE PURPOSE
Environmental Statement

PROJECT NUMBER
60673509

DEVELOPMENT CONSENT ORDER NO
TR030008

FIGURE TITLE
Palaeogeographic features of archaeological potential

FIGURE NUMBER
Figure 15.2

