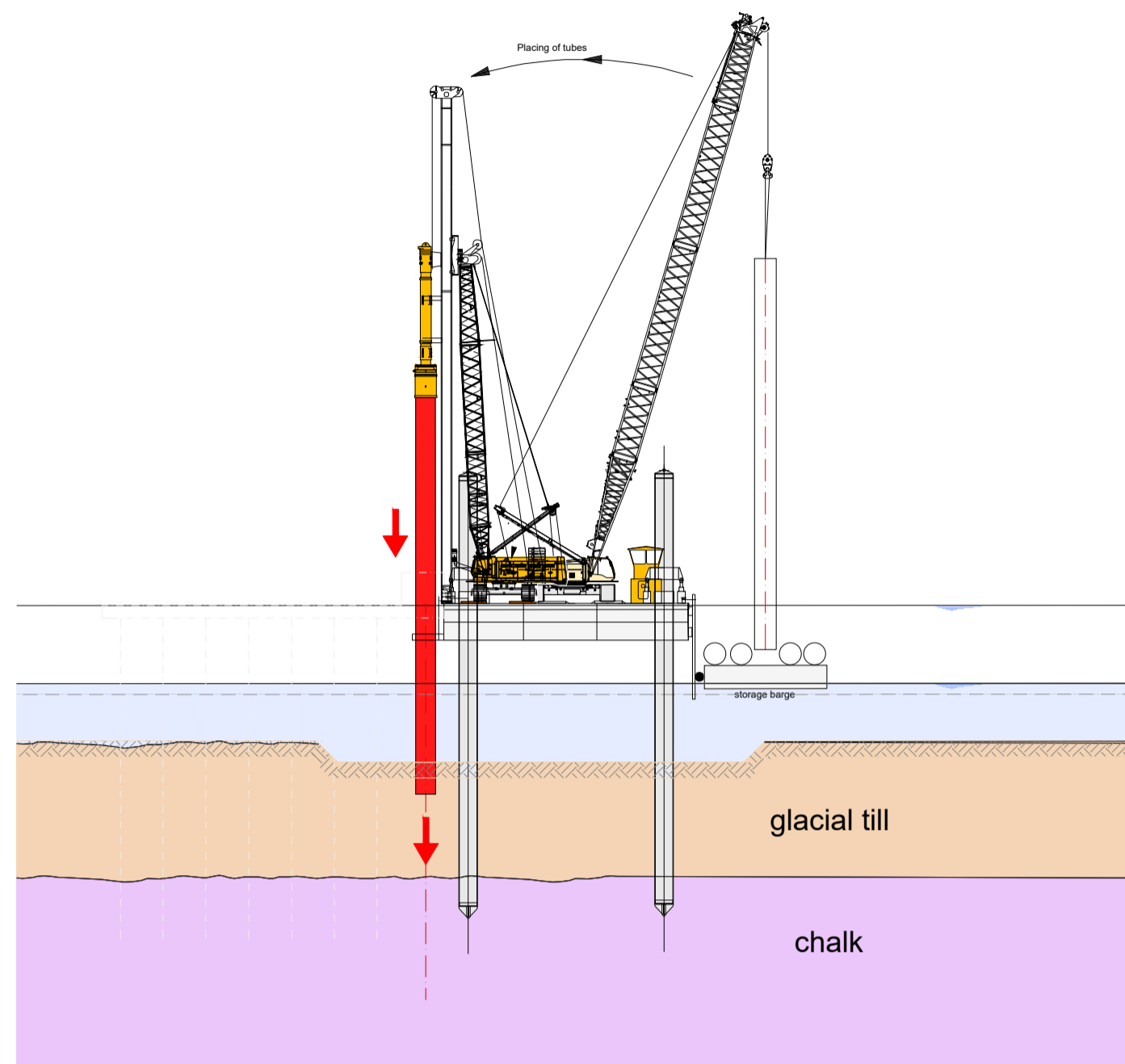


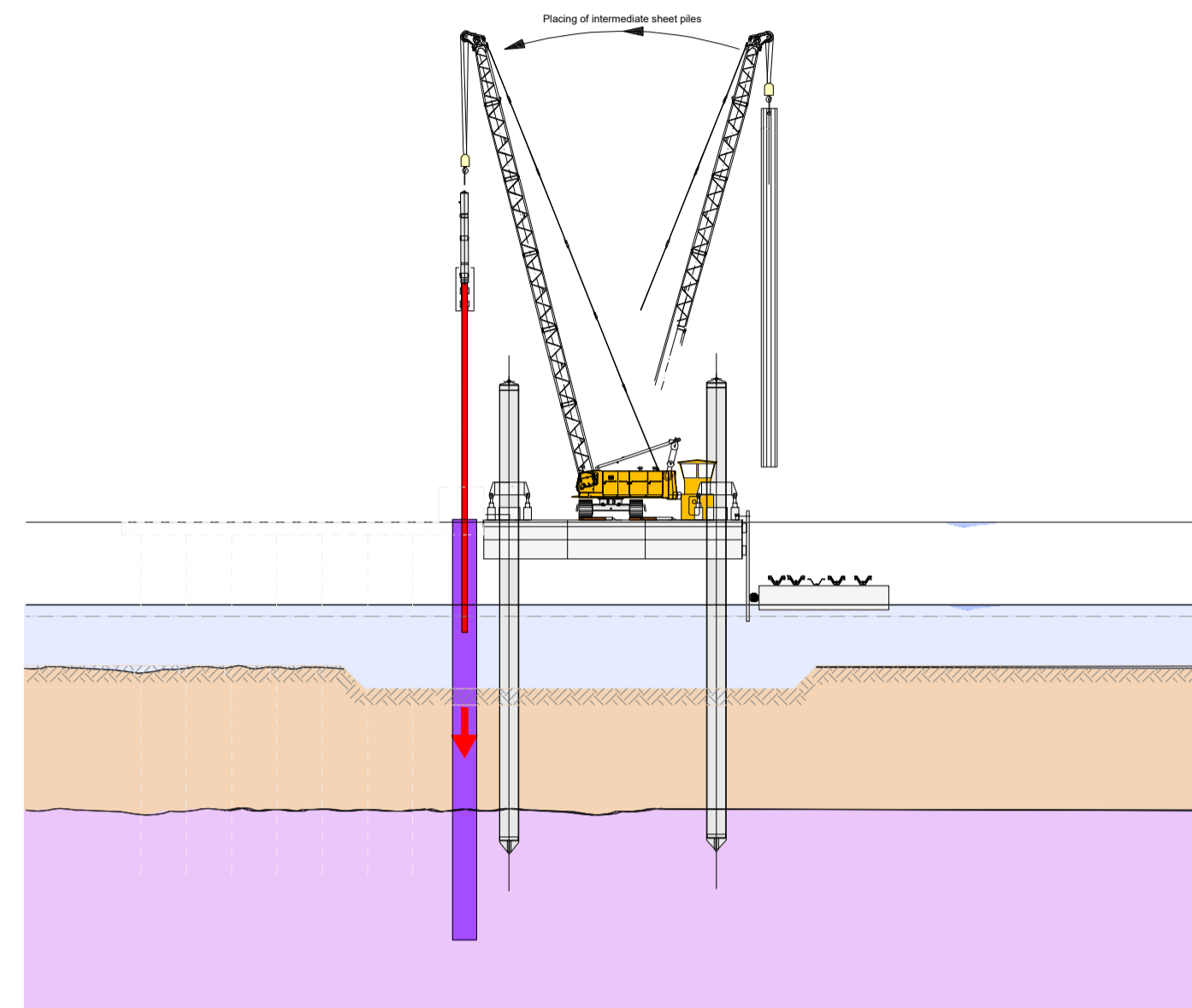
### STAGE A

- Pre-dredge to provide access for marine plant
- Driving of tubes



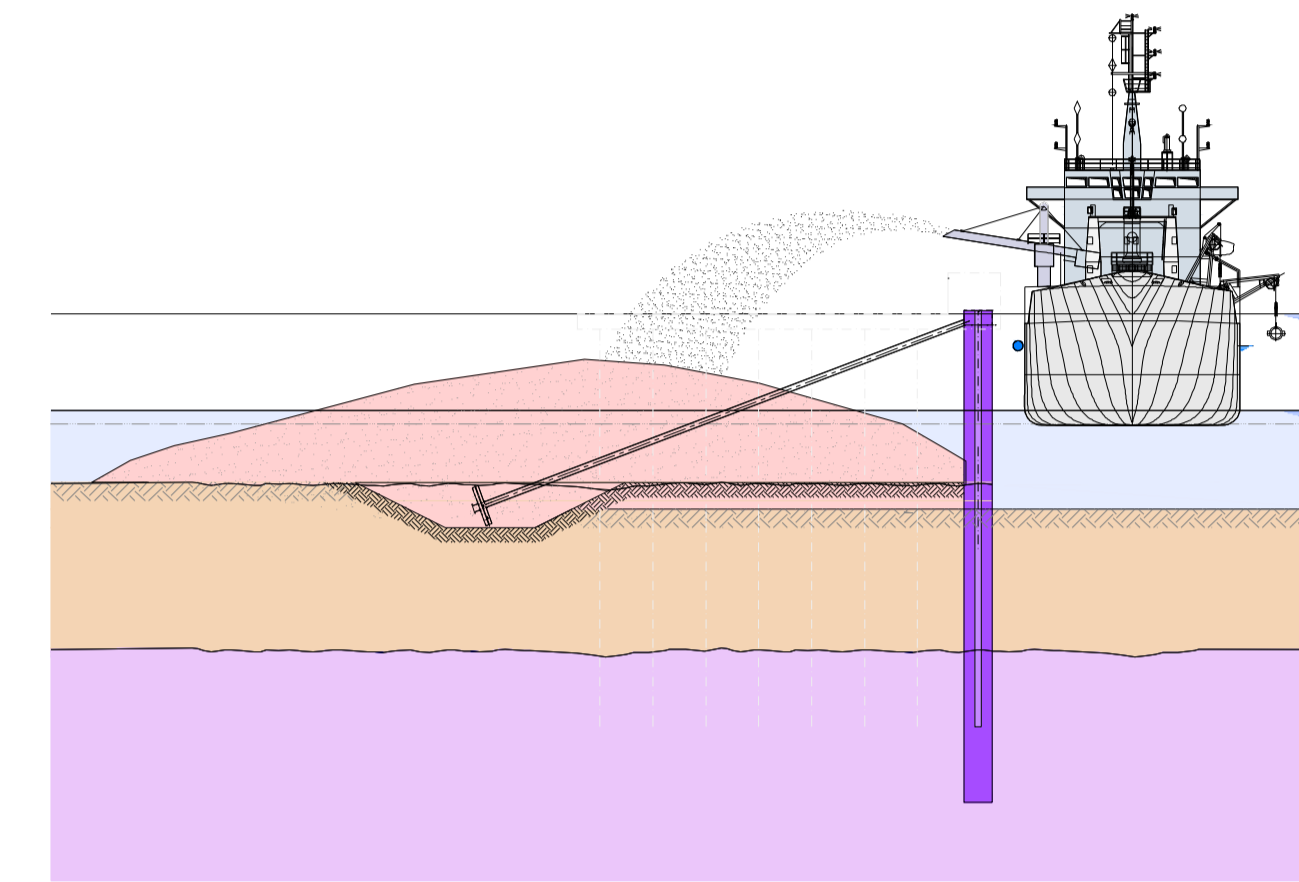
### STAGE B

- Driving of intermediate sheet piles



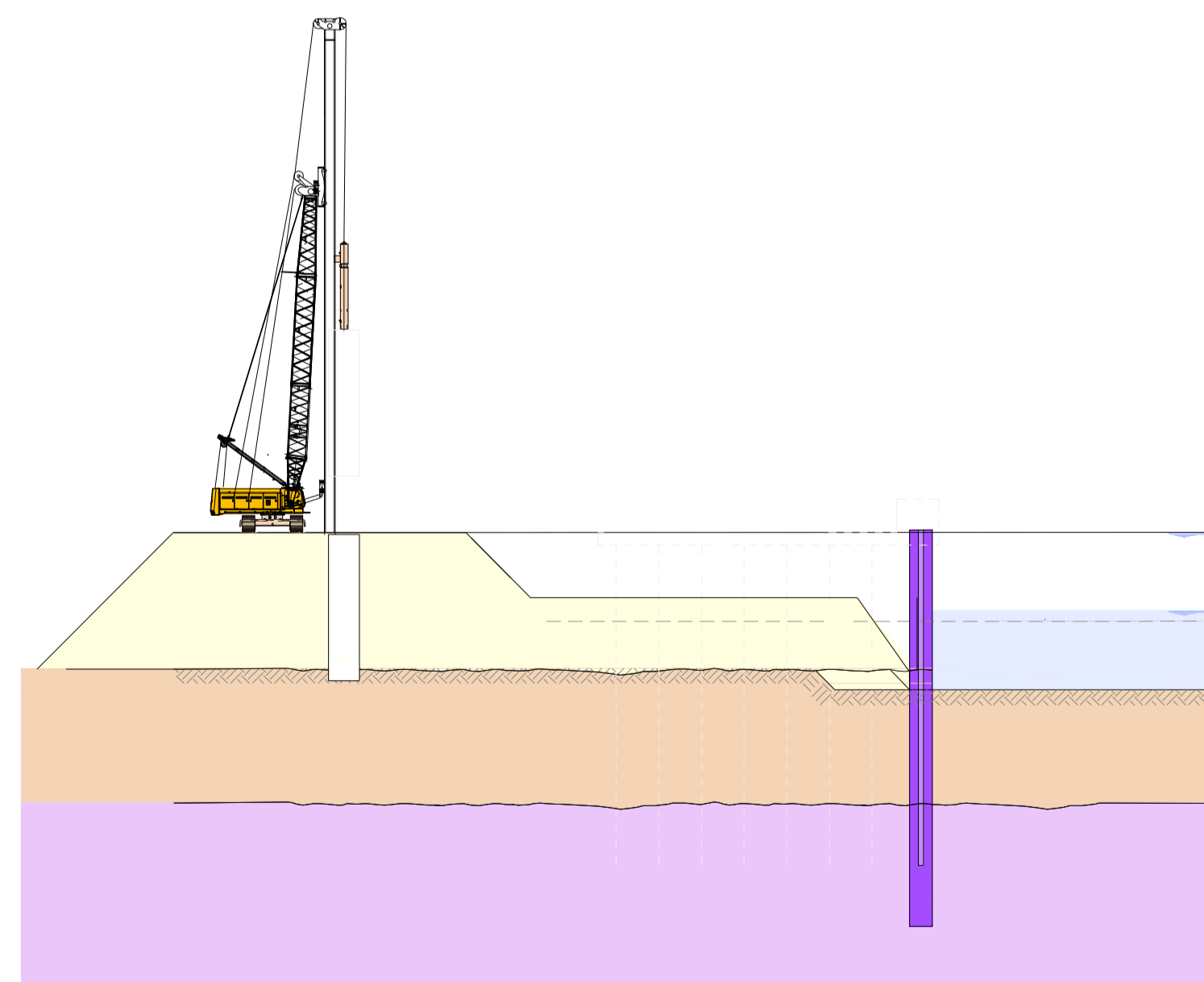
### STAGE Ca (Flap Anchor Option)

- Dredge Anchor Trench
- Flap Anchor Installed
- Backfilling



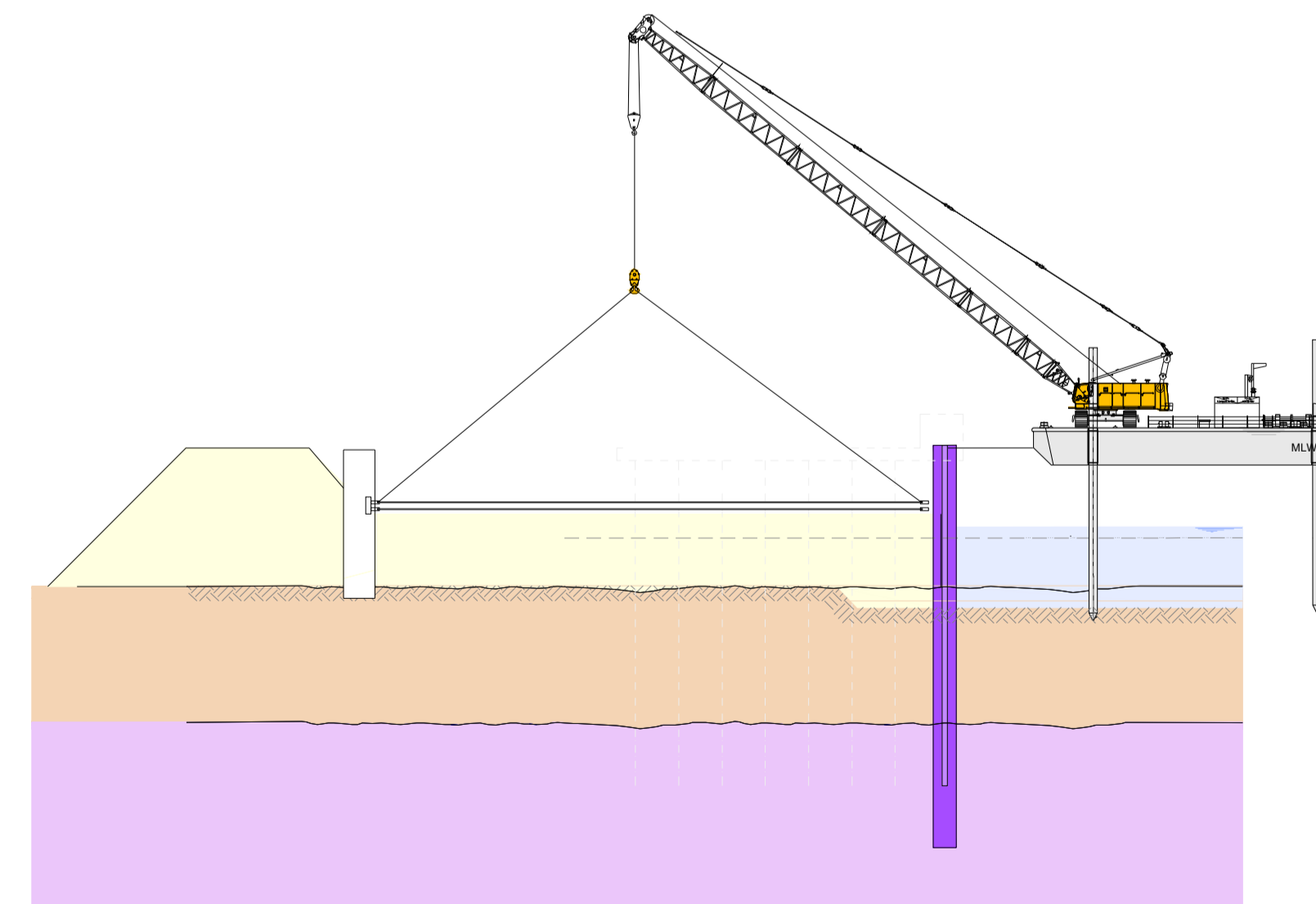
### STAGE Cb (Anchor Pile Option)

- Backfill
- Install anchor piles



### STAGE D (Anchor Pile Option)

- Locally excavate & Install tie bars



Key & Notes

- Notes**
- All dimensions are in metres (m) unless noted otherwise.
  - All levels are in metres (m) above Ordnance Datum (mAOD) unless noted otherwise.
  - Details based on preliminary design
  - Levels given for the Approach Channel and the Harbour Bed are the maximum maintained levels

Rev.	Date	Comments	Des.	Chk.	App.
C	23/06/2021	Project Description Updated	DIA	RC	RC
B	09/04/2021	Stages Updated	Rev	RC	RC
A	12/02/2021	Issued for Planning	DIA	RC	RC

**able**  
www.ableuk.com

ABLE UK Limited  
ABLE House  
Bilingham Reach Industrial Estate  
Teesdale, TS13 3JY  
United Kingdom  
Tel: +44(0)1642 806080  
Fax: +44(0)1642 655655

Project:  
**(TR030006) ABLE Marine Energy Park**

Client:  
**ABLE UK Limited**

Drawing Title:  
**Indicative Sequence Cross Section 1/2**

**PLANNING**

Scale:	Drawn By:	Checked By:	Approved By:
NTS@A1	D Almeida	R Crum	R Crum
Date:	04/12/2020	12/02/2021	12/02/2021
Drawing No:	AME-036-10012	Revision:	C

DO NOT SCALE