

Appendix 1.1.3.



Report - Ward 2016: Tilbury Riverside and Thurrock Park (Ward (2016))

Emergency hospital admissions

Emergency Hospital Admissions, numbers, 2011/12 to 2015/16 (estimated from MSOA level data)

Indicator	Tilbury Riverside and Thurrock Park (Ward (2016))	Thurrock (Upper Tier Local Authority)	England
Emergency hospital admissions for all causes	2,703	58,558	26,930,251
Emergency hospital admissions for CHD*	73	1,739	688,090
Emergency hospital admissions for stroke	46	1,080	398,062
Emergency hospital admissions for MI*	35	865	335,723
Emergency hospital admissions for COPD*	104	1,682	583,448

Source: Public Health England, NHS Digital © Copyright 2017

* CHD: Coronary Heart Disease; MI: Myocardial Infarction (heart attack); COPD: Chronic Obstructive Pulmonary Disease

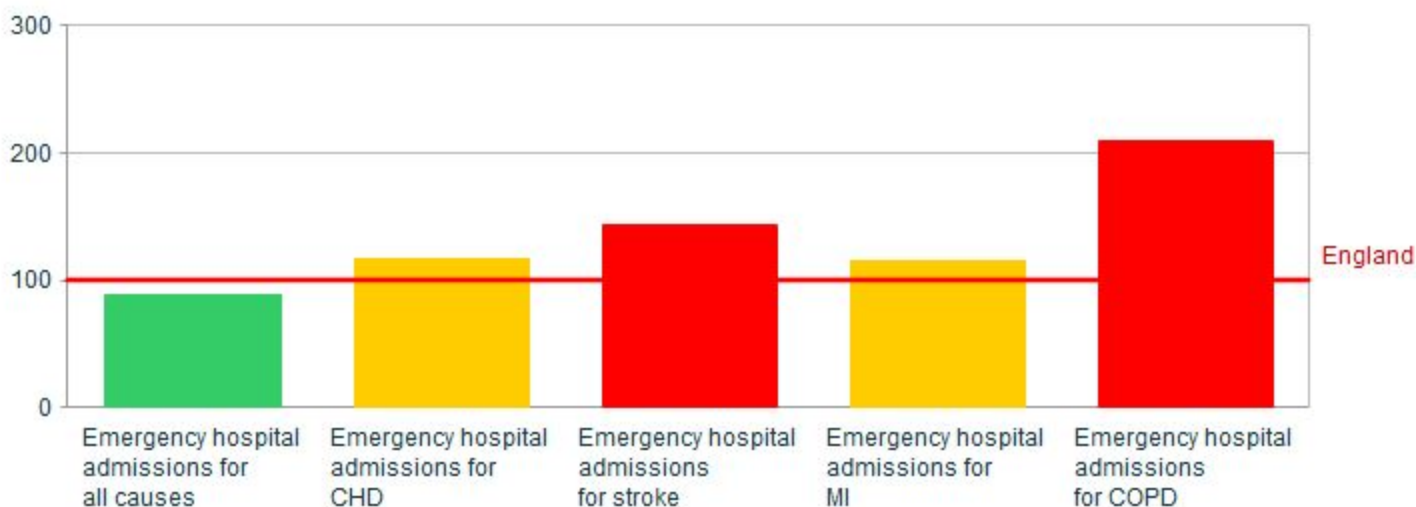
Emergency Hospital Admissions, Standardised Admission Ratios (SAR), 2011/12 to 2015/16 (estimated from MSOA data)

Indicator	Tilbury Riverside and Thurrock Park (Ward (2016))	Thurrock (Upper Tier Local Authority)	England
Emergency hospital admissions for all causes	88.7	78.4	100
Emergency hospital admissions for CHD	116.6	100.9	100
Emergency hospital admissions for stroke	143.3	113.4	100
Emergency hospital admissions for MI	115.6	103.3	100
Emergency hospital admissions for COPD	209	118.6	100

Source: Public Health England, NHS Digital © Copyright 2017

Emergency Hospital admissions, SAR, 2011/12 to 2015/16, Selection (comparing to England average)

■ Significantly better than England
 ■ Not significantly different
 ■ Significantly worse than England



Source: Public Health England, NHS Digital © Copyright 2017



Report - Ward 2016: Tilbury Riverside and Thurrock Park (Ward (2016))

Mortality and causes of death - all ages

Causes of deaths - all ages, numbers, 2011-2015

Indicator	Tilbury Riverside and Thurrock Park (Ward (2016))	Thurrock (Upper Tier Local Authority)	England
All causes	292	5,828	2,357,381
All cancer	72	1,769	666,658
All circulatory disease	78	1,603	646,138
Coronary heart disease	34	771	289,738
Stroke	21	383	165,375
Respiratory diseases	50	873	325,764

Source: Public Health England, produced from ONS data Copyright © 2017

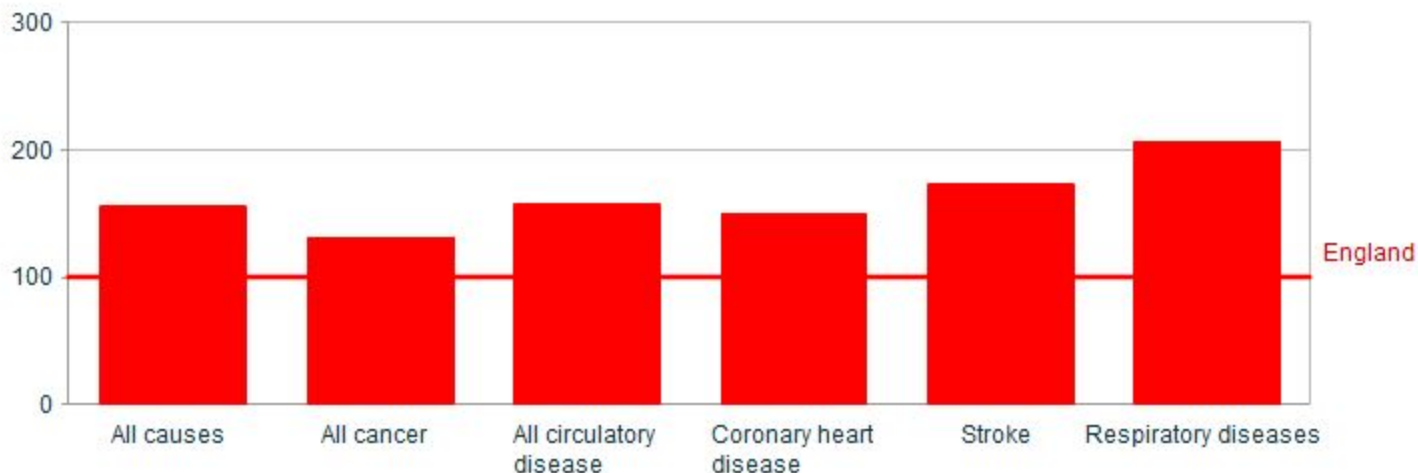
Causes of deaths - all ages, Standardised Mortality Ratios (SMR), 2011-2015

Indicator	Tilbury Riverside and Thurrock Park (Ward (2016))	Thurrock (Upper Tier Local Authority)	England
All causes	155.6	105.9	100
All cancer	130.9	110.7	100
All circulatory disease	157.5	108.4	100
Coronary heart disease	150	114.9	100
Stroke	173.1	103	100
Respiratory diseases	206.9	118.8	100

Source: Public Health England, produced from ONS data Copyright © 2017

Causes of deaths - all ages, SMR, 2011-2015, Selection (comparing to England average)

■ Significantly better than England
 ■ Not significantly different
 ■ Significantly worse than England



Source: Public Health England, produced from ONS data Copyright © 2017



Report - Ward 2016: Tilbury Riverside and Thurrock Park (Ward (2016))

Mortality and causes of death - premature mortality

Causes of deaths - premature mortality, numbers, 2011-2015

Indicator	Tilbury Riverside and Thurrock Park (Ward (2016))	Thurrock (Upper Tier Local Authority)	England
All causes, aged under 65	63	1,041	373,093
All causes, aged under 75	110	2,067	752,670
All cancer, aged under 75	38	860	310,786
All circulatory disease, aged under 75	31	518	166,529
Coronary heart disease, aged under 75	15	268	91,057

Source: Public Health England, produced from ONS data Copyright © 2017

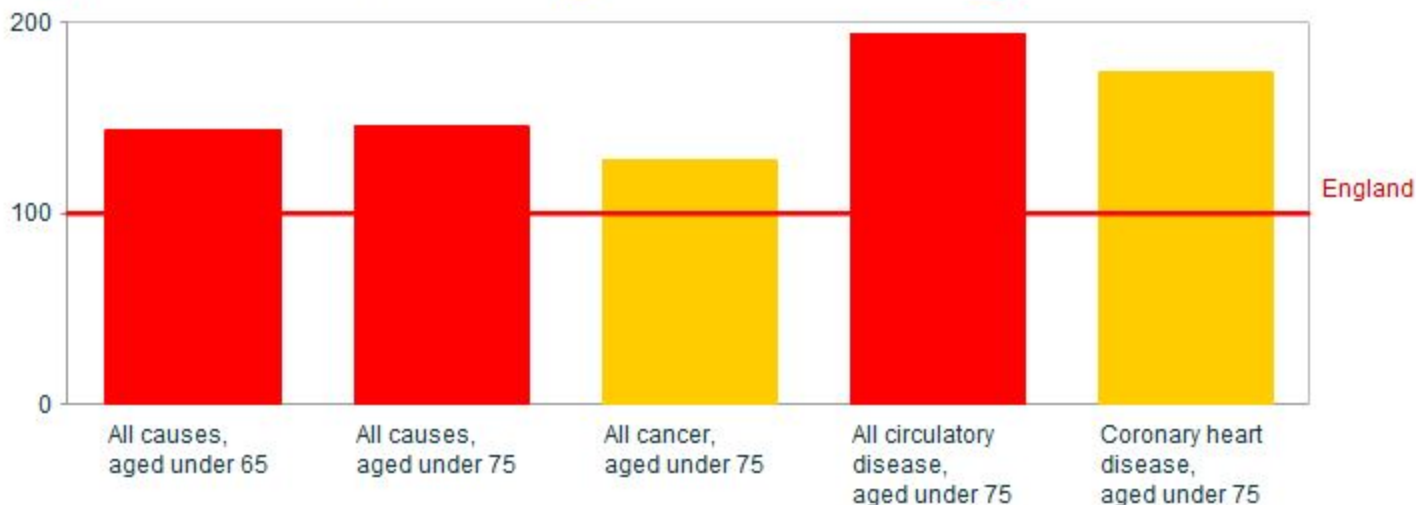
Causes of deaths - premature mortality, Standardised Mortality Ratios (SMR), 2011-2015

Indicator	Tilbury Riverside and Thurrock Park (Ward (2016))	Thurrock (Upper Tier Local Authority)	England
All causes, aged under 65	143.6	95.5	100
All causes, aged under 75	145.4	103	100
All cancer, aged under 75	127.6	105.9	100
All circulatory disease, aged under 75	194.4	119.1	100
Coronary heart disease, aged under 75	173.7	113.2	100

Source: Public Health England, produced from ONS data Copyright © 2017

Causes of deaths - premature mortality, SMR, 2011-2015, Selection (comparing to England average)

■ Significantly better than England
 ■ Not significantly different
 ■ Significantly worse than England



Source: Public Health England, produced from ONS data Copyright © 2017



Report - Ward 2016: Tilbury St Chads (Ward (2016))

Emergency hospital admissions

Emergency Hospital Admissions, numbers, 2011/12 to 2015/16 (estimated from MSOA level data)

Indicator	Tilbury St Chads (Ward (2016))	Thurrock (Upper Tier Local Authority)	England
Emergency hospital admissions for all causes	2,357	58,558	26,930,251
Emergency hospital admissions for CHD*	63	1,739	688,090
Emergency hospital admissions for stroke	41	1,080	398,062
Emergency hospital admissions for MI*	30	865	335,723
Emergency hospital admissions for COPD*	91	1,682	583,448

Source: Public Health England, NHS Digital © Copyright 2017

*CHD: Coronary Heart Disease; MI: Myocardial Infarction (heart attack); COPD: Chronic Obstructive Pulmonary Disease

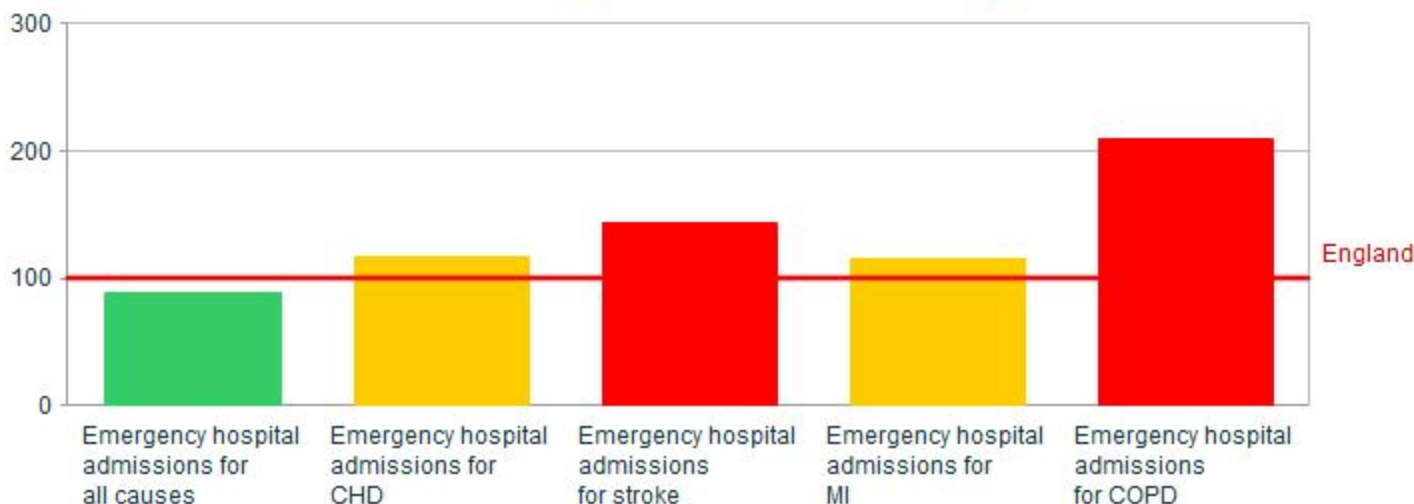
Emergency Hospital Admissions, Standardised Admission Ratios (SAR), 2011/12 to 2015/16 (estimated from MSOA data)

Indicator	Tilbury St Chads (Ward (2016))	Thurrock (Upper Tier Local Authority)	England
Emergency hospital admissions for all causes	88.7	78.4	100
Emergency hospital admissions for CHD	116.6	100.9	100
Emergency hospital admissions for stroke	143.3	113.4	100
Emergency hospital admissions for MI	115.6	103.3	100
Emergency hospital admissions for COPD	209	118.6	100

Source: Public Health England, NHS Digital © Copyright 2017

Emergency Hospital admissions, SAR, 2011/12 to 2015/16, Selection (comparing to England average)

■ Significantly better than England
 ■ Not significantly different
 ■ Significantly worse than England



Source: Public Health England, NHS Digital © Copyright 2017



Report - Ward 2016: Tilbury St Chads (Ward (2016))

Mortality and causes of death - all ages

Causes of deaths - all ages, numbers, 2011-2015

Indicator	Tilbury St Chads (Ward (2016))	Thurrock (Upper Tier Local Authority)	England
All causes	206	5,828	2,357,381
All cancer	60	1,769	666,658
All circulatory disease	68	1,603	646,138
Coronary heart disease	41	771	289,738
Stroke	8	383	165,375
Respiratory diseases	33	873	325,764

Source: Public Health England, produced from ONS data Copyright © 2017

Causes of deaths - all ages, Standardised Mortality Ratios (SMR), 2011-2015

Indicator	Tilbury St Chads (Ward (2016))	Thurrock (Upper Tier Local Authority)	England
All causes	136.9	105.9	100
All cancer	126.2	110.7	100
All circulatory disease	174.6	108.4	100
Coronary heart disease	223.2	114.9	100
Stroke	86.6	103	100
Respiratory diseases	174.7	118.8	100

Source: Public Health England, produced from ONS data Copyright © 2017

Causes of deaths - all ages, SMR, 2011-2015, Selection (comparing to England average)

■ Significantly better than England
 ■ Not significantly different
 ■ Significantly worse than England



Source: Public Health England, produced from ONS data Copyright © 2017



Report - Ward 2016: Tilbury St Chads (Ward (2016))

Mortality and causes of death - premature mortality

Causes of deaths - premature mortality, numbers, 2011-2015

Indicator	Tilbury St Chads (Ward (2016))	Thurrock (Upper Tier Local Authority)	England
All causes, aged under 65	64	1,041	373,093
All causes, aged under 75	105	2,067	752,670
All cancer, aged under 75	33	860	310,786
All circulatory disease, aged under 75	36	518	166,529
Coronary heart disease, aged under 75	23	268	91,057

Source: Public Health England, produced from ONS data Copyright © 2017

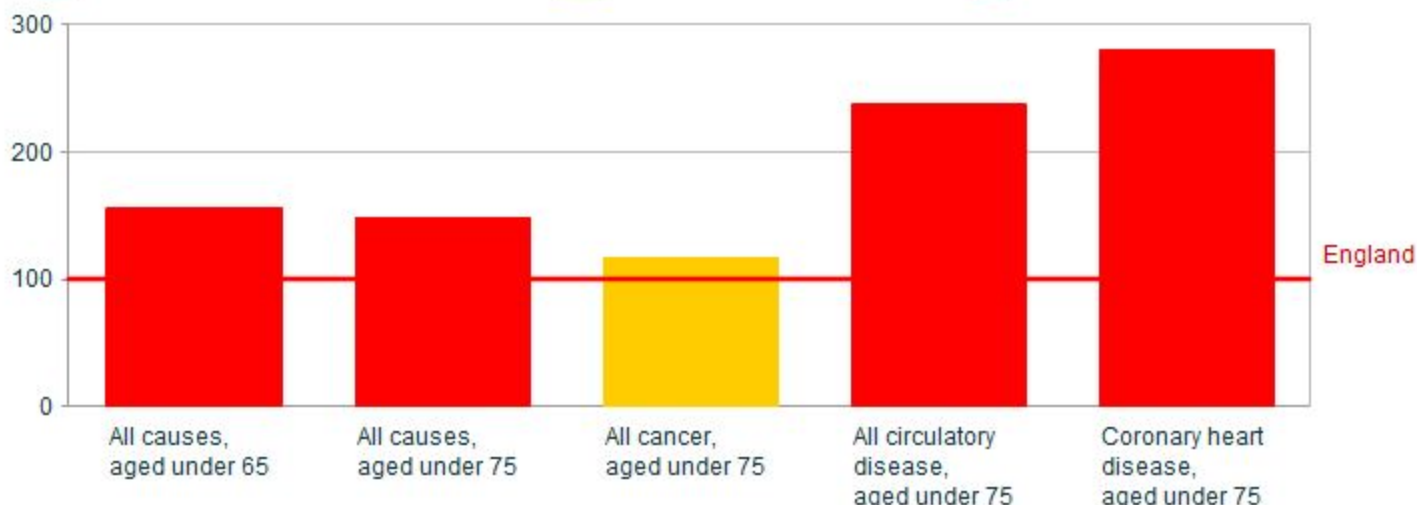
Causes of deaths - premature mortality, Standardised Mortality Ratios (SMR), 2011-2015

Indicator	Tilbury St Chads (Ward (2016))	Thurrock (Upper Tier Local Authority)	England
All causes, aged under 65	155.7	95.5	100
All causes, aged under 75	148.7	103	100
All cancer, aged under 75	117.2	105.9	100
All circulatory disease, aged under 75	237.4	119.1	100
Coronary heart disease, aged under 75	279.6	113.2	100

Source: Public Health England, produced from ONS data Copyright © 2017

Causes of deaths - premature mortality, SMR, 2011-2015, Selection (comparing to England average)

■ Significantly better than England
 ■ Not significantly different
 ■ Significantly worse than England



Source: Public Health England, produced from ONS data Copyright © 2017