

PLANNING ACT 2008  
INFRASTRUCTURE PLANNING  
(APPLICATIONS: PRESCRIBED FORMS AND PROCEDURE) REGULATIONS 2009  
REGULATION 5 (2) (a)

## PROPOSED PORT TERMINAL AT FORMER TILBURY POWER STATION

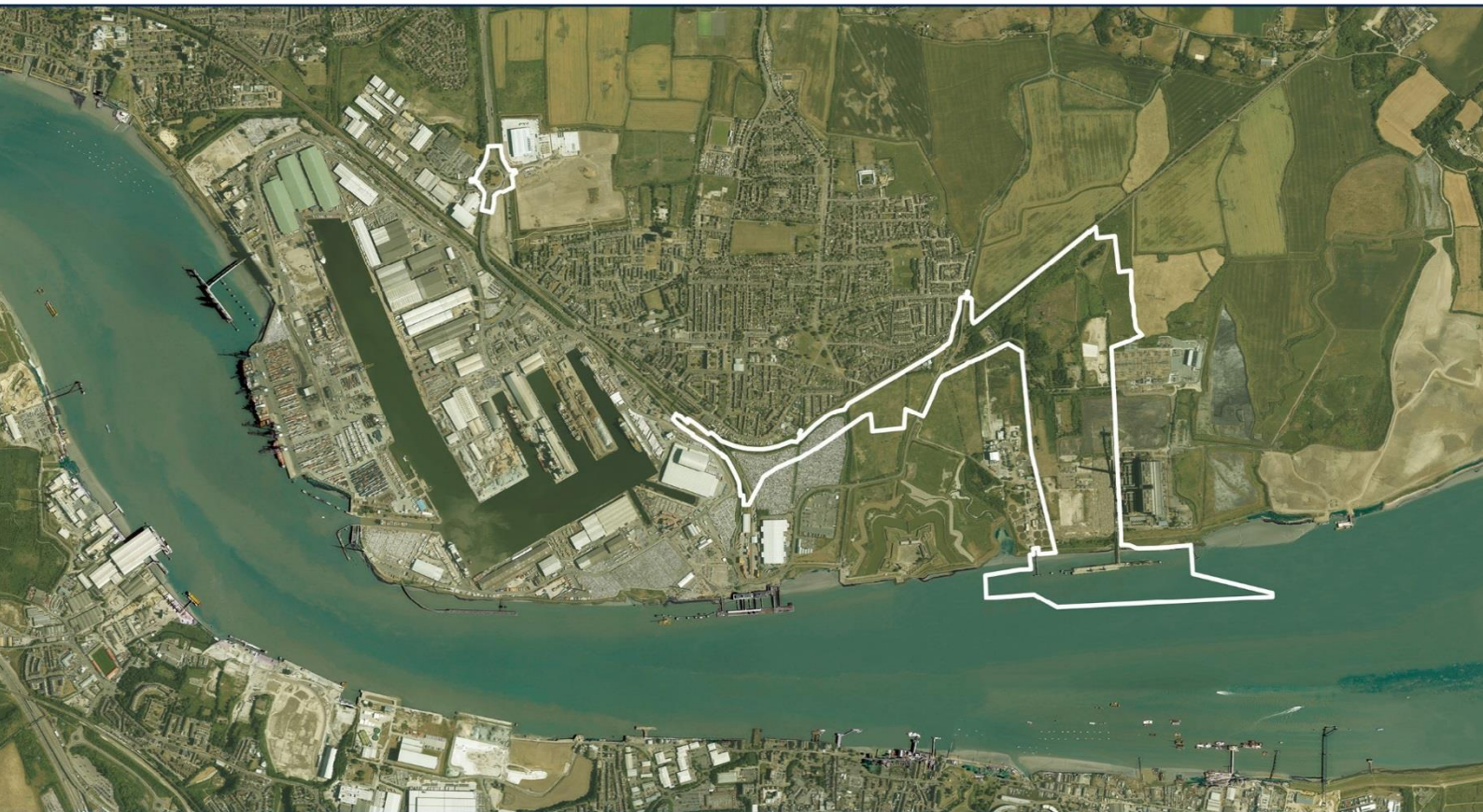
# TILBURY2

TR030003

VOLUME 6 PART B

### ES APPENDIX 17.B: CONSTRUCTION NOISE ASSESSMENT

DOCUMENT REF: 6.2 17.B



**APPENDIX 17.B – CONSTRUCTION NOISE ASSESSMENT –  
INDICTIVE PLANT LIST**

Phase	Activity	Plant Type	BS5228 / CNP Ref	Plant noise level dB L <sub>Aeq</sub> at 10m	Total no. in use	% on time
<b>Site preparation</b>	Topsoil strip	Tracked excavator (25t)	C.2.19	77	2	80
		Dozer	C.2.11	79	1	80
		Articulated dump truck (dumping fill)	C.2.32	74	2	25
	Haul Road Construction	Delivery lorry	Av C.6.21 & 23	81	1	25
		Vibratory roller	C.2.39	74	1	50
		Dozer (28t)	C.2.11	79	1	50
		Tracked excavator (25t)	C.2.19	77	1	50
<b>Bridge construction</b>	Substructure (Rotary bored Piles)	CFA piling - Crawler mounted rig	C3.22	80	1	80
		Tracked excavator (inserting cage)	C3.24	74	1	30
		Concrete pump	C3.25	78	1	50
		Lorry with lifting boom	C.4.53	77	1	25
		Delivery lorry	Av C.6.21 & 23	81	1	10
	Casting pile caps & abutment walls	Pumping concrete - mixer truck + pump	C.4.28	75	1	80
		Poker vibrator	C.4.34	69	3	50
		Compressor	D.6.19	72	1	50
	Wing walls	Tracked excavator (40t), compaction & lifting	C.2.14	79	1	80
		Vibratory plate (petrol)	C.2.41	80	1	50
	Lifting precast beams	Wheeled mobile crane (400t)	C.4.38	78	1	50
		Telescopic handler	C.4.54	79	1	25
		Diesel scissor lift	C.4.59	78	2	25
		Diesel generator for lighting	C.4.86	65	1	100
	Bridge deck - concreting	Pumping concrete - mixer truck + pump	C.4.28	75	1	80
		Poker vibrator	C.4.34	69	3	50
		Compressor	D.6.19	72	1	50
<b>Road construction</b>	Sub-layers	Articulated dump truck (dumping fill)	C.2.32	74	1	80
		Tracked excavator (25t)	C.2.19	77	2	80
		Dozer	C.2.11	79	1	80
		Grader	D.3.74	77	1	80
		Vibratory roller	C.5.20	75	1	80
	Surfacing	Asphalt paver (+ tipper lorry)	C.5.33	75	1	80

Phase	Activity	Plant Type	BS5228 / CNP Ref	Plant noise level dB L <sub>Aeq</sub> at 10m	Total no. in use	% on time
		Vibratory roller	C.5.20	75	1	80
<b>Rail construction</b>	Track laying	Tracked excavator (25t)	C.2.19	77	2	80
		Articulated dump truck (dumping fill)	C.2.32	74	2	80
		Vibratory roller	C.2.39	74	1	50
		Wheeled mobile crane	C.4.43	70	1	80
		Hand-held welder	C.3.31	73	1	50
		Generator (power for welding, lighting etc)	C.4.85	66	1	50
<b>Jetty construction</b>	Piling & dredging works	Tubular steel piling-Hydraulic Hammer	C.3.3	88	1	80
		Crane, mobile/barge mounted (diesel)	CNP 048	84	1	80
		Long reach tracked excavator	C.7.1	78	1	50
		Grab hopper dredging ship	C.7.2	82	1	80
<b>Building construction</b>	Substructure works	Tracked excavator (25t)	C.2.19	77	1	80
		Pumping concrete - mixer truck + pump	C.4.28	75	1	80
		Poker vibrator	C.4.34	69	2	25
		Compressor	D.6.19	72	1	25
	Superstructure works	Delivery wagons - arrive/depart	C11.7	79	1	20
		Mobile telescopic crane	C4.43	70	1	50
		Lifting platform	C4.57	67	2	20
		Telescopic handler	C4.54	79	1	20
<b>Pavement construction</b>	Concrete hardstanding	Articulated dump truck (dumping fill)	C.2.32	74	1	80
		Tracked excavator (25t)	C.2.19	77	1	80
		Dozer	C.2.11	79	1	80
		Grader	D.3.74	77	1	80
		Vibratory roller	C.5.20	75	1	80
		Pumping concrete - mixer truck + pump	C.4.28	75	1	80
		Vibratory tamper	C.4.35	63	1	50