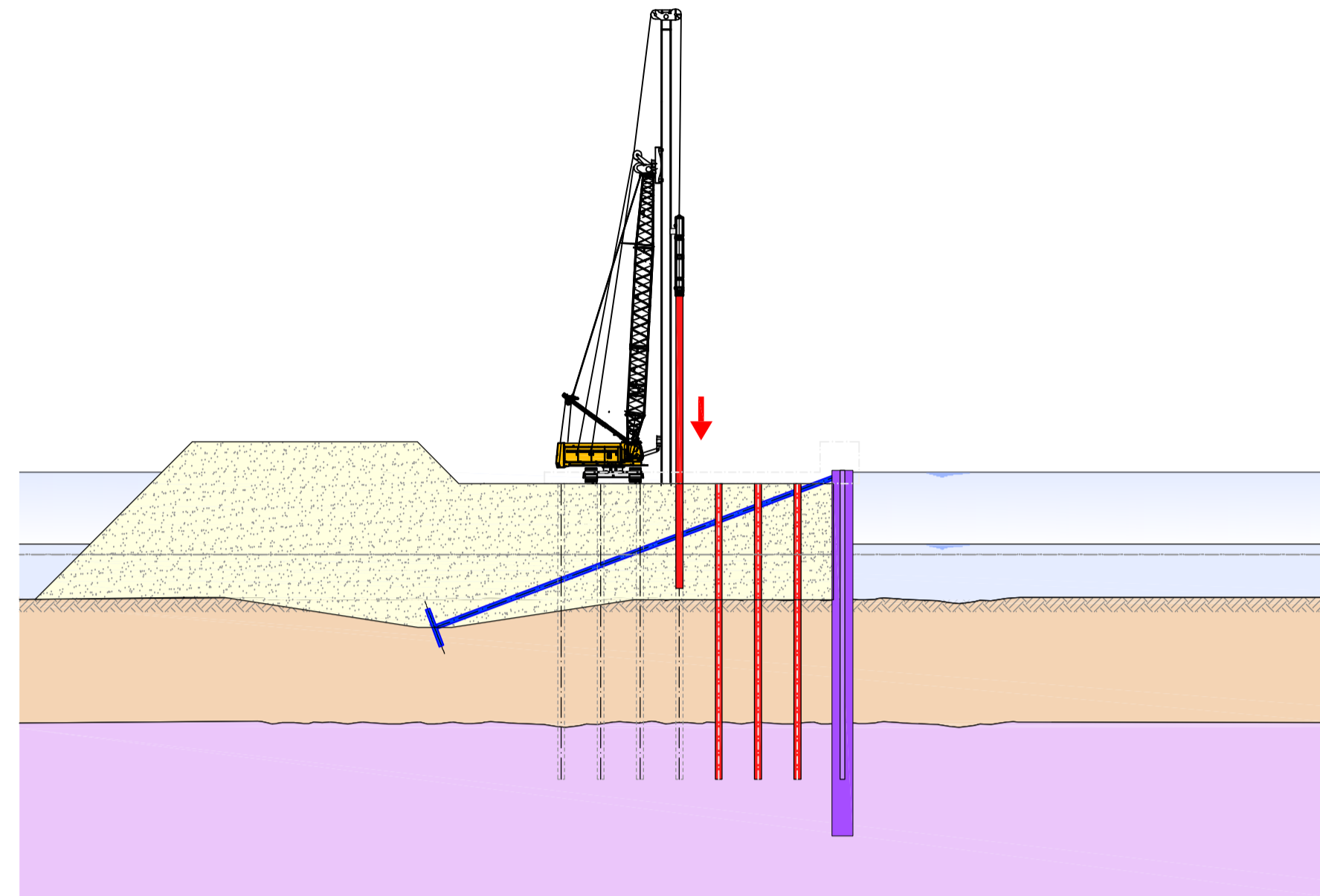


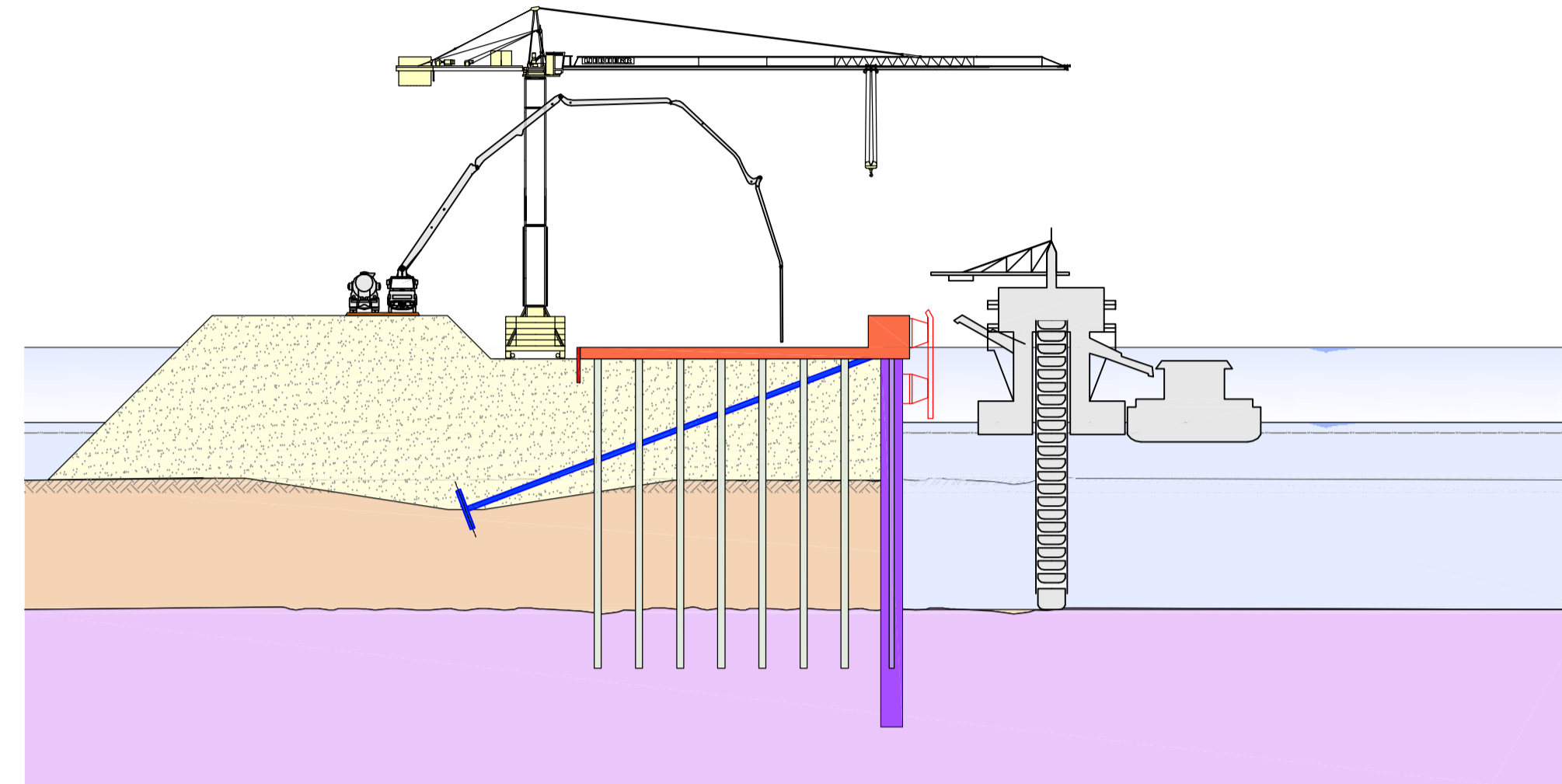
STAGE 6

- Driving of cast in situ concrete piles



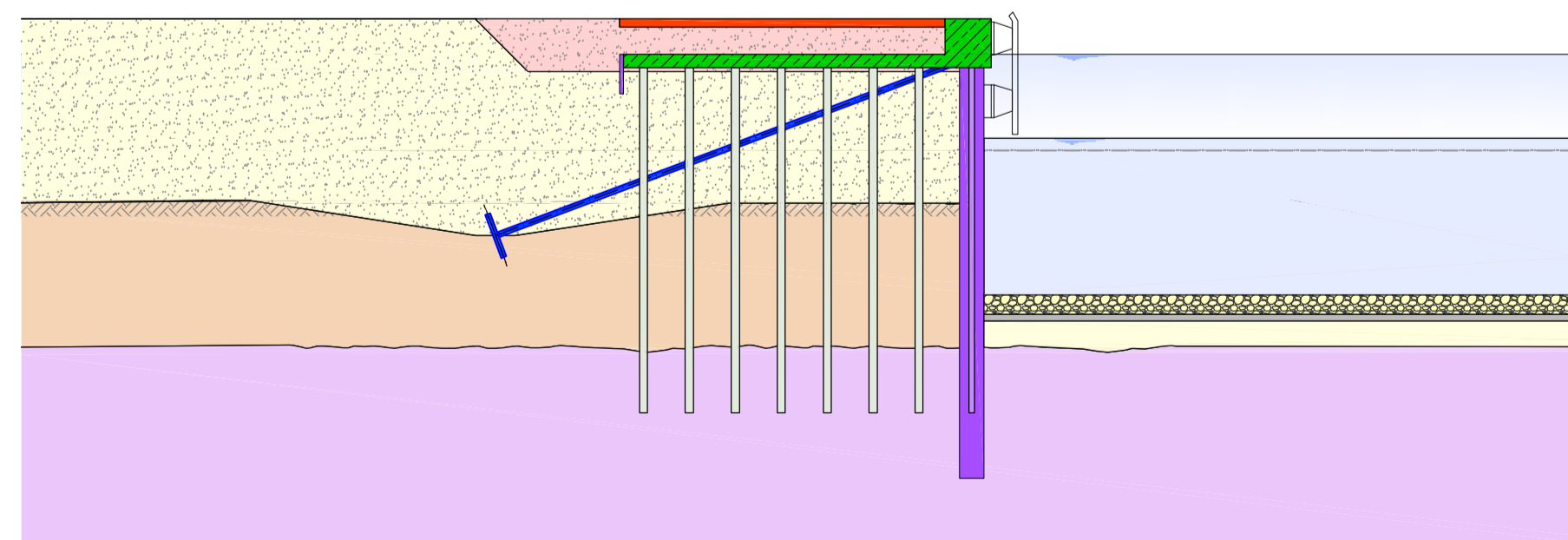
STAGE 7

- Casting of capping beam + concrete slab
- Installation of equipment
- Dredging of berthing pocket to top of chalk



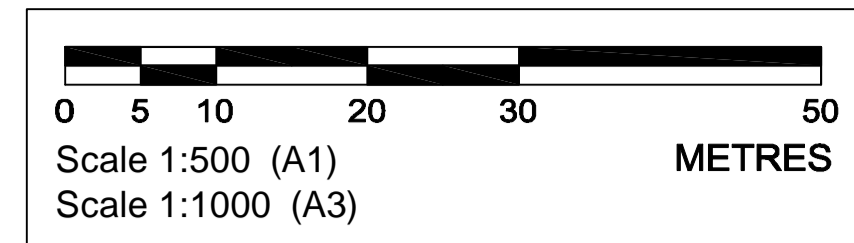
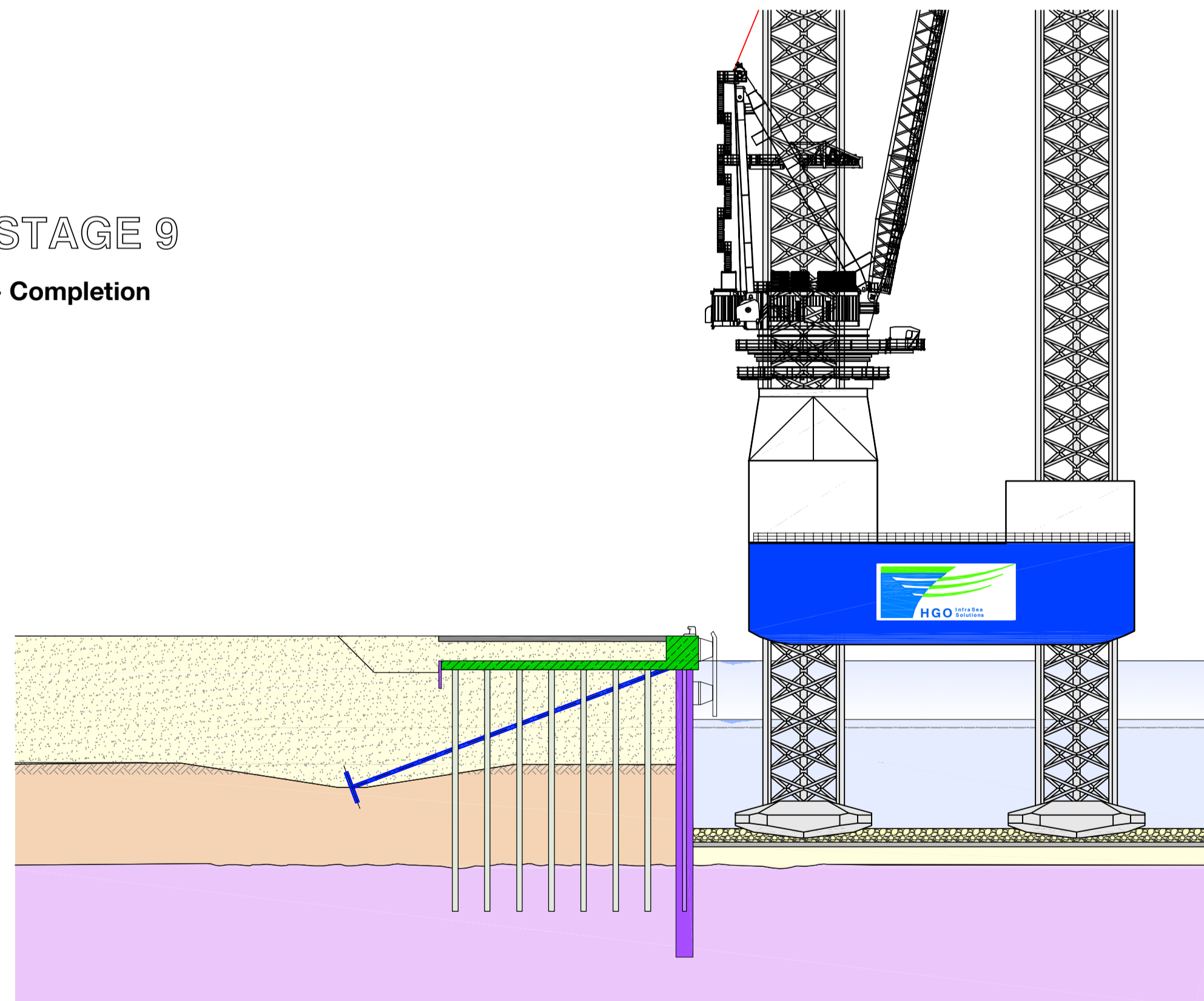
STAGE 8

- Refilling of berthing pocket with granular / rock fill
- Pavement works



STAGE 9

- Completion



KEY

- Levels to Chart Datum
- Details based on preliminary design
- Levels given for the Approach Channel and the Harbour Bed are the maximum maintained levels

Rev	Date	Description	By	Chk	App
E	28.11.11	Adjustment of scales	AGR	SVF	HTA
D	19.09.11	Revision IPC Application	AGR	SVF	HTA
C	31.08.11	Revision IPC Application	AGR	SVF	HTA
B	30.08.11	Revision IPC Application	AGR	SVF	HTA
A	07.01.11	EIA Masterplan Revision	RBS	SVF	HTA
0	17.09.10	Preliminary Issue	JSE	SVF	HTA


 Able UK Ltd
 Able House
 Billingham
 Teesside UK
www.ableuk.com
 TS23 1PX
 Tel: +44-(0)1642 806080
 Fax: +44-(0)1642 655655
 email: info@ableuk.com
www.ableuk.com

Project:	ABLE Marine Energy Park
Client:	ABLE UK Ltd
Title:	Indicative Sequence Cross Section 2/2

PRELIMINARY


 Civil Engineering and Marine Works
 Lübeckertordamm 1
 20099 Hamburg / Germany
 Tel. 0049- 40 / 21 986 - 0
 Fax. 0049- 40 / 21 986 - 200

Scale:	1 : 500 @A1	Drawn By:	JSE	Checked By:	SVF	Approved By:	HTA
Date:	17.09.2010	Date:	17.09.2010	Date:	17.09.2010		
Drawing No.	AMEP_P1D_D_105		Revision:	E			