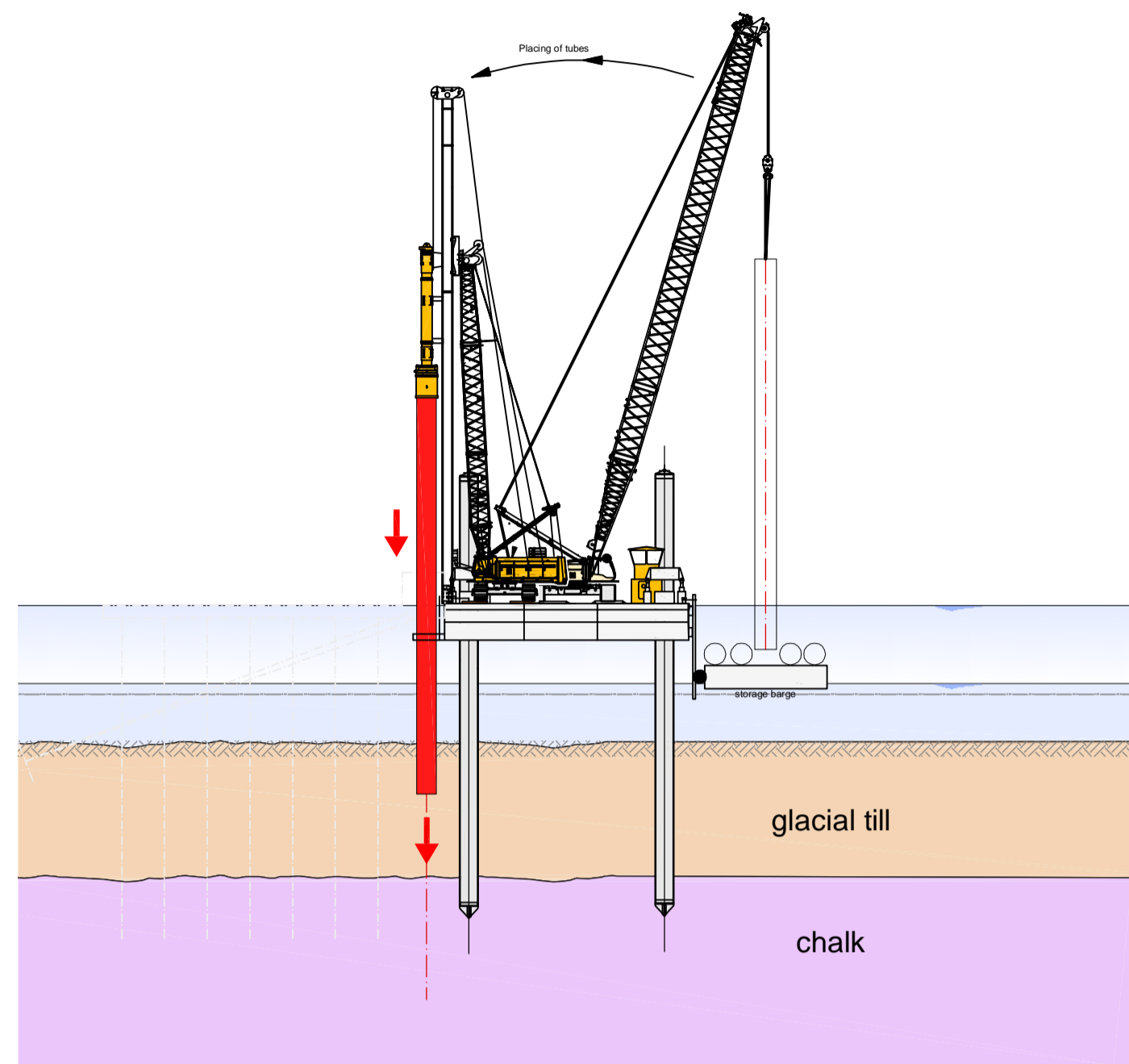


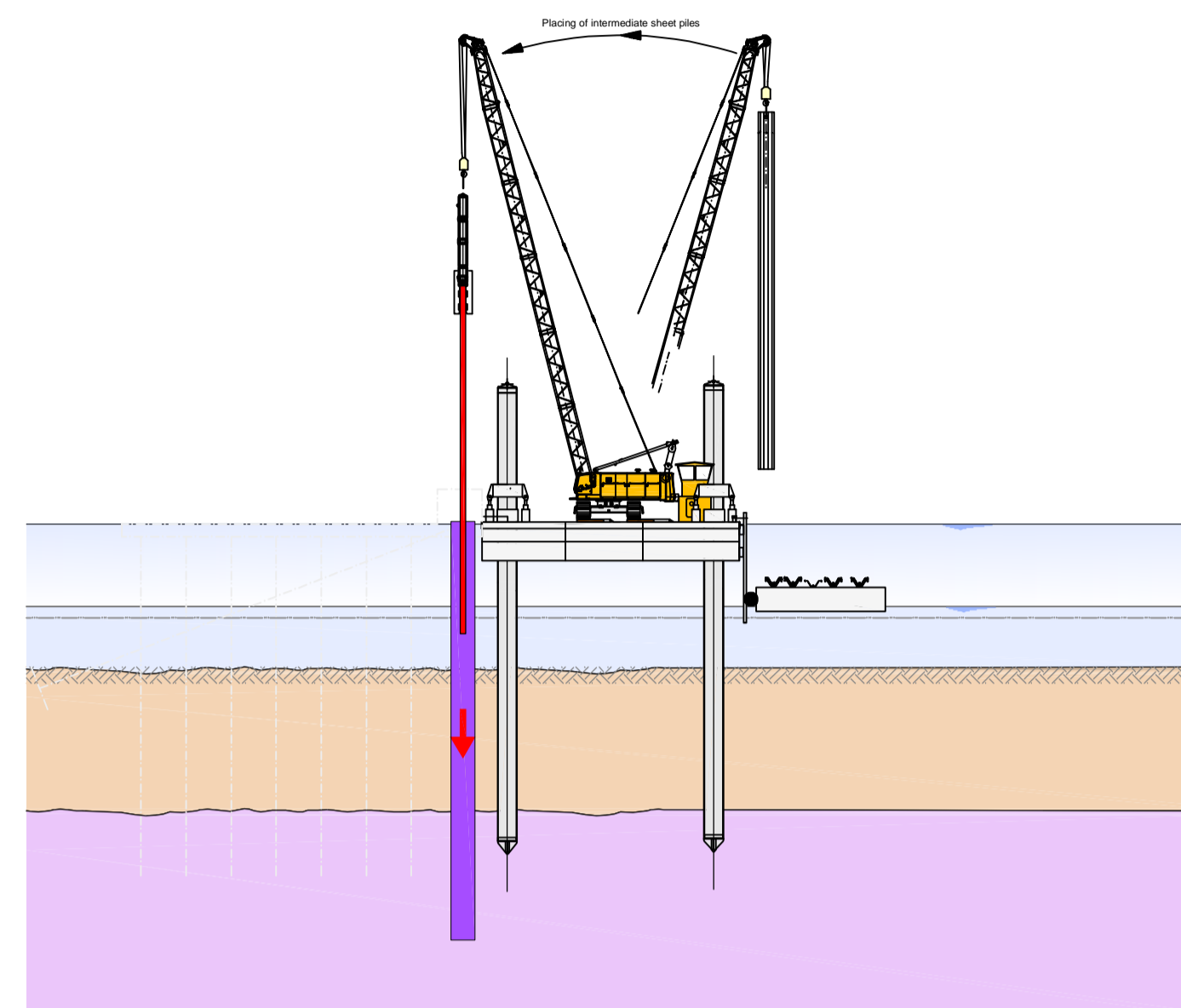
STAGE 1

- Driving of tubes



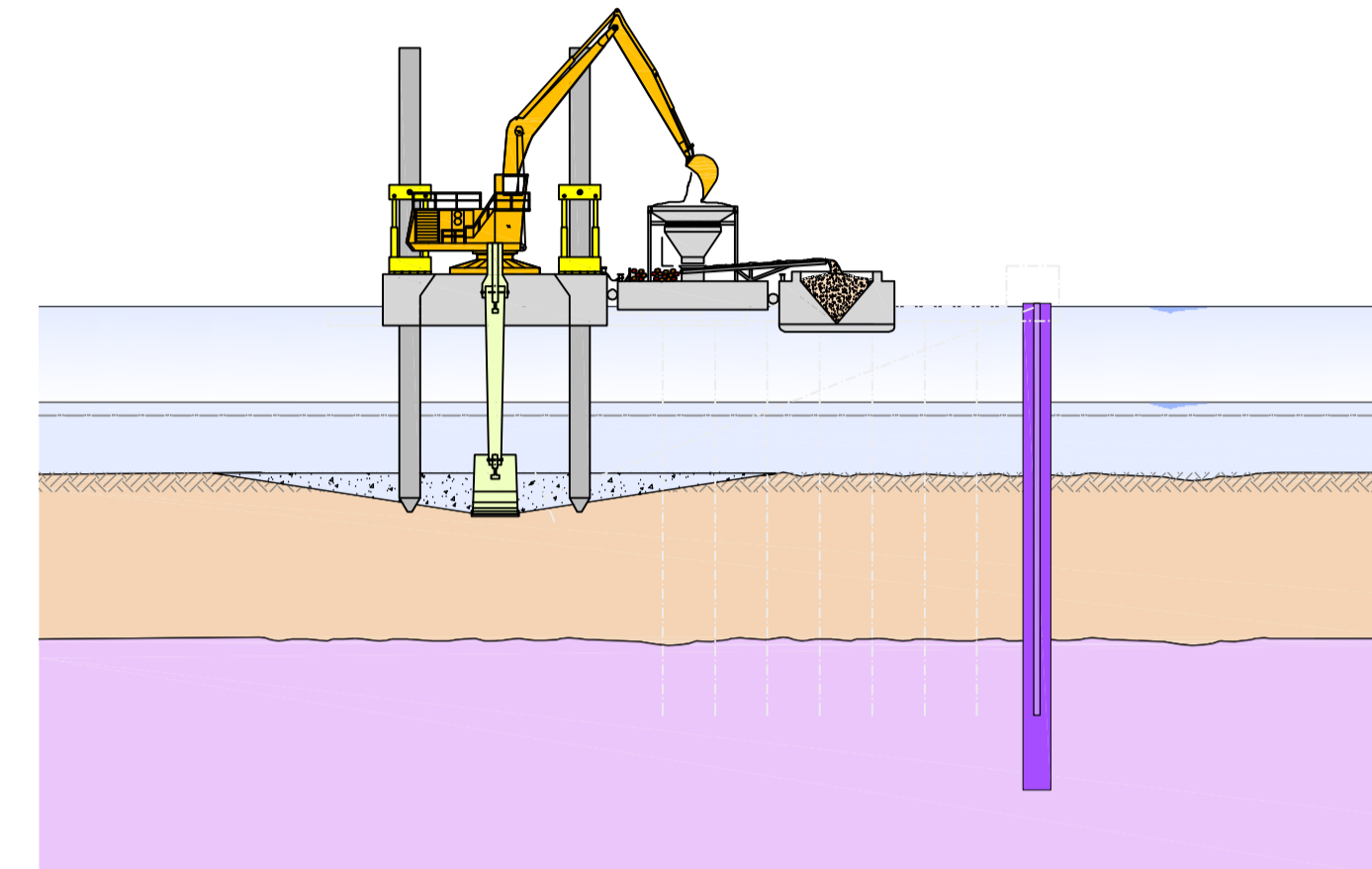
STAGE 2

- Driving of intermediate sheet piles



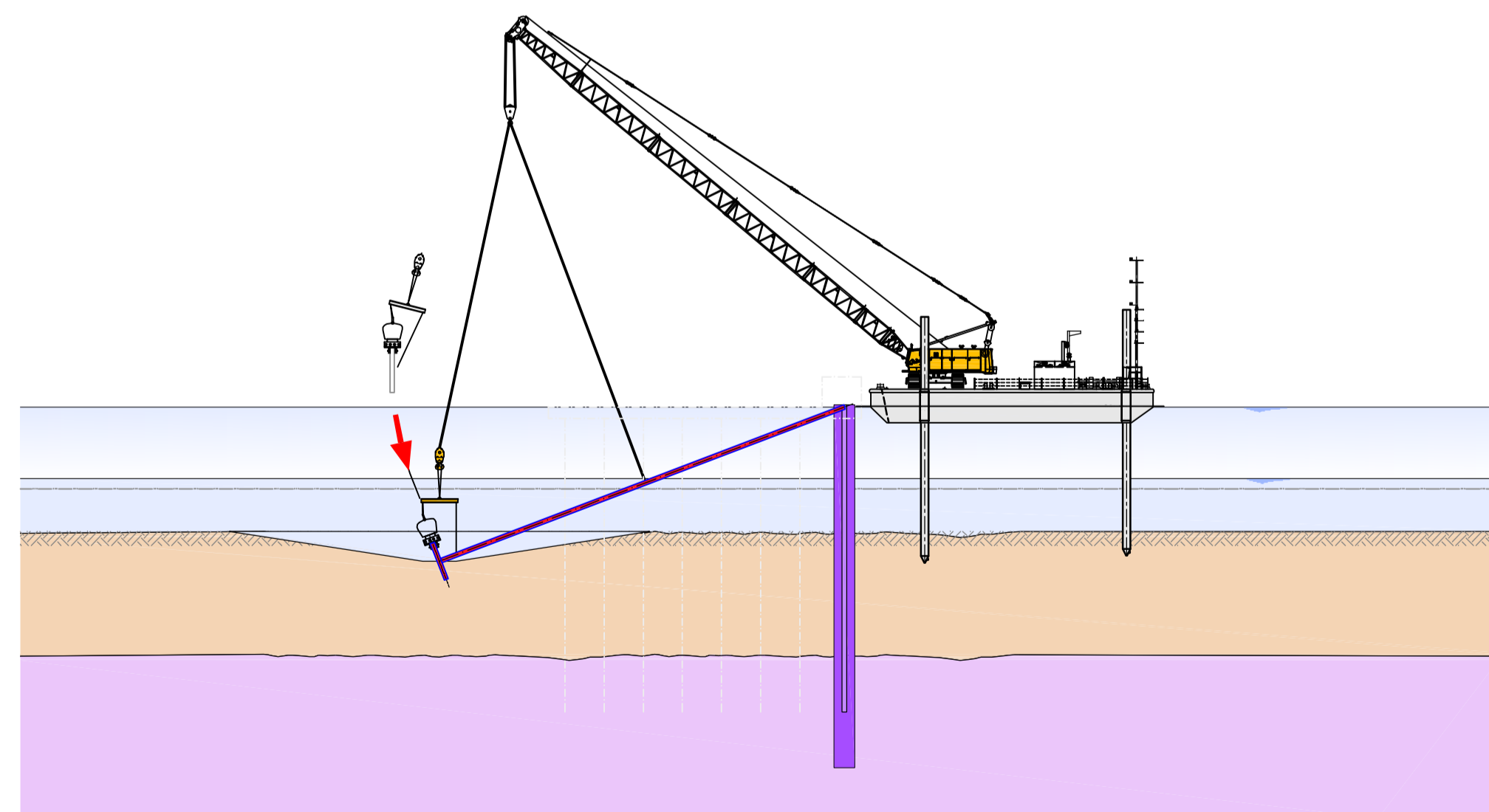
STAGE 3

- Dredging of flap anchor trench



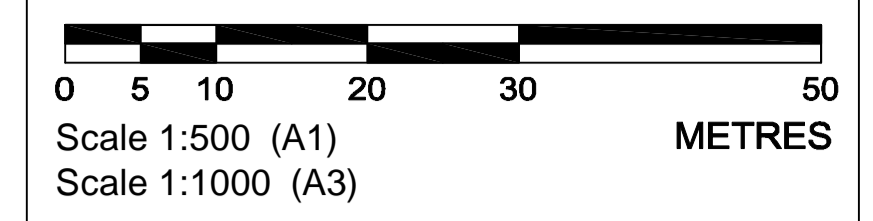
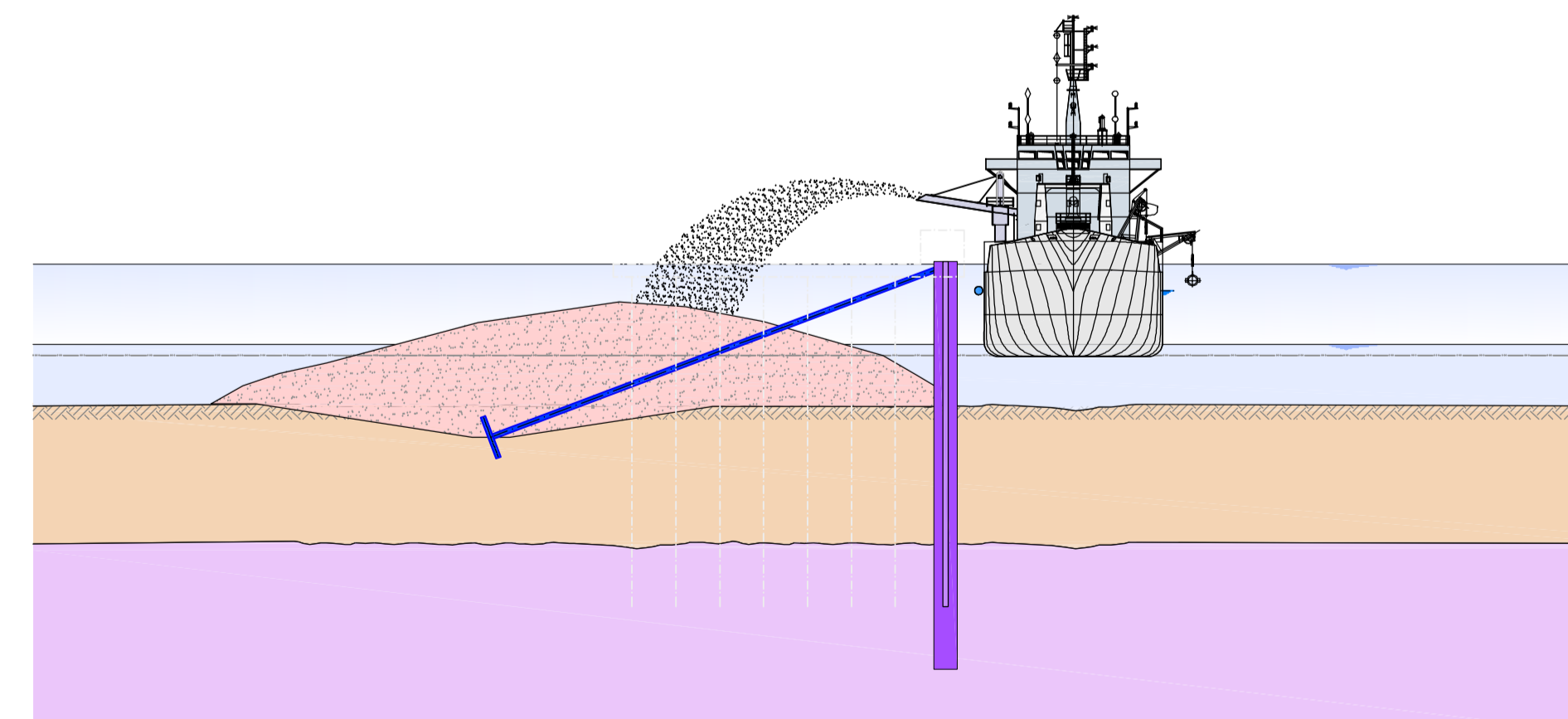
STAGE 4

- Installation of flap anchors



STAGE 5

- Backfilling



KEY

- Levels to Chart Datum
- Details based on preliminary design
- Levels given for the Approach Channel and the Harbour Bed are the maximum maintained levels

Rev	Date	Description	By	Chk	App
C	28.11.11	Adjustment of scales	AGR	SVF	HTA
B	19.09.11	Revision IPC Application	AGR	SVF	HTA
A	30.08.11	Revision IPC Application	AGR	SVF	HTA
0	17.09.10	Preliminary Issue	JSE	SVF	HTA



Able UK Ltd
Able House
Billingham
Teesside UK
TS23 1PX
Tel: +44-(0)1642 806080
Fax: +44-(0)1642 655655
email: info@ableuk.com
www.ableuk.com

Project:	ABLE Marine Energy Park
Client:	ABLE UK Ltd
Title:	Indicative Sequence Cross Section 1/2

PRELIMINARY



Civil Engineering and Marine Works
Lübeckertordamm 1
20099 Hamburg / Germany
Tel. 0049- 40 / 21 986 - 0
Fax. 0049- 40 / 21 986 - 200

Scale:	1 : 500 @A1	Drawn By:	JSE	Checked By:	SVF	Approved By:	HTA
Date:	17.09.2010	17.09.2010	17.09.2010				
Drawing No.	AMEP_P1D_D_104		Revision:	C			