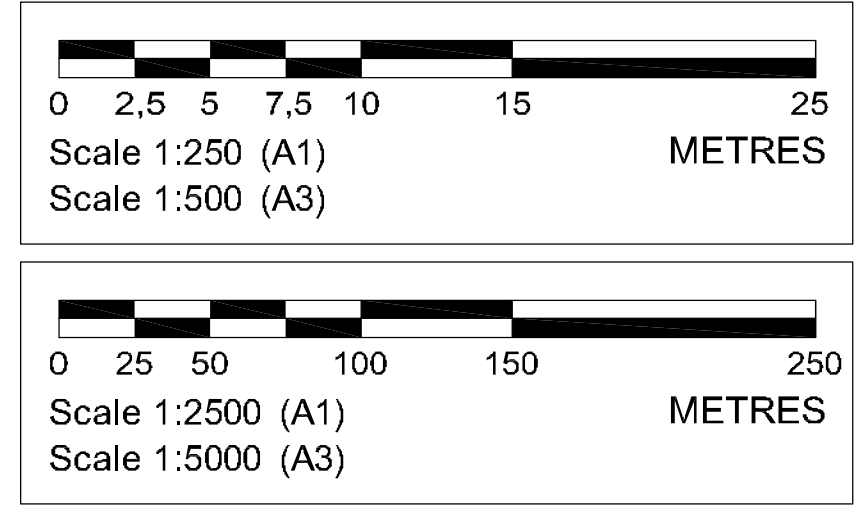
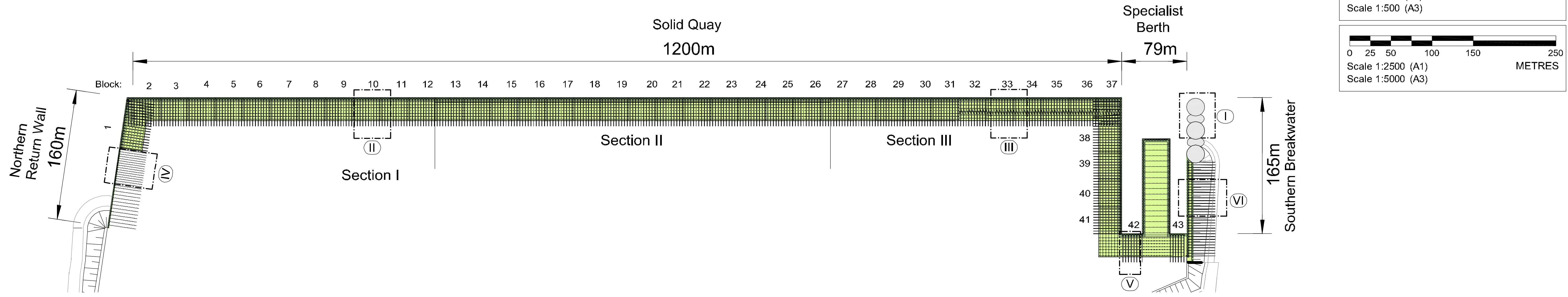
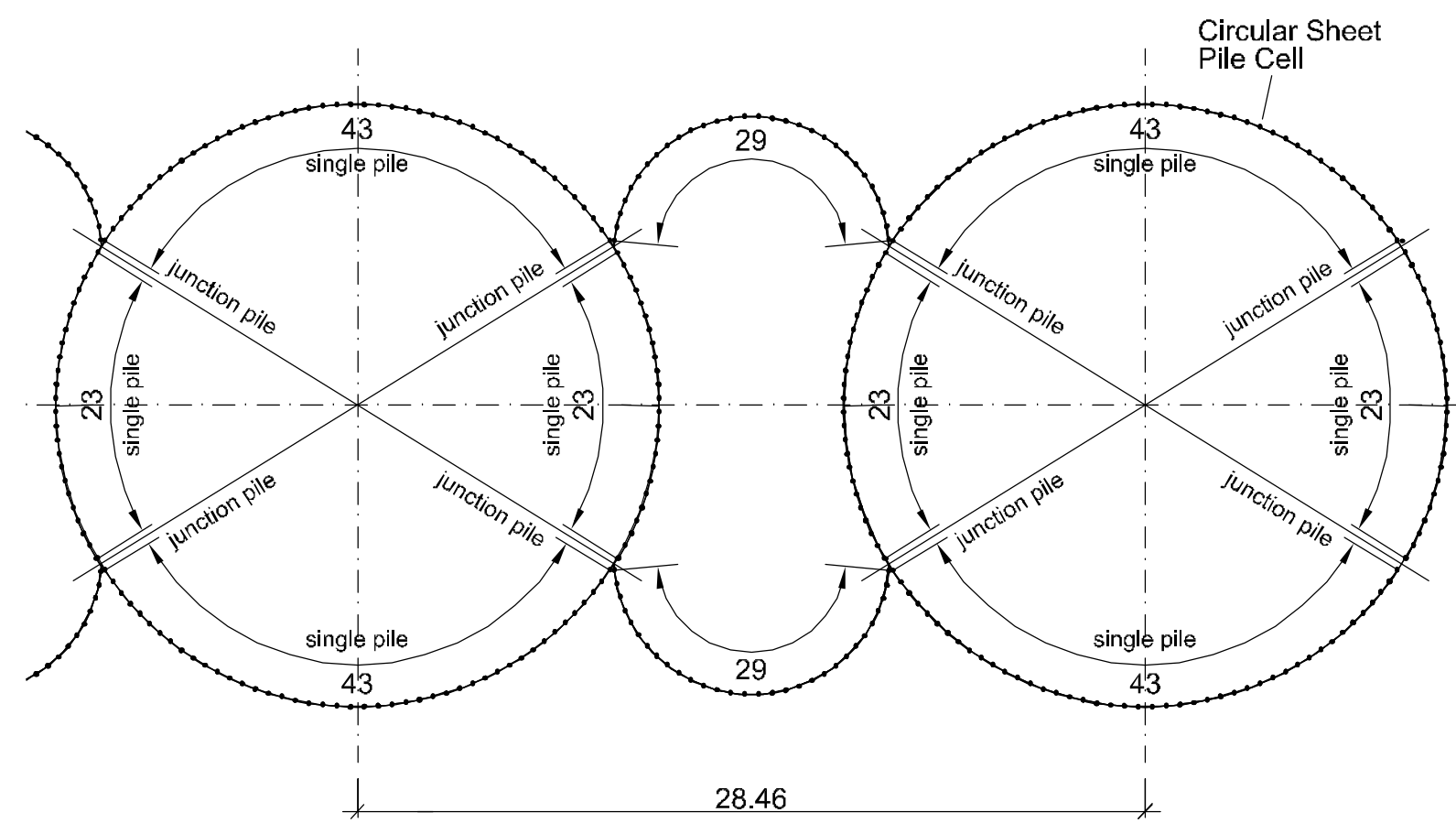


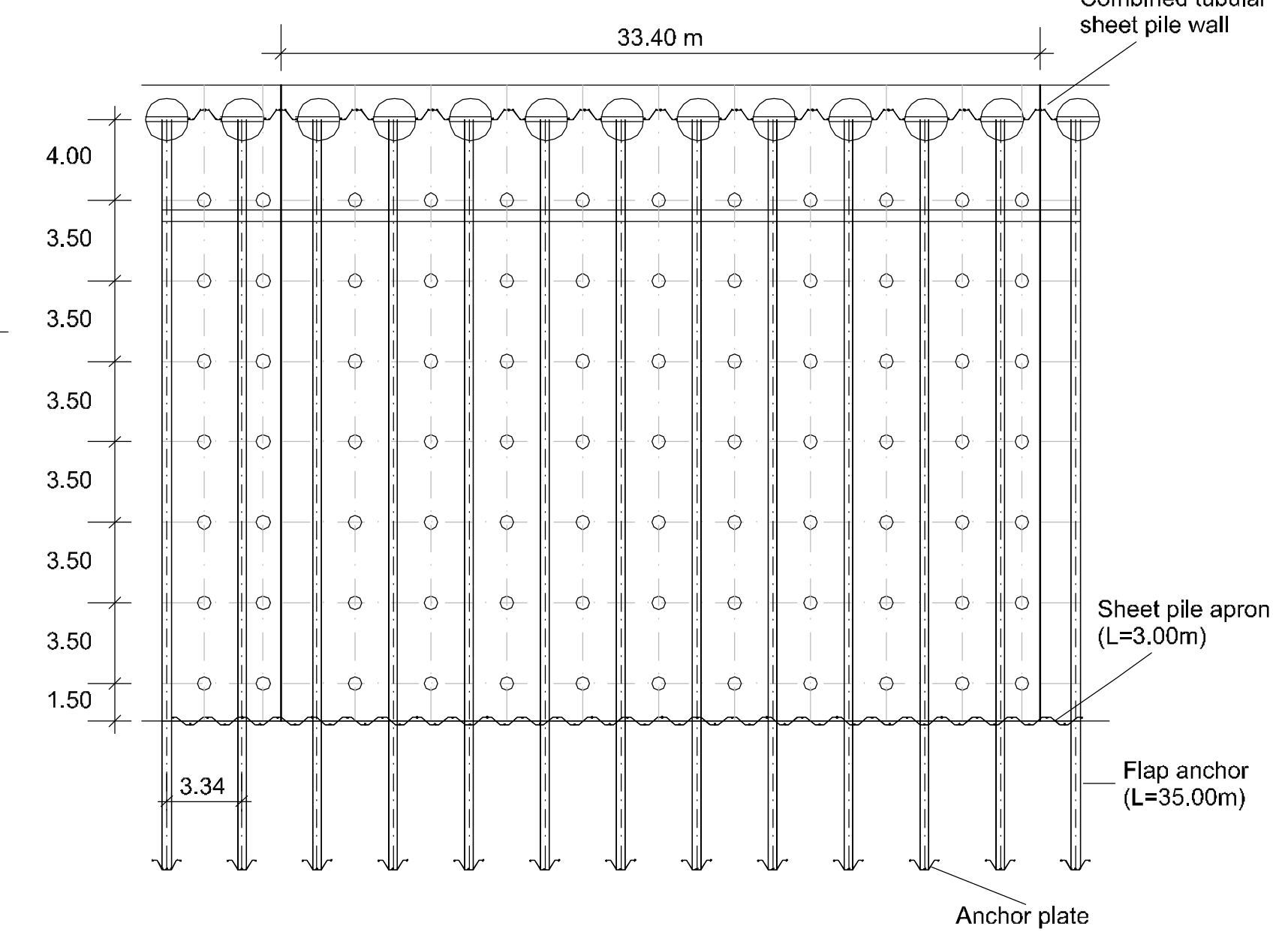
Overview 1:2500



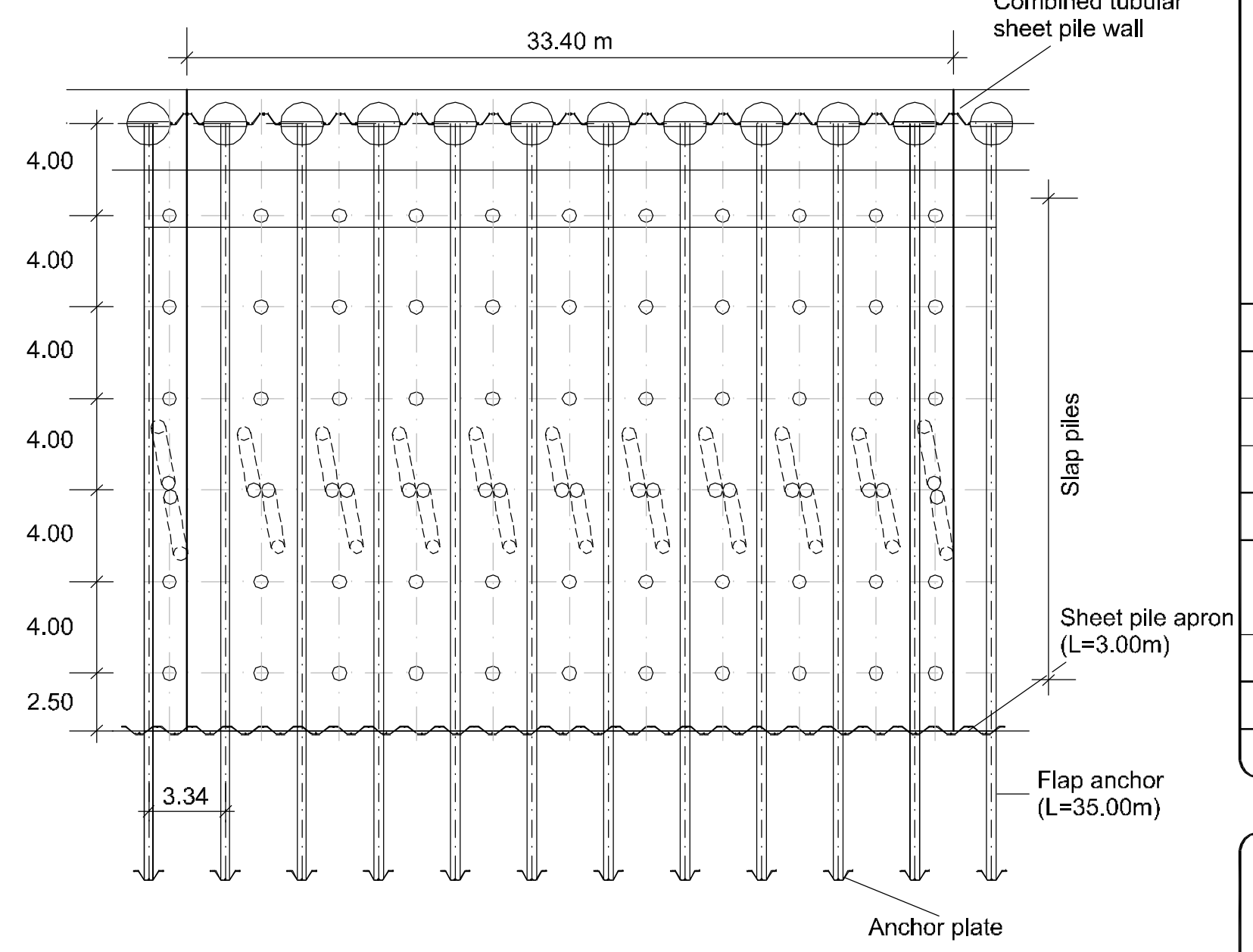
I Southern Breakwater 1:250



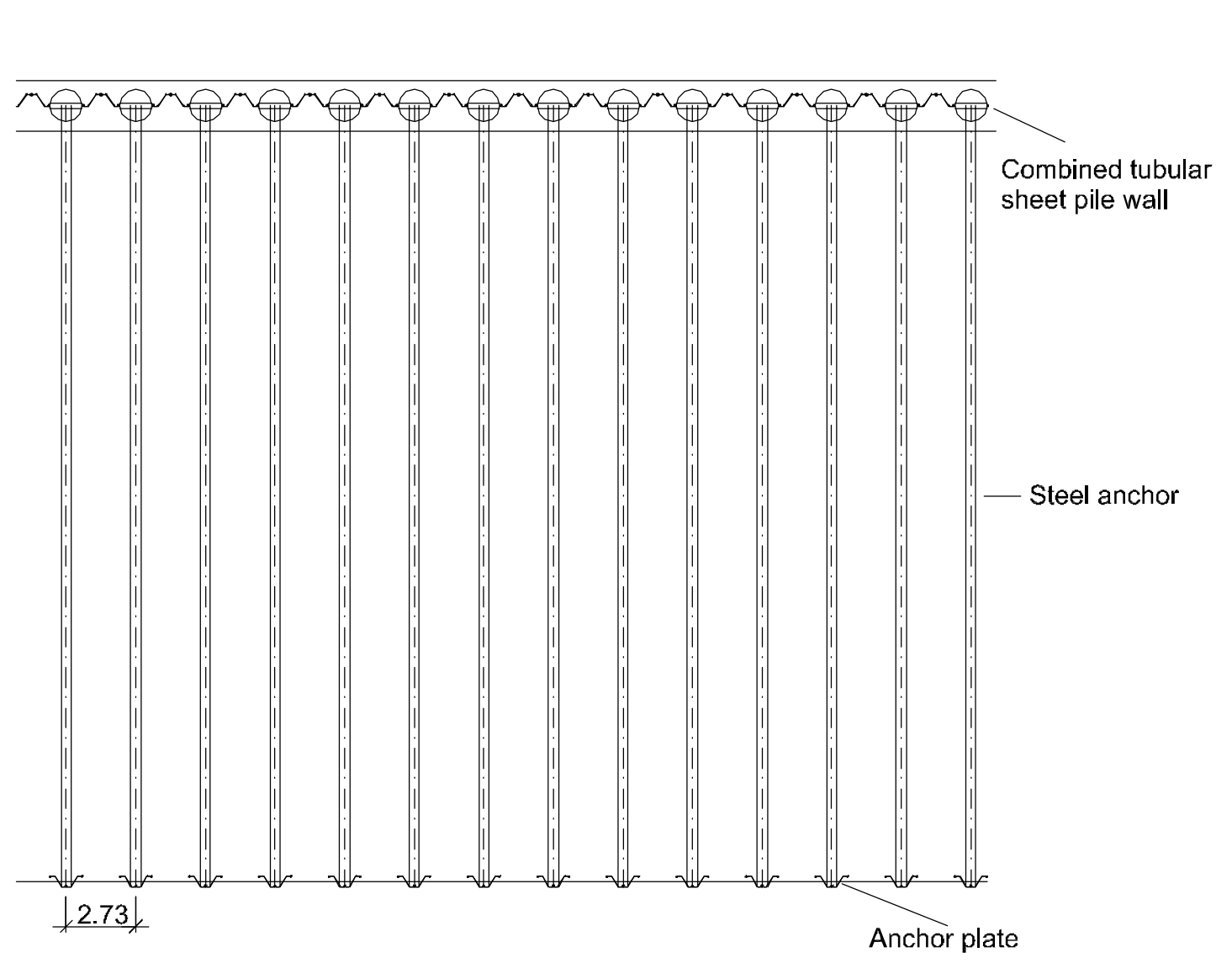
II Solid Quay Block 10 1:250



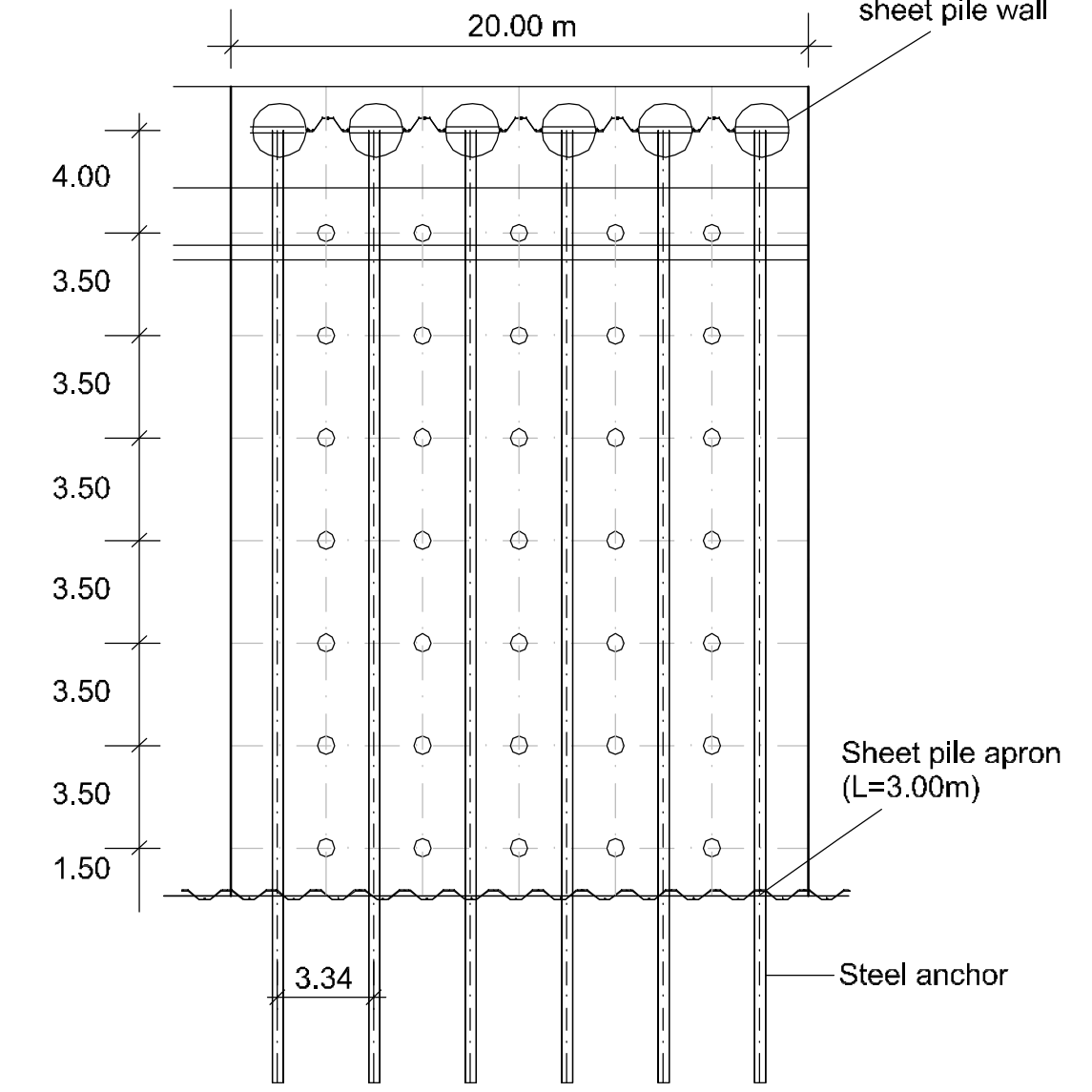
III Solid Quay Block 33 1:250



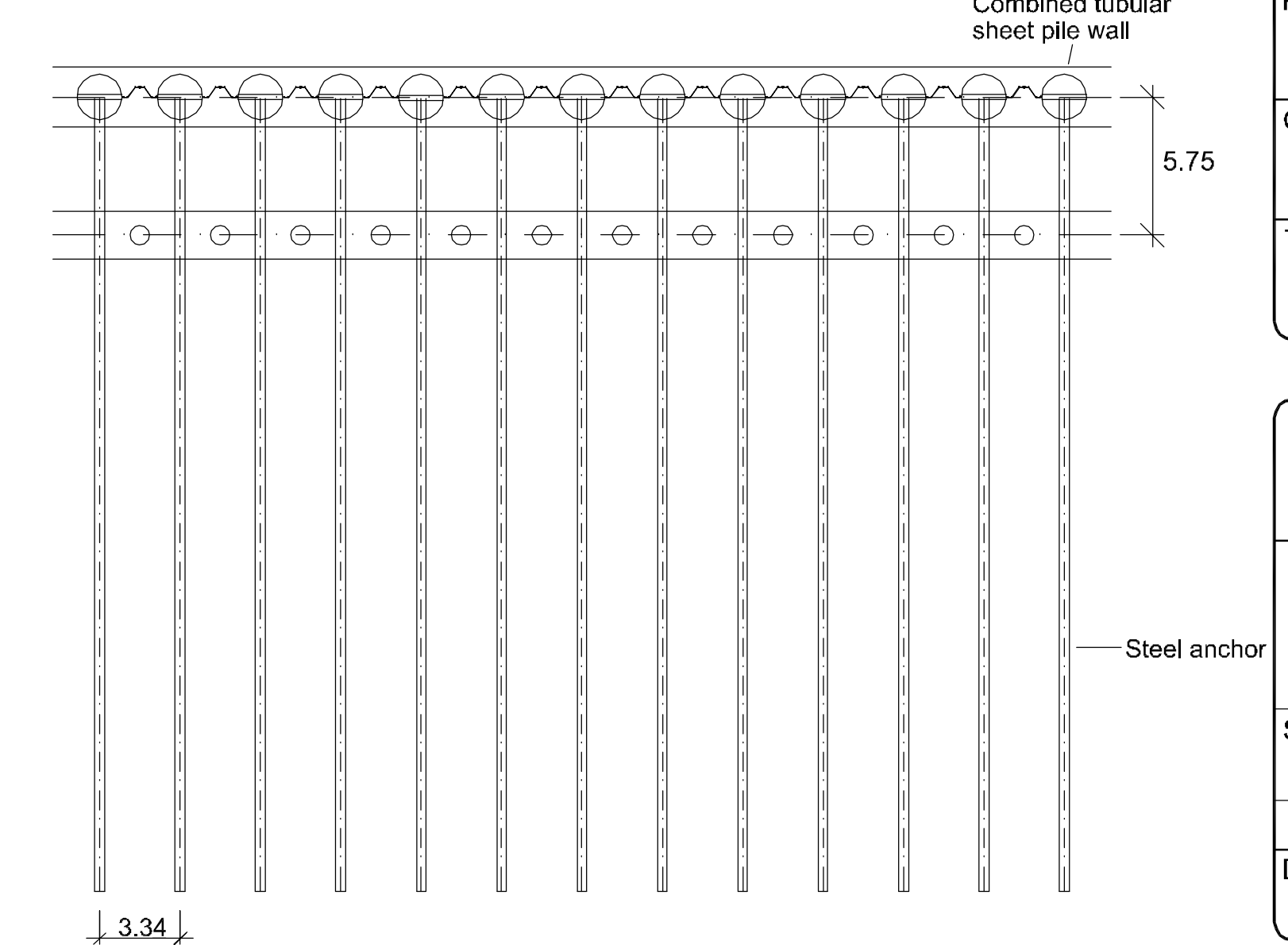
IV Northern Return Wall 1:250



V Solid Quay Block 42 1:250



VI Southern Breakwater 1:250




KEY					
-Levels to Chart Datum					
-Details based on preliminary design					
-Levels given for the Approach Channel and the Harbour Bed are the maximum maintained levels					

Rev	Date	Description	By	Chk	App
G	02.11.11	Revision IPC Application	BKY	SVF	HTA
F	21.10.11	Revision IPC Application	ASS	SVF	HTA
E	16.09.11	Revision IPC Application	ASS	SVF	HTA
D	31.08.11	Revision IPC Application	ASS	SVF	HTA
C	30.08.11	Revision IPC Application	ASS	SVF	HTA
B	21.01.11	Revision of Northern Revetment/Breakwater	ASS	SVF	HTA
A	07.01.11	EIA Masterplan Revision	ASS	SVF	HTA
0	17.09.10	Preliminary Issue	CBR	SVF	HTA


 Able UK Ltd
 Able House
 Billingham
 Teesside UK
 TS23 1PX
 Tel: +44-(0)1642 806080
 Fax: +44-(0)1642 656655
 email: info@ableuk.com
 www.ableuk.com

Project:	ABLE Marine Energy Park
Client:	ABLE UK Ltd
Title:	Indicative Piling Layout

PRELIMINARY


 Civil Engineering and Marine Works
 Lübeckertordamm 1
 20099 Hamburg / Germany
 Tel. 0049- 40 / 21 986 - 0
 Fax. 0049- 40 / 21 986 - 200

Scale:	1:250	Drawn By	Checked By	Approved By
	1:2500 @A1	CBR	SVF	HTA
Date:	17.09.2010	17.09.2010	17.09.2010	
Drawing No.	AMEP_P1D_D_002	Revision:		G