

June 2023

London Luton Airport Expansion

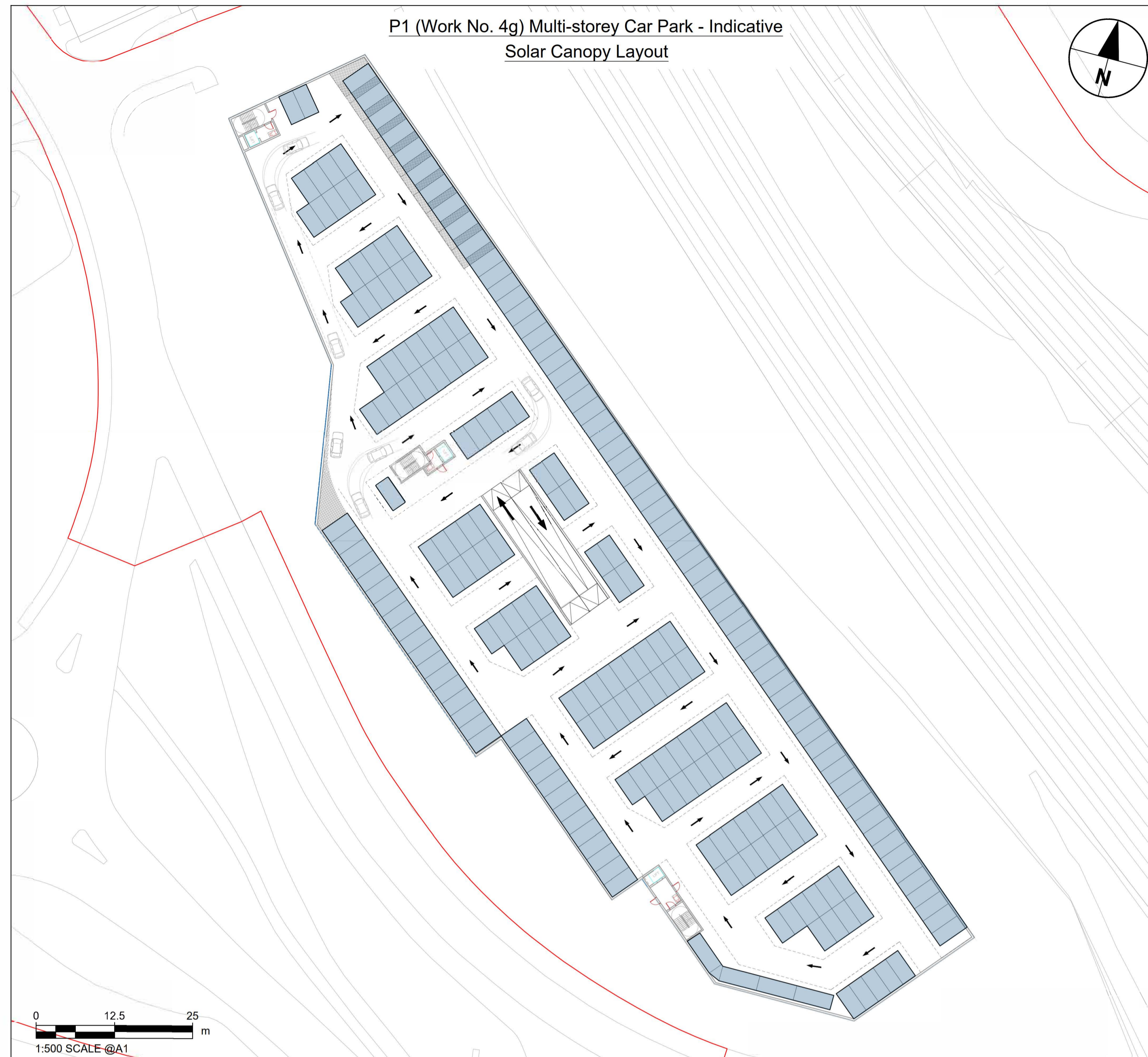
Planning Inspectorate Scheme Ref: TR020001

Volume 4 Plans and Sections

**4.16 Elevation and Arrangement Drawings for Car Parks P1
and P2**

Application Document Ref: TR020001/APP/4.16

APFP Regulation: 5(2)(o)



NOTES

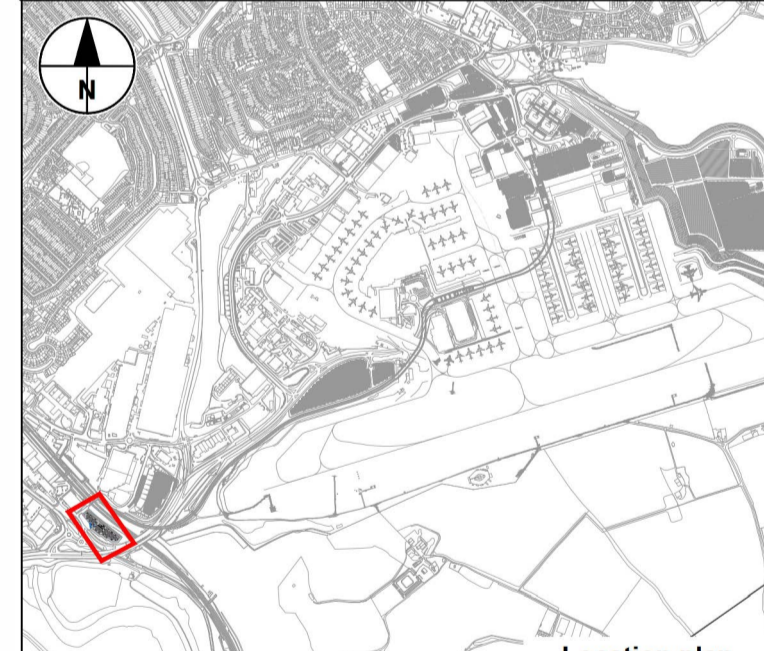
1. This drawing is an indicative layout and can only be used for information purposes.
2. Exact details concerning configuration and dimensions will be determined and designed at the detailed design stage in line with provisions of the DCO (including column and inverter configuration).
3. All dimensions are in metres unless otherwise stated.
4. For wider context, refer to proposed facility P1 on the Scheme Layout Plans (TR020001/APP4.02).
5. Refer to glint and glare assessment dated August 2023.
6. For P1 elevations please refer to drawing: LLADCO-3C-CAP-STR-PRK-DR-AR-1294

KEY

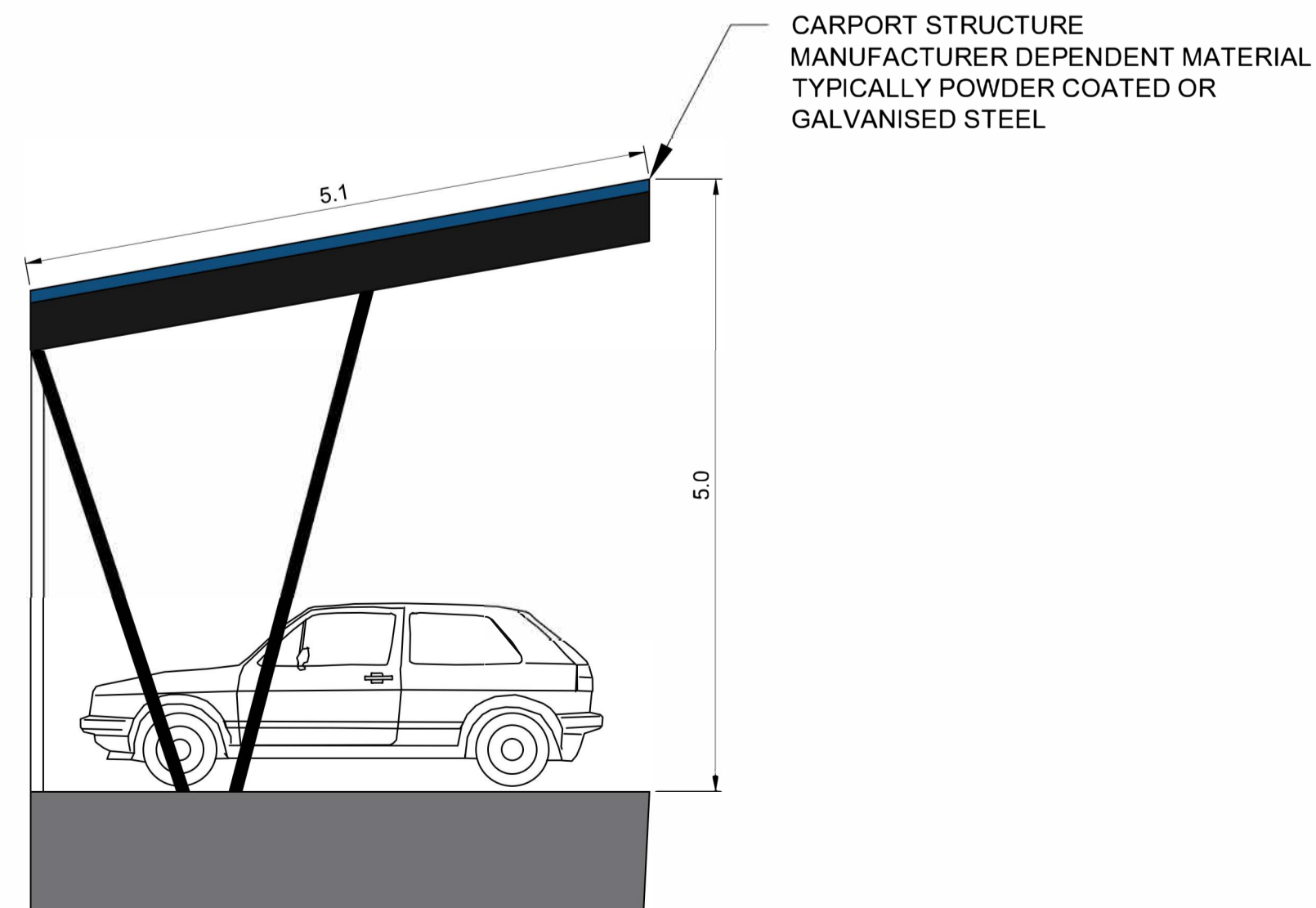
- Proposed PV Panels
- Indicative Car Parking Spaces

INDICATIVE LAYOUT

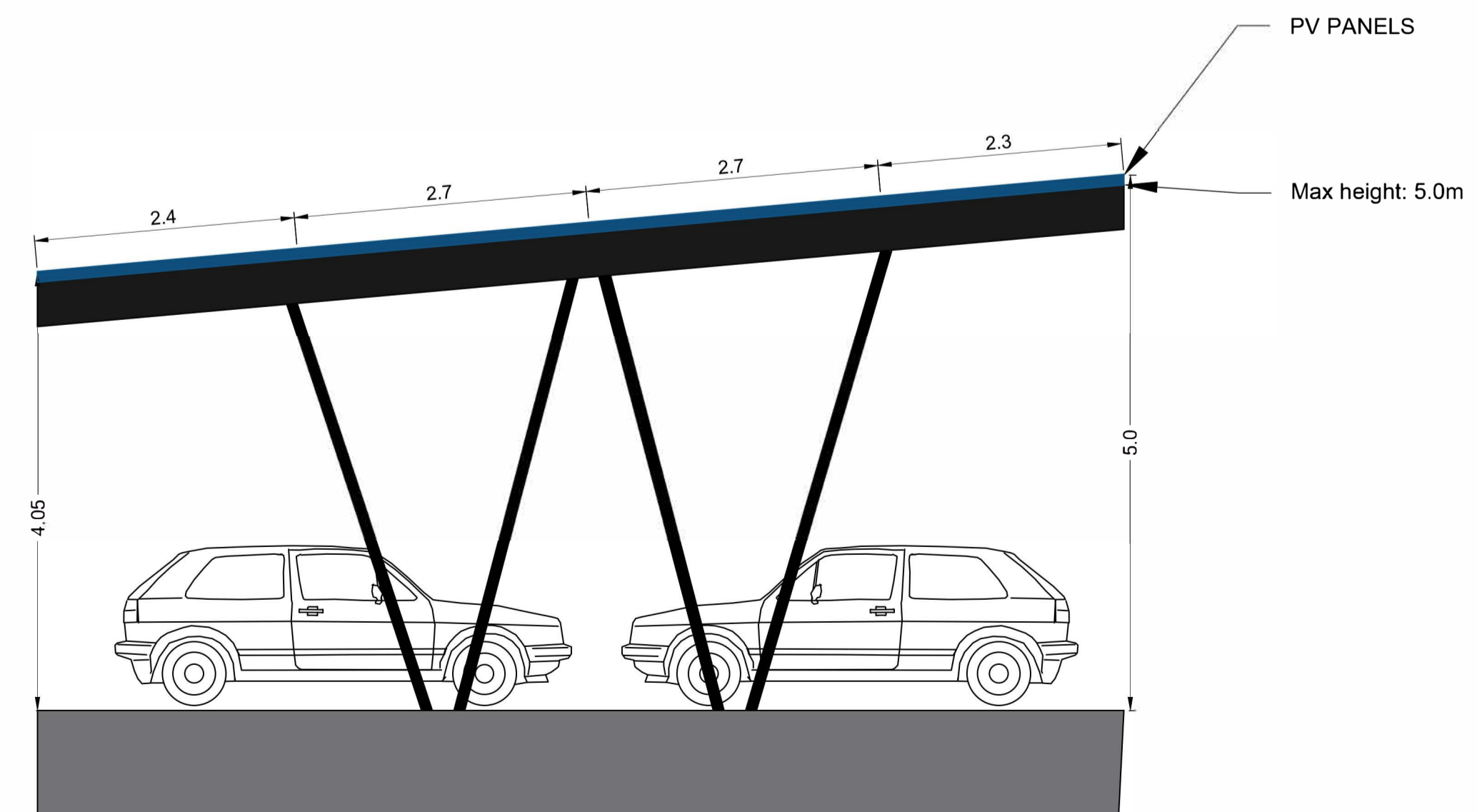
Revision History	Drawn	Checked	MS	06/23	P01
		Approved		Date	Rev.



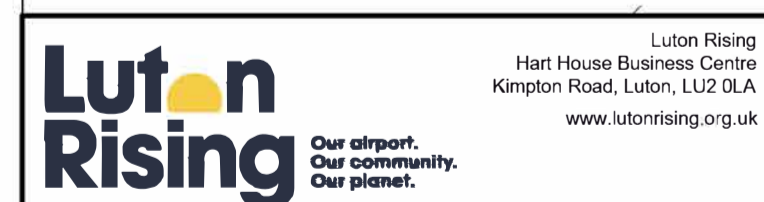
V-FRAME SINGLE ROW MONOPITCH SOLAR CARPORT



V-FRAME DOUBLE ROW MONOPITCH SOLAR CARPORT



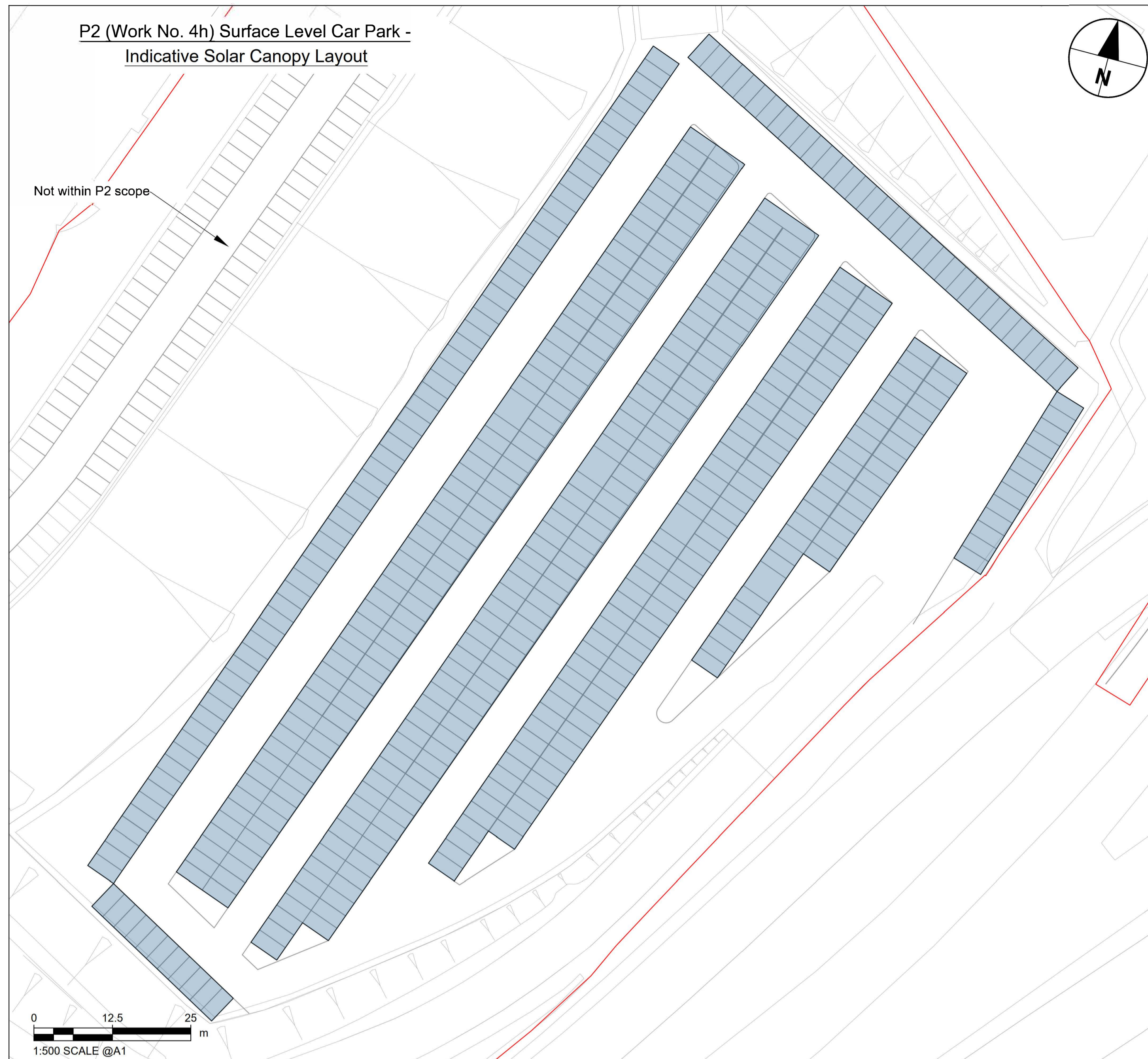
0 1.25 2.5 m
1:50 SCALE @A1



London Luton Airport Development Consent Order

Drawing Title
INDICATIVE GENERAL ARRANGEMENT CAR PARK P1 SOLAR CAR PORT

Purpose of issue	Additional Submissions (PINS request 13 June 2023)	Suitability	S6
Drawn	Checked	Approved	Date
AS	SR	MS	06/23
DCO Application Ref.	APFP Regulation	DCO Document Ref.	
TR020001	5(2)(o)	TR020001/APP4.16	
Drawing Number	LLADCO-3C-ACM-INF-MSC-DR-AR-0002		Revision
Project - Phase - Originator - AssetZone - Sub Asset - Type - Discp. - Number			P01



NOTES

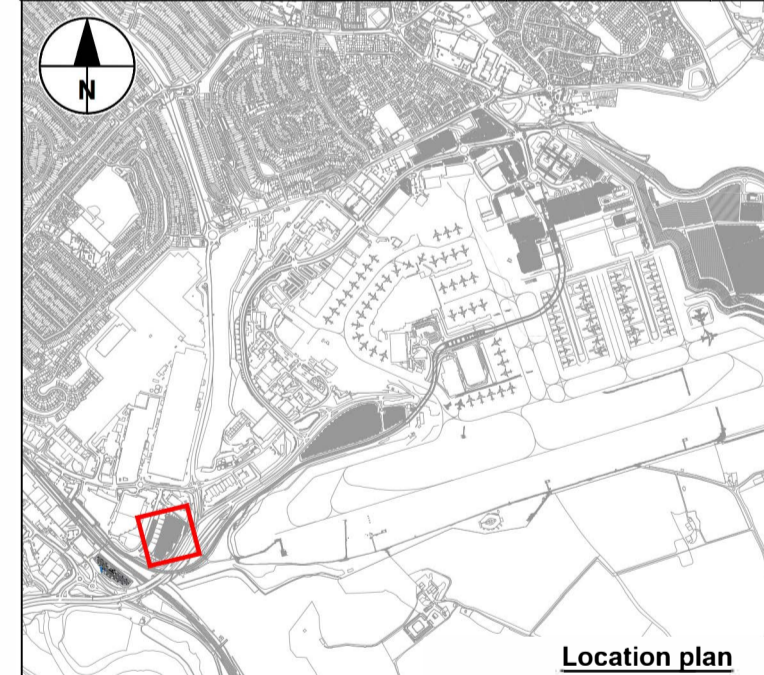
1. This drawing is an indicative layout and can only be used for information purposes.
2. Exact details concerning configuration and dimensions will be determined and designed at the detailed design stage in line with provisions of the DCO (including column and inverter configuration).
3. All dimensions are in metres unless otherwise stated.
4. For wider context, refer to proposed facility P2 on the Scheme Layout Plans (TR020001/APP4.02).
5. Refer to glint and glare assessment dated August 2023.

KEY

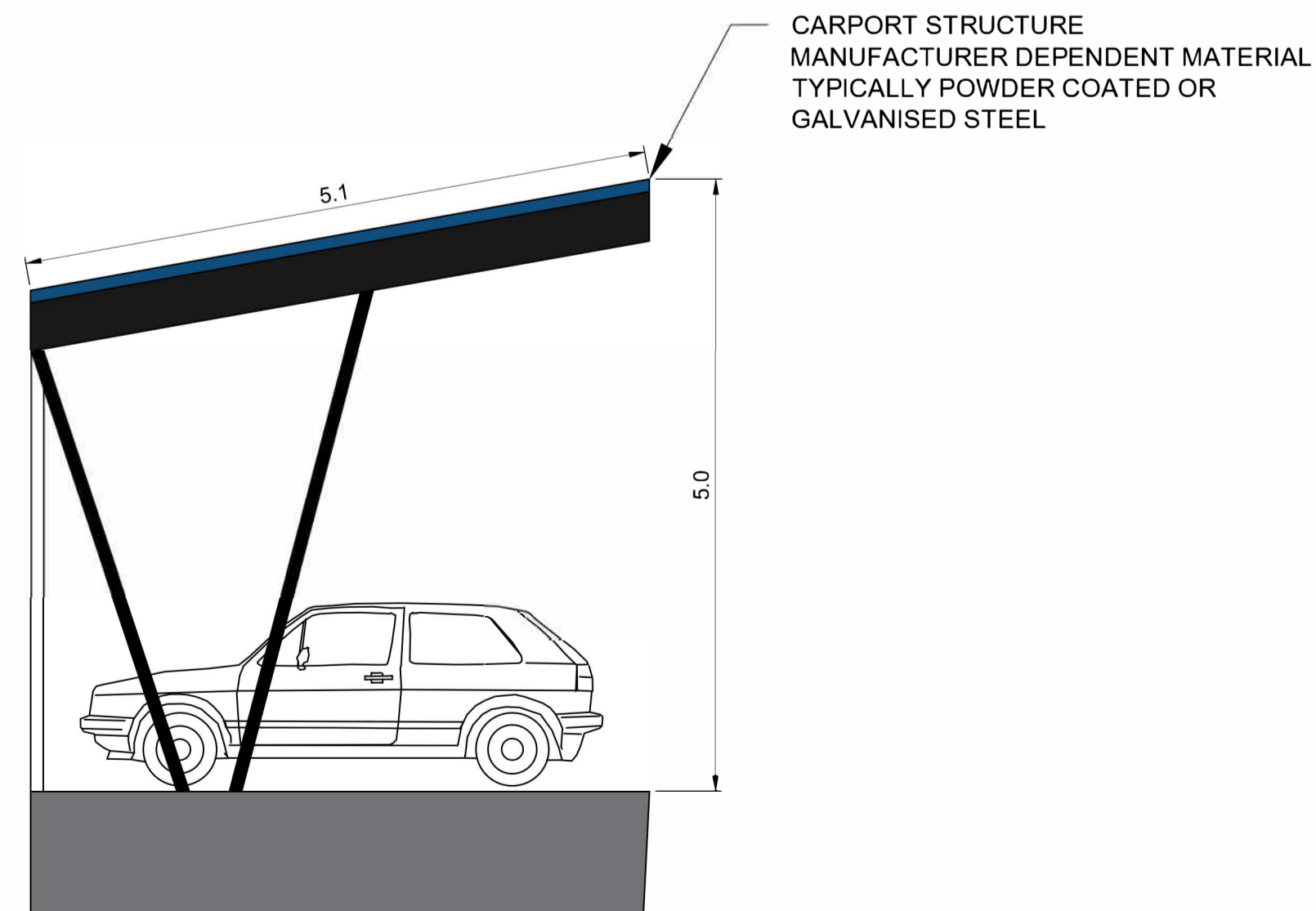
- Proposed PV Panels
- Indicative Car Parking Spaces

INDICATIVE LAYOUT

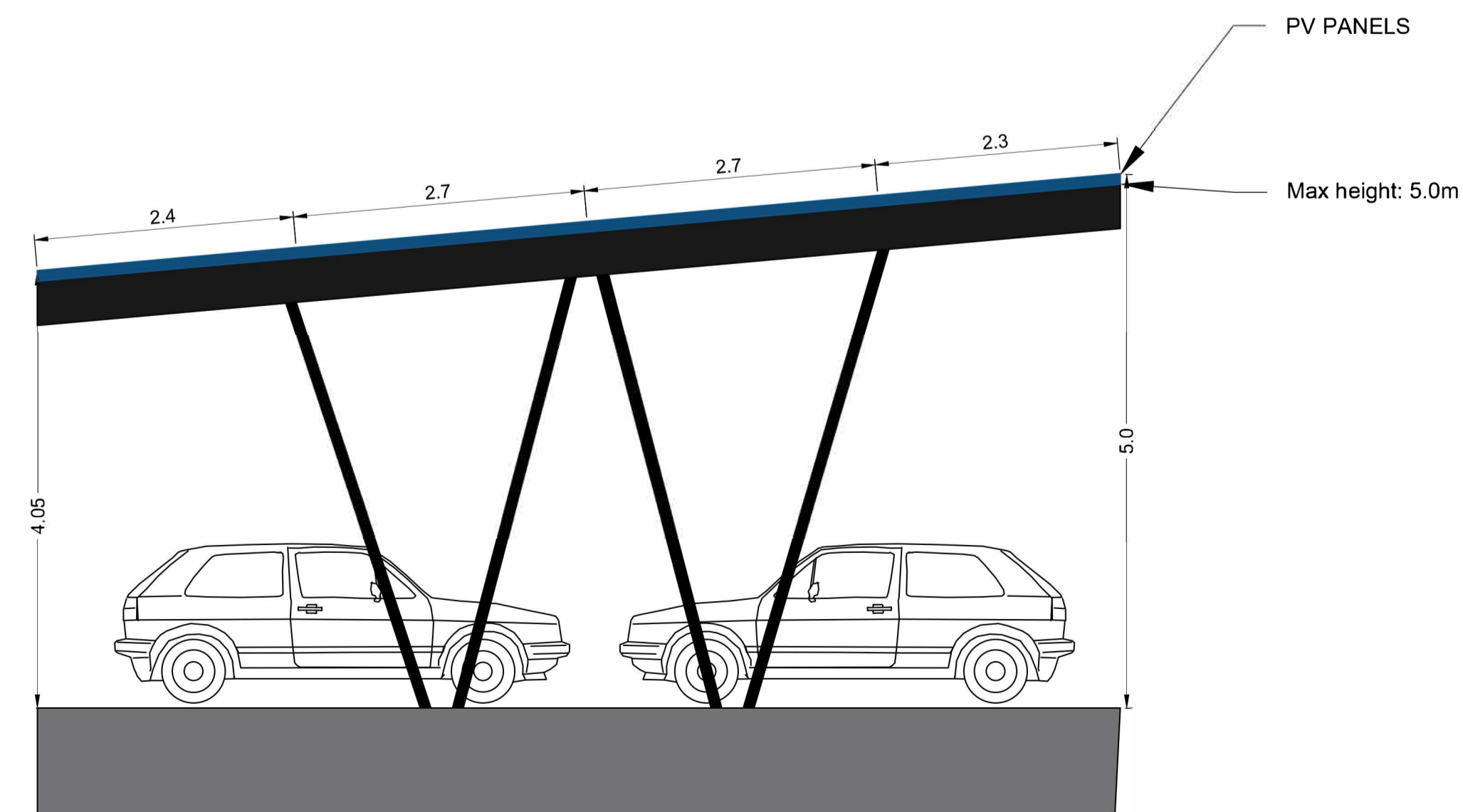
Revision History	Drawn	Checked/Approved	Date	Rev.
		SR MS	06/23	P01



V-FRAME SINGLE ROW MONOPITCH SOLAR CARPORT



V-FRAME DOUBLE ROW MONOPITCH SOLAR CARPORT



0 1.25 2.5 m
1:50 SCALE @A1

Luton Rising
 Luton Rising
 Hart House Business Centre
 Kington Road, Luton, LU2 0LA
 www.lutonrising.org.uk

London Luton Airport Development Consent Order

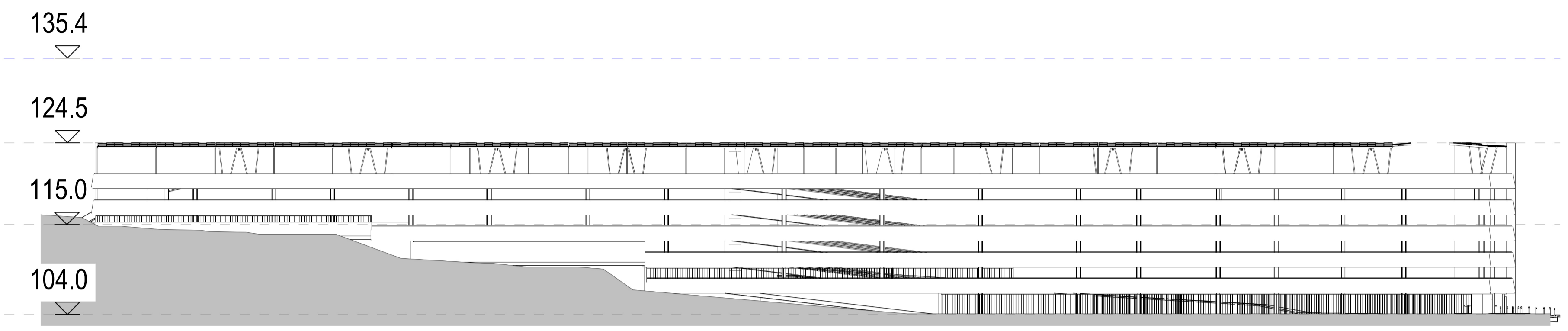
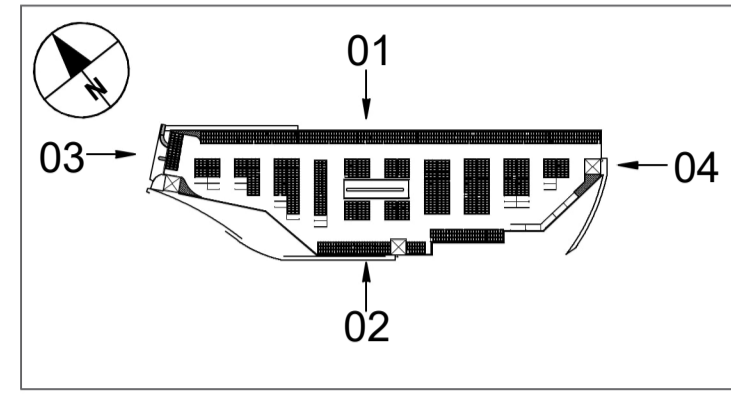
Drawing Title
INDICATIVE GENERAL ARRANGEMENT SOLAR CARPORT - P2

Purpose of issue				Additional Submissions (PINS request 13 June 2023)		Suitability	
						S6	
Drawn	Checked	Approved	Date	Scale	Size		
AS	SR	MS	06/23	AS SHOWN	A1		
DCO Application Ref.		APFP Regulation		DCO Document Ref.			
TR020001		5(2)(o)		TR020001/APP4.16			
Drawing Number							Revision
LLADCO-3C-ACM-INF-MS-DR-AR-0003							P01
Project - Phase - Originator - AssetZone - Sub Asset - Type - Discp. - Number							

- NOTES**
1. This drawing is an indicative layout and can only be used for information purposes.
 2. Exact details concerning configuration and dimensions will be determined and designed at the detailed design stage in line with provisions of the DCO.
 3. Parameter heights are shown in metres - above ordinance datum (AOD).
 4. For wider context, refer to proposed facility P1 on the Scheme Layout Plans (TR020001/APP/4.02).

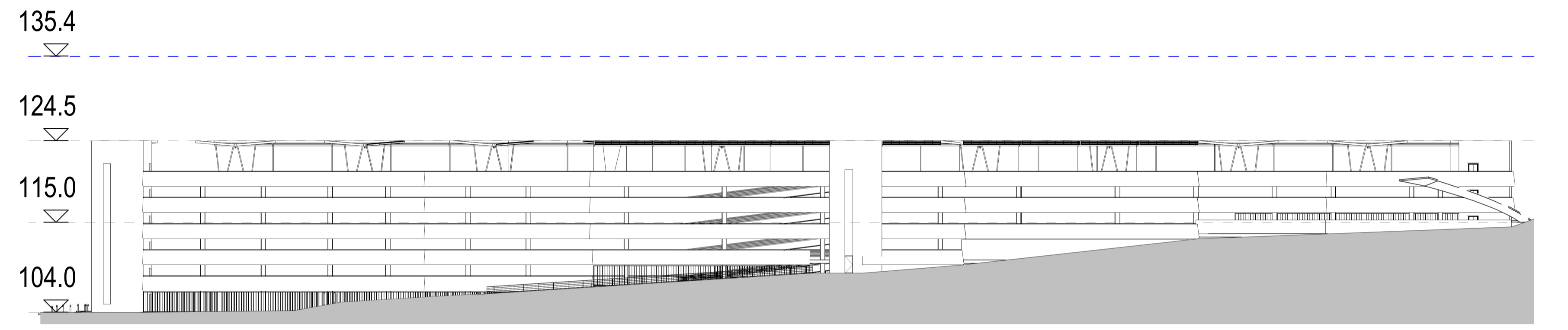
KEY

	Parameter height (AOD)
	Parameter height lines
	Maximum Parameter height lines



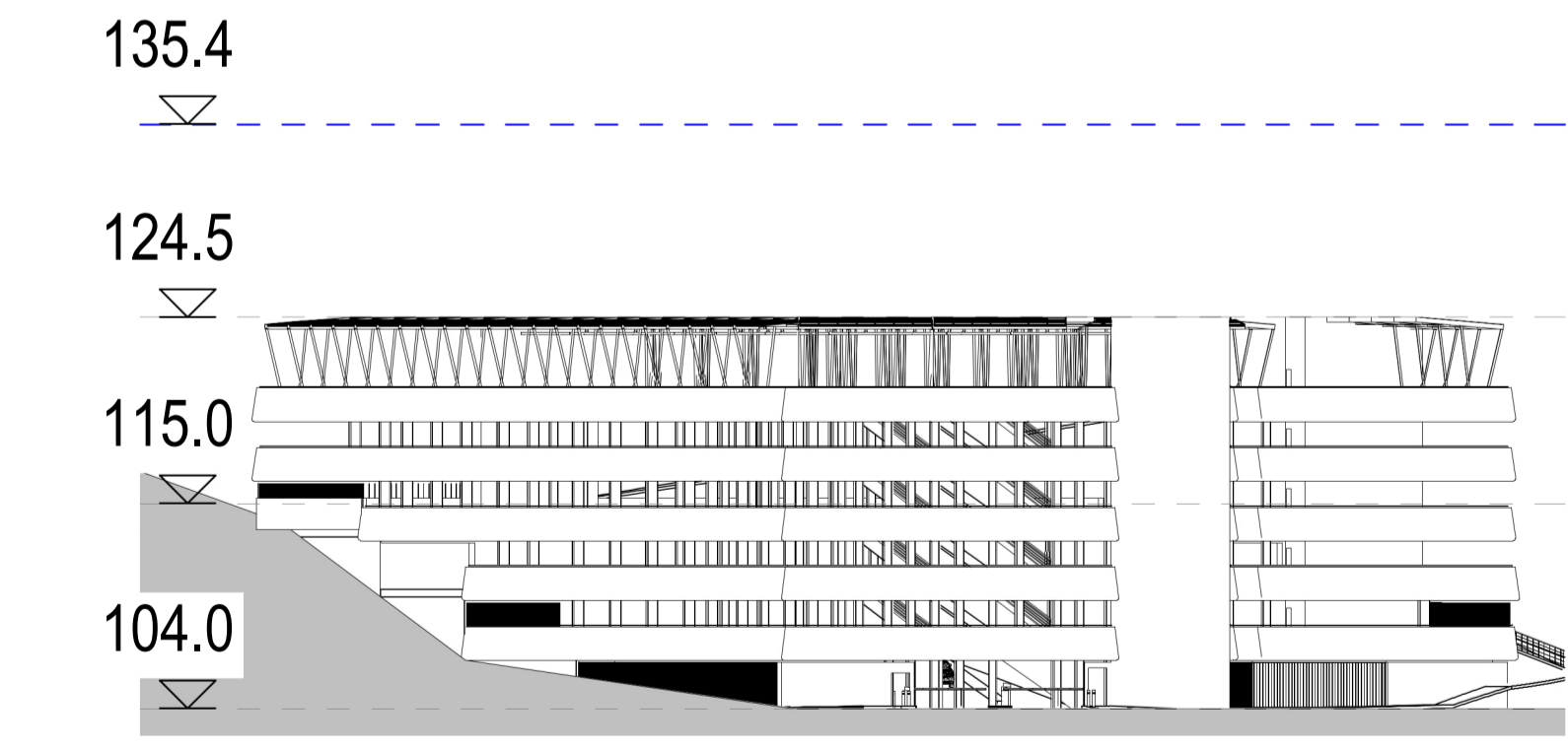
1 Elevation 1
 Scale 1 : 400 @ A1

 1:400 SCALE @A1



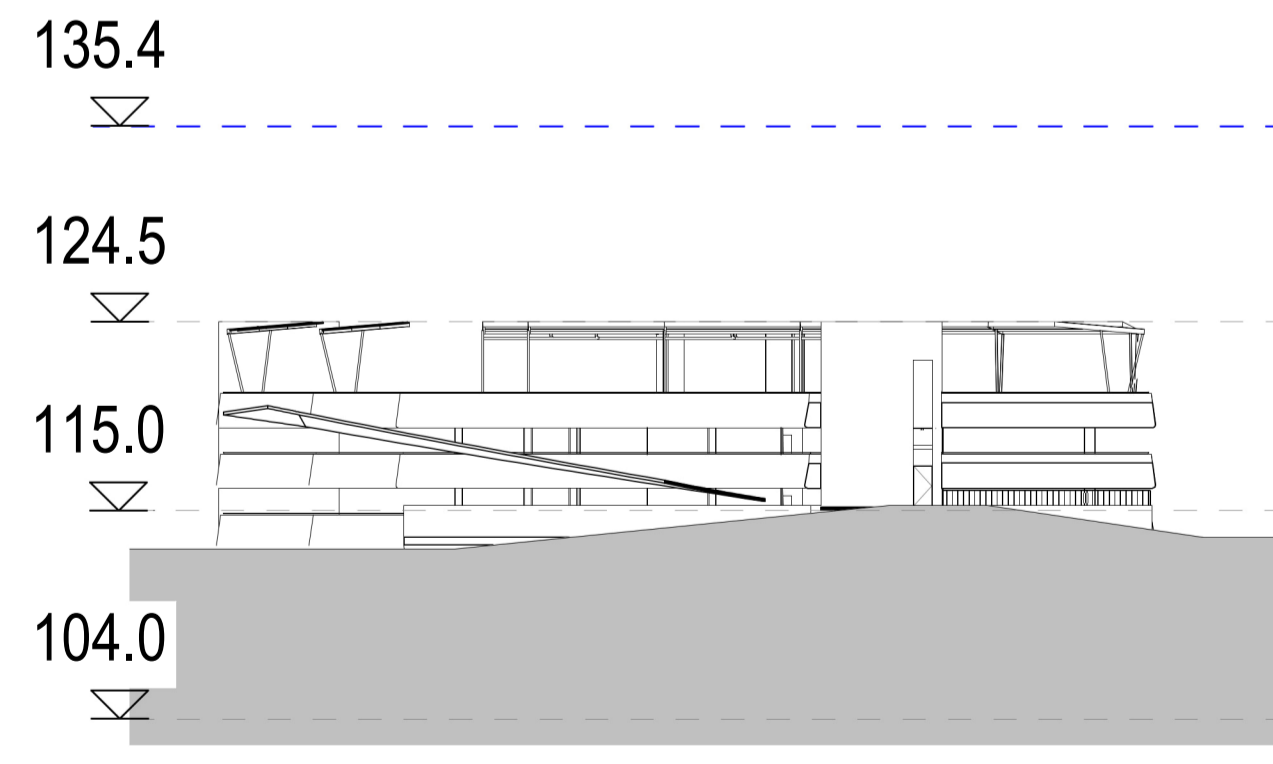
2 Elevation 2
 Scale 1 : 400 @ A1

 1:400 SCALE @A1



3 Elevation 3
 Scale 1 : 400 @ A1

 1:400 SCALE @A1

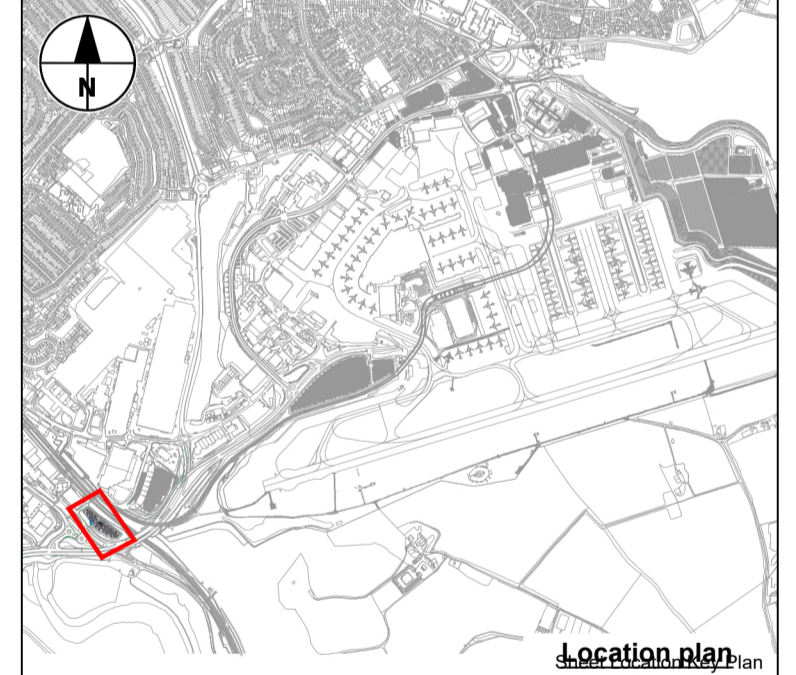


4 Elevation 4
 Scale 1 : 400 @ A1

 1:400 SCALE @A1

INDICATIVE LAYOUT

Revision History	LC	GRM	GU	06/23	P01
Drawn	Checked	Approved	Date	Rev.	



**London Luton Airport
 Development Consent Order**

INDICATIVE
 TIERED CAR PARK (P1)
 ELEVATION

Purpose of Issue Additional Submissions (PINS request 13 June 2023)				Suitability S6	
Drawn	Checked	Approved	Date	Scale	Size
LC	GRM	GU	06/23	1:400	A1
DCO Application Ref. TR020001		APPF Regulation 5(2)(c)		DCO Document Ref. TR020001/APP/4.16	
Drawing Number LLADCO-3C-CAP-STR-PRK-DR-AR-1294				Revision P01	
Project - Phase - Originator - AssetZone - Sub Asset - Type - Desc. - Number					