

April 2023

# London Luton Airport Expansion

Planning Inspectorate Scheme Ref: TR020001

Volume 4 Plans and Sections  
**4.02 Scheme Layout Plans**

Application Document Ref: TR020001/APP/4.02  
APFP Regulation: 5(2)(o)

**The Planning Act 2008**

**The Infrastructure Planning (Applications: Prescribed Forms and Procedure) Regulations 2009**

**London Luton Airport Expansion Development Consent Order 202x**

---

**4.02 Scheme Layout Plans**

---

<b>Regulation number:</b>	Regulation 5(2)(o)
<b>Planning Inspectorate Scheme Reference:</b>	TR020001
<b>Document Reference:</b>	TR020001/APP/4.02
<b>Author:</b>	Luton Rising

<b>Version</b>	<b>Date</b>	<b>Status of Version</b>
Issue 1	February 2023	Application issue
Revision 1	April 2023	Additional submissions (amended following section 51 advice)

# Contents

---

	Page	
<b>1</b>	<b>Scheme Layout Plans</b>	<b>2</b>
1.1	Purpose of this document	2
1.2	Scope and format of the Scheme Layout Plans	2
1.3	Scheme Layout Plans Drawing List	2

# 1 SCHEME LAYOUT PLANS

## 1.1 Purpose of this document

- 1.1.1 Luton Rising (a trading name of London Luton Airport Limited), owners of London Luton Airport (the Applicant) has submitted an application under section 37 of the Planning Act 2008 for an order to grant development consent for the expansion of London Luton Airport (the Proposed Development).
- 1.1.2 This document is part of a suite of documents which forms part of the application for development consent. A full description of all the Application Documents is provided in the Introduction to the Application) [TR020001/APP/1.03] which also forms part of the suite of application documents.
- 1.1.3 This document is included in the application to comply with Regulation 5(2)(k) and Regulation 5(4) of the Infrastructure Planning (Applications: Prescribed Forms and Procedures) Regulations 2009 (“the 2009 Regulations”), which requires:
- a. 5(2)(o) ‘any other plans, drawings and sections necessary to describe the proposals for which development consent is sought, showing details of design, external appearance, and the preferred layout of buildings or structures, drainage, surface water management, means of vehicular and pedestrian access, any car parking to be provided, and means of landscaping.’
- 1.1.4 As this document is part of the application documentation, it should be read alongside, and is informed by, the other application documents. In particular, the Scheme Layout Plans should be read alongside the Works Plans [TR020001/APP/4.04].

## 1.2 Scope and format of the Scheme Layout Plans

- 1.2.1 The purpose of the Scheme Layout Plans is to show how the works are anticipated to come together over time to form the Proposed Development. They are provided for information only as a helpful aid to assist in understanding the phased approach of the development that will span a number of years in order to appropriately respond to demand over time. More information on this approach to the development can be found in Chapter 5 of the Environmental Statement [TR020001/APP/5.01].
- 1.2.2 The Scheme Layout Plans use a smaller scale of 1:5000, than that prescribed in Regulation 5(3) of the 2009 Regulations but only so that the Proposed Development can be represented in a single sheet plan as a helpful aid.

## 1.3 Scheme Layout Plans Drawing List

Scheme Layout Plans Drawing Name	Drawing Number
Scheme Layout Future Baseline Plan	LLADCO-3C-CAP-WHS-GEN-DR-AR-1100
Indicative Scheme Layout Plan Assessment Phase 1	LLADCO-3C-CAP-WHS-GEN-DR-AR-1220
Indicative Scheme Layout Plan Assessment Phase 2a	LLADCO-3C-CAP-WHS-GEN-DR-AR-1240
Indicative Scheme Layout Plan Assessment Phase 2b	LLADCO-3C-CAP-WHS-GEN-DR-AR-1260

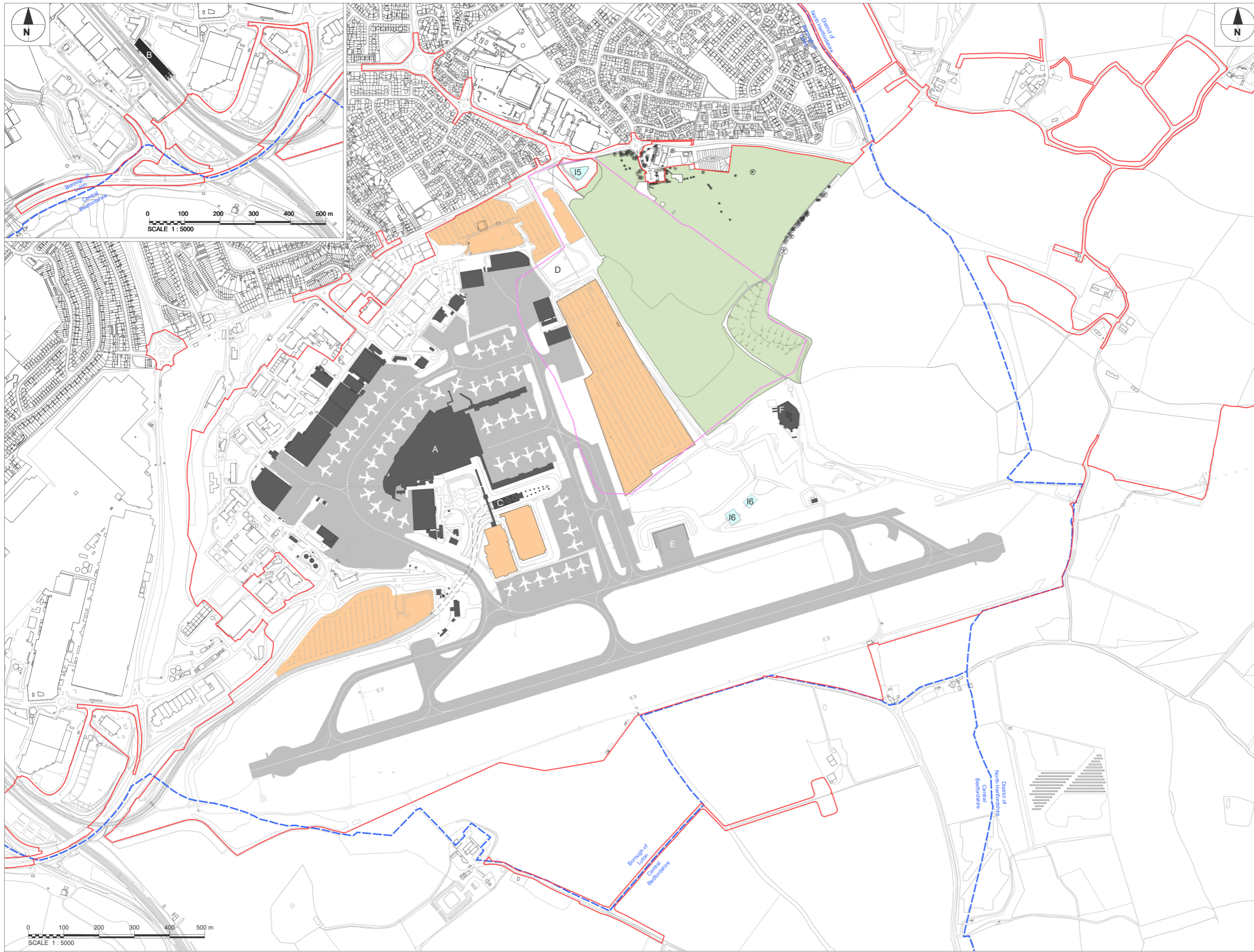
This drawing may contain mapping by permission of Ordnance Survey on behalf of HMISO © Crown Copyright and database rights 2022 Ordnance Survey 0100031673  
 All structure positions are indicative. The proposed works will be subject to detailed design development. The changes will be within limits of deviation specified in the Development Consent Order.

**NOTES**

1. This plan depicts the anticipated layout of the airport upon completion of works approved under extant Town and Country Planning Act permissions and permitted development rights. This differs from the current layout of the airport.
2. Exact details concerning configuration and dimensions will be determined and designed at the detailed design stage in line with provisions of the DCO.
3. All dimensions are in metres unless otherwise stated.

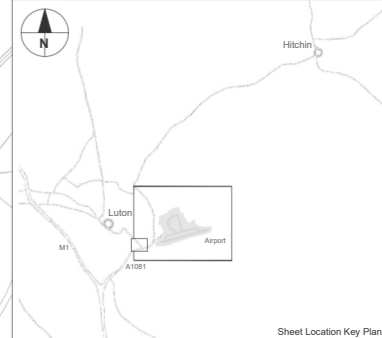
**KEY**

- Order Limits
  - - - Local Authority Boundary
  - - - Former Eaton Green Landfill Boundary
- A Airport support facilities
  - B Terminal 1
  - C Luton DART Terminal 1 Station
  - D Eaton Green Civic Amenity Site
  - E Engine Run Up Bay (ERUB)
  - F Fire training ground
  - Airfield
  - Wigmore Valley Park
  - Parking
  - I5 Northern Soakaway
  - I6 Central Soakaway



**INDICATIVE LAYOUT**

DCO Submission	YM	GRM	27.02.23	P01
Revision History	Drawn	Checked	Approved	Date



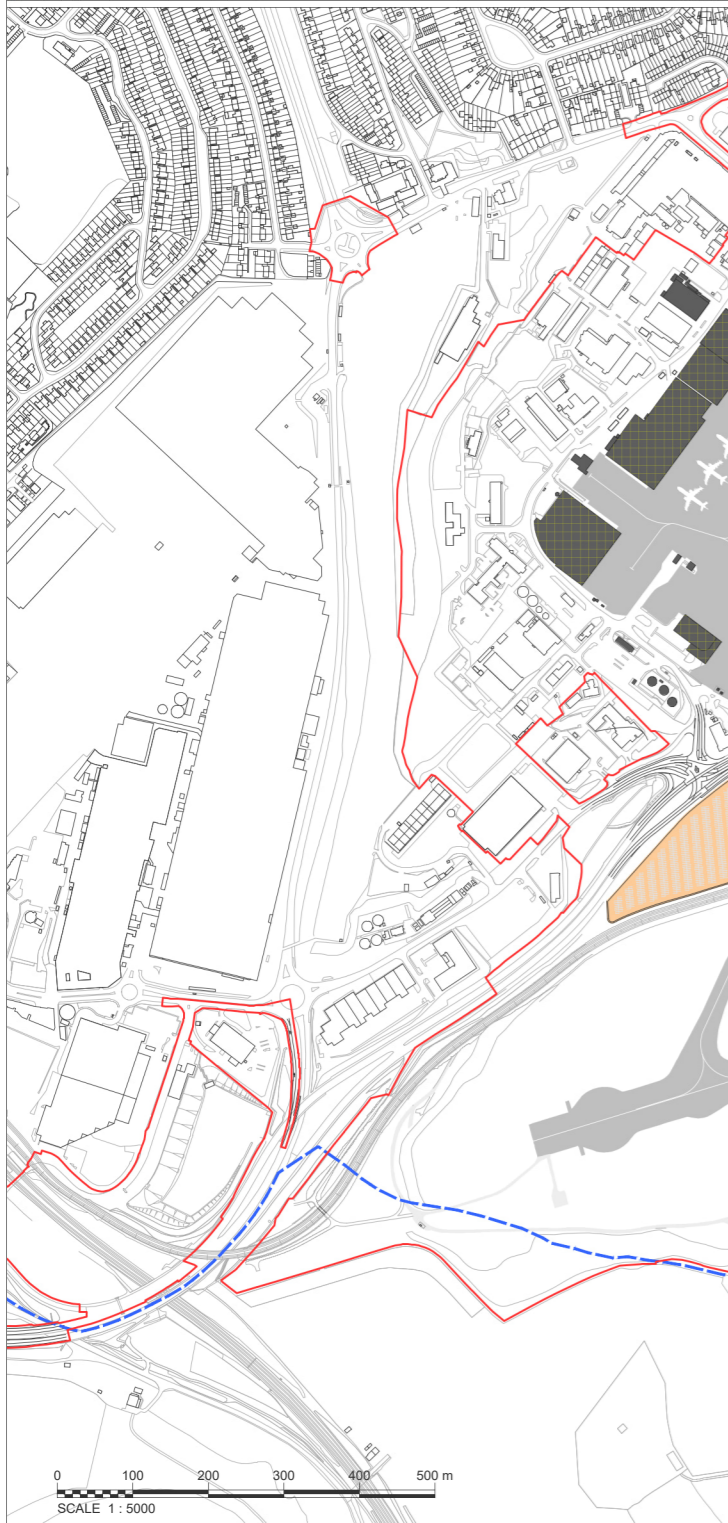
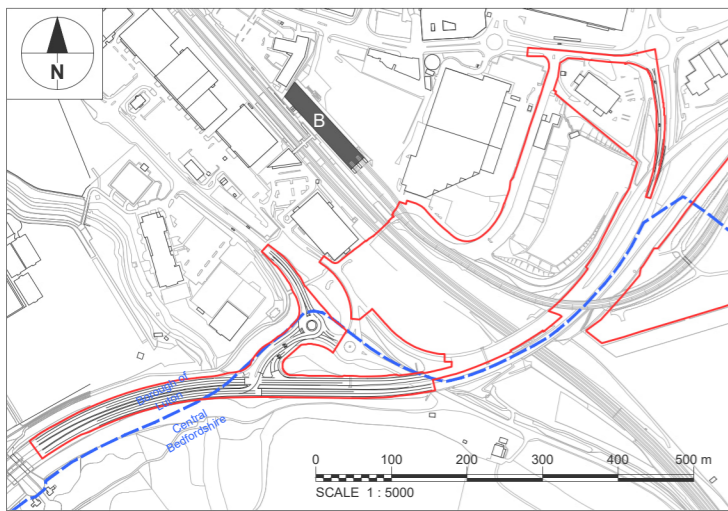
**Luton Rising** Our airport. Our community. Our planet.  
 Luton Rising  
 Hart House Business Centre  
 Kimpton Road, Luton, LU2 0LA  
 www.lutonrising.org.uk

**London Luton Airport Expansion Development Consent Order**

Drawing Title  
**Indicative Scheme Layout Plan  
 Future Baseline**

Purpose of issue				Suitability	
DCO SUBMISSION				S6	
Drawn	Checked	Approved	Date	Scale	Size
TT	GRM	GU	27.02.23	1:5000	A1
DCO Application Ref.		APFP Ref.	DCO Document Ref.		
TR020001		5(2)(o)	TR020001/APP/4.02		
Drawing Number					Revision
LLADCO-3C-CAP-WHS-GEN-DR-AR-1100					P01
Project - Phase - Originator - Asset2Zone - Sub Asset - Type - Disp. - Number					

Indicative Scheme Layout Plan - Future Baseline  
 Scale 1:5000 @ A1



This drawing may contain mapping by permission of Ordnance Survey on behalf of HMSO © Crown Copyright and database rights 2022 Ordnance Survey 0100031673  
 All structure positions are indicative. The proposed works will be subject to detailed design development. The changes will be within limits of deviation specified in the Development Consent Order.

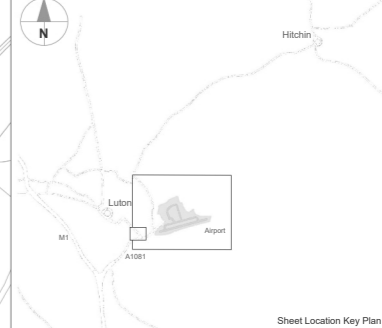
- NOTES**
1. This plan depicts the anticipated layout of the airport upon completion of works approved under extant Town and Country Planning Act permissions and permitted development rights. This differs from the current layout of the airport.
  2. Exact details concerning configuration and dimensions will be determined and designed at the detailed design stage in line with provisions of the DCO.
  3. All dimensions are in metres unless otherwise stated.

- KEY**
- Order Limits
  - Local Authority Boundary
  - Former Eaton Green Landfill Boundary
  - Airport support facilities
  - Terminal 1
  - Luton DART Parkway Station
  - Luton DART Terminal 1 Station
  - Eaton Green Civic Amenity Site
  - Engine Run Up Bay (ERUB)
  - Fire training ground
  - Terminal 1 extension
  - Terminal 1 campus: rainwater harvesting
  - Airfield
  - Airfield extension
  - Landscape areas and replacement open space
  - Stockpile area
  - Surcharge zone
  - Northern Soakaway
  - Central Soakaway
  - Proposed facilities
  - 1 Surface Movement Radar (SMR)
  - 2 33 kV Substation
  - Parking
  - P3 Surface parking (Mid-Stay)
  - P4 Multi Storey Car Park
  - P5 Surface parking
  - P6 Surface parking
  - P7 Surface parking
  - P8 Surface parking
  - P9 Surface parking
  - Adjacent developments not part of DCO:
  - V Green Horizons Park - Warehouse

**INDICATIVE LAYOUT**

Additional submissions (amended following section 51 advice)	YM	GRM	April 2023	P02
DCO Submission	YM	GRM	27.02.23	P01

Revision History	Drawn	Checked	Approved	Date	Rev.



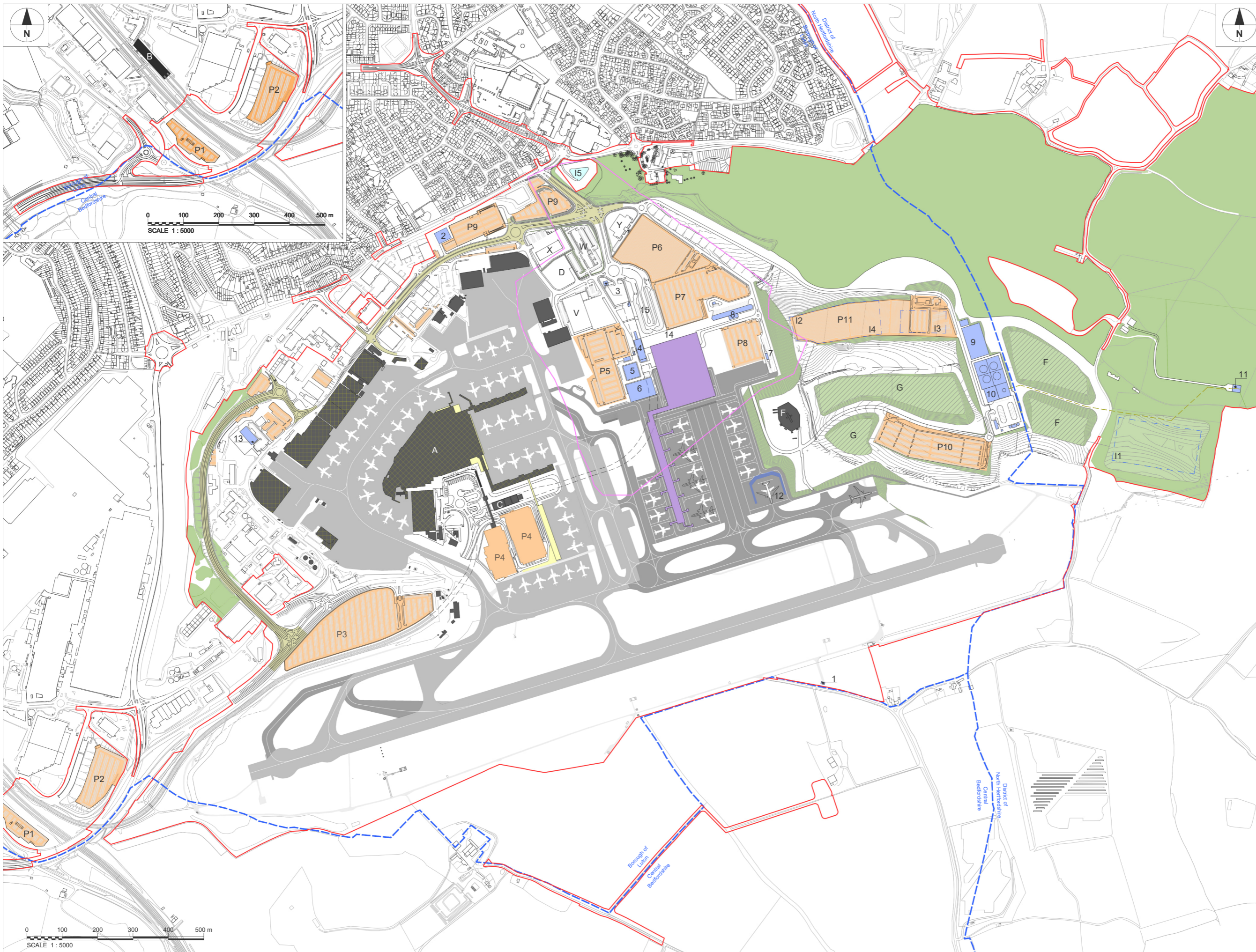
**Luton Rising** Our airport. Our community. Our planet.  
 Luton Rising  
 Hart House Business Centre  
 Kimpton Road, Luton, LU2 0LA  
 www.lutonrising.org.uk

**London Luton Airport Expansion Development Consent Order**

Drawing Title  
**Indicative Scheme Layout Plan Assessment Phase 1**

Purpose of issue (Additional submissions (amended following section 51 advice))				Suitability	
				S6	
Drawn	Checked	Approved	Date	Scale	Size
TT	GRM	GU	27.02.23	1:5000	A1
DCO Application Ref.		APFP Reg.	DCO Document Ref.		
TR020001		5(2)(o)	TR020001/APP/4.02		
Drawing Number					Revision
LLADCO-3C-CAP-WHS-GEN-DR-AR-1220					P02
Project - Phase - Originator - AssetZone - Sub Asset - Type - Disc - Number					

Indicative Scheme Layout Plan - Assessment Phase 1  
 Scale 1:5000 @ A1



This drawing may contain mapping by permission of Ordnance Survey on behalf of HMSO © Crown Copyright and database rights 2022 Ordnance Survey 0100031673  
 All structure positions are indicative. The proposed works will be subject to detailed design development. The changes will be within limits of deviation specified in the Development Consent Order.

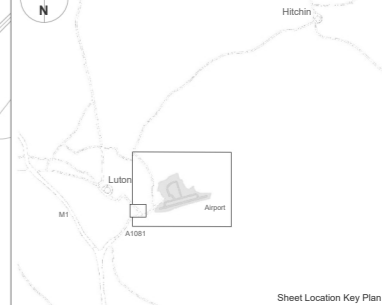
- NOTES**
1. This plan depicts the anticipated layout of the airport upon completion of works approved under extant Town and Country Planning Act permissions and permitted development rights. This differs from the current layout of the airport.
  2. Exact details concerning configuration and dimensions will be determined and designed at the detailed design stage in line with provisions of the DCO.
  3. All dimensions are in metres unless otherwise stated.

- KEY**
- Order Limits
  - Local Authority Boundary
  - Former Eaton Green Landfill Boundary
  - Fuel pipeline
  - Airport support facilities
  - Terminal 1
  - Luton DART Parkway Station
  - Luton DART Terminal 1 Station
  - Eaton Green Civic Amenity Site
  - Fire training ground
  - Terminal 1 extension
  - Terminal 1 campus: rainwater harvesting
  - Terminal 2
  - Airfield
  - Airfield extension
  - Airport Access Road (AAR)
  - Landscape areas and replacement open space
  - Stockpile area
  - Infiltration basin - Soakaway
  - Underground storage system - Soakaway
  - Infiltration tank - Soakaway
  - Permeable paving area
  - Northern Soakaway
- Proposed facilities**
- 1 Surface Movement Radar (SMR)
  - 2 33 kV Substation
  - 3 Emergency assembly area
  - 4 Luton DART Terminal 2 Station
  - 5 Substation
  - 6 Energy centre
  - 7 Airport operations and maintenance
  - 8 Coach station
  - 9 Water treatment plant
  - 10 Fuel storage facility
  - 11 Fuel pipeline connection
  - 12 Engine Run Up Bay (ERUB)
  - 13 Police station
  - 14 Forecourt
  - 15 Drop-off zone
- Parking**
- P1 Multi Storey Car Park (Tiered)
  - P2 Surface parking (Trailer)
  - P3 Surface parking (Mid-Stay)
  - P4 Multi Storey Car Park
  - P5 Deck and surface parking
  - P6 Surface parking
  - P7 Surface parking
  - P8 Surface parking
  - P9 Deck and surface parking
  - P10 Surface parking
  - P11 Surface parking
- Adjacent developments not part of DCO:**
- V Green Horizons Park - Warehouse
  - W Green Horizons Park - Hotel
  - X Technical services building (Hangar 24)
  - Y Green Horizons Park - Offices

**INDICATIVE LAYOUT**

Additional submissions (amended following section 51 advice)	YM	GRM	April 2023	P02
DCO Submission	YM	GRM	27.02.23	P01

Revision History	Drawn	Checked	Approved	Date	Rev.



**Luton Rising**  
 Luton Rising  
 Hart House Business Centre  
 Kimpton Road, Luton, LU2 0LA  
 www.lutonrising.org.uk

**London Luton Airport Expansion Development Consent Order**

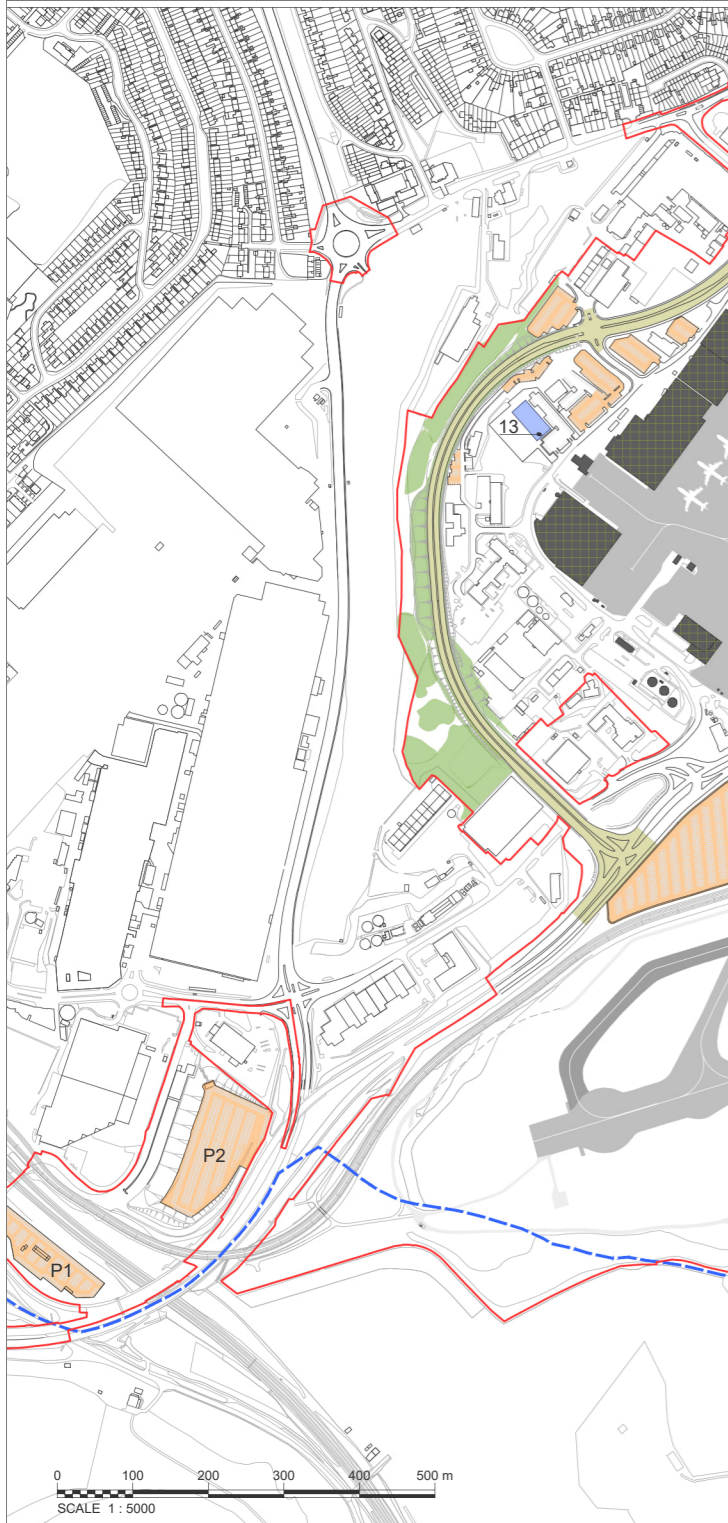
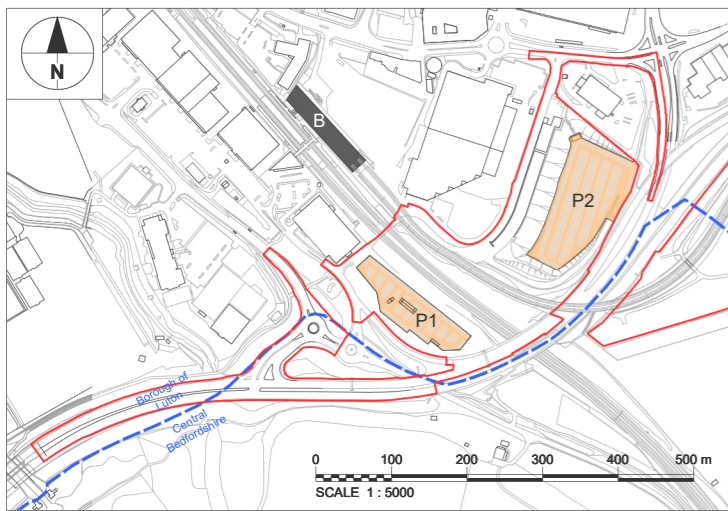
Drawing Title  
**Indicative Scheme Layout Plan Assessment Phase 2a**

Purpose of issue	Additional submissions (amended following section 51 advice)				Suitability
Drawn	Checked	Approved	Date	Scale	Size
TT	GRM	GU	27.02.23	1:5000	A1

DCO Application Ref.	APFP Reg.	DCO Document Ref.
TR020001	5(2)(o)	TR020001/APP/4.02
Drawing Number	Revision	
LLADCO-3C-CAP-WHS-GEN-DR-AR-1240	P02	

Indicative Scheme Layout Plan - Assessment Phase 2a  
 Scale 1:5000 @ A1





This drawing may contain mapping by permission of Ordnance Survey on behalf of HMSO © Crown Copyright and database rights 2022 Ordnance Survey 0100031673  
 All structure positions are indicative. The proposed works will be subject to detailed design development. The changes will be within limits of deviation specified in the Development Consent Order.

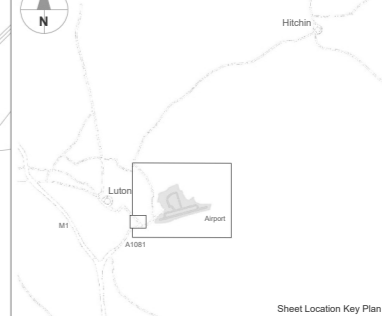
- NOTES**
- This plan depicts the anticipated layout of the airport upon completion of works approved under extant Town and Country Planning Act permissions and permitted development rights. This differs from the current layout of the airport.
  - Exact details concerning configuration and dimensions will be determined and designed at the detailed design stage in line with provisions of the DCO.
  - All dimensions are in metres unless otherwise stated.

- KEY**
- Order Limits
  - Local Authority Boundary
  - Former Eaton Green Landfill Boundary
  - Fuel pipeline
  - Airport support facilities
  - Terminal 1
  - Luton DART Parkway Station
  - Luton DART Terminal 1 Station
  - Eaton Green Civic Amenity Site
  - Terminal 1 extension
  - Terminal 1 campus: rainwater harvesting
  - Terminal 2
  - Airfield
  - Airfield extension
  - Airport Access Road (AAR)
  - Landscape areas and replacement open space
  - I1 Infiltration basin - Soakaway
  - I2 Underground storage system - Soakaway
  - I3 Infiltration tank - Soakaway
  - I4 Permeable paving area
  - I5 Northern Soakaway
  - Proposed facilities
  - 1 Surface Movement Radar (SMR)
  - 2 33 kV Substation
  - 3 Emergency assembly area
  - 4 Luton DART Terminal 2 Station
  - 5 Substation
  - 6 Energy centre
  - 7 Airport operations and maintenance
  - 8 Coach station
  - 9 Water treatment plant
  - 10 Fuel storage facility
  - 11 Fuel pipeline connection
  - 12 Engine Run Up Bay (ERUB)
  - 13 Police station
  - 14 Forecourt
  - 15 Drop-off zone below Multi Storey Car Park
  - 16 Hotel
  - 17 PV battery storage
  - 18 Hangars
  - 19 Fire training ground
  - Parking
  - P1 Multi Storey Car Park (Tiered)
  - P2 Surface parking (Trailer)
  - P3 Surface parking (Mid-Stay)
  - P4 Multi Storey Car Park
  - P5 Deck and surface parking
  - P6 Deck and surface parking
  - P7 Deck and surface parking
  - P8 Surface parking
  - P9 Surface parking
  - P10 Surface parking
  - P11 Surface parking
  - P12 Multi Storey Car Park
  - Adjacent developments not part of DCO:
  - V Green Horizons Park - Warehouse
  - W Green Horizons Park - Hotel
  - X Technical services building (Hangar 24)
  - Y Green Horizons Park - Offices
  - Z Green Horizons Park - Multi Storey Car Park

**INDICATIVE LAYOUT**

Additional submissions (amended following section 51 advice)	YM	GRM	April 2023	P02
DCO Submission	YM	GRM	27.02.23	P01

Revision History	Drawn	Checked	Approved	Date	Rev.



**Luton Rising**  
 Luton Rising  
 Our airport. Our community. Our planet.  
 Luton Rising  
 Hart House Business Centre  
 Kimpton Road, Luton, LU2 0LA  
 www.lutonrising.org.uk

**London Luton Airport Expansion Development Consent Order**

Drawing Title  
**Indicative Scheme Layout Plan Assessment Phase 2b**

Purpose of issue	Additional submissions (amended following section 51 advice)	Suitability
Drawn	Checked	Approved
TT	GRM	GU
DCO Application Ref.	APFP Reg.	DCO Document Ref.
TR020001	5(2)(o)	TR020001/APP/4.02
Drawing Number	LLADCO-3C-CAP-WHS-GEN-DR-AR-1260	Revision
		P02

Indicative Scheme Layout Plan - Assessment Phase 2b  
 Scale 1:5000 @ A1

Project - Phase - Originator - AssetZone - Sub Asset - Type - Disc - Number