

# M5 Junction 10 Improvements Scheme

## Biodiversity Sites and Features Plans - Part 1 TR010063 - APP 2.11

Regulation 5 (2) (I)

Planning Act 2008

Infrastructure Planning (Applications: Prescribed Forms and Procedure) Regulations 2009

Volume 2

March 2024



Gloucestershire  
COUNTY COUNCIL

THIS PAGE IS LEFT INTENTIONALLY BLANK



## Infrastructure Planning Planning Act 2008

### The Infrastructure Planning (Applications: Prescribed Forms and Procedure) Regulations 2009

#### M5 Junction 10 Improvements Scheme Development Consent Order 202[x]

---

#### 2.11 Biodiversity Sites and Features Plans – Part 1

---

<b>Regulation Number:</b>	Regulation 5 (2) (l)
<b>Planning Inspectorate Scheme Reference</b>	TR010063
<b>Application Document Reference</b>	TR010063/APP/2.11
<b>Author:</b>	M5 Junction 10 Improvement Scheme Project Team

<b>Version</b>	<b>Date</b>	<b>Status of Version</b>
Rev 0	December 2023	DCO Application
Rev 1	March 2024	Section 51

# 1. Schedule of Plans included in the application

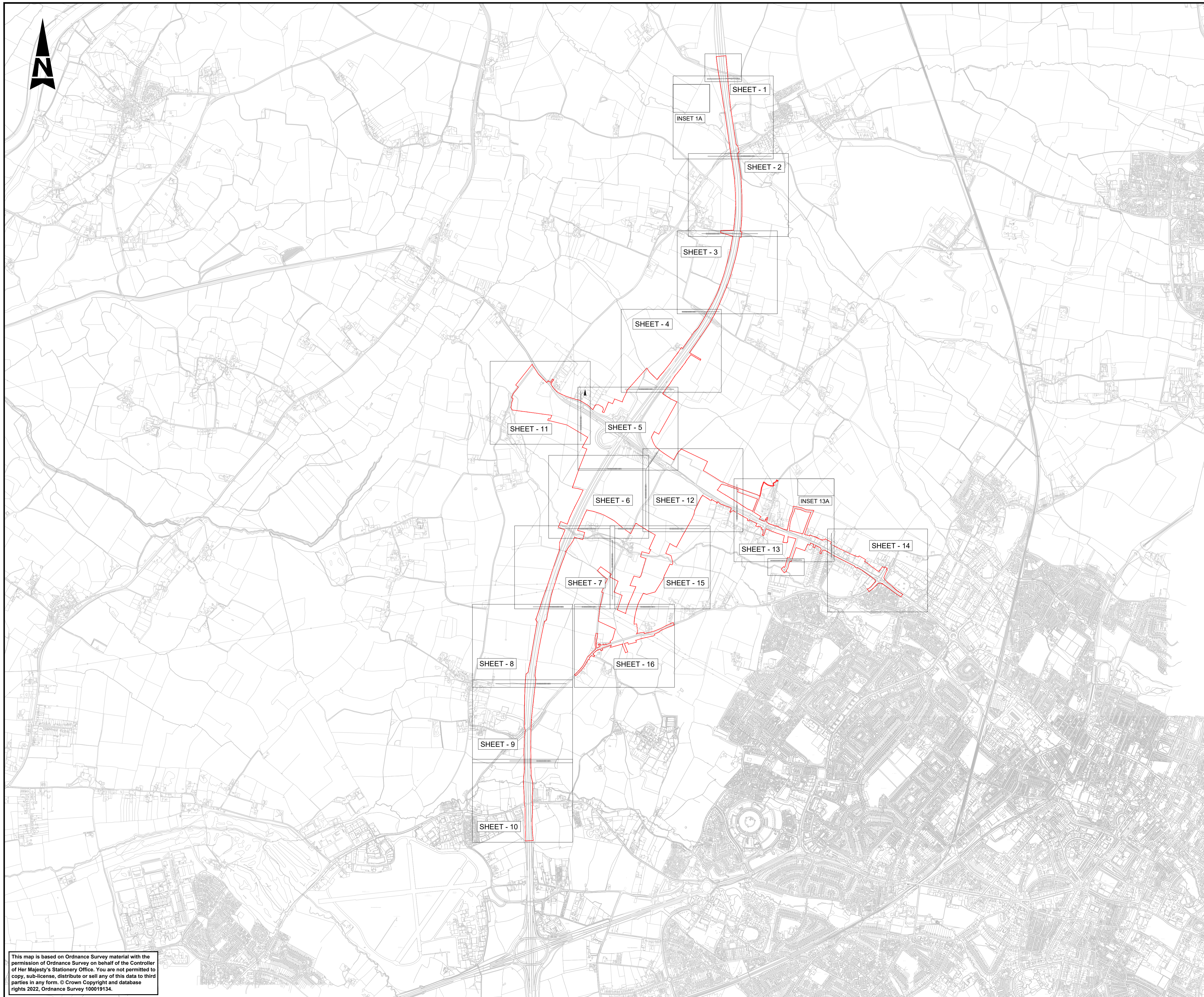
## 1.1. List of drawings in Part 1

Document Title	Document Number	Revision
Biodiversity Sites and Features Plan – Key Plan	TR010063 – APP 2.11	C01
Biodiversity Sites and Features Plan – Site Plan	TR010063 – APP 2.11	<del>C01</del> <b>C02</b>
Biodiversity Sites and Features Plan – Sheet 1 of 16	TR010063 – APP 2.11	C01
Biodiversity Sites and Features Plan – Sheet 2 of 16	TR010063 – APP 2.11	C01
Biodiversity Sites and Features Plan – Sheet 3 of 16	TR010063 – APP 2.11	C01
Biodiversity Sites and Features Plan – Sheet 4 of 16	TR010063 – APP 2.11	C01
Biodiversity Sites and Features Plan – Sheet 5 of 16	TR010063 – APP 2.11	C01
Biodiversity Sites and Features Plan – Sheet 6 of 16	TR010063 – APP 2.11	C01
Biodiversity Sites and Features Plan – Sheet 7 of 16	TR010063 – APP 2.11	C01
Biodiversity Sites and Features Plan – Sheet 8 of 16	TR010063 – APP 2.11	C01
Biodiversity Sites and Features Plan – Sheet 9 of 16	TR010063 – APP 2.11	C01
Biodiversity Sites and Features Plan – Sheet 10 of 16	TR010063 – APP 2.11	C01

## 1.2. List of drawings in Part 2

<b>Document Title</b>	<b>Document Number</b>	<b>Revision</b>
Biodiversity Sites and Features Plan – Sheet 11 of 16	TR010063 – APP 2.11	C01
Biodiversity Sites and Features Plan – Sheet 12 of 16	TR010063 – APP 2.11	C01
Biodiversity Sites and Features Plan – Sheet 13 of 16	TR010063 – APP 2.11	C01
Biodiversity Sites and Features Plan – Sheet 14 of 16	TR010063 – APP 2.11	C01
Biodiversity Sites and Features Plan – Sheet 15 of 16	TR010063 – APP 2.11	C01
Biodiversity Sites and Features Plan – Sheet 16 of 16	TR010063 – APP 2.11	C01





**NOTES:**

1. ALL DIMENSIONS ARE IN METRES UNLESS OTHERWISE STATED.
2. THE WORKS PLANS SHOULD BE READ IN CONJUNCTION WITH THE DEVELOPMENT CONSENT ORDER.

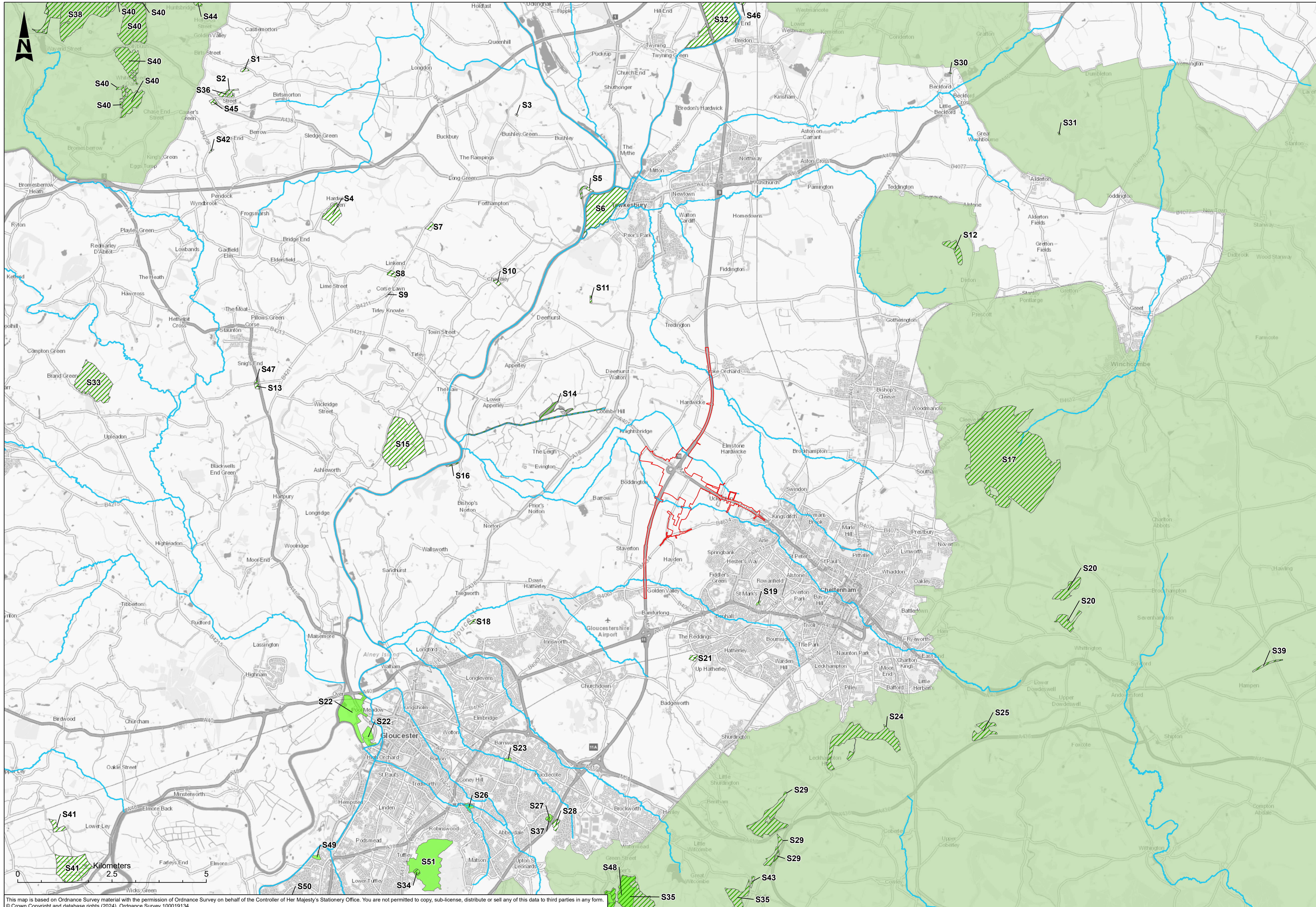
**KEY:**

- SHEET USED AS PART OF THIS DRAWING SERIES.
- EXISTING ORDNANCE SURVEY DATA
- DEVELOPMENT CONSENT ORDER (DCO) BOUNDARY
- SCHEME EXTENT

This map is based on Ordnance Survey material with the permission of Ordnance Survey on behalf of the Controller of Her Majesty's Stationery Office. You are not permitted to copy, sub-license, distribute or sell any of this data to third parties in any form. © Crown Copyright and database rights 2022, Ordnance Survey 100019134.

Description							
Status	Revision	Drawn	Checked	Reviewed	Authorised	Issue Date	
Description							
Status	Revision	Drawn	Checked	Reviewed	Authorised	Issue Date	
Description							
Status	Revision	Drawn	Checked	Reviewed	Authorised	Issue Date	
Description							
Status	Revision	Drawn	Checked	Reviewed	Authorised	Issue Date	
Description							
REVISION 0							
Status	Revision	Drawn	Checked	Reviewed	Authorised	Issue Date	
A1	C01	AC	SS	CDC	BM	17/10/23	
Drawing Suitability						Status	
APPROVED - PUBLISHED						A1	
Project Title							
M5 Junction 10 Improvements Scheme							
Drawing Title							
BIODIVERSITY SITES AND FEATURES PLAN							
KEY PLAN							
Drawing Number							
GCCM5J10		ATK		EBD		ZZ	
				DR LS		00001	
Original Size:	A1	Scale:	AS SHOWN	Project Ref. No.:	5197035	Sheet:	1 of 1
Rev:	C01						





- S1 - Barn Meadow SSSI
- S2 - Merries Farm Meadows SSSI
- S3 - Windmill Tump SSSI
- S4 - Burley Dene Meadows SSSI
- S5 - Old River Severn, Upper Lode SSSI
- S6 - Severn Ham, Tewkesbury SSSI
- S7 - Coombhill Meadows SSSI
- S8 - Poolhay Meadows SSSI
- S9 - Avenue Meadow SSSI
- S10 - Chaceley Meadow SSSI
- S11 - Turvey's Piece SSSI
- S12 - Dixon Wood SSSI
- S13 - Oridge Street Meadows SSSI
- S14 - Coombe Hill Canal SSSI
- S15 - Ashleworth Ham SSSI
- S16 - Wainode Cliff SSSI
- S17 - Cleeve Common SSSI
- S18 - Innsworth Meadow SSSI
- S19 - Griffiths Avenue LNR
- S20 - Puckham Woods SSSI
- S21 - Badgeworth SSSI
- S22 - Alney Island
- S23 - Barnwood Arboretum LNR
- S24 - Leckhampton Hill and Charlton Kings Common SSSI
- S25 - Lineover Wood SSSI
- S26 - Sainbridge Balancing Pond LNR
- S27 - Hucclecote Meadows LNR
- S28 - Hucclecote Meadows SSSI
- S29 - Crickley Hill and Barrow Wake SSSI
- S30 - Beckford Gravel Pit SSSI
- S31 - Alderton Hill Quarry SSSI
- S32 - Upham Meadow and Summer Leasow SSSI
- S33 - Collinpark Wood SSSI
- S34 - Robin's Wood Hill Quarry SSSI
- S35 - Cotswold Commons and Beechwoods SSSI
- S36 - Rye Street Meadows SSSI
- S37 - Hucclecote Meadows SSSI
- S38 - Eastnor Park SSSI
- S39 - Hampen Railway Cutting SSSI
- S40 - The Malvern Hills SSSI
- S41 - Walmore Common SSSI
- S42 - Tudor Cottage Meadow SSSI
- S43 - Knap House Quarry, Birdlip SSSI
- S44 - Staring Bank SSSI
- S45 - Duke of York Meadow SSSI
- S46 - Rectory Farm Meadows SSSI
- S47 - Oridge Street Meadows SSSI
- S48 - Coopers Hill, Gloucester LNR
- S49 - Green Farm Orchard LNR
- S50 - Quedgeley Arboretum LNR
- S51 - Robinswood Hill LNR

**SAFETY, HEALTH AND ENVIRONMENTAL INFORMATION**

In addition to the hazards/risks normally associated with the types of work detailed on this drawing, note the following significant residual risks (Reference shall also be made in the design hazard log)

Construction	None
Maintenance / Cleaning	None
Use	None
Decommission / Demolition	None

This map is based on Ordnance Survey material with the permission of Ordnance Survey on behalf of the Controller of Her Majesty's Stationery Office. You are not permitted to copy, sub-license, distribute or sell any of this data to third parties in any form. © Crown Copyright and database rights (2024), Ordnance Survey 100019134.

LEGEND							
	ORDER LIMITS						
	WFD WATERCOURSES						
	SITES OF SPECIAL SCIENTIFIC INTEREST (SSSI)						
	LOCAL NATURE RESERVES						
	NATIONAL LANDSCAPE						

Description		Drawing Suitability		Status		Project Title	
Status	Revision	Drawn	Checked	Reviewed	Authorised	Issue Date	<b>PUBLISHED</b>
Description		Drawing Suitability		Status		Project Title	
Status	Revision	Drawn	Checked	Reviewed	Authorised	Issue Date	<b>ATKINS</b>
Description		Drawing Suitability		Status		Project Title	
Status	Revision	Drawn	Checked	Reviewed	Authorised	Issue Date	9th Floor, Block 5 Shire Hall Bearland Gloucester GL1 2TH
Description		Drawing Suitability		Status		Project Title	
Status	Revision	Drawn	Checked	Reviewed	Authorised	Issue Date	Member of the SNC-Lavalin Group
Description		Drawing Suitability		Status		Project Title	
Status	Revision	Drawn	Checked	Reviewed	Authorised	Issue Date	Tel: 08000 514 514 www.atkinsglobal.com
Description		Drawing Suitability		Status		Project Title	
Status	Revision	Drawn	Checked	Reviewed	Authorised	Issue Date	Copyright © Atkins Limited (2024)
Description		Drawing Suitability		Status		Project Title	
Status	Revision	Drawn	Checked	Reviewed	Authorised	Issue Date	Client
Description		Drawing Suitability		Status		Project Title	
Status	Revision	Drawn	Checked	Reviewed	Authorised	Issue Date	
Description		Drawing Suitability		Status		Project Title	
Status	Revision	Drawn	Checked	Reviewed	Authorised	Issue Date	Drawing Title
Description		Drawing Suitability		Status		Project Title	
Status	Revision	Drawn	Checked	Reviewed	Authorised	Issue Date	<b>BIODIVERSITY SITES AND FEATURES PLAN</b>
Description		Drawing Suitability		Status		Project Title	
Status	Revision	Drawn	Checked	Reviewed	Authorised	Issue Date	LARGE SCALE PLAN SHOWING THE SITES NEAREST TO THE SCHEME DESIGNATED FOR BIODIVERSITY OR LANDSCAPE VALUE
Description		Drawing Suitability		Status		Project Title	
Status	Revision	Drawn	Checked	Reviewed	Authorised	Issue Date	Drawing Number
Description		Drawing Suitability		Status		Project Title	
Status	Revision	Drawn	Checked	Reviewed	Authorised	Issue Date	Project   Originator   Volume
Description		Drawing Suitability		Status		Project Title	
Status	Revision	Drawn	Checked	Reviewed	Authorised	Issue Date	GCCM5J10 - ATK - EBD ZZ - DR - LS - 000018
Description		Drawing Suitability		Status		Project Title	
Status	Revision	Drawn	Checked	Reviewed	Authorised	Issue Date	Original Location   Scale   Project Ref.   Sheet   Number   Rev.
Description		Drawing Suitability		Status		Project Title	
Status	Revision	Drawn	Checked	Reviewed	Authorised	Issue Date	A1   1:50,000   5214106   1 of 1   C02





FOR CONTINUATION REFER TO SHEET 1

22.5m

FOR CONTINUATION REFER TO INSET 1A

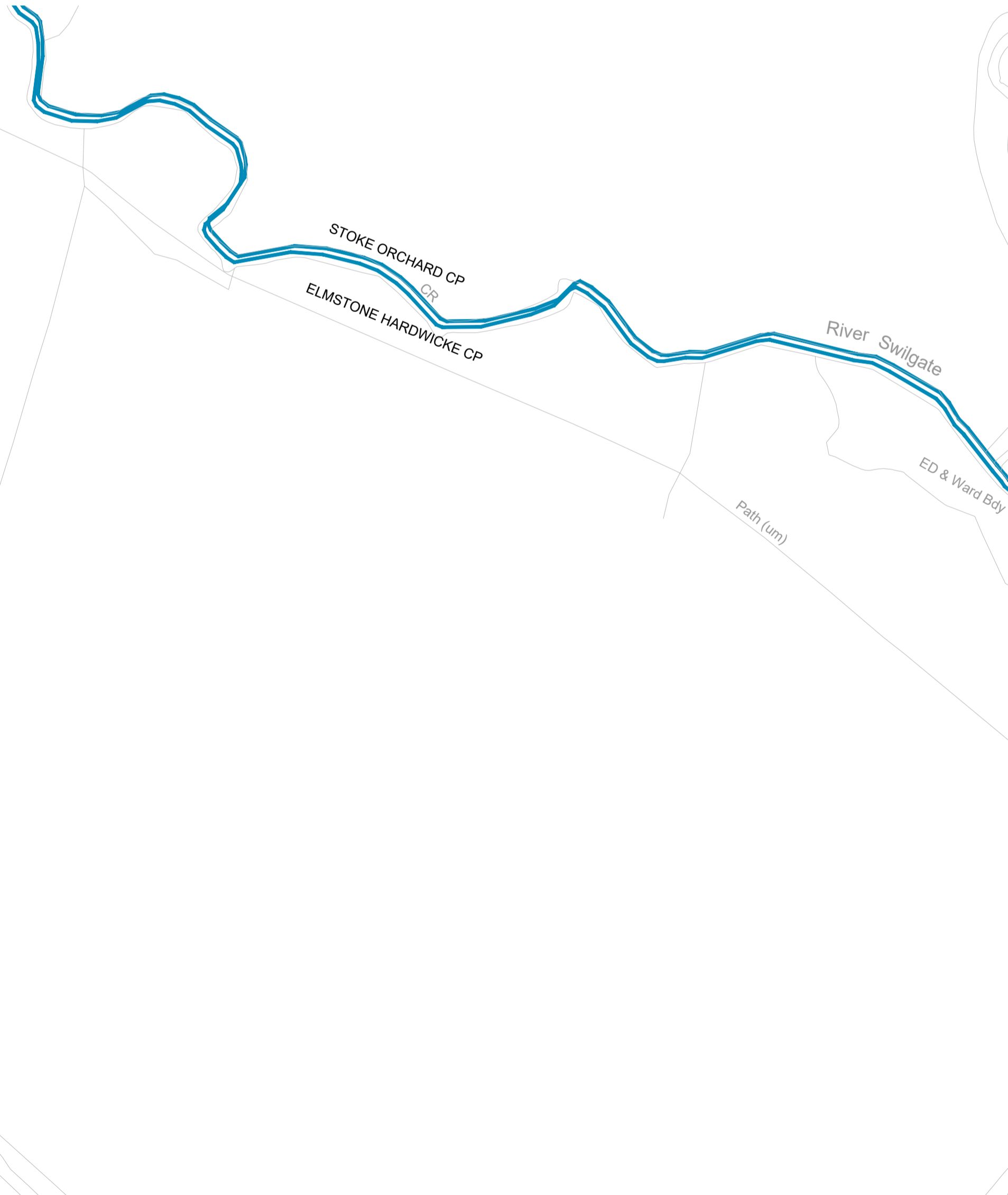
TOWARDS M5  
JUNCTION 9

TOWARDS M5  
JUNCTION 10

FOR CONTINUATION REFER TO SHEET 2

M5 MAINLINE

M5 MAINLINE

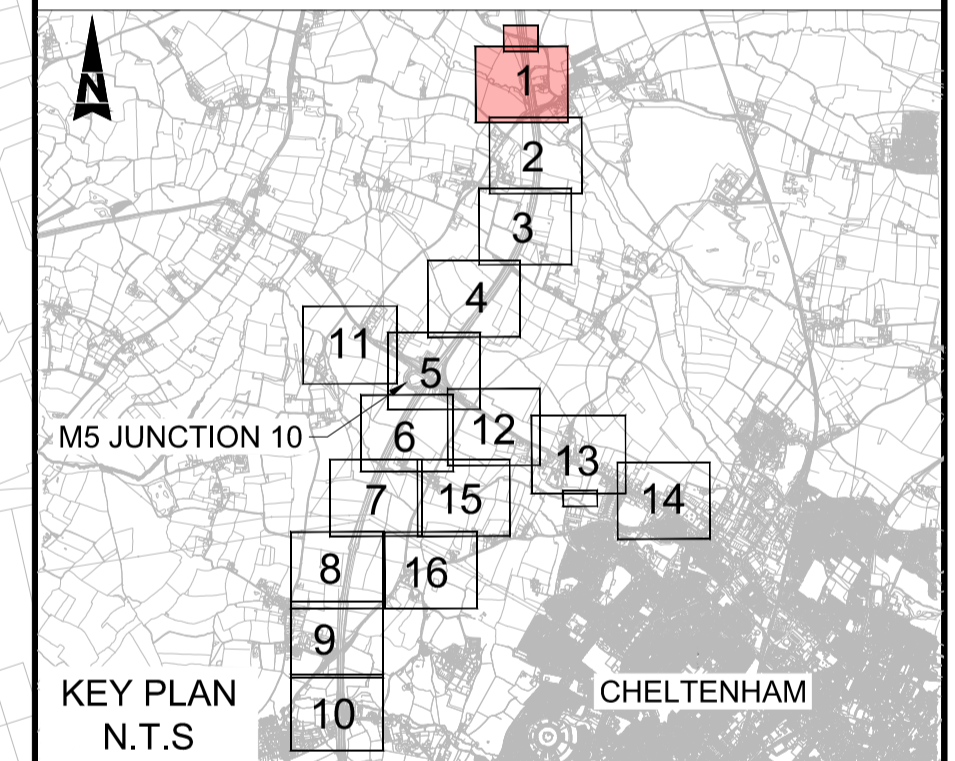


NOTES:

1. ALL DIMENSIONS ARE IN METRES UNLESS OTHERWISE STATED.
2. THE WORKS PLANS SHOULD BE READ IN CONJUNCTION WITH THE DEVELOPMENT CONSENT ORDER.
3. THERE ARE NO SITES WITHIN THE MAP AREA THAT ARE DESIGNATED AS SACS, SPAS, SSSIS, RAMSAR SITES, NNRS, AND LNRS.

KEY

- DEVELOPMENT CONSENT ORDER (DCO) BOUNDARY
- WFD SURFACE WATERBODIES
- 1 IN 1000 YEARS BASELINE FLOODPLAIN
- 1 IN 100 YEARS BASELINE FLOODPLAIN



Description						
Status	Revision	Drawn	Checked	Reviewed	Authorised	Issue Date

Description						
Status	Revision	Drawn	Checked	Reviewed	Authorised	Issue Date

Description						
Status	Revision	Drawn	Checked	Reviewed	Authorised	Issue Date

Description						
Status	Revision	Drawn	Checked	Reviewed	Authorised	Issue Date

Description						
REVISION 0						
Status	Revision	Drawn	Checked	Reviewed	Authorised	Issue Date
A1	C01	AC	SS	CDC	BM	17/10/23

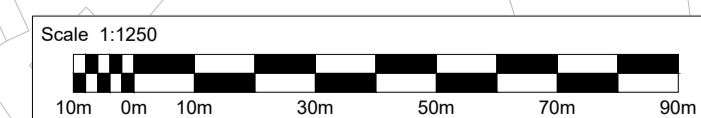
Drawing Suitability	Status
APPROVED - PUBLISHED	A1

Project Title
M5 Junction 10 Improvements Scheme

Drawing Title
BIODIVERSITY SITES AND FEATURES PLAN
SHEET 1 OF 16

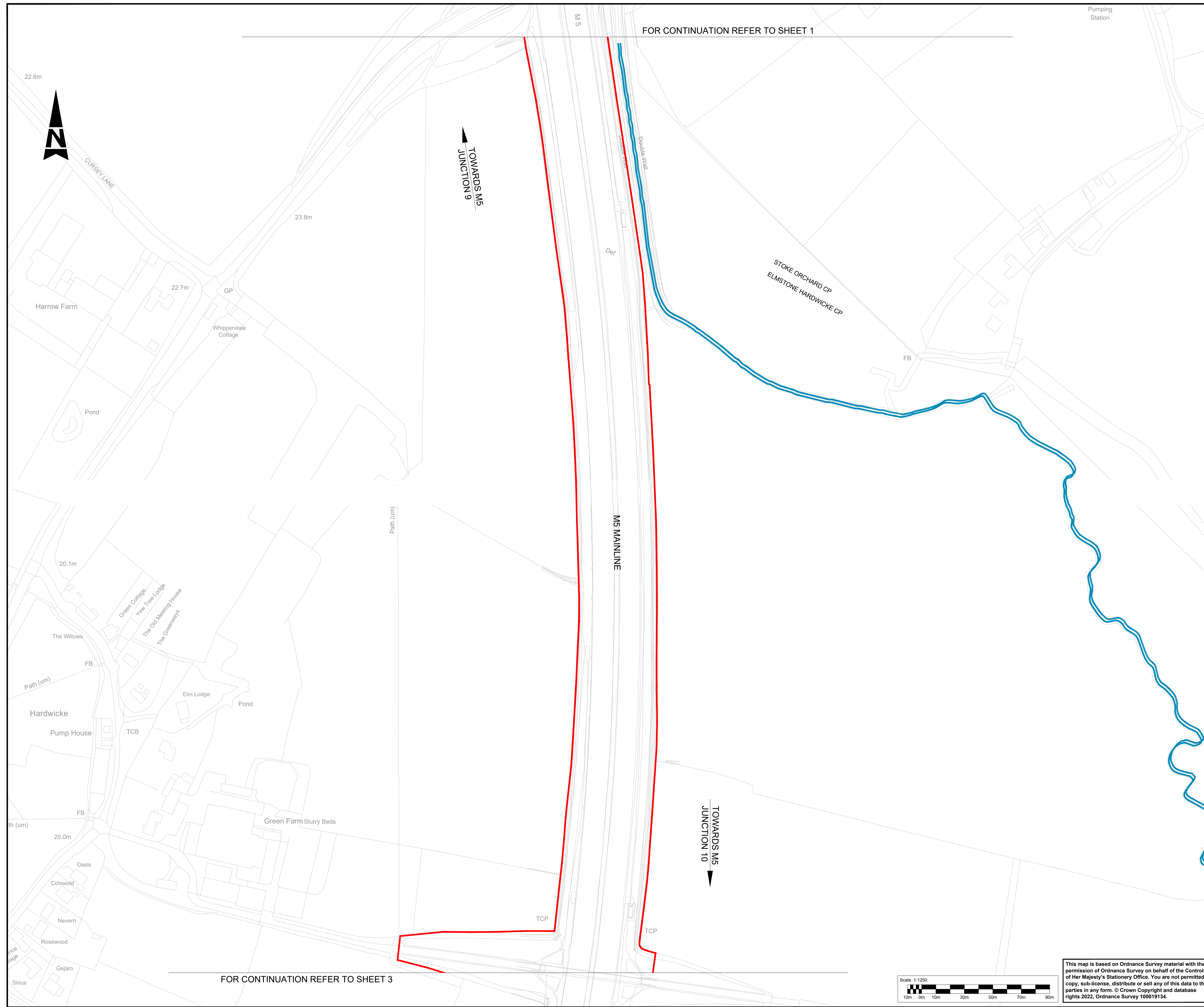
Drawing Number
GCCM5J10 ATK EBD ZZ DR LS 000002

Original Size	Scale	AS SHOWN	Project Ref. No.	5197035	Sheet	1 of 16	Rev.	C01
---------------	-------	----------	------------------	---------	-------	---------	------	-----



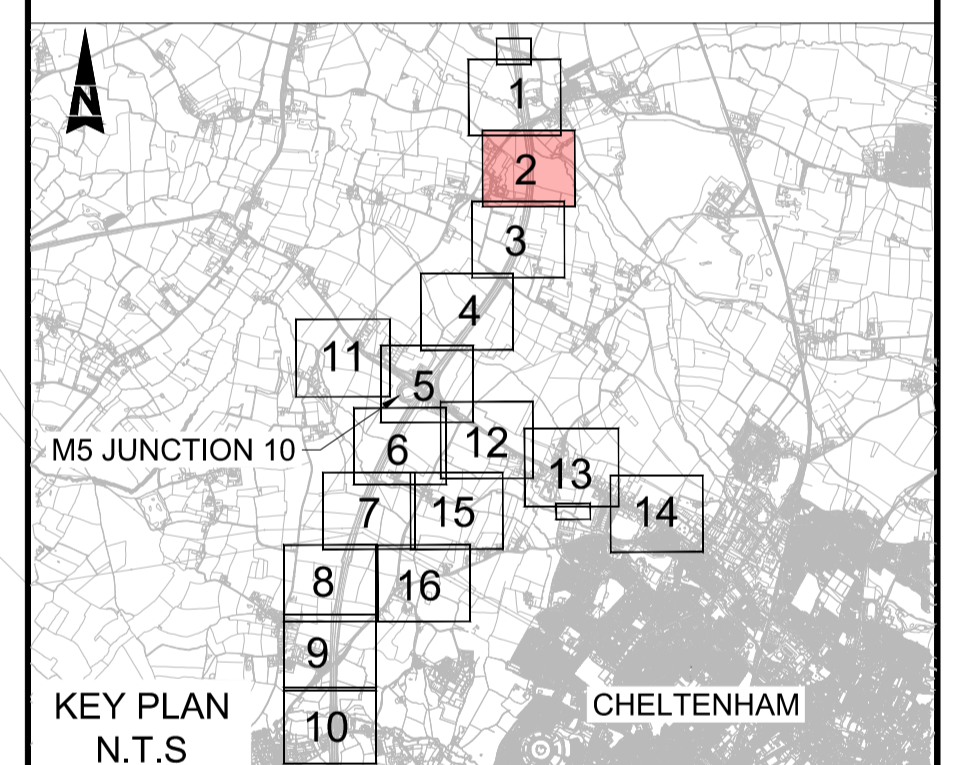
This map is based on Ordnance Survey material with the permission of Ordnance Survey on behalf of the Controller of Her Majesty's Stationery Office. You are not permitted to copy, sub-license, distribute or sell any of this data to third parties in any form. © Crown Copyright and database rights 2022, Ordnance Survey 100019134.





- NOTES:**
- ALL DIMENSIONS ARE IN METRES UNLESS OTHERWISE STATED.
  - THE WORKS PLANS SHOULD BE READ IN CONJUNCTION WITH THE DEVELOPMENT CONSENT ORDER.
  - THERE ARE NO SITES WITHIN THE MAP AREA THAT ARE DESIGNATED AS SACS, SPAS, SSSIS, RAMSAR SITES, NNRS, AND LNRS.

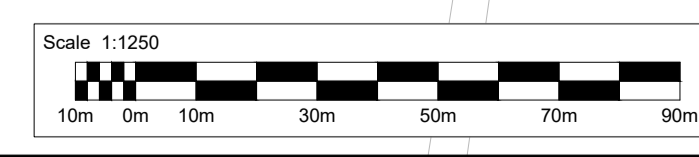
- KEY**
- DEVELOPMENT CONSENT ORDER (DCO) BOUNDARY
  - WFD SURFACE WATERBODIES
  - 1 IN 1000 YEARS BASELINE FLOODPLAIN
  - 1 IN 100 YEARS BASELINE FLOODPLAIN



Description						
Status	Revision	Drawn	Checked	Reviewed	Authorised	Issue Date
Description						
Description						
Description						
Description						
A1	C01	AC	SS	CDC	BM	17/10/23
Drawing Suitability						Status
APPROVED - PUBLISHED						A1

Project Title						
M5 Junction 10 Improvements Scheme						
Drawing Title						
BIODIVERSITY SITES AND FEATURES PLAN						
SHEET 2 OF 16						
Drawing Number						
GCCM5J10	ATK	EBD				
ZZ	DR	LS	000003			
Original Size: A1	Scale: AS SHOWN	Project Ref. No: 5197035	Sheet: 2 of 16	Rev: C01		

This map is based on Ordnance Survey material with the permission of Ordnance Survey on behalf of the Controller of Her Majesty's Stationery Office. You are not permitted to copy, sub-license, distribute or sell any of this data to third parties in any form. © Crown Copyright and database rights 2022, Ordnance Survey 100019134.





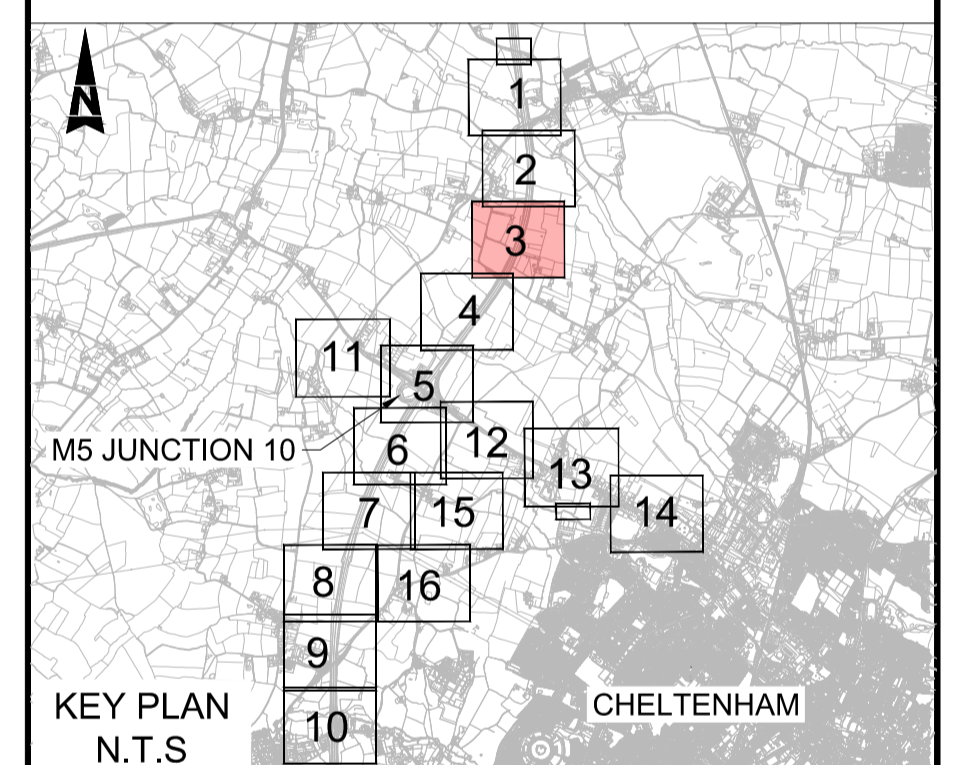


FOR CONTINUATION REFER TO SHEET 2

FOR CONTINUATION REFER TO SHEET 4

- NOTES:**
1. ALL DIMENSIONS ARE IN METRES UNLESS OTHERWISE STATED.
  2. THE WORKS PLANS SHOULD BE READ IN CONJUNCTION WITH THE DEVELOPMENT CONSENT ORDER.
  3. THERE ARE NO SITES WITHIN THE MAP AREA THAT ARE DESIGNATED AS SACS, SPAS, SSSIS, RAMSAR SITES, NNRS, AND LNRS.

- KEY**
- DEVELOPMENT CONSENT ORDER (DCO) BOUNDARY
  - WFD SURFACE WATERBODIES
  - 1 IN 1000 YEARS BASELINE FLOODPLAIN
  - 1 IN 100 YEARS BASELINE FLOODPLAIN



Description						
Status	Revision	Drawn	Checked	Reviewed	Authorised	Issue Date
Description						
Status	Revision	Drawn	Checked	Reviewed	Authorised	Issue Date
Description						
Status	Revision	Drawn	Checked	Reviewed	Authorised	Issue Date
Description						
Status	Revision	Drawn	Checked	Reviewed	Authorised	Issue Date
Description						
Status	Revision	Drawn	Checked	Reviewed	Authorised	Issue Date
A1	C01	AC	SS	CDC	BM	17/10/23
Drawing Suitability						Status
APPROVED - PUBLISHED						A1

Project Title  
**M5 Junction 10 Improvements Scheme**

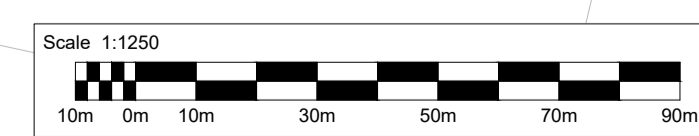
Drawing Title  
**BIODIVERSITY SITES AND FEATURES PLAN**

**SHEET 3 OF 16**

Drawing Number

GCCM5J10	ATK	EBD
ZZ	DR	LS 000004

Original Size: **A1** Scale: AS SHOWN Project Ref. No: 5197035 Sheet: 3 of 16 Rev: **C01**



This map is based on Ordnance Survey material with the permission of Ordnance Survey on behalf of the Controller of Her Majesty's Stationery Office. You are not permitted to copy, sub-license, distribute or sell any of this data to third parties in any form. © Crown Copyright and database rights 2022, Ordnance Survey 100019134.







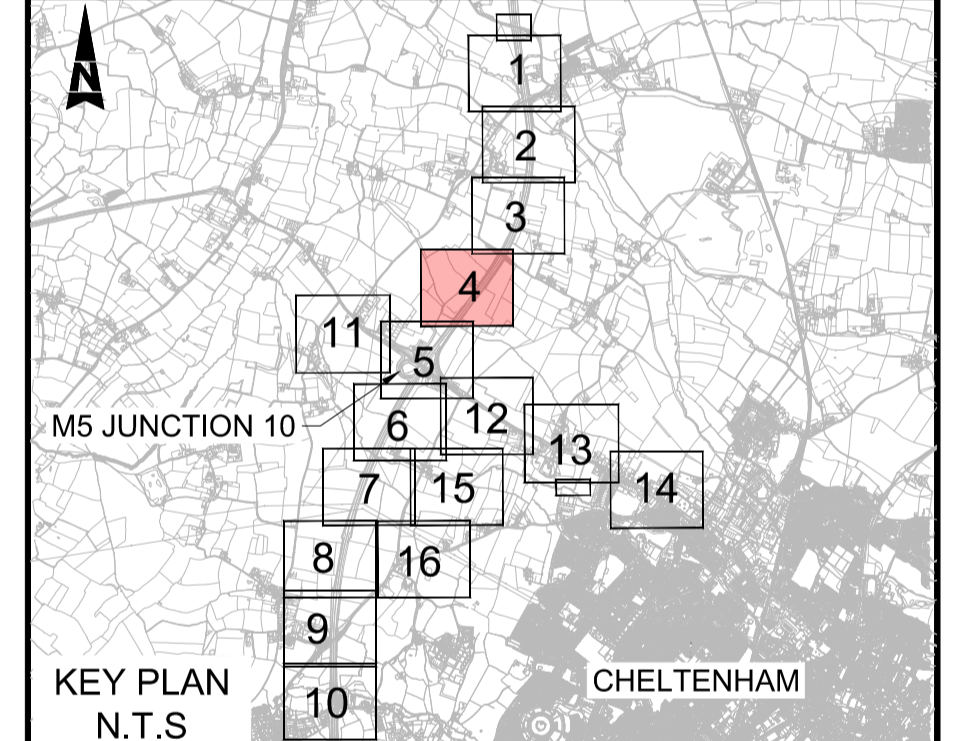
FOR CONTINUATION REFER TO SHEET 3

**NOTES:**

1. ALL DIMENSIONS ARE IN METRES UNLESS OTHERWISE STATED.
2. THE WORKS PLANS SHOULD BE READ IN CONJUNCTION WITH THE DEVELOPMENT CONSENT ORDER.
3. THERE ARE NO SITES WITHIN THE MAP AREA THAT ARE DESIGNATED AS SACS, SPAS, SSSIS, RAMSAR SITES, NNRS, AND LNRS.

**KEY**

-  DEVELOPMENT CONSENT ORDER (DCO) BOUNDARY
-  WFD SURFACE WATERBODIES
-  1 IN 1000 YEARS BASELINE FLOODPLAIN
-  1 IN 100 YEARS BASELINE FLOODPLAIN



TOWARDS M5  
JUNCTION 9

M5 MAINLINE

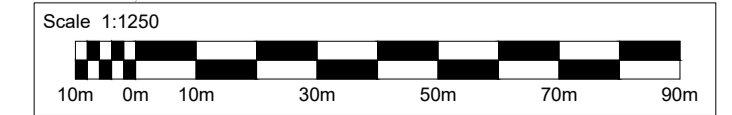
TOWARDS M5  
JUNCTION 10

Barn Farm

M5

M5

FOR CONTINUATION REFER TO SHEET 5



This map is based on Ordnance Survey material with the permission of Ordnance Survey on behalf of the Controller of Her Majesty's Stationery Office. You are not permitted to copy, sub-license, distribute or sell any of this data to third parties in any form. © Crown Copyright and database rights 2022, Ordnance Survey 100019134.

Description						
Status	Revision	Drawn	Checked	Reviewed	Authorised	Issue Date
Description						
Status	Revision	Drawn	Checked	Reviewed	Authorised	Issue Date
Description						
Status	Revision	Drawn	Checked	Reviewed	Authorised	Issue Date
Description						
Status	Revision	Drawn	Checked	Reviewed	Authorised	Issue Date
A1	C01	AC	SS	CDC	BM	17/10/23
Drawing Suitability						Status
<b>APPROVED - PUBLISHED</b>						A1
Project Title						
M5 Junction 10 Improvements Scheme						
Drawing Title						
BIODIVERSITY SITES AND FEATURES PLAN						
SHEET 4 OF 16						
Drawing Number						
GCCM5J10		ATK		EBD		
ZZ				DR LS 000005		
Original Size	A1	Scale	AS SHOWN	Project Ref. No.	5197035	Sheet: 4 of 16
						Rev: C01



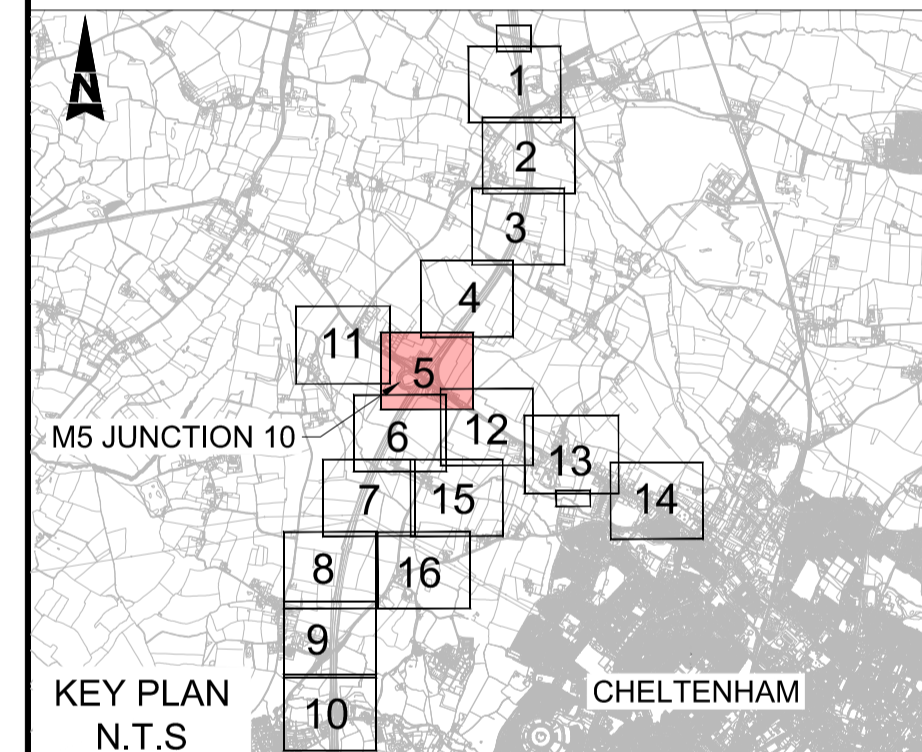


**NOTES:**

- 1. ALL DIMENSIONS ARE IN METRES UNLESS OTHERWISE STATED.
- 2. THE WORKS PLANS SHOULD BE READ IN CONJUNCTION WITH THE DEVELOPMENT CONSENT ORDER.
- 3. THERE ARE NO SITES WITHIN THE MAP AREA THAT ARE DESIGNATED AS SACS, SPAS, SSSIS, RAMSAR SITES, NNRS, AND LNRS.

**KEY**

- DEVELOPMENT CONSENT ORDER (DCO) BOUNDARY
- WFD SURFACE WATERBODIES
- 1 IN 1000 YEARS BASELINE FLOODPLAIN
- 1 IN 100 YEARS BASELINE FLOODPLAIN



Description

Status	Revision	Drawn	Checked	Reviewed	Authorised	Issue Date

Description

Status	Revision	Drawn	Checked	Reviewed	Authorised	Issue Date

Description

Status	Revision	Drawn	Checked	Reviewed	Authorised	Issue Date

Description

Status	Revision	Drawn	Checked	Reviewed	Authorised	Issue Date

Description

Status	Revision	Drawn	Checked	Reviewed	Authorised	Issue Date
A1	CO1	AC	SS	CDC	BM	17/10/23

Drawing Suitability: **APPROVED - PUBLISHED** Status: **A1**

Project Title: **M5 Junction 10 Improvements Scheme**

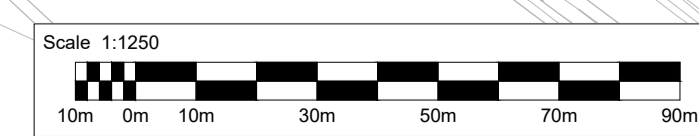
Drawing Title: **BIODIVERSITY SITES AND FEATURES PLAN**

**SHEET 5 OF 16**

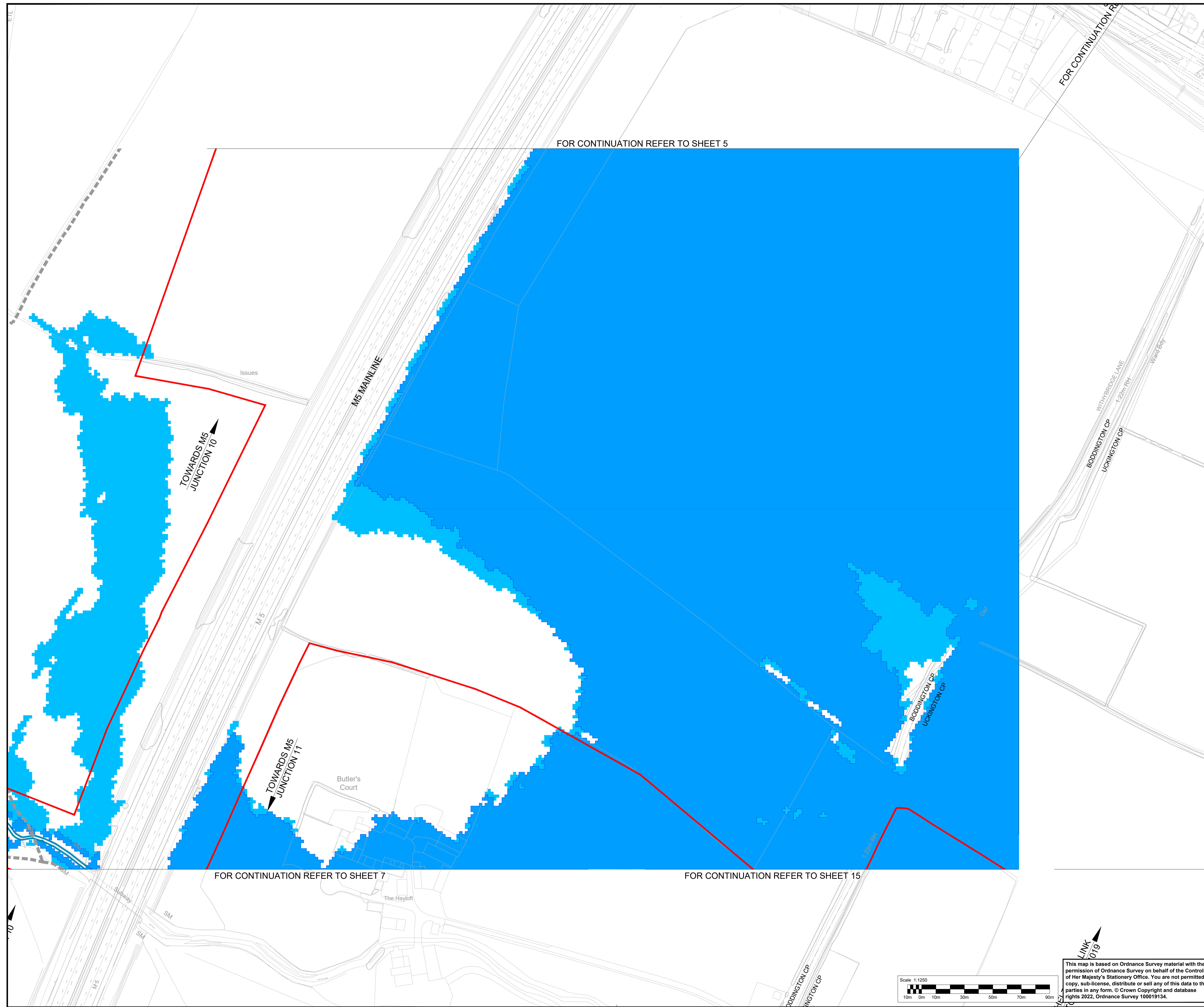
Drawing Number: **GCCM5J10 ATK EBD ZZ DR LS 000006**

Original Size: **A1** Scale: **AS SHOWN** Project Ref. No.: **5197035** Sheet: **5 of 16** Rev: **C01**

This map is based on Ordnance Survey material with the permission of Ordnance Survey on behalf of the Controller of Her Majesty's Stationery Office. You are not permitted to copy, sub-license, distribute or sell any of this data to third parties in any form. © Crown Copyright and database rights 2022, Ordnance Survey 100019134.

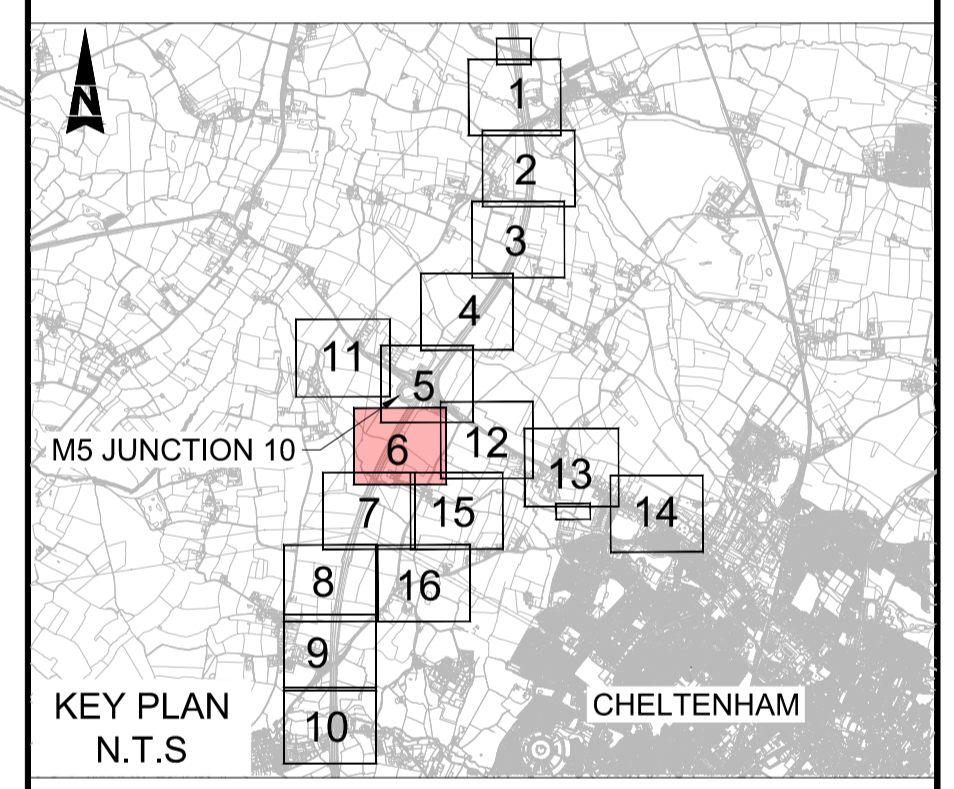






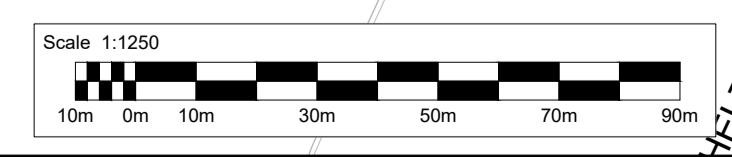
- NOTES:**
1. ALL DIMENSIONS ARE IN METRES UNLESS OTHERWISE STATED.
  2. THE WORKS PLANS SHOULD BE READ IN CONJUNCTION WITH THE DEVELOPMENT CONSENT ORDER.
  3. THERE ARE NO SITES WITHIN THE MAP AREA THAT ARE DESIGNATED AS SACS, SPAS, SSSIS, RAMSAR SITES, NNRS, AND LNRS.

- KEY**
- DEVELOPMENT CONSENT ORDER (DCO) BOUNDARY
  - WFD SURFACE WATERBODIES
  - 1 IN 1000 YEARS BASELINE FLOODPLAIN
  - 1 IN 100 YEARS BASELINE FLOODPLAIN



Description						
Status	Revision	Drawn	Checked	Reviewed	Authorised	Issue Date
Description						
Status	Revision	Drawn	Checked	Reviewed	Authorised	Issue Date
Description						
Status	Revision	Drawn	Checked	Reviewed	Authorised	Issue Date
Description						
Status	Revision	Drawn	Checked	Reviewed	Authorised	Issue Date
A1	C01	AC	SS	CDC	BM	17/10/23
Drawing Suitability						Status
APPROVED - PUBLISHED						A1

Project Title			
M5 Junction 10 Improvements Scheme			
Drawing Title			
BIODIVERSITY SITES AND FEATURES PLAN			
SHEET 6 OF 16			
Drawing Number			
GCCM5J10	ATK	EBD	
ZZ	DR	LS	000007
Original Size: A1	Scale: AS SHOWN	Project Ref. No: 5197035	Sheet: 6 of 16 Rev: C01



This map is based on Ordnance Survey material with the permission of Ordnance Survey on behalf of the Controller of Her Majesty's Stationery Office. You are not permitted to copy, sub-license, distribute or sell any of this data to third parties in any form. © Crown Copyright and database rights 2022, Ordnance Survey 100019134.





ETL

Boddington Coppice

TOWARDS M5 JUNCTION 10

79000

M5 MAINLINE

TOWARDS M5 JUNCTION 11

79500

FOR CONTINUATION REFER TO SHEET 6

FOR CONTINUATION REFER TO SHEET 8

FOR CONTINUATION REFER TO SHEET 16

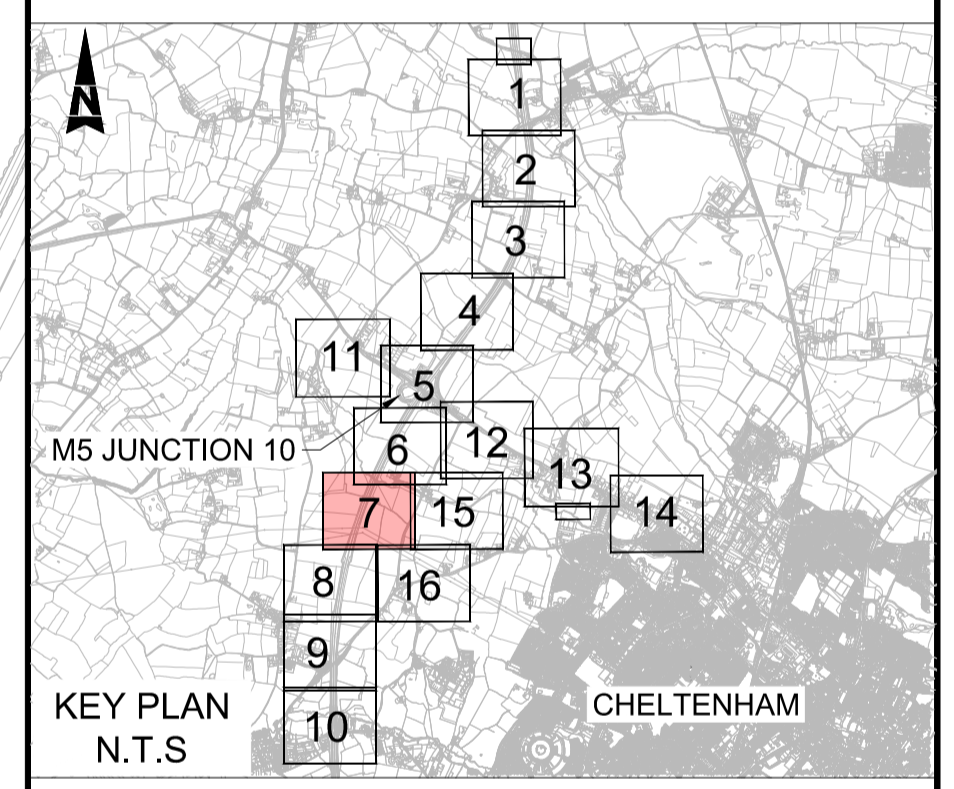
NOTES:

- ALL DIMENSIONS ARE IN METRES UNLESS OTHERWISE STATED.
- THE WORKS PLANS SHOULD BE READ IN CONJUNCTION WITH THE DEVELOPMENT CONSENT ORDER.
- THERE ARE NO SITES WITHIN THE MAP AREA THAT ARE DESIGNATED AS SACS, SPAS, SSSIS, RAMSAR SITES, NNRS, AND LNRS.

KEY

- DEVELOPMENT CONSENT ORDER (DCO) BOUNDARY
- WFD SURFACE WATERBODIES
- 1 IN 1000 YEARS BASELINE FLOODPLAIN
- 1 IN 100 YEARS BASELINE FLOODPLAIN

FOR CONTINUATION REFER TO SHEET 15



Description						
Status	Revision	Drawn	Checked	Reviewed	Authorised	Issue Date
Description						
Status	Revision	Drawn	Checked	Reviewed	Authorised	Issue Date
Description						
Status	Revision	Drawn	Checked	Reviewed	Authorised	Issue Date
Description						
Status	Revision	Drawn	Checked	Reviewed	Authorised	Issue Date
Description						
Status	Revision	Drawn	Checked	Reviewed	Authorised	Issue Date
A1	C01	AC	SS	CDC	BM	17/10/23
Drawing Suitability						Status
APPROVED - PUBLISHED						A1

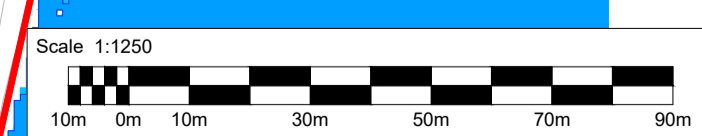
Project Title  
**M5 Junction 10 Improvements Scheme**

Drawing Title  
**BIODIVERSITY SITES AND FEATURES PLAN**

**SHEET 7 OF 16**

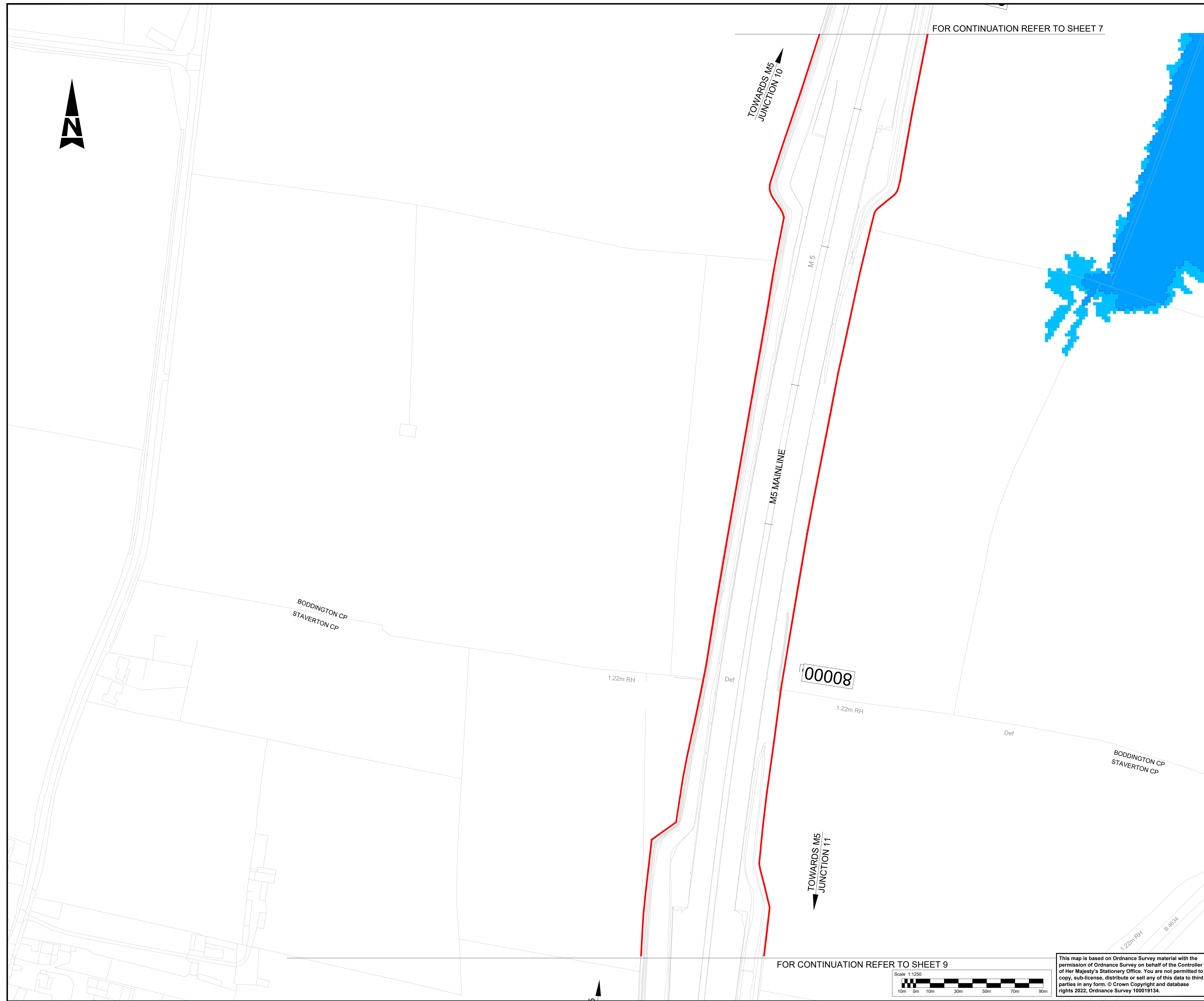
Drawing Number  
GCCM5J10    ATK    EBD  
ZZ    DR    LS    000008

Original Size: A1    Scale: AS SHOWN    Project Ref. No.: 5197035    Sheet: 7 of 16    Rev: C01



This map is based on Ordnance Survey material with the permission of Ordnance Survey on behalf of the Controller of Her Majesty's Stationery Office. You are not permitted to copy, sub-license, distribute or sell any of this data to third parties in any form. © Crown Copyright and database rights 2022, Ordnance Survey 100019134.





FOR CONTINUATION REFER TO SHEET 7

TOWARDS M5 JUNCTION 10

M5 MAINLINE

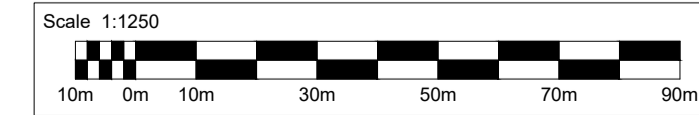
00008

TOWARDS M5 JUNCTION 11

BODDINGTON CP  
STAVERTON CP

BODDINGTON CP  
STAVERTON CP

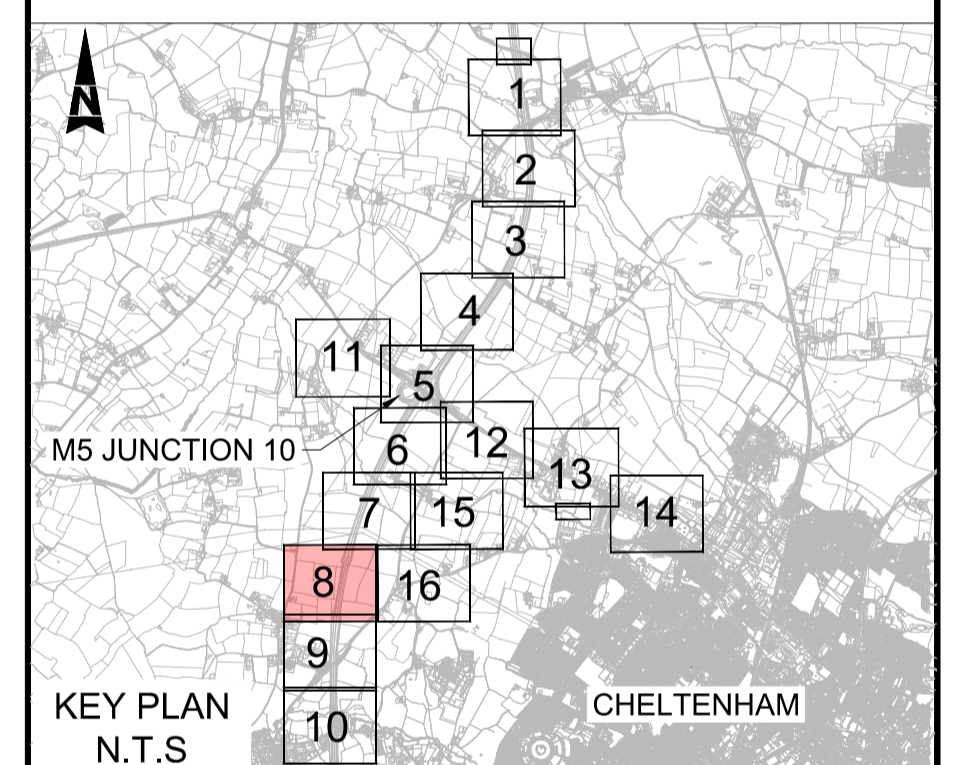
FOR CONTINUATION REFER TO SHEET 9



This map is based on Ordnance Survey material with the permission of Ordnance Survey on behalf of the Controller of Her Majesty's Stationery Office. You are not permitted to copy, sub-license, distribute or sell any of this data to third parties in any form. © Crown Copyright and database rights 2022, Ordnance Survey 100019134.

- NOTES:**
1. ALL DIMENSIONS ARE IN METRES UNLESS OTHERWISE STATED.
  2. THE WORKS PLANS SHOULD BE READ IN CONJUNCTION WITH THE DEVELOPMENT CONSENT ORDER.
  3. THERE ARE NO SITES WITHIN THE MAP AREA THAT ARE DESIGNATED AS SACS, SPAS, SSSIS, RAMSAR SITES, NNRS, AND LNRS.

- KEY**
- DEVELOPMENT CONSENT ORDER (DCO) BOUNDARY
  - WFD SURFACE WATERBODIES
  - 1 IN 1000 YEARS BASELINE FLOODPLAIN
  - 1 IN 100 YEARS BASELINE FLOODPLAIN



Description						
Status	Revision	Drawn	Checked	Reviewed	Authorised	Issue Date
Description						
Status	Revision	Drawn	Checked	Reviewed	Authorised	Issue Date
Description						
Status	Revision	Drawn	Checked	Reviewed	Authorised	Issue Date
Description						
Status	Revision	Drawn	Checked	Reviewed	Authorised	Issue Date
Description						
Status	Revision	Drawn	Checked	Reviewed	Authorised	Issue Date
A1	C01	AC	SS	CDC	BM	17/10/23
Drawing Suitability						Status
APPROVED - PUBLISHED						A1

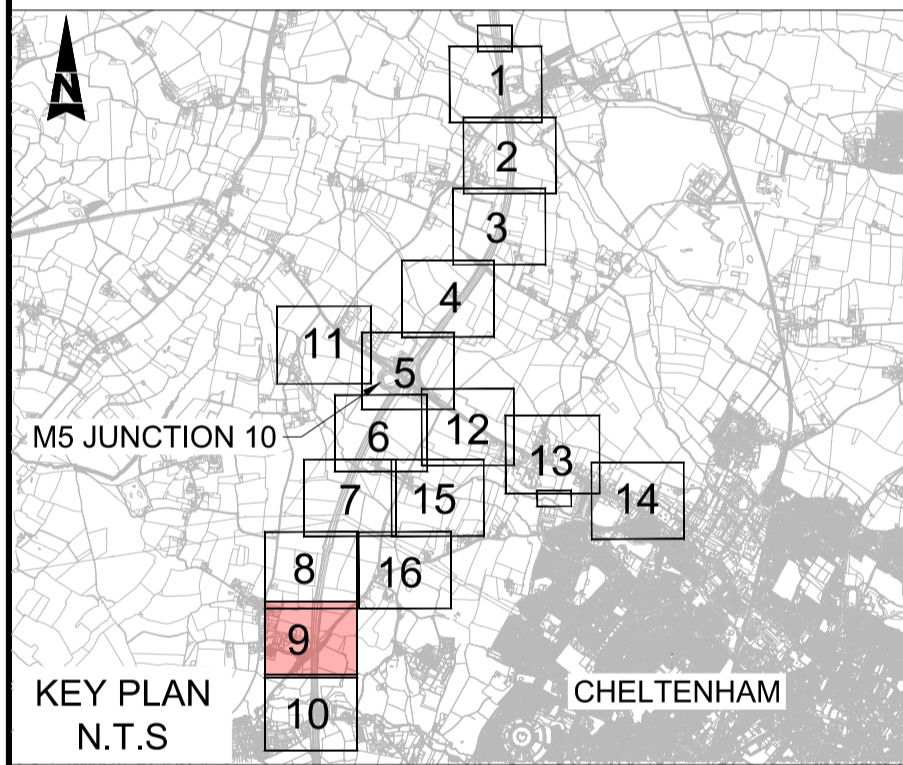
Project Title			
M5 Junction 10 Improvements Scheme			
Drawing Title			
BIODIVERSITY SITES AND FEATURES PLAN			
SHEET 8 OF 16			
Drawing Number			
GCCM5J10	ATK	EBD	
ZZ	DR	LS	000009
Original Size: A1	Scale: AS SHOWN	Project Ref. No.: 5197035	Sheet: 8 of 16 Rev: C01





- NOTES:**
- ALL DIMENSIONS ARE IN METRES UNLESS OTHERWISE STATED.
  - THE WORKS PLANS SHOULD BE READ IN CONJUNCTION WITH THE DEVELOPMENT CONSENT ORDER.
  - THERE ARE NO SITES WITHIN THE MAP AREA THAT ARE DESIGNATED AS SACS, SPAS, SSSIS, RAMSAR SITES, NNRS, AND LNRS.

- KEY**
- DEVELOPMENT CONSENT ORDER (DCO) BOUNDARY
  - WFD SURFACE WATERBODIES
  - 1 IN 1000 YEARS BASELINE FLOODPLAIN
  - 1 IN 100 YEARS BASELINE FLOODPLAIN



Description						
Status	Revision	Drawn	Checked	Reviewed	Authorised	Issue Date
Description						
Status	Revision	Drawn	Checked	Reviewed	Authorised	Issue Date
Description						
Status	Revision	Drawn	Checked	Reviewed	Authorised	Issue Date
Description						
Status	Revision	Drawn	Checked	Reviewed	Authorised	Issue Date
Description						
Status	Revision	Drawn	Checked	Reviewed	Authorised	Issue Date
A1	C01	AC	SS	CDC	BM	17/10/23
Drawing Suitability						Status
APPROVED - PUBLISHED						A1

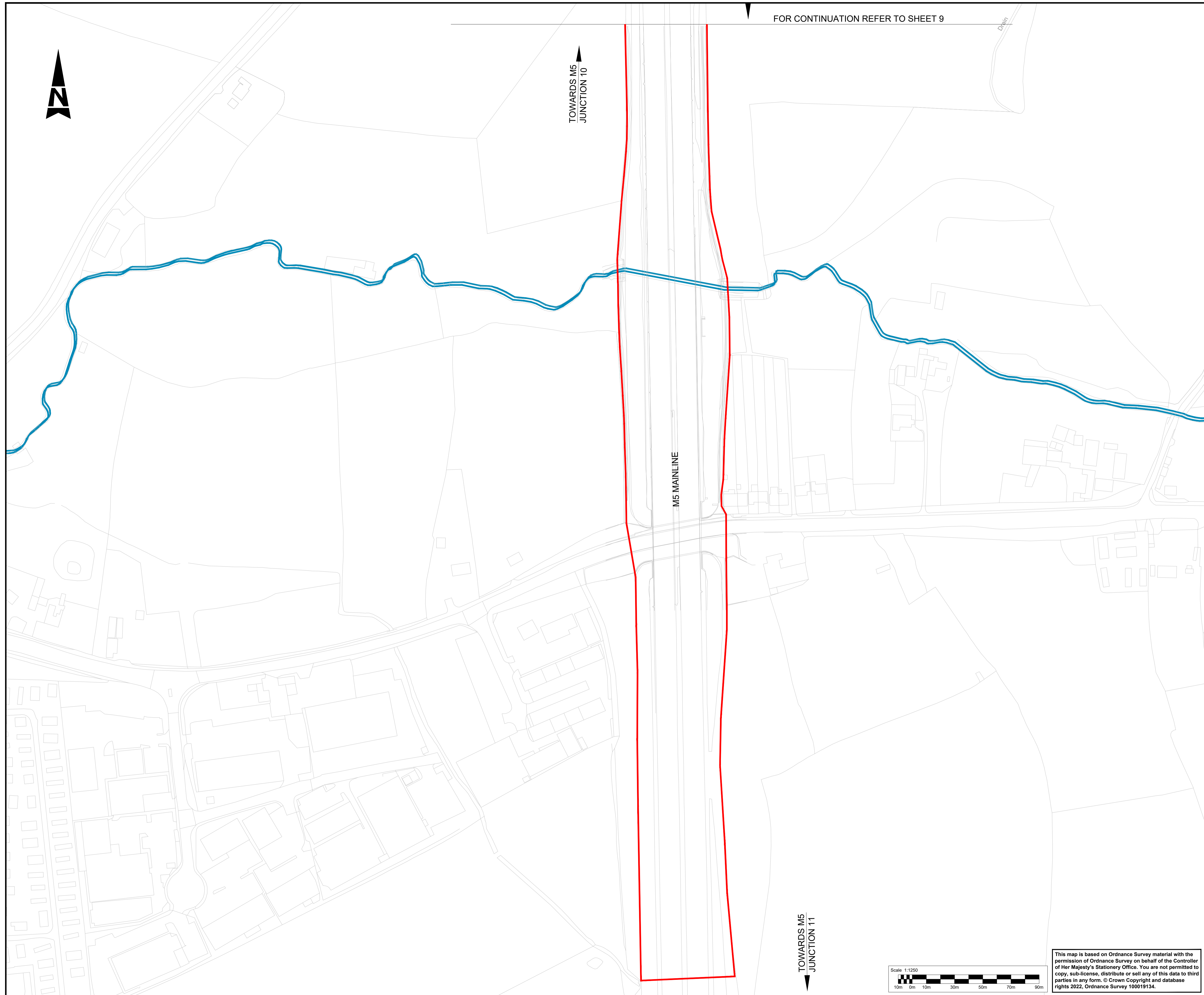
Project Title  
**M5 Junction 10 Improvements Scheme**

Drawing Title  
**BIODIVERSITY SITES AND FEATURES PLAN**

**SHEET 9 OF 16**

Drawing Number	GCCM5J10	ATK	EBD
	ZZ	DR	LS 000010
Original Size	A1	Scale	AS SHOWN
Project Ref. No.	5197035	Sheet	9 of 16
Rev.	C01		



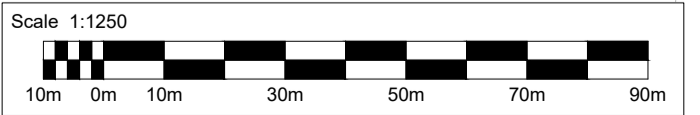


FOR CONTINUATION REFER TO SHEET 9

TOWARDS M5  
JUNCTION 10

M5 MAINLINE

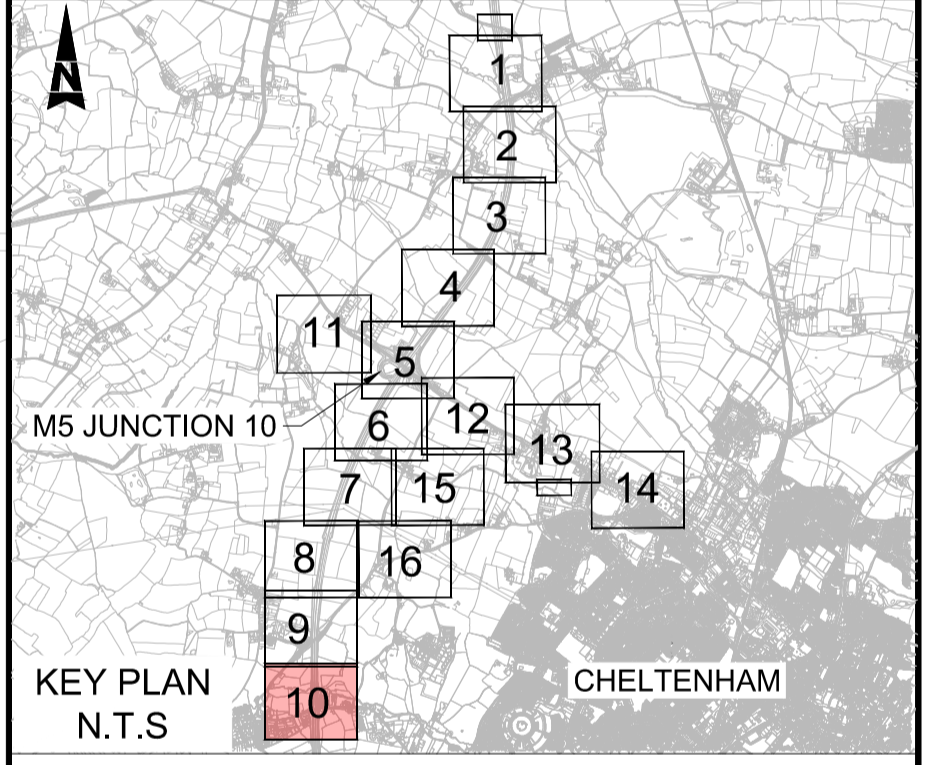
TOWARDS M5  
JUNCTION 11



This map is based on Ordnance Survey material with the permission of Ordnance Survey on behalf of the Controller of Her Majesty's Stationery Office. You are not permitted to copy, sub-license, distribute or sell any of this data to third parties in any form. © Crown Copyright and database rights 2022, Ordnance Survey 100019134.

- NOTES:**
1. ALL DIMENSIONS ARE IN METRES UNLESS OTHERWISE STATED.
  2. THE WORKS PLANS SHOULD BE READ IN CONJUNCTION WITH THE DEVELOPMENT CONSENT ORDER.
  3. THERE ARE NO SITES WITHIN THE MAP AREA THAT ARE DESIGNATED AS SACS, SPAS, SSSIS, RAMSAR SITES, NNRS, AND LNRS.

- KEY**
- DEVELOPMENT CONSENT ORDER (DCO) BOUNDARY
  - WFD SURFACE WATERBODIES
  - 1 IN 1000 YEARS BASELINE FLOODPLAIN
  - 1 IN 100 YEARS BASELINE FLOODPLAIN



Description						
Status	Revision	Drawn	Checked	Reviewed	Authorised	Issue Date
Description						
Description						
Description						
Description						
Description						
A1	C01	AC	SS	CDC	BM	17/10/23
Drawing Suitability						Status
APPROVED - PUBLISHED						A1

Project Title  
**M5 Junction 10 Improvements Scheme**

Drawing Title  
**BIODIVERSITY SITES AND FEATURES PLAN**

**SHEET 10 OF 16**

Drawing Number  
GCCM5J10    ATK    EBD  
ZZ            DR    LS    000011

Original Size: A1    Scale: AS SHOWN    Project Ref. No.: 5197035    Sheet: 10 of 16    Rev: C01

# AtkinsRéalis

5th Floor, Block 5  
Shire Hall  
Bearland  
Gloucester  
GL1 2TH