

M5 Junction 10 Improvements Scheme

Classification of Roads and Traffic Regulations Plans - Part 2 TR010063 - APP 2.8

Regulation 5 (2) (o)

Planning Act 2008

Infrastructure Planning (Applications: Prescribed Forms and Procedure) Regulations 2009

Volume 2

December 2023



Gloucestershire
COUNTY COUNCIL

THIS PAGE IS LEFT INTENTIONALLY BLANK

**Infrastructure Planning
Planning Act 2008**

**The Infrastructure Planning
(Applications: Prescribed Forms and
Procedure) Regulations 2009**

**M5 Junction 10 Improvements Scheme
Development Consent Order 202[X]**

**Classification of Roads and Traffic
Regulations Plans - Part 2**

Regulation Number:	Regulation 5 (2) (o)
Planning Inspectorate Scheme Reference	TR010063
Application Document Reference	TR010063 – APP 2.8
Author:	M5 Junction 10 Improvements Scheme Project Team

Version	Date	Status of Version
Rev 0	December 2023	DCO Application

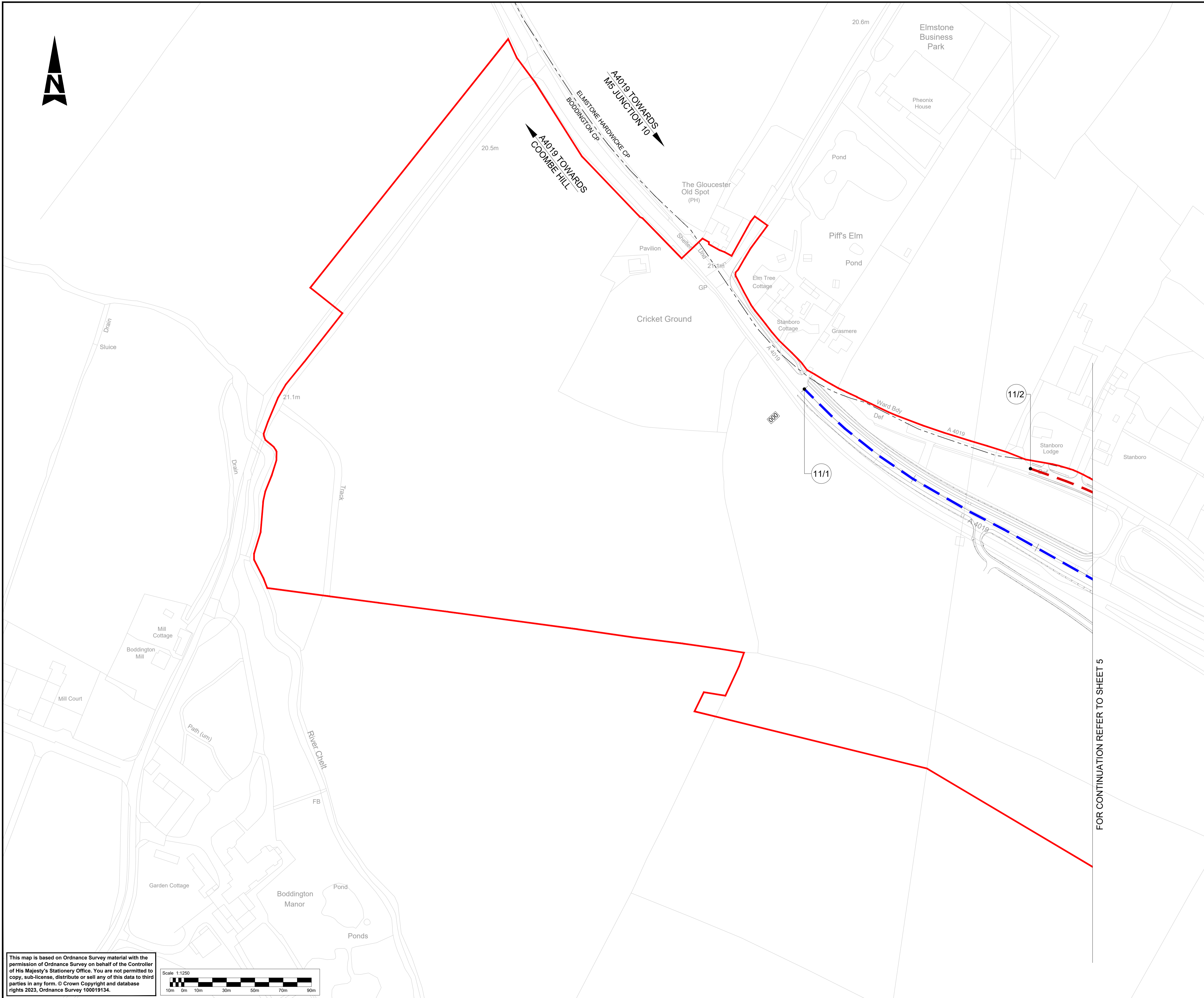
1. Schedule of Plans included in the application

1.1. List of drawings in Part 1

Document title	Document number	Version
Classification of Roads Plans Regulation 5(2)(o) Key Plan	TR010063 – APP 2.8	C01
Classification of Roads Plans Regulation 5(2)(o) Sheet 1 of 16	TR010063 – APP 2.8	C01
Classification of Roads Plans Regulation 5(2)(o) Sheet 2 of 16	TR010063 – APP 2.8	C01
Classification of Roads Plans Regulation 5(2)(o) Sheet 3 of 16	TR010063 – APP 2.8	C01
Classification of Roads Plans Regulation 5(2)(o) Sheet 4 of 16	TR010063 – APP 2.8	C01
Classification of Roads Plans Regulation 5(2)(o) Sheet 5 of 16	TR010063 – APP 2.8	C01
Classification of Roads Plans Regulation 5(2)(o) Sheet 6 of 16	TR010063 – APP 2.8	C01
Classification of Roads Plans Regulation 5(2)(o) Sheet 7 of 16	TR010063 – APP 2.8	C01
Classification of Roads Plans Regulation 5(2)(o) Sheet 8 of 16	TR010063 – APP 2.8	C01
Classification of Roads Plans Regulation 5(2)(o) Sheet 9 of 16	TR010063 – APP 2.8	C01
Classification of Roads Plans Regulation 5(2)(o) Sheet 10 of 16	TR010063 – APP 2.8	C01

1.2. List of drawings in Part 2

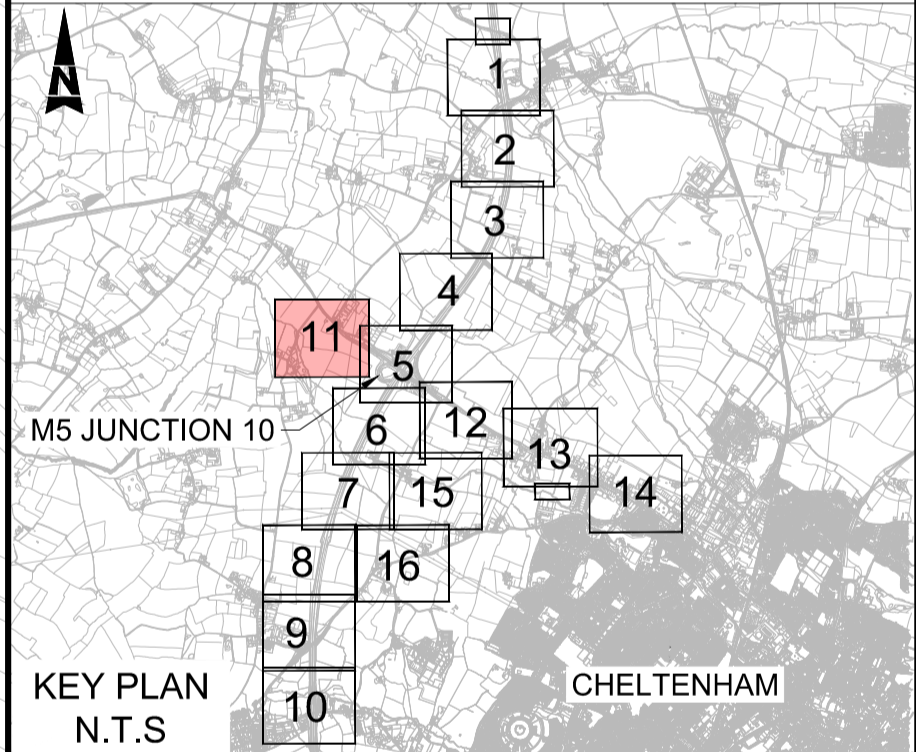
Document title	Document number	Version
Classification of Roads Plans Regulation 5(2)(o) Sheet 11 of 16	TR010063 – APP 2.8	C01
Classification of Roads Plans Regulation 5(2)(o) Sheet 12 of 16	TR010063 – APP 2.8	C01
Classification of Roads Plans Regulation 5(2)(o) Sheet 13 of 16	TR010063 – APP 2.8	C01
Classification of Roads Plans Regulation 5(2)(o) Sheet 14 of 16	TR010063 – APP 2.8	C01
Classification of Roads Plans Regulation 5(2)(o) Sheet 15 of 16	TR010063 – APP 2.8	C01
Classification of Roads Plans Regulation 5(2)(o) Sheet 16 of 16	TR010063 – APP 2.8	C01



NOTES:

1. THE CLASSIFICATION OF ROADS PLANS SHOULD BE READ IN CONJUNCTION WITH THE DEVELOPMENT CONSENT ORDER AND OTHER APPLICATION PLANS, IN PARTICULAR THE ARTICLE OF, AND SCHEDULE TO, THE DEVELOPMENT CONSENT ORDER, WHICH PROVIDE FOR THE CLASSIFICATION OF ROADS.
2. THE ROADS IDENTIFIED ON THIS PLAN ARE TO BE CLASSIFIED (OR RE-CLASSIFIED) AS PROVIDED FOR IN THE DEVELOPMENT CONSENT ORDER.

- KEY:**
- DEVELOPMENT CONSENT ORDER (DCO) LIMITS
 - - - PARISH BOUNDARY
 - SPECIAL ROADS
 - CLASSIFIED A ROADS
 - CLASSIFIED B ROADS
 - UNCLASSIFIED ROADS
 - (41) POINT NUMBER FOR CLASSIFICATION OF ROADS SCHEDULE
 - XXXX MAINLINE CHAINAGE
 - EXISTING ORDNANCE SURVEY DATA



Description						
Status	Revision	Drawn	Checked	Reviewed	Authorised	Issue Date
Description						
Status	Revision	Drawn	Checked	Reviewed	Authorised	Issue Date
Description						
Status	Revision	Drawn	Checked	Reviewed	Authorised	Issue Date
Description						
Status	Revision	Drawn	Checked	Reviewed	Authorised	Issue Date
Description						
FIRST SUBMISSION						
Status	Revision	Drawn	Checked	Reviewed	Authorised	Issue Date
A1	C01	NKRP	CJ	HC	BM	18/10/23
Drawing Suitability						Status
APPROVED - PUBLISHED						A1

Project Title
M5 Junction 10 Improvements Scheme

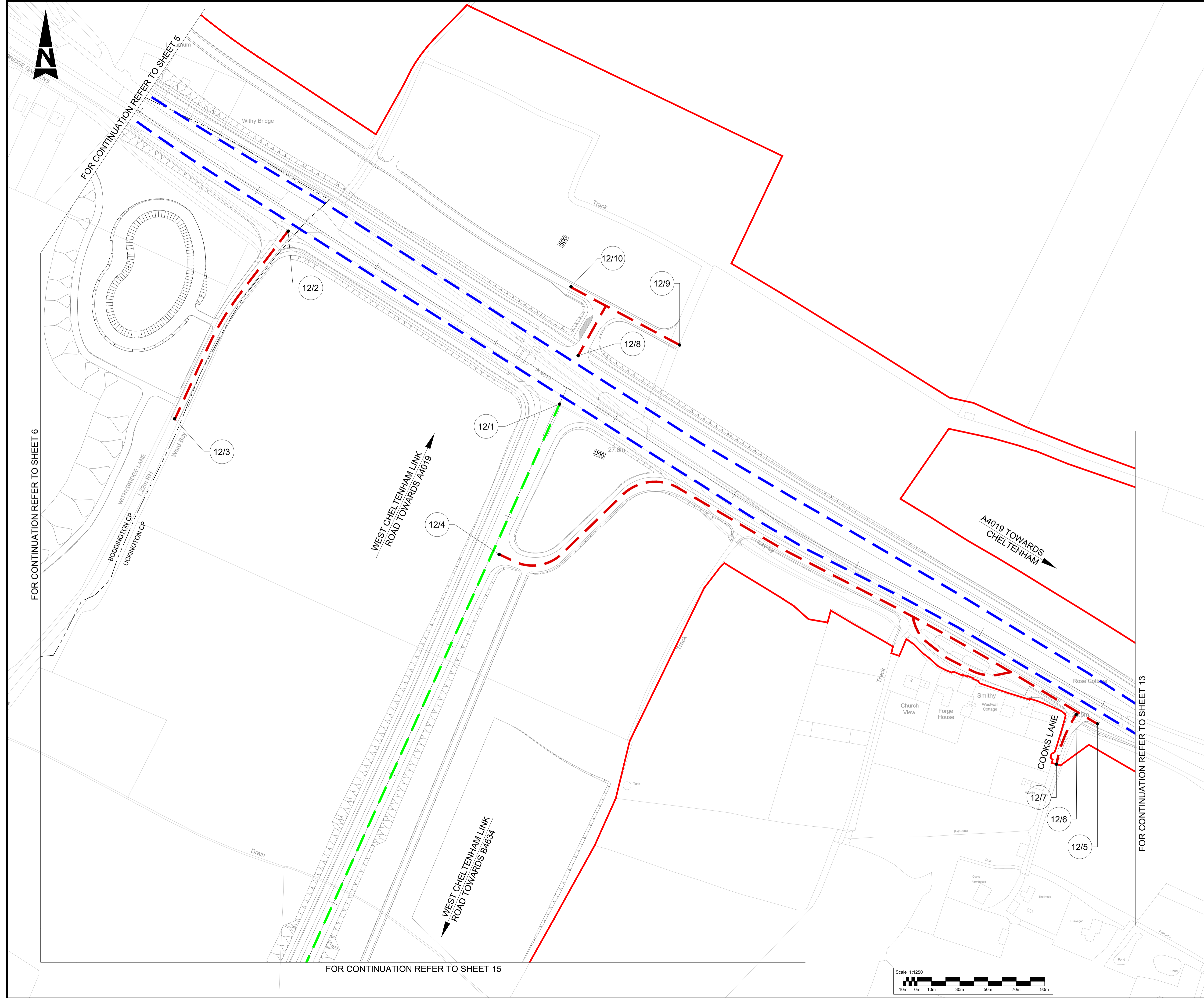
Drawing Title
**CLASSIFICATION OF ROADS PLANS
REGULATION 5(2)(o)
SHEET 11 OF 16**

Drawing Number
TR010063/APP/2.8

Original Size: **A1** Scale: 1:1250 Project Ref. No.: 5197035 Sheet: 11 of 16 Rev: **C01**

This map is based on Ordnance Survey material with the permission of Ordnance Survey on behalf of the Controller of His Majesty's Stationery Office. You are not permitted to copy, sub-license, distribute or sell any of this data to third parties in any form. © Crown Copyright and database rights 2023, Ordnance Survey 100019134.



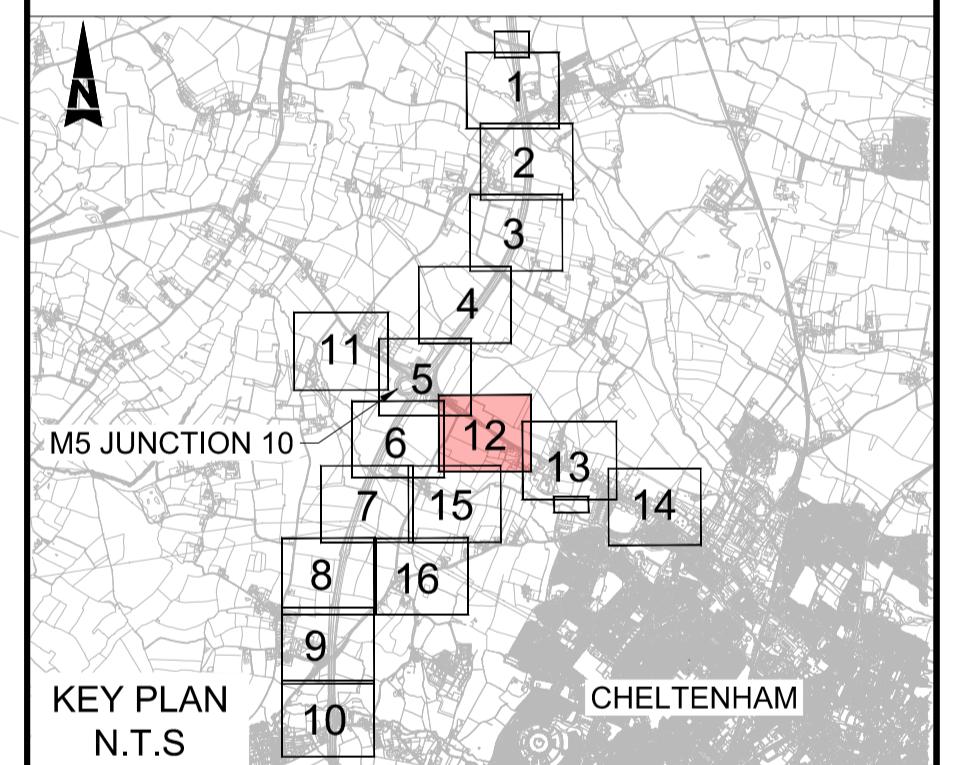


NOTES:

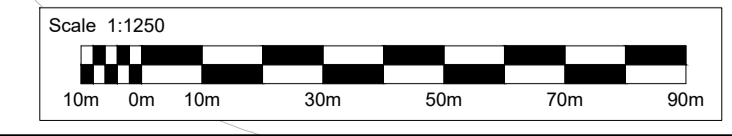
1. THE CLASSIFICATION OF ROADS PLANS SHOULD BE READ IN CONJUNCTION WITH THE DEVELOPMENT CONSENT ORDER AND OTHER APPLICATION PLANS, IN PARTICULAR THE ARTICLE OF, AND SCHEDULE TO, THE DEVELOPMENT CONSENT ORDER, WHICH PROVIDE FOR THE CLASSIFICATION OF ROADS.
2. THE ROADS IDENTIFIED ON THIS PLAN ARE TO BE CLASSIFIED (OR RE-CLASSIFIED) AS PROVIDED FOR IN THE DEVELOPMENT CONSENT ORDER.

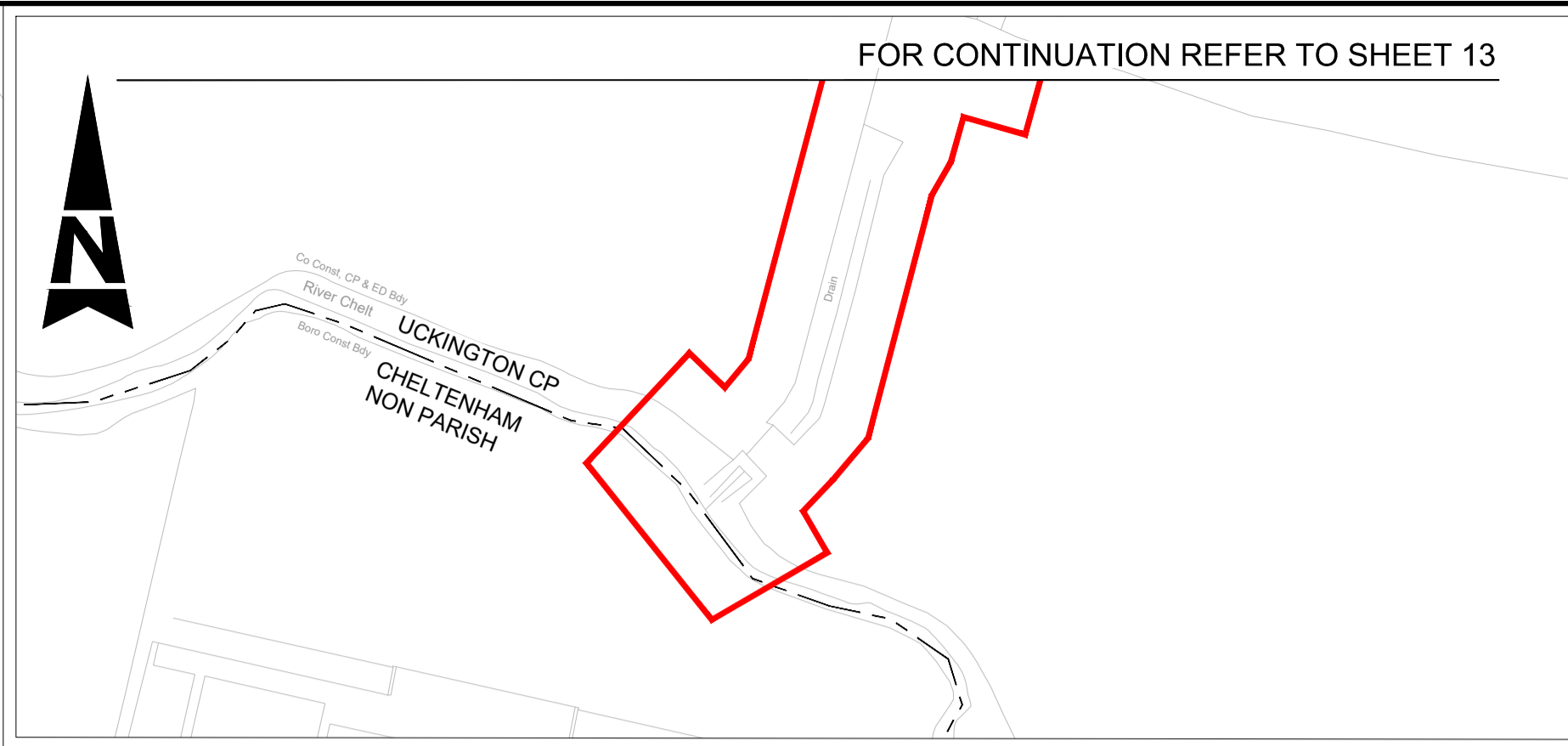
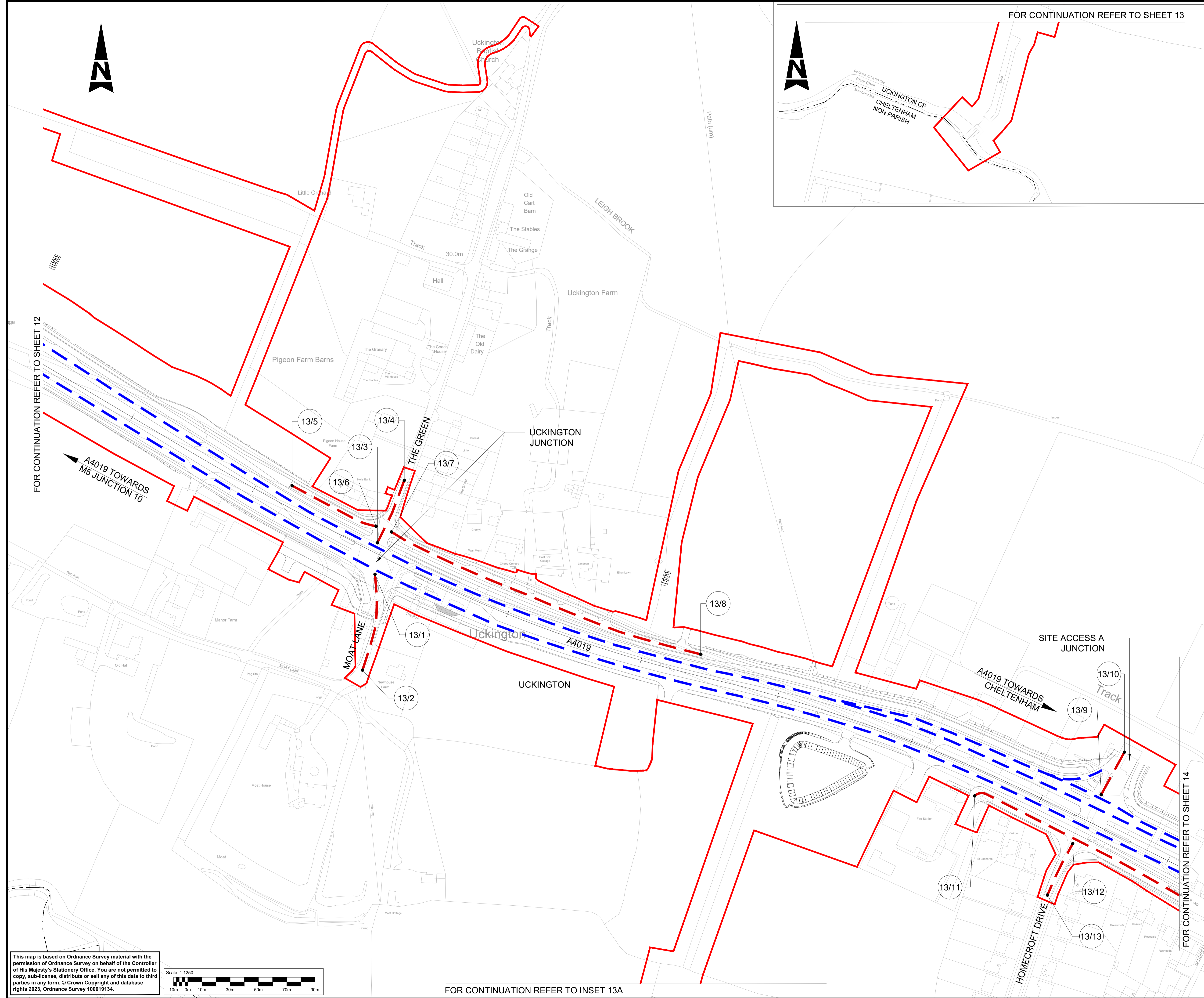
KEY:

- DEVELOPMENT CONSENT ORDER (DCO) LIMITS
- - - PARISH BOUNDARY
- SPECIAL ROADS
- - - CLASSIFIED A ROADS
- - - CLASSIFIED B ROADS
- - - UNCLASSIFIED ROADS
- (41) POINT NUMBER FOR CLASSIFICATION OF ROADS SCHEDULE
- XXXX MAINLINE CHAINAGE
- EXISTING ORDNANCE SURVEY DATA



Description						
Status	Revision	Drawn	Checked	Reviewed	Authorised	Issue Date
Description						
Status	Revision	Drawn	Checked	Reviewed	Authorised	Issue Date
Description						
Status	Revision	Drawn	Checked	Reviewed	Authorised	Issue Date
Description						
Status	Revision	Drawn	Checked	Reviewed	Authorised	Issue Date
Description						
FIRST SUBMISSION						
Status	Revision	Drawn	Checked	Reviewed	Authorised	Issue Date
A1	C01	NKRP	CJ	HC	BM	18/10/23
Drawing Suitability						Status
APPROVED - PUBLISHED						A1
Project Title						
M5 Junction 10 Improvements Scheme						
Drawing Title						
CLASSIFICATION OF ROADS PLANS REGULATION 5(2)(o) SHEET 12 OF 16						
Drawing Number						
TR010063/APP/2.8						
Original Size:	A1	Scale:	1:1250	Project Ref. No.:	5197035	Sheet: 12 of 16
				Rev:	C01	

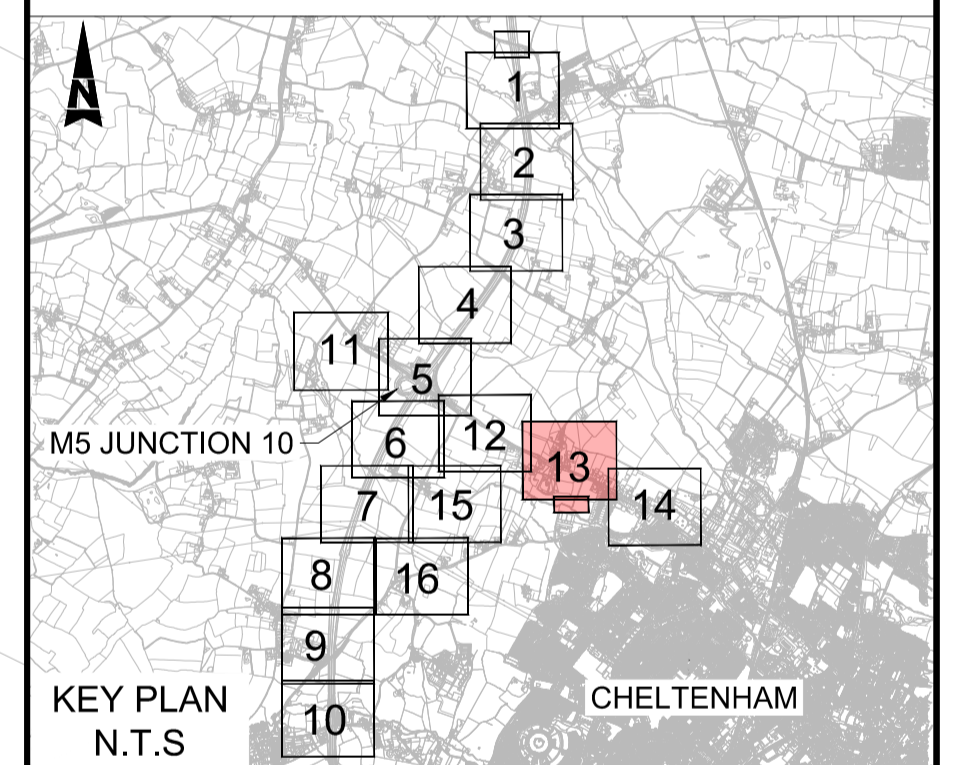




NOTES:

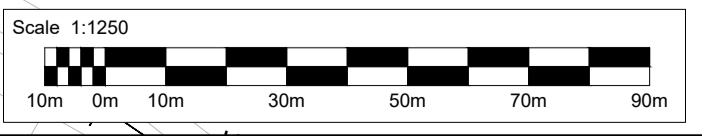
1. THE CLASSIFICATION OF ROADS PLANS SHOULD BE READ IN CONJUNCTION WITH THE DEVELOPMENT CONSENT ORDER AND OTHER APPLICATION PLANS, IN PARTICULAR THE ARTICLE OF, AND SCHEDULE TO, THE DEVELOPMENT CONSENT ORDER, WHICH PROVIDE FOR THE CLASSIFICATION OF ROADS.
2. THE ROADS IDENTIFIED ON THIS PLAN ARE TO BE CLASSIFIED (OR RE-CLASSIFIED) AS PROVIDED FOR IN THE DEVELOPMENT CONSENT ORDER.

- KEY:**
- DEVELOPMENT CONSENT ORDER (DCO) LIMITS
 - - - PARISH BOUNDARY
 - SPECIAL ROADS
 - CLASSIFIED A ROADS
 - CLASSIFIED B ROADS
 - UNCLASSIFIED ROADS
 - (41) POINT NUMBER FOR CLASSIFICATION OF ROADS SCHEDULE
 - XXXX MAINLINE CHAINAGE
 - EXISTING ORDNANCE SURVEY DATA

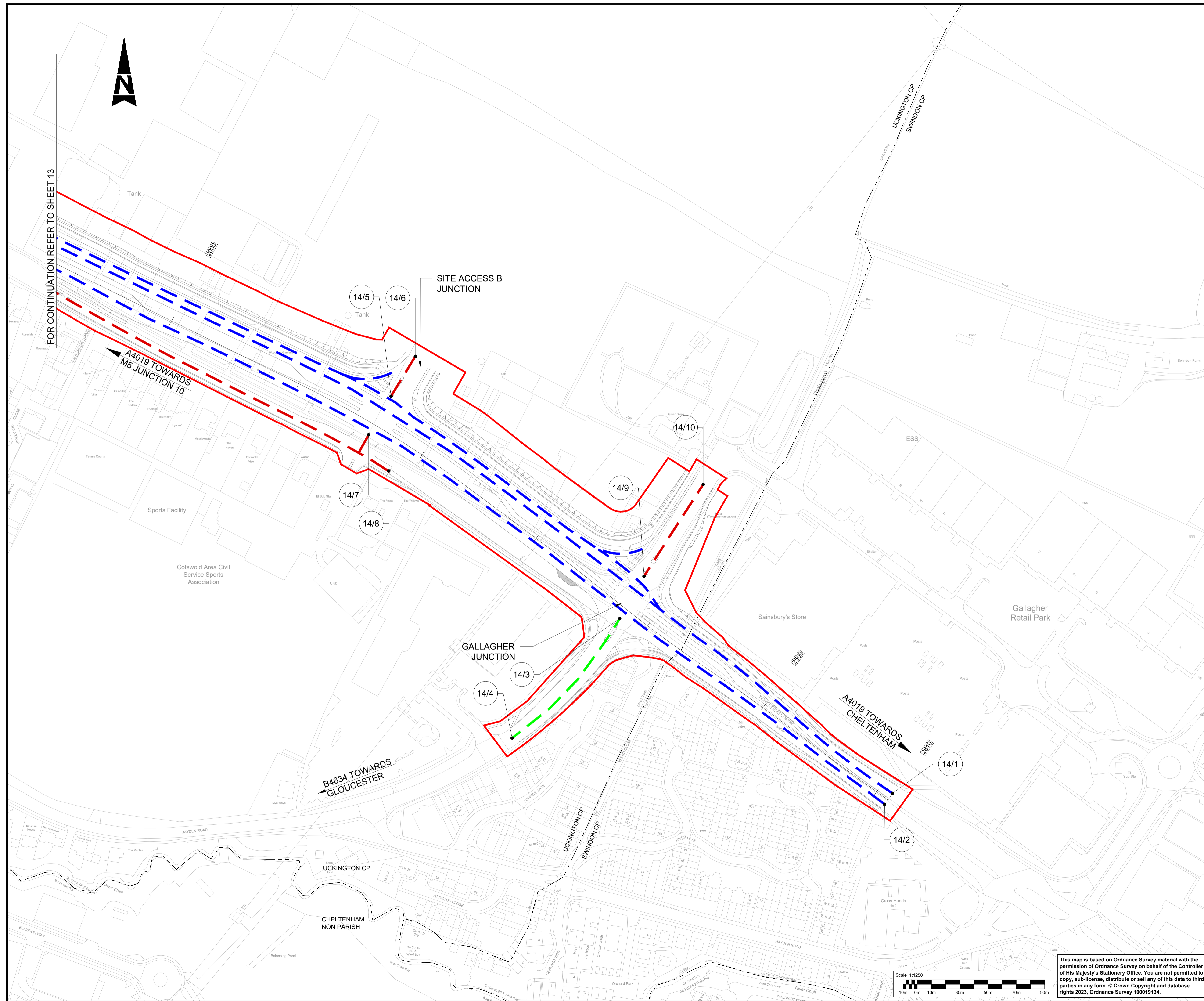


Description						
Status	Revision	Drawn	Checked	Reviewed	Authorised	Issue Date
Description						
Status	Revision	Drawn	Checked	Reviewed	Authorised	Issue Date
Description						
Status	Revision	Drawn	Checked	Reviewed	Authorised	Issue Date
Description						
FIRST SUBMISSION						
Status	Revision	Drawn	Checked	Reviewed	Authorised	Issue Date
A1	C01	NKRP	CJ	HC	BM	18/10/23
Drawing Suitability						Status
APPROVED - PUBLISHED						A1
Project Title						
M5 Junction 10 Improvements Scheme						
Drawing Title						
CLASSIFICATION OF ROADS PLANS REGULATION 5(2)(o) SHEET 13 OF 16						
Drawing Number						
TR010063/APP/2.8						
Original Size	A1	Scale	1:1250	Project Ref. No.	5197035	Sheet
						13 of 16
				Rev.	C01	

This map is based on Ordnance Survey material with the permission of Ordnance Survey on behalf of the Controller of His Majesty's Stationery Office. You are not permitted to copy, sub-license, distribute or sell any of this data to third parties in any form. © Crown Copyright and database rights 2023, Ordnance Survey 100019134.

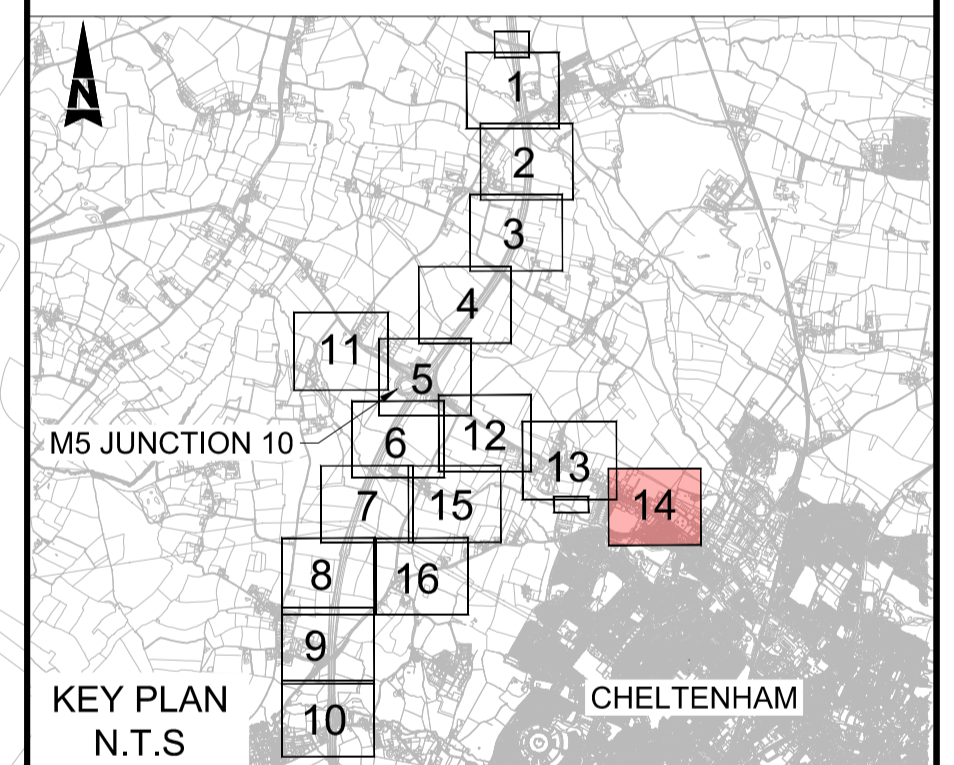


FOR CONTINUATION REFER TO INSET 13A



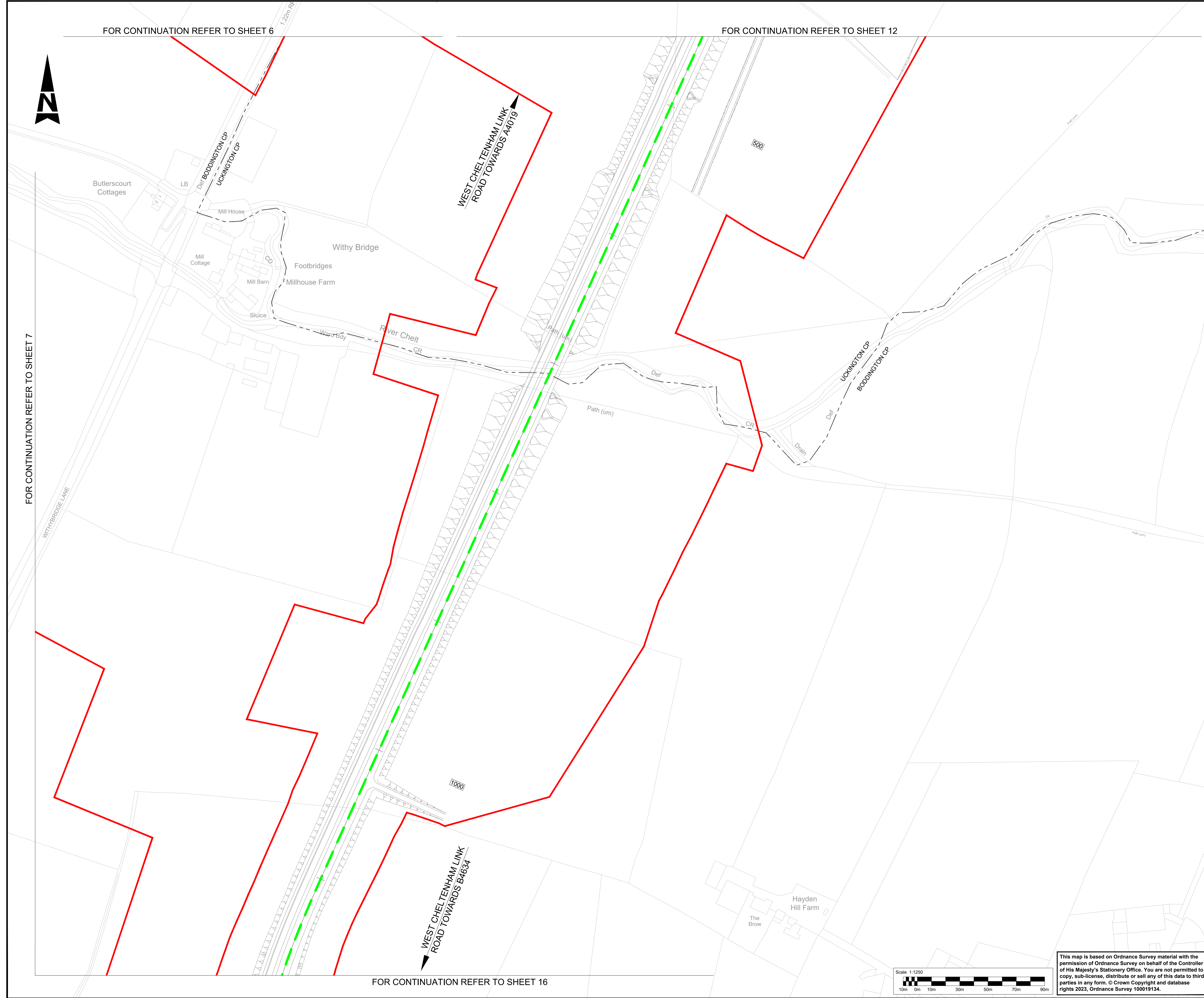
- NOTES:**
- THE CLASSIFICATION OF ROADS PLANS SHOULD BE READ IN CONJUNCTION WITH THE DEVELOPMENT CONSENT ORDER AND OTHER APPLICATION PLANS, IN PARTICULAR THE ARTICLE OF, AND SCHEDULE TO, THE DEVELOPMENT CONSENT ORDER, WHICH PROVIDE FOR THE CLASSIFICATION OF ROADS.
 - THE ROADS IDENTIFIED ON THIS PLAN ARE TO BE CLASSIFIED (OR RE-CLASSIFIED) AS PROVIDED FOR IN THE DEVELOPMENT CONSENT ORDER.

- KEY:**
- DEVELOPMENT CONSENT ORDER (DCO) LIMITS
 - PARISH BOUNDARY
 - SPECIAL ROADS
 - CLASSIFIED A ROADS
 - CLASSIFIED B ROADS
 - UNCLASSIFIED ROADS
 - (41) POINT NUMBER FOR CLASSIFICATION OF ROADS SCHEDULE
 - XXXX MAINLINE CHAINAGE
 - EXISTING ORDNANCE SURVEY DATA



Description									
Status	Revision	Drawn	Checked	Reviewed	Authorised	Issue Date			
Description									
Status	Revision	Drawn	Checked	Reviewed	Authorised	Issue Date			
Description									
Status	Revision	Drawn	Checked	Reviewed	Authorised	Issue Date			
Description									
FIRST SUBMISSION									
Status	Revision	Drawn	Checked	Reviewed	Authorised	Issue Date			
A1	C01	NKRP	CJ	HC	BM	18/10/23			
Drawing Suitability						Status			
APPROVED - PUBLISHED						A1			
Project Title									
M5 Junction 10 Improvements Scheme									
Drawing Title									
CLASSIFICATION OF ROADS PLANS REGULATION 5(2)(o) SHEET 14 OF 16									
Drawing Number									
TR010063/APP/2.8									
Original Scale:	A1	Scale:	1:1250	Project Ref. No.:	5197035	Sheet:	14 of 16	Rev:	C01

This map is based on Ordnance Survey material with the permission of Ordnance Survey on behalf of the Controller of His Majesty's Stationery Office. You are not permitted to copy, sub-license, distribute or sell any of this data to third parties in any form. © Crown Copyright and database rights 2023, Ordnance Survey 100019134.

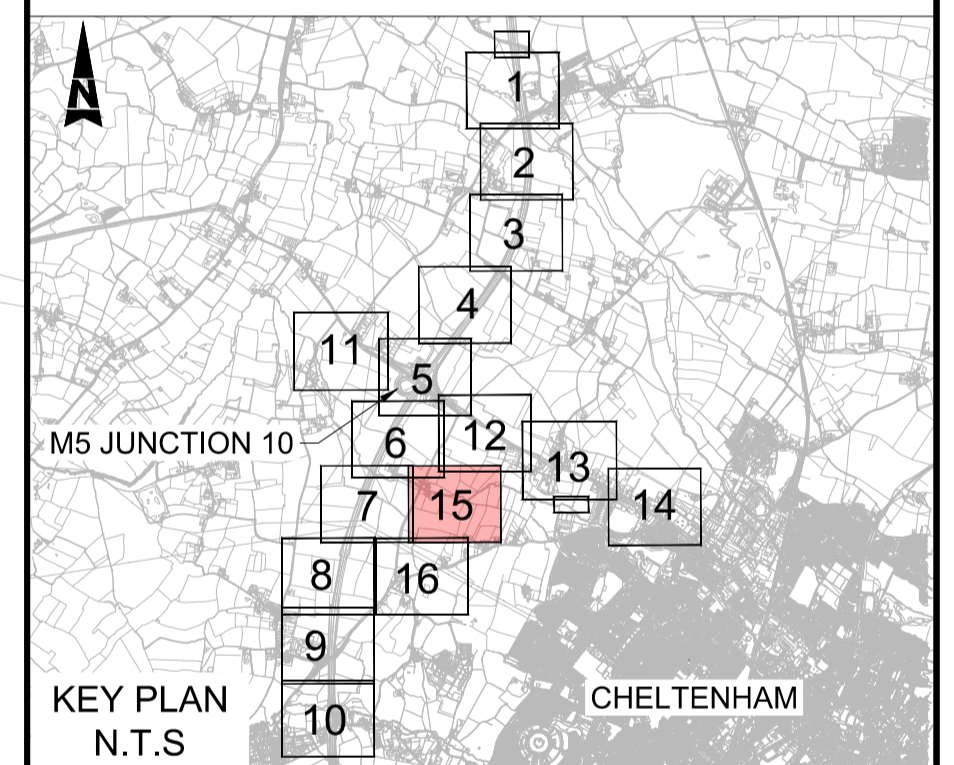


NOTES:

1. THE CLASSIFICATION OF ROADS PLANS SHOULD BE READ IN CONJUNCTION WITH THE DEVELOPMENT CONSENT ORDER AND OTHER APPLICATION PLANS, IN PARTICULAR THE ARTICLE OF, AND SCHEDULE TO, THE DEVELOPMENT CONSENT ORDER, WHICH PROVIDE FOR THE CLASSIFICATION OF ROADS.
2. THE ROADS IDENTIFIED ON THIS PLAN ARE TO BE CLASSIFIED (OR RE-CLASSIFIED) AS PROVIDED FOR IN THE DEVELOPMENT CONSENT ORDER.

KEY:

- DEVELOPMENT CONSENT ORDER (DCO) LIMITS
- - - PARISH BOUNDARY
- SPECIAL ROADS
- CLASSIFIED A ROADS
- CLASSIFIED B ROADS
- UNCLASSIFIED ROADS
- (41) POINT NUMBER FOR CLASSIFICATION OF ROADS SCHEDULE
- XXXX MAINLINE CHAINAGE
- EXISTING ORDNANCE SURVEY DATA



Description	Status	Revision	Drawn	Checked	Reviewed	Authorised	Issue Date
Description							
Description							
Description							
Description							
Description							
Description							
STATUS	A1	C01	NKRP	CJ	HC	BM	18/10/23
Drawing Suitability	APPROVED - PUBLISHED						A1

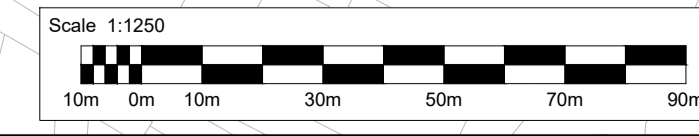
Project Title
M5 Junction 10 Improvements Scheme

Drawing Title
**CLASSIFICATION OF ROADS PLANS
REGULATION 5(2)(o)
SHEET 15 OF 16**

Drawing Number
TR010063/APP/2.8

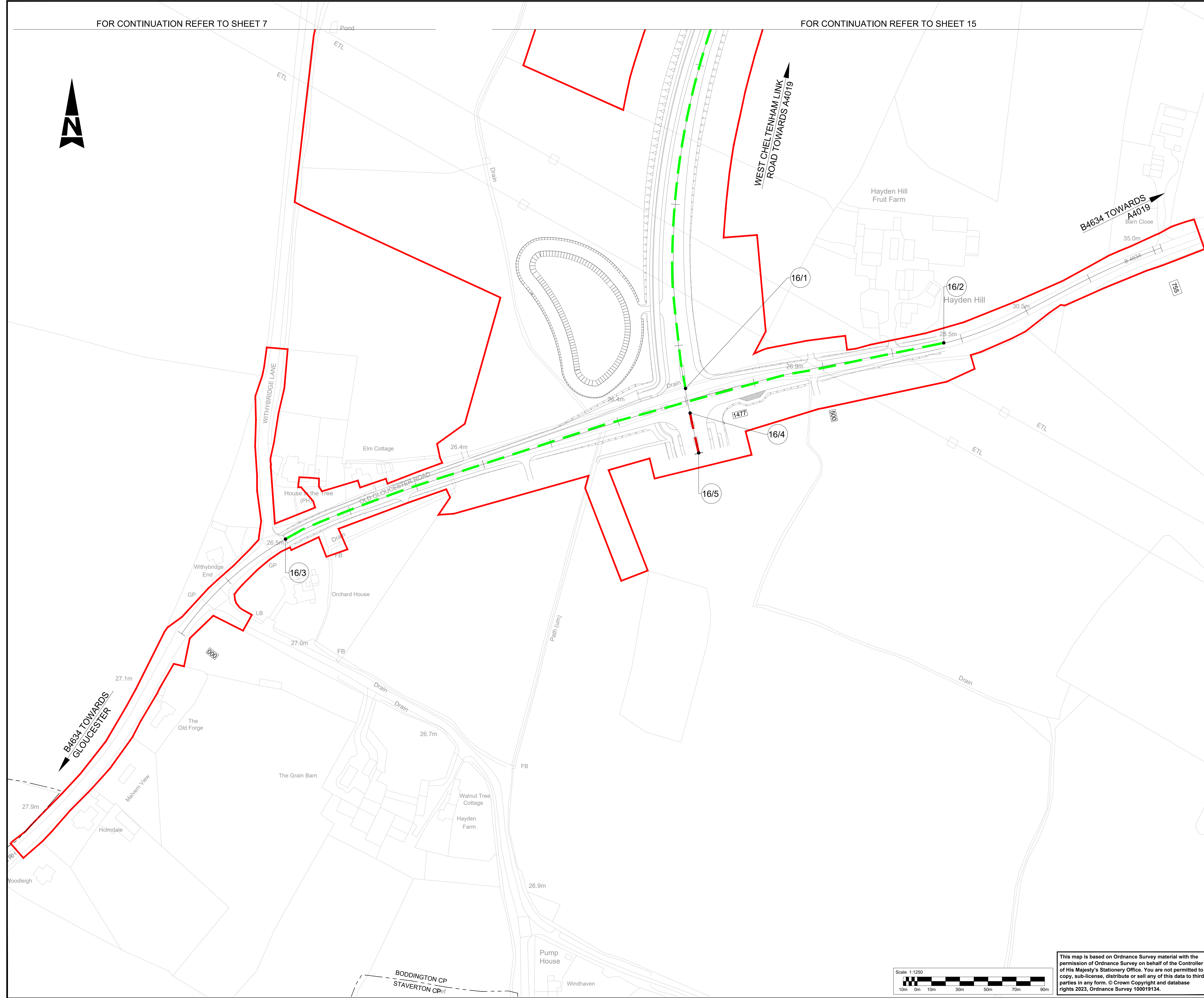
Original Scale: **A1** Scale: 1:1250 Project Ref. No.: 5197035 Sheet: 15 of 16 Rev: **C01**

This map is based on Ordnance Survey material with the permission of Ordnance Survey on behalf of the Controller of His Majesty's Stationery Office. You are not permitted to copy, sub-license, distribute or sell any of this data to third parties in any form. © Crown Copyright and database rights 2023, Ordnance Survey 100019134.



FOR CONTINUATION REFER TO SHEET 7

FOR CONTINUATION REFER TO SHEET 15

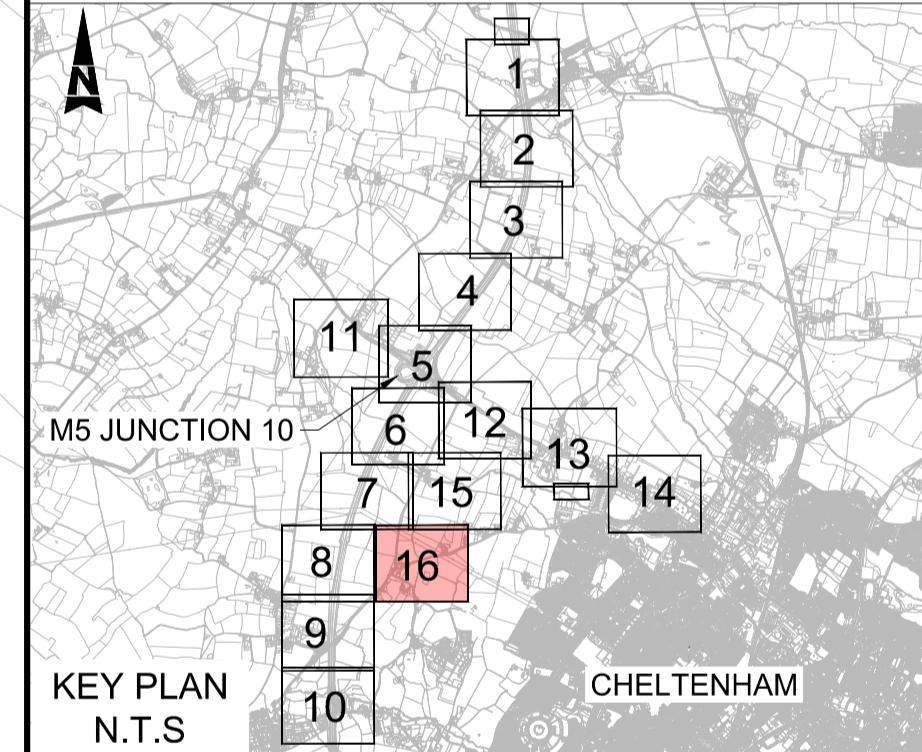


NOTES:

1. THE CLASSIFICATION OF ROADS PLANS SHOULD BE READ IN CONJUNCTION WITH THE DEVELOPMENT CONSENT ORDER AND OTHER APPLICATION PLANS, IN PARTICULAR THE ARTICLE OF, AND SCHEDULE TO, THE DEVELOPMENT CONSENT ORDER, WHICH PROVIDE FOR THE CLASSIFICATION OF ROADS.
2. THE ROADS IDENTIFIED ON THIS PLAN ARE TO BE CLASSIFIED (OR RE-CLASSIFIED) AS PROVIDED FOR IN THE DEVELOPMENT CONSENT ORDER.

KEY:

- DEVELOPMENT CONSENT ORDER (DCO) LIMITS
- - - PARISH BOUNDARY
- SPECIAL ROADS
- CLASSIFIED A ROADS
- CLASSIFIED B ROADS
- UNCLASSIFIED ROADS
- (41) POINT NUMBER FOR CLASSIFICATION OF ROADS SCHEDULE
- XXXX MAINLINE CHAINAGE
- EXISTING ORDNANCE SURVEY DATA



KEY PLAN N.T.S

Description

Status	Revision	Drawn	Checked	Reviewed	Authorised	Issue Date
--------	----------	-------	---------	----------	------------	------------

Description

Status	Revision	Drawn	Checked	Reviewed	Authorised	Issue Date
--------	----------	-------	---------	----------	------------	------------

Description

Status	Revision	Drawn	Checked	Reviewed	Authorised	Issue Date
--------	----------	-------	---------	----------	------------	------------

Description

FIRST SUBMISSION						
Status	Revision	Drawn	Checked	Reviewed	Authorised	Issue Date
A1	C01	NKRP	CJ	HC	BM	18/10/23

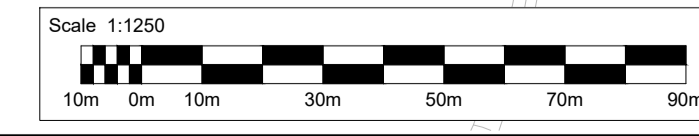
Drawing Suitability	Status
APPROVED - PUBLISHED	A1

Project Title
M5 Junction 10 Improvements Scheme

Drawing Title
CLASSIFICATION OF ROADS PLANS REGULATION 5(2)(o) SHEET 16 OF 16

Drawing Number
TR010063/APP/2.8

Original Scale:	A1	Scale:	1:1250	Project Ref. No.:	5197035	Sheet:	16 of 16	Rev.:	C01
-----------------	----	--------	--------	-------------------	---------	--------	----------	-------	-----



This map is based on Ordnance Survey material with the permission of Ordnance Survey on behalf of the Controller of His Majesty's Stationery Office. You are not permitted to copy, sub-license, distribute or sell any of this data to third parties in any form. © Crown Copyright and database rights 2023, Ordnance Survey 100019134.

ATKINS

Member of the SNC-Lavalin Group

5th Floor, Block 5
Shire Hall
Bearland
Gloucester
GL1 2TH