

M5 Junction 10 Improvements Scheme

General Arrangement Plans - Part 2

TR010063 - APP 2.9

Regulation 5 (2) (o)
Planning Act 2008
Infrastructure Planning (Applications: Prescribed Forms and Procedure) Regulations 2009

Volume 2
December 2023

THIS PAGE IS LEFT INTENTIONALLY BLANK

Infrastructure Planning Planning Act 2008

The Infrastructure Planning (Applications: Prescribed Forms and Procedure) Regulations 2009

M5 Junction 10 Improvements Scheme Development Consent Order 202[x]

2.9 General Arrangement Plans – Part 2

Regulation Number:	Regulation 5(2)(o)
Planning Inspectorate Scheme Reference	TR010063
Application Document Reference	TR010063 – APP 2.9
Author:	M5 Junction 10 Improvements Scheme Project Team

Version	Date	Status of Version
Rev 0	December 2023	DCO Application

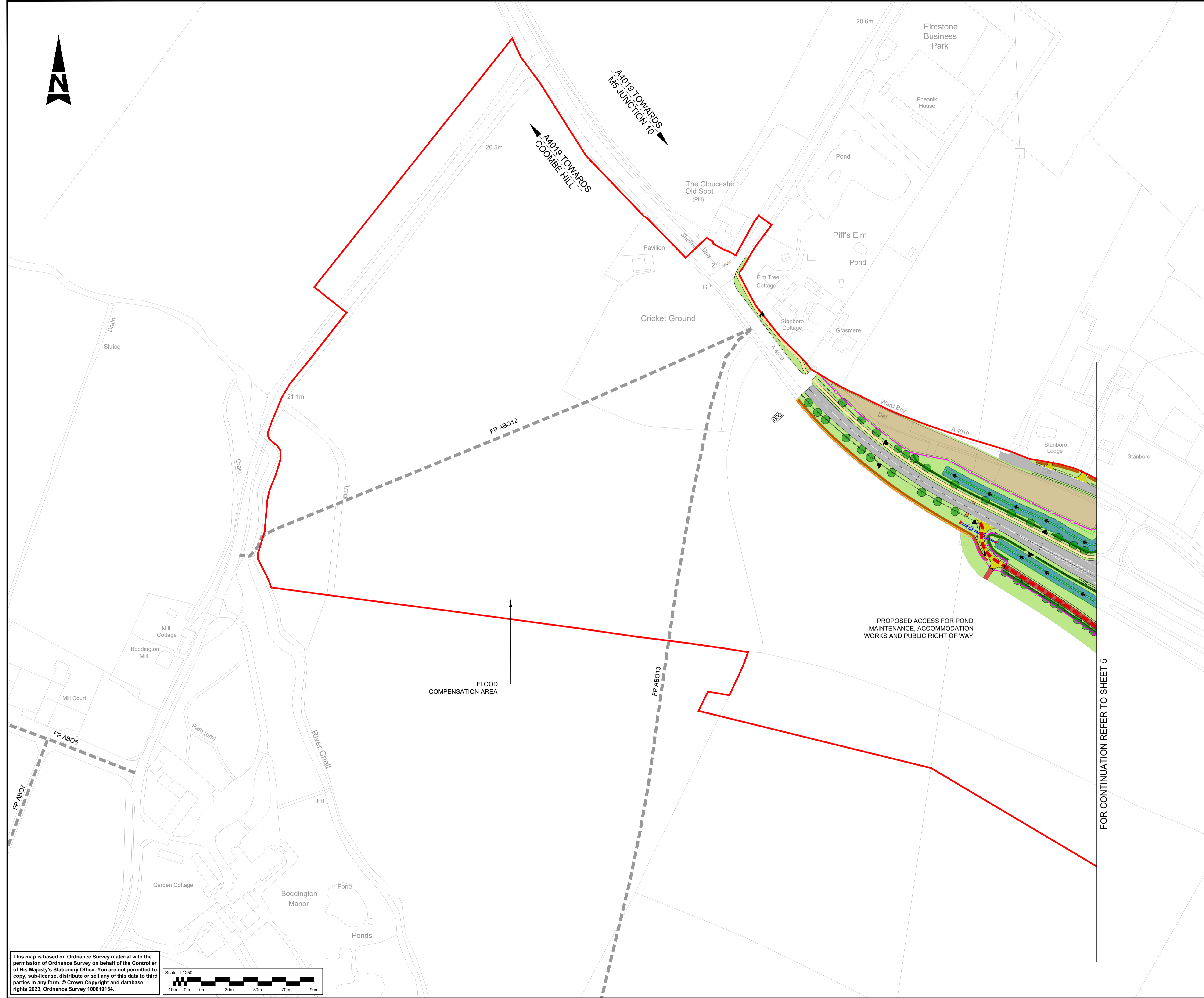
1. Schedule of plans included in the application

1.1. List of drawings in Part 1

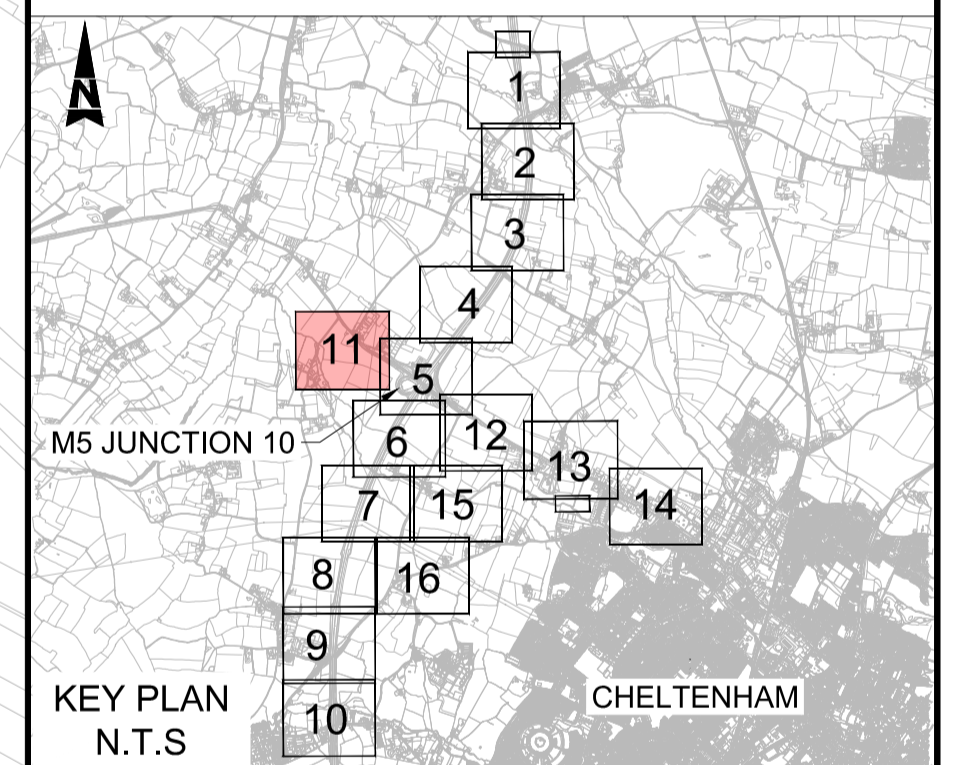
Document title	Document number	Version
2.9 General Arrangement Plans – General Overview of the Scheme Regulation 5(2)(o)	TR010063 – APP 2.9	C01
2.9 General Arrangement Plans – Key Plan Regulation 5(2)(o)	TR010063 – APP 2.9	C01
2.9 General Arrangement Plans – Key Legend Regulation 5(2)(o)	TR010063 – APP 2.9	C01
2.9 General Arrangement Plans – Sheet 1 of 16 Regulation 5(2)(o)	TR010063 – APP 2.9	C01
2.9 General Arrangement Plans – Sheet 2 of 16 Regulation 5(2)(o)	TR010063 – APP 2.9	C01
2.9 General Arrangement Plans – Sheet 3 of 16 Regulation 5(2)(o)	TR010063 – APP 2.9	C01
2.9 General Arrangement Plans – Sheet 4 of 16 Regulation 5(2)(o)	TR010063 – APP 2.9	C01
2.9 General Arrangement Plans – Sheet 5 of 16 Regulation 5(2)(o)	TR010063 – APP 2.9	C01
2.9 General Arrangement Plans – Sheet 6 of 16 Regulation 5(2)(o)	TR010063 – APP 2.9	C01
2.9 General Arrangement Plans – Sheet 7 of 16 Regulation 5(2)(o)	TR010063 – APP 2.9	C01
2.9 General Arrangement Plans – Sheet 8 of 16 Regulation 5(2)(o)	TR010063 – APP 2.9	C01
2.9 General Arrangement Plans – Sheet 9 of 16 Regulation 5(2)(o)	TR010063 – APP 2.9	C01
2.9 General Arrangement Plans – Sheet 10 of 16 Regulation 5(2)(o)	TR010063 – APP 2.9	C01

1.2. List of drawings in Part 2

Document title	Document number	Version
2.9 General Arrangement Plans – Sheet 11 of 16 Regulation 5(2)(o)	TR010063 – APP 2.9	C01
2.9 General Arrangement Plans – Sheet 12 of 16 Regulation 5(2)(o)	TR010063 – APP 2.9	C01
2.9 General Arrangement Plans – Sheet 13 of 16 Regulation 5(2)(o)	TR010063 – APP 2.9	C01
2.9 General Arrangement Plans – Sheet 14 of 16 Regulation 5(2)(o)	TR010063 – APP 2.9	C01
2.9 General Arrangement Plans – Sheet 15 of 16 Regulation 5(2)(o)	TR010063 – APP 2.9	C01
2.9 General Arrangement Plans – Sheet 16 of 16 Regulation 5(2)(o)	TR010063 – APP 2.9	C01



- NOTES:**
1. THESE PLANS SHOULD BE READ IN CONJUNCTION WITH TR010063/APP/2.9 KEY PLAN AND TR010063/APP/2.9 KEY LEGEND.
 2. THESE PLANS SHOULD BE READ IN CONJUNCTION WITH THE DEVELOPMENT CONSENT ORDER AND OTHER APPLICATION PLANS.

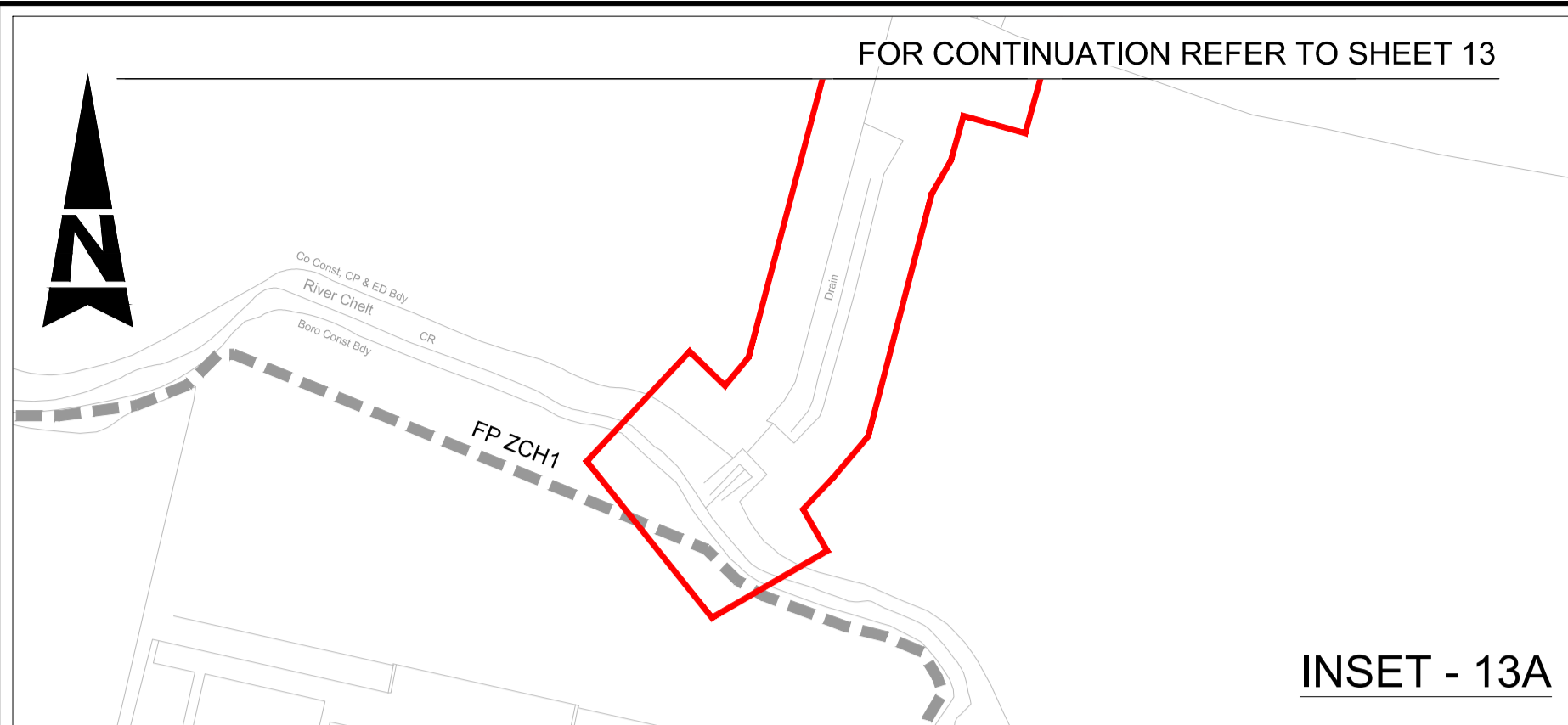
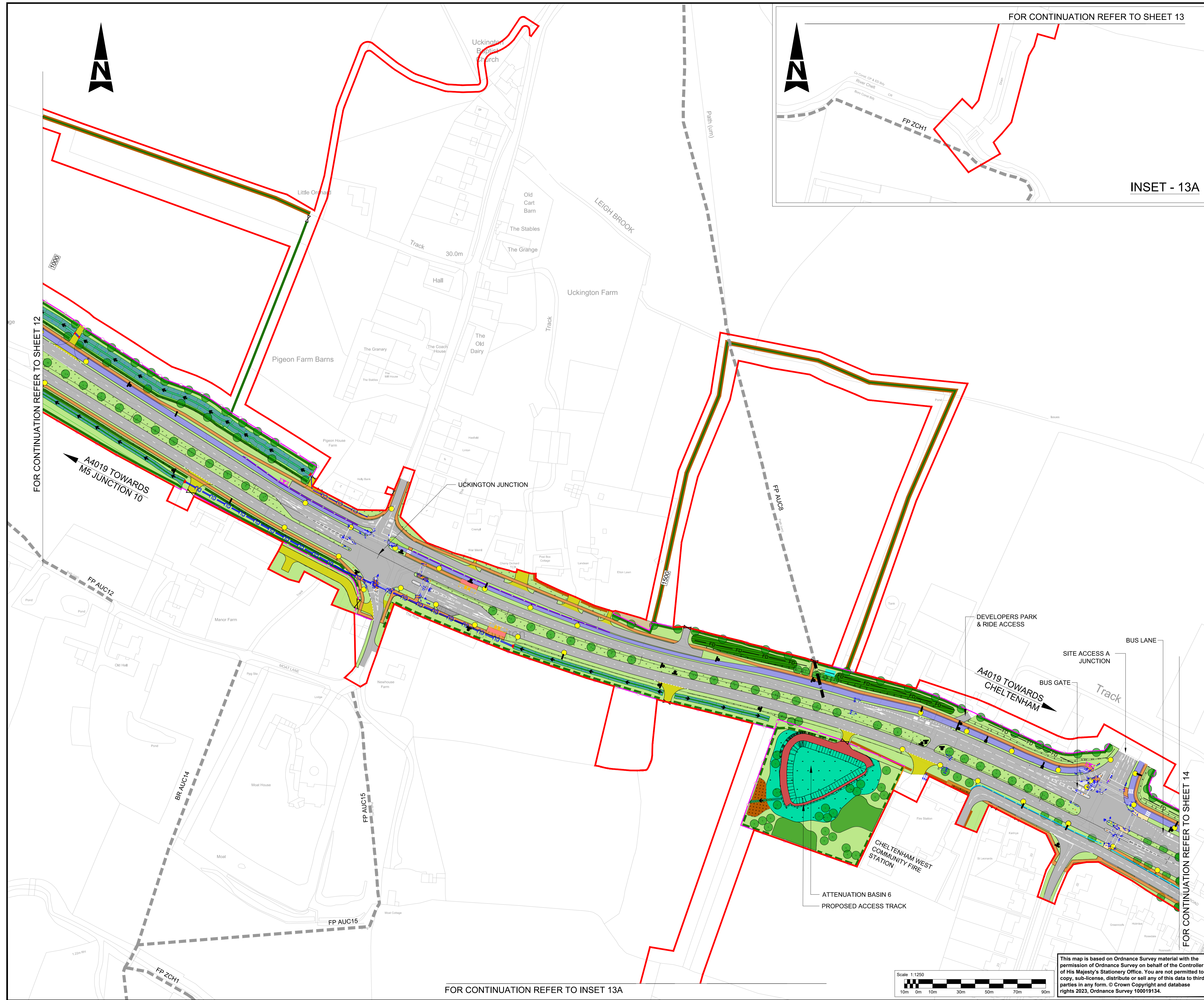


FOR CONTINUATION REFER TO SHEET 5

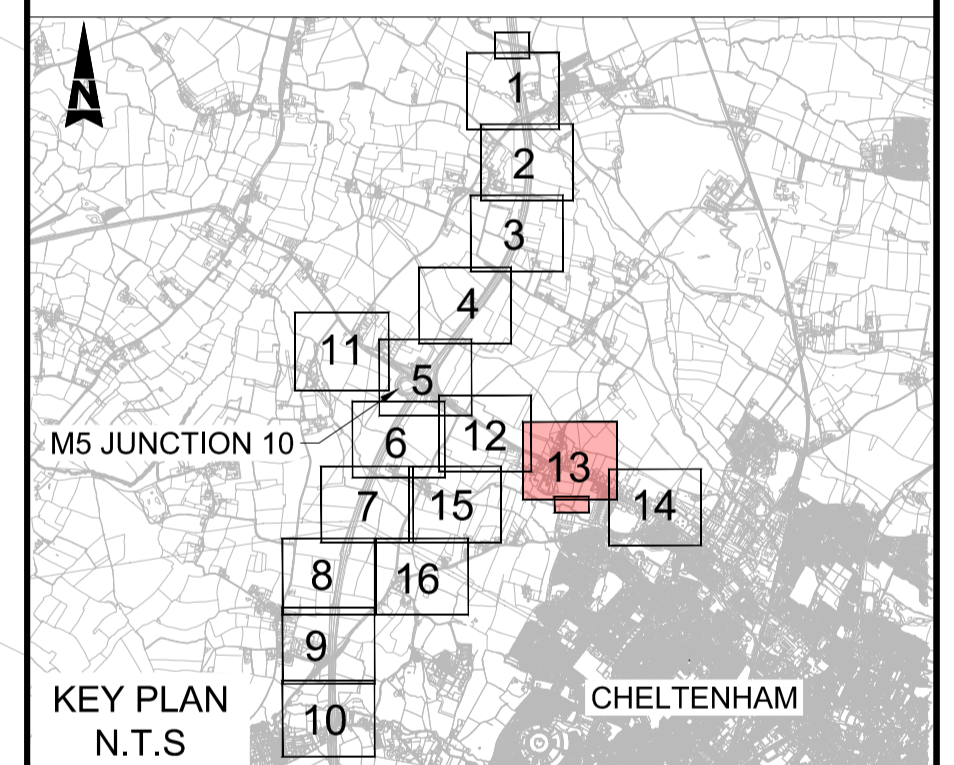
Description						
Status	Revision	Drawn	Checked	Reviewed	Authorised	Issue Date
Description						
Status	Revision	Drawn	Checked	Reviewed	Authorised	Issue Date
Description						
Status	Revision	Drawn	Checked	Reviewed	Authorised	Issue Date
Description						
FIRST SUBMISSION						
Status	Revision	Drawn	Checked	Reviewed	Authorised	Issue Date
A1	C01	NKRP	CJ	HC	BM	18/10/23
Drawing Suitability						Status
APPROVED - PUBLISHED						A1
Project Title						
M5 Junction 10 Improvements Scheme						
Drawing Title						
GENERAL ARRANGEMENT PLANS REGULATION 5(2)(o) SHEET 11 OF 16						
Drawing Number						
TR010063/APP/2.9						
Original Size	A1	Scale	1:1250	Project Ref. No.	5197035	Sheet
						11 of 16
				Rev.	C01	

This map is based on Ordnance Survey material with the permission of Ordnance Survey on behalf of the Controller of His Majesty's Stationery Office. You are not permitted to copy, sub-license, distribute or sell any of this data to third parties in any form. © Crown Copyright and database rights 2023, Ordnance Survey 100019134.

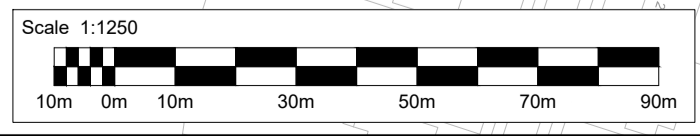
Scale 1:1250



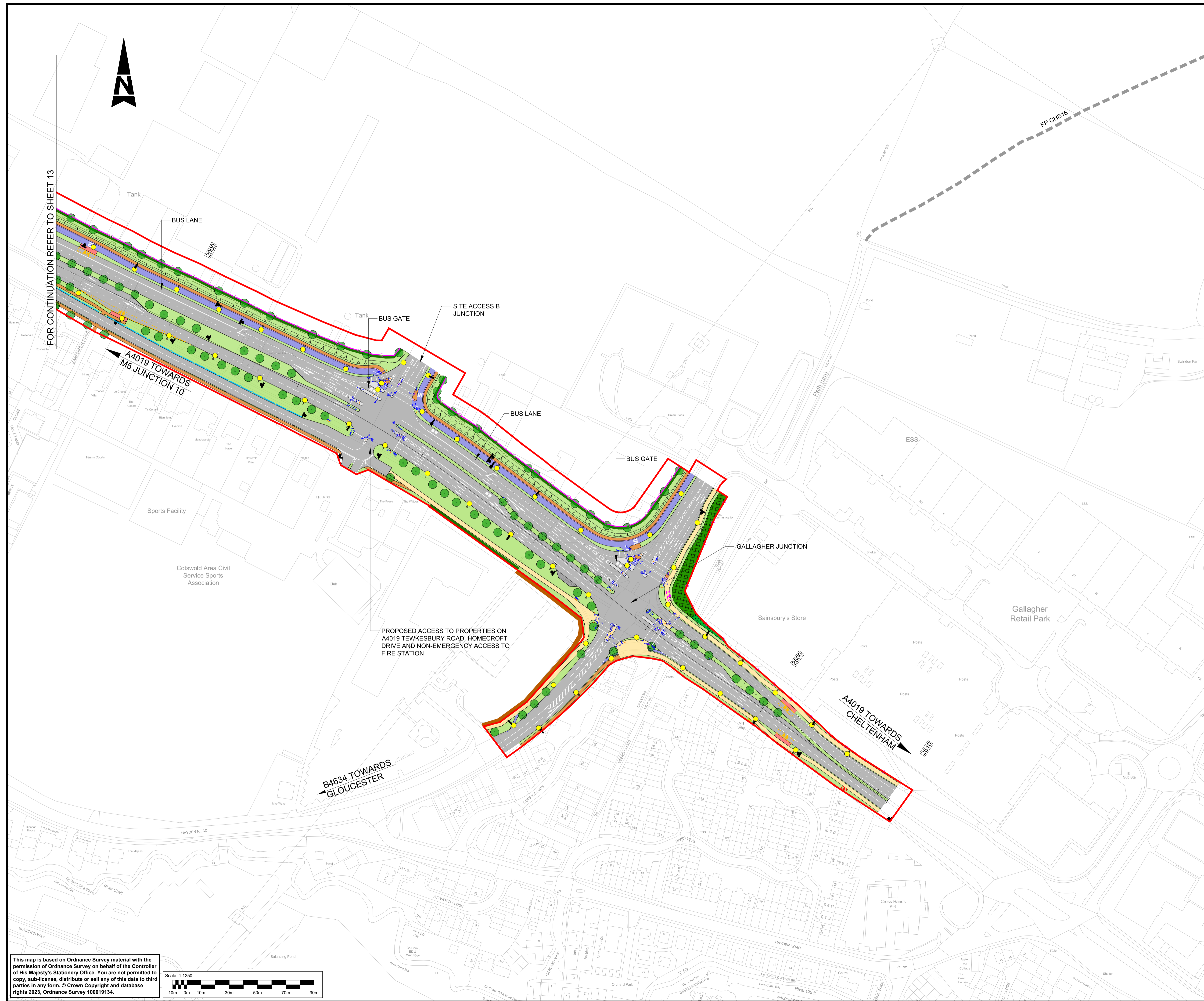
- NOTES:**
1. THESE PLANS SHOULD BE READ IN CONJUNCTION WITH TR010063/APP/2.9 KEY PLAN AND TR010063/APP/2.9 KEY LEGEND.
 2. THESE PLANS SHOULD BE READ IN CONJUNCTION WITH THE DEVELOPMENT CONSENT ORDER AND OTHER APPLICATION PLANS.



Description						
Status	Revision	Drawn	Checked	Reviewed	Authorised	Issue Date
Description						
Status	Revision	Drawn	Checked	Reviewed	Authorised	Issue Date
Description						
Status	Revision	Drawn	Checked	Reviewed	Authorised	Issue Date
Description						
FIRST SUBMISSION						
Status	Revision	Drawn	Checked	Reviewed	Authorised	Issue Date
A1	C01	NKRP	CJ	HC	BM	18/10/23
Drawing Suitability						Status
APPROVED - PUBLISHED						A1
Project Title						
M5 Junction 10 Improvements Scheme						
Drawing Title						
GENERAL ARRANGEMENT PLANS REGULATION 5(2)(o) SHEET 13 OF 16						
Drawing Number						
TR010063/APP/2.9						
Original Scale:	A1	Scale:	1:1250	Project Ref. No.:	5197035	Sheet: 13 of 16
						Rev: C01

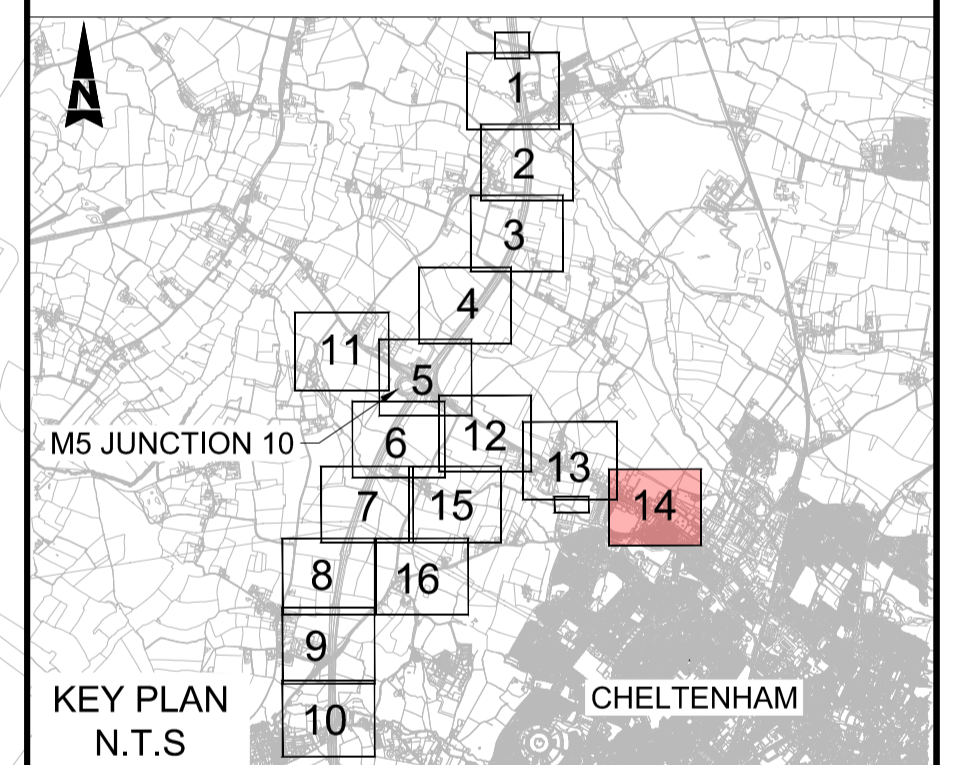


This map is based on Ordnance Survey material with the permission of Ordnance Survey on behalf of the Controller of His Majesty's Stationery Office. You are not permitted to copy, sub-license, distribute or sell any of this data to third parties in any form. © Crown Copyright and database rights 2023, Ordnance Survey 100019134.



- NOTES:**
1. THESE PLANS SHOULD BE READ IN CONJUNCTION WITH TR010063/APP/2.9 KEY PLAN AND TR010063/APP/2.9 KEY LEGEND.
 2. THESE PLANS SHOULD BE READ IN CONJUNCTION WITH THE DEVELOPMENT CONSENT ORDER AND OTHER APPLICATION PLANS.

FOR CONTINUATION REFER TO SHEET 13



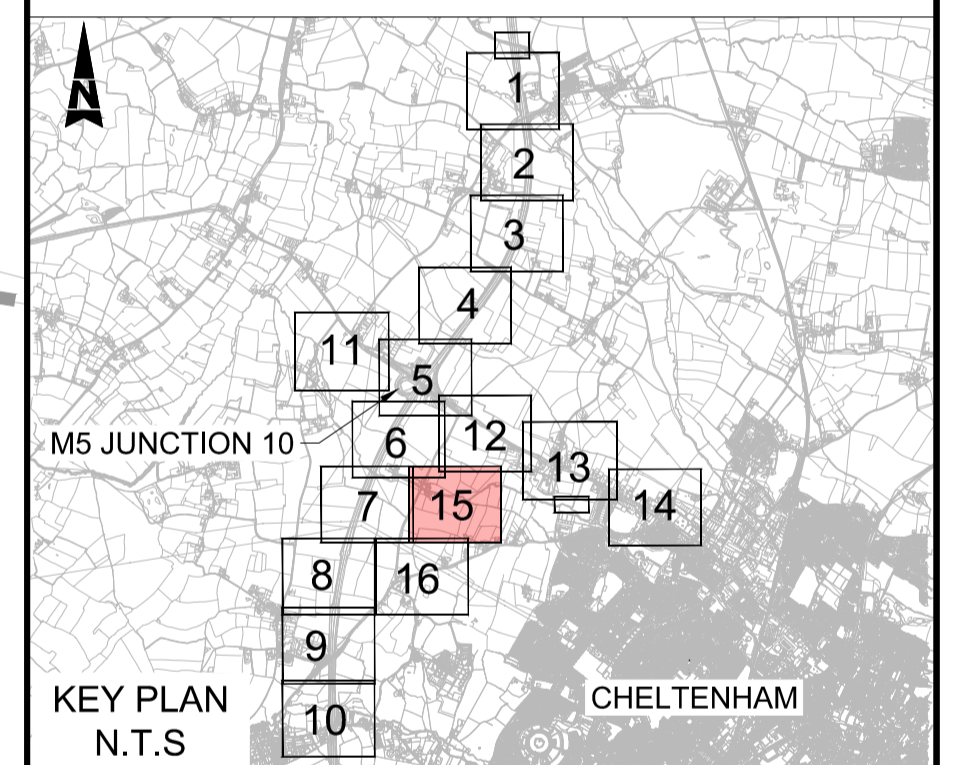
Description						
Status	Revision	Drawn	Checked	Reviewed	Authorised	Issue Date
Description						
Status	Revision	Drawn	Checked	Reviewed	Authorised	Issue Date
Description						
Status	Revision	Drawn	Checked	Reviewed	Authorised	Issue Date
Description						
Status	Revision	Drawn	Checked	Reviewed	Authorised	Issue Date
Description						
FIRST SUBMISSION						
Status	Revision	Drawn	Checked	Reviewed	Authorised	Issue Date
A1	C01	NKRP	CJ	HC	BM	18/10/23
Drawing Suitability						Status
APPROVED - PUBLISHED						A1
Project Title						
M5 Junction 10 Improvements Scheme						
Drawing Title						
GENERAL ARRANGEMENT PLANS REGULATION 5(2)(o) SHEET 14 OF 16						
Drawing Number						
TR010063/APP/2.9						
Original Size:	A1	Scale:	1:1250	Project Ref. No.:	5197035	Sheet: 14 of 16
						Rev: C01

This map is based on Ordnance Survey material with the permission of Ordnance Survey on behalf of the Controller of His Majesty's Stationery Office. You are not permitted to copy, sub-license, distribute or sell any of this data to third parties in any form. © Crown Copyright and database rights 2023, Ordnance Survey 100019134.

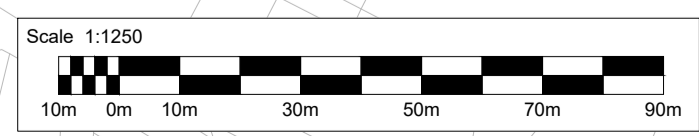
Scale 1:1250



- NOTES:**
1. THESE PLANS SHOULD BE READ IN CONJUNCTION WITH TR010063/APP/2.9 KEY PLAN AND TR010063/APP/2.9 KEY LEGEND.
 2. THESE PLANS SHOULD BE READ IN CONJUNCTION WITH THE DEVELOPMENT CONSENT ORDER AND OTHER APPLICATION PLANS.



Description						
Status	Revision	Drawn	Checked	Reviewed	Authorised	Issue Date
Description						
Status	Revision	Drawn	Checked	Reviewed	Authorised	Issue Date
Description						
Status	Revision	Drawn	Checked	Reviewed	Authorised	Issue Date
Description						
Status	Revision	Drawn	Checked	Reviewed	Authorised	Issue Date
Description						
FIRST SUBMISSION						
Status	Revision	Drawn	Checked	Reviewed	Authorised	Issue Date
A1	C01	NKRP	CJ	HC	BM	18/10/23
Drawing Suitability						Status
APPROVED - PUBLISHED						A1
Project Title						
M5 Junction 10 Improvements Scheme						
Drawing Title						
GENERAL ARRANGEMENT PLANS REGULATION 5(2)(o) SHEET 15 OF 16						
Drawing Number						
TR010063/APP/2.9						
Original Size:	A1	Scale:	1:1250	Project Ref. No.:	5197035	Sheet: 15 of 16
						Rev: C01



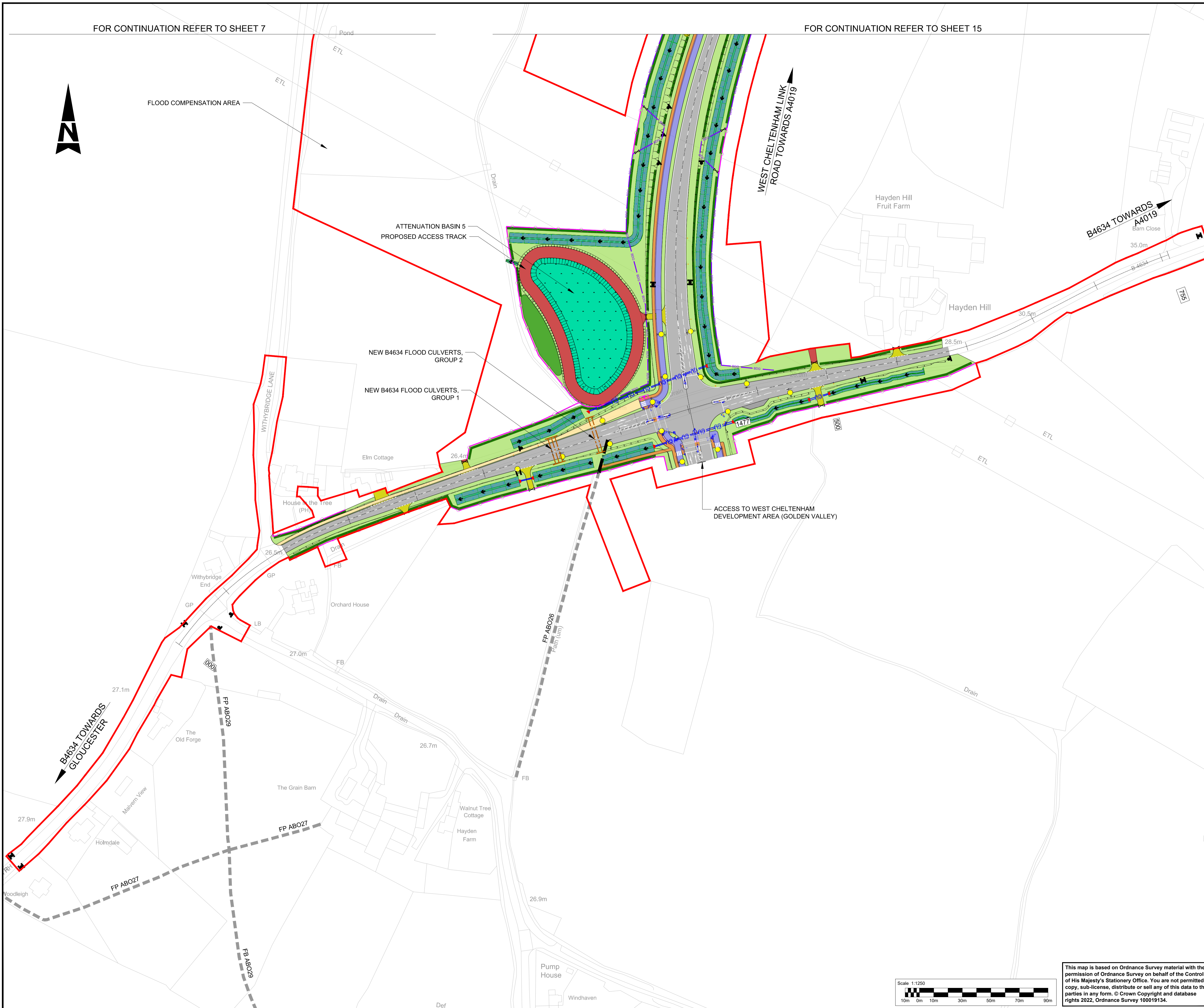
This map is based on Ordnance Survey material with the permission of Ordnance Survey on behalf of the Controller of His Majesty's Stationery Office. You are not permitted to copy, sub-license, distribute or sell any of this data to third parties in any form. © Crown Copyright and database rights 2022, Ordnance Survey 100019134.

FOR CONTINUATION REFER TO SHEET 7

FOR CONTINUATION REFER TO SHEET 15

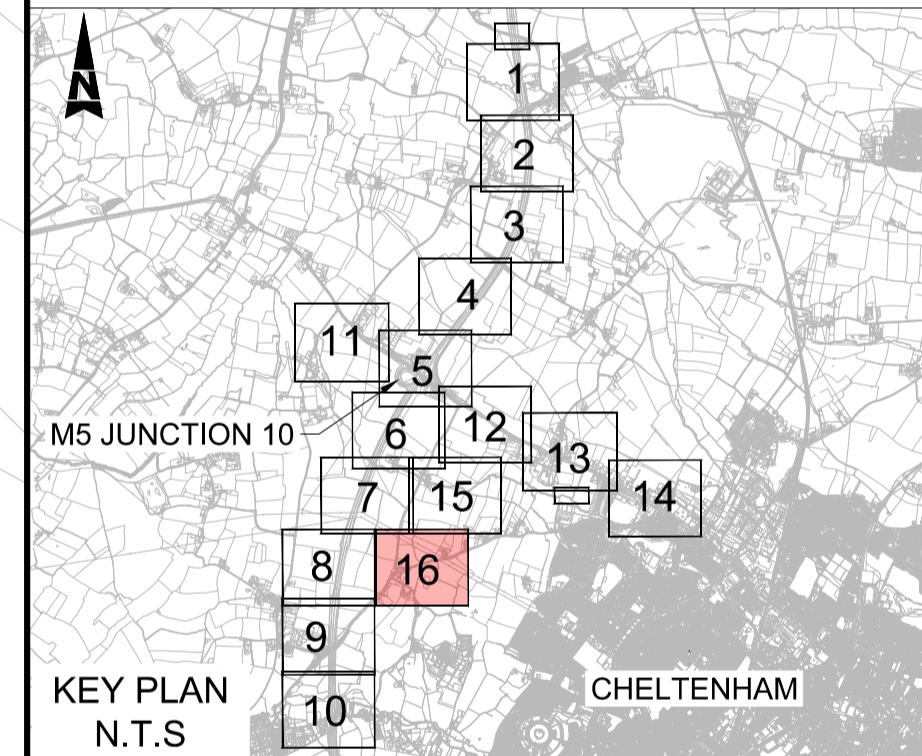


FLOOD COMPENSATION AREA



NOTES:

1. THESE PLANS SHOULD BE READ IN CONJUNCTION WITH TR010063/APP/2.9 KEY PLAN AND TR010063/APP/2.9 KEY LEGEND.
2. THESE PLANS SHOULD BE READ IN CONJUNCTION WITH THE DEVELOPMENT CONSENT ORDER AND OTHER APPLICATION PLANS.



KEY PLAN N.T.S

Description	Status	Revision	Drawn	Checked	Reviewed	Authorised	Issue Date
-------------	--------	----------	-------	---------	----------	------------	------------

Description	Status	Revision	Drawn	Checked	Reviewed	Authorised	Issue Date
-------------	--------	----------	-------	---------	----------	------------	------------

Description	Status	Revision	Drawn	Checked	Reviewed	Authorised	Issue Date
-------------	--------	----------	-------	---------	----------	------------	------------

Description	Status	Revision	Drawn	Checked	Reviewed	Authorised	Issue Date
-------------	--------	----------	-------	---------	----------	------------	------------

Description	Status	Revision	Drawn	Checked	Reviewed	Authorised	Issue Date
-------------	--------	----------	-------	---------	----------	------------	------------

Description	Status	Revision	Drawn	Checked	Reviewed	Authorised	Issue Date
-------------	--------	----------	-------	---------	----------	------------	------------

Description	Status	Revision	Drawn	Checked	Reviewed	Authorised	Issue Date
-------------	--------	----------	-------	---------	----------	------------	------------

Description	Status	Revision	Drawn	Checked	Reviewed	Authorised	Issue Date
-------------	--------	----------	-------	---------	----------	------------	------------

Description	Status	Revision	Drawn	Checked	Reviewed	Authorised	Issue Date
-------------	--------	----------	-------	---------	----------	------------	------------

Description	Status	Revision	Drawn	Checked	Reviewed	Authorised	Issue Date
-------------	--------	----------	-------	---------	----------	------------	------------

Description	Status	Revision	Drawn	Checked	Reviewed	Authorised	Issue Date
-------------	--------	----------	-------	---------	----------	------------	------------

Description	Status	Revision	Drawn	Checked	Reviewed	Authorised	Issue Date
-------------	--------	----------	-------	---------	----------	------------	------------

Description	Status	Revision	Drawn	Checked	Reviewed	Authorised	Issue Date
-------------	--------	----------	-------	---------	----------	------------	------------

Description	Status	Revision	Drawn	Checked	Reviewed	Authorised	Issue Date
-------------	--------	----------	-------	---------	----------	------------	------------

Description	Status	Revision	Drawn	Checked	Reviewed	Authorised	Issue Date
-------------	--------	----------	-------	---------	----------	------------	------------

Description	Status	Revision	Drawn	Checked	Reviewed	Authorised	Issue Date
-------------	--------	----------	-------	---------	----------	------------	------------

Description	Status	Revision	Drawn	Checked	Reviewed	Authorised	Issue Date
-------------	--------	----------	-------	---------	----------	------------	------------

Description	Status	Revision	Drawn	Checked	Reviewed	Authorised	Issue Date
-------------	--------	----------	-------	---------	----------	------------	------------

Description	Status	Revision	Drawn	Checked	Reviewed	Authorised	Issue Date
-------------	--------	----------	-------	---------	----------	------------	------------

Description	Status	Revision	Drawn	Checked	Reviewed	Authorised	Issue Date
-------------	--------	----------	-------	---------	----------	------------	------------

Description	Status	Revision	Drawn	Checked	Reviewed	Authorised	Issue Date
-------------	--------	----------	-------	---------	----------	------------	------------

Description	Status	Revision	Drawn	Checked	Reviewed	Authorised	Issue Date
-------------	--------	----------	-------	---------	----------	------------	------------

Description	Status	Revision	Drawn	Checked	Reviewed	Authorised	Issue Date
-------------	--------	----------	-------	---------	----------	------------	------------

Description	Status	Revision	Drawn	Checked	Reviewed	Authorised	Issue Date
APPROVED - PUBLISHED	A1						

Project Title

M5 Junction 10 Improvements Scheme

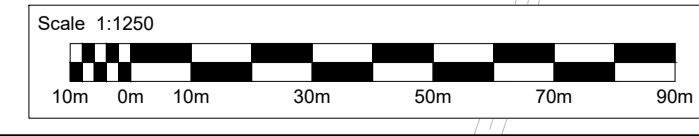
Drawing Title

GENERAL ARRANGEMENT PLANS
REGULATION 5(2)(o)
SHEET 16 OF 16

Drawing Number

TR010063/APP/2.9

Original Scale:	A1	Scale:	1:1250	Project Ref. No.:	5197035	Sheet:	16 of 16	Rev.:	C01
-----------------	----	--------	--------	-------------------	---------	--------	----------	-------	-----



This map is based on Ordnance Survey material with the permission of Ordnance Survey on behalf of the Controller of His Majesty's Stationery Office. You are not permitted to copy, sub-license, distribute or sell any of this data to third parties in any form. © Crown Copyright and database rights 2022, Ordnance Survey 100019134.

ATKINS

Member of the SNC-Lavalin Group

5th Floor, Block 5
Shire Hall
Bearland
Gloucester
GL1 2TH