

M5 Junction 10 Improvements Scheme

Historic Environment Sites and Features Plan - Designated Receptors - Part 2 of 2 TR010063 - APP 2.12

Regulation 5 (2) (m)

Planning Act 2008

Infrastructure Planning (Applications: Prescribed Forms and Procedure) Regulations 2009

Volume 2

December 2023

THIS PAGE IS LEFT INTENTIONALLY BLANK

**Infrastructure Planning
Planning Act 2008**

**The Infrastructure Planning (Applications:
Prescribed Forms and Procedure)
Regulations 2009**

**M5 Junction 10 Improvements Scheme
Development Consent Order 202[X]**

**Historic Environment Sites and Features Plan
- Designated Receptors - Part 2 of 2**

Regulation Number:	Regulation 5 (2) (m)
Planning Inspectorate Scheme Reference	TR010063
Application Document Reference	TR010063 – APP 2.12
Author:	M5 Junction 10 Improvements Scheme Project Team

Version	Date	Status of Version
Rev 0	December 2023	DCO Application

Table of contents

Chapter	Page
1. Schedule of Plans included in the application	5
1.1. List of drawings in Part 1	5
1.2. List of drawings in Part 2	6

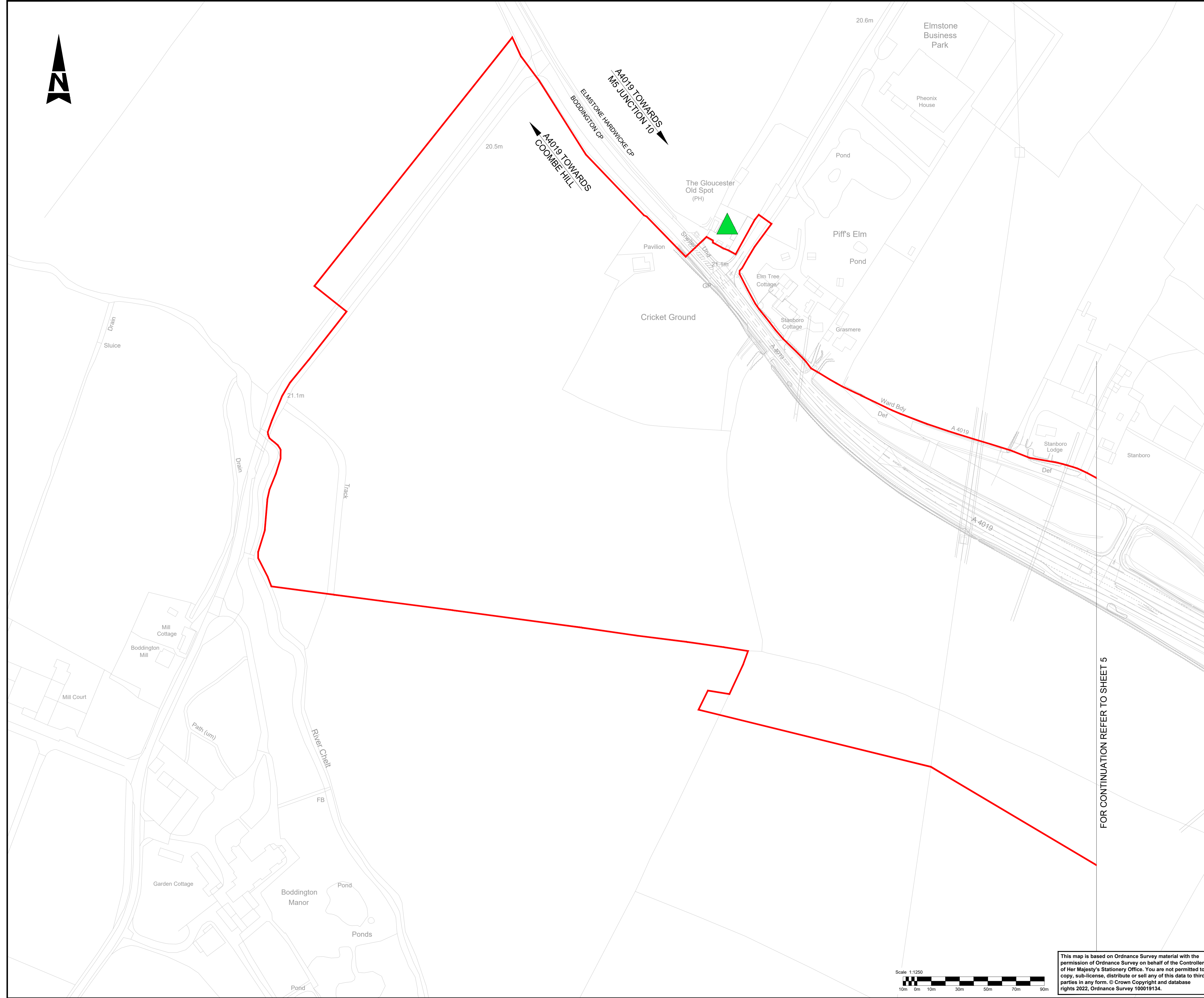
1. Schedule of Plans included in the application

1.1. List of drawings in Part 1

Document Title	Document Number	Revision
Historic Environment Sites and Features Plans Designated Receptors - Key Plan	TR010063 – APP 2.12	C01
Historic Environment Sites and Features Plans Designated Receptors – Sheet 1 of 16	TR010063 – APP 2.12	C01
Historic Environment Sites and Features Plans Designated Receptors – Sheet 2 of 16	TR010063 – APP 2.12	C01
Historic Environment Sites and Features Plans Designated Receptors – Sheet 3 of 16	TR010063 – APP 2.12	C01
Historic Environment Sites and Features Plans Designated Receptors – Sheet 4 of 16	TR010063 – APP 2.12	C01
Historic Environment Sites and Features Plans Designated Receptors – Sheet 5 of 16	TR010063 – APP 2.12	C01
Historic Environment Sites and Features Plans Designated Receptors – Sheet 6 of 16	TR010063 – APP 2.12	C01
Historic Environment Sites and Features Plans Designated Receptors – Sheet 7 of 16	TR010063 – APP 2.12	C01
Historic Environment Sites and Features Plans Designated Receptors – Sheet 8 of 16	TR010063 – APP 2.12	C01
Historic Environment Sites and Features Plans Designated Receptors – Sheet 9 of 16	TR010063 – APP 2.12	C01
Historic Environment Sites and Features Plans Designated Receptors – Sheet 10 of 16	TR010063 – APP 2.12	C01

1.2. List of drawings in Part 2

Document Title	Document Number	Revision
Historic Environment Sites and Features Plans Designated Receptors – Sheet 11 of 16	TR010063 – APP 2.12	C01
Historic Environment Sites and Features Plans Designated Receptors – Sheet 12 of 16	TR010063 – APP 2.12	C01
Historic Environment Sites and Features Plans Designated Receptors – Sheet 13 of 16	TR010063 – APP 2.12	C01
Historic Environment Sites and Features Plans Designated Receptors – Sheet 14 of 16	TR010063 – APP 2.12	C01
Historic Environment Sites and Features Plans Designated Receptors – Sheet 15 of 16	TR010063 – APP 2.12	C01
Historic Environment Sites and Features Plans Designated Receptors – Sheet 16 of 16	TR010063 – APP 2.12	C01



NOTES:

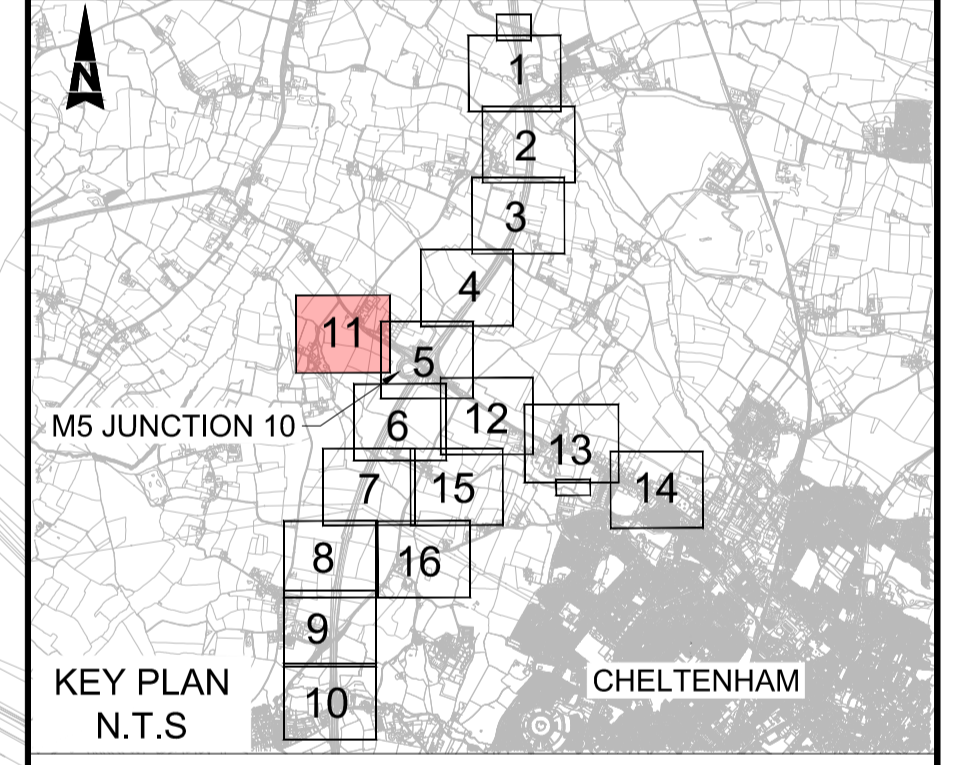
1. ALL DIMENSIONS ARE IN METRES UNLESS OTHERWISE STATED.
2. THE WORKS PLANS SHOULD BE READ IN CONJUNCTION WITH THE DEVELOPMENT CONSENT ORDER.

KEY

- DEVELOPMENT CONSENT ORDER (DCO) BOUNDARY
- ▭ SCHEDULED MONUMENT
- ▭ CONSERVATION AREA

LISTED BUILDING

- ▲ GRADE I
- ▲ GRADE II
- ▲ GRADE II*



FOR CONTINUATION REFER TO SHEET 5

Description	Status	Revision	Drawn	Checked	Reviewed	Authorised	Issue Date
Description							
Description							
Description							
Description							

REVISION 0							
Status	Revision	Drawn	Checked	Reviewed	Authorised	Issue Date	
A1	C01	AC	SS	CDC	BM	04/12/23	

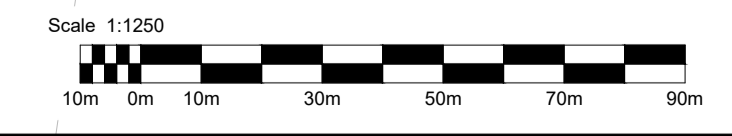
Drawing Suitability: APPROVED - PUBLISHED Status: A1

Project Title: M5 Junction 10 Improvements Scheme

Drawing Title: HISTORIC ENVIRONMENT SITES AND FEATURES PLAN - DESIGNATED RECEPTORS
SHEET 11 of 16

Drawing Number: GCCM5J10 ATK EHR ZZ DR LH 000031

Original Size: A1 Scale: AS SHOWN Project Ref. No.: 5197035 Sheet: 11 of 16 Rev: C01

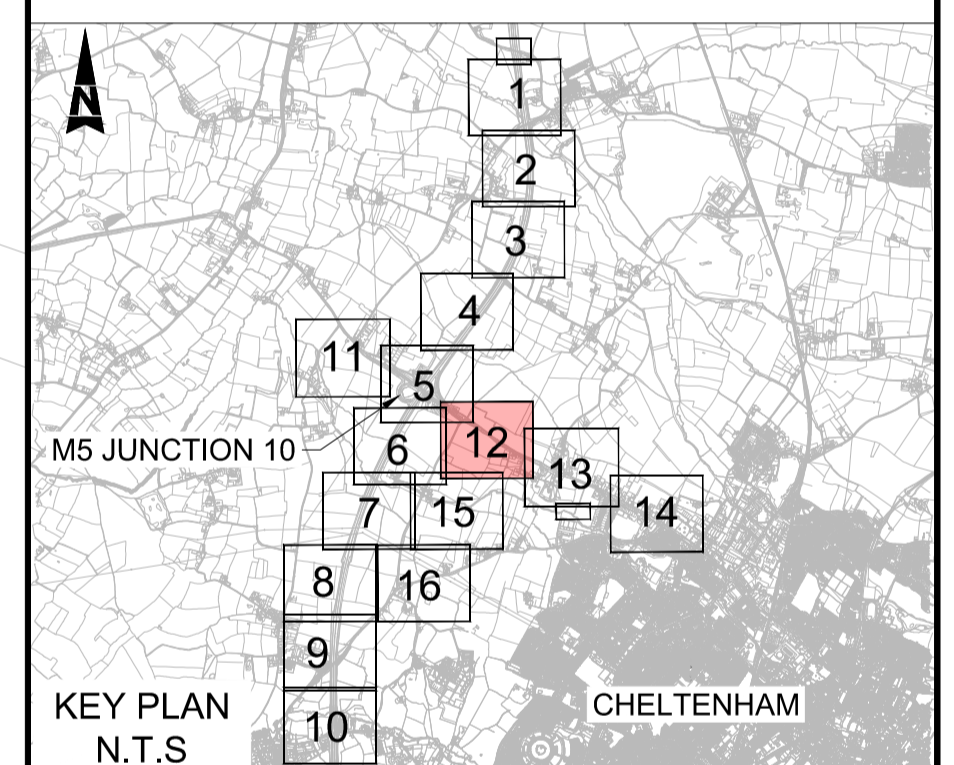


This map is based on Ordnance Survey material with the permission of Ordnance Survey on behalf of the Controller of Her Majesty's Stationary Office. You are not permitted to copy, sub-license, distribute or sell any of this data to third parties in any form. © Crown Copyright and database rights 2022, Ordnance Survey 100019134.



- NOTES:**
- ALL DIMENSIONS ARE IN METRES UNLESS OTHERWISE STATED.
 - THE WORKS PLANS SHOULD BE READ IN CONJUNCTION WITH THE DEVELOPMENT CONSENT ORDER.

- KEY**
- DEVELOPMENT CONSENT ORDER (DCO) BOUNDARY
 - SCHEDULED MONUMENT
 - CONSERVATION AREA
- LISTED BUILDING**
- GRADE I
 - GRADE II
 - GRADE II*



Description						
Status	Revision	Drawn	Checked	Reviewed	Authorised	Issue Date
Description						
Status	Revision	Drawn	Checked	Reviewed	Authorised	Issue Date
Description						
Status	Revision	Drawn	Checked	Reviewed	Authorised	Issue Date
Description						
Status	Revision	Drawn	Checked	Reviewed	Authorised	Issue Date
Description						
REVISION 0						
Status	Revision	Drawn	Checked	Reviewed	Authorised	Issue Date
A1	C01	AC	SS	CDC	BM	04/12/23
Drawing Suitability					Status	
APPROVED - PUBLISHED					A1	

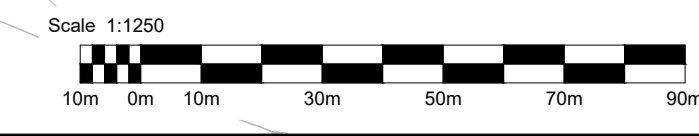
Project Title
M5 Junction 10 Improvements Scheme

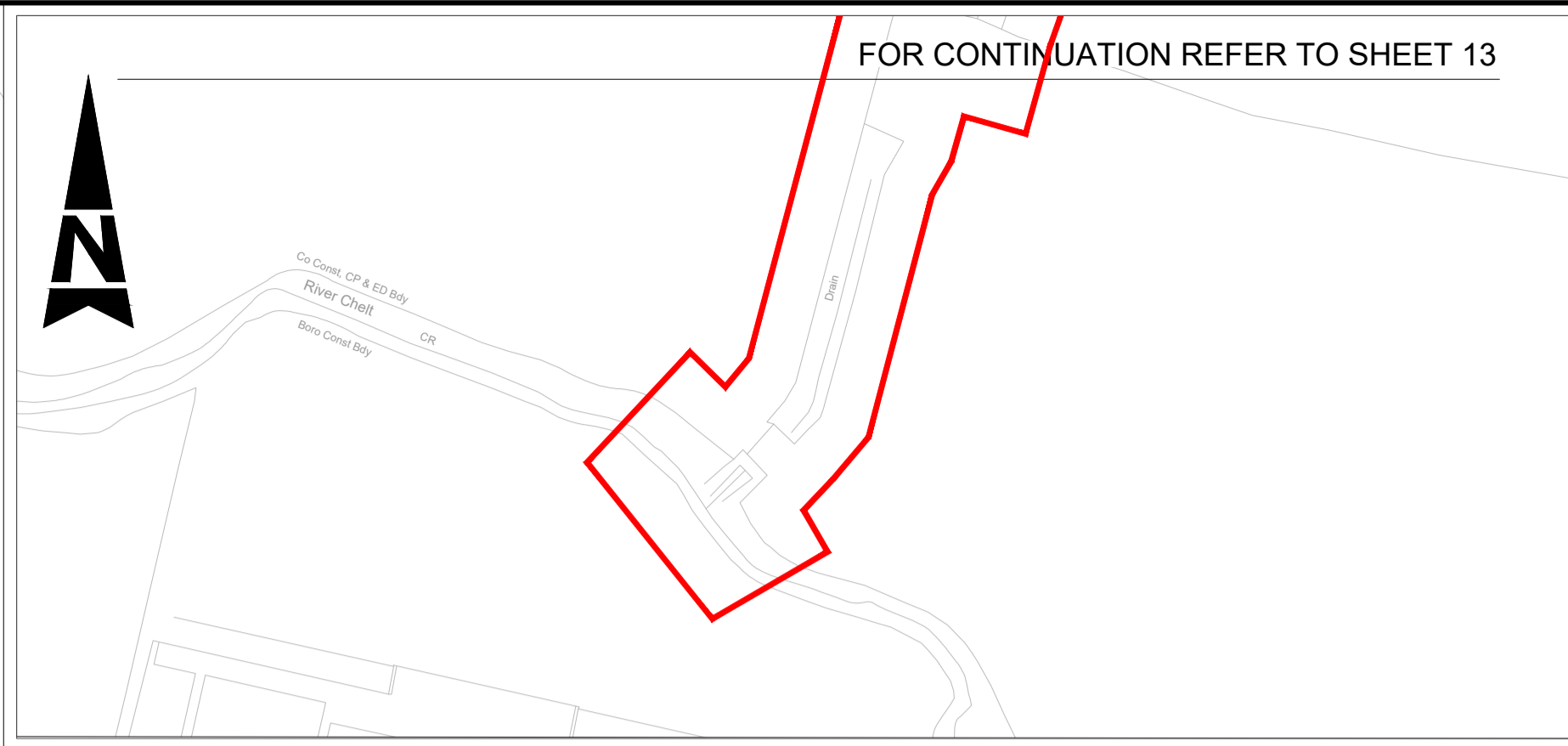
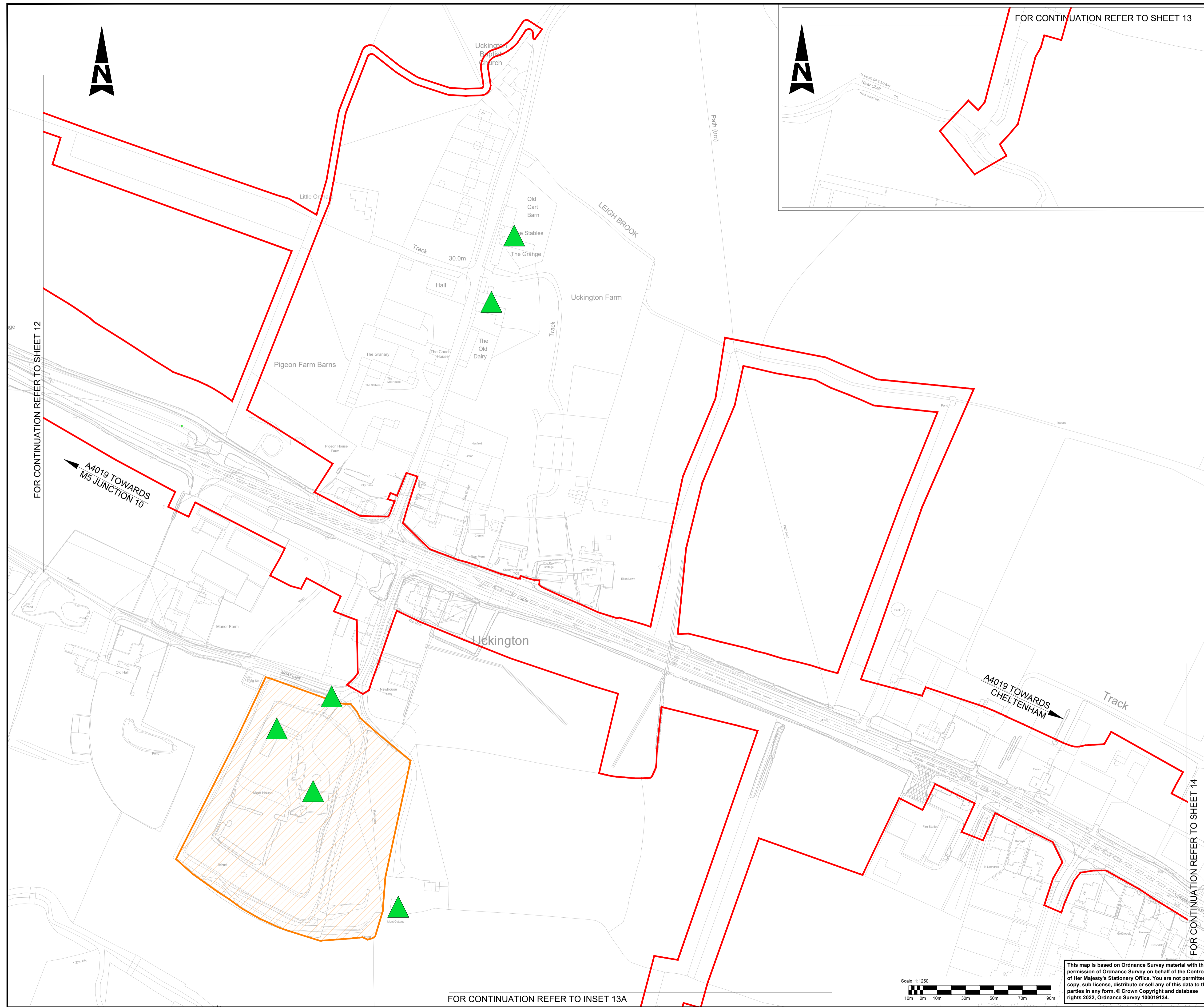
Drawing Title
HISTORIC ENVIRONMENT SITES AND FEATURES PLAN - DESIGNATED RECEPTORS

SHEET 12 of 16

Drawing Number		Project Ref. No.		Sheet		Rev.	
GCCM5J10	ATK	EHR	5197035	12 of 16	C01		
ZZ	DR	LH	000032				

This map is based on Ordnance Survey material with the permission of Ordnance Survey on behalf of the Controller of Her Majesty's Stationary Office. You are not permitted to copy, sub-license, distribute or sell any of this data to third parties in any form. © Crown Copyright and database rights 2022, Ordnance Survey 100019134.

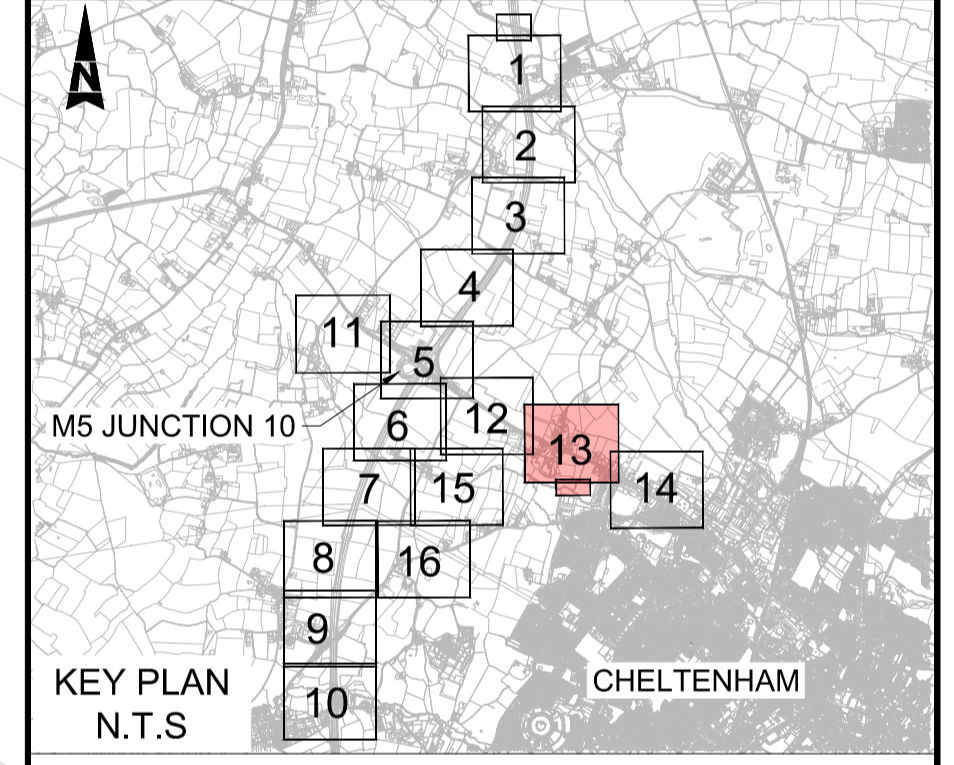




- NOTES:**
- ALL DIMENSIONS ARE IN METRES UNLESS OTHERWISE STATED.
 - THE WORKS PLANS SHOULD BE READ IN CONJUNCTION WITH THE DEVELOPMENT CONSENT ORDER.

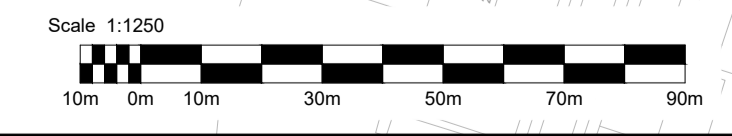
- KEY**
- DEVELOPMENT CONSENT ORDER (DCO) BOUNDARY
 - SCHEDULED MONUMENT
 - CONSERVATION AREA

- LISTED BUILDING**
- GRADE I
 - GRADE II
 - GRADE II*

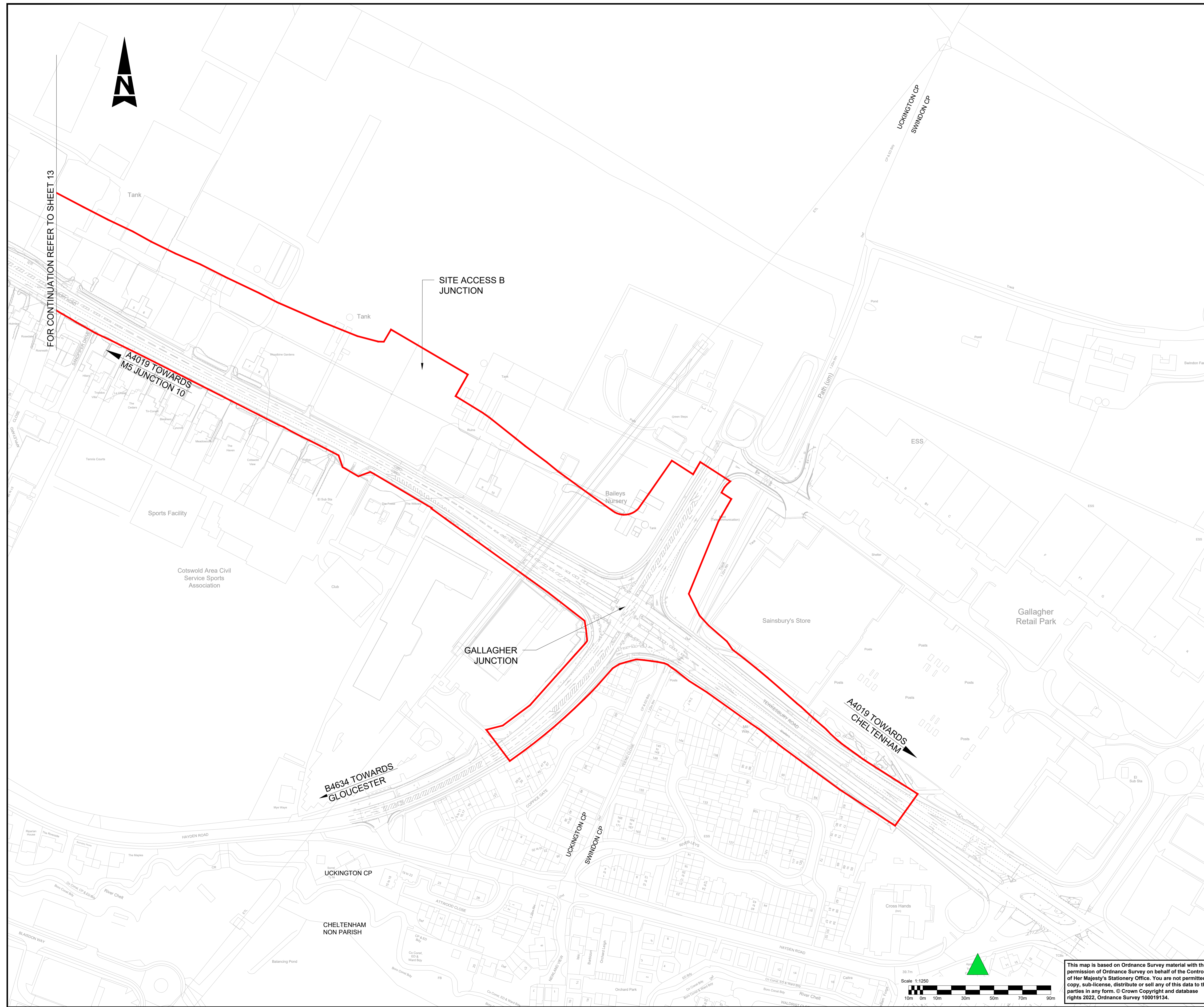


Description							
Status	Revision	Drawn	Checked	Reviewed	Authorised	Issue Date	
Description							
Status	Revision	Drawn	Checked	Reviewed	Authorised	Issue Date	
Description							
Status	Revision	Drawn	Checked	Reviewed	Authorised	Issue Date	
Description							
REVISION 0							
Status	Revision	Drawn	Checked	Reviewed	Authorised	Issue Date	
A1	C01	AC	SS	CDC	BM	04/12/23	
Drawing Suitability						Status	
APPROVED - PUBLISHED						A1	
Project Title							
M5 Junction 10 Improvements Scheme							
Drawing Title							
HISTORIC ENVIRONMENT SITES AND FEATURES PLAN - DESIGNATED RECEPTORS							
SHEET 13 of 16							
Drawing Number							
GCCM5J10		ATK		EHR		ZZ DR LH 000033	
Original Size	A1	Scale	AS SHOWN	Project Ref. No.	5197035	Sheet	13 of 16
				Rev.	C01		

FOR CONTINUATION REFER TO INSET 13A



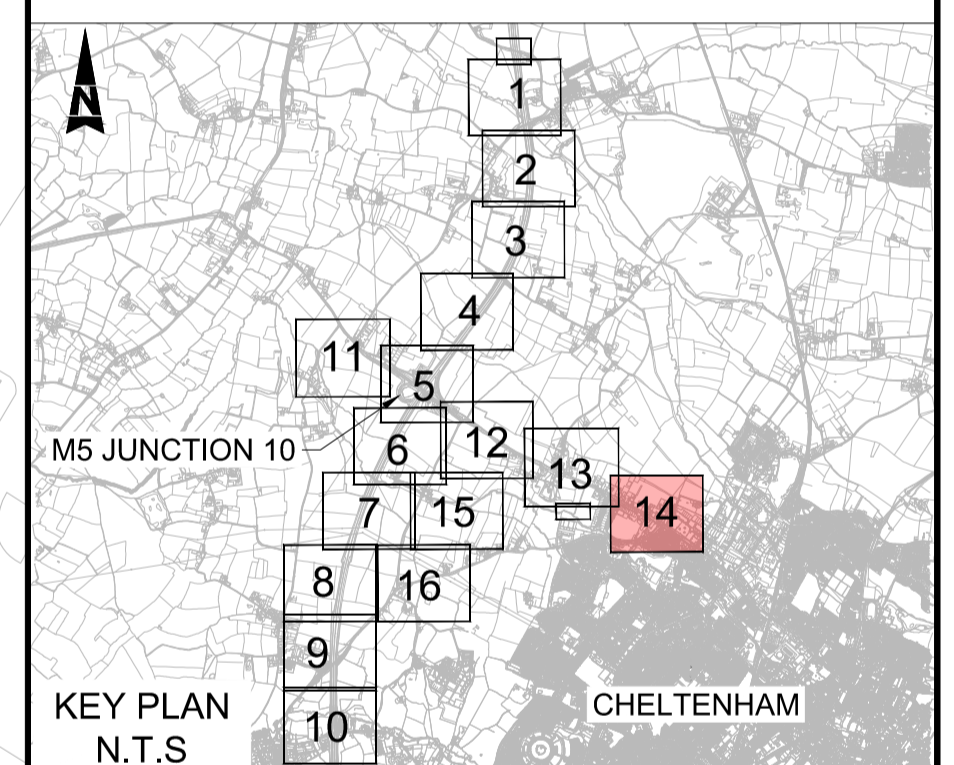
This map is based on Ordnance Survey material with the permission of Ordnance Survey on behalf of the Controller of Her Majesty's Stationary Office. You are not permitted to copy, sub-license, distribute or sell any of this data to third parties in any form. © Crown Copyright and database rights 2022, Ordnance Survey 100019134.



- NOTES:**
- ALL DIMENSIONS ARE IN METRES UNLESS OTHERWISE STATED.
 - THE WORKS PLANS SHOULD BE READ IN CONJUNCTION WITH THE DEVELOPMENT CONSENT ORDER.

- KEY**
- DEVELOPMENT CONSENT ORDER (DCO) BOUNDARY
 - SCHEDULED MONUMENT
 - CONSERVATION AREA

- LISTED BUILDING**
- GRADE I
 - GRADE II
 - GRADE II*



Description							
Status	Revision	Drawn	Checked	Reviewed	Authorised	Issue Date	
Description							
Status	Revision	Drawn	Checked	Reviewed	Authorised	Issue Date	
Description							
Status	Revision	Drawn	Checked	Reviewed	Authorised	Issue Date	
Description							
Status	Revision	Drawn	Checked	Reviewed	Authorised	Issue Date	
Description							
REVISION 0							
Status	Revision	Drawn	Checked	Reviewed	Authorised	Issue Date	
A1	C01	AC	SS	CDC	BM	04/12/23	
Drawing Suitability						Status	
APPROVED - PUBLISHED						A1	

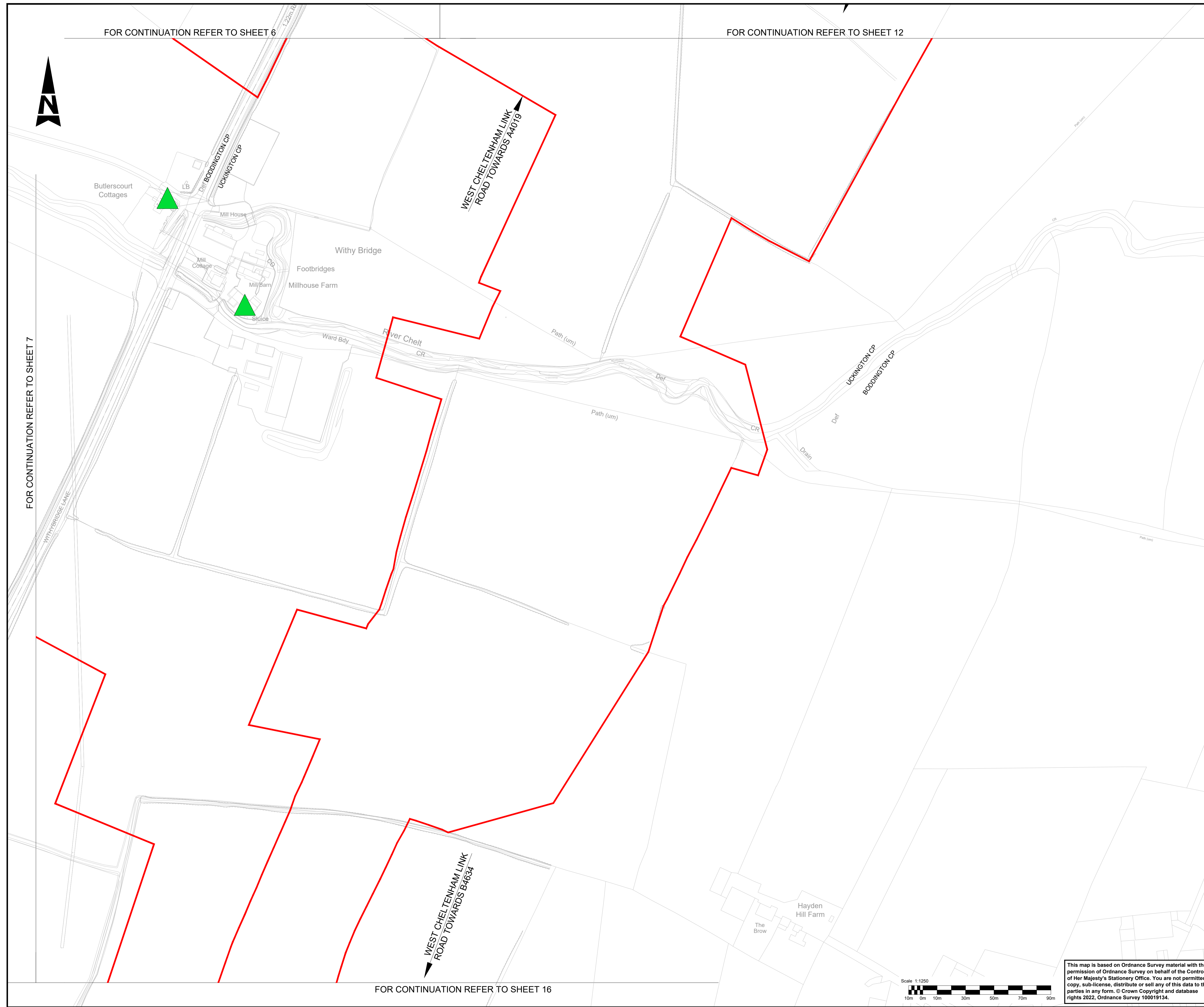
Project Title
M5 Junction 10 Improvements Scheme

Drawing Title
HISTORIC ENVIRONMENT SITES AND FEATURES PLAN - DESIGNATED RECEPTORS

SHEET 14 of 16

Drawing Number			
GCCM5J10	ATK	EHR	
ZZ	DR	LH	000034
Original Size: A1	Scale: AS SHOWN	Project Ref. No.: 5197035	Sheet: 14 of 16 Rev: C01

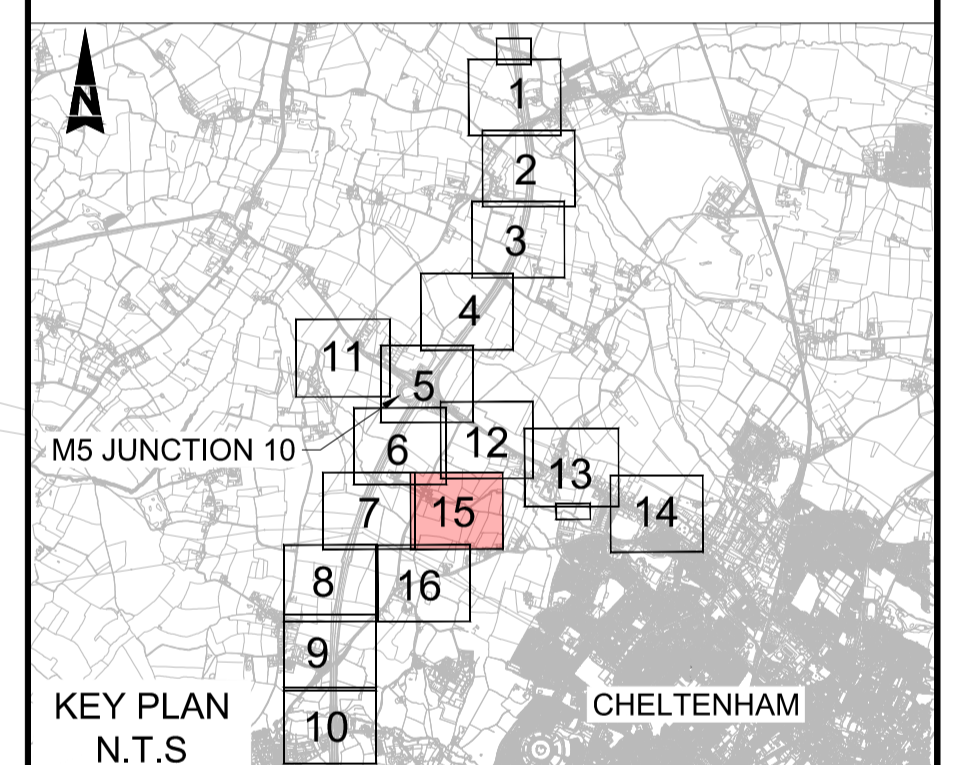
This map is based on Ordnance Survey material with the permission of Ordnance Survey on behalf of the Controller of Her Majesty's Stationary Office. You are not permitted to copy, sub-license, distribute or sell any of this data to third parties in any form. © Crown Copyright and database rights 2022, Ordnance Survey 100019134.



- NOTES:**
- ALL DIMENSIONS ARE IN METRES UNLESS OTHERWISE STATED.
 - THE WORKS PLANS SHOULD BE READ IN CONJUNCTION WITH THE DEVELOPMENT CONSENT ORDER.

- KEY**
- DEVELOPMENT CONSENT ORDER (DCO) BOUNDARY
 - SCHEDULED MONUMENT
 - CONSERVATION AREA

- LISTED BUILDING**
- GRADE I
 - GRADE II
 - GRADE II*



Description						
Status	Revision	Drawn	Checked	Reviewed	Authorised	Issue Date
Description						
Description						
Description						
REVISION 0						
Status	Revision	Drawn	Checked	Reviewed	Authorised	Issue Date
A1	C01	AC	SS	CDC	BM	04/12/23
Drawing Suitability						Status
APPROVED - PUBLISHED						A1

Project Title
M5 Junction 10 Improvements Scheme

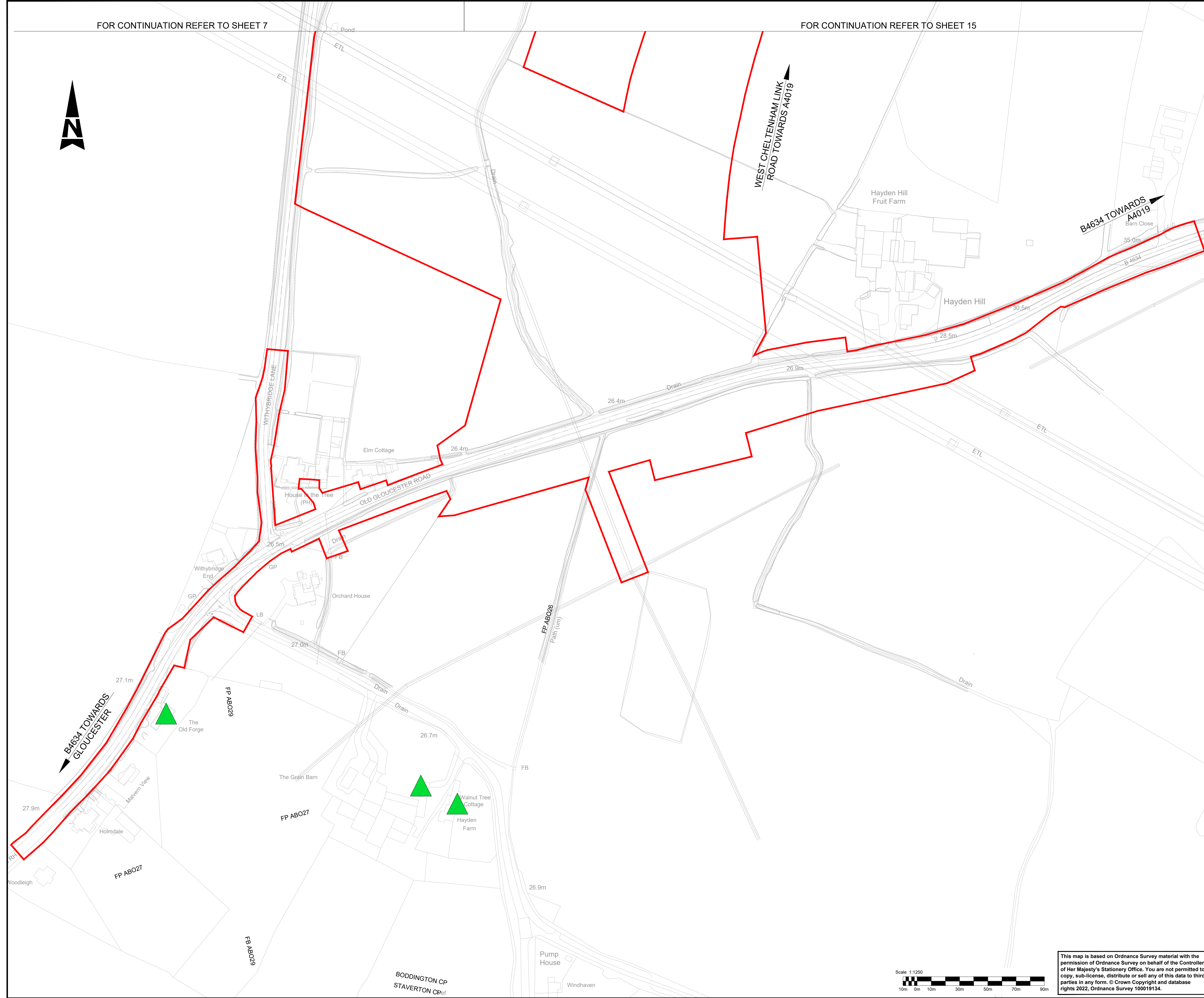
Drawing Title
HISTORIC ENVIRONMENT SITES AND FEATURES PLAN - DESIGNATED RECEPTORS

SHEET 15 of 16

Drawing Number	GCCM5J10	ATK	EHR
	ZZ	DR	LH 000035
Original Size	A1	Scale	AS SHOWN
Project Ref. No.	5197035	Sheet	15 of 16
Rev.	C01		

FOR CONTINUATION REFER TO SHEET 7

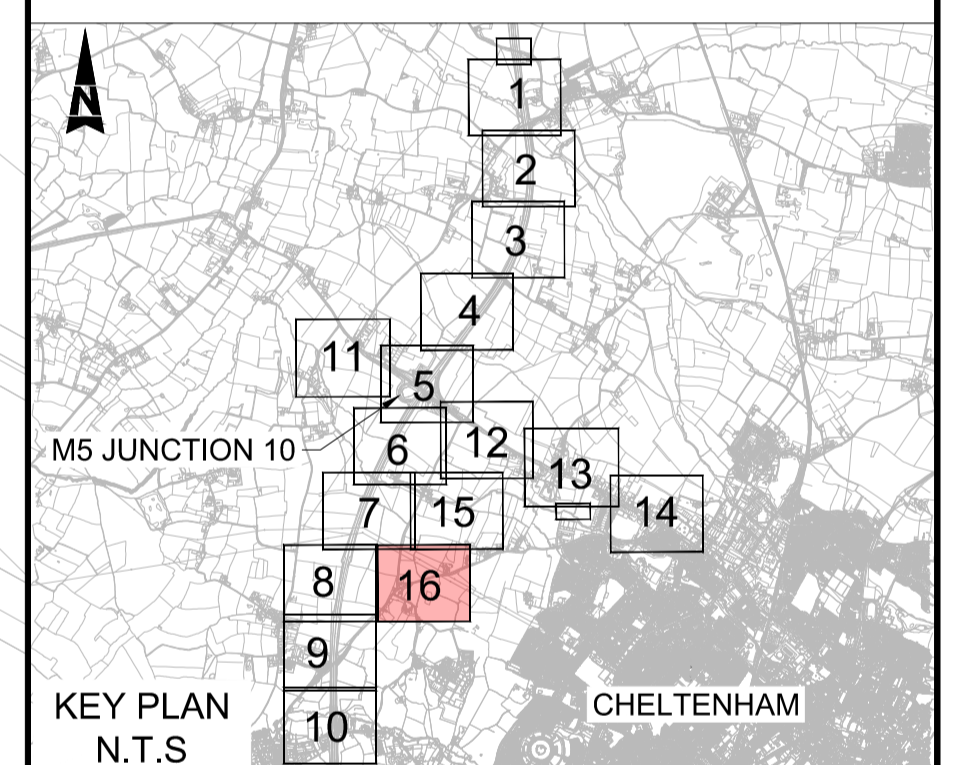
FOR CONTINUATION REFER TO SHEET 15



- NOTES:**
1. ALL DIMENSIONS ARE IN METRES UNLESS OTHERWISE STATED.
 2. THE WORKS PLANS SHOULD BE READ IN CONJUNCTION WITH THE DEVELOPMENT CONSENT ORDER.

- KEY**
- DEVELOPMENT CONSENT ORDER (DCO) BOUNDARY
 - ▨ SCHEDULED MONUMENT
 - ▨ CONSERVATION AREA

- LISTED BUILDING**
- ▲ GRADE I
 - ▲ GRADE II
 - ▲ GRADE II*



Description						
Status	Revision	Drawn	Checked	Reviewed	Authorised	Issue Date
Description						
Description						
Description						
REVISION 0						
A1	C01	AC	SS	CDC	BM	04/12/23
Drawing Suitability						Status
APPROVED - PUBLISHED						A1

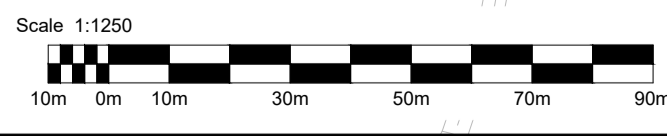
Project Title
M5 Junction 10 Improvements Scheme

Drawing Title
HISTORIC ENVIRONMENT SITES AND FEATURES PLAN - DESIGNATED RECEPTORS

SHEET 16 of 16

Original Size: A1	Scale: AS SHOWN	Project Ref. No.: 5197035	Sheet: 16 of 16	Rev: C01
--------------------------	------------------------	----------------------------------	------------------------	-----------------

This map is based on Ordnance Survey material with the permission of Ordnance Survey on behalf of the Controller of Her Majesty's Stationary Office. You are not permitted to copy, sub-license, distribute or sell any of this data to third parties in any form. © Crown Copyright and database rights 2022, Ordnance Survey 100019134.



5th Floor, Block 5
Shire Hall
Bearland
Gloucester
GL1 2TH