

M5 Junction 10 Improvements Scheme

Historic Environment Sites and Features Plan - Non Designated Receptors - Ridge and Furrow - Part 1 of 2 TR010063 - APP 2.12

Regulation 5 (2) (m)

Planning Act 2008

Infrastructure Planning (Applications: Prescribed Forms and Procedure) Regulations 2009

Volume 2

December 2023

THIS PAGE IS LEFT INTENTIONALLY BLANK

**Infrastructure Planning
Planning Act 2008**

**The Infrastructure Planning (Applications:
Prescribed Forms and Procedure)
Regulations 2009**

**M5 Junction 10 Improvements Scheme
Development Consent Order 202[X]**

**Historic Environment Sites and Features Plan - Non Designated
Receptors - Ridge and Furrow - Part 1 of 2**

Regulation Number:	Regulation 5 (2) (m)
Planning Inspectorate Scheme Reference	TR010063
Application Document Reference	TR010063 – APP 2.12
Author:	M5 Junction 10 Improvements Scheme Project Team

Version	Date	Status of Version
Rev 0	December 2023	DCO Application

Table of contents

Chapter	Page
1. Schedule of Plans included in the application	5
1.1. List of drawings in Part 1	5
1.2. List of drawings in Part 2	6

1. Schedule of Plans included in the application

1.1. List of drawings in Part 1

Document Title	Document Number	Revision
Historic Environment Sites and Features Plans - Non Designated Receptors - Ridge and Furrow – Key Plan	TR010063 – APP 2.12	C01
Historic Environment Sites and Features Plans - Non Designated Receptors - Ridge and Furrow – Sheet 1 of 16	TR010063 – APP 2.12	C01
Historic Environment Sites and Features Plans - Non Designated Receptors - Ridge and Furrow – Sheet 2 of 16	TR010063 – APP 2.12	C01
Historic Environment Sites and Features Plans - Non Designated Receptors - Ridge and Furrow – Sheet 3 of 16	TR010063 – APP 2.12	C01
Historic Environment Sites and Features Plans - Non Designated Receptors - Ridge and Furrow – Sheet 4 of 16	TR010063 – APP 2.12	C01
Historic Environment Sites and Features Plans - Non Designated Receptors - Ridge and Furrow – Sheet 5 of 16	TR010063 – APP 2.12	C01
Historic Environment Sites and Features Plans - Non Designated Receptors - Ridge and Furrow – Sheet 6 of 16	TR010063 – APP 2.12	C01
Historic Environment Sites and Features Plans - Non Designated Receptors - Ridge and Furrow – Sheet 7 of 16	TR010063 – APP 2.12	C01
Historic Environment Sites and Features Plans - Non Designated Receptors - Ridge and Furrow – Sheet 8 of 16	TR010063 – APP 2.12	C01
Historic Environment Sites and Features Plans - Non Designated Receptors - Ridge and Furrow – Sheet 9 of 16	TR010063 – APP 2.12	C01

Document Title	Document Number	Revision
Historic Environment Sites and Features Plans - Non Designated Receptors - Ridge and Furrow – Sheet 10 of 16	TR010063 – APP 2.12	C01

1.2. List of drawings in Part 2

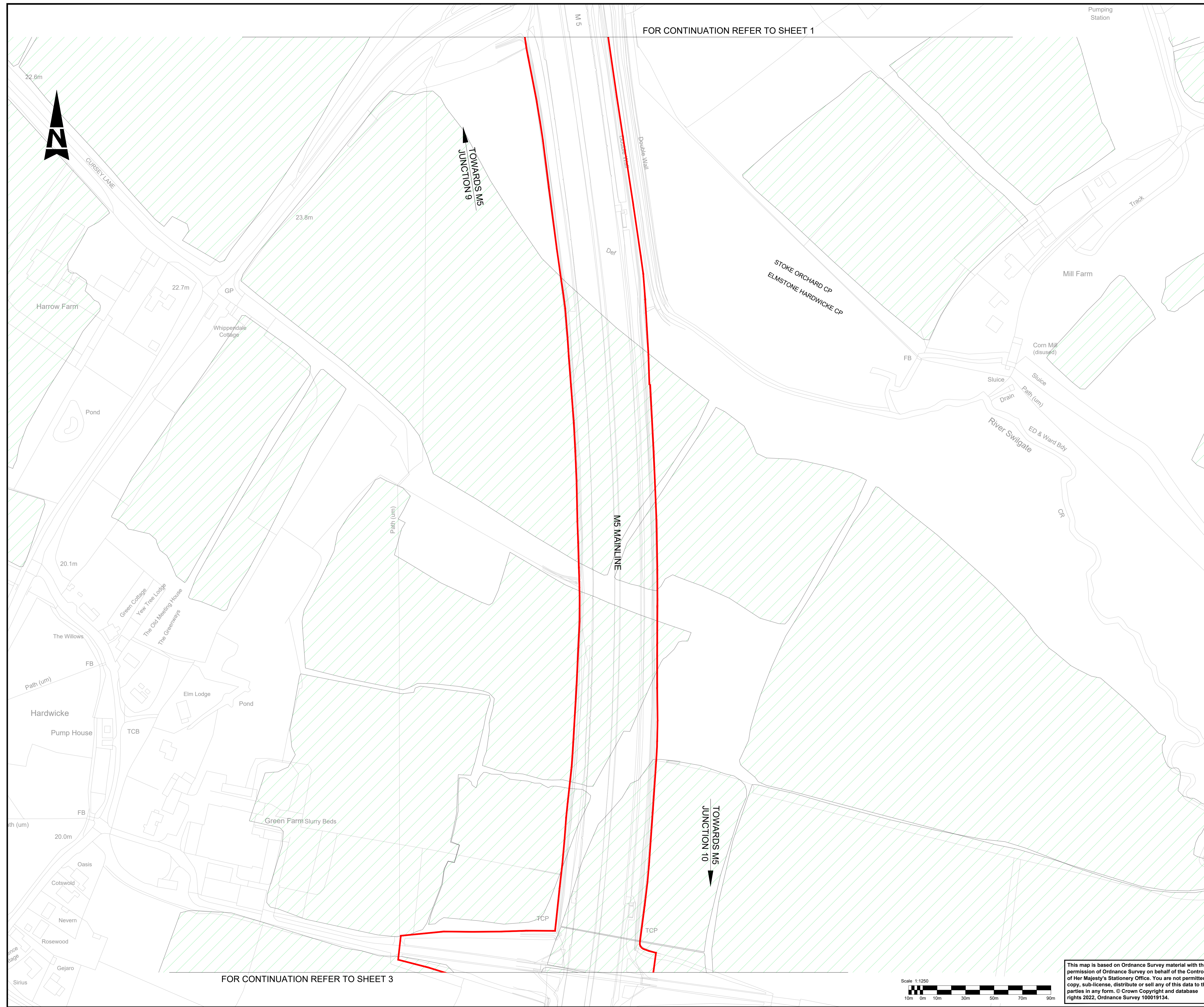
Document Title	Document Number	Revision
Historic Environment Sites and Features Plans - Non Designated Receptors - Ridge and Furrow – Sheet 11 of 16	TR010063 – APP 2.12	C01
Historic Environment Sites and Features Plans - Non Designated Receptors - Ridge and Furrow – Sheet 12 of 16	TR010063 – APP 2.12	C01
Historic Environment Sites and Features Plans - Non Designated Receptors - Ridge and Furrow – Sheet 13 of 16	TR010063 – APP 2.12	C01
Historic Environment Sites and Features Plans - Non Designated Receptors - Ridge and Furrow – Sheet 14 of 16	TR010063 – APP 2.12	C01
Historic Environment Sites and Features Plans - Non Designated Receptors Ridge and Furrow – Sheet 15 of 16	TR010063 – APP 2.12	C01
Historic Environment Sites and Features Plans - Non Designated Receptors - Ridge and Furrow – Sheet 16 of 16	TR010063 – APP 2.12	C01



- NOTES:**
1. ALL DIMENSIONS ARE IN METRES UNLESS OTHERWISE STATED.
 2. THE WORKS PLANS SHOULD BE READ IN CONJUNCTION WITH THE DEVELOPMENT CONSENT ORDER.
- KEY:**
- SHEET USED AS PART OF THIS DRAWING SERIES.
 - EXISTING ORDNANCE SURVEY DATA
 - DEVELOPMENT CONSENT ORDER (DCO) BOUNDARY
 - SCHEME EXTENT

This map is based on Ordnance Survey material with the permission of Ordnance Survey on behalf of the Controller of Her Majesty's Stationery Office. You are not permitted to copy, sub-license, distribute or sell any of this data to third parties in any form. © Crown Copyright and database rights 2022, Ordnance Survey 100019134.

Description							
Status	Revision	Drawn	Checked	Reviewed	Authorised	Issue Date	
Description							
Status	Revision	Drawn	Checked	Reviewed	Authorised	Issue Date	
Description							
Status	Revision	Drawn	Checked	Reviewed	Authorised	Issue Date	
Description							
Status	Revision	Drawn	Checked	Reviewed	Authorised	Issue Date	
REVISION 0							
A1	C01	AC	SS	CDC	BM	04/12/23	
Drawing Suitability						Status	
APPROVED - PUBLISHED						A1	
Project Title							
M5 Junction 10 Improvements Scheme							
Drawing Title							
HISTORIC ENVIRONMENT SITES AND FEATURES PLAN - NON DESIGNATED RECEPTORS RIDGE AND FURROW KEY PLAN							
Drawing Number							
GCCM5J10		ATK		EHR		ZZ DR LH 000060	
Original Size:	A1	Scale:	AS SHOWN	Project Ref. No.:	5197035	Sheet:	1 of 1
						Rev:	C01



FOR CONTINUATION REFER TO SHEET 1

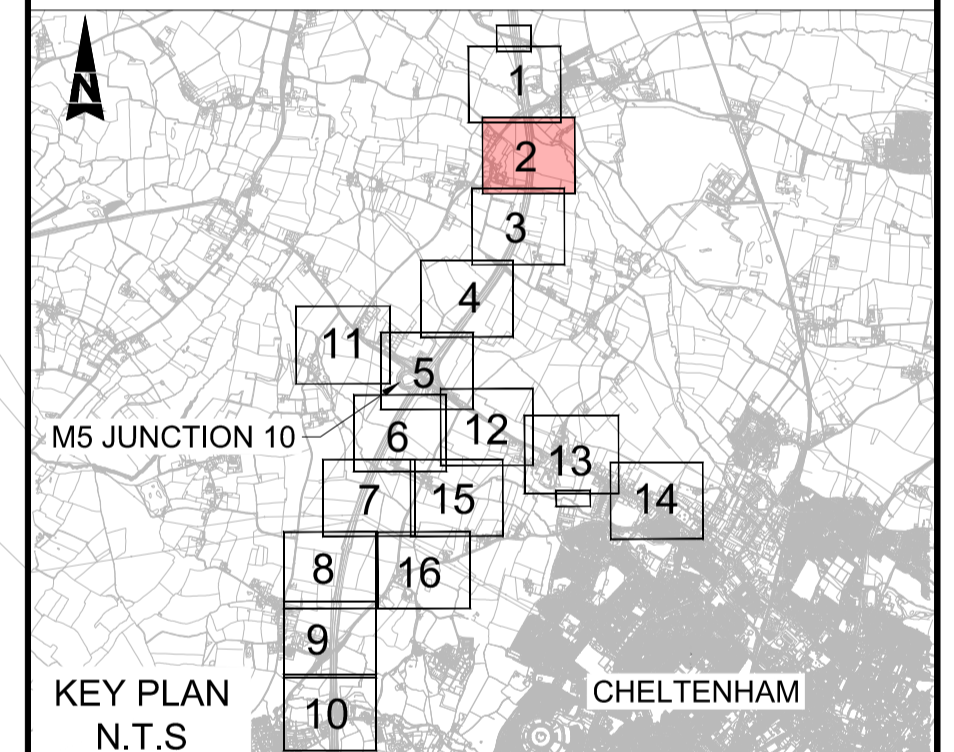
FOR CONTINUATION REFER TO SHEET 3

NOTES:

1. ALL DIMENSIONS ARE IN METRES UNLESS OTHERWISE STATED.
2. THE WORKS PLANS SHOULD BE READ IN CONJUNCTION WITH THE DEVELOPMENT CONSENT ORDER.

KEY

- DEVELOPMENT CONSENT ORDER (DCO) BOUNDARY
- ▨ RIDGE AND FURROW



Description						
Status	Revision	Drawn	Checked	Reviewed	Authorised	Issue Date
Description						
Description						
Description						
REVISION 0						
Status	Revision	Drawn	Checked	Reviewed	Authorised	Issue Date
A1	C01	AC	SS	CDC	BM	04/12/23

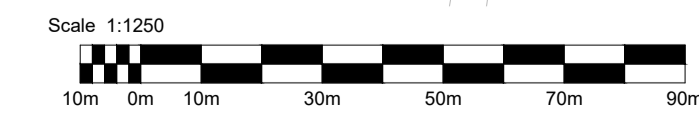
Drawing Suitability: **APPROVED - PUBLISHED** Status: **A1**

Project Title: **M5 Junction 10 Improvements Scheme**

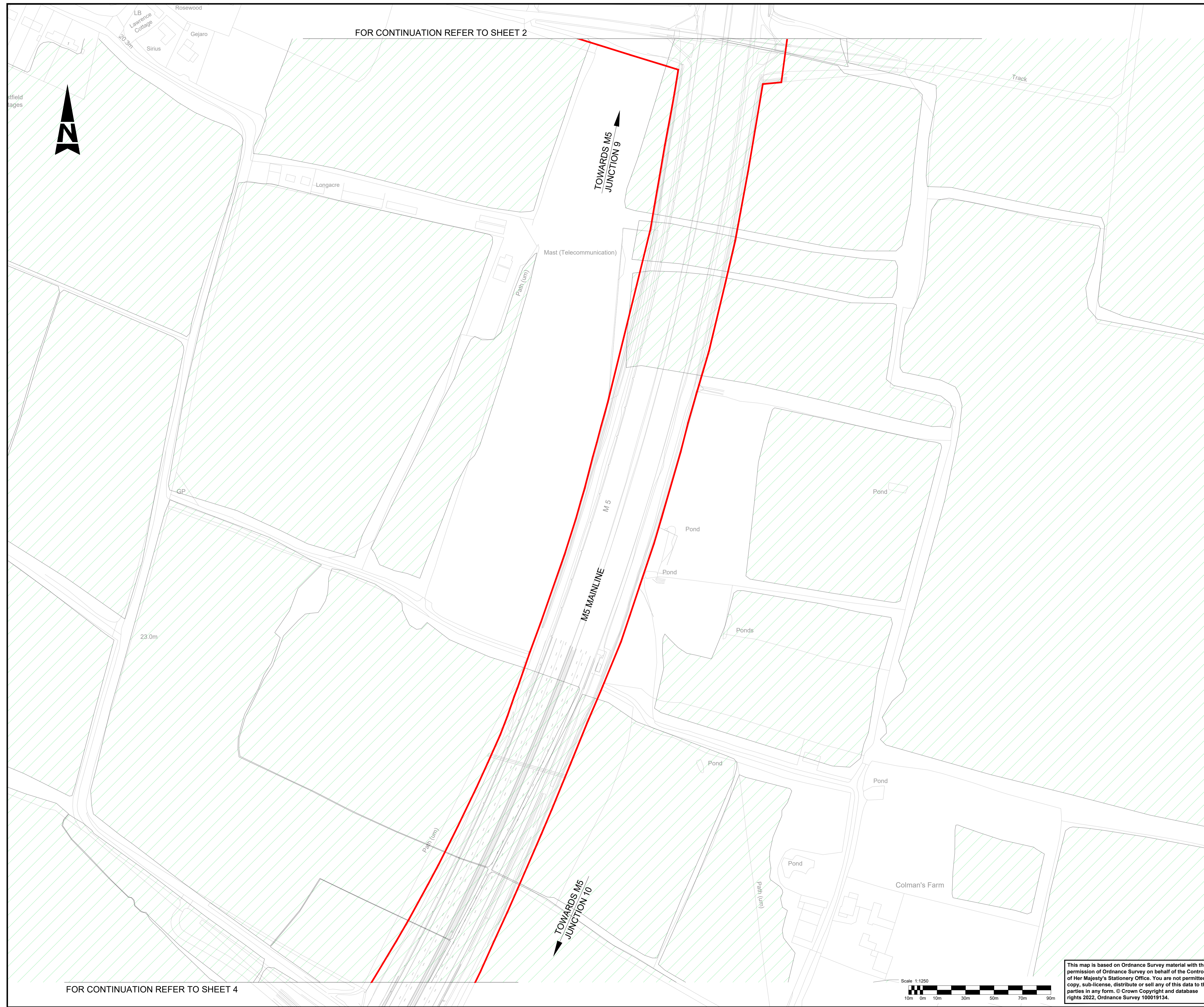
Drawing Title: **HISTORIC ENVIRONMENT SITES AND FEATURES PLAN - NON DESIGNATED RECEPTORS RIDGE AND FURROW SHEET 2 OF 16**

Drawing Number: **GCCM5J10 ATK EHR ZZ DR LH 000062**

Original Size: **A1** Scale: **AS SHOWN** Project Ref. No.: **5197035** Sheet: **2 of 16** Rev: **C01**



This map is based on Ordnance Survey material with the permission of Ordnance Survey on behalf of the Controller of Her Majesty's Stationary Office. You are not permitted to copy, sub-license, distribute or sell any of this data to third parties in any form. © Crown Copyright and database rights 2022, Ordnance Survey 100019134.

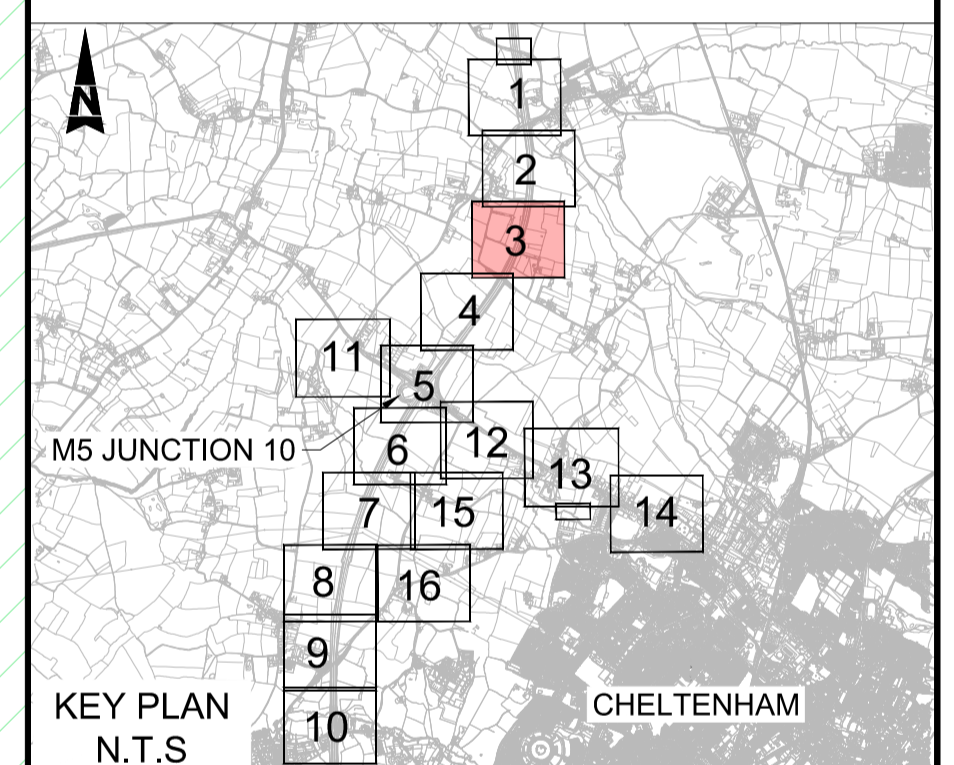


FOR CONTINUATION REFER TO SHEET 2

FOR CONTINUATION REFER TO SHEET 4

- NOTES:**
1. ALL DIMENSIONS ARE IN METRES UNLESS OTHERWISE STATED.
 2. THE WORKS PLANS SHOULD BE READ IN CONJUNCTION WITH THE DEVELOPMENT CONSENT ORDER.

- KEY**
- DEVELOPMENT CONSENT ORDER (DCO) BOUNDARY
 - ▨ RIDGE AND FURROW

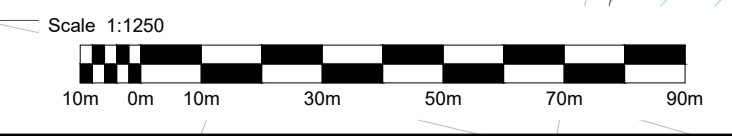


Description						
Status	Revision	Drawn	Checked	Reviewed	Authorised	Issue Date
Description						
Description						
Description						
REVISION 0						
Status	Revision	Drawn	Checked	Reviewed	Authorised	Issue Date
A1	C01	AC	SS	CDC	BM	04/12/23
Drawing Suitability						Status
APPROVED - PUBLISHED						A1

Project Title
M5 Junction 10 Improvements Scheme

Drawing Title
**HISTORIC ENVIRONMENT SITES AND FEATURES
PLAN - NON DESIGNATED RECEPTORS
RIDGE AND FURROW
SHEET 3 OF 16**

Drawing Number	GCCM5J10	ATK	EHR
	ZZ	DR	LH 000063
Original Size	A1	Scale	AS SHOWN
Project Ref. No.	5197035	Sheet	3 of 16
Rev.	C01		



This map is based on Ordnance Survey material with the permission of Ordnance Survey on behalf of the Controller of Her Majesty's Stationary Office. You are not permitted to copy, sub-license, distribute or sell any of this data to third parties in any form. © Crown Copyright and database rights 2022, Ordnance Survey 100019134.

FOR CONTINUATION REFER TO SHEET 3



TOWARDS M5 JUNCTION 9

M5 MAINLINE

Barn Farm

M5

LEIGH BROOK

TOWARDS M5 JUNCTION 10

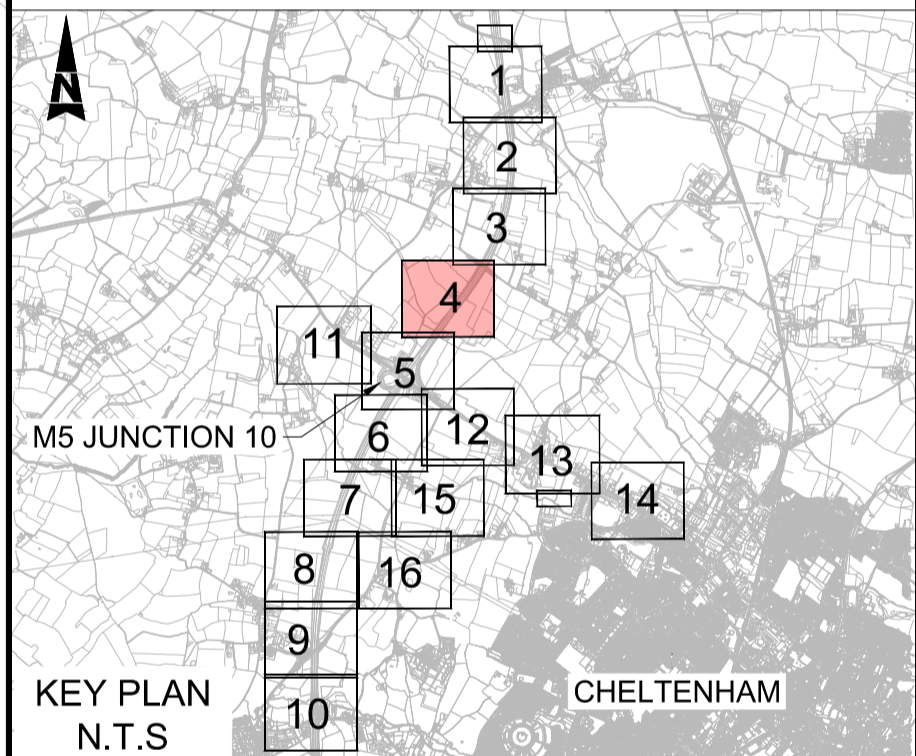
FOR CONTINUATION REFER TO SHEET 5

NOTES:

1. ALL DIMENSIONS ARE IN METRES UNLESS OTHERWISE STATED.
2. THE WORKS PLANS SHOULD BE READ IN CONJUNCTION WITH THE DEVELOPMENT CONSENT ORDER.

KEY

- DEVELOPMENT CONSENT ORDER (DCO) BOUNDARY
- ▨ RIDGE AND FURROW



Description

Status	Revision	Drawn	Checked	Reviewed	Authorised	Issue Date

Description

Status	Revision	Drawn	Checked	Reviewed	Authorised	Issue Date

Description

Status	Revision	Drawn	Checked	Reviewed	Authorised	Issue Date

Description

Status	Revision	Drawn	Checked	Reviewed	Authorised	Issue Date

REVISION 0

Status	Revision	Drawn	Checked	Reviewed	Authorised	Issue Date
A1	C01	AC	SS	CDC	BM	04/12/23

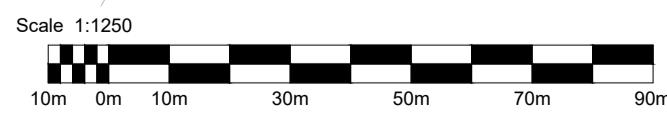
Drawing Suitability: APPROVED - PUBLISHED Status: A1

Project Title: M5 Junction 10 Improvements Scheme

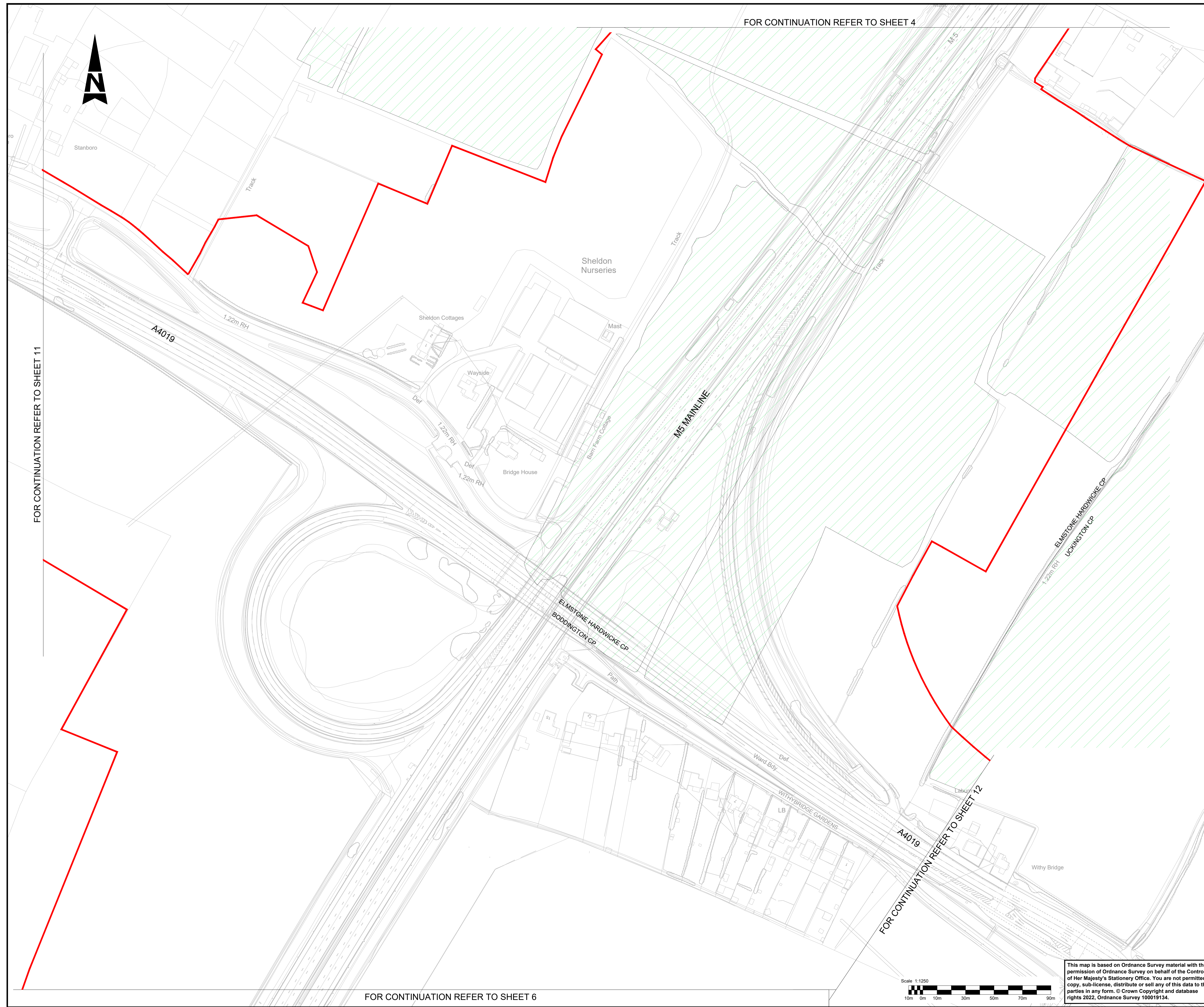
Drawing Title: HISTORIC ENVIRONMENT SITES AND FEATURES PLAN - NON DESIGNATED RECEPTORS RIDGE AND FURROW SHEET 4 OF 16

Drawing Number: GCCM5J10 ATK EHR ZZ DR LH 000064

Original Size: A1 Scale: AS SHOWN Project Ref. No.: 5197035 Sheet: 4 of 16 Rev: C01



This map is based on Ordnance Survey material with the permission of Ordnance Survey on behalf of the Controller of Her Majesty's Stationary Office. You are not permitted to copy, sub-license, distribute or sell any of this data to third parties in any form. © Crown Copyright and database rights 2022, Ordnance Survey 100019134.



FOR CONTINUATION REFER TO SHEET 4

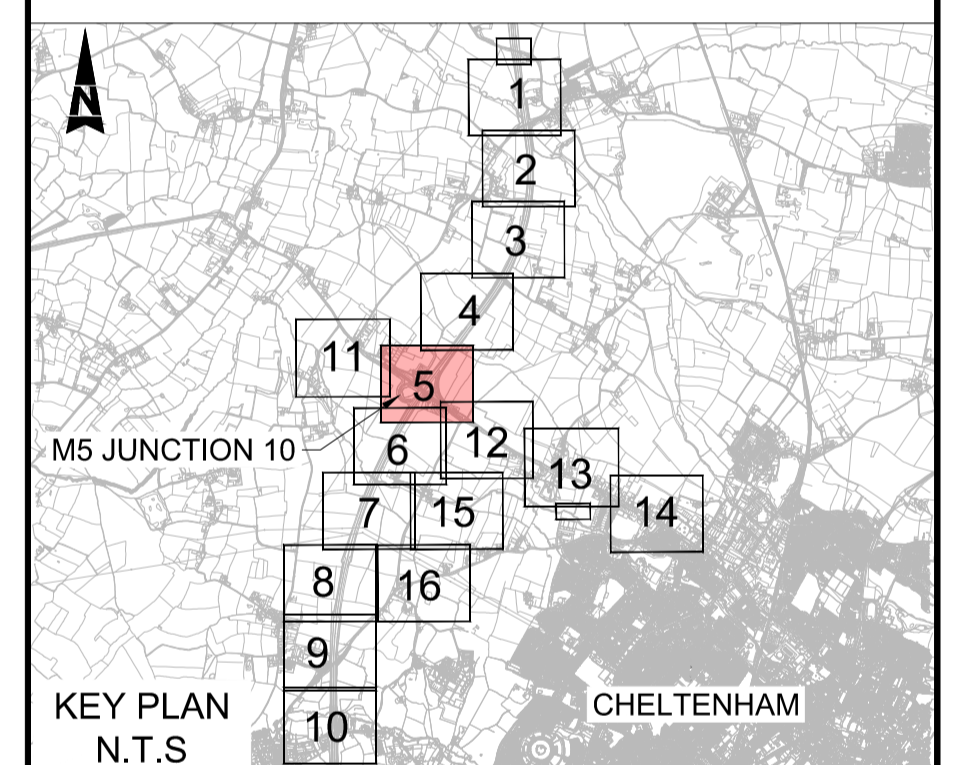
FOR CONTINUATION REFER TO SHEET 11

FOR CONTINUATION REFER TO SHEET 12

FOR CONTINUATION REFER TO SHEET 6

- NOTES:**
1. ALL DIMENSIONS ARE IN METRES UNLESS OTHERWISE STATED.
 2. THE WORKS PLANS SHOULD BE READ IN CONJUNCTION WITH THE DEVELOPMENT CONSENT ORDER.

- KEY**
- DEVELOPMENT CONSENT ORDER (DCO) BOUNDARY
 - ▨ RIDGE AND FURROW



Description	Status	Revision	Drawn	Checked	Reviewed	Authorised	Issue Date

REVISION 0

Status	Revision	Drawn	Checked	Reviewed	Authorised	Issue Date
A1	C01	AC	SS	CDC	BM	04/12/23

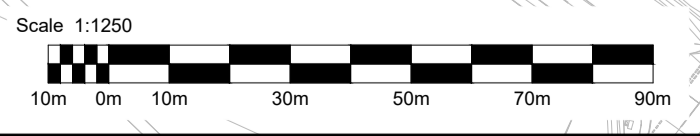
Drawing Suitability: APPROVED - PUBLISHED Status: A1

Project Title: **M5 Junction 10 Improvements Scheme**

Drawing Title: **HISTORIC ENVIRONMENT SITES AND FEATURES PLAN - NON DESIGNATED RECEPTORS RIDGE AND FURROW SHEET 5 OF 16**

Drawing Number: **GCCM5J10 ATK EHR ZZ DR LH 000065**

Original Size: **A1** Scale: **AS SHOWN** Project Ref. No.: **5197035** Sheet: **5 of 16** Rev: **C01**



This map is based on Ordnance Survey material with the permission of Ordnance Survey on behalf of the Controller of Her Majesty's Stationary Office. You are not permitted to copy, sub-license, distribute or sell any of this data to third parties in any form. © Crown Copyright and database rights 2022, Ordnance Survey 100019134.



ETL

FOR CONTINUATION REFER TO SHEET 5

TOWARDS M5 JUNCTION 10

M5 MAINLINE

TOWARDS M5 JUNCTION 11

Butler's Court

The Hayloft

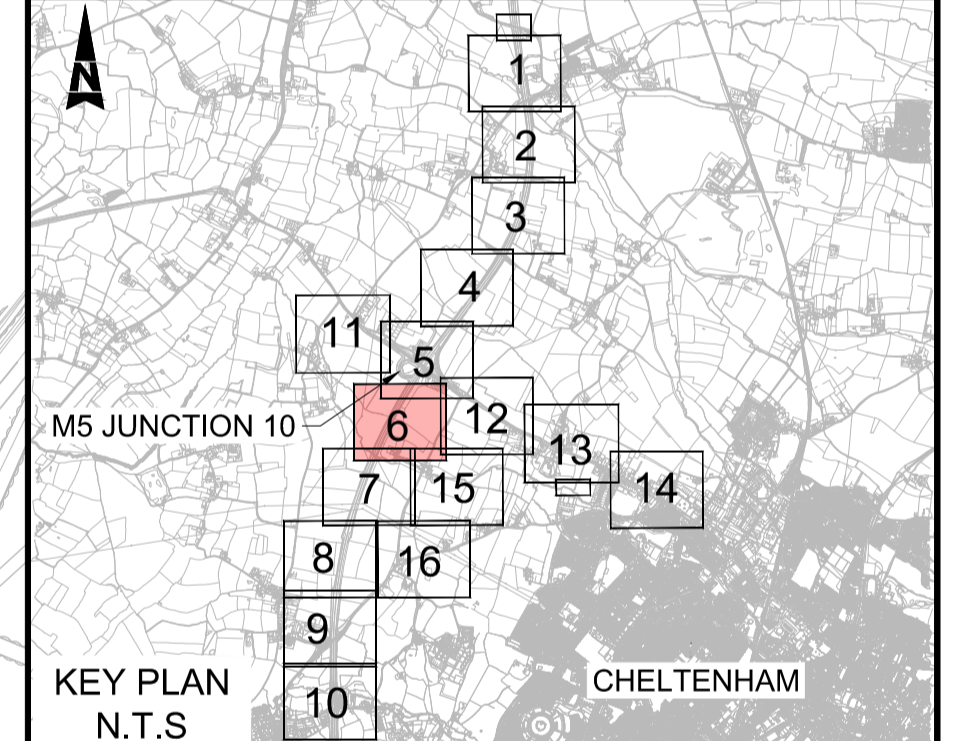
FOR CONTINUATION REFER TO SHEET 7

FOR CONTINUATION REFER TO SHEET 15

FOR CONTINUATION REFER TO SHEET 12

- NOTES:**
1. ALL DIMENSIONS ARE IN METRES UNLESS OTHERWISE STATED.
 2. THE WORKS PLANS SHOULD BE READ IN CONJUNCTION WITH THE DEVELOPMENT CONSENT ORDER.

- KEY**
- DEVELOPMENT CONSENT ORDER (DCO) BOUNDARY
 - ▨ RIDGE AND FURROW



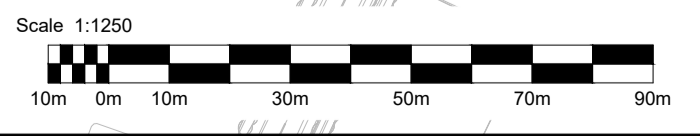
Description	Status	Revision	Drawn	Checked	Reviewed	Authorised	Issue Date	
Description								
Description								
Description								
Description								
Description								
REVISION 0	A1	C01	AC	SS	CDC	BM	04/12/23	
Drawing Suitability	APPROVED - PUBLISHED						Status	A1

Project Title
M5 Junction 10 Improvements Scheme

Drawing Title
HISTORIC ENVIRONMENT SITES AND FEATURES PLAN - NON DESIGNATED RECEPTORS RIDGE AND FURROW SHEET 6 OF 16

Drawing Number
GCCM5J10 ATK EHR
ZZ DR LH 000066

Original Size: A1 Scale: AS SHOWN Project Ref. No.: 5197035 Sheet: 1 of 16 Rev: C01



This map is based on Ordnance Survey material with the permission of Ordnance Survey on behalf of the Controller of Her Majesty's Stationary Office. You are not permitted to copy, sub-license, distribute or sell any of this data to third parties in any form. © Crown Copyright and database rights 2022, Ordnance Survey 100019134.

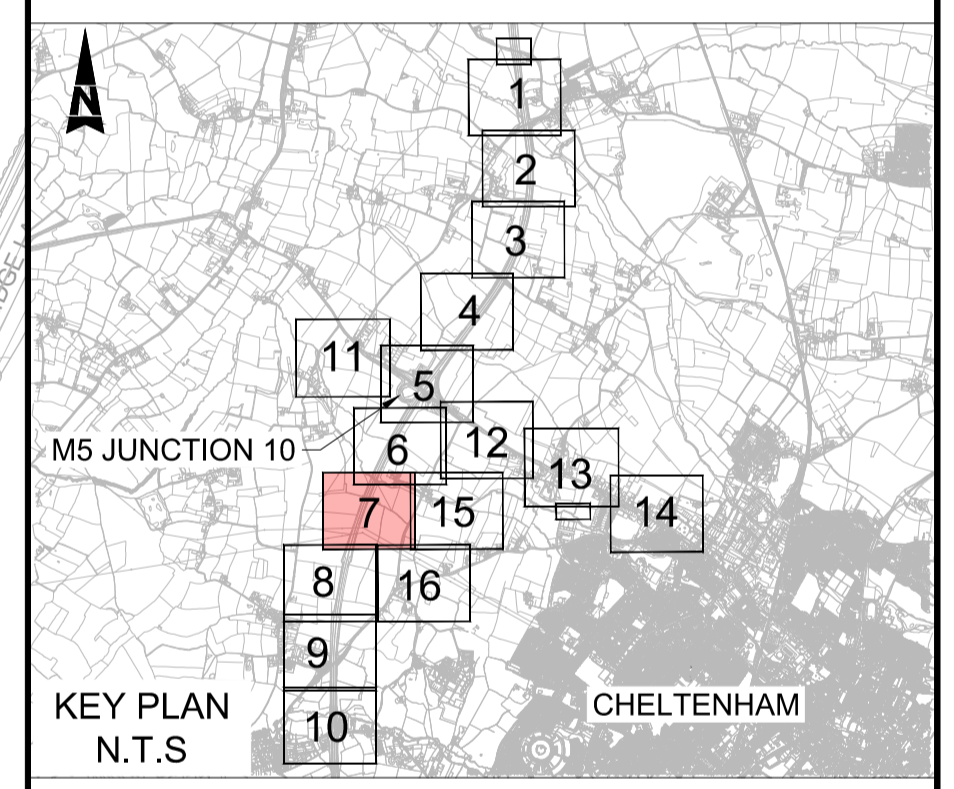


- NOTES:**
- ALL DIMENSIONS ARE IN METRES UNLESS OTHERWISE STATED.
 - THE WORKS PLANS SHOULD BE READ IN CONJUNCTION WITH THE DEVELOPMENT CONSENT ORDER.

KEY

— DEVELOPMENT CONSENT ORDER (DCO) BOUNDARY

▨ RIDGE AND FURROW



Description						
Status	Revision	Drawn	Checked	Reviewed	Authorised	Issue Date
Description						
Description						
Description						
Description						
REVISION 0						
Status	Revision	Drawn	Checked	Reviewed	Authorised	Issue Date
A1	C01	AC	SS	CDC	BM	04/12/23
Drawing Suitability						Status
APPROVED - PUBLISHED						A1

Project Title
M5 Junction 10 Improvements Scheme

Drawing Title
**HISTORIC ENVIRONMENT SITES AND FEATURES
PLAN - NON DESIGNATED RECEPTORS
RIDGE AND FURROW
SHEET 7 OF 16**

Drawing Number	GCCM5J10	ATK	EHR
	ZZ	DR	LH 000067
Original Size	A1	Scale	AS SHOWN
Project Ref. No.	5197035	Sheet	7 of 16
Rev.	C01		

Scale 1:1250

This map is based on Ordnance Survey material with the permission of Ordnance Survey on behalf of the Controller of Her Majesty's Stationary Office. You are not permitted to copy, sub-license, distribute or sell any of this data to third parties in any form. © Crown Copyright and database rights 2022, Ordnance Survey 100019134.



FOR CONTINUATION REFER TO SHEET 7

TOWARDS M5 JUNCTION 10

M5 MAINLINE

TOWARDS M5 JUNCTION 11

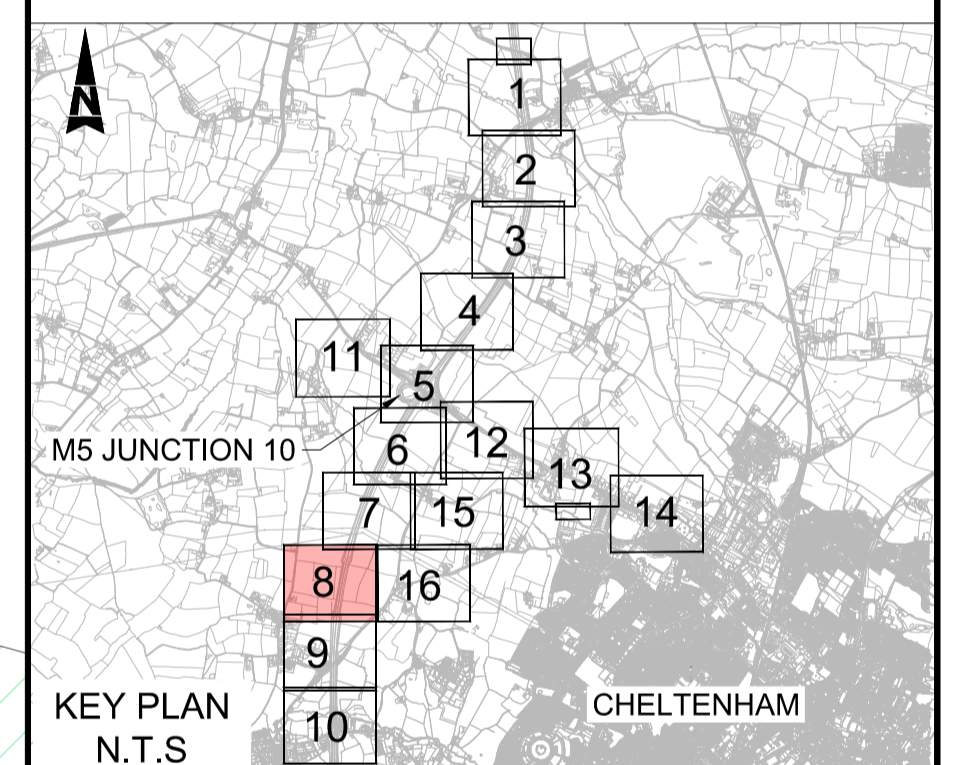
FOR CONTINUATION REFER TO SHEET 9

NOTES:

1. ALL DIMENSIONS ARE IN METRES UNLESS OTHERWISE STATED.
2. THE WORKS PLANS SHOULD BE READ IN CONJUNCTION WITH THE DEVELOPMENT CONSENT ORDER.

KEY

- DEVELOPMENT CONSENT ORDER (DCO) BOUNDARY
- ▨ RIDGE AND FURROW



Description						
Status	Revision	Drawn	Checked	Reviewed	Authorised	Issue Date

Description						
Status	Revision	Drawn	Checked	Reviewed	Authorised	Issue Date

Description						
Status	Revision	Drawn	Checked	Reviewed	Authorised	Issue Date

Description						
Status	Revision	Drawn	Checked	Reviewed	Authorised	Issue Date

Description						
REVISION 0						
Status	Revision	Drawn	Checked	Reviewed	Authorised	Issue Date
A1	C01	AC	SS	CDC	BM	04/12/23

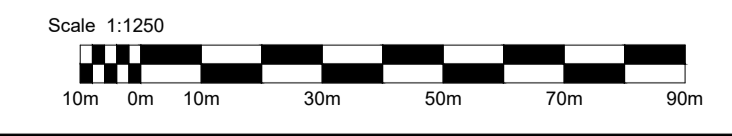
Drawing Suitability	Status
APPROVED - PUBLISHED	A1

Project Title
M5 Junction 10 Improvements Scheme

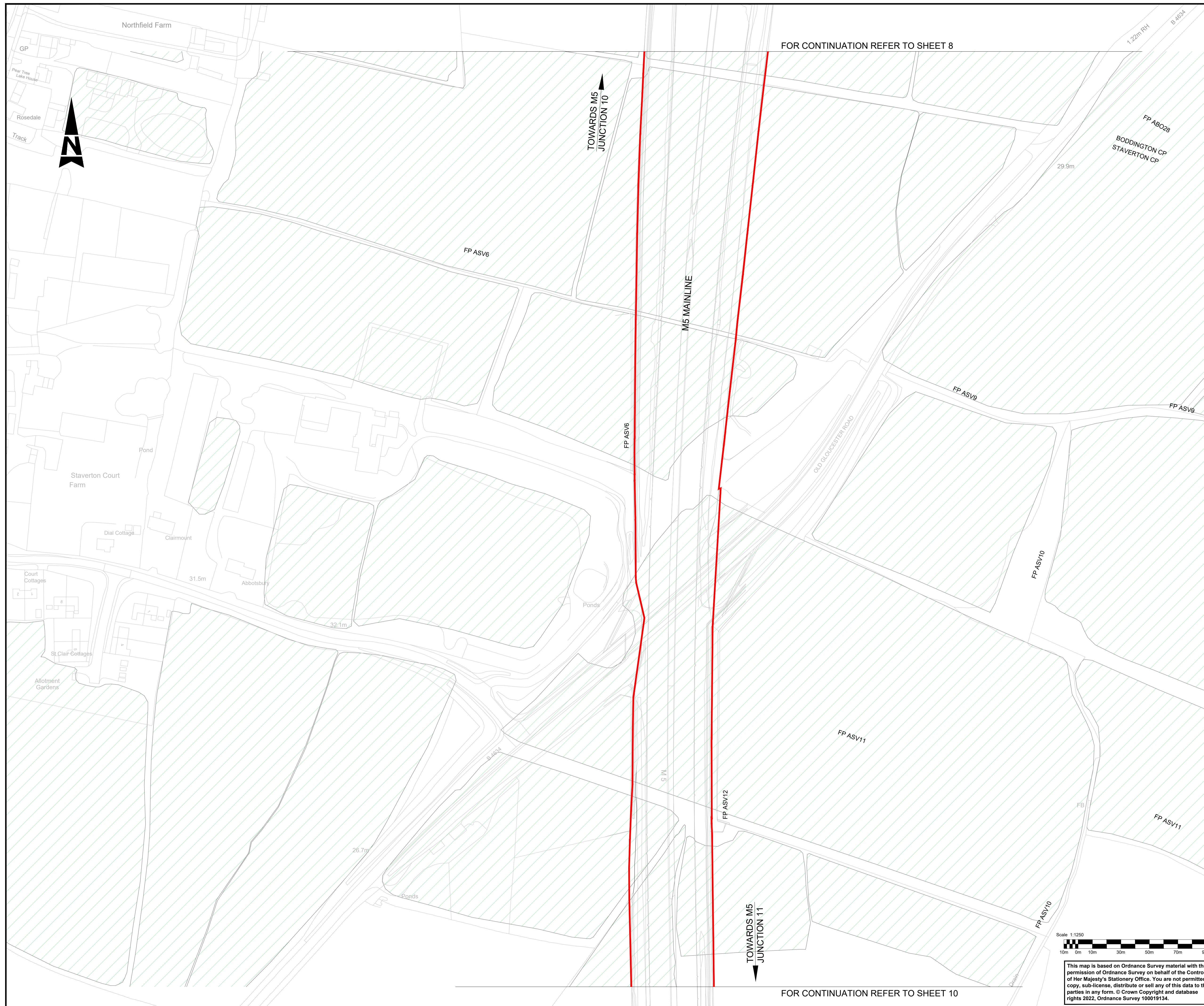
Drawing Title
HISTORIC ENVIRONMENT SITES AND FEATURES PLAN - NON DESIGNATED RECEPTORS RIDGE AND FURROW SHEET 8 OF 16

Drawing Number	Project Title	Project Ref. No.	Sheet	Rev.
GCCM5J10 ZZ	ATK EHR	5197035	8 of 16	C01

Original Size	Scale	AS SHOWN	Project Ref. No.	5197035	Sheet	8 of 16	Rev.	C01
---------------	-------	----------	------------------	---------	-------	---------	------	-----



This map is based on Ordnance Survey material with the permission of Ordnance Survey on behalf of the Controller of Her Majesty's Stationary Office. You are not permitted to copy, sub-license, distribute or sell any of this data to third parties in any form. © Crown Copyright and database rights 2022, Ordnance Survey 100019134.



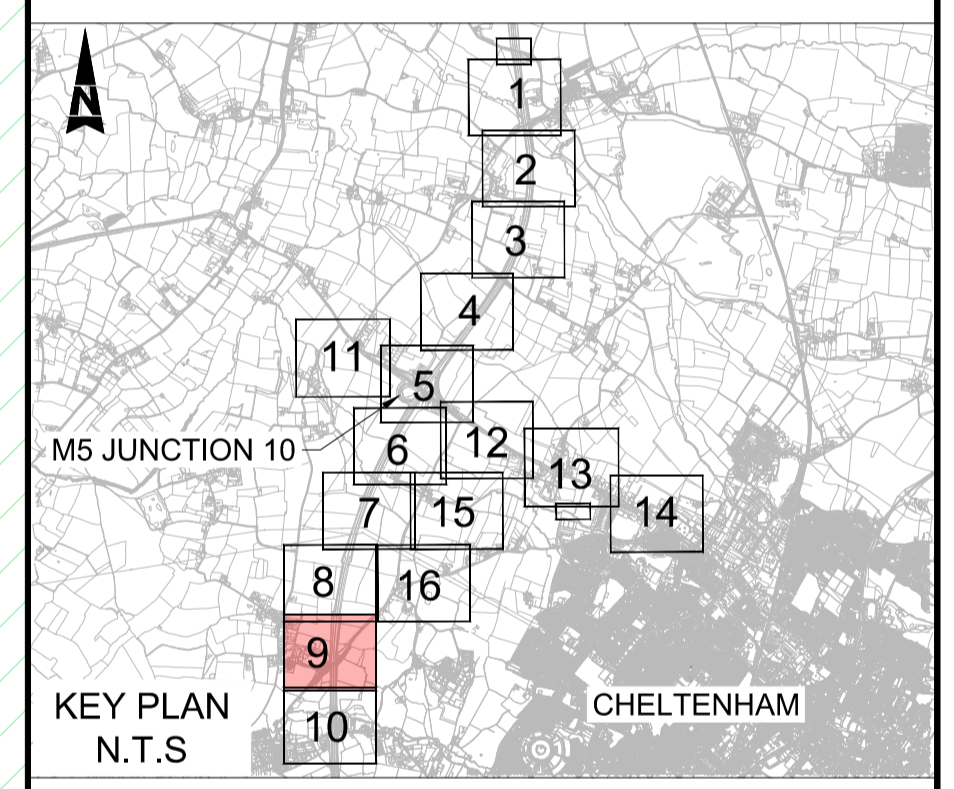
NOTES:

- ALL DIMENSIONS ARE IN METRES UNLESS OTHERWISE STATED.
- THE WORKS PLANS SHOULD BE READ IN CONJUNCTION WITH THE DEVELOPMENT CONSENT ORDER.

KEY

— DEVELOPMENT CONSENT ORDER (DCO) BOUNDARY

▨ RIDGE AND FURROW



Description						
Status	Revision	Drawn	Checked	Reviewed	Authorised	Issue Date
Description						
Status	Revision	Drawn	Checked	Reviewed	Authorised	Issue Date
Description						
Status	Revision	Drawn	Checked	Reviewed	Authorised	Issue Date
Description						
Status	Revision	Drawn	Checked	Reviewed	Authorised	Issue Date
REVISION 0						
A1	C01	AC	SS	CDC	BM	04/12/23
Drawing Suitability						Status
APPROVED - PUBLISHED						A1
Project Title						
M5 Junction 10 Improvements Scheme						
Drawing Title						
HISTORIC ENVIRONMENT SITES AND FEATURES PLAN - NON DESIGNATED RECEPTORS RIDGE AND FURROW SHEET 9 OF 16						
Drawing Number						
GCCM5J10	ATK	EHR	ZZ DR LH 000069			
Original Size: A1	Scale: AS SHOWN	Project Ref. No.: 5197035	Sheet: 9 of 16	Rev: C01		

Scale 1:1250

This map is based on Ordnance Survey material with the permission of Ordnance Survey on behalf of the Controller of Her Majesty's Stationary Office. You are not permitted to copy, sub-license, distribute or sell any of this data to third parties in any form. © Crown Copyright and database rights 2022, Ordnance Survey 100019134.

5th Floor, Block 5
Shire Hall
Bearland
Gloucester
GL1 2TH