

M5 Junction 10 Improvements Scheme

Historic Environment Sites and Features Plan - Non Designated Receptors - Part 1 of 2 TR010063 - APP 2.12

Regulation 5 (2) (m)

Planning Act 2008

Infrastructure Planning (Applications: Prescribed Forms and Procedure) Regulations 2009

Volume 2

December 2023

THIS PAGE IS LEFT INTENTIONALLY BLANK

**Infrastructure Planning
Planning Act 2008**

**The Infrastructure Planning (Applications:
Prescribed Forms and Procedure)
Regulations 2009**

**M5 Junction 10 Improvements Scheme
Development Consent Order 202[X]**

**Historic Environment Sites and Features Plan - Non Designated
Receptors - Part 1 of 2**

Regulation Number:	Regulation 5 (2) (m)
Planning Inspectorate Scheme Reference	TR010063
Application Document Reference	TR010063 – APP 2.12
Author:	M5 Junction 10 Improvements Scheme Project Team

Version	Date	Status of Version
Rev 0	December 2023	DCO Application

Table of contents

Chapter	Page
1. Schedule of Plans included in the application	5
1.1. List of drawings in Part 1	5
1.2. List of drawings in Part 2	6

1. Schedule of Plans included in the application

1.1. List of drawings in Part 1

Document Title	Document Number	Revision
Historic Environment Sites and Features Plans Non Designated Receptors - Key Plan	TR010063 – APP 2.12	C01
Historic Environment Sites and Features Plans Non Designated Receptors – Sheet 1 of 16	TR010063 – APP 2.12	C01
Historic Environment Sites and Features Plans Non Designated Receptors – Sheet 2 of 16	TR010063 – APP 2.12	C01
Historic Environment Sites and Features Plans Non Designated Receptors – Sheet 3 of 16	TR010063 – APP 2.12	C01
Historic Environment Sites and Features Plans Non Designated Receptors – Sheet 4 of 16	TR010063 – APP 2.12	C01
Historic Environment Sites and Features Plans Non Designated Receptors – Sheet 5 of 16	TR010063 – APP 2.12	C01
Historic Environment Sites and Features Plans Non Designated Receptors – Sheet 6 of 16	TR010063 – APP 2.12	C01
Historic Environment Sites and Features Plans Non Designated Receptors – Sheet 7 of 16	TR010063 – APP 2.12	C01
Historic Environment Sites and Features Plans Non Designated Receptors – Sheet 8 of 16	TR010063 – APP 2.12	C01
Historic Environment Sites and Features Plans Non Designated Receptors – Sheet 9 of 16	TR010063 – APP 2.12	C01
Historic Environment Sites and Features Plans Non Designated Receptors – Sheet 10 of 16	TR010063 – APP 2.12	C01

1.2. List of drawings in Part 2

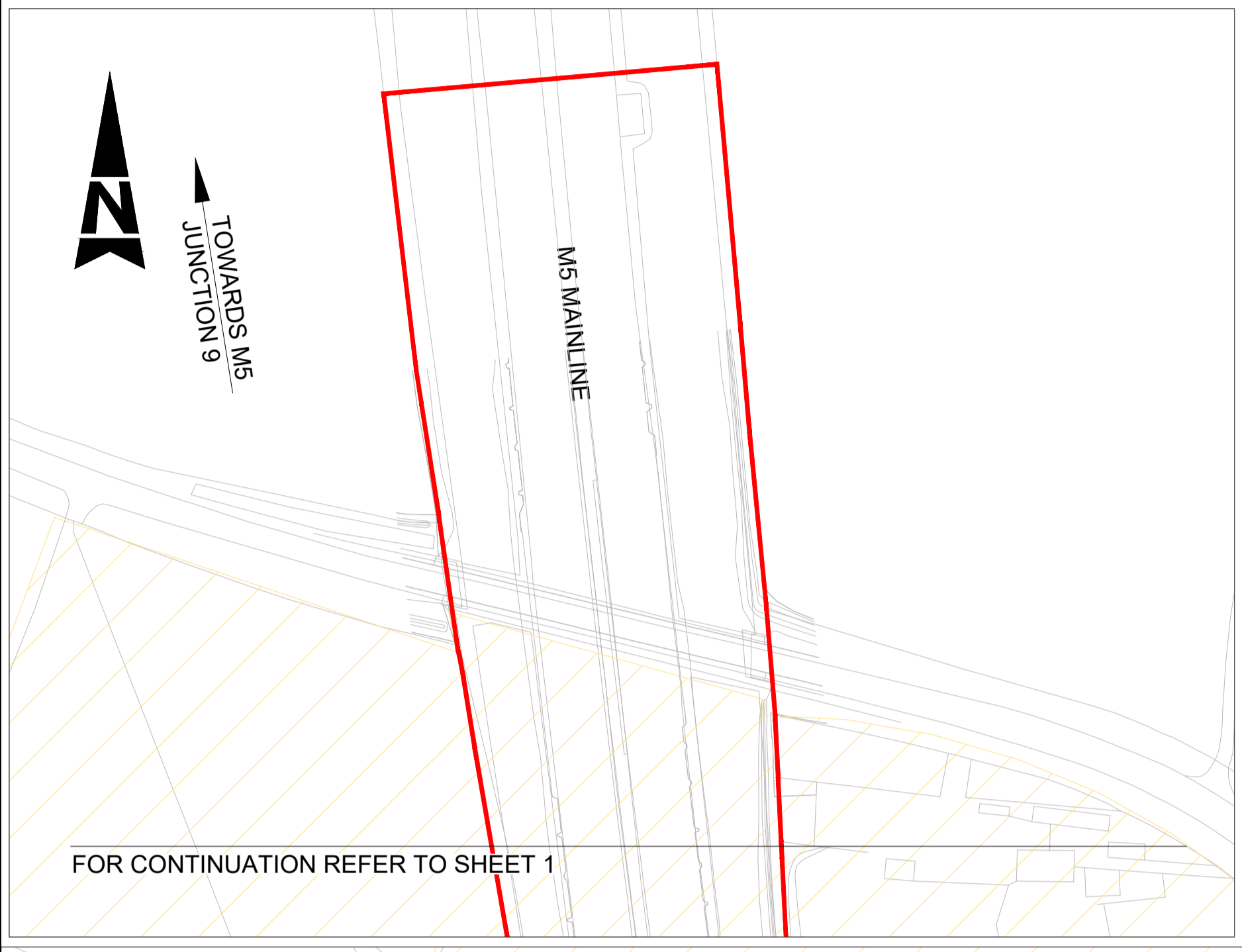
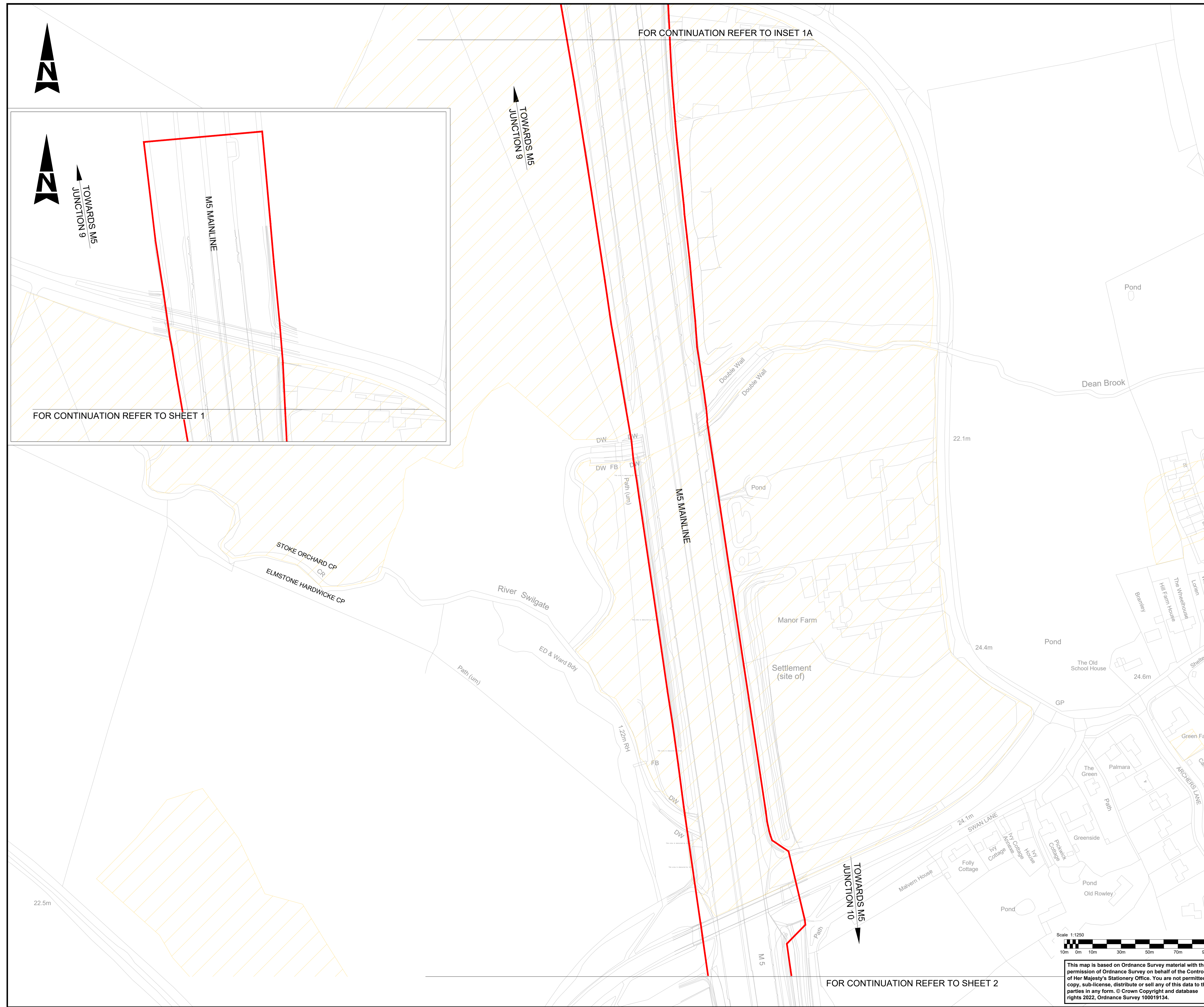
Document Title	Document Number	Revision
Historic Environment Sites and Features Plans Non Designated Receptors – Sheet 11 of 16	TR010063 – APP 2.12	C01
Historic Environment Sites and Features Plans Non Designated Receptors – Sheet 12 of 16	TR010063 – APP 2.12	C01
Historic Environment Sites and Features Plans Non Designated Receptors – Sheet 13 of 16	TR010063 – APP 2.12	C01
Historic Environment Sites and Features Plans Non Designated Receptors – Sheet 14 of 16	TR010063 – APP 2.12	C01
Historic Environment Sites and Features Plans Non Designated Receptors – Sheet 15 of 16	TR010063 – APP 2.12	C01
Historic Environment Sites and Features Plans Non Designated Receptors – Sheet 16 of 16	TR010063 – APP 2.12	C01



- NOTES:**
1. ALL DIMENSIONS ARE IN METRES UNLESS OTHERWISE STATED.
 2. THE WORKS PLANS SHOULD BE READ IN CONJUNCTION WITH THE DEVELOPMENT CONSENT ORDER.
- KEY:**
- SHEET USED AS PART OF THIS DRAWING SERIES.
 - EXISTING ORDNANCE SURVEY DATA
 - DEVELOPMENT CONSENT ORDER (DCO) BOUNDARY
 - SCHEME EXTENT

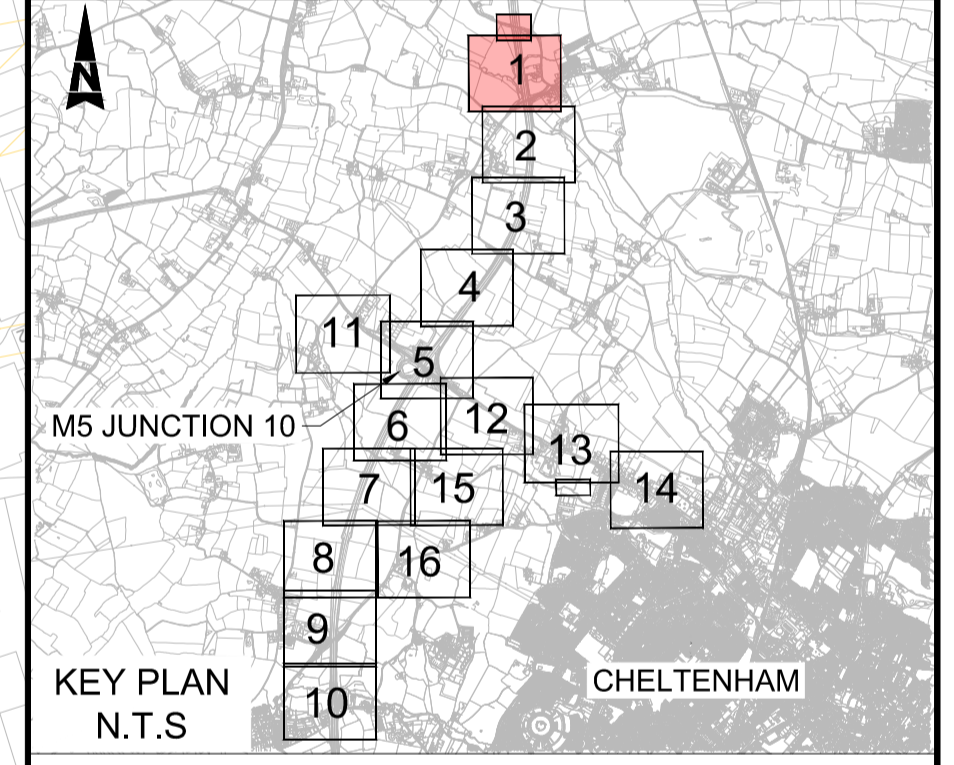
This map is based on Ordnance Survey material with the permission of Ordnance Survey on behalf of the Controller of Her Majesty's Stationery Office. You are not permitted to copy, sub-license, distribute or sell any of this data to third parties in any form. © Crown Copyright and database rights 2022, Ordnance Survey 100019134.

Description							
Status	Revision	Drawn	Checked	Reviewed	Authorised	Issue Date	
Description							
Status	Revision	Drawn	Checked	Reviewed	Authorised	Issue Date	
Description							
Status	Revision	Drawn	Checked	Reviewed	Authorised	Issue Date	
Description							
Status	Revision	Drawn	Checked	Reviewed	Authorised	Issue Date	
REVISION 0							
A1	C01	AC	SS	CDC	BM	04/12/23	
Drawing Suitability						Status	
APPROVED - PUBLISHED						A1	
Project Title							
M5 Junction 10 Improvements Scheme							
Drawing Title							
HISTORIC ENVIRONMENT SITES AND FEATURES PLAN - NON DESIGNATED RECEPTORS (EXCLUDING RIDGE AND FURROW) KEY PLAN							
Drawing Number							
GCCM5J10		ATK		EHR		ZZ DR LH 000040	
Original Size:	A1	Scale:	AS SHOWN	Project Ref. No.:	5197035	Sheet:	1 of 1
Rev:	C01						



- NOTES:**
- ALL DIMENSIONS ARE IN METRES UNLESS OTHERWISE STATED.
 - THE WORKS PLANS SHOULD BE READ IN CONJUNCTION WITH THE DEVELOPMENT CONSENT ORDER.

- KEY**
- DEVELOPMENT CONSENT ORDER (DCO) BOUNDARY
 - HISTORIC ENVIRONMENT RECORD-LOCALLY LISTED BUILDINGS
 - HISTORIC ENVIRONMENT RECORD-CANALS
 - HISTORIC ENVIRONMENT RECORDS-GENERAL
 - HISTORIC ENVIRONMENT RECORDS-MILITARY
 - HISTORIC ENVIRONMENT RECORDS-TURNPIKE



Description	Status	Revision	Drawn	Checked	Reviewed	Authorised	Issue Date
Description							
Description							
Description							
Description							
Description							
Description							
Description							
Description							
REVISION 0							
A1	C01	AC	SS	CDC	BM		04/12/23
Drawing Suitability	APPROVED - PUBLISHED						Status
							A1

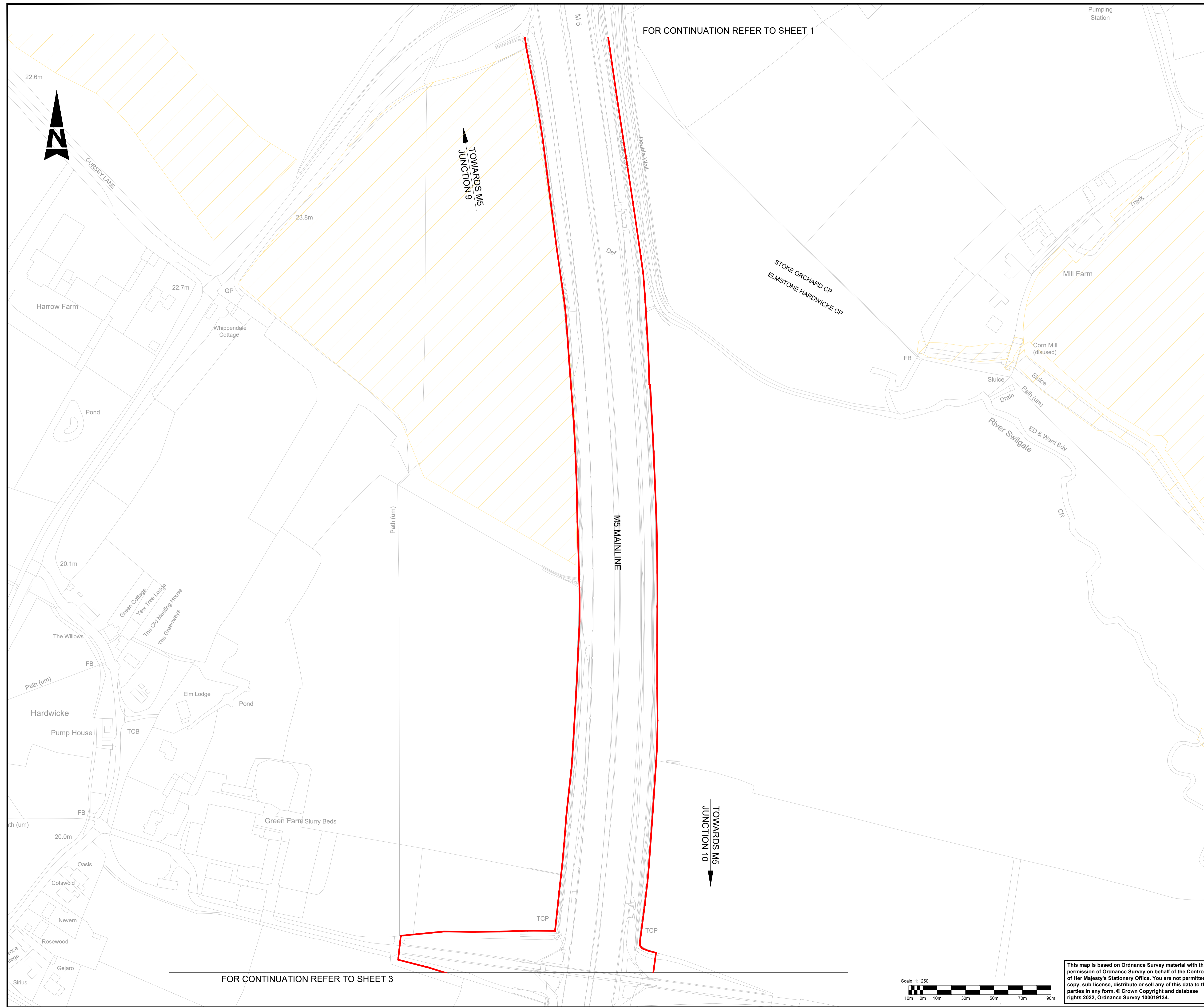
Project Title
M5 Junction 10 Improvements Scheme

Drawing Title
**HISTORIC ENVIRONMENT SITES AND FEATURES
PLAN - NON DESIGNATED RECEPTORS
(EXCLUDING RIDGE AND FURROW)
SHEET 1 OF 16**

Drawing Number	GCCM5J10	ATK	EHR
	ZZ	DR	LH 000041
Original Size	A1	Scale	AS SHOWN
Project Ref. No.	5197035	Sheet	1 of 16
Rev.	C01		

Scale 1:1250
10m 0m 10m 30m 50m 70m 90m

This map is based on Ordnance Survey material with the permission of Ordnance Survey on behalf of the Controller of Her Majesty's Stationary Office. You are not permitted to copy, sub-license, distribute or sell any of this data to third parties in any form. © Crown Copyright and database rights 2022, Ordnance Survey 100019134.

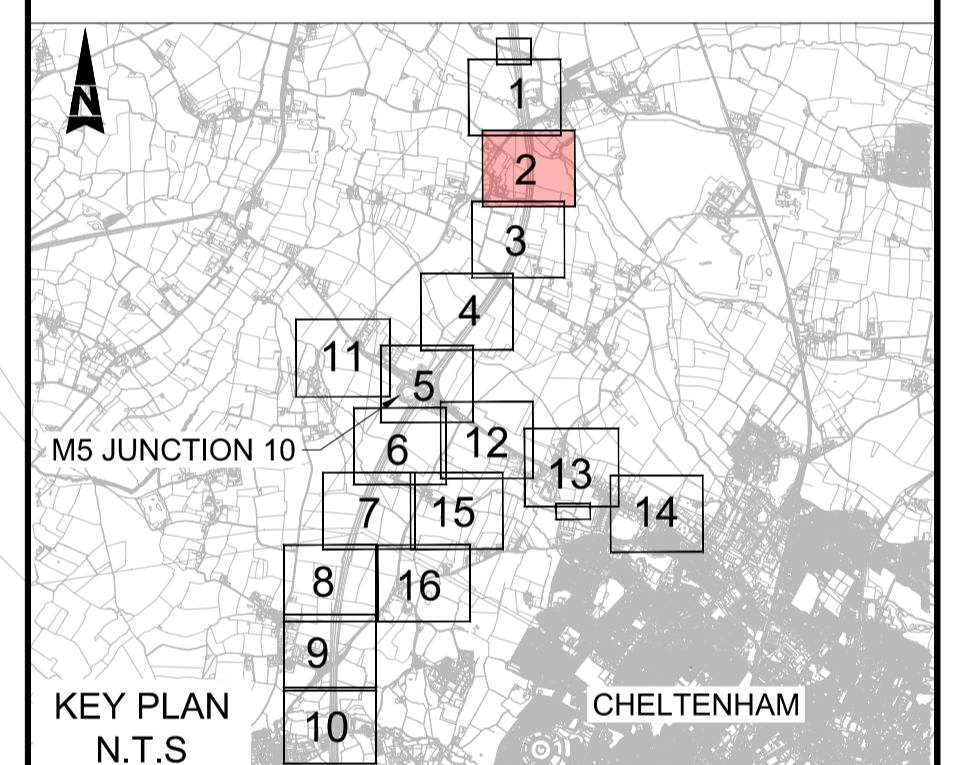


FOR CONTINUATION REFER TO SHEET 1

FOR CONTINUATION REFER TO SHEET 3

- NOTES:**
- ALL DIMENSIONS ARE IN METRES UNLESS OTHERWISE STATED.
 - THE WORKS PLANS SHOULD BE READ IN CONJUNCTION WITH THE DEVELOPMENT CONSENT ORDER.

- KEY**
- DEVELOPMENT CONSENT ORDER (DCO) BOUNDARY
 - HISTORIC ENVIRONMENT RECORD-LOCALLY LISTED BUILDINGS
 - HISTORIC ENVIRONMENT RECORD-CANALS
 - HISTORIC ENVIRONMENT RECORDS-GENERAL
 - HISTORIC ENVIRONMENT RECORDS-MILITARY
 - HISTORIC ENVIRONMENT RECORDS-TURNPIKE

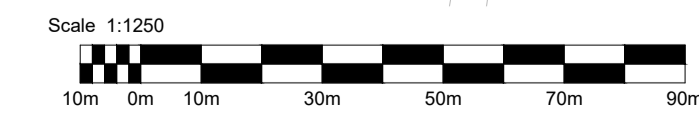


Description						
Status	Revision	Drawn	Checked	Reviewed	Authorised	Issue Date
Description						
Description						
Description						
REVISION 0						
Status	Revision	Drawn	Checked	Reviewed	Authorised	Issue Date
A1	C01	AC	SS	CDC	BM	04/12/23
Drawing Suitability						Status
APPROVED - PUBLISHED						A1

Project Title
M5 Junction 10 Improvements Scheme

Drawing Title
HISTORIC ENVIRONMENT SITES AND FEATURES PLAN - NON DESIGNATED RECEPTORS (EXCLUDING RIDGE AND FURROW) SHEET 2 OF 16

Drawing Number	GCCM5J10	ATK	EHR
	ZZ	DR	LH 000042
Original Size	A1	Scale	AS SHOWN
Project Ref. No.	5197035	Sheet	2 of 16
Rev.	C01		



This map is based on Ordnance Survey material with the permission of Ordnance Survey on behalf of the Controller of Her Majesty's Stationary Office. You are not permitted to copy, sub-license, distribute or sell any of this data to third parties in any form. © Crown Copyright and database rights 2022, Ordnance Survey 100019134.

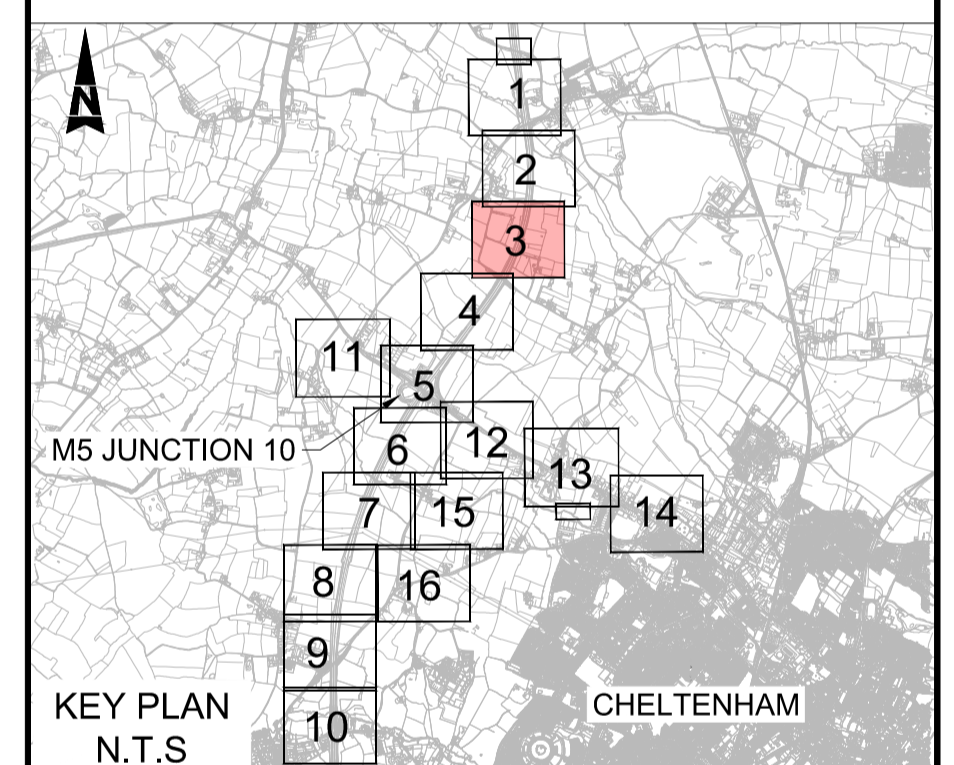


FOR CONTINUATION REFER TO SHEET 2

FOR CONTINUATION REFER TO SHEET 4

- NOTES:**
- ALL DIMENSIONS ARE IN METRES UNLESS OTHERWISE STATED.
 - THE WORKS PLANS SHOULD BE READ IN CONJUNCTION WITH THE DEVELOPMENT CONSENT ORDER.

- KEY**
- DEVELOPMENT CONSENT ORDER (DCO) BOUNDARY
 - HISTORIC ENVIRONMENT RECORD-LOCALLY LISTED BUILDINGS
 - HISTORIC ENVIRONMENT RECORD-CANALS
 - HISTORIC ENVIRONMENT RECORDS-GENERAL
 - HISTORIC ENVIRONMENT RECORDS-MILITARY
 - HISTORIC ENVIRONMENT RECORDS-TURNPIKE

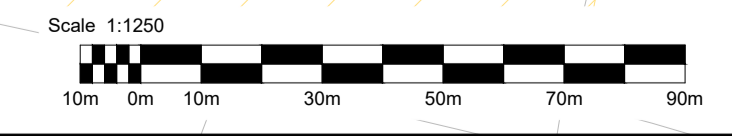


Description						
Status	Revision	Drawn	Checked	Reviewed	Authorised	Issue Date
Description						
Description						
Description						
REVISION 0						
Status	Revision	Drawn	Checked	Reviewed	Authorised	Issue Date
A1	C01	AC	SS	CDC	BM	04/12/23
Drawing Suitability						Status
APPROVED - PUBLISHED						A1

Project Title
M5 Junction 10 Improvements Scheme

Drawing Title
HISTORIC ENVIRONMENT SITES AND FEATURES PLAN - NON DESIGNATED RECEPTORS (EXCLUDING RIDGE AND FURROW) SHEET 3 OF 16

Drawing Number	GCCM5J10	ATK	EHR
	ZZ	DR	LH 000043
Original Size	A1	Scale	AS SHOWN
Project Ref. No.	5197035	Sheet	3 of 16
Rev.	C01		



This map is based on Ordnance Survey material with the permission of Ordnance Survey on behalf of the Controller of Her Majesty's Stationary Office. You are not permitted to copy, sub-license, distribute or sell any of this data to third parties in any form. © Crown Copyright and database rights 2022, Ordnance Survey 100019134.

FOR CONTINUATION REFER TO SHEET 3



TOWARDS M5 JUNCTION 9

M5 MAINLINE

Barn Farm

M5

TOWARDS M5 JUNCTION 10

LEIGH BROOK

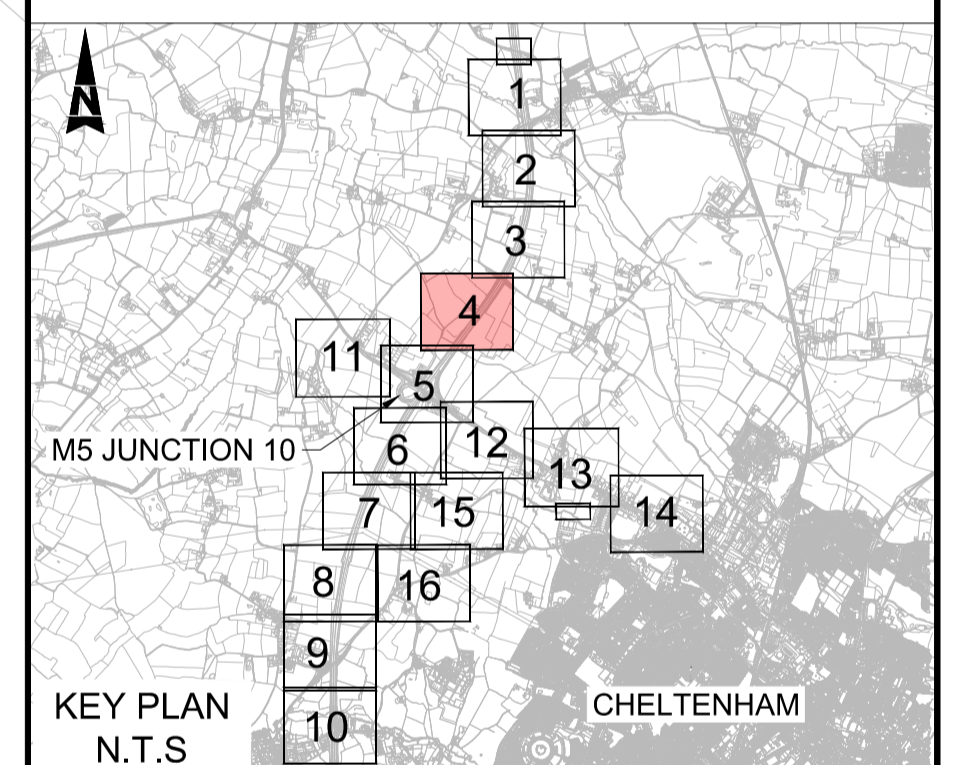
FOR CONTINUATION REFER TO SHEET 5

NOTES:

- 1. ALL DIMENSIONS ARE IN METRES UNLESS OTHERWISE STATED.
- 2. THE WORKS PLANS SHOULD BE READ IN CONJUNCTION WITH THE DEVELOPMENT CONSENT ORDER.

KEY

- DEVELOPMENT CONSENT ORDER (DCO) BOUNDARY
- HISTORIC ENVIRONMENT RECORD-LOCALLY LISTED BUILDINGS
- ▨ HISTORIC ENVIRONMENT RECORD-CANALS
- ▨ HISTORIC ENVIRONMENT RECORDS-GENERAL
- ▨ HISTORIC ENVIRONMENT RECORDS-MILITARY
- ▨ HISTORIC ENVIRONMENT RECORDS-TURNPIKE

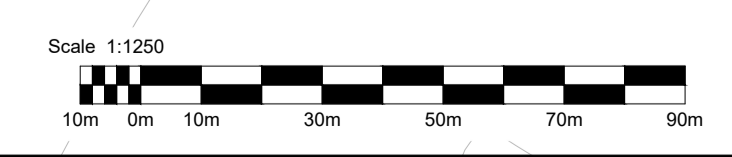


Description						
Status	Revision	Drawn	Checked	Reviewed	Authorised	Issue Date
Description						
Description						
Description						
REVISION 0						
Status	Revision	Drawn	Checked	Reviewed	Authorised	Issue Date
A1	C01	AC	SS	CDC	BM	04/12/23
Drawing Suitability						Status
APPROVED - PUBLISHED						A1

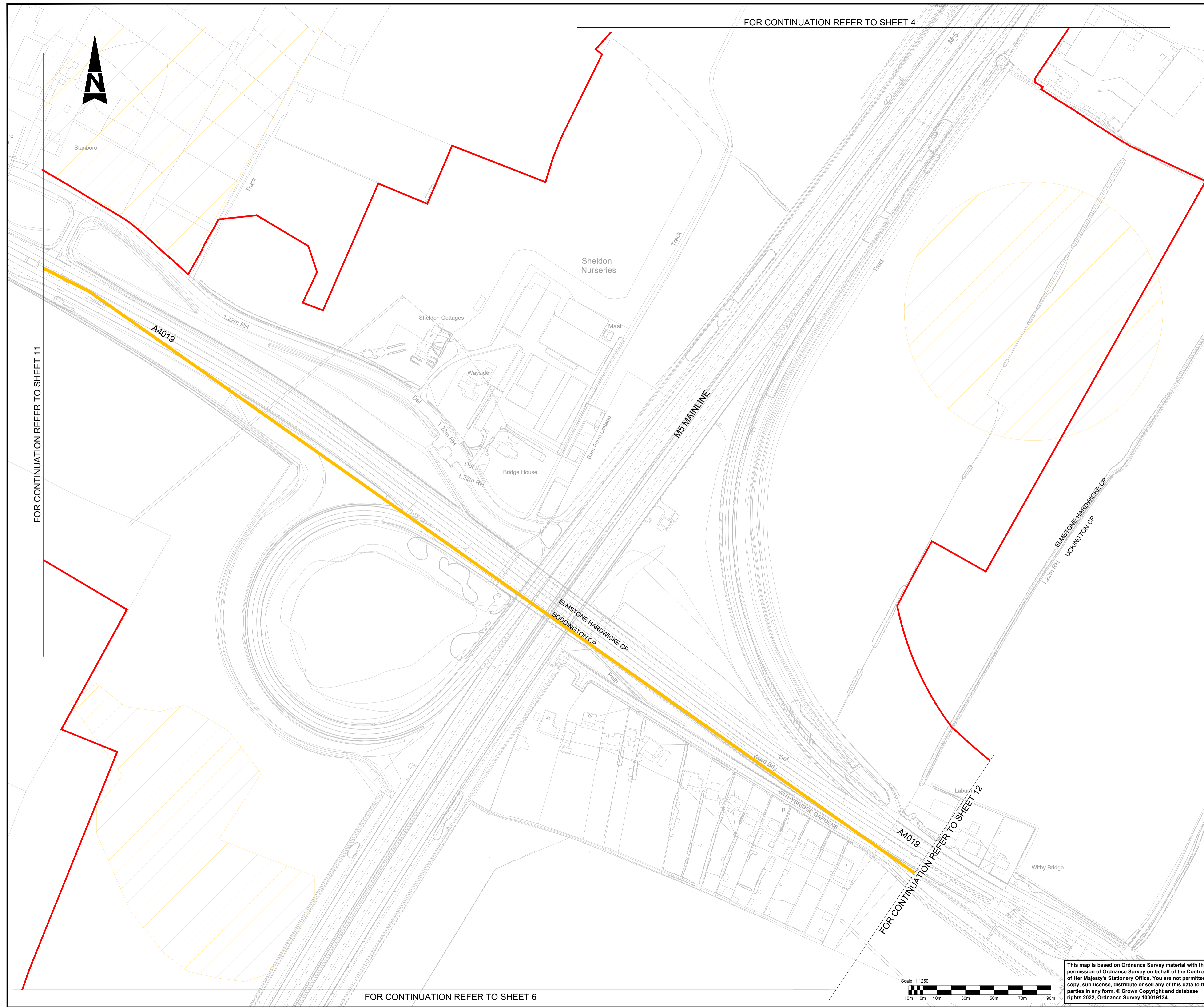
Project Title
M5 Junction 10 Improvements Scheme

Drawing Title
HISTORIC ENVIRONMENT SITES AND FEATURES PLAN - NON DESIGNATED RECEPTORS (EXCLUDING RIDGE AND FURROW) SHEET 4 OF 16

Drawing Number	GCCM5J10	ATK	EHR
	ZZ	DR	LH 000044
Original Size	A1	Scale	AS SHOWN
Project Ref. No.	5197035	Sheet	4 of 16
Rev.	C01		



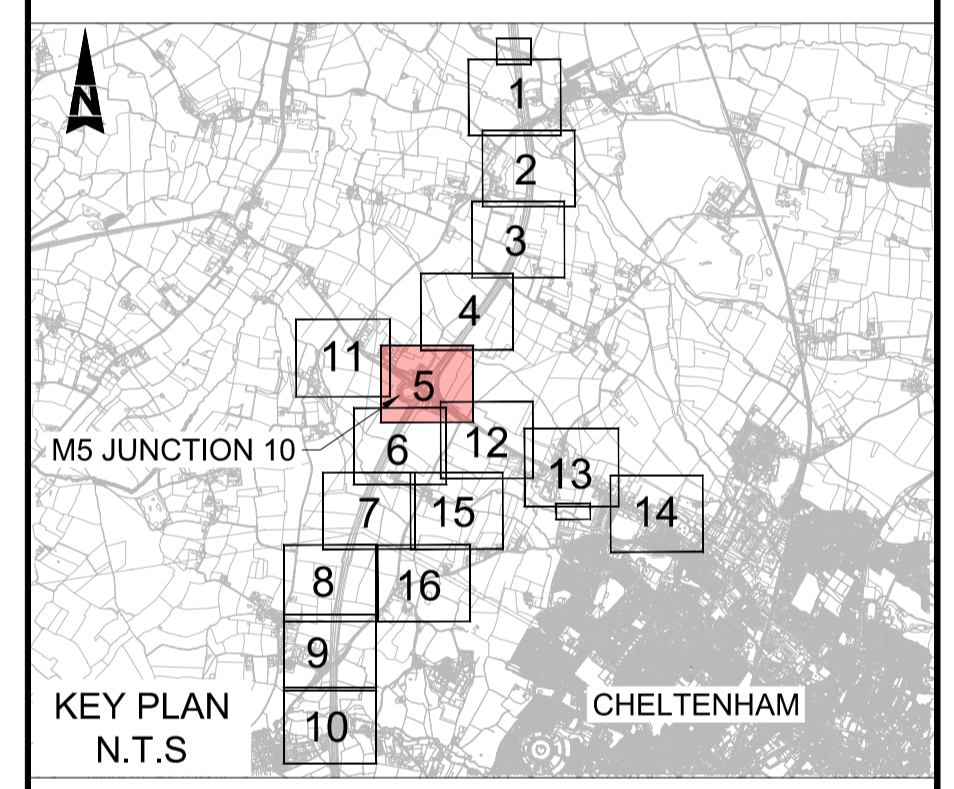
This map is based on Ordnance Survey material with the permission of Ordnance Survey on behalf of the Controller of Her Majesty's Stationary Office. You are not permitted to copy, sub-license, distribute or sell any of this data to third parties in any form. © Crown Copyright and database rights 2022, Ordnance Survey 100019134.



NOTES:

1. ALL DIMENSIONS ARE IN METRES UNLESS OTHERWISE STATED.
2. THE WORKS PLANS SHOULD BE READ IN CONJUNCTION WITH THE DEVELOPMENT CONSENT ORDER.

- KEY**
- DEVELOPMENT CONSENT ORDER (DCO) BOUNDARY
 - HISTORIC ENVIRONMENT RECORD-LOCALLY LISTED BUILDINGS
 - HISTORIC ENVIRONMENT RECORD-CANALS
 - HISTORIC ENVIRONMENT RECORDS-GENERAL
 - HISTORIC ENVIRONMENT RECORDS-MILITARY
 - HISTORIC ENVIRONMENT RECORDS-TURNPIKE



Description	Status	Revision	Drawn	Checked	Reviewed	Authorised	Issue Date

REVISION 0							
Status	Revision	Drawn	Checked	Reviewed	Authorised	Issue Date	
A1	C01	AC	SS	CDC	BM	04/12/23	

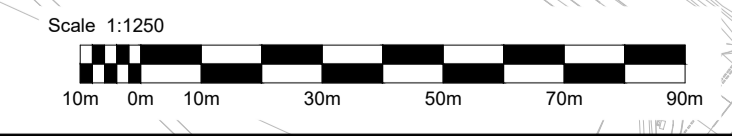
Drawing Suitability: **APPROVED - PUBLISHED** Status: **A1**

Project Title: **M5 Junction 10 Improvements Scheme**

Drawing Title: **HISTORIC ENVIRONMENT SITES AND FEATURES PLAN - NON DESIGNATED RECEPTORS (EXCLUDING RIDGE AND FURROW) SHEET 5 OF 16**

Drawing Number: **GCCM5J10** **ATK** **EHR**
ZZ **DR** **LH** **000045**

Original Size: **A1** Scale: **AS SHOWN** Project Ref. No.: **5197035** Sheet: **5 of 16** Rev: **C01**



This map is based on Ordnance Survey material with the permission of Ordnance Survey on behalf of the Controller of Her Majesty's Stationary Office. You are not permitted to copy, sub-license, distribute or sell any of this data to third parties in any form. © Crown Copyright and database rights 2022, Ordnance Survey 100019134.



ETL

FOR CONTINUATION REFER TO SHEET 5

TOWARDS M5 JUNCTION 10

M5 MAINLINE

TOWARDS M5 JUNCTION 11

Butler's Court

FOR CONTINUATION REFER TO SHEET 7

FOR CONTINUATION REFER TO SHEET 15

NOTES:

- 1. ALL DIMENSIONS ARE IN METRES UNLESS OTHERWISE STATED.
- 2. THE WORKS PLANS SHOULD BE READ IN CONJUNCTION WITH THE DEVELOPMENT CONSENT ORDER.

KEY

- DEVELOPMENT CONSENT ORDER (DCO) BOUNDARY
- HISTORIC ENVIRONMENT RECORD-LOCALLY LISTED BUILDINGS
- HISTORIC ENVIRONMENT RECORD-CANALS
- HISTORIC ENVIRONMENT RECORDS-GENERAL
- HISTORIC ENVIRONMENT RECORDS-MILITARY
- HISTORIC ENVIRONMENT RECORDS-TURNPIKE

FOR CONTINUATION REFER TO SHEET 12



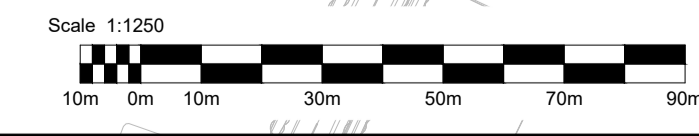
Description						
Status	Revision	Drawn	Checked	Reviewed	Authorised	Issue Date
Description						
Status	Revision	Drawn	Checked	Reviewed	Authorised	Issue Date
Description						
Status	Revision	Drawn	Checked	Reviewed	Authorised	Issue Date
Description						
Status	Revision	Drawn	Checked	Reviewed	Authorised	Issue Date
Description						
REVISION 0						
Status	Revision	Drawn	Checked	Reviewed	Authorised	Issue Date
A1	C01	AC	SS	CDC	BM	04/12/23
Drawing Suitability						Status
APPROVED - PUBLISHED						A1

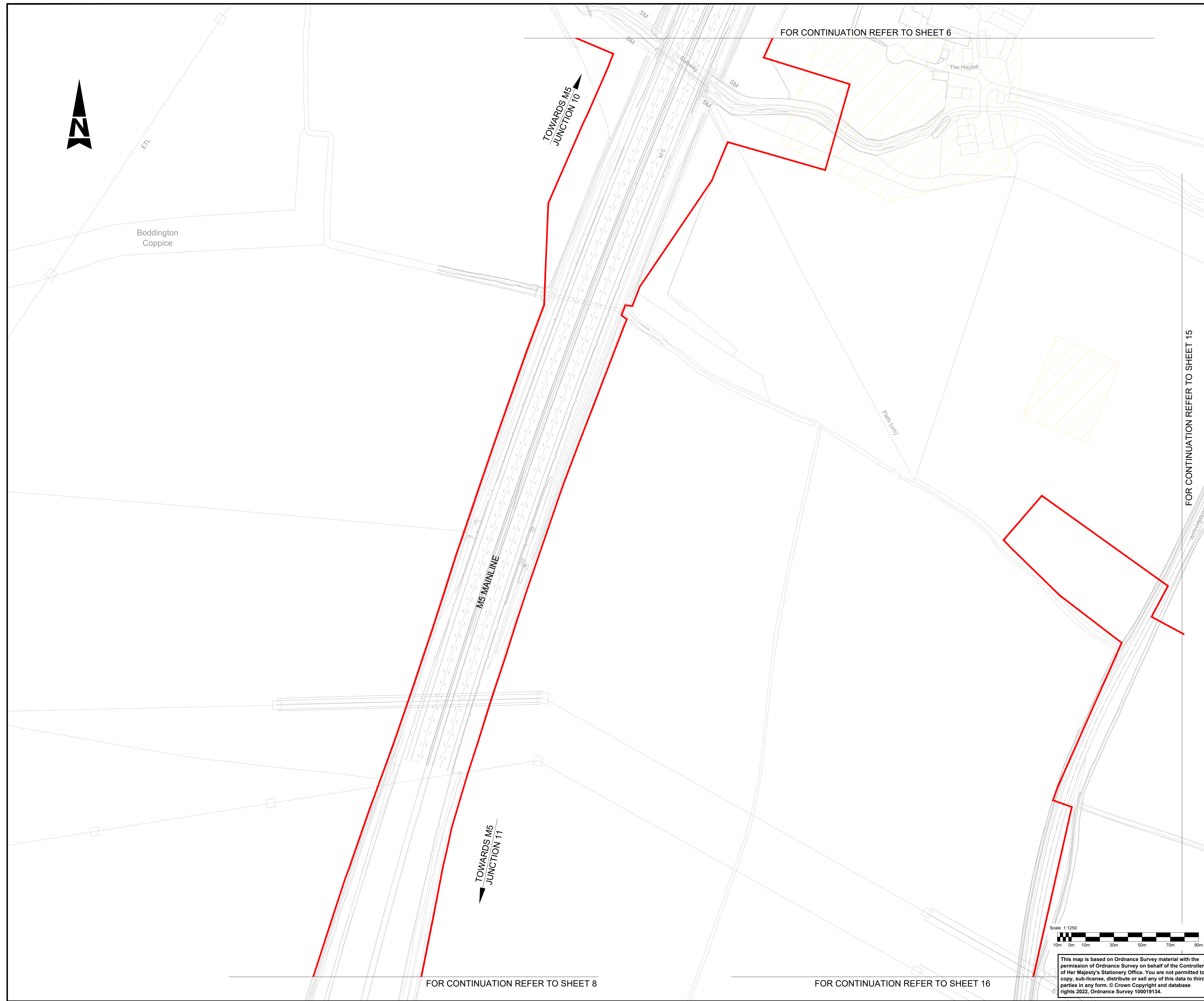
Project Title
M5 Junction 10 Improvements Scheme

Drawing Title
HISTORIC ENVIRONMENT SITES AND FEATURES PLAN - NON DESIGNATED RECEPTORS (EXCLUDING RIDGE AND FURROW) SHEET 6 OF 16

Drawing Number	
GCCM5J10	ATK EHR
ZZ	DR LH 000046
Original Size: A1	Scale: AS SHOWN
Project Ref. No: 5197035	Sheet: 6 of 16
Rev: C01	

This map is based on Ordnance Survey material with the permission of Ordnance Survey on behalf of the Controller of Her Majesty's Stationary Office. You are not permitted to copy, sub-license, distribute or sell any of this data to third parties in any form. © Crown Copyright and database rights 2022, Ordnance Survey 100019134.





FOR CONTINUATION REFER TO SHEET 6

TOWARDS M5
JUNCTION 10

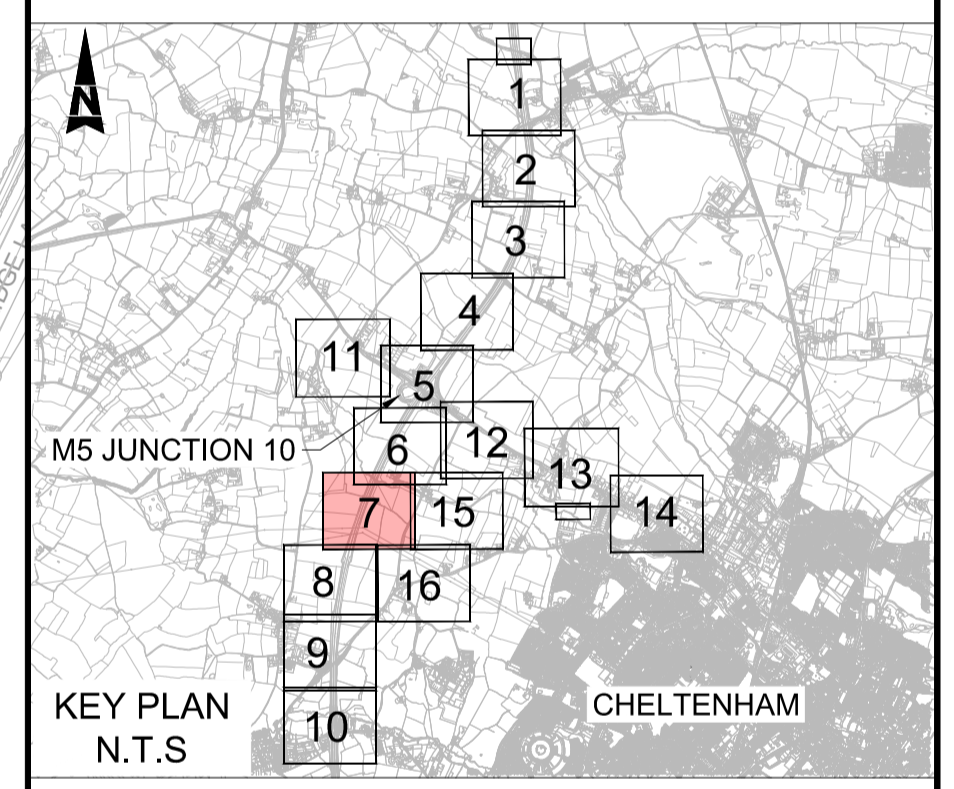
TOWARDS M5
JUNCTION 11

FOR CONTINUATION REFER TO SHEET 8

FOR CONTINUATION REFER TO SHEET 16

- NOTES:**
- ALL DIMENSIONS ARE IN METRES UNLESS OTHERWISE STATED.
 - THE WORKS PLANS SHOULD BE READ IN CONJUNCTION WITH THE DEVELOPMENT CONSENT ORDER.

- KEY**
- DEVELOPMENT CONSENT ORDER (DCO) BOUNDARY
 - HISTORIC ENVIRONMENT RECORD-LOCALLY LISTED BUILDINGS
 - HISTORIC ENVIRONMENT RECORD-CANALS
 - HISTORIC ENVIRONMENT RECORDS-GENERAL
 - HISTORIC ENVIRONMENT RECORDS-MILITARY
 - HISTORIC ENVIRONMENT RECORDS-TURNPIKE

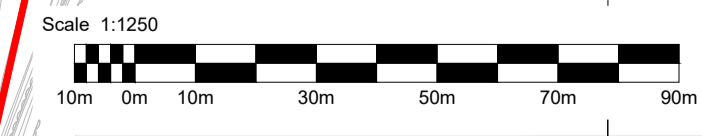


Description						
Status	Revision	Drawn	Checked	Reviewed	Authorised	Issue Date
Description						
Description						
Description						
REVISION 0						
Status	Revision	Drawn	Checked	Reviewed	Authorised	Issue Date
A1	C01	AC	SS	CDC	BM	04/12/23
Drawing Suitability						Status
APPROVED - PUBLISHED						A1

Project Title
M5 Junction 10 Improvements Scheme

Drawing Title
**HISTORIC ENVIRONMENT SITES AND FEATURES
PLAN - NON DESIGNATED RECEPTORS
(EXCLUDING RIDGE AND FURROW)
SHEET 7 OF 16**

Drawing Number	GCCM5J10	ATK	EHR
	ZZ	DR	LH 000047
Original Size	A1	Scale	AS SHOWN
Project Ref. No.	5197035	Sheet	7 of 16
Rev.	C01		



This map is based on Ordnance Survey material with the permission of Ordnance Survey on behalf of the Controller of Her Majesty's Stationary Office. You are not permitted to copy, sub-license, distribute or sell any of this data to third parties in any form. © Crown Copyright and database rights 2022, Ordnance Survey 100019134.



FOR CONTINUATION REFER TO SHEET 7

FOR CONTINUATION REFER TO SHEET 9

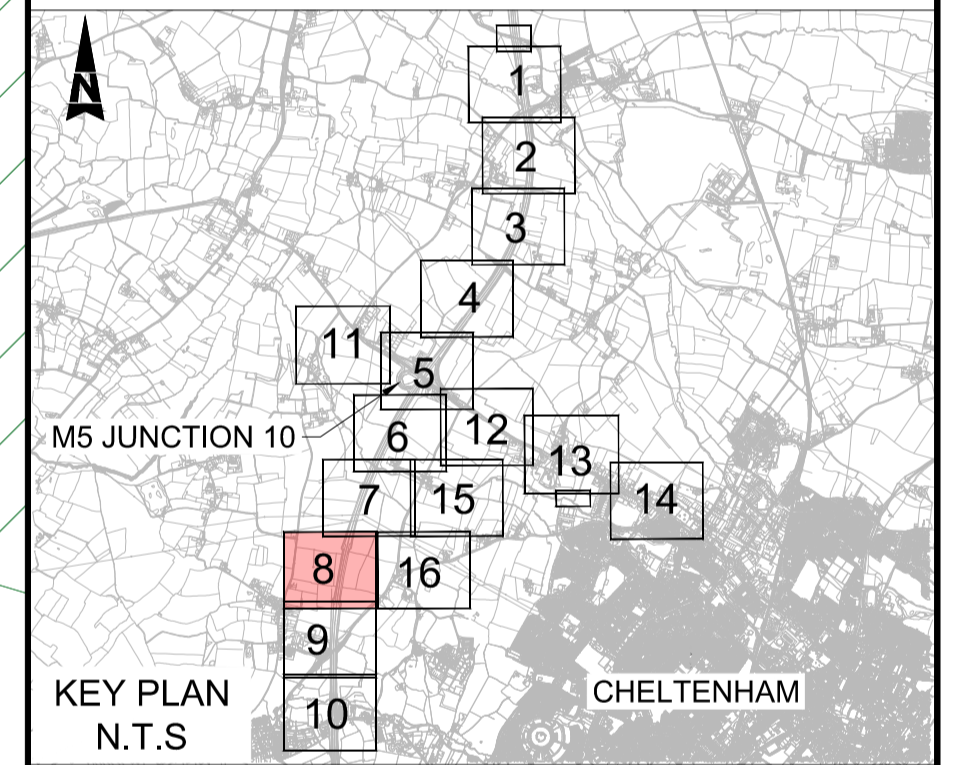


NOTES:

1. ALL DIMENSIONS ARE IN METRES UNLESS OTHERWISE STATED.
2. THE WORKS PLANS SHOULD BE READ IN CONJUNCTION WITH THE DEVELOPMENT CONSENT ORDER.

KEY

- DEVELOPMENT CONSENT ORDER (DCO) BOUNDARY
- HISTORIC ENVIRONMENT RECORD-LOCALLY LISTED BUILDINGS
- HISTORIC ENVIRONMENT RECORD-CANALS
- HISTORIC ENVIRONMENT RECORDS-GENERAL
- HISTORIC ENVIRONMENT RECORDS-MILITARY
- HISTORIC ENVIRONMENT RECORDS-TURNPIKE



Description						
Status	Revision	Drawn	Checked	Reviewed	Authorised	Issue Date
Description						
Description						
Description						
REVISION 0						
Status	Revision	Drawn	Checked	Reviewed	Authorised	Issue Date
A1	C01	AC	SS	CDC	BM	04/12/23

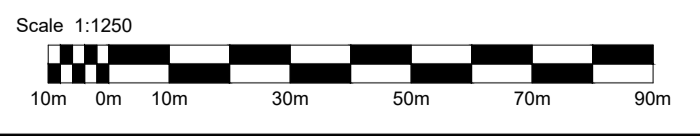
Drawing Suitability: **APPROVED - PUBLISHED** Status: **A1**

Project Title: **M5 Junction 10 Improvements Scheme**

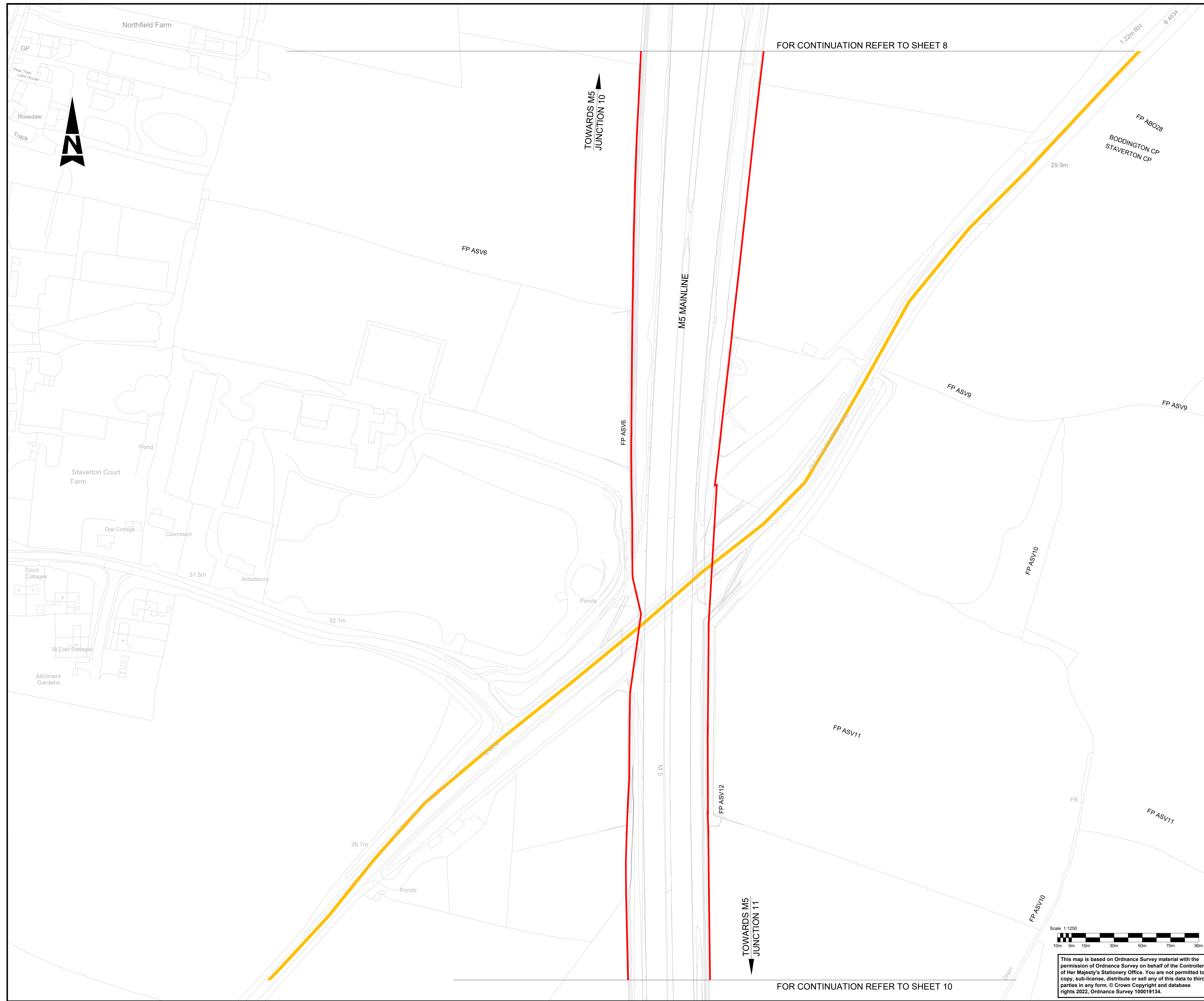
Drawing Title: **HISTORIC ENVIRONMENT SITES AND FEATURES PLAN - NON DESIGNATED RECEPTORS (EXCLUDING RIDGE AND FURROW) SHEET 8 OF 16**

Drawing Number: **GCCM5J10 ATK EHR ZZ DR LH 000048**

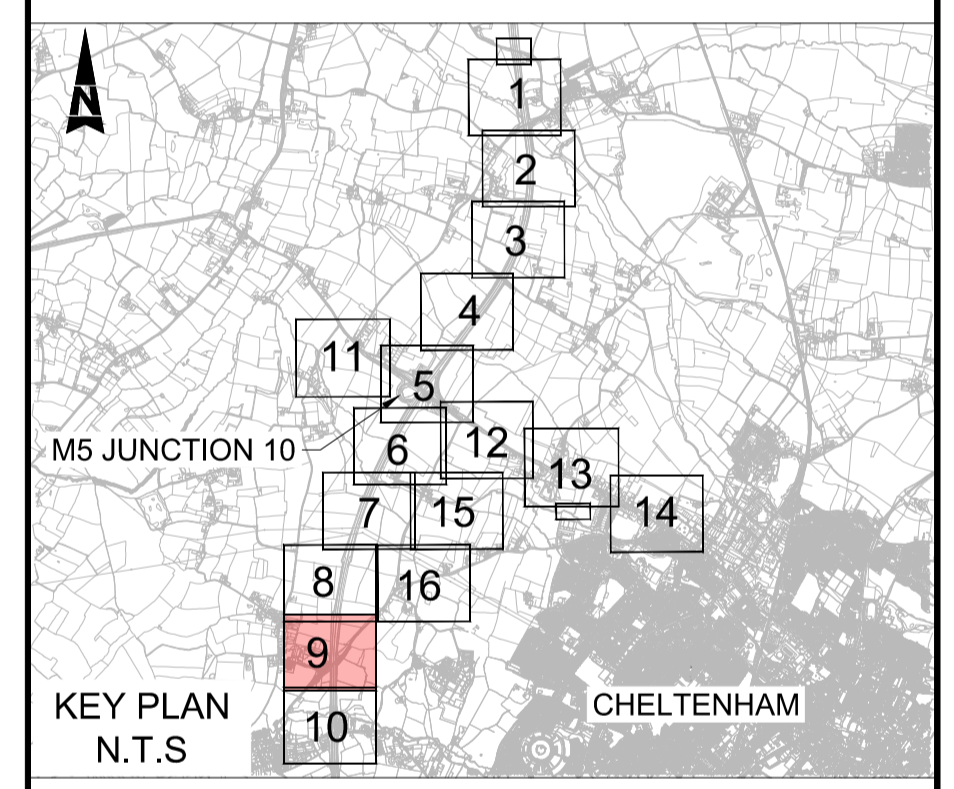
Original Size: **A1** Scale: **AS SHOWN** Project Ref. No.: **5197035** Sheet: **8 of 16** Rev: **C01**



This map is based on Ordnance Survey material with the permission of Ordnance Survey on behalf of the Controller of Her Majesty's Stationary Office. You are not permitted to copy, sub-license, distribute or sell any of this data to third parties in any form. © Crown Copyright and database rights 2022, Ordnance Survey 100019134.

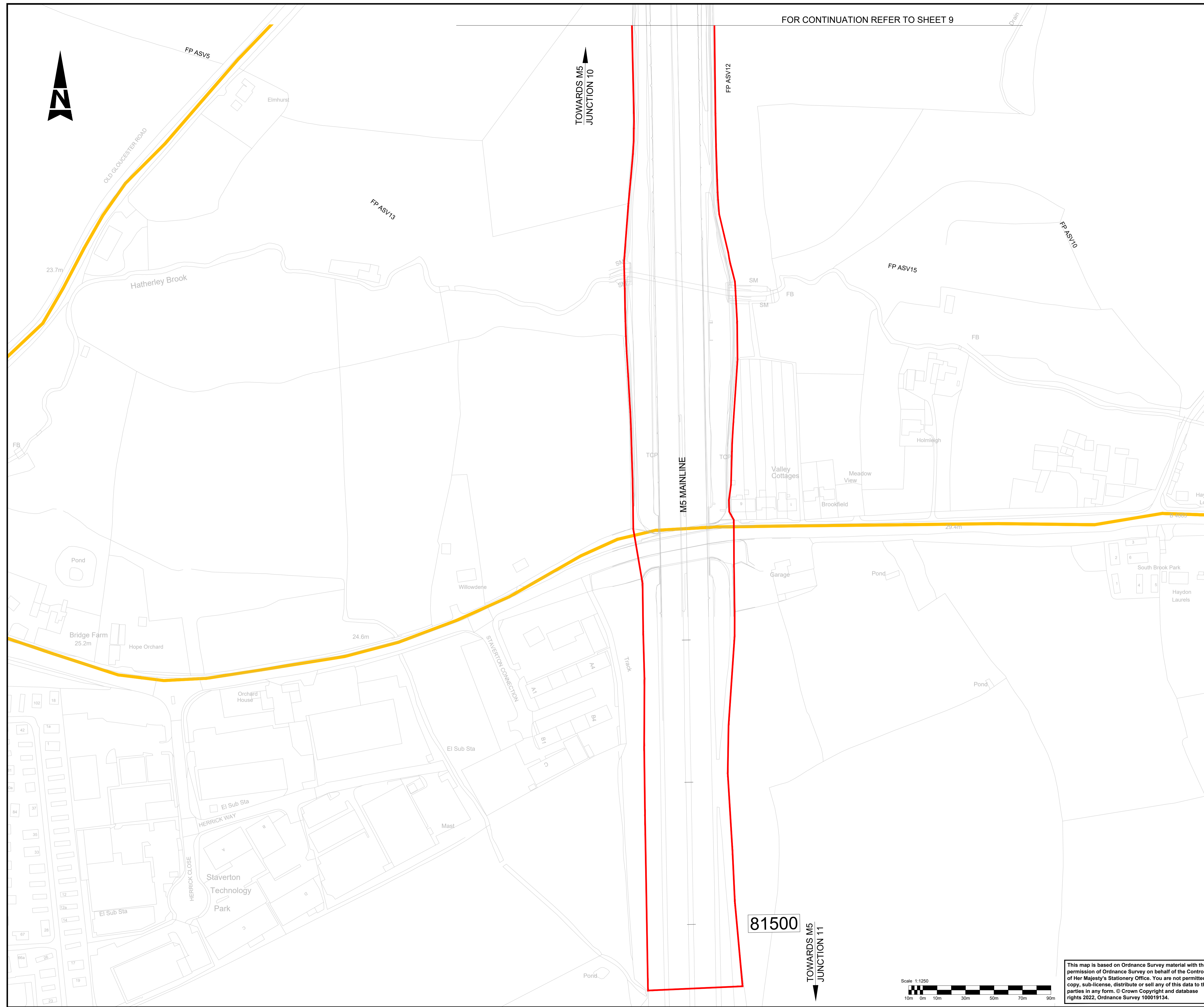


- NOTES:**
- ALL DIMENSIONS ARE IN METRES UNLESS OTHERWISE STATED.
 - THE WORKS PLANS SHOULD BE READ IN CONJUNCTION WITH THE DEVELOPMENT CONSENT ORDER.
- KEY**
- DEVELOPMENT CONSENT ORDER (DCO) BOUNDARY
 - HISTORIC ENVIRONMENT RECORD-LOCALLY LISTED BUILDINGS
 - HISTORIC ENVIRONMENT RECORD-CANALS
 - HISTORIC ENVIRONMENT RECORDS-GENERAL
 - HISTORIC ENVIRONMENT RECORDS-MILITARY
 - HISTORIC ENVIRONMENT RECORDS-TURNPIKE



Description						
Status	Revision	Drawn	Checked	Reviewed	Authorised	Issue Date
Description						
Status	Revision	Drawn	Checked	Reviewed	Authorised	Issue Date
Description						
Status	Revision	Drawn	Checked	Reviewed	Authorised	Issue Date
Description						
Status	Revision	Drawn	Checked	Reviewed	Authorised	Issue Date
Description						
REVISION 0						
Status	Revision	Drawn	Checked	Reviewed	Authorised	Issue Date
A1	C01	AC	SS	CDC	BM	04/12/23
Drawing Suitability						Status
APPROVED - PUBLISHED						A1

Project Title			
M5 Junction 10 Improvements Scheme			
Drawing Title			
HISTORIC ENVIRONMENT SITES AND FEATURES PLAN - NON DESIGNATED RECEPTORS (EXCLUDING RIDGE AND FURROW) SHEET 9 OF 16			
Drawing Number			
GCCM5J10	ATK	EHR	
ZZ	DR	LH	000049
Original Size: A1	Scale: AS SHOWN	Project Ref. No.: 5197035	Sheet: 9 of 16 Rev: C01

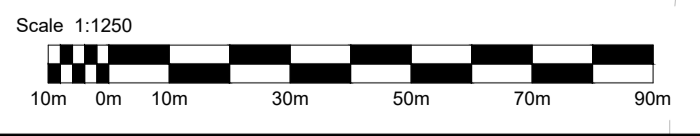


FOR CONTINUATION REFER TO SHEET 9

TOWARDS M5 JUNCTION 10

TOWARDS M5 JUNCTION 11

81500



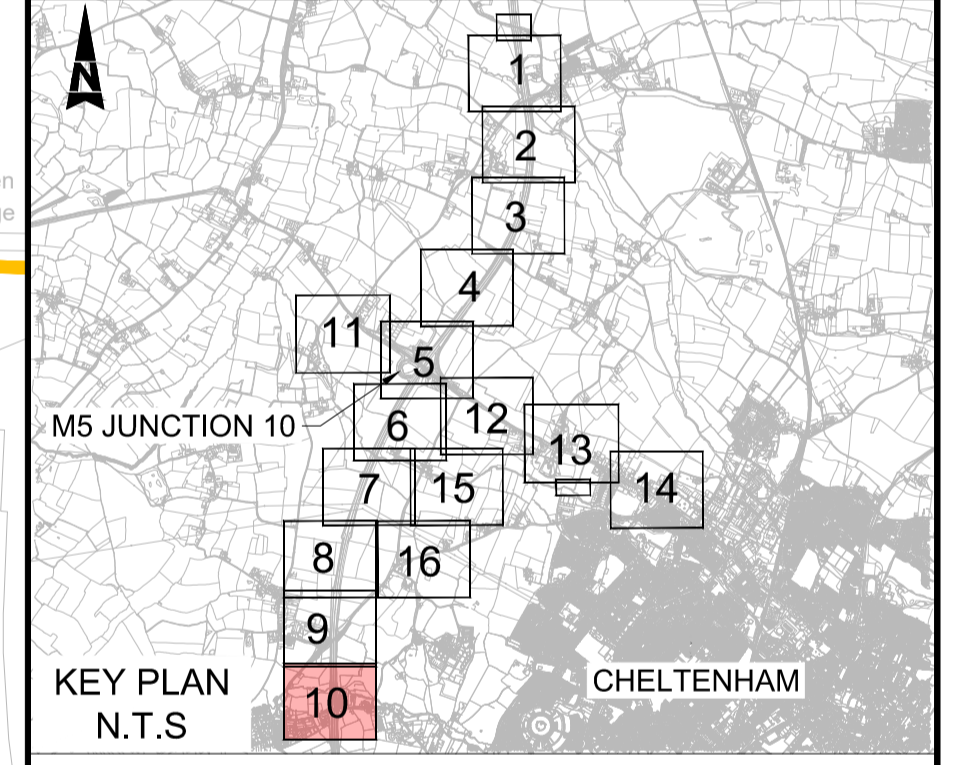
This map is based on Ordnance Survey material with the permission of Ordnance Survey on behalf of the Controller of Her Majesty's Stationary Office. You are not permitted to copy, sub-license, distribute or sell any of this data to third parties in any form. © Crown Copyright and database rights 2022, Ordnance Survey 100019134.

NOTES:

1. ALL DIMENSIONS ARE IN METRES UNLESS OTHERWISE STATED.
2. THE WORKS PLANS SHOULD BE READ IN CONJUNCTION WITH THE DEVELOPMENT CONSENT ORDER.

KEY

- DEVELOPMENT CONSENT ORDER (DCO) BOUNDARY
- HISTORIC ENVIRONMENT RECORD-LOCALLY LISTED BUILDINGS
- HISTORIC ENVIRONMENT RECORD-CANALS
- HISTORIC ENVIRONMENT RECORDS-GENERAL
- HISTORIC ENVIRONMENT RECORDS-MILITARY
- HISTORIC ENVIRONMENT RECORDS-TURNPIKE



Description						
Status	Revision	Drawn	Checked	Reviewed	Authorised	Issue Date

Description						
Status	Revision	Drawn	Checked	Reviewed	Authorised	Issue Date

Description						
Status	Revision	Drawn	Checked	Reviewed	Authorised	Issue Date

Description						
Status	Revision	Drawn	Checked	Reviewed	Authorised	Issue Date

REVISION 0						
Status	Revision	Drawn	Checked	Reviewed	Authorised	Issue Date

A1	C01	AC	SS	CDC	BM	04/12/23
----	-----	----	----	-----	----	----------

Drawing Suitability					Status
APPROVED - PUBLISHED					A1

Project Title	
M5 Junction 10 Improvements Scheme	

Drawing Title	
HISTORIC ENVIRONMENT SITES AND FEATURES PLAN - NON DESIGNATED RECEPTORS (EXCLUDING RIDGE AND FURROW) SHEET 10 OF 16	

Drawing Number	
GCCM5J10	ATK EHR
ZZ	DR LH 000050

Original Size: A1	Scale: AS SHOWN	Project Ref. No.: 5197035	Sheet: 10 of 16	Rev: C01
--------------------------	------------------------	----------------------------------	------------------------	-----------------

5th Floor, Block 5
Shire Hall
Bearland
Gloucester
GL1 2TH