

M5 Junction 10 Improvements Scheme

Environmental Statement

Appendix 10.8

Geology and Soils chapter figures

TR010063 - APP 6.15

Regulation 5 (2) (a)

Planning Act 2008

Infrastructure Planning (Applications: Prescribed Forms and Procedure) Regulations 2009

Volume 6
December 2023

THIS PAGE IS LEFT INTENTIONALLY BLANK

Infrastructure Planning Planning Act 2008

The Infrastructure Planning (Applications: Prescribed Forms and Procedure) Regulations 2009

M5 Junction 10 Improvements Scheme Development Consent Order 202[x]

6.15 Environmental Statement

Appendix 10.8

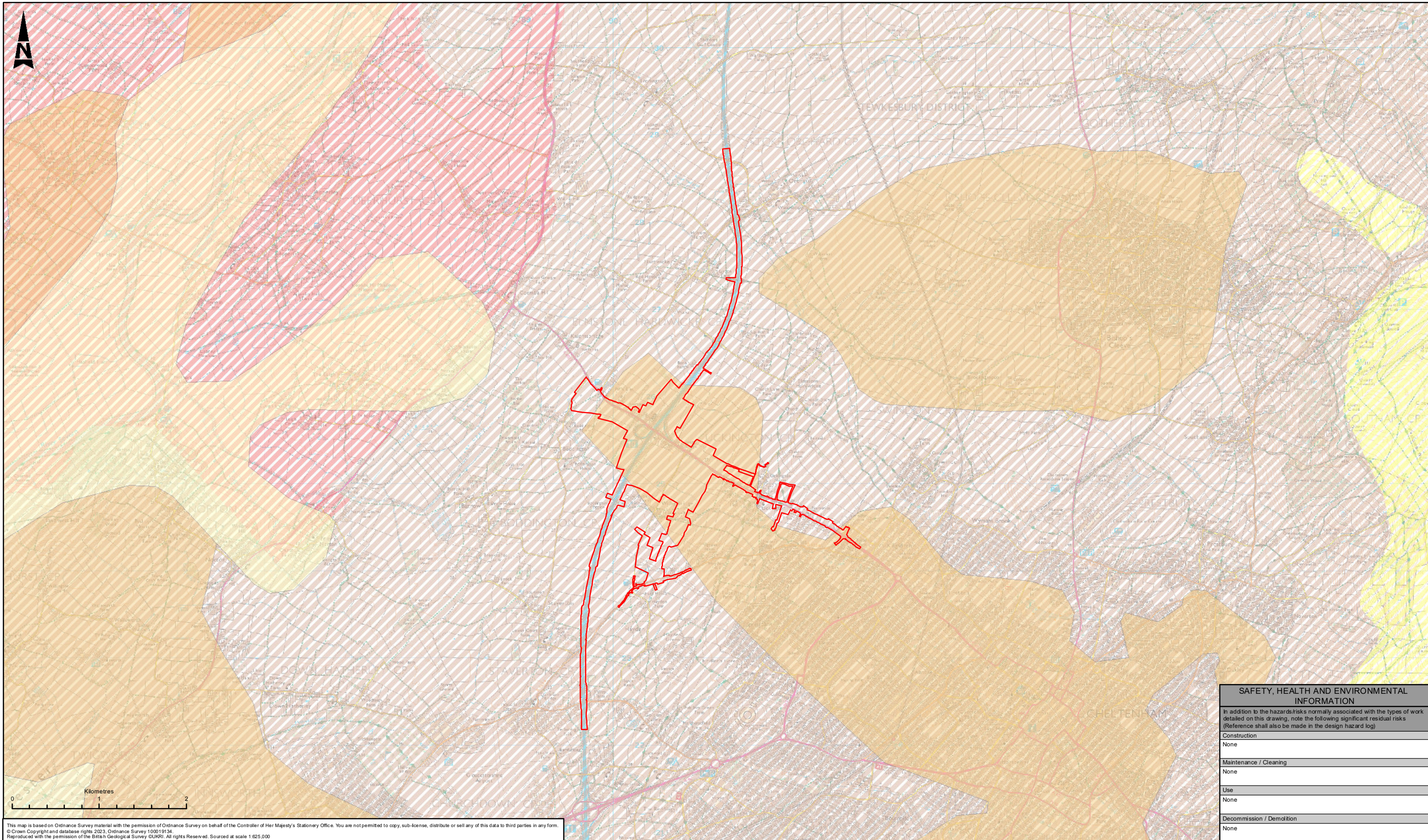
Geology and Soils chapter figures

Regulation Number:	Regulation 5(2)(a)
Planning Inspectorate Scheme Reference	TR010063
Application Document Reference	TR010063/APP/6.15
Author:	M5 Junction 10 Improvements Scheme Project Team

Version	Date	Status of Version
Rev 0	December 2023	DCO Application

1. Schedule of figures included in this application document

Figure reference	Document title	Sheet	Document number	Revision
10-1	Geology of the study area	1 of 1	GCCM5J10-ATK-EGT-ZZ-GS-GI-000002	0
10-2	Ground investigation location plan	1 of 8	GCCM5J10-ATK-EGT-ZZ-GS-GI-000003	0
10-2	Ground investigation location plan	2 of 8	GCCM5J10-ATK-EGT-ZZ-GS-GI-000003	0
10-2	Ground investigation location plan	3 of 8	GCCM5J10-ATK-EGT-ZZ-GS-GI-000003	0
10-2	Ground investigation location plan	4 of 8	GCCM5J10-ATK-EGT-ZZ-GS-GI-000003	0
10-2	Ground investigation location plan	5 of 8	GCCM5J10-ATK-EGT-ZZ-GS-GI-000003	0
10-2	Ground investigation location plan	6 of 8	GCCM5J10-ATK-EGT-ZZ-GS-GI-000003	0
10-2	Ground investigation location plan	7 of 8	GCCM5J10-ATK-EGT-ZZ-GS-GI-000003	0
10-2	Ground investigation location plan	8 of 8	GCCM5J10-ATK-EGT-ZZ-GS-GI-000003	0
10-3	Agricultural land classification	1 of 1	GCCM5J10-ATK-EGT-ZZ-GS-GI-000001	0



This map is based on Ordnance Survey material with the permission of Ordnance Survey on behalf of the Controller of Her Majesty's Stationery Office. You are not permitted to copy, sub-licence, distribute or sell any of this data to third parties in any form.
 © Crown Copyright and database rights 2023, Ordnance Survey 100019134.
 Reproduced with the permission of the British Geological Survey GUKRI. All rights Reserved. Sourced at scale 1:625,000

LEGEND	
	ORDER LIMITS
BEDROCK GEOLOGY	
	INFERIOR OOLITE GROUP - LIMESTONE, SANDSTONE, SILTSTONE AND MUDSTONE
	LIAS GROUP - MUDSTONE, SILTSTONE, LIMESTONE AND SANDSTONE
	TRIASSIC ROCKS (UNDIFFERENTIATED) - MUDSTONE, SILTSTONE AND SANDSTONE
SUPERFICIAL DEPOSITS	
	RIVER TERRACE DEPOSITS (UNDIFFERENTIATED) - SAND AND GRAVEL
	ALLUVIUM - CLAY, SILT AND SAND

NOTE: This map is based on the 1:625,000 scale British Geological Survey (BGS) dataset which is a larger scale than that used in the baseline assessment. It should be noted that the geology has been generalised and does not reflect the geological sub-divisions which have been mapped at a more local scale. Further detail is available at the BGS reference provided within the baseline section of the report and the BGS link below.
<https://www.bgs.ac.uk/map-viewers/geoidex-onshore/>

SAFETY, HEALTH AND ENVIRONMENTAL INFORMATION	
In addition to the hazards/risks normally associated with the types of work detailed on this drawing, note the following significant residual risks (Reference shall also be made in the design hazard log)	
Construction	None
Maintenance / Cleaning	None
Use	None
Decommission / Demolition	None

Description		Drawing Suitability		Status	
Status	Revision	Drawn	Checked	Reviewed	Authorised
Description		PUBLISHED		A1	
Status	Revision	Drawn	Checked	Reviewed	Authorised
Description		ATKINS		5th Floor, Block 5 Shire Hall Bearland Gloucester GL1 2TH	
Description		Member of the SNC-Lavalin Group		Tel: 08000 514 514	
Description		Copyright © Atkins Limited (2023)		www.atkinsglobal.com	
Description		Client		Gloucestershire COUNTY COUNCIL	
Status	Revision	Drawn	Checked	Reviewed	Authorised
Description		PUBLISHED		Project Title	
Status	Revision	Drawn	Checked	Reviewed	Authorised
A1	P01	JM	MB	CC	LJ
Description		Drawing Title		M5 Junction 10 Improvements Scheme	
Description		Drawing Number		GCCM5J10 - ATK - EGT ZZ - GS - GI - 000002	
Description		Project		Originator	
Description		Volume		Sheet	
Description		Number		Rev	
Description		Scale		1:40,000	
Description		Project Ref		5214106	
Description		Sheet		1 of 1	
Description		Rev		P01	

Project Information	
Project Title	M5 Junction 10 Improvements Scheme
Drawing Title	FIGURE 10-1 GEOLOGY OF THE STUDY AREA
Drawing Number	GCCM5J10 - ATK - EGT ZZ - GS - GI - 000002
Project	Originator
Volume	Sheet
Number	Rev
Scale	1:40,000
Project Ref	5214106
Sheet	1 of 1
Rev	P01



This map is based on Ordnance Survey material with the permission of Ordnance Survey on behalf of the Controller of Her Majesty's Stationery Office. You are not permitted to copy, sub-licence, distribute or sell any of this data to third parties in any form.
 © Crown Copyright and database rights 2023, Ordnance Survey 100019134.
 Aerial Imagery: Contains OS data © Crown Copyright and database right 2020, Source: Esri, Maxar, Earthstar Geographics, and the GIS User Community

SAFETY, HEALTH AND ENVIRONMENTAL INFORMATION	
In addition to the hazards/risks normally associated with the types of work detailed on this drawing, note the following significant residual risks (Reference shall also be made in the design hazard log)	
Construction	None
Maintenance / Cleaning	None
Use	None
Decommission / Demolition	None

LEGEND	
	ORDER LIMITS
GI LOCATIONS	
	BOREHOLE (DYNAMIC SAMPLE / ROTARY CORE)
	BOREHOLE (DYNAMIC SAMPLE)
	TRIAL PIT
	INSPECTION PIT
	SURFACE WATER SAMPLE
	WINDOW SAMPLE

Description	Status	Revision	Drawn	Checked	Reviewed	Authorised	Issue Date
PUBLISHED							

ATKINS
 Member of the SNC-Lavalin Group
 5th Floor, Block 5
 Shire Hall
 Bearland
 Gloucester
 GL1 2TH
 Tel: 08000 514 514
 Copyright © Atkins Limited (2023) www.atkinsglobal.com

Project Title		M5 Junction 10 Improvements Scheme	
Drawing Title		FIGURE 10-2 GROUND INVESTIGATION LOCATION PLAN	
Drawing Number		GCCM5J10 - ATK - EGT ZZ - GS - GI - 000003	
Original Size: A3	Scale: 1:5,000	Project Ref: 5214106	Sheet: 1 of 8 Rev: P01



This map is based on Ordnance Survey material with the permission of Ordnance Survey on behalf of the Controller of Her Majesty's Stationery Office. You are not permitted to copy, sub-licence, distribute or sell any of this data to third parties in any form.
 © Crown Copyright and database rights 2023, Ordnance Survey 100019134.
 Aerial Imagery: Contains OS data © Crown Copyright and database right 2020, Source: Esri, Maxar, Earthstar Geographics, and the GIS User Community

SAFETY, HEALTH AND ENVIRONMENTAL INFORMATION	
In addition to the hazards/risks normally associated with the types of work detailed on this drawing, note the following significant residual risks (Reference shall also be made in the design hazard log)	
Construction	None
Maintenance / Cleaning	None
Use	None
Decommission / Demolition	None

LEGEND	
	ORDER LIMITS
GI LOCATIONS	
	BOREHOLE (DYNAMIC SAMPLE / ROTARY CORE)
	BOREHOLE (DYNAMIC SAMPLE)
	TRIAL PIT
	INSPECTION PIT
	SURFACE WATER SAMPLE
	WINDOW SAMPLE

Description		Drawing Suitability	Status	Project Title
PUBLISHED		PUBLISHED	A1	M5 Junction 10 Improvements Scheme
Status Revision Drawn Checked Reviewed Authorised Issue Date		Drawing Title		
Description		5th Floor, Block 5 Shire Hall Bearland Gloucester GL1 2TH Tel: 08000 514 514 Copyright © Atkins Limited (2023) www.atkinsglobal.com		
Description		Drawing Number		
PUBLISHED		Project: GCCM5J10 - ATK - EGT Originator: ZZ - GS - GI - 000003 Volume:		
Status Revision Drawn Checked Reviewed Authorised Issue Date		Original Size: A3 Scale: 1:5,000 Project Ref: 5214106 Sheet: 2 of 8 Rev: P01		



This map is based on Ordnance Survey material with the permission of Ordnance Survey on behalf of the Controller of Her Majesty's Stationery Office. You are not permitted to copy, sub-licence, distribute or sell any of this data to third parties in any form.
 © Crown Copyright and database rights 2023, Ordnance Survey 100019134.
 Aerial Imagery: Contains OS data © Crown Copyright and database right 2020, Source: Esri, Maxar, Earthstar Geographics, and the GIS User Community

SAFETY, HEALTH AND ENVIRONMENTAL INFORMATION	
In addition to the hazards/risks normally associated with the types of work detailed on this drawing, note the following significant residual risks (Reference shall also be made in the design hazard log)	
Construction	None
Maintenance / Cleaning	None
Use	None
Decommission / Demolition	None

LEGEND	
	ORDER LIMITS
GI LOCATIONS	
	BOREHOLE (DYNAMIC SAMPLE / ROTARY CORE)
	BOREHOLE (DYNAMIC SAMPLE)
	TRIAL PIT
	INSPECTION PIT
	SURFACE WATER SAMPLE
	WINDOW SAMPLE

Description		Drawing Suitability	Status	Project Title
PUBLISHED		PUBLISHED	A1	M5 Junction 10 Improvements Scheme
Status Revision Drawn Checked Reviewed Authorised Issue Date		Drawing Title		
Description		5th Floor, Block 5 Shire Hall Bearland Gloucester GL1 2TH Tel: 08000 514 514 Copyright © Atkins Limited (2023) www.atkinsglobal.com		
Status Revision Drawn Checked Reviewed Authorised Issue Date		Drawing Number		
Description		Project: GCCM5J10 - ATK - EGT Originator: ZZ - GS - GI - 000003 Volume: 3 of 8		
Status Revision Drawn Checked Reviewed Authorised Issue Date		Original Size: A3 Scale: 1:5,000 Project Ref: 5214106 Sheet: 3 of 8 Rev: P01		



This map is based on Ordnance Survey material with the permission of Ordnance Survey on behalf of the Controller of Her Majesty's Stationery Office. You are not permitted to copy, sub-licence, distribute or sell any of this data to third parties in any form.
 © Crown Copyright and database rights 2023, Ordnance Survey 100019134.
 Aerial Imagery: Contains OS data © Crown Copyright and database right 2020, Source: Esri, Maxar, Earthstar Geographics, and the GIS User Community

LEGEND	
	ORDER LIMITS
GI LOCATIONS	
	BOREHOLE (DYNAMIC SAMPLE / ROTARY CORE)
	BOREHOLE (DYNAMIC SAMPLE)
	TRIAL PIT
	INSPECTION PIT
	SURFACE WATER SAMPLE
	WINDOW SAMPLE

Description	Status	Revision	Drawn	Checked	Reviewed	Authorised	Issue Date
PUBLISHED							
PUBLISHED							
PUBLISHED							
PUBLISHED							
PUBLISHED							
PUBLISHED							
PUBLISHED							
PUBLISHED							
PUBLISHED							
PUBLISHED							

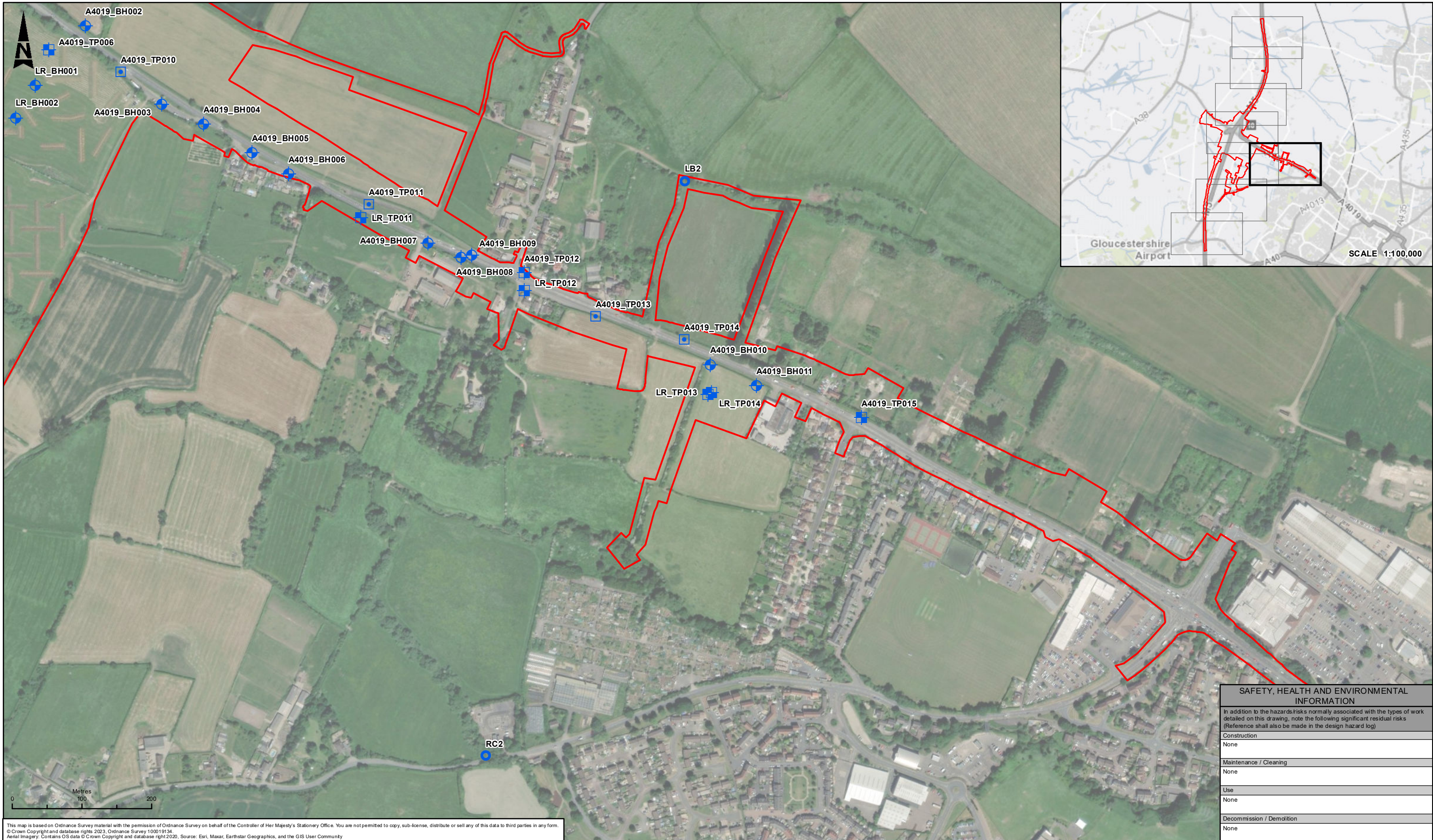
Drawing Suitability
PUBLISHED

ATKINS
 Member of the SNC-Lavalin Group
 5th Floor, Block 5
 Shire Hall
 Bearland
 Gloucester
 GL1 2TH
 Tel: 08000 514 514
 Copyright © Atkins Limited (2023) www.atkinsglobal.com

Client

 Gloucestershire
 COUNTY COUNCIL

SAFETY, HEALTH AND ENVIRONMENTAL INFORMATION	
In addition to the hazards/risks normally associated with the types of work detailed on this drawing, note the following significant residual risks (Reference shall also be made in the design hazard log)	
Construction	None
Maintenance / Cleaning	None
Use	None
Decommission / Demolition	None
Project Title M5 Junction 10 Improvements Scheme	
Drawing Title FIGURE 10-2 GROUND INVESTIGATION LOCATION PLAN	
Drawing Number Project: GCCM5J10 - ATK - EGT Originator: ZZ - GS - GI - 000003 Volume: 4 of 8	
Original Size: A3	Scale: 1:5,000
Project Ref: 5214106	Sheet: 4 of 8
Rev: P01	Status: A1



This map is based on Ordnance Survey material with the permission of Ordnance Survey on behalf of the Controller of Her Majesty's Stationery Office. You are not permitted to copy, sub-licence, distribute or sell any of this data to third parties in any form.
 © Crown Copyright and database rights 2023, Ordnance Survey 100019134.
 Aerial Imagery: Contains OS data © Crown Copyright and database right 2020, Source: Esri, Maxar, Earthstar Geographics, and the GIS User Community

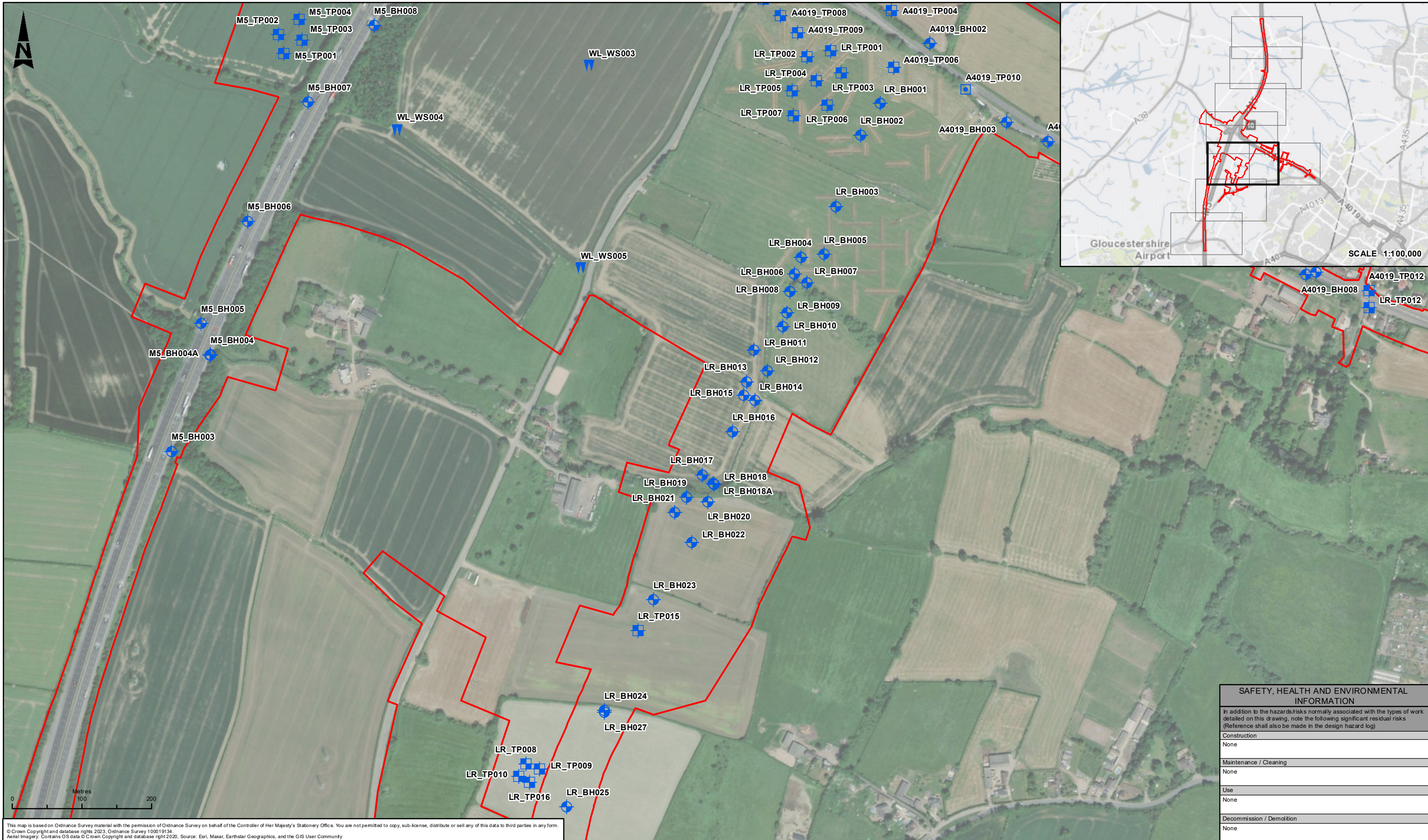
SAFETY, HEALTH AND ENVIRONMENTAL INFORMATION	
In addition to the hazards/risks normally associated with the types of work detailed on this drawing, note the following significant residual risks (Reference shall also be made in the design hazard log)	
Construction	None
Maintenance / Cleaning	None
Use	None
Decommission / Demolition	None

LEGEND	
	ORDER LIMITS
GI LOCATIONS	
	BOREHOLE (DYNAMIC SAMPLE / ROTARY CORE)
	BOREHOLE (DYNAMIC SAMPLE)
	TRIAL PIT
	INSPECTION PIT
	SURFACE WATER SAMPLE
	WINDOW SAMPLE

Description	Status	Revision	Drawn	Checked	Reviewed	Authorised	Issue Date
PUBLISHED							

ATKINS
 Member of the SNC-Lavalin Group
 5th Floor, Block 5
 Shire Hall
 Bearland
 Gloucester
 GL1 2TH
 Tel: 08000 514 514
 Copyright © Atkins Limited (2023) www.atkinsglobal.com

Project Title		M5 Junction 10 Improvements Scheme	
Drawing Title		FIGURE 10-2 GROUND INVESTIGATION LOCATION PLAN	
Drawing Number		Project: GCCM5J10 - ATK - EGT ZZ - GS - GI - 000003	
Original Size: A3	Scale: 1:5,000	Project Ref: 5214106	Sheet: 5 of 8 Rev: P01



This map is based on Ordnance Survey material with the permission of Ordnance Survey on behalf of the Controller of Her Majesty's Stationery Office. You are not permitted to copy, sub-licence, distribute or sell any of this data to third parties in any form.
 © Crown Copyright and database rights 2023, Ordnance Survey 100019134.
 Aerial Imagery: Contains OS data © Crown Copyright and database right 2020, Source: Esri, Maxar, Earthstar Geographics, and the GIS User Community

SAFETY, HEALTH AND ENVIRONMENTAL INFORMATION	
In addition to the hazards/risks normally associated with the types of work detailed on this drawing, note the following significant residual risks (Reference shall also be made in the design hazard log)	
Construction	None
Maintenance / Cleaning	None
Use	None
Decommission / Demolition	None

LEGEND	
	ORDER LIMITS
GI LOCATIONS	
	BOREHOLE (DYNAMIC SAMPLE / ROTARY CORE)
	BOREHOLE (DYNAMIC SAMPLE)
	TRIAL PIT
	INSPECTION PIT
	SURFACE WATER SAMPLE
	WINDOW SAMPLE

Description	Status	Revision	Drawn	Checked	Reviewed	Authorised	Issue Date
PUBLISHED							
PUBLISHED							
PUBLISHED							
PUBLISHED							
PUBLISHED							
PUBLISHED							
PUBLISHED							

ATKINS
 Member of the SNC-Lavalin Group
 5th Floor, Block 5
 Shire Hall
 Bearland
 Gloucester
 GL1 2TH
 Tel: 08000 514 514
 Copyright © Atkins Limited (2023) www.atkinsglobal.com

Gloucestershire COUNTY COUNCIL

Project Title		M5 Junction 10 Improvements Scheme	
Drawing Title		FIGURE 10-2 GROUND INVESTIGATION LOCATION PLAN	
Drawing Number		Project: GCCM5J10 - ATK - EGT Originator: ZZ - GS - GI - 000003 Volume: 6 of 8	
Original Size: A3	Scale: 1:5,000	Project Ref: 5214106	Rev: P01



This map is based on Ordnance Survey material with the permission of Ordnance Survey on behalf of the Controller of Her Majesty's Stationery Office. You are not permitted to copy, sub-licence, distribute or sell any of this data to third parties in any form.
 © Crown Copyright and database rights 2023, Ordnance Survey 100019134.
 Aerial Imagery: Contains OS data © Crown Copyright and database right 2020, Source: Esri, Maxar, Earthstar Geographics, and the GIS User Community

SAFETY, HEALTH AND ENVIRONMENTAL INFORMATION	
In addition to the hazards/risks normally associated with the types of work detailed on this drawing, note the following significant residual risks (Reference shall also be made in the design hazard log)	
Construction	None
Maintenance / Cleaning	None
Use	None
Decommission / Demolition	None

LEGEND	
	ORDER LIMITS
GI LOCATIONS	
	BOREHOLE (DYNAMIC SAMPLE / ROTARY CORE)
	BOREHOLE (DYNAMIC SAMPLE)
	TRIAL PIT
	INSPECTION PIT
	SURFACE WATER SAMPLE
	WINDOW SAMPLE

Description		Drawing Suitability	Status	Project Title
PUBLISHED		PUBLISHED	A1	M5 Junction 10 Improvements Scheme
Status				Drawing Title
Revision		5th Floor, Block 5 Shire Hall Bearland Gloucester GL1 2TH Tel: 08000 514 514 Copyright © Atkins Limited (2023) www.atkinsglobal.com		FIGURE 10-2 GROUND INVESTIGATION LOCATION PLAN
Drawn				Drawing Number
Checked		Project: GCCM5J10 - ATK - EGT Originator: ZZ - GS - GI - 000003 Volume:		Location: Type: Rate: Number:
Reviewed		Client:		Original Size: A3 Scale: 1:5,000 Project Ref: 5214106 Sheet: 7 of 8 Rev: P01
Authorised		Issue Date: 22/08/23		



This map is based on Ordnance Survey material with the permission of Ordnance Survey on behalf of the Controller of Her Majesty's Stationary Office. You are not permitted to copy, sub-licence, distribute or sell any of this data to third parties in any form.
 © Crown Copyright and database rights 2023, Ordnance Survey 100019134.
 Aerial Imagery: Contains OS data © Crown Copyright and database right 2020, Source: Esri, Maxar, Earthstar Geographics, and the GIS User Community

SAFETY, HEALTH AND ENVIRONMENTAL INFORMATION	
In addition to the hazards/risks normally associated with the types of work detailed on this drawing, note the following significant residual risks (Reference shall also be made in the design hazard log)	
Construction	None
Maintenance / Cleaning	None
Use	None
Decommission / Demolition	None

LEGEND	
	ORDER LIMITS
GI LOCATIONS	
	BOREHOLE (DYNAMIC SAMPLE / ROTARY CORE)
	BOREHOLE (DYNAMIC SAMPLE)
	TRIAL PIT
	INSPECTION PIT
	SURFACE WATER SAMPLE
	WINDOW SAMPLE

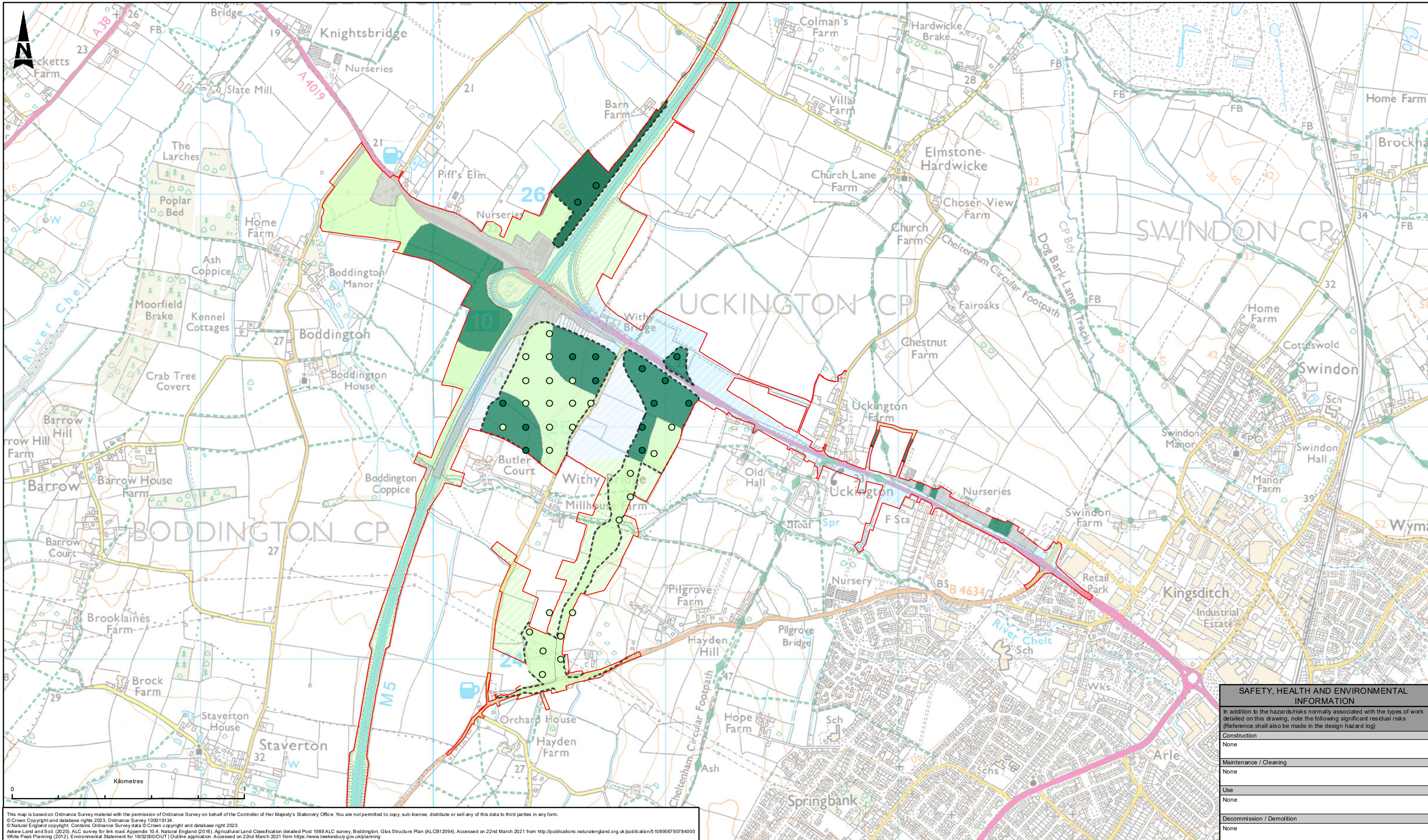
Description	Status	Revision	Drawn	Checked	Reviewed	Authorised	Issue Date
PUBLISHED							

PUBLISHED **A1**

ATKINS
 Member of the SNC-Lavalin Group
 5th Floor, Block 5
 Shire Hall
 Bearland
 Gloucester
 GL1 2TH
 Tel: 08000 514 514
 Copyright © Atkins Limited (2023) www.atkinsglobal.com

Gloucestershire COUNTY COUNCIL

Project Title				
M5 Junction 10 Improvements Scheme				
Drawing Title				
FIGURE 10-2 GROUND INVESTIGATION LOCATION PLAN				
Drawing Number				
Project	Original	Volume		
GCCM5J10 - ATK - EGT				
ZZ - GS - GI - 000003				
Location	Type	Rate	Number	Rev.
Original Size: A3	Scale: 1:5,000	Project Ref: 5214106	Sheet: 8 of 8	Rev: P01



This map is based on Ordnance Survey material with the permission of Ordnance Survey on behalf of the Controller of Her Majesty's Stationery Office. You are not permitted to copy, sub-licence, distribute or sell any of this data to third parties in any form.
 © Crown Copyright and database rights 2023. Ordnance Survey 100019134.
 © Natural England copyright. Contains Ordnance Survey data © Crown copyright and database right 2023.
 Askew Land and Soil (2020). ALC survey for link road Appendix 10.4. Natural England (2016). Agricultural Land Classification detailed Post 1988 ALC survey, Boddington, Gbs Structure Plan (ALCB12094). Accessed on 22nd March 2021 from <http://publications.naturalengland.org.uk/publication/5108956790784000>
 White Peak Planning (2012). Environmental Statement for 16/02/000/OUT | Outline application. Accessed on 22nd March 2021 from <https://www.tewkesbury.gov.uk/planning>

SAFETY, HEALTH AND ENVIRONMENTAL INFORMATION	
In addition to the hazards/risks normally associated with the types of work detailed on this drawing, note the following significant residual risks (Reference shall also be made in the design hazard log)	
Construction	None
Maintenance / Cleaning	None
Use	None
Decommission / Demolition	None

LEGEND

- ORDER LIMITS
- ALC SURVEY UNDERTAKEN AS PART OF THE SCHEME INCLUDED IN APPENDIX 10.4
- ALC SURVEY UNDERTAKEN DURING ELM LAKE DEVELOPMENT FROM WHITE PEAK PLANNING LTD ENVIRONMENTAL STATEMENT

* WHERE NEITHER DOTTED OR DASHED LINES ARE SHOWN, LAND CLASSIFICATION GRADES ARE BASED ON THE NATURAL ENGLAND PROVISIONAL AND POST 1988 AGRICULTURAL LAND CLASSIFICATION

SITE SURVEY HAND AUGER SAMPLE POINTS	
●	GRADE 3A
○	GRADE 3B

AGRICULTURAL LAND CLASSIFICATION	
■	GRADE 1 - EXCELLENT QUALITY
■	GRADE 2 - VERY GOOD QUALITY
■	GRADE 3A - GOOD QUALITY
■	GRADE 3B - MODERATE QUALITY
■	GRADE 4 - POOR QUALITY
■	GRADE 5 - VERY POOR QUALITY
■	NOT SURVEYED
■	OTHER

AGRICULTURAL LAND CLASSIFICATION GRADES 1, 2 AND 3A ARE BEST AND MOST VERSATILE

Description	Status	Revision	Drawn	Checked	Reviewed	Authorised	Issue Date
PUBLISHED							

ATKINS
 Member of the SNC-Lavalin Group
 5th Floor, Block 5
 Shire Hall
 Bearland
 Gloucester
 GL1 2TH
 Tel: 08000 514 514
 www.atkinsglobal.com

gloucestershire
 COUNTY COUNCIL

Project Title		M5 Junction 10 Improvements Scheme	
Drawing Title		FIGURE 10-3 AGRICULTURAL LAND CLASSIFICATION	
Drawing Number		GCCM5J10 - ATK - EGT ZZ - GS - GI - 000001	
Original Size: A3	Scale: 1:15,000	Project Ref: 5214106	Sheet: 1 of 1 Rev: P02

ATKINS

Member of the SNC-Lavalin Group

5th Floor, Block 5
Shire Hall
Bearland
Gloucester
GL1 2TH

Tel: +44 (0) 8000 514 514