

# M5 Junction 10 Improvements Scheme

## Transport Assessment Appendix M - Construction Phase Figures TR010063 - APP 7.5

Regulation 5 (2) (q)

Planning Act 2008

Infrastructure Planning (Applications: Prescribed Forms and Procedure) Regulations 2009

Volume 7

December 2023



# Infrastructure Planning Planning Act 2008

## The Infrastructure Planning (Applications: Prescribed Forms and Procedure) Regulations 2009

### M5 Junction 10 Improvements Scheme Development Consent Order 202[x]

---

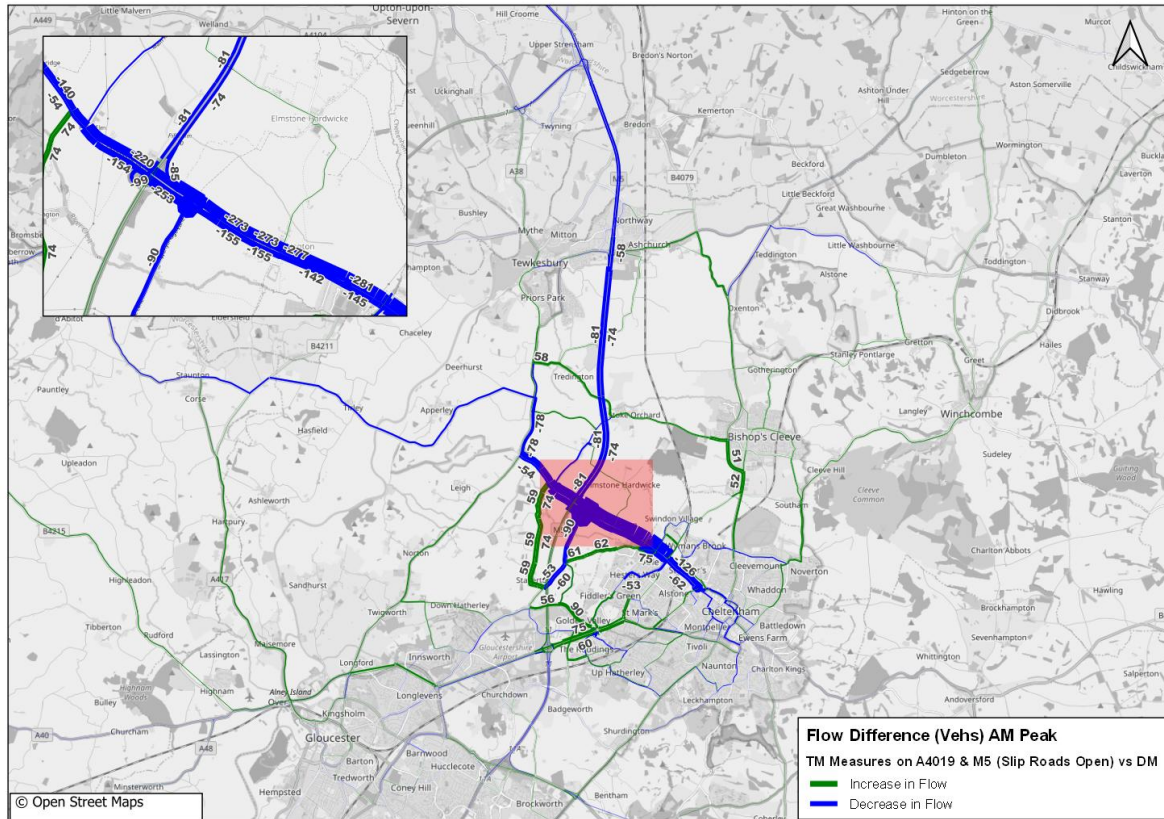
#### 7.5 Transport Assessment Appendix M – Construction Phase Figures

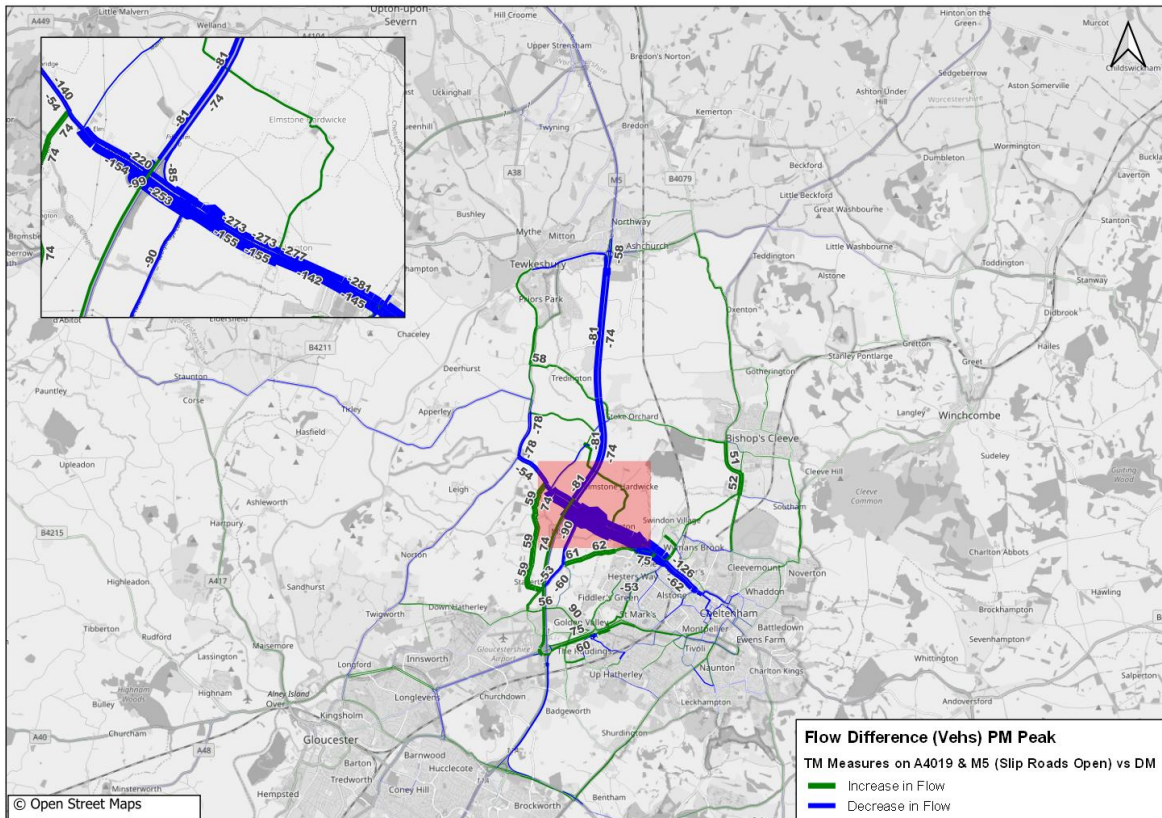
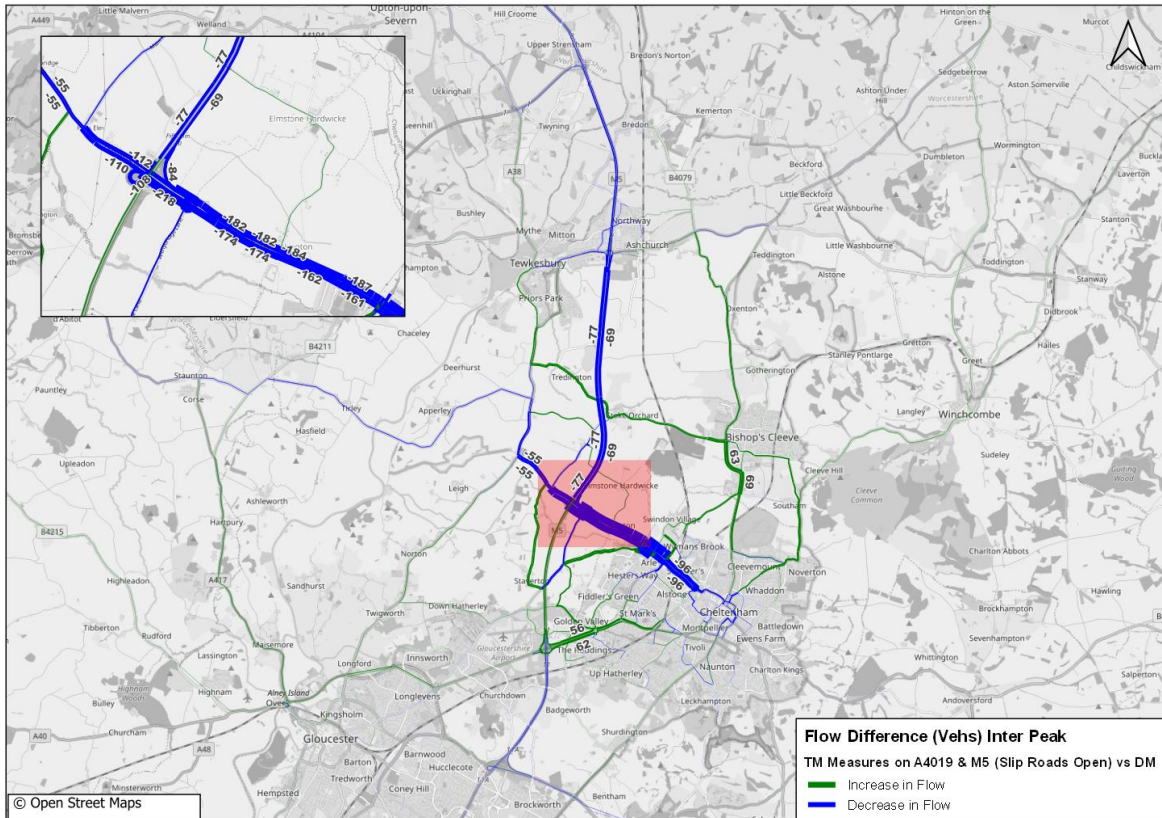
---

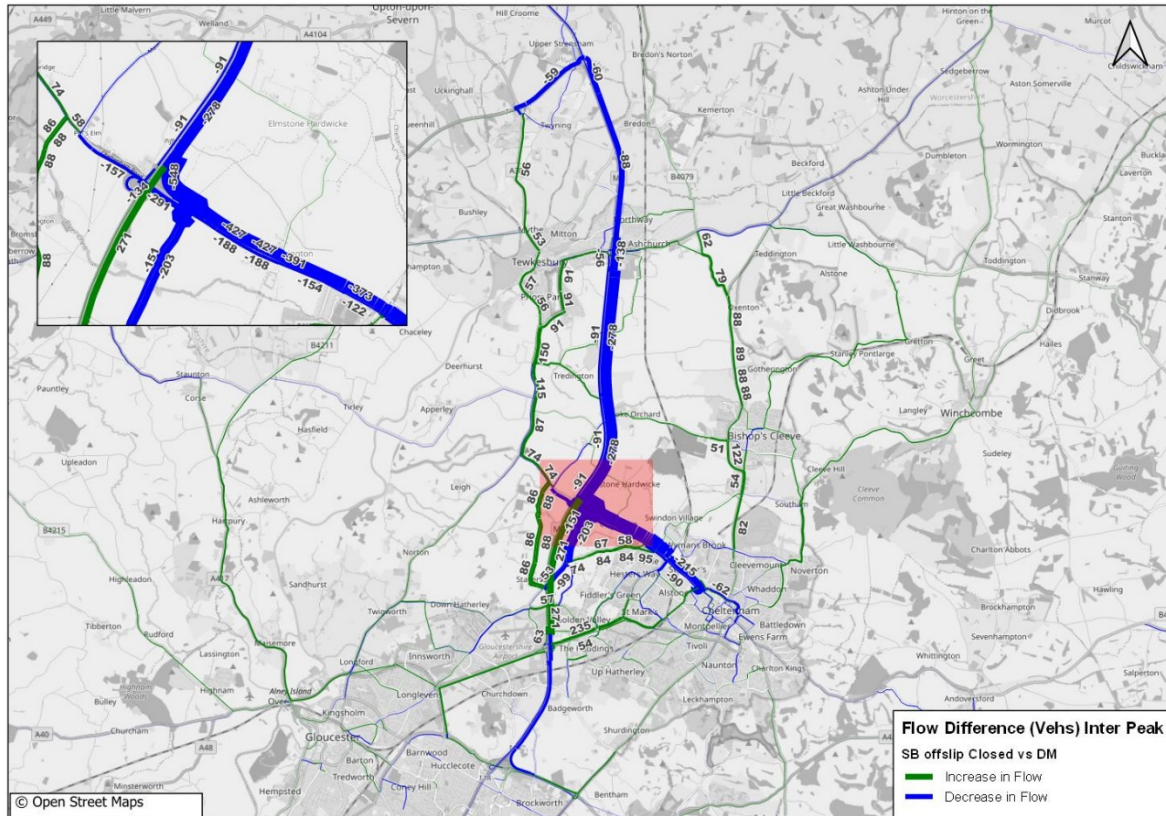
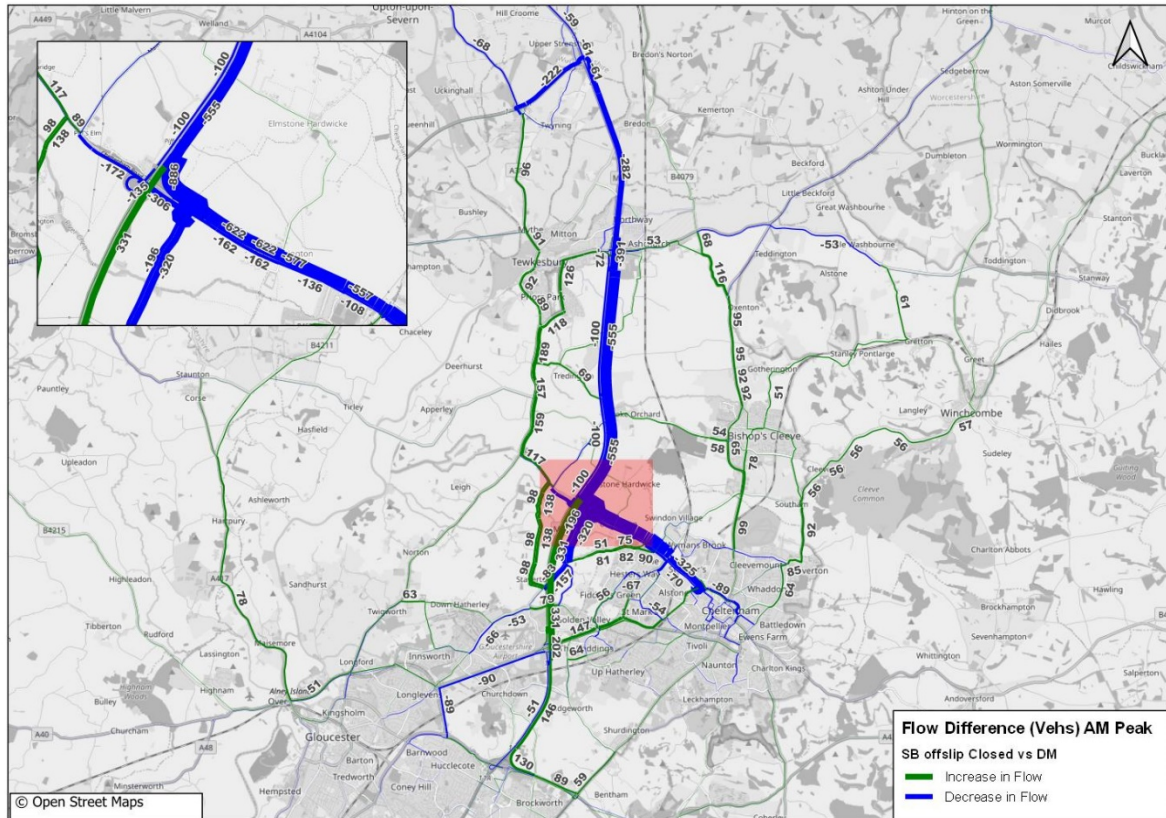
<b>Regulation Number:</b>	Regulation 5(2)(q)
<b>Planning Inspectorate Scheme Reference</b>	TR010063
<b>Application Document Reference</b>	TR010063 – APP 7.5
<b>Author:</b>	M5 Junction 10 Improvements Scheme Project Team

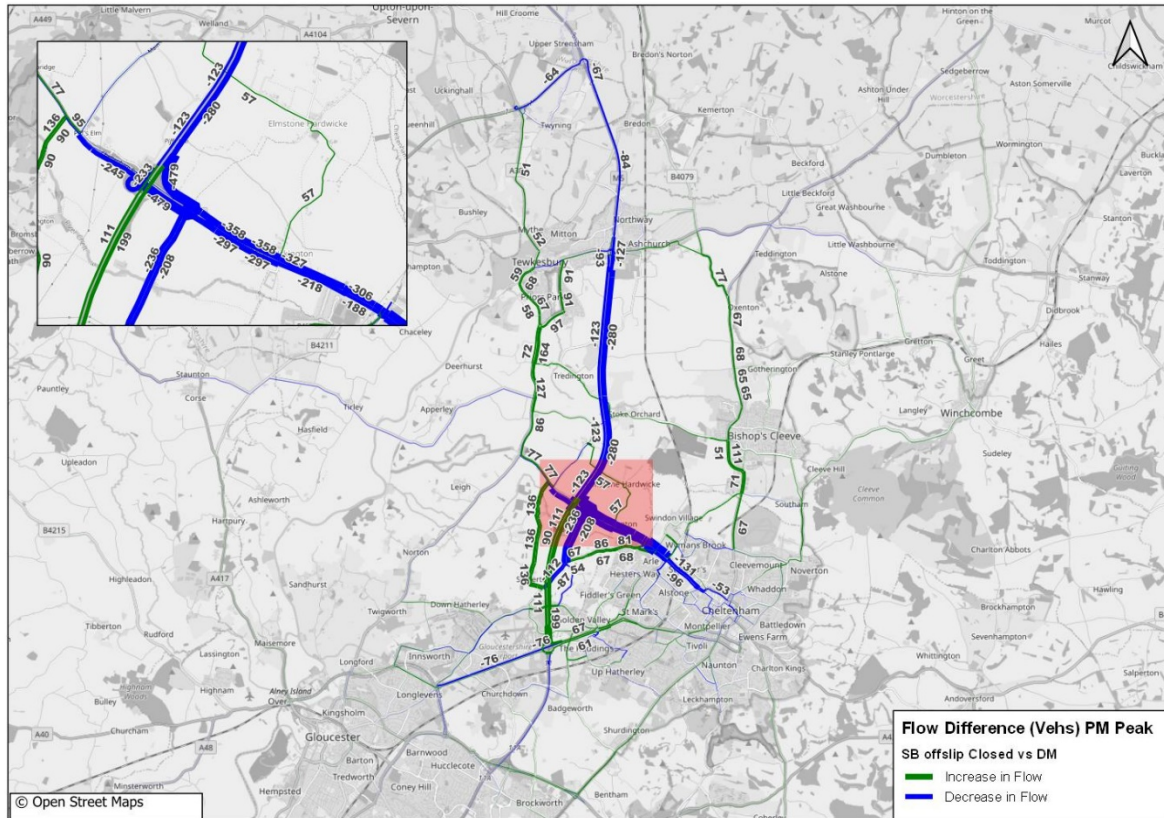
<b>Version</b>	<b>Date</b>	<b>Status of Version</b>
Rev 0	December 2023	DCO Application

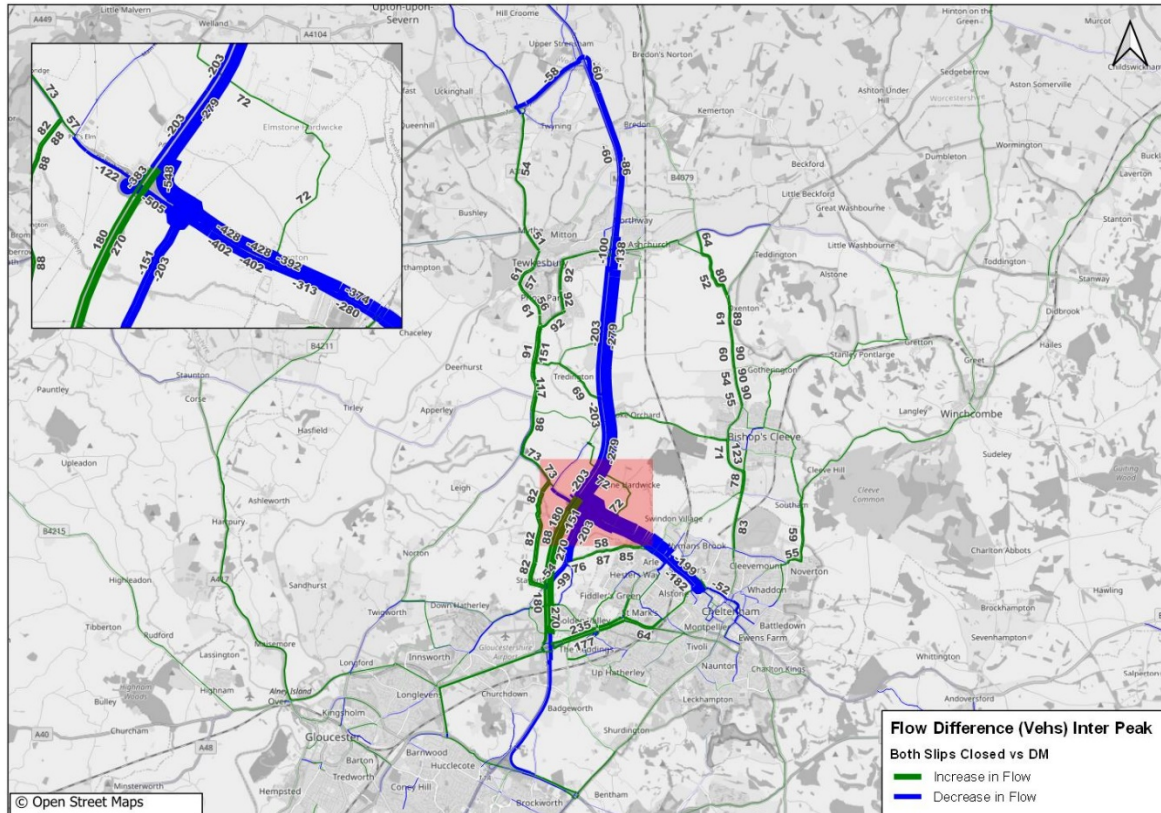
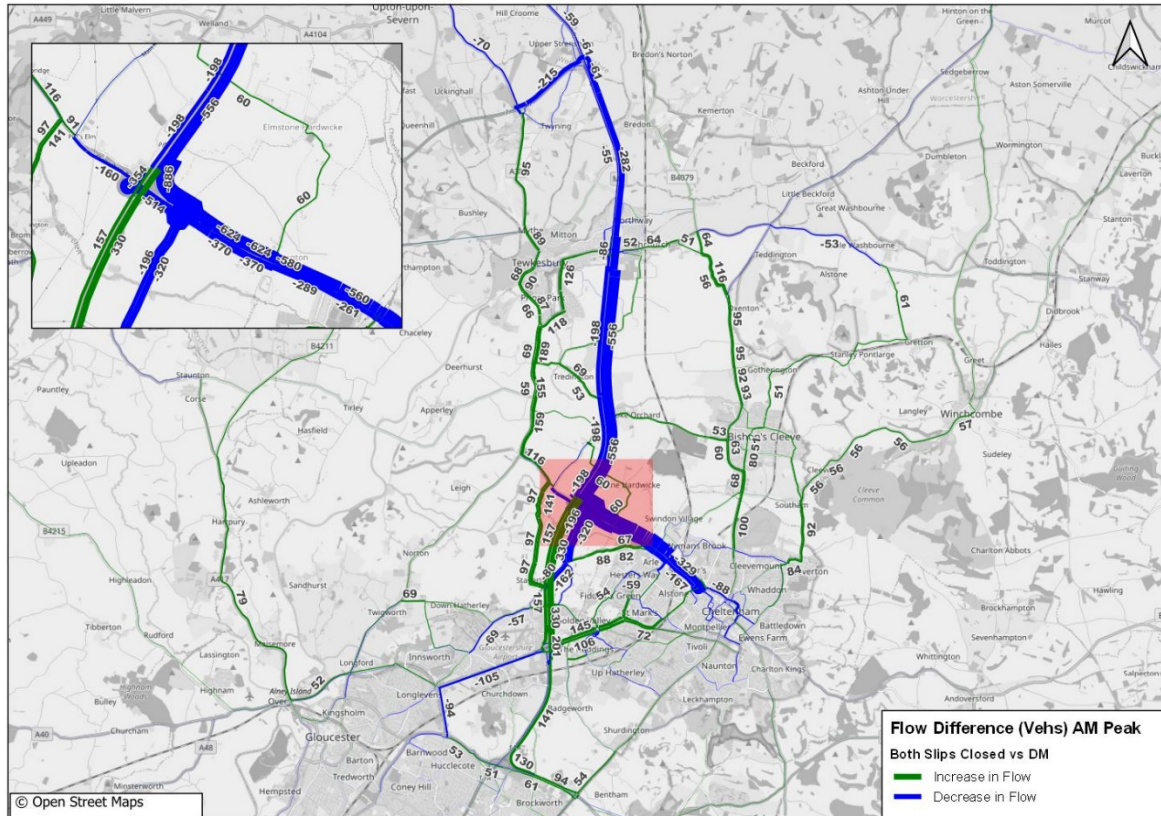
## M.1 Construction Phase Flow Difference Plots



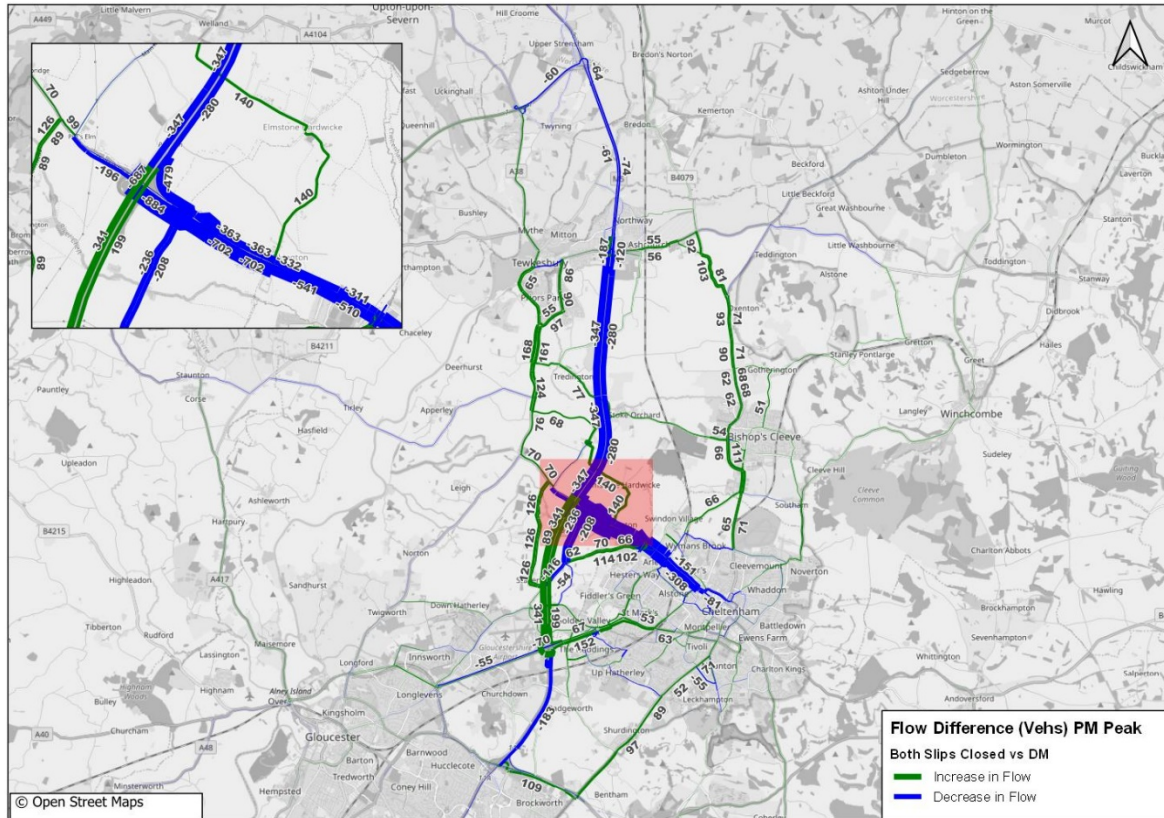


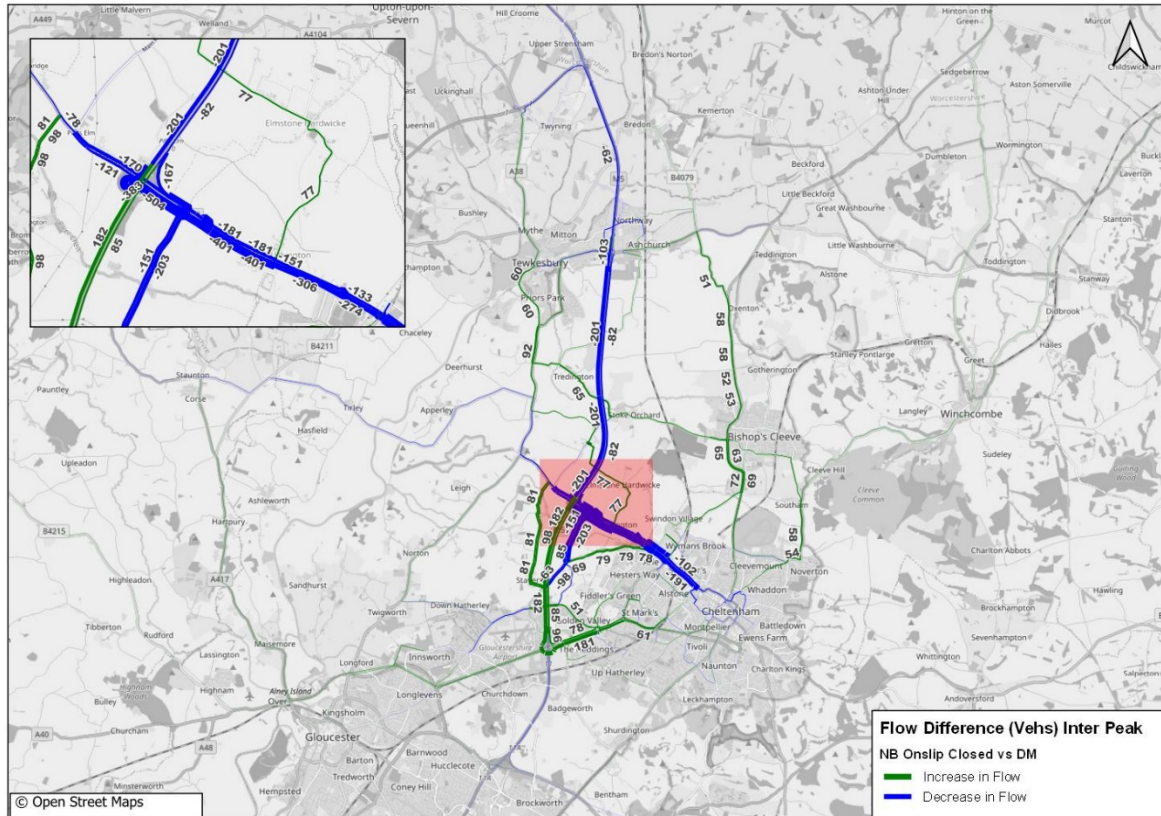
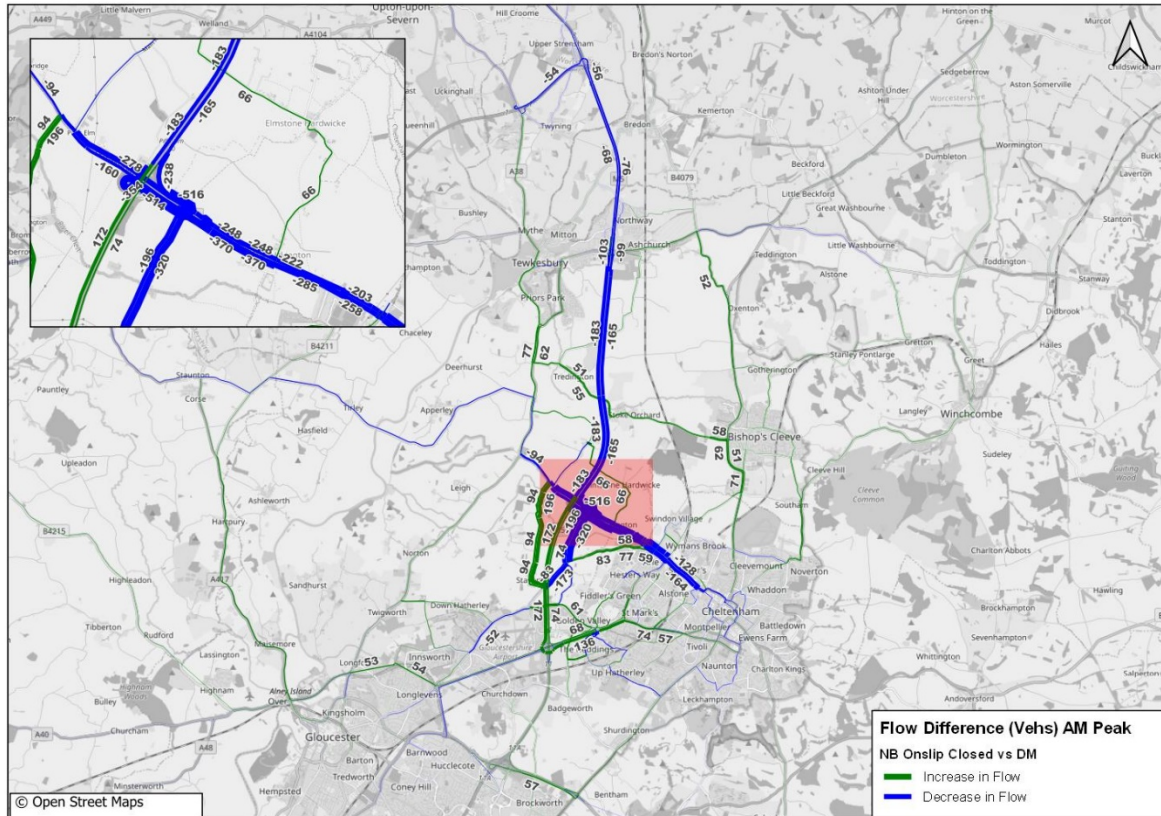


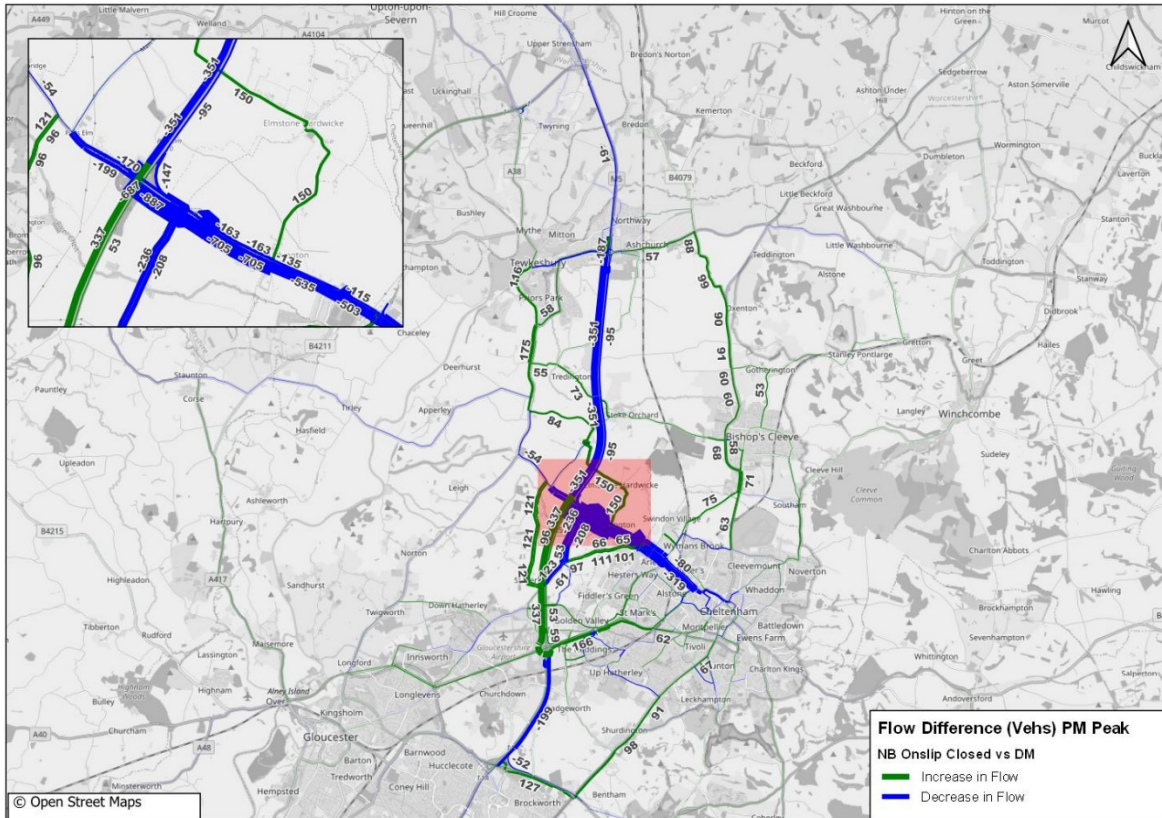




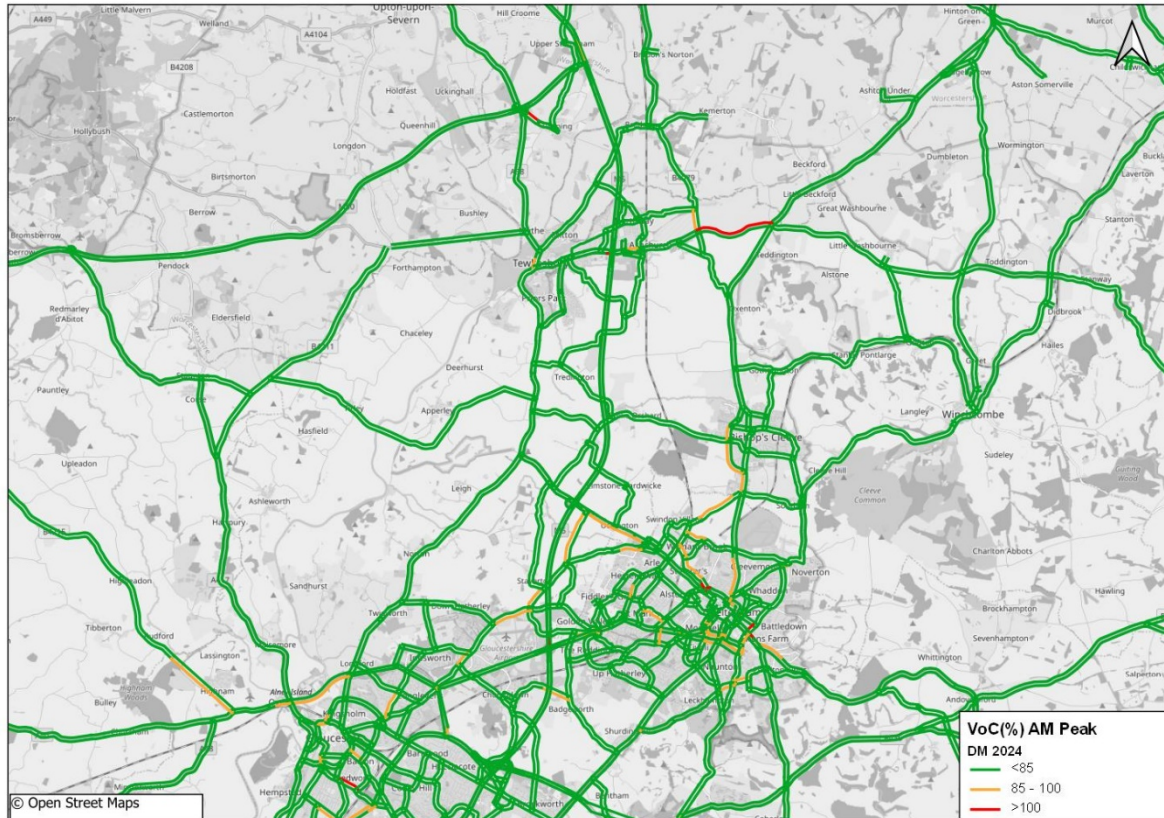


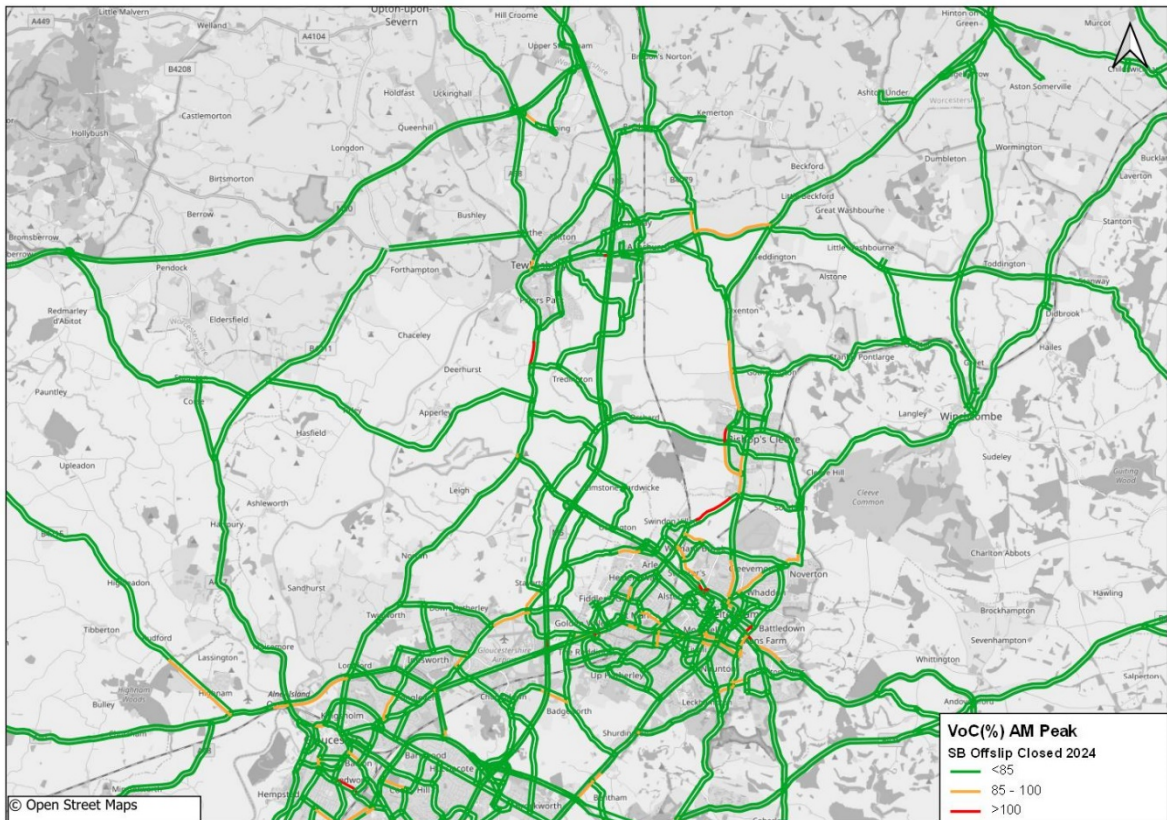
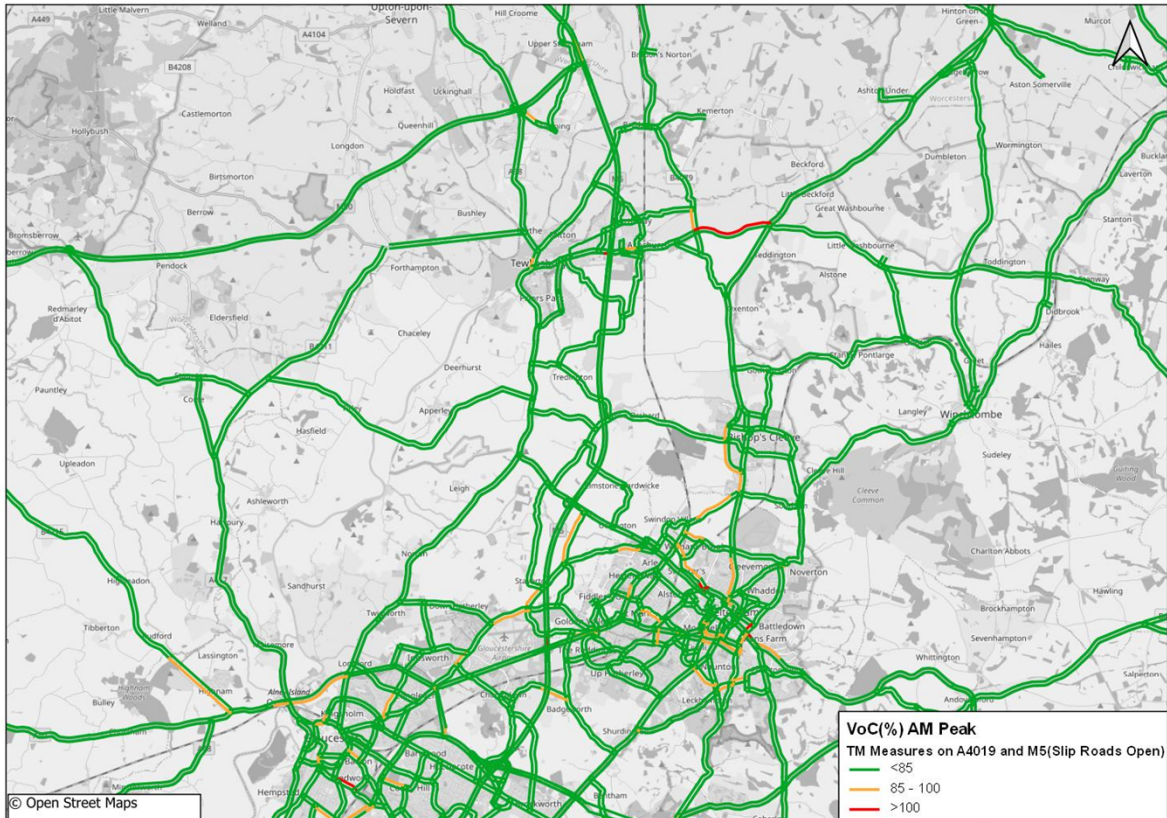


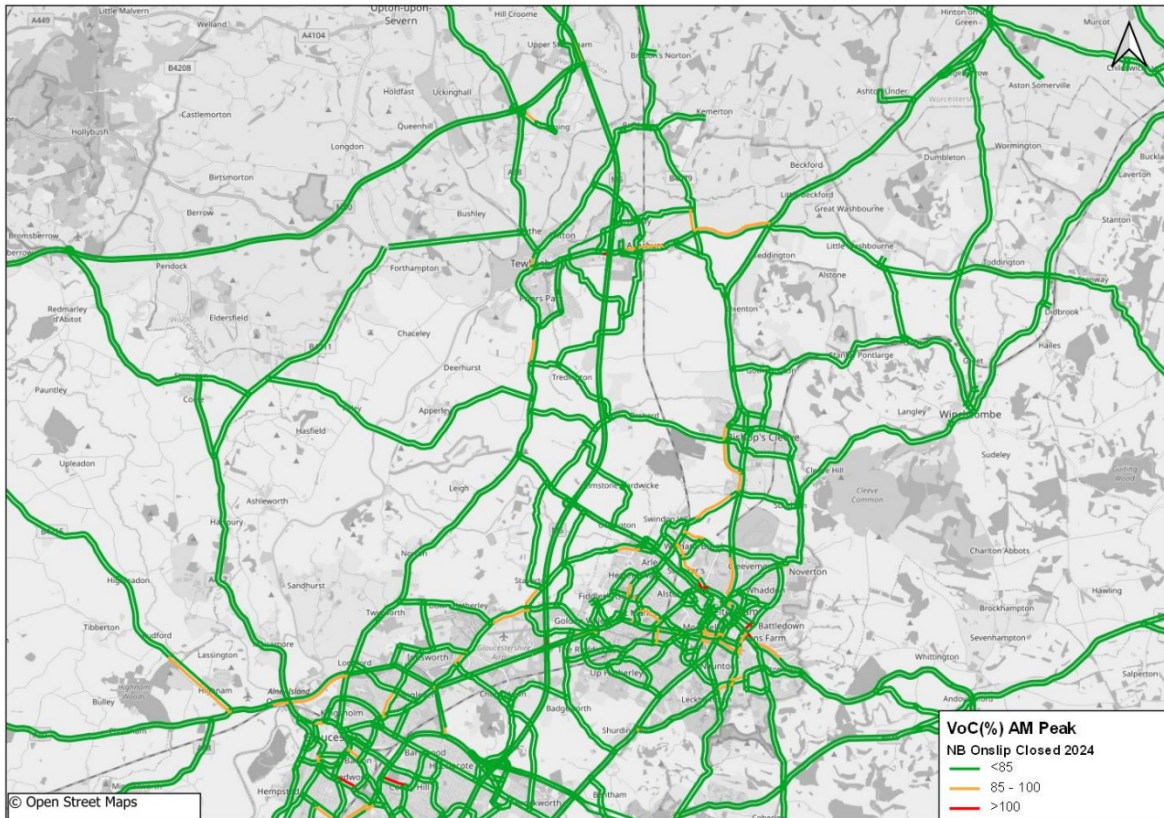
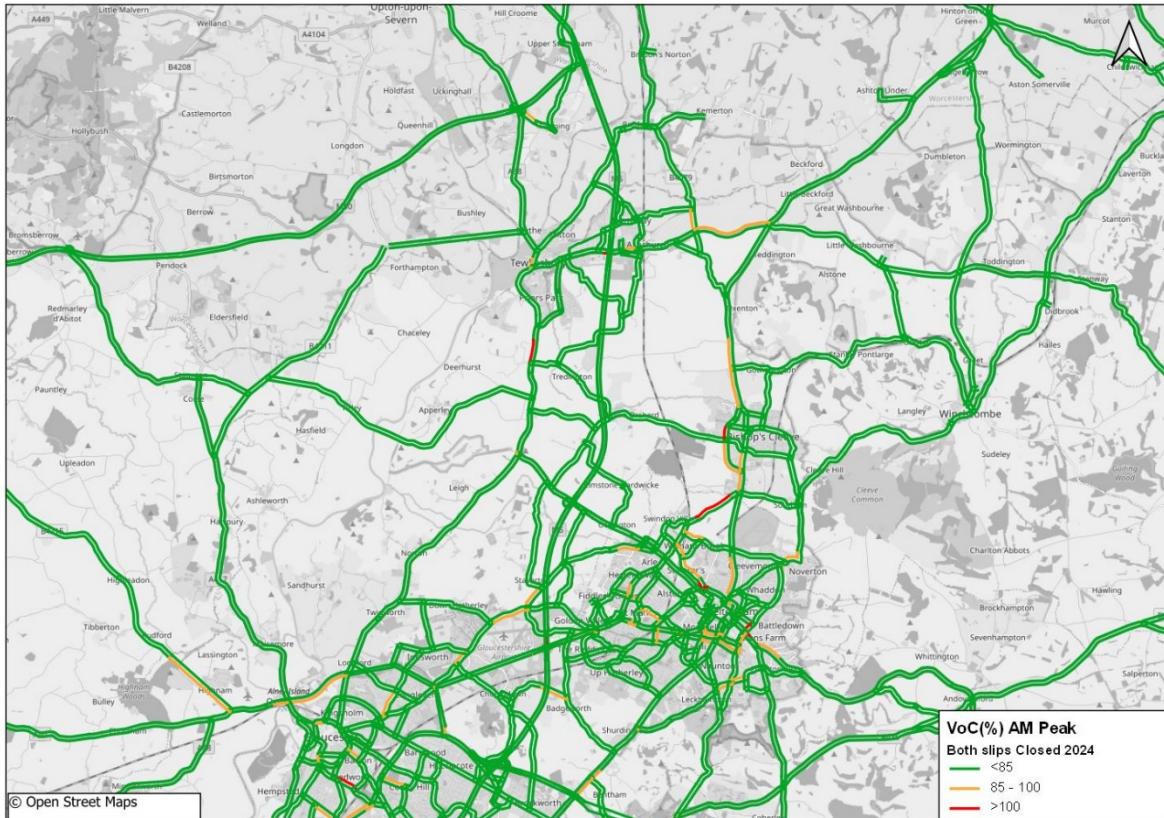




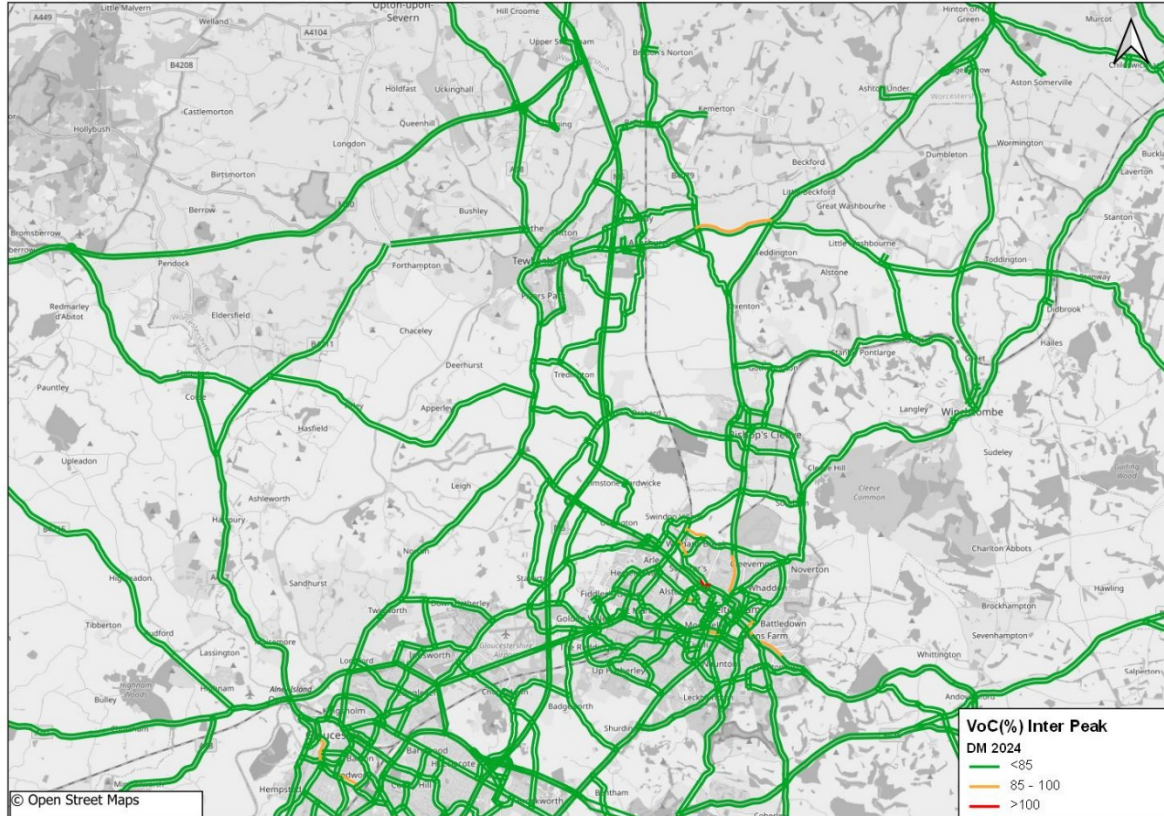
## M.2 Construction Phase V/C Plots AM Peak

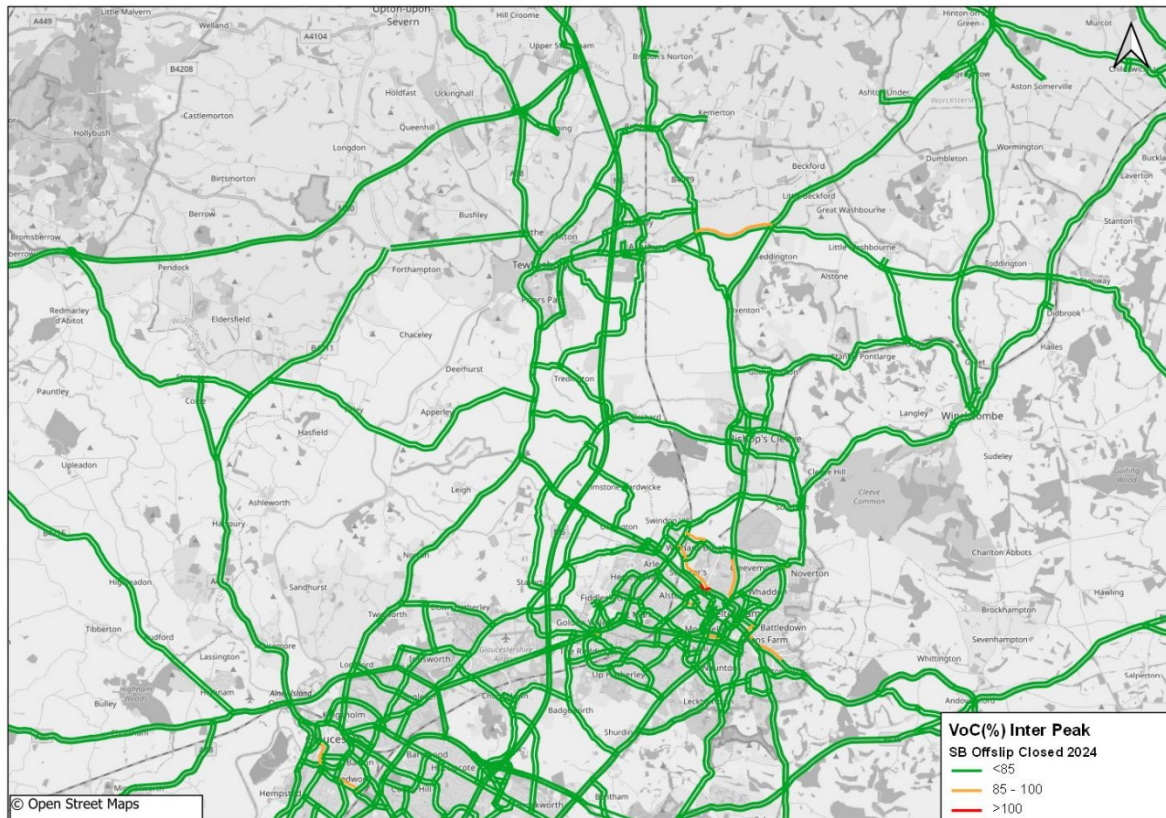




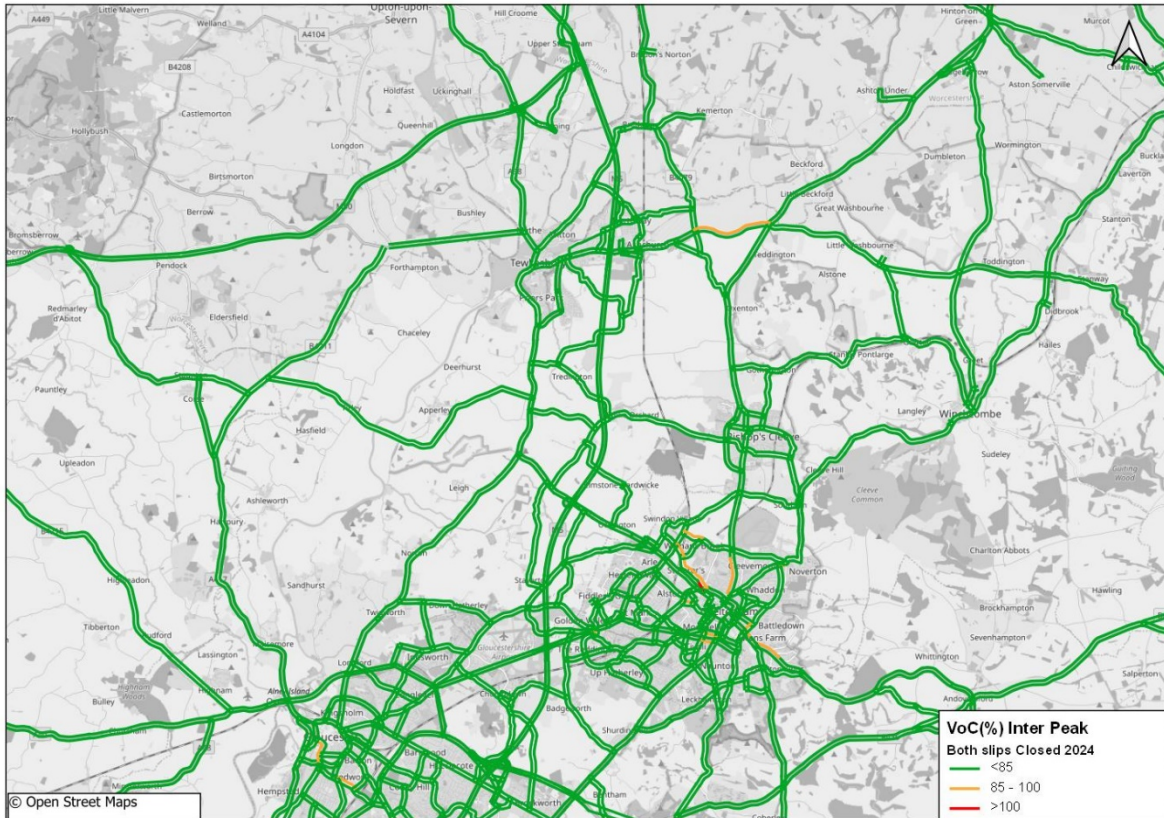


## Interpeak

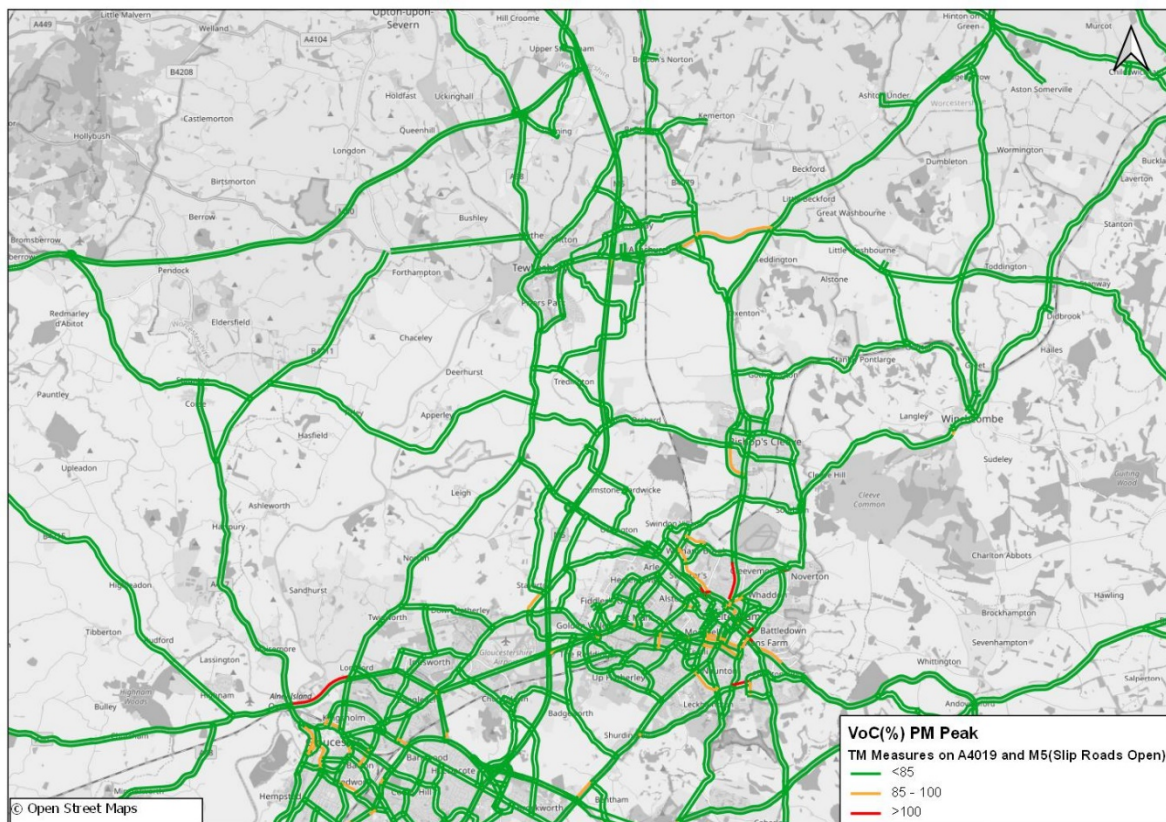
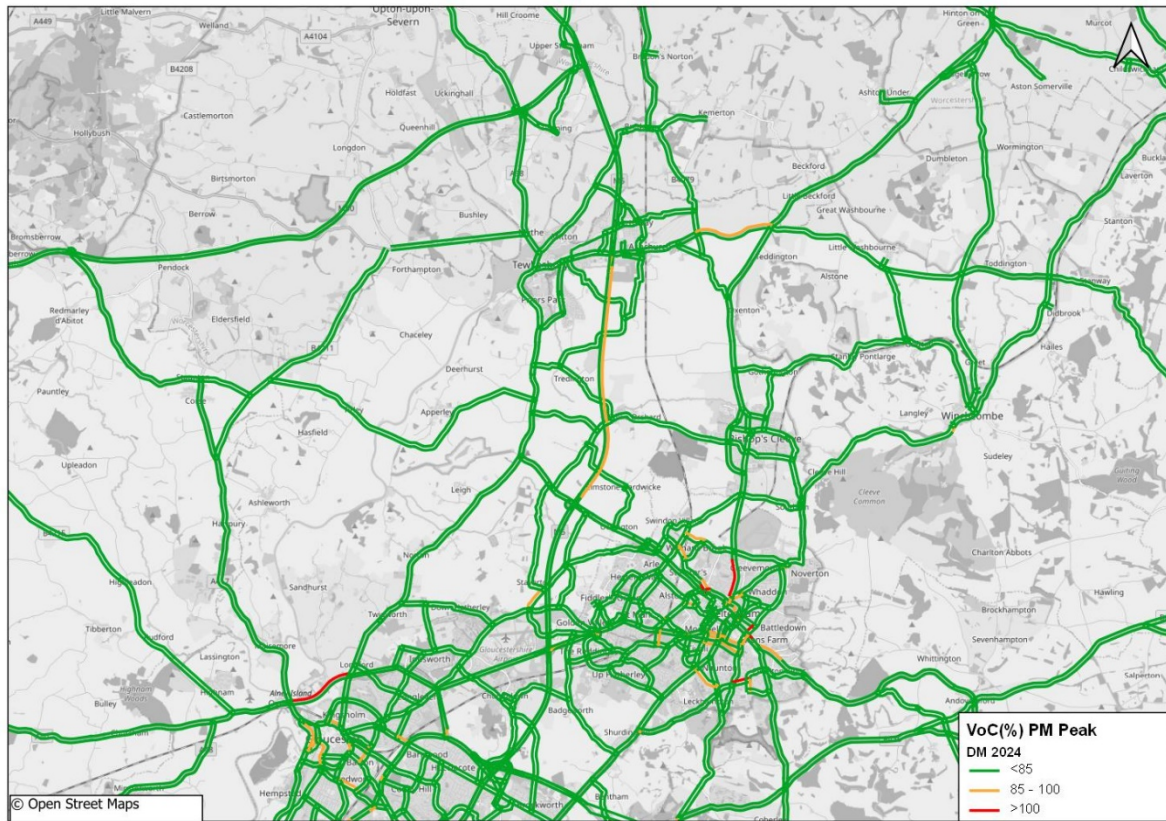


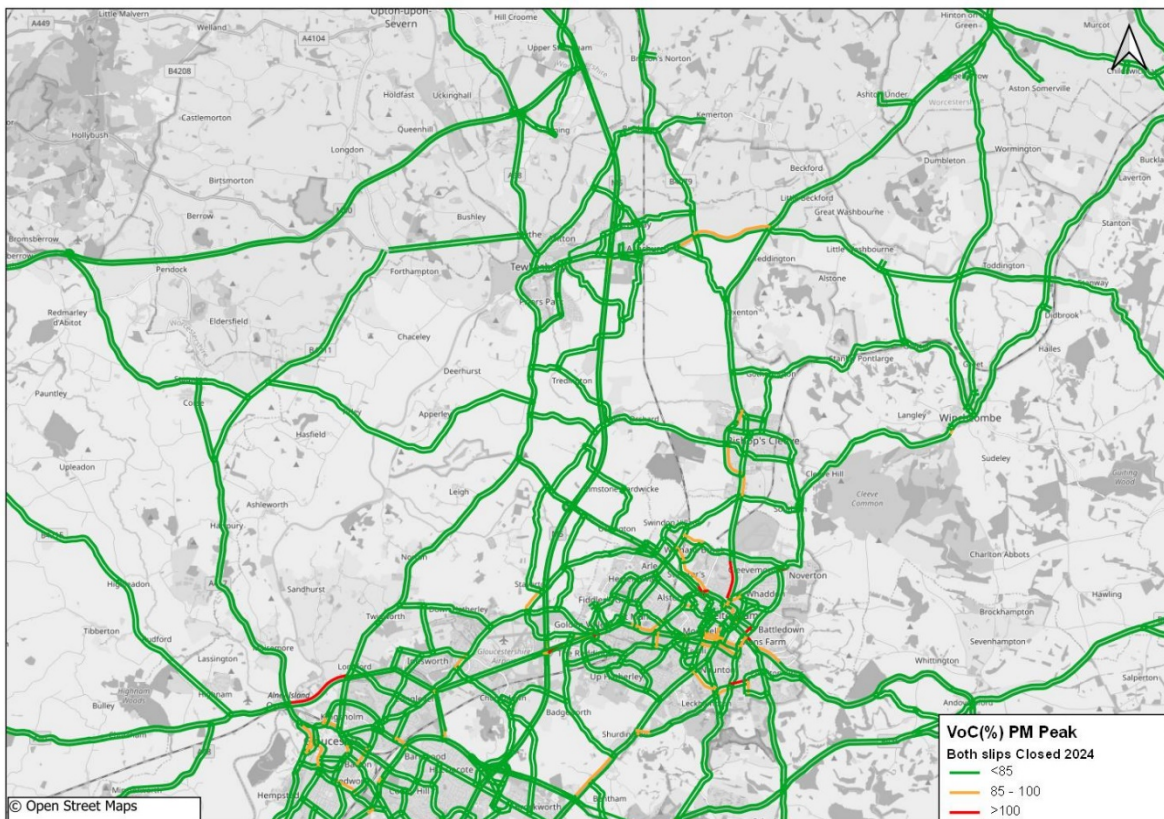
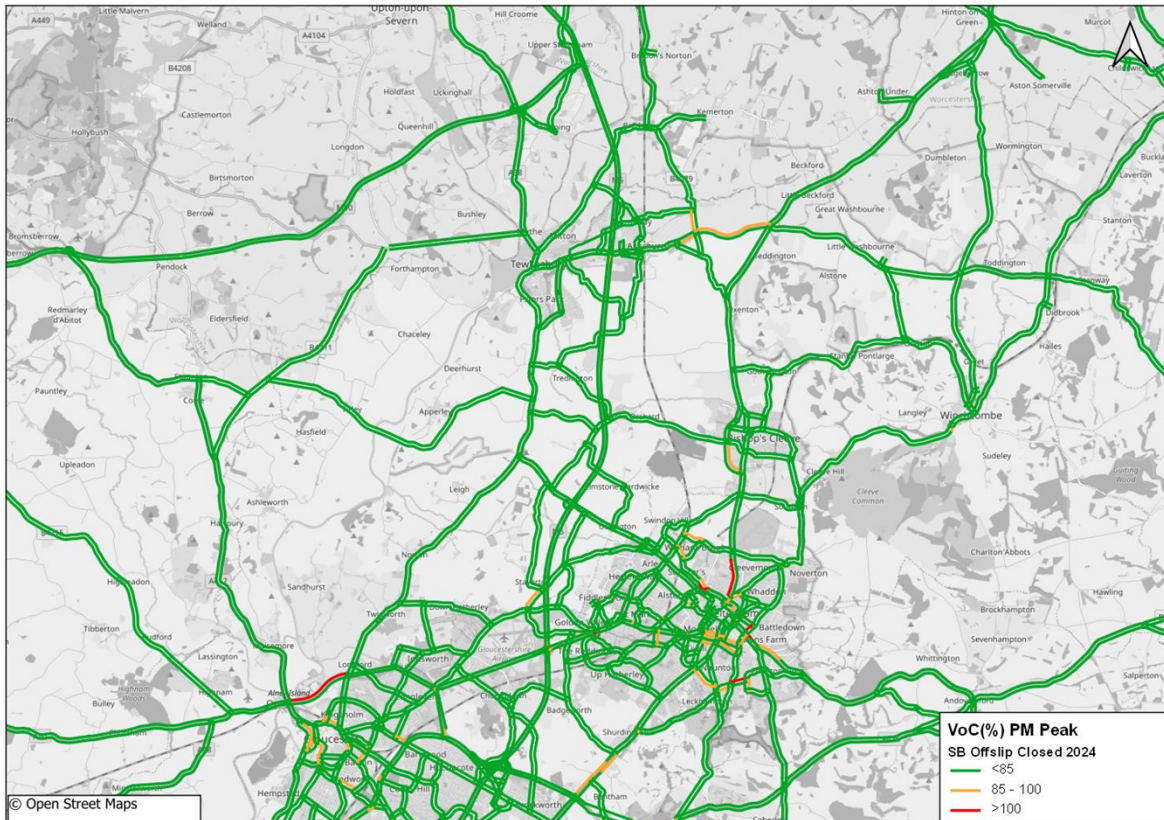


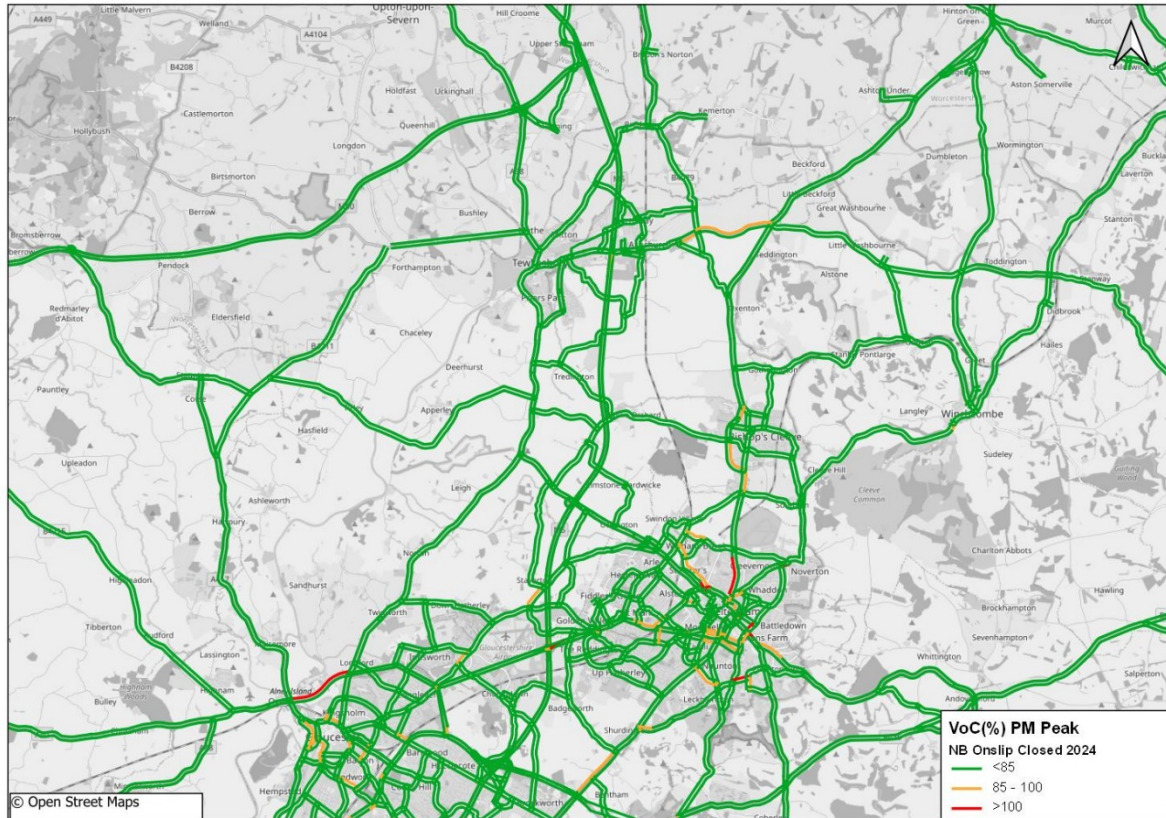




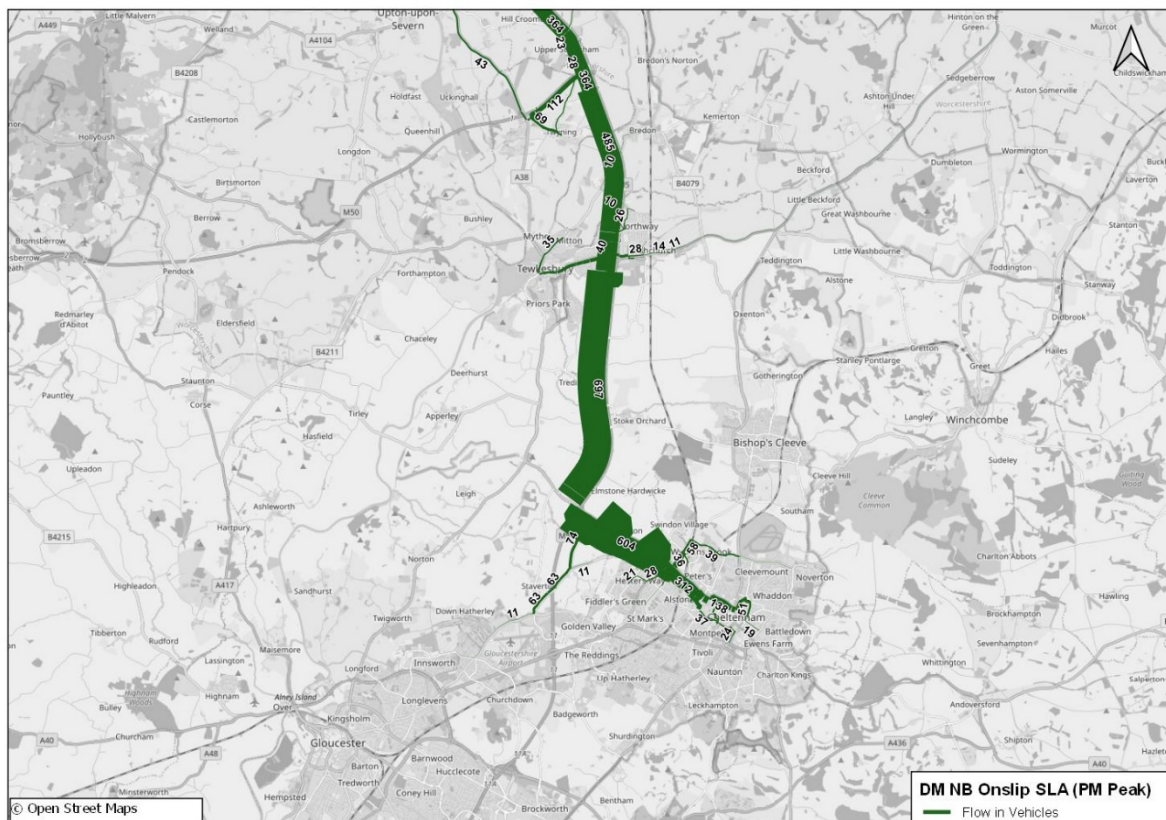
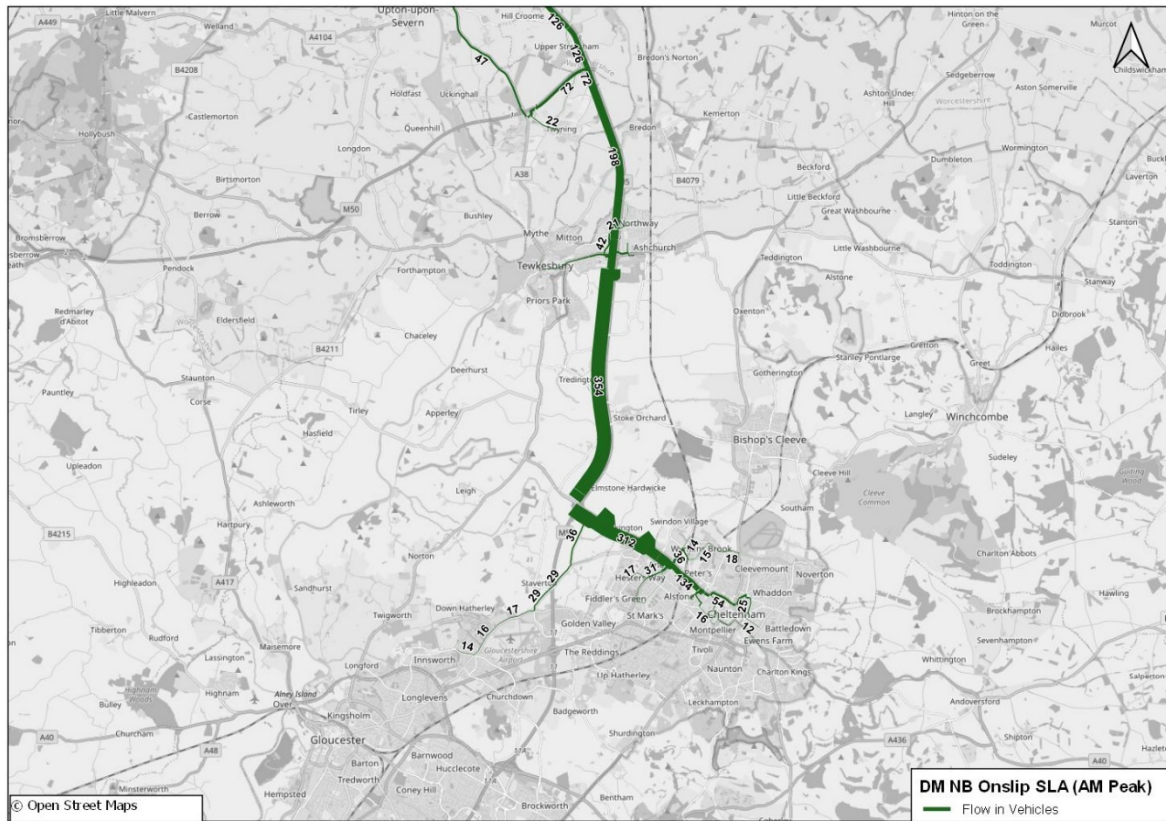
## PM Peak

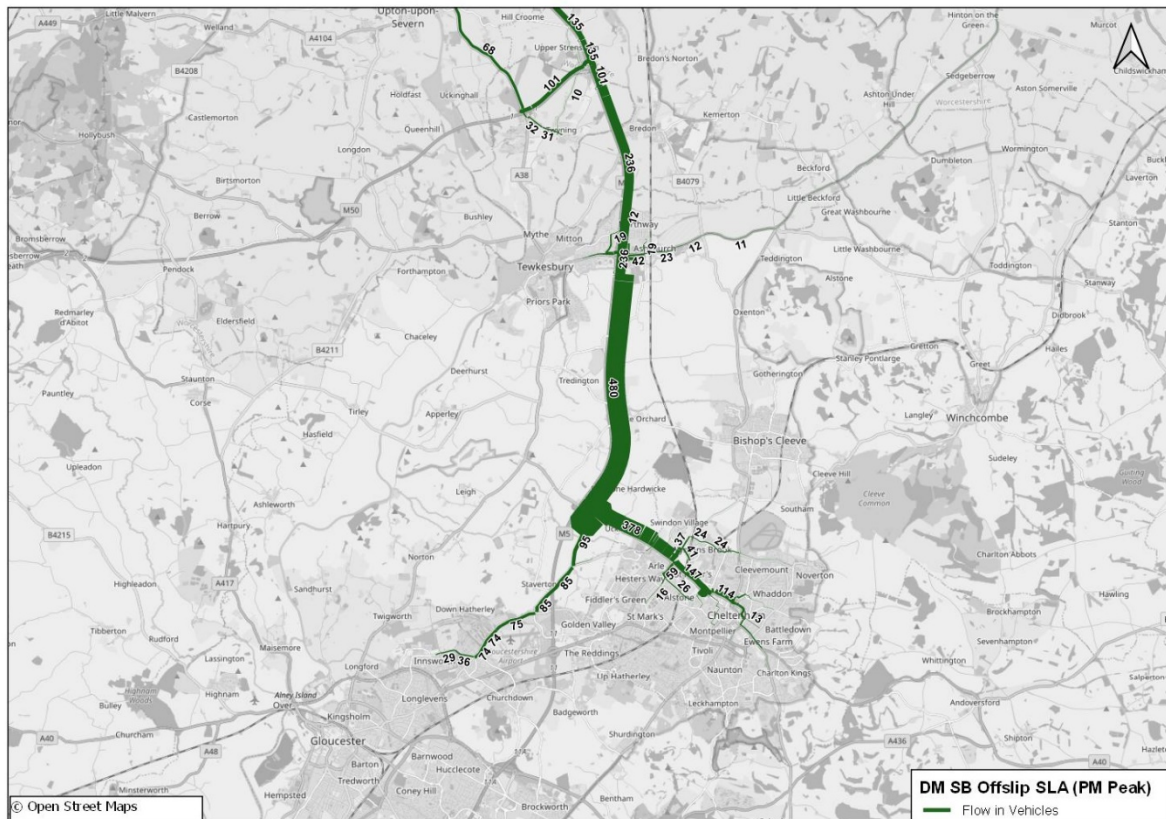
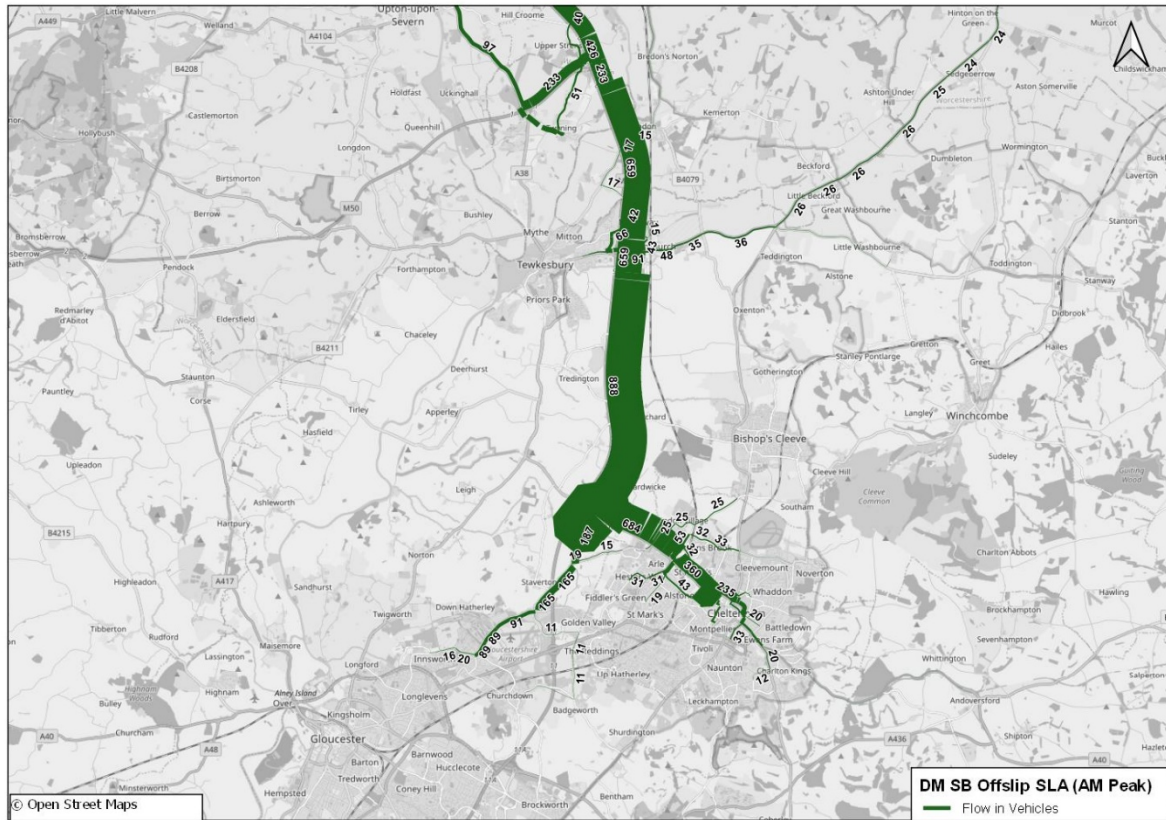


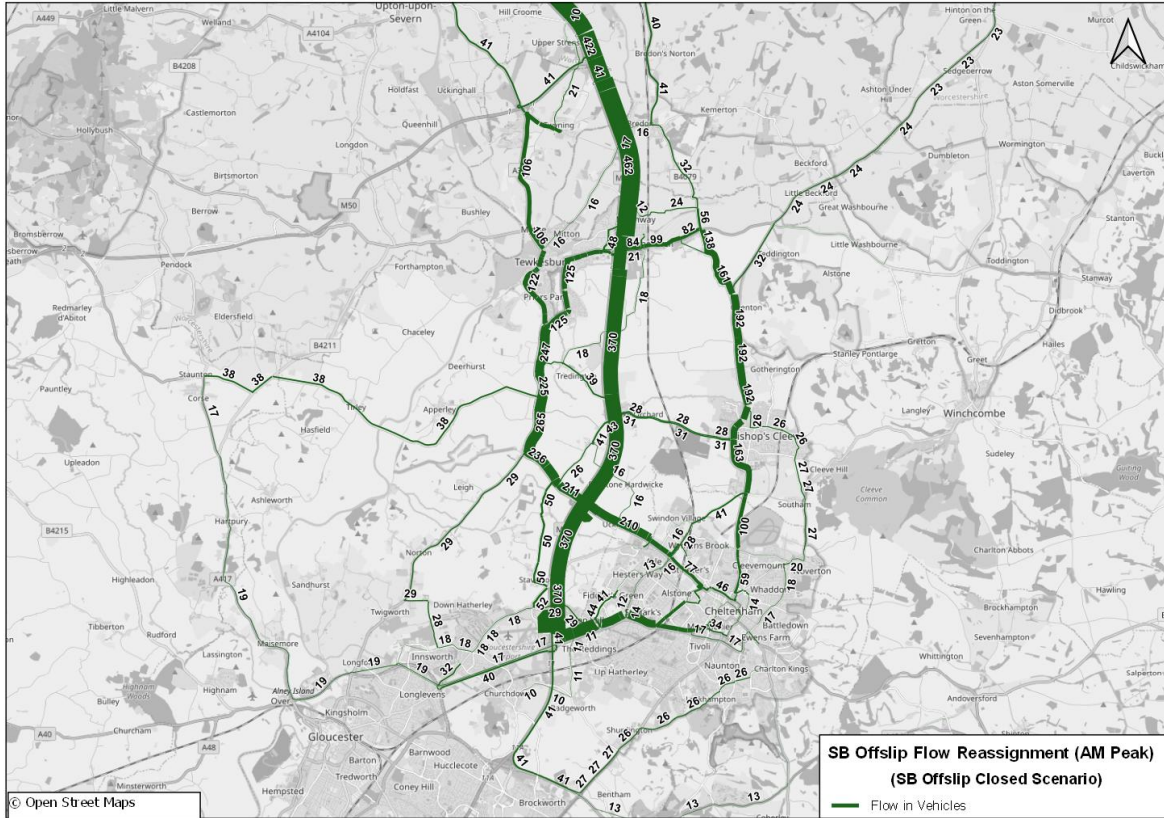


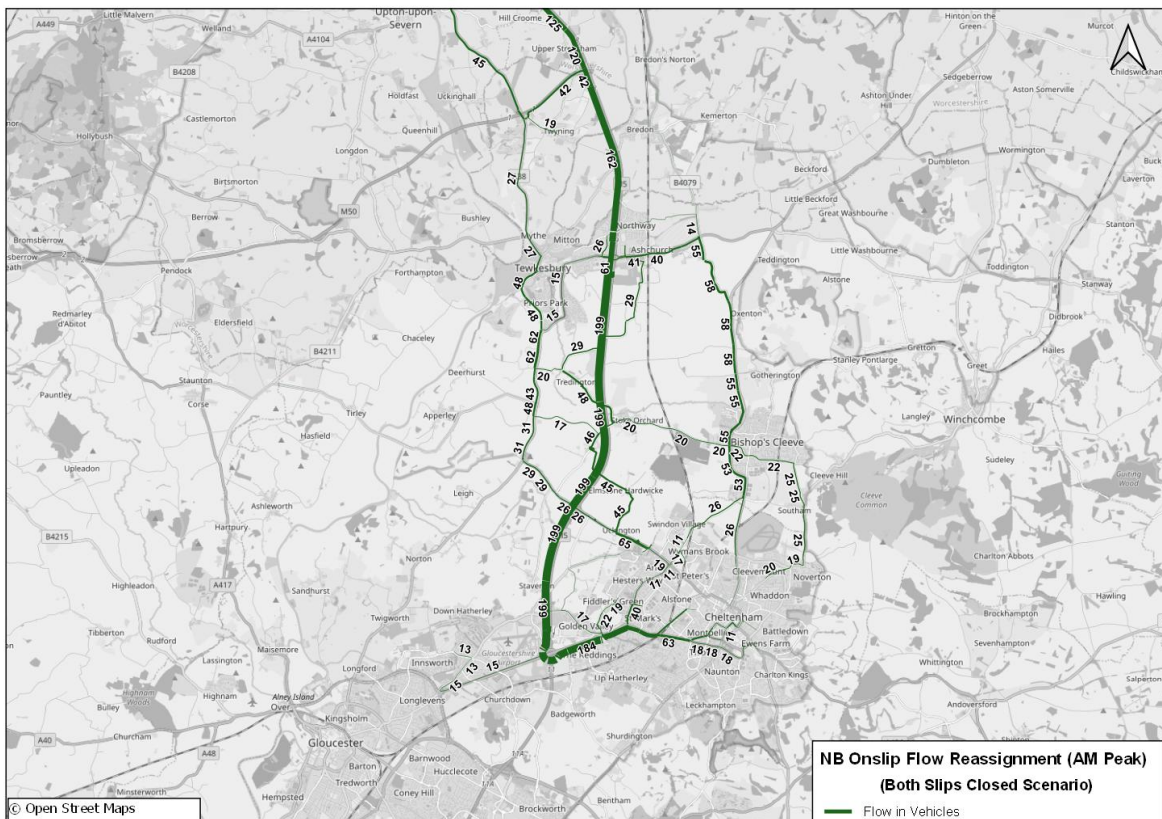
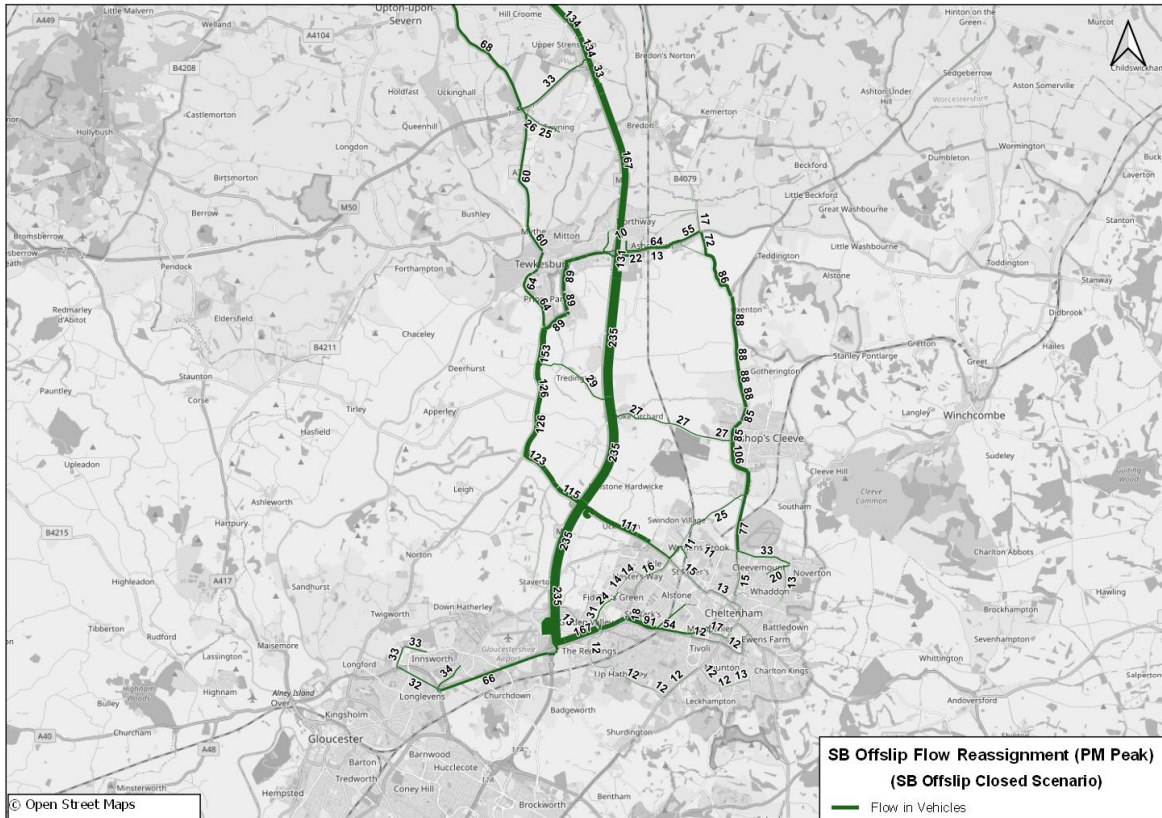


## M.3 Select Link Analysis 2024 DM

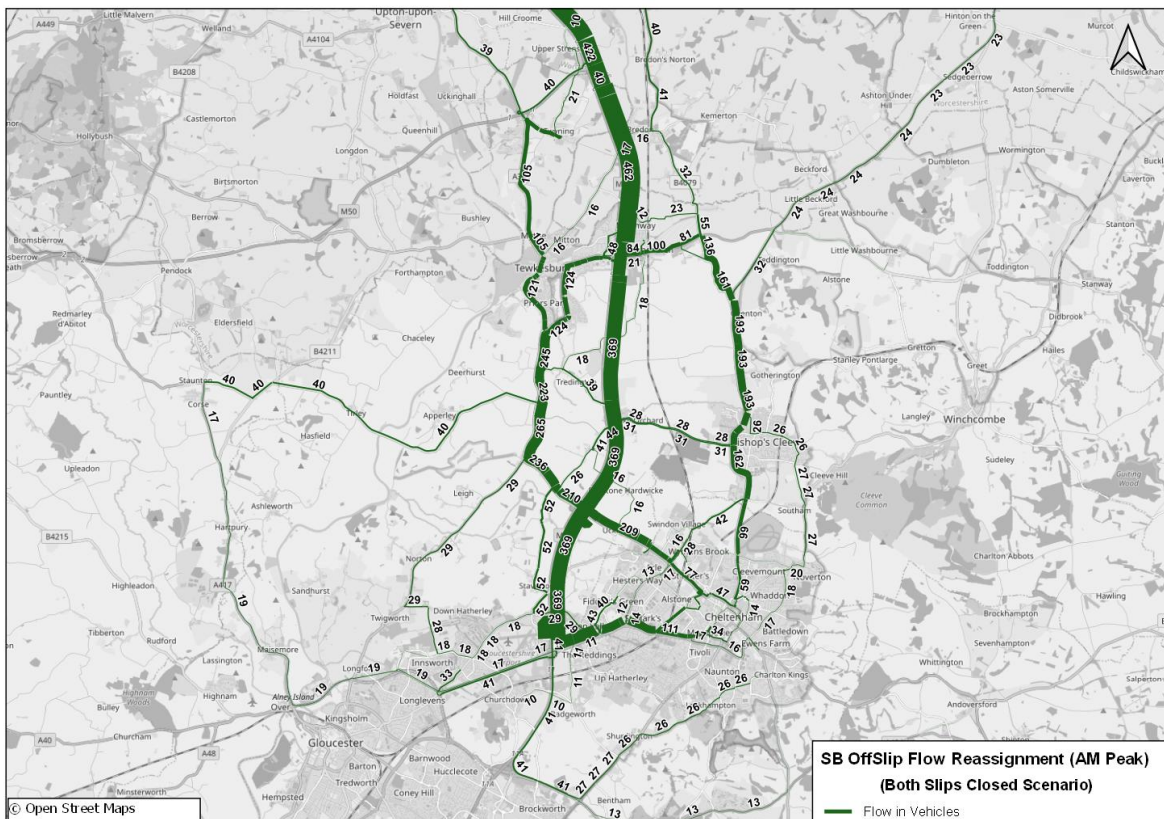
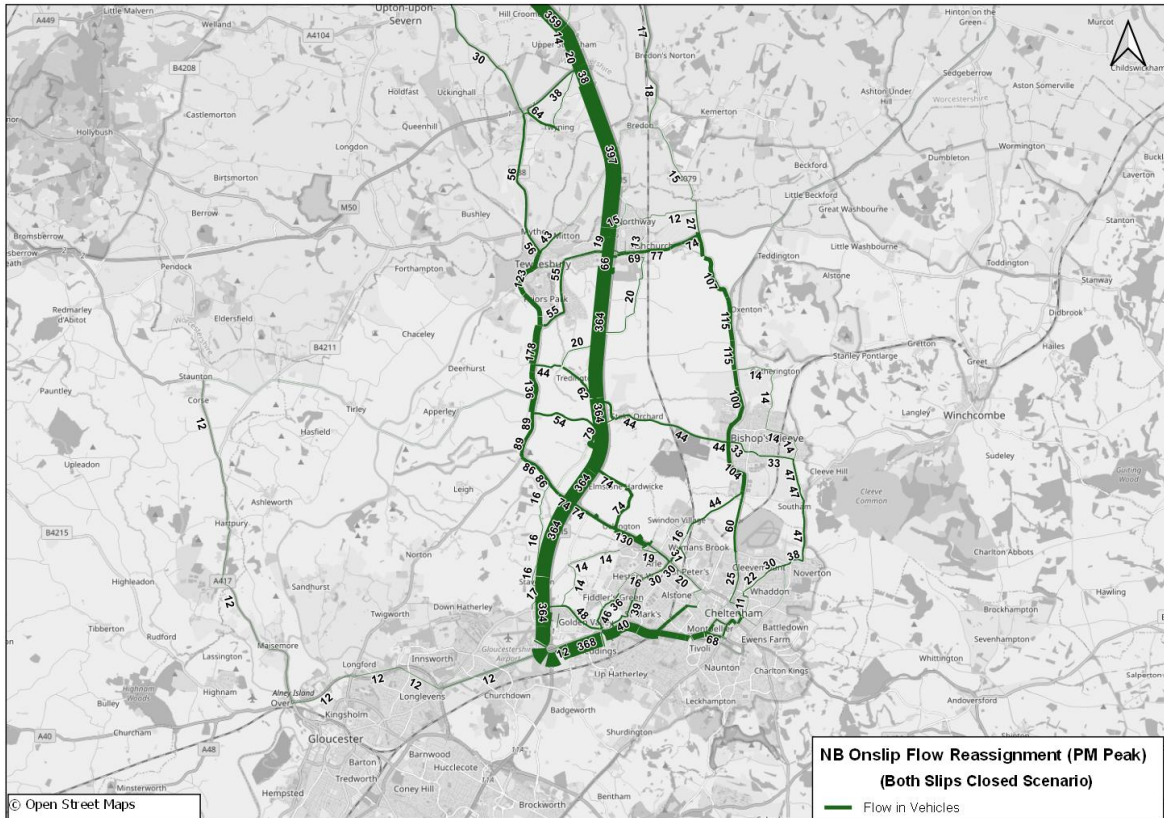


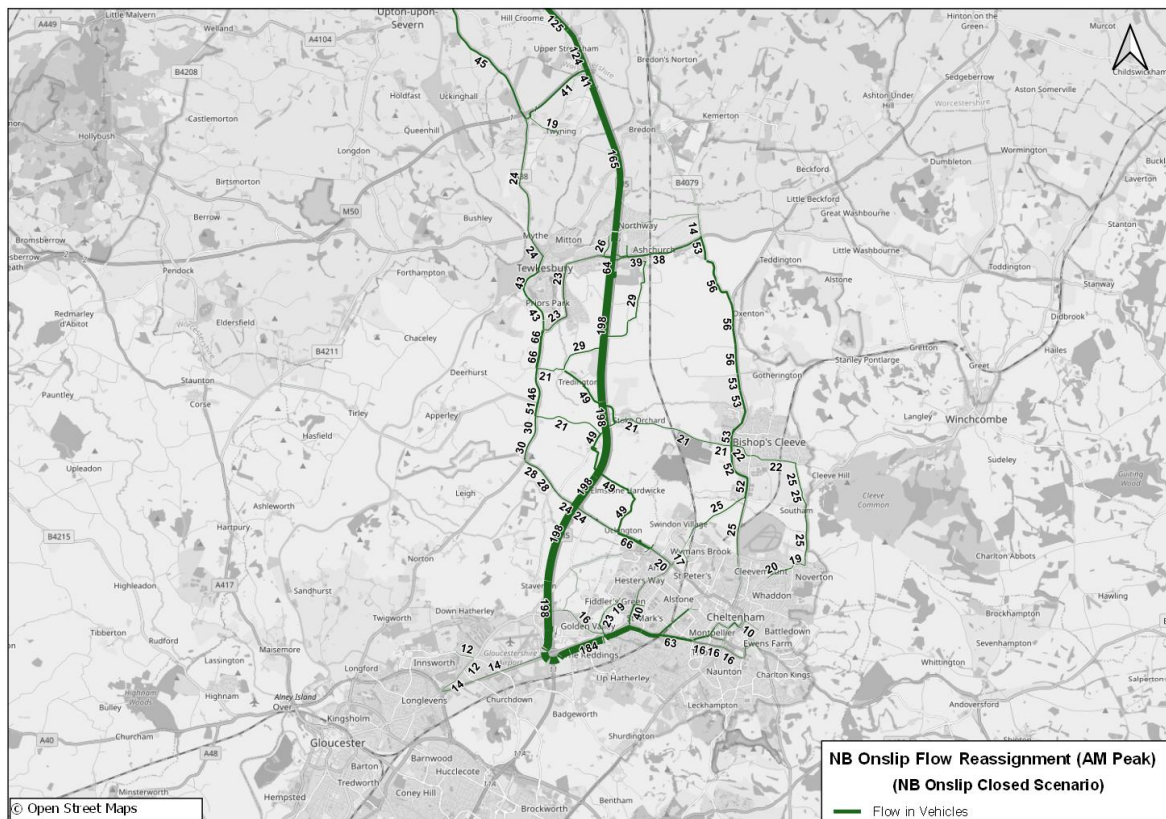
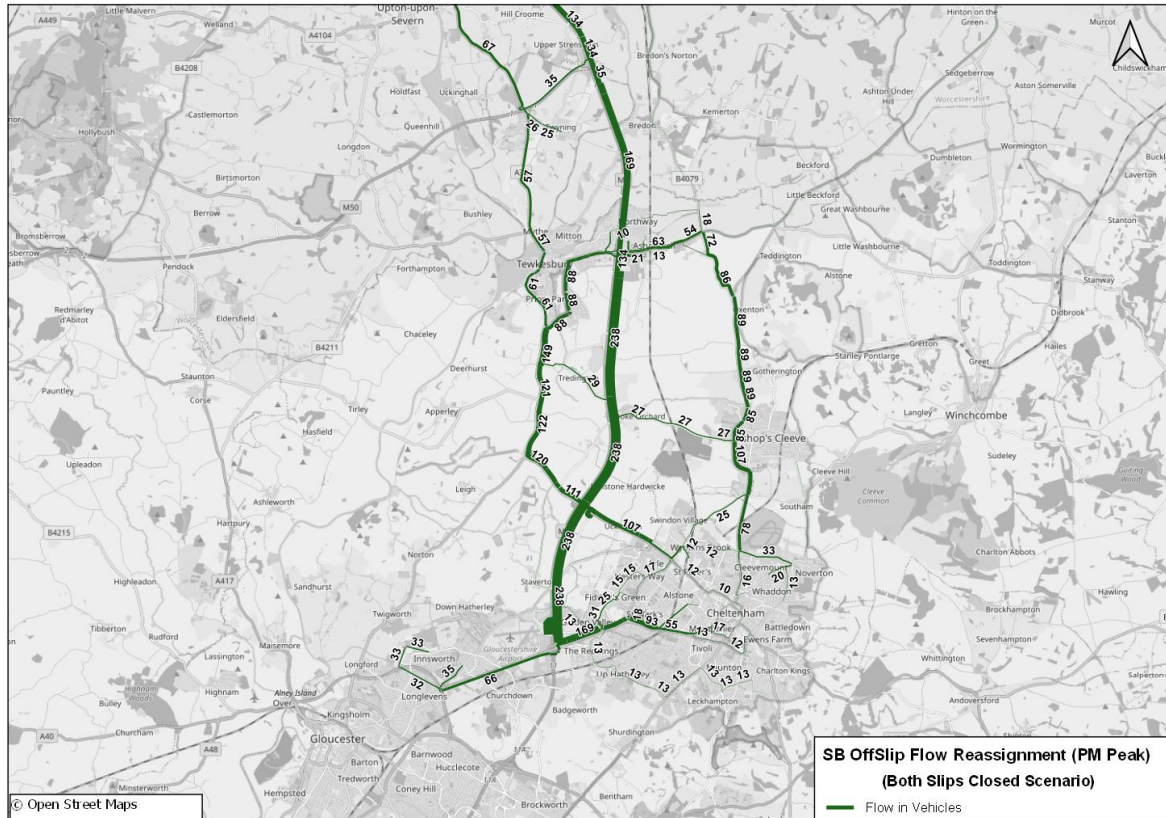


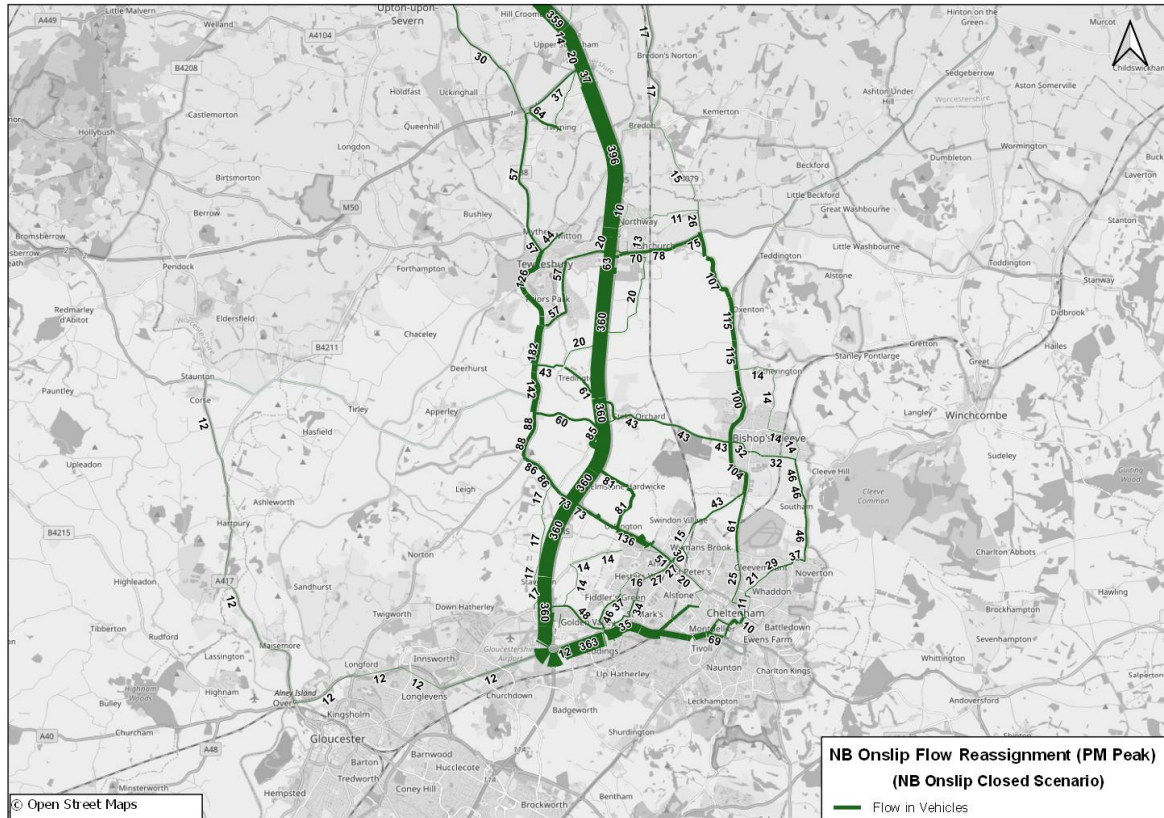












		AM Peak	Interpeak	PM Peak
		Time (mins:secs)	Time (mins:secs)	Time (mins:secs)
DM	M5 J9 - M5 J11	08:22	07:42	08:02
	M5 J11 - M5 J9	07:42	07:59	08:25
DS1	M5 J9 - M5 J11	08:48	08:11	08:29
	M5 J11 - M5 J9	08:09	08:21	08:32
DS2 (SB off-slip closed)	M5 J9 - M5 J11	08:25	08:10	08:23
	M5 J11 - M5 J9	08:09	08:21	08:32
DS3 (both slip roads closed)	M5 J9 - M5 J11	08:25	08:10	08:23
	M5 J11 - M5 J9	08:08	08:20	08:36
DS4 (NB on-slip closed, SB off-slip re-open)	M5 J9 - M5 J11	08:43	08:11	08:28
	M5 J11 - M5 J9	08:09	08:20	08:36

# ATKINS

Member of the SNC-Lavalin Group

5th Floor, Block 5  
Shire Hall  
Bearland  
Gloucester  
GL1 2TH

Tel: +44 (0) 8000 514 514