

A1 in Northumberland: Morpeth to Ellingham

Scheme Number: TR010041

6.5 Environmental Statement – Figure 9.4 Non-Statutory Designated Sites

Part A

APFP Regulation 5(2)(a)

Planning Act 2008

Infrastructure Planning (Applications: Prescribed
Forms and Procedure) Regulations 2009

June 2020

Infrastructure Planning

Planning Act 2008

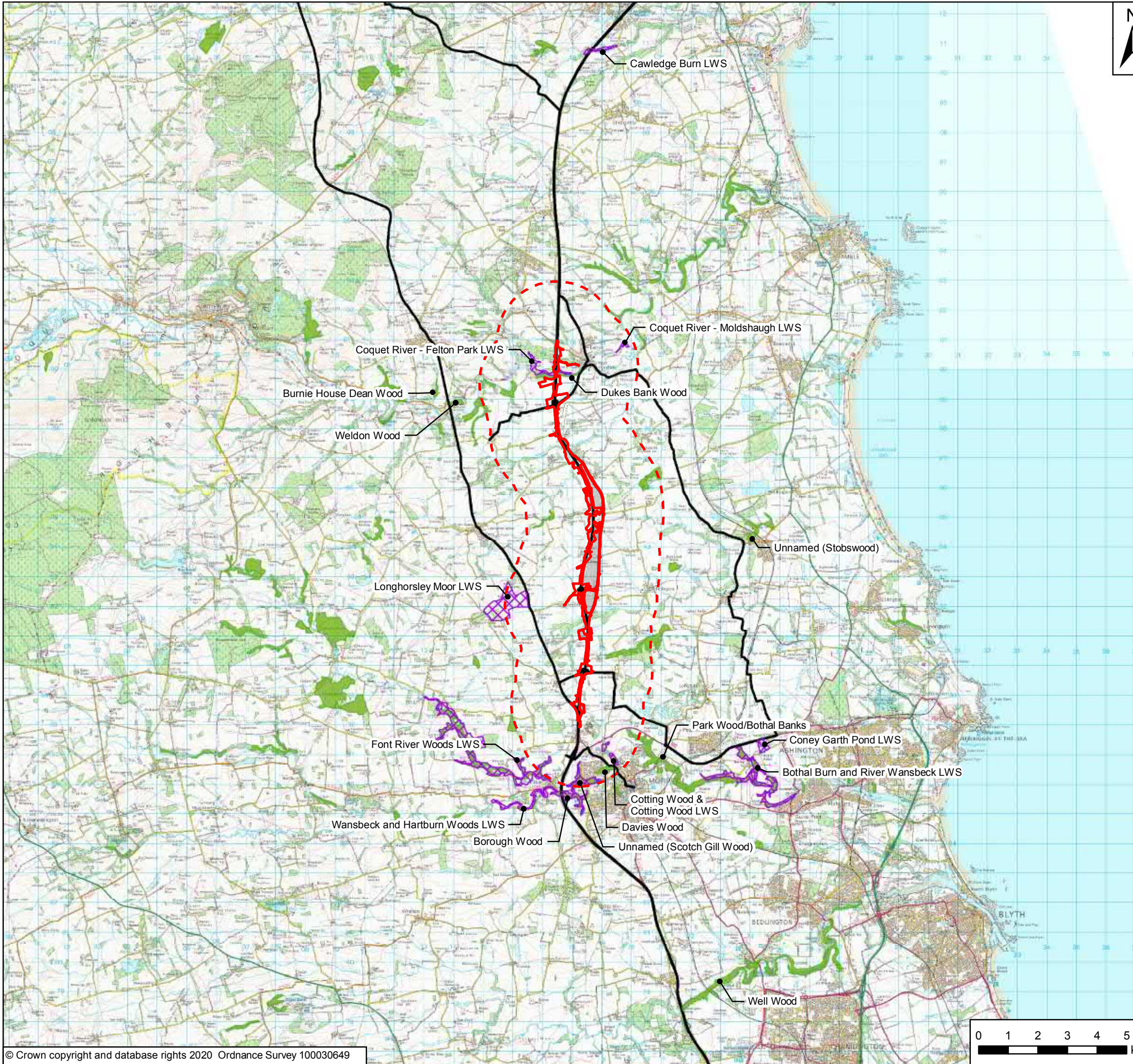
**The Infrastructure Planning
(Applications: Prescribed Forms and
Procedure) Regulations 2009**

**The A1 in Northumberland: Morpeth to Ellingham
Development Consent Order 20[xx]**

Environmental Statement - Figures

Regulation Reference:	APFP Regulation 5(2)(a)
Planning Inspectorate Scheme Reference	TR010041
Application Document Reference	TR010041/APP/6.5
Author:	A1 in Northumberland: Morpeth to Ellingham Project Team, Highways England

Version	Date	Status of Version
Rev 0	June 2020	Application Issue



- Key**
- Order Limits
 - Areas Excluded from Order Limits
 - 2km Study Area
 - Affected Road Network
 - Ancient Woodland Inventory
 - Local Wildlife and Geological Sites



Rev	Date	Description	By	Chk'd	App'd
P05	June 2020	Fifth Issue	GH	JF	NM
P04	16/01/20	Fourth Issue	GH	JF	NM
P03	20/09/19	Third Issue	GH	JF	NM
P02	05/07/19	Second Issue	GH	JF	NM
P01	24/04/19	First Issue	GH	NM	KS

Client

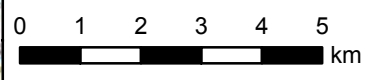
Project Title: A1 in Northumberland: Morpeth to Ellingham

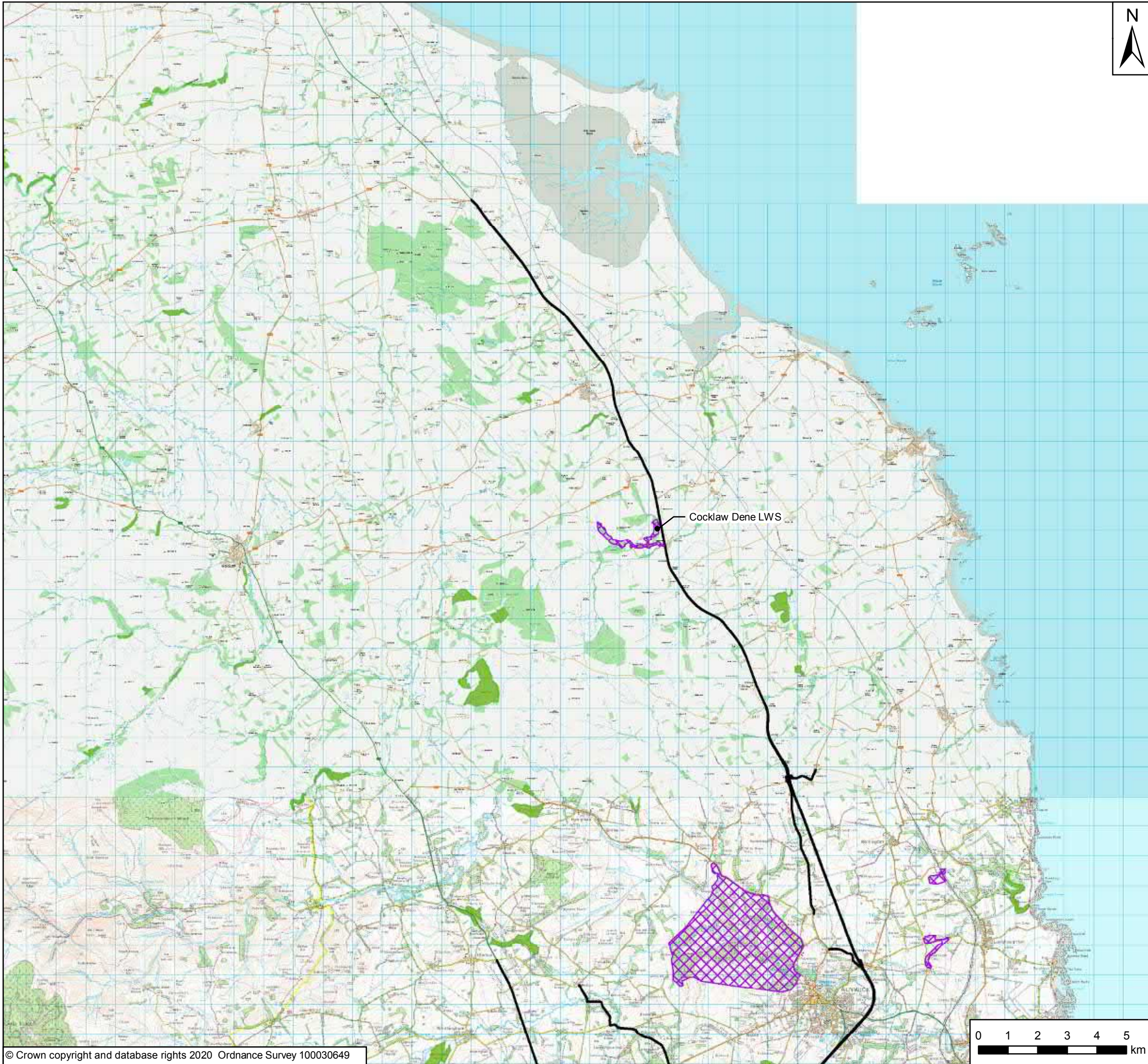
Drawing Title: Figure 9.4 Non-Statutory Designated Sites
Page 1 of 2

Scale	Drawn	Checked	Approved	Authorised
1:125,000	GH	NM	KS	DM
Original Size	Date	Date	Date	Date
A3	24/04/19	24/04/19	24/04/19	24/04/19

Drawing Status: For Information
Suitability: S1

Drawing Number Project HE551459	Originator WSP	Volume 6.5	Project Ref. No. 70044136
M2F Location	RP Type	LE Role	1942 Number
			Revision P05





Key

- Order Limits
- Areas Excluded from Order Limits
- 2km Study Area
- Affected Road Network
- Ancient Woodland Inventory
- Local Wildlife and Geological Sites



Rev	Date	Description	By	Chk'd	App'd
P05	June 2020	Fifth Issue	GH	JF	NM
P04	16/01/20	Fourth Issue	GH	JF	NM
P03	20/09/19	Third Issue	GH	JF	NM
P02	05/07/19	Second Issue	GH	JF	NM
P01	24/04/19	First Issue	GH	NM	KS

Client

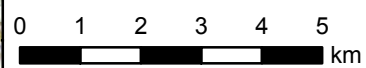
Project Title: A1 in Northumberland: Morpeth to Ellingham

Drawing Title: Figure 9.4 Non-Statutory Designated Sites
Page 2 of 2

Scale	Drawn	Checked	Approved	Authorised
1:125,000	GH	NM	KS	DM
Original Size	Date	Date	Date	Date
A3	24/04/19	24/04/19	24/04/19	24/04/19

Drawing Status: For Information
Suitability: S1

Drawing Number Project HE551459	Originator WSP	Volume 6.5	Project Ref. No. 70044136
M2F Location	RP Type	LE Role	1942 Number
			Revision P05



© Crown copyright 2020.

You may re-use this information (not including logos) free of charge in any format or medium, under the terms of the Open Government Licence. To view this licence:

visit www.nationalarchives.gov.uk/doc/open-government-licence/
write to the Information Policy Team, The National Archives,
Kew, London TW9 4DU, or email
psi@nationalarchives.gsi.gov.uk.

This document is also available on our website at www.gov.uk/highways

If you have any enquiries about this document A1inNorthumberland@highwaysengland.co.uk
or call 0300 470 4580*.

*Calls to 03 numbers cost no more than a national rate call to an 01 or 02 number and must count towards any inclusive minutes in the same way as 01 and 02 calls.

These rules apply to calls from any type of line including mobile, BT, other fixed line or payphone. Calls may be recorded or monitored.

Registered office Bridge House, 1 Walnut Tree Close, Guildford GU1 4LZ
Highways England Company Limited registered in England and Wales number 09346363