

A1 in Northumberland: Morpeth to Ellingham

Scheme Number: TR010041

6.6 Environmental Statement – Figure 11.2 Bedrock Geology

Part B

APFP Regulation 5(2)(a)

Planning Act 2008

Infrastructure Planning (Applications: Prescribed
Forms and Procedure) Regulations 2009

June 2020

Infrastructure Planning

Planning Act 2008

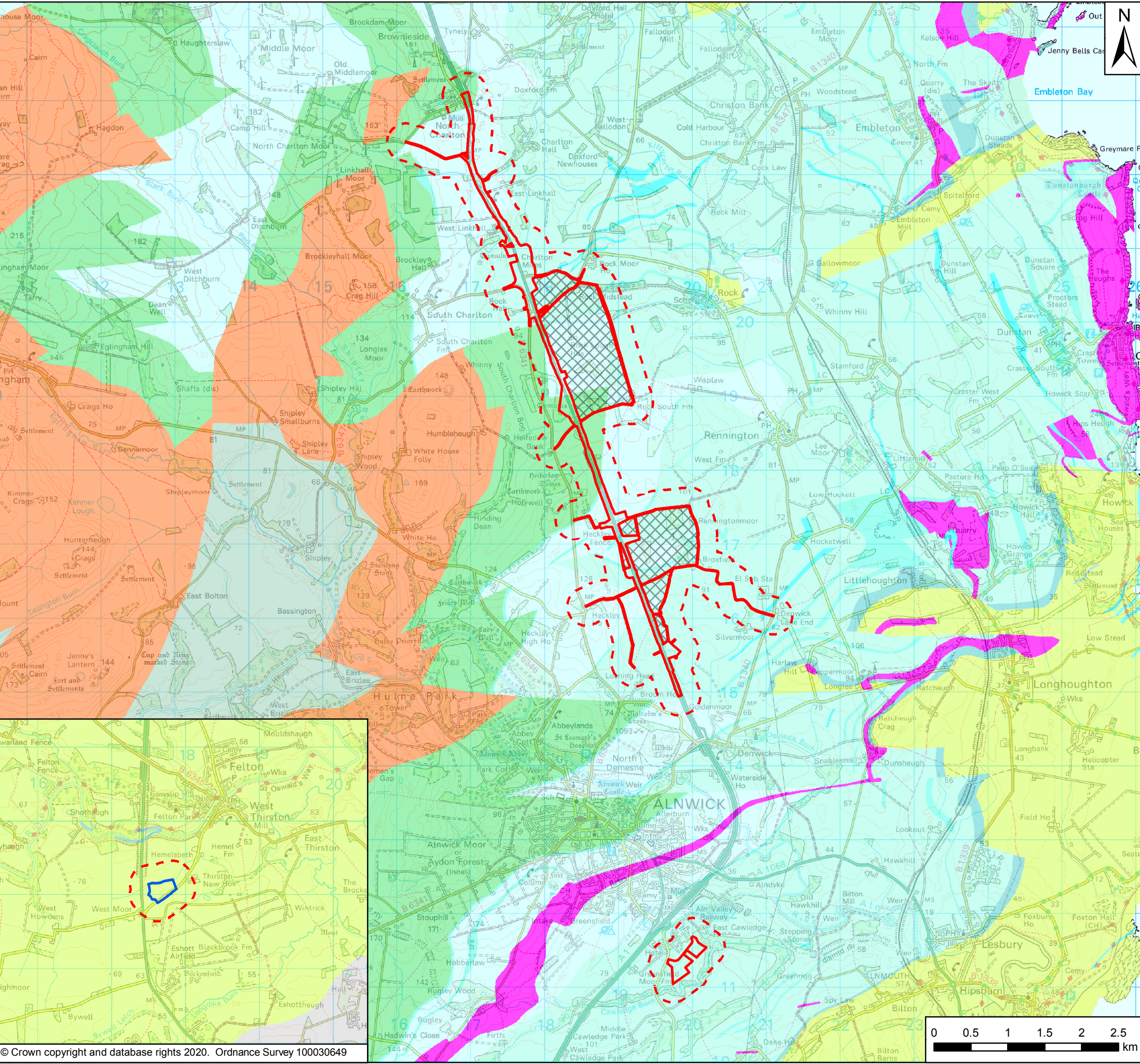
**The Infrastructure Planning
(Applications: Prescribed Forms and
Procedure) Regulations 2009**

The A1 in Northumberland: Morpeth to Ellingham
Development Consent Order 20[xx]

Environmental Statement – Figures

Regulation Reference:	APFP Regulation 5(2)(a)
Planning Inspectorate Scheme Reference	TR010041
Application Document Reference	TR010041/APP/6.6
Author:	A1 in Northumberland: Morpeth to Ellingham Project Team, Highways England

Version	Date	Status of Version
Rev 0	June 2020	Application Issue



Key

- Order Limits
- Areas Excluded from Order Limits
- Main Compound
- 250m Study Area

Bedrock Geology

- Alston Formation - Limestone, Sandstone, Siltstone And Mudstone
- Ballagan Formation - Sandstone, Siltstone and Dolimitic Limestone
- Corbridge Limestone - Limestone
- Eelwell Limestone Member - Limestone
- Four Fathom Limestone Member - Limestone
- Great Limestone Member - Limestone
- Great Whin Sill - Quartz-microgabbro
- Limestone Member - Limestone
- Oxford Limestone Member - Limestone
- Pennine Lower Coal Measures Formation - Mudstone, Siltstone and Sandstone
- Sandstone Formation - Sandstone
- Scremerston Coal Member - Sandstone, Siltstone and Mudstone
- Stainmore Formation - Mudstone, Siltstone And Sandstone
- Three Yard Limestone Member - Limestone
- Tyne Limestone Formation and Alston Formation (undifferentiated) - Limestone, Sandstone, Siltstone and Mudstone

Rev	Date	Description	By	Chk'd	App'd
P03	June 2020	Third Issue	GH	VW	KS
P02	09/12/19	Second Issue	GH	VW	KS
P01	31/07/19	First Issue	GH	VW	KS

Client

Project Title: A1 in Northumberland: Morpeth to Ellingham

Drawing Title: Figure 11.2 Bedrock Geology

Scale	Drawn	Checked	Approved	Authorised
1:50,000	GH	VW	KS	NR
Original Size	Date	Date	Date	Date
A3	31/07/19	31/07/19	31/07/19	31/07/19

Drawing Status: For Information Suitability: S1

Drawing Number	Originator	Volume	Project Ref. No.
HE551459	WSP	6.6	70044137
Location	Type	Role	Number
A2E	RP	LE	2130
			P03



© Crown copyright 2020.

You may re-use this information (not including logos) free of charge in any format or medium, under the terms of the Open Government Licence. To view this licence: visit www.nationalarchives.gov.uk/doc/open-government-licence/ write to the Information Policy Team, The National Archives, Kew, London TW9 4DU, or email psi@nationalarchives.gsi.gov.uk.

This document is also available on our website at www.gov.uk/highways

If you have any enquiries about this document A1inNorthumberland@highwaysengland.co.uk or call 0300 470 4580*.

*Calls to 03 numbers cost no more than a national rate call to an 01 or 02 number and must count towards any inclusive minutes in the same way as 01 and 02 calls.

These rules apply to calls from any type of line including mobile, BT, other fixed line or payphone. Calls may be recorded or monitored.

Registered office Bridge House, 1 Walnut Tree Close, Guildford GU1 4LZ
Highways England Company Limited registered in England and Wales number 09346363