

# A1 in Northumberland: Morpeth to Ellingham

**Scheme Number: TR010041**

## **6.6 Environmental Statement – Figure 8.3 Historic Landscape Characterisation**

**Part B**

APFP Regulation 5(2)(a)

Planning Act 2008

Infrastructure Planning (Applications: Prescribed  
Forms and Procedure) Regulations 2009

June 2020

Infrastructure Planning

Planning Act 2008

**The Infrastructure Planning  
(Applications: Prescribed Forms and  
Procedure) Regulations 2009**

The A1 in Northumberland: Morpeth to Ellingham  
Development Consent Order 20[xx]

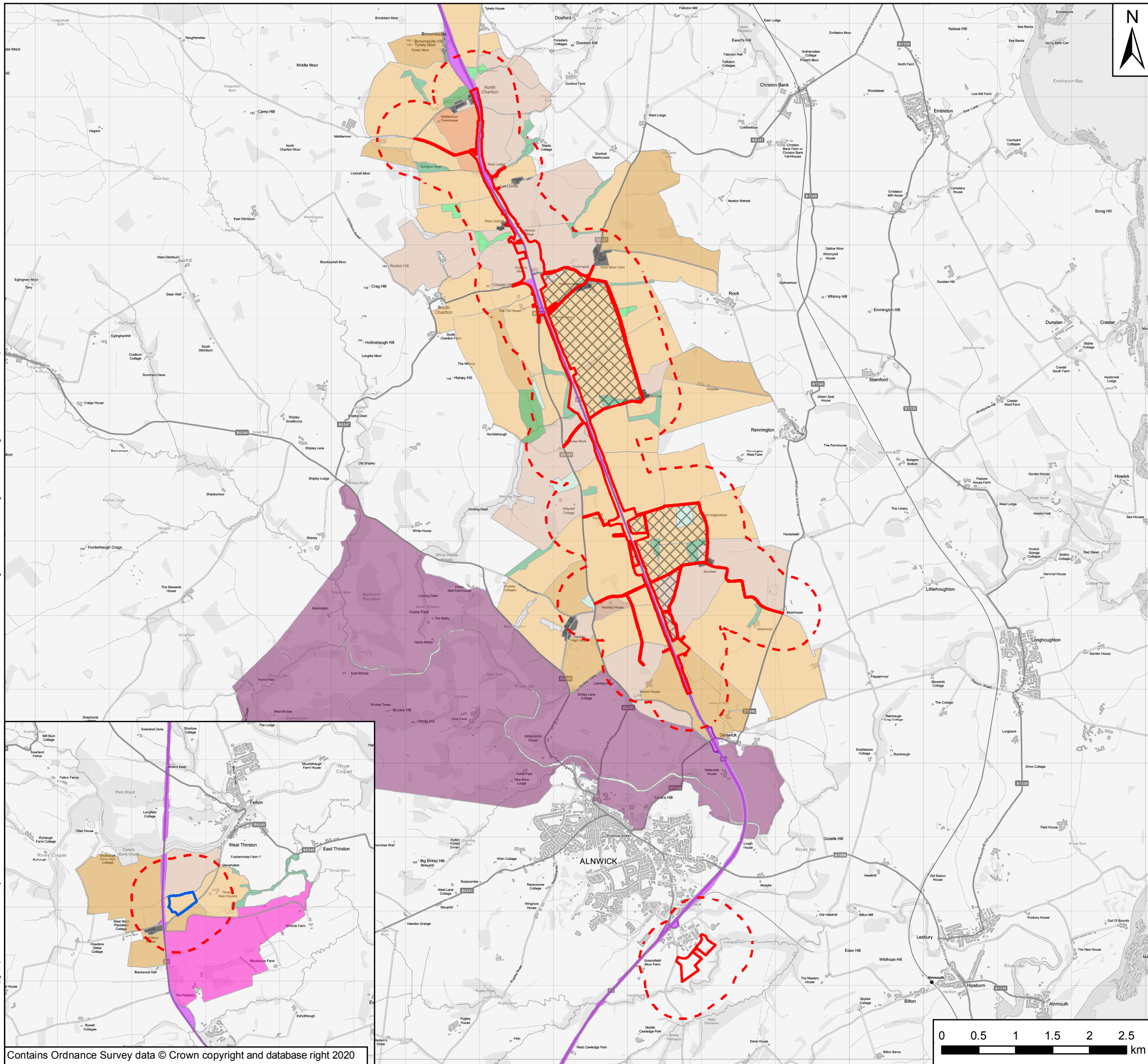
---

**Environmental Statement – Figures**

---

<b>Regulation Reference:</b>	APFP Regulation 5(2)(a)
<b>Planning Inspectorate Scheme Reference</b>	TR010041
<b>Application Document Reference</b>	TR010041/APP/6.6
<b>Author:</b>	A1 in Northumberland: Morpeth to Ellingham Project Team, Highways England

<b>Version</b>	<b>Date</b>	<b>Status of Version</b>
Rev 0	June 2020	Application Issue



- Key**
- Order Limits
  - Areas Excluded from Order Limits
  - Main Compound
  - 500m Study Area
- Historic Landscape Characterisation**
- Communications, pre 1860
  - Fields, 17th to mid 18th century
  - Fields, pre 1860
  - Fields, mid 18th to 19th century
  - Fields, late 19th century
  - Fields, 20th century
  - Industry, pre 1860
  - Ornamental Parkland Recreation, pre 1860
  - Rough Land, pre 1860
  - Settlement, pre 1860
  - Settlement, 20th century
  - Woodland, pre 1860
  - Woodland, late 19th century
  - Woodland, 20th century

Rev	Date	Description	By	Chk'd	App'd
P03	June 2020	Third Issue	GH	AG	KS
P02	10/12/19	Second Issue	GH	LM	KS
P01	31/07/19	First Issue	GH	LM	KS

Client



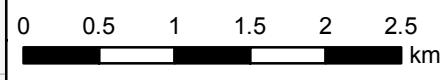
Project Title **A1 in Northumberland: Morpeth to Ellingham**

Drawing Title **Figure 8.3 Historic Landscape Characterisation**

Scale	Drawn	Checked	Approved	Authorised
1:50,000	GH	LM	KS	NR
Original Size	Date	Date	Date	Date
A3	31/07/19	31/07/19	31/07/19	31/07/19

Drawing Status **For Information** Suitability **S1**

Drawing Number Project <b>HE551459</b>	Originator <b>WSP</b>	Volume <b>6.6</b>	Project Ref. No. <b>70044137</b>
<b>A2E</b> Location	<b>RP</b> Type	<b>LE</b> Role	<b>2130</b> Number
			Revision <b>P03</b>



© Crown copyright 2020.

You may re-use this information (not including logos) free of charge in any format or medium, under the terms of the Open Government Licence. To view this licence: visit [www.nationalarchives.gov.uk/doc/open-government-licence/](http://www.nationalarchives.gov.uk/doc/open-government-licence/) write to the Information Policy Team, The National Archives, Kew, London TW9 4DU, or email [psi@nationalarchives.gsi.gov.uk](mailto:psi@nationalarchives.gsi.gov.uk).

This document is also available on our website at [www.gov.uk/highways](http://www.gov.uk/highways)

If you have any enquiries about this document [A1inNorthumberland@highwaysengland.co.uk](mailto:A1inNorthumberland@highwaysengland.co.uk) or call 0300 470 4580\*.

\*Calls to 03 numbers cost no more than a national rate call to an 01 or 02 number and must count towards any inclusive minutes in the same way as 01 and 02 calls.

These rules apply to calls from any type of line including mobile, BT, other fixed line or payphone. Calls may be recorded or monitored.

Registered office Bridge House, 1 Walnut Tree Close, Guildford GU1 4LZ  
Highways England Company Limited registered in England and Wales number 09346363