

A1 in Northumberland: Morpeth to Ellingham

Scheme Number: TR010041

6.6 Environmental Statement – Figure 7.10 Landscape Mitigation Plan

Part B

APFP Regulation 5(2)(a)

Planning Act 2008

Infrastructure Planning (Applications: Prescribed
Forms and Procedure) Regulations 2009

June 2020

Infrastructure Planning

Planning Act 2008

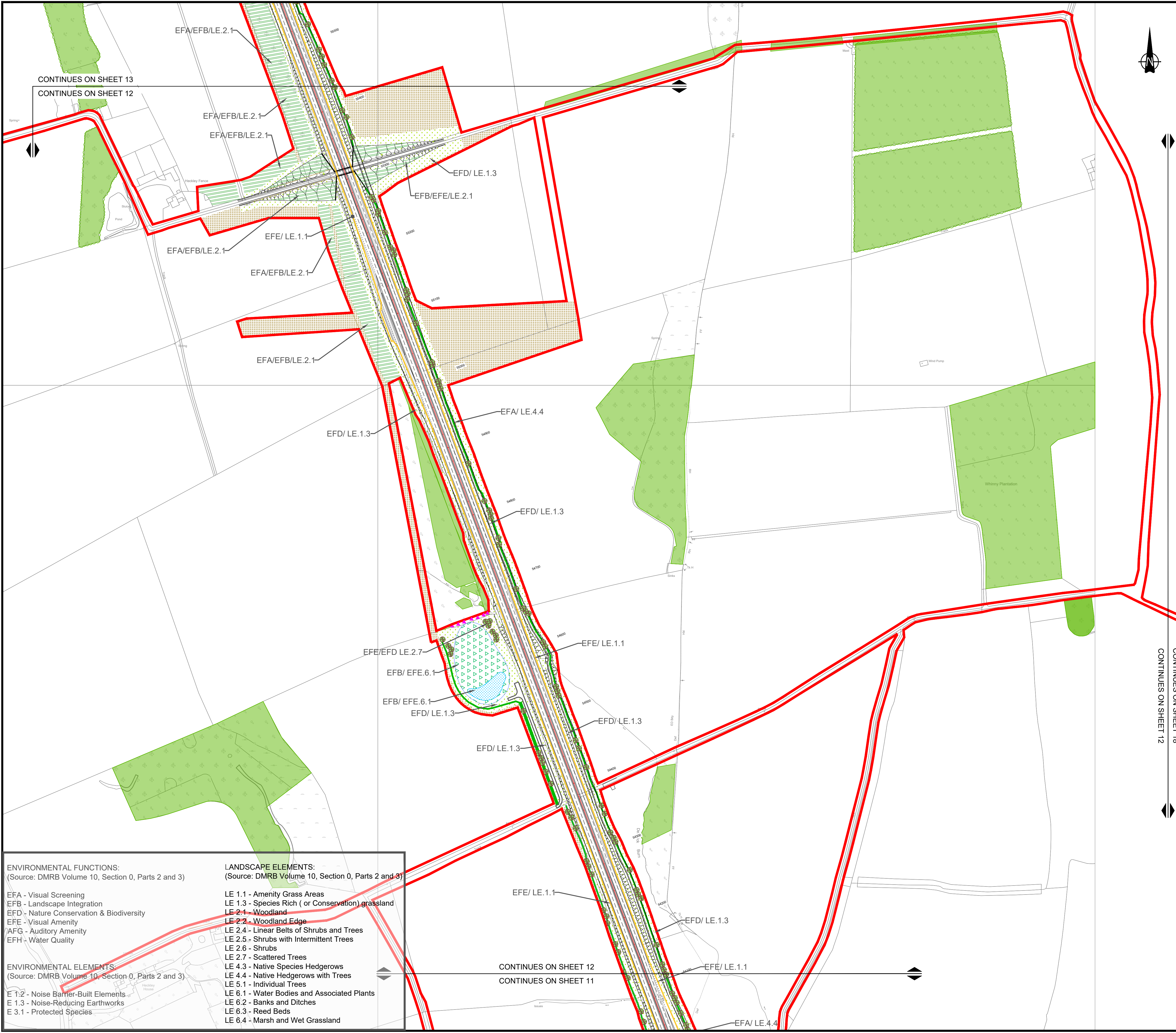
**The Infrastructure Planning
(Applications: Prescribed Forms and
Procedure) Regulations 2009**

**The A1 in Northumberland: Morpeth to Ellingham
Development Consent Order 20[xx]**

Environmental Statement – Figures

Regulation Reference:	APFP Regulation 5(2)(a)
Planning Inspectorate Scheme Reference	TR010041
Application Document Reference	TR010041/APP/6.6
Author:	A1 in Northumberland: Morpeth to Ellingham Project Team, Highways England

Version	Date	Status of Version
Rev 0	June 2020	Application Issue



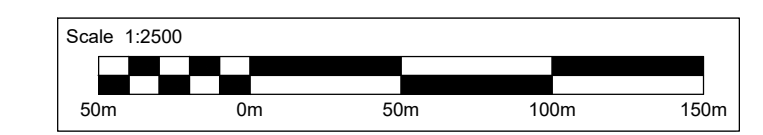
Red Line Boundary

Existing Vegetation

- Existing Habitats
- Existing Hedgerow to be Retained

Proposed Vegetation

- LE 1.1 Amenity Grass Areas
- LE 1.3 Species Rich (or Conservation) Grassland
- LE 2.1 and 2.2 Woodland Planting (Understorey to be seeded)
- LE 2.4 Linear Belts of Shrubs and Trees
- LE 2.6 Shrubs
- LE 2.7 Scattered Trees
- LE 4.4 Native Hedgerows with Trees
- LE 6.1 Swale/ Marginal Planting/ Wetland (for Attenuation Pond)
- Areas assumed to be return to agriculture
- Ecological Mitigation: Indicative Bat Box Locations



Rev.	Date	Description	By	Eng' Chk	Disc' Chk	App'd
P08	JUNE 2020	EIGHT DRAFT		CM	VW	KS
P07	19/02/2020	SEVENTH DRAFT		LA	SL	AF
P06	10/02/2020	SIXTH DRAFT		LA	SL	AF
P05	04/02/2020	FIFTH DRAFT		LA	SL	AF
P04	29/01/2020	FORTH DRAFT		LA	SL	AF
P03	03/12/2019	THIRD DRAFT		LA	SL	AF
P02	21/11/2019	SECOND DRAFT		LA	SL	AF
P01	28/10/2019	FIRST DRAFT		LA	SL	AF

Subsidiary: DCO SUBMISSION Status: S2

PINS Reference Number: TR010041/APP/6.6



Project Title: A1 in Northumberland Morpeth to Ellingham

Drawing Title: Figure 7.10 Landscape Mitigation Plan SHEET 2 OF 7

Scale	Drawn	Eng. Check	Approved	Authorised
1:2500	LA	SL	AF	AF
Original Size	Date	Date	Date	Date
A1	19/02/2020	19/02/2020	19/02/2020	19/02/2020

Drawing Number: HE551459-WSP-ELS-A2E-DR-LE-1816
Revision: P08
PW Stage Code: 0

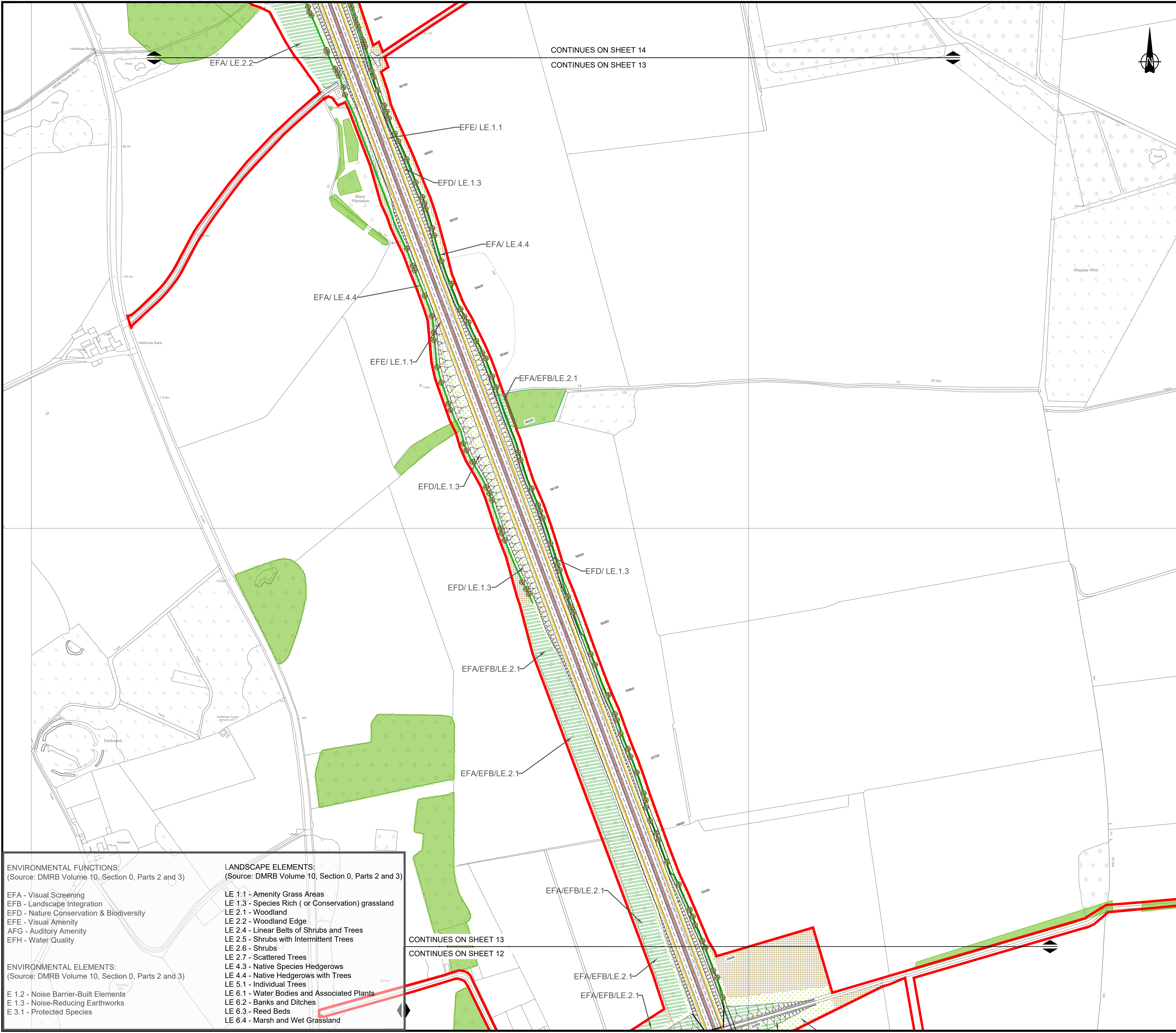
- ENVIRONMENTAL FUNCTIONS:**
(Source: DMRB Volume 10, Section 0, Parts 2 and 3)
- EFA - Visual Screening
 - EFB - Landscape Integration
 - EFD - Nature Conservation & Biodiversity
 - EFE - Visual Amenity
 - AFG - Auditory Amenity
 - EFH - Water Quality
- ENVIRONMENTAL ELEMENTS:**
(Source: DMRB Volume 10, Section 0, Parts 2 and 3)
- E 1.2 - Noise Barrier-Built Elements
 - E 1.3 - Noise-Reducing Earthworks
 - E 3.1 - Protected Species
- LANDSCAPE ELEMENTS:**
(Source: DMRB Volume 10, Section 0, Parts 2 and 3)
- LE 1.1 - Amenity Grass Areas
 - LE 1.3 - Species Rich (or Conservation) grassland
 - LE 2.1 - Woodland
 - LE 2.2 - Woodland Edge
 - LE 2.4 - Linear Belts of Shrubs and Trees
 - LE 2.5 - Shrubs with Intermittent Trees
 - LE 2.6 - Shrubs
 - LE 2.7 - Scattered Trees
 - LE 4.3 - Native Species Hedgerows
 - LE 4.4 - Native Hedgerows with Trees
 - LE 5.1 - Individual Trees
 - LE 6.1 - Water Bodies and Associated Plants
 - LE 6.2 - Banks and Ditches
 - LE 6.3 - Reed Beds
 - LE 6.4 - Marsh and Wet Grassland

\\uk.wspgroup.com\central\data\Projects\70038006 - A1 in Northumberland\02 WIP\LA Landscape\01 Model\landscape\New folder

CONTINUES ON SHEET 13
CONTINUES ON SHEET 12

CONTINUES ON SHEET 12
CONTINUES ON SHEET 11

CONTINUES ON SHEET 18
CONTINUES ON SHEET 12



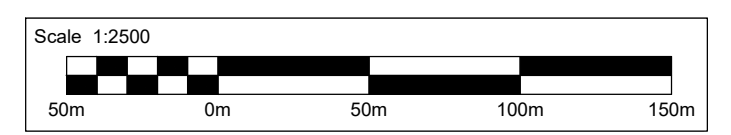
Red Line Boundary

Existing Vegetation

- Existing Habitats
- Existing Hedgerow to be Retained

Proposed Vegetation

- LE 1.1 Amenity Grass Areas
- LE 1.3 Species Rich (or Conservation) Grassland
- LE 2.1 and 2.2 Woodland Planting (Understorey to be seeded)
- LE 2.4 Linear Belts of Shrubs and Trees
- LE 2.6 Shrubs
- LE 2.7 Scattered Trees
- LE 4.4 Native Hedgerows with Trees
- LE 6.1 Swale/ Marginal Planting/ Wetland (for Attenuation Pond)
- Areas assumed to be return to agriculture
- Ecological Mitigation: Indicative Bat Box Locations



Rev.	Date	Description	By	Eng' Chk	Disc' Chk	App'd
P08	JUNE 2020	EIGHT DRAFT		CM	VW	KS
P07	19/02/2020	SEVENTH DRAFT		LA	SL	AF
P06	10/02/2020	SIXTH DRAFT		LA	SL	AF
P05	04/02/2020	FIFTH DRAFT		LA	SL	AF
P04	29/01/2020	FORTH DRAFT		LA	SL	AF
P03	03/12/2019	THIRD DRAFT		LA	SL	AF
P02	21/11/2019	SECOND DRAFT		LA	SL	AF
P01	28/10/2019	FIRST DRAFT		LA	SL	AF

Subsidiary: DCO SUBMISSION Status: S2

PINS Reference Number: TR010041/APP/6.6



Project Title: A1 in Northumberland Morpeth to Ellingham

Drawing Title: Figure 7.10 Landscape Mitigation Plan SHEET 3 OF 7

Scale	Drawn	Eng. Check	Approved	Authorised
1:2500	LA	SL	AF	AF
Original Size	Date	Date	Date	Date
A1	19/02/2020	19/02/2020	19/02/2020	19/02/2020

Drawing Number: HE551459-WSP-ELS-A2E-DR-LE-1816
 Revision: P08
 PW Stage Code: 0

ENVIRONMENTAL FUNCTIONS:
 (Source: DMRB Volume 10, Section 0, Parts 2 and 3)

- EFA - Visual Screening
- EFB - Landscape Integration
- EFD - Nature Conservation & Biodiversity
- EFE - Visual Amenity
- AFG - Auditory Amenity
- EFH - Water Quality

ENVIRONMENTAL ELEMENTS:
 (Source: DMRB Volume 10, Section 0, Parts 2 and 3)

- E 1.2 - Noise Barrier-Built Elements
- E 1.3 - Noise-Reducing Earthworks
- E 3.1 - Protected Species

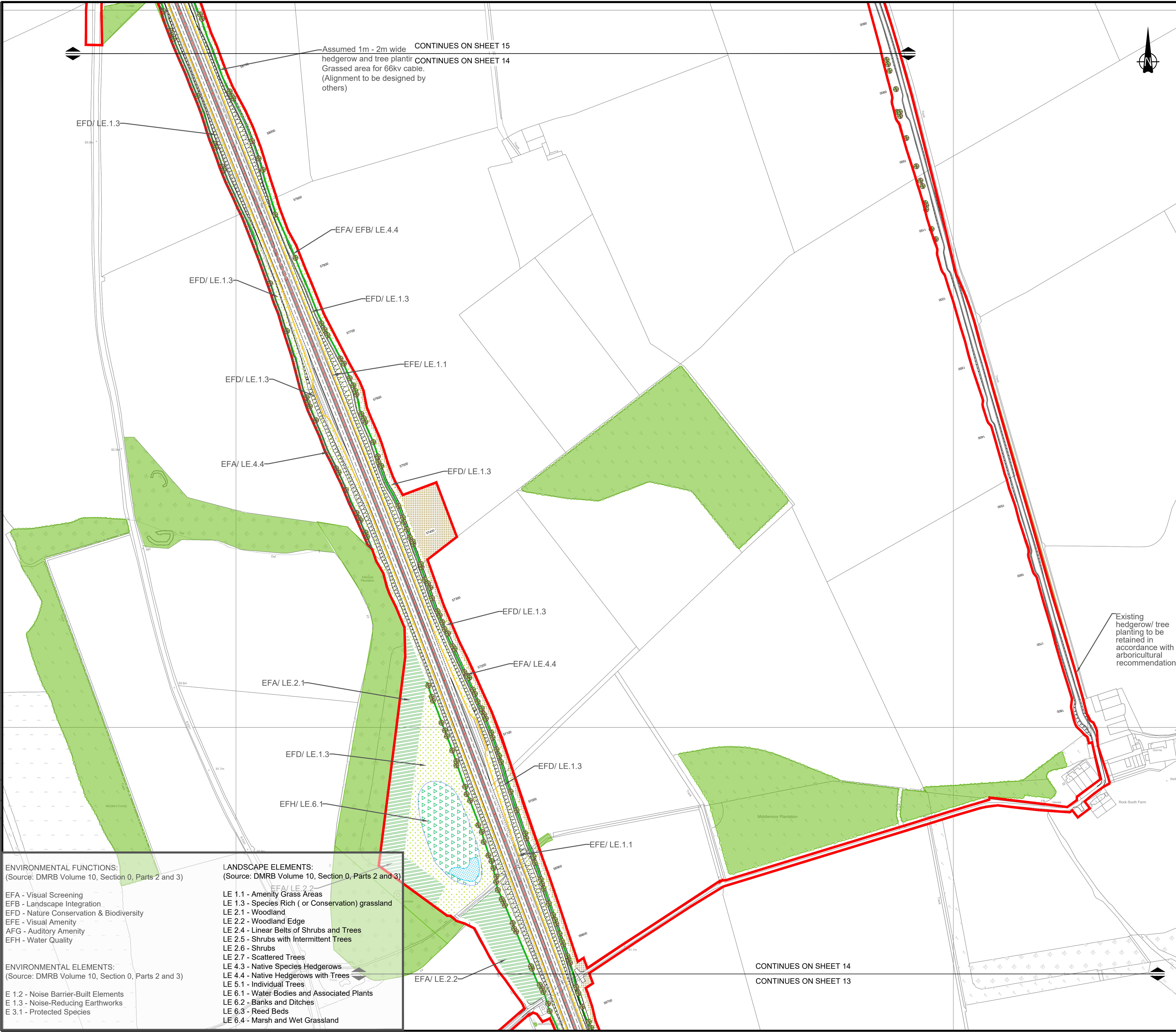
LANDSCAPE ELEMENTS:
 (Source: DMRB Volume 10, Section 0, Parts 2 and 3)

- LE 1.1 - Amenity Grass Areas
- LE 1.3 - Species Rich (or Conservation) grassland
- LE 2.1 - Woodland
- LE 2.2 - Woodland Edge
- LE 2.4 - Linear Belts of Shrubs and Trees
- LE 2.5 - Shrubs with Intermittent Trees
- LE 2.6 - Shrubs
- LE 2.7 - Scattered Trees
- LE 4.3 - Native Species Hedgerows
- LE 4.4 - Native Hedgerows with Trees
- LE 5.1 - Individual Trees
- LE 6.1 - Water Bodies and Associated Plants
- LE 6.2 - Banks and Ditches
- LE 6.3 - Reed Beds
- LE 6.4 - Marsh and Wet Grassland

\\uk.wspgroup.com\central_data\Projects\70038006 - A1 in Northumberland\02 WIP\LA Landscape\01 Model\landscape\New folder

CONTINUES ON SHEET 14
 CONTINUES ON SHEET 13

CONTINUES ON SHEET 13
 CONTINUES ON SHEET 12



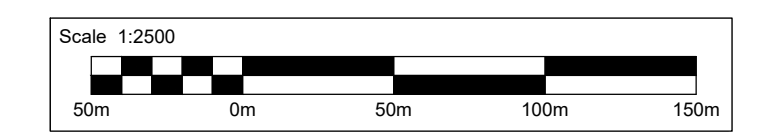
Red Line Boundary

Existing Vegetation

- Existing Habitats
- Existing Hedgerow to be Retained

Proposed Vegetation

- LE 1.1 Amenity Grass Areas
- LE 1.3 Species Rich (or Conservation) Grassland
- LE 2.1 and 2.2 Woodland Planting (Understorey to be seeded)
- LE 2.4 Linear Belts of Shrubs and Trees
- LE 2.6 Shrubs
- LE 2.7 Scattered Trees
- LE 4.4 Native Hedgerows with Trees
- LE 6.1 Swale/ Marginal Planting/ Wetland (for Attenuation Pond)
- Areas assumed to be return to agriculture
- Ecological Mitigation: Indicative Bat Box Locations



Rev.	Date	Description	By	Eng' Chk	Disc' Chk	App'd
P08	JUNE 2020	EIGHT DRAFT		CM	VW	KS DM
P07	19/02/2020	SEVENTH DRAFT		LA	SL	AF AF
P06	10/02/2020	SIXTH DRAFT		LA	SL	AF AF
P05	04/02/2020	FIFTH DRAFT		LA	SL	AF AF
P04	29/01/2020	FORTH DRAFT		LA	SL	AF AF
P03	03/12/2019	THIRD DRAFT		LA	SL	AF AF
P02	21/11/2019	SECOND DRAFT		LA	SL	AF AF
P01	28/10/2019	FIRST DRAFT		LA	SL	AF AF

Subsidiary: DCO SUBMISSION Status: S2

PINS Reference Number: TR010041/APP/6.6



Project Title: A1 in Northumberland Morpeth to Ellingham

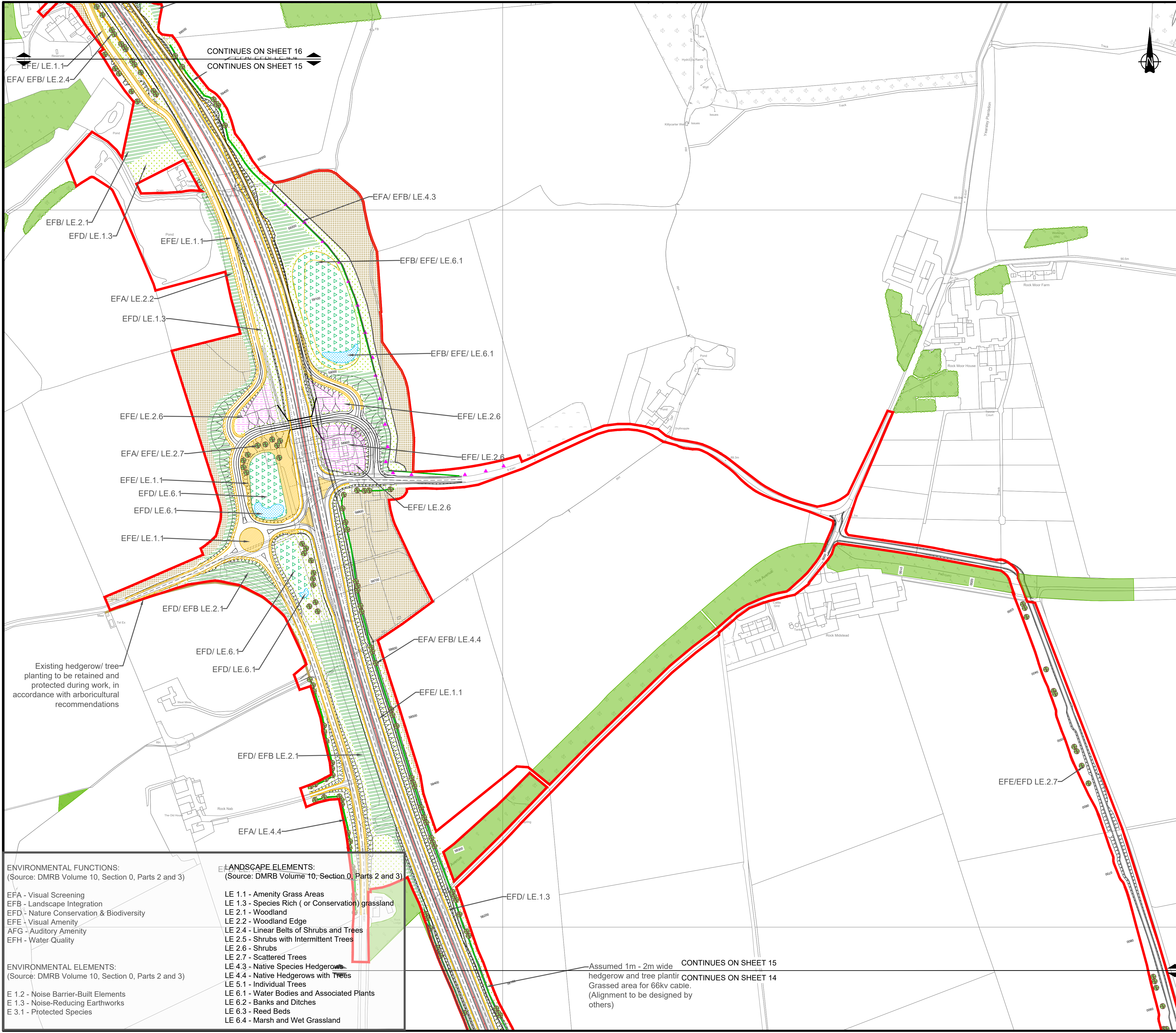
Drawing Title: Figure 7.10 Landscape Mitigation Plan SHEET 4 OF 7

Scale	Drawn	Eng. Check	Approved	Authorised
1:2500	LA	SL	AF	AF
Original Size	Date	Date	Date	Date
A1	19/02/2020	19/02/2020	19/02/2020	19/02/2020
Drawing Number	Revision			
HE551459-WSP-ELS-A2E-DR-LE-1816	P08			
	PW Stage Code			
	0			

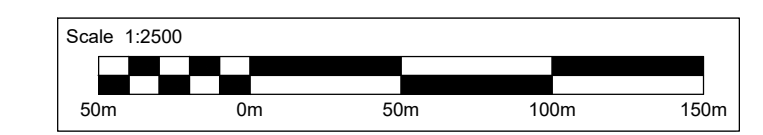
- ENVIRONMENTAL FUNCTIONS:**
(Source: DMRB Volume 10, Section 0, Parts 2 and 3)
- EFA - Visual Screening
 - EFB - Landscape Integration
 - EFD - Nature Conservation & Biodiversity
 - EFE - Visual Amenity
 - AFG - Auditory Amenity
 - EFH - Water Quality
- ENVIRONMENTAL ELEMENTS:**
(Source: DMRB Volume 10, Section 0, Parts 2 and 3)
- E 1.2 - Noise Barrier-Built Elements
 - E 1.3 - Noise-Reducing Earthworks
 - E 3.1 - Protected Species
- LANDSCAPE ELEMENTS:**
(Source: DMRB Volume 10, Section 0, Parts 2 and 3)
- LE 1.1 - Amenity Grass Areas
 - LE 1.3 - Species Rich (or Conservation) grassland
 - LE 2.1 - Woodland
 - LE 2.2 - Woodland Edge
 - LE 2.4 - Linear Belts of Shrubs and Trees
 - LE 2.5 - Shrubs with Intermittent Trees
 - LE 2.6 - Shrubs
 - LE 2.7 - Scattered Trees
 - LE 4.3 - Native Species Hedgerows
 - LE 4.4 - Native Hedgerows with Trees
 - LE 5.1 - Individual Trees
 - LE 6.1 - Water Bodies and Associated Plants
 - LE 6.2 - Banks and Ditches
 - LE 6.3 - Reed Beds
 - LE 6.4 - Marsh and Wet Grassland

CONTINUES ON SHEET 14
CONTINUES ON SHEET 13

\\uk.wspgroup.com\central\data\Projects\700380xx\70038006 - A1 in Northumberland\02 WIPLA Landscape\01 Modellandscape\New folder



- Red Line Boundary
- Existing Vegetation**
 - Existing Habitats
 - Existing Hedgerow to be Retained
- Proposed Vegetation**
 - LE 1.1 Amenity Grass Areas
 - LE 1.3 Species Rich (or Conservation) Grassland
 - LE 2.1 and 2.2 Woodland Planting (Understorey to be seeded)
 - LE 2.4 Linear Belts of Shrubs and Trees
 - LE 2.6 Shrubs
 - LE 2.7 Scattered Trees
 - LE 4.4 Native Hedgerows with Trees
 - LE 6.1 Swale/ Marginal Planting/ Wetland (for Attenuation Pond)
 - Areas assumed to be returned to agriculture
 - Ecological Mitigation: Indicative Bat Box Locations



Rev.	Date	Description	By	Eng' Chk	Disc' Chk	App'd
P08	JUNE 2020	EIGHT DRAFT		CM	VW	KS DM
P07	19/02/2020	SEVENTH DRAFT		LA	SL	AF AF
P06	10/02/2020	SIXTH DRAFT		LA	SL	AF AF
P05	04/02/2020	FIFTH DRAFT		LA	SL	AF AF
P04	29/01/2020	FORTH DRAFT		LA	SL	AF AF
P03	03/12/2019	THIRD DRAFT		LA	SL	AF AF
P02	21/11/2019	SECOND DRAFT		LA	SL	AF AF
P01	28/10/2019	FIRST DRAFT		LA	SL	AF AF

Sustainability: DCO SUBMISSION Status: S2

PINS Reference Number: TR010041/APP/6.6



Project Title: A1 in Northumberland Morpeth to Ellingham

Drawing Title: Figure 7.10 Landscape Mitigation Plan SHEET 5 OF 7

Scale	Drawn	Eng Check	Approved	Authorised
1:2500	LA	SL	AF	AF
Original Size	Date	Date	Date	Date
A1	19/02/2020	19/02/2020	19/02/2020	19/02/2020
Drawing Number	Revision			
HE551459-WSP-ELS-A2E-DR-LE-1816	P08			
	PW Stage Code			
	0			

\\uk.wspgroup.com\central_data\Projects\70038006 - A1 in Northumberland\02 WIP\LA Landscape\01 Model\landscape\New folder

ENVIRONMENTAL FUNCTIONS:
(Source: DMRB Volume 10, Section 0, Parts 2 and 3)

- EFA - Visual Screening
- EFB - Landscape Integration
- EFD - Nature Conservation & Biodiversity
- EFE - Visual Amenity
- AFG - Auditory Amenity
- EFH - Water Quality

ENVIRONMENTAL ELEMENTS:
(Source: DMRB Volume 10, Section 0, Parts 2 and 3)

- E 1.2 - Noise Barrier-Built Elements
- E 1.3 - Noise-Reducing Earthworks
- E 3.1 - Protected Species

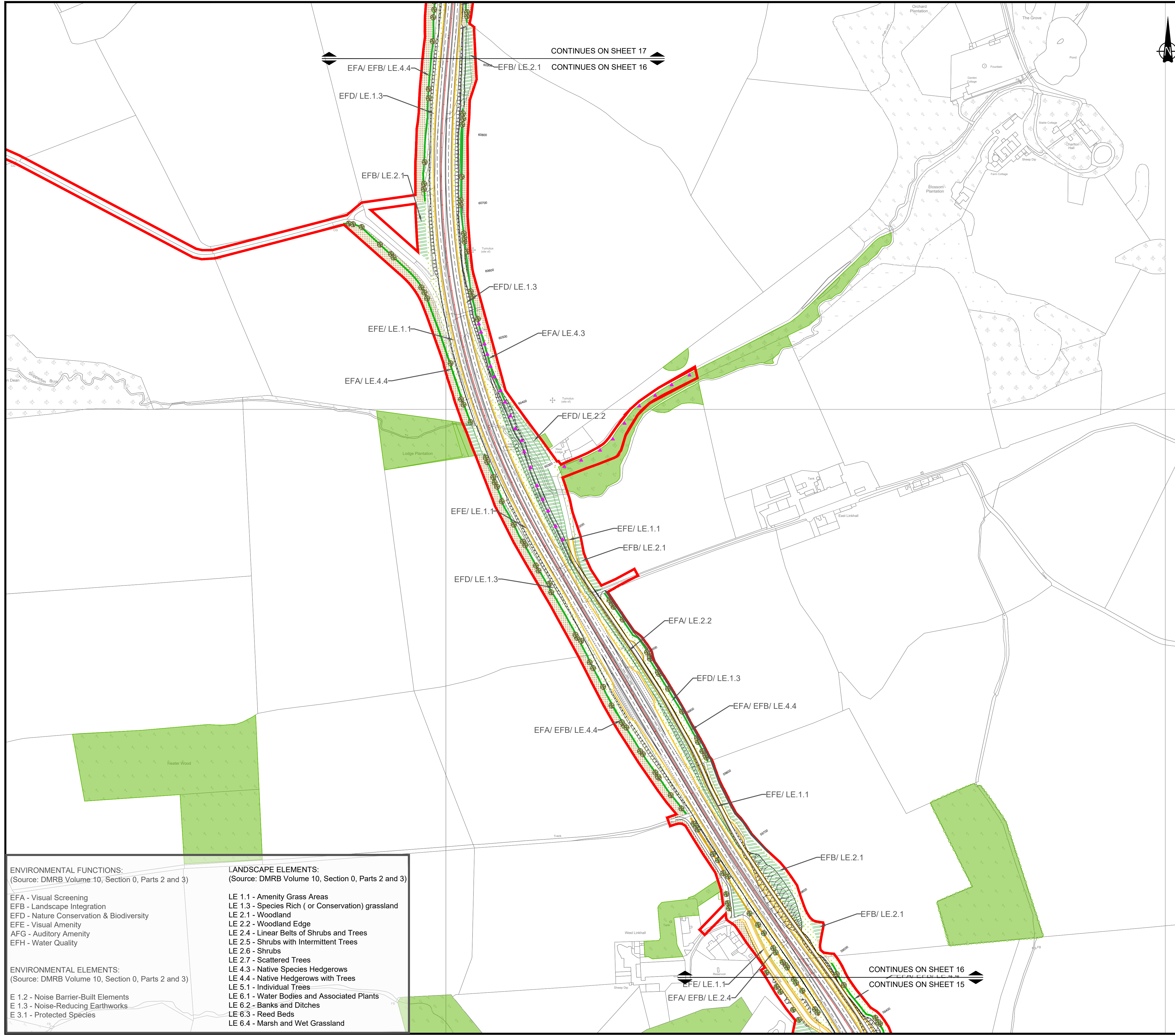
LANDSCAPE ELEMENTS:
(Source: DMRB Volume 10, Section 0, Parts 2 and 3)

- LE 1.1 - Amenity Grass Areas
- LE 1.3 - Species Rich (or Conservation) grassland
- LE 2.1 - Woodland
- LE 2.2 - Woodland Edge
- LE 2.4 - Linear Belts of Shrubs and Trees
- LE 2.5 - Shrubs with Intermittent Trees
- LE 2.6 - Shrubs
- LE 2.7 - Scattered Trees
- LE 4.3 - Native Species Hedgerows
- LE 4.4 - Native Hedgerows with Trees
- LE 5.1 - Individual Trees
- LE 6.1 - Water Bodies and Associated Plants
- LE 6.2 - Banks and Ditches
- LE 6.3 - Reed Beds
- LE 6.4 - Marsh and Wet Grassland

Assumed 1m - 2m wide hedgerow and tree planting Grassed area for 66kv cable. (Alignment to be designed by others)

CONTINUES ON SHEET 16
CONTINUES ON SHEET 15

CONTINUES ON SHEET 15
CONTINUES ON SHEET 14



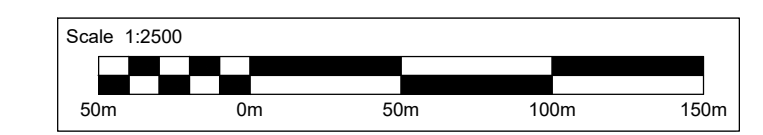
Red Line Boundary

Existing Vegetation

- Existing Habitats
- Existing Hedgerow to be Retained

Proposed Vegetation

- LE 1.1 Amenity Grass Areas
- LE 1.3 Species Rich (or Conservation) Grassland
- LE 2.1 and 2.2 Woodland Planting (Understorey to be seeded)
- LE 2.4 Linear Belts of Shrubs and Trees
- LE 2.6 Shrubs
- LE 2.7 Scattered Trees
- LE 4.4 Native Hedgerows with Trees
- LE 6.1 Swale/ Marginal Planting/ Wetland (for Attenuation Pond)
- Areas assumed to be return to agriculture
- Ecological Mitigation: Indicative Bat Box Locations



Rev.	Date	Description	By	Eng' Chk	Disc' Chk	App'd
P08	JUNE 2020	EIGHT DRAFT		CM	VW	KS DM
P07	19/02/2020	SEVENTH DRAFT		LA	SL	AF AF
P06	10/02/2020	SIXTH DRAFT		LA	SL	AF AF
P05	04/02/2020	FIFTH DRAFT		LA	SL	AF AF
P04	29/01/2020	FORTH DRAFT		LA	SL	AF AF
P03	03/12/2019	THIRD DRAFT		LA	SL	AF AF
P02	21/11/2019	SECOND DRAFT		LA	SL	AF AF
P01	28/10/2019	FIRST DRAFT		LA	SL	AF AF

Subsidiary	DCO SUBMISSION	Status	S2
------------	----------------	--------	----

PIINS Reference Number: TR010041/APP/6.6



Project Title: A1 in Northumberland Morpeth to Ellingham

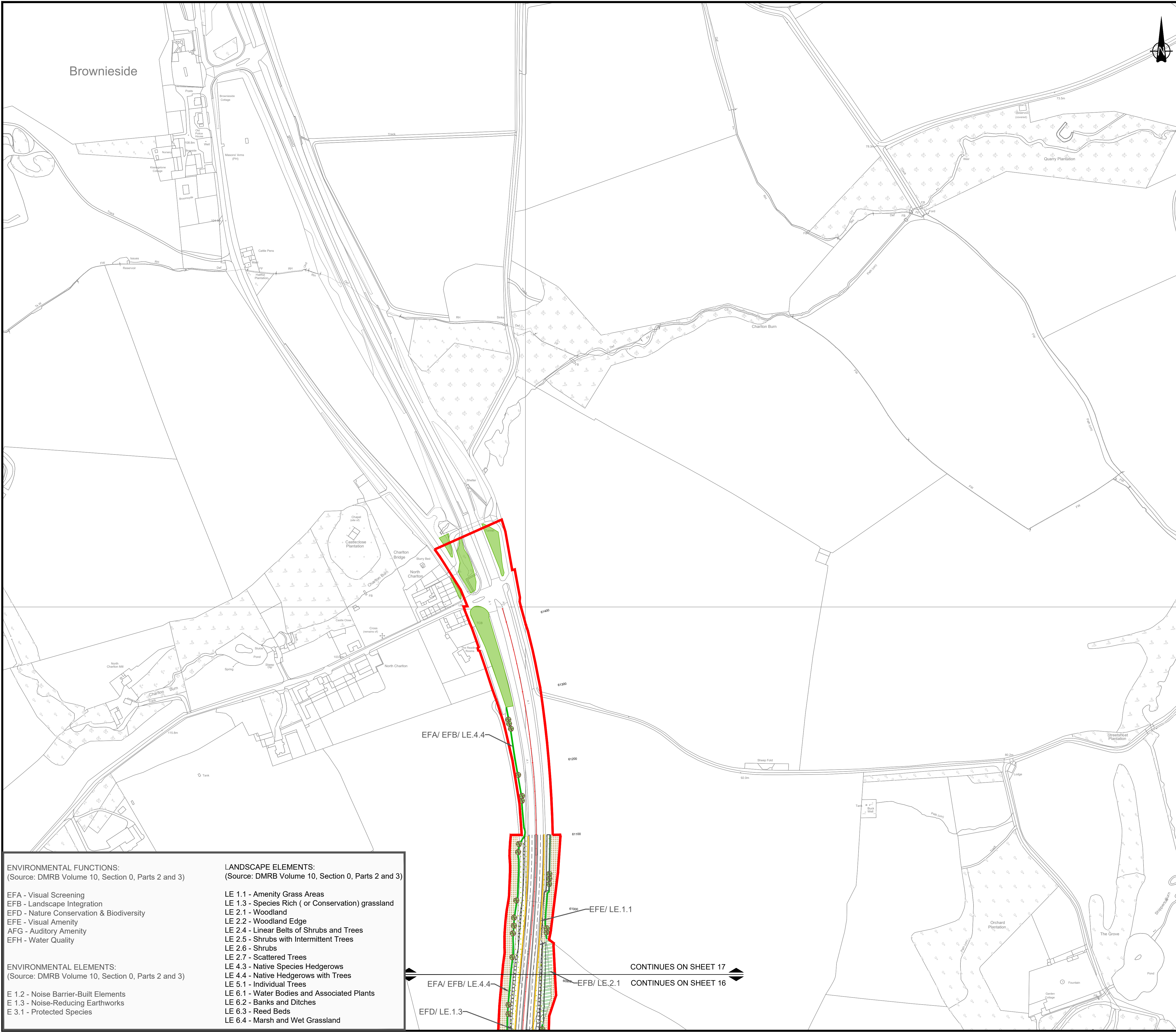
Drawing Title: Figure 7.10 Landscape Mitigation Plan
SHEET 6 OF 7






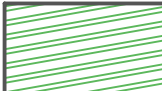
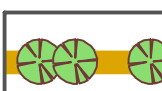





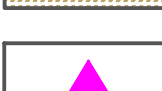
Scale	Drawn	Eng. Check	Approved	Authorised
1:2500	LA	SL	AF	AF
Original Size	Date	Date	Date	Date
A1	19/02/2020	19/02/2020	19/02/2020	19/02/2020

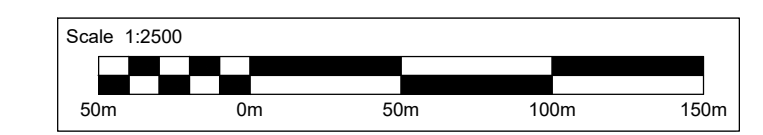
Drawing Number: HE551459-WSP-ELS-A2E-DR-LE-1816	Revision: P08
	PW Stage Code: 0

- ENVIRONMENTAL FUNCTIONS:**
(Source: DMRB Volume 10, Section 0, Parts 2 and 3)
- EFA - Visual Screening
 - EFB - Landscape Integration
 - EFD - Nature Conservation & Biodiversity
 - EFE - Visual Amenity
 - EFG - Auditory Amenity
 - EFH - Water Quality
- ENVIRONMENTAL ELEMENTS:**
(Source: DMRB Volume 10, Section 0, Parts 2 and 3)
- E 1.2 - Noise Barrier-Built Elements
 - E 1.3 - Noise-Reducing Earthworks
 - E 3.1 - Protected Species
- LANDSCAPE ELEMENTS:**
(Source: DMRB Volume 10, Section 0, Parts 2 and 3)
- LE 1.1 - Amenity Grass Areas
 - LE 1.3 - Species Rich (or Conservation) grassland
 - LE 2.1 - Woodland
 - LE 2.2 - Woodland Edge
 - LE 2.4 - Linear Belts of Shrubs and Trees
 - LE 2.5 - Shrubs with Intermittent Trees
 - LE 2.6 - Shrubs
 - LE 2.7 - Scattered Trees
 - LE 4.3 - Native Species Hedgerows
 - LE 4.4 - Native Hedgerows with Trees
 - LE 5.1 - Individual Trees
 - LE 6.1 - Water Bodies and Associated Plants
 - LE 6.2 - Banks and Ditches
 - LE 6.3 - Reed Beds
 - LE 6.4 - Marsh and Wet Grassland

\\uk.wspgroup.com\central_data\Projects\70038006 - A1 in Northumberland\02 WIP\LA Landscape\01 Modelling\landscape\New folder



-  Red Line Boundary
- Existing Vegetation**
-  Existing Habitats
-  Existing Hedgerow to be Retained
- Proposed Vegetation**
-  LE 1.1 Amenity Grass Areas
-  LE 1.3 Species Rich (or Conservation) Grassland
-  LE 2.1 and 2.2 Woodland Planting (Understorey to be seeded)
-  LE 2.4 Linear Belts of Shrubs and Trees
-  LE 2.6 Shrubs
-  LE 2.7 Scattered Trees
-  LE 4.4 Native Hedgerows with Trees
-  LE 6.1 Swale/ Marginal Planting/ Wetland (for Attenuation Pond)
-  Areas assumed to be return to agriculture
-  Ecological Mitigation: Indicative Bat Box Locations



Rev.	Date	Description	By	Eng' Chk	Disc' Chk	App'd
P08	JUNE 2020	EIGHT DRAFT		CM	VW	KS DM
P07	19/02/2020	SEVENTH DRAFT		LA	SL	AF AF
P06	10/02/2020	SIXTH DRAFT		LA	SL	AF AF
P05	04/02/2020	FIFTH DRAFT		LA	SL	AF AF
P04	29/01/2020	FORTH DRAFT		LA	SL	AF AF
P03	03/12/2019	THIRD DRAFT		LA	SL	AF AF
P02	21/11/2019	SECOND DRAFT		LA	SL	AF AF
P01	28/10/2019	FIRST DRAFT		LA	SL	AF AF

Subsidiary	DCO SUBMISSION	Status	S2
------------	----------------	--------	----

PINS Reference Number **TR010041/APP/6.6**



Project Title **A1 in Northumberland Morpeth to Ellingham**

Drawing Title **Figure 7.10 Landscape Mitigation Plan SHEET 7 OF 7**

Scale	Drawn	Eng. Check	Approved	Authorised
1:2500	LA	SL	AF	AF
Original Size	Date	Date	Date	Date
A1	19/02/2020	19/02/2020	19/02/2020	19/02/2020

Drawing Number	HE551459-WSP-ELS-A2E-DR-LE-1816	Revision	P08
		PW Stage Code	0

- ENVIRONMENTAL FUNCTIONS:**
(Source: DMRB Volume 10, Section 0, Parts 2 and 3)
- EFA - Visual Screening
 - EFB - Landscape Integration
 - EFD - Nature Conservation & Biodiversity
 - EFE - Visual Amenity
 - AFG - Auditory Amenity
 - EFH - Water Quality
- ENVIRONMENTAL ELEMENTS:**
(Source: DMRB Volume 10, Section 0, Parts 2 and 3)
- E 1.2 - Noise Barrier-Built Elements
 - E 1.3 - Noise-Reducing Earthworks
 - E 3.1 - Protected Species
- LANDSCAPE ELEMENTS:**
(Source: DMRB Volume 10, Section 0, Parts 2 and 3)
- LE 1.1 - Amenity Grass Areas
 - LE 1.3 - Species Rich (or Conservation) grassland
 - LE 2.1 - Woodland
 - LE 2.2 - Woodland Edge
 - LE 2.4 - Linear Belts of Shrubs and Trees
 - LE 2.5 - Shrubs with Intermittent Trees
 - LE 2.6 - Shrubs
 - LE 2.7 - Scattered Trees
 - LE 4.3 - Native Species Hedgerows
 - LE 4.4 - Native Hedgerows with Trees
 - LE 5.1 - Individual Trees
 - LE 6.1 - Water Bodies and Associated Plants
 - LE 6.2 - Banks and Ditches
 - LE 6.3 - Reed Beds
 - LE 6.4 - Marsh and Wet Grassland

CONTINUES ON SHEET 17

CONTINUES ON SHEET 16

EFA/EFB/LE.4.4

EFE/LE.1.1

EFA/EFB/LE.4.4

EFD/LE.1.3

EFB/LE.2.1

\\uk.wspgroup.com\central\data\Projects\70038006 - A1 in Northumberland\02 WIP\LA Landscape\01 Model\landscape\New folder

© Crown copyright 2020.

You may re-use this information (not including logos) free of charge in any format or medium, under the terms of the Open Government Licence. To view this licence:

visit www.nationalarchives.gov.uk/doc/open-government-licence/

write to the **Information Policy Team, The National Archives,**

Kew, London TW9 4DU, or email

psi@nationalarchives.gsi.gov.uk.

This document is also available on our website at www.gov.uk/highways

If you have any enquiries about this document A1inNorthumberland@highwaysengland.co.uk or call **0300 470 4580***.

*Calls to 03 numbers cost no more than a national rate call to an 01 or 02 number and must count towards any inclusive minutes in the same way as 01 and 02 calls.

These rules apply to calls from any type of line including mobile, BT, other fixed line or payphone. Calls may be recorded or monitored.

Registered office Bridge House, 1 Walnut Tree Close, Guildford GU1 4LZ

Highways England Company Limited registered in England and Wales number 09346363