

A1 in Northumberland: Morpeth to Ellingham

Scheme Number: TR010041

6.5 Environmental Statement – Figure 10.2 River Coquet Bridge As-Built Drawing

Part A

APFP Regulation 5(2)(a)

Planning Act 2008

Infrastructure Planning (Applications: Prescribed
Forms and Procedure) Regulations 2009

June 2020

Infrastructure Planning

Planning Act 2008

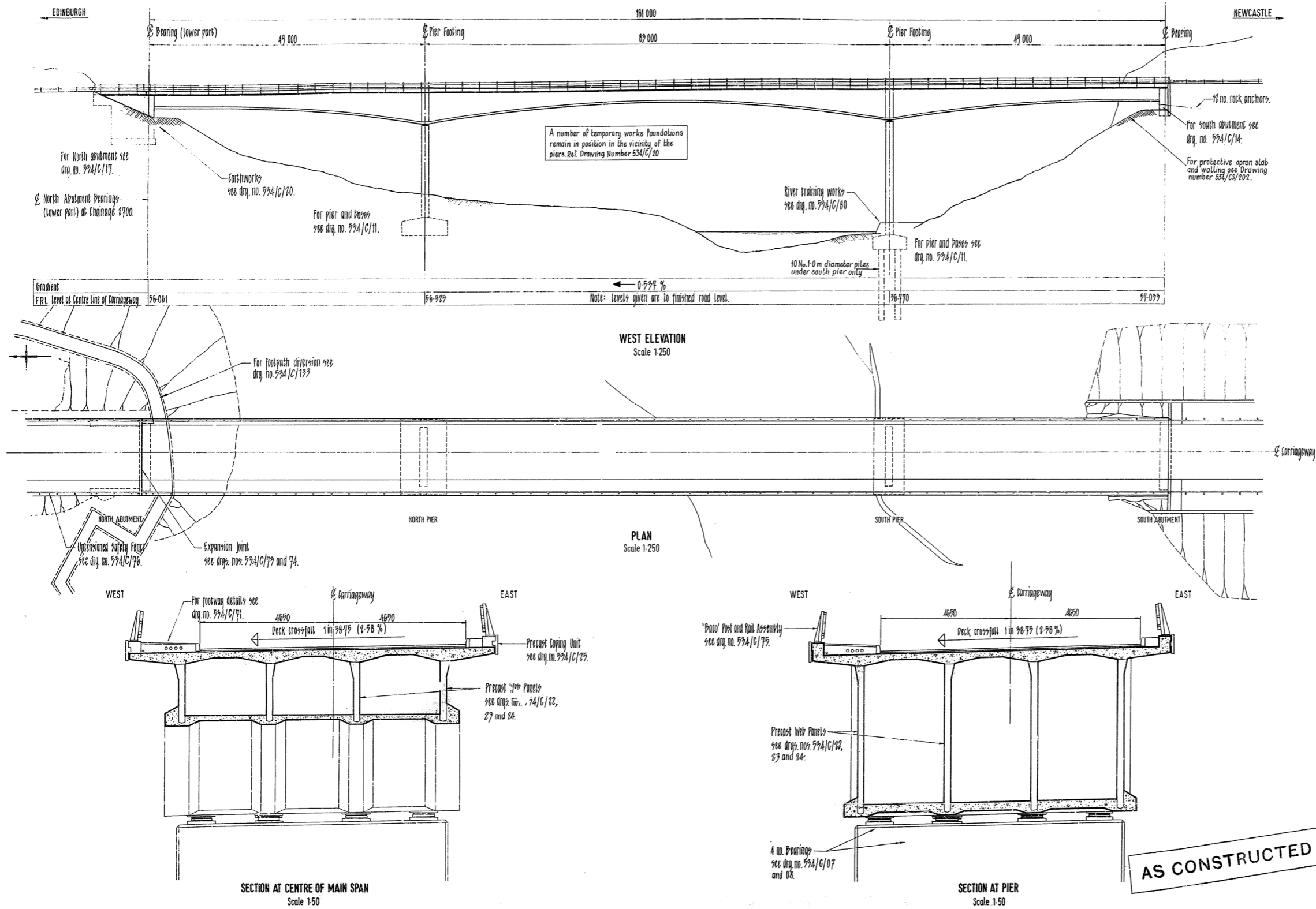
**The Infrastructure Planning
(Applications: Prescribed Forms and
Procedure) Regulations 2009**

**The A1 in Northumberland: Morpeth to Ellingham
Development Consent Order 20[xx]**

Environmental Statement - Figures

Regulation Reference:	APFP Regulation 5(2)(a)
Planning Inspectorate Scheme Reference	TR010041
Application Document Reference	TR010041/APP/6.5
Author:	A1 in Northumberland: Morpeth to Ellingham Project Team, Highways England

Version	Date	Status of Version
Rev 0	June 2020	Application Issue



Rev	Date	Description	By	Chk'd	App'd
P02	June 2020	Second Issue	GH	SM	NM
P01	12/07/19	First Issue	GH	SM	NM



Project Title
A1 in Northumberland: Morpeth to Ellingham

Drawing Title
Figure 10.2 River Coquet Bridge As-Built Drawing

Scale	Drawn	Checked	Approved	Authorised
N/A	GH	SH	NM	DM
Original Size	Date	Date	Date	Date
A3W	12/07/19	12/07/19	12/07/19	12/07/19
Drawing Status				Suitability
For Information				S1
Drawing Number			Project Ref. No.	
HE551459			70044136	
Project			Revision	
M2F			P02	
Originator	Volume	Type	Role	Number
WSP	6.5	RP	LE	1942

© Crown copyright 2020.

You may re-use this information (not including logos) free of charge in any format or medium, under the terms of the Open Government Licence. To view this licence:

visit www.nationalarchives.gov.uk/doc/open-government-licence/

write to the Information Policy Team, The National Archives,

Kew, London TW9 4DU, or email

psi@nationalarchives.gsi.gov.uk.

This document is also available on our website at www.gov.uk/highways

If you have any enquiries about this document A1inNorthumberland@highwaysengland.co.uk or call 0300 470 4580*.

*Calls to 03 numbers cost no more than a national rate call to an 01 or 02 number and must count towards any inclusive minutes in the same way as 01 and 02 calls.

These rules apply to calls from any type of line including mobile, BT, other fixed line or payphone. Calls may be recorded or monitored.

Registered office Bridge House, 1 Walnut Tree Close, Guildford GU1 4LZ

Highways England Company Limited registered in England and Wales number 09346363