

A57 Link Roads

TR010034

9.64 Environmental Masterplan overview

Rule 8(1)(k)

Planning Act 2008

Infrastructure Planning (Examination Procedure) Rules 2010

March 2022

Infrastructure Planning

Planning Act 2008

The Infrastructure Planning (Examination Procedure) Rules 2010

A57 Link Roads Development Consent Order 202[x]

9.64 Environmental Masterplan overview

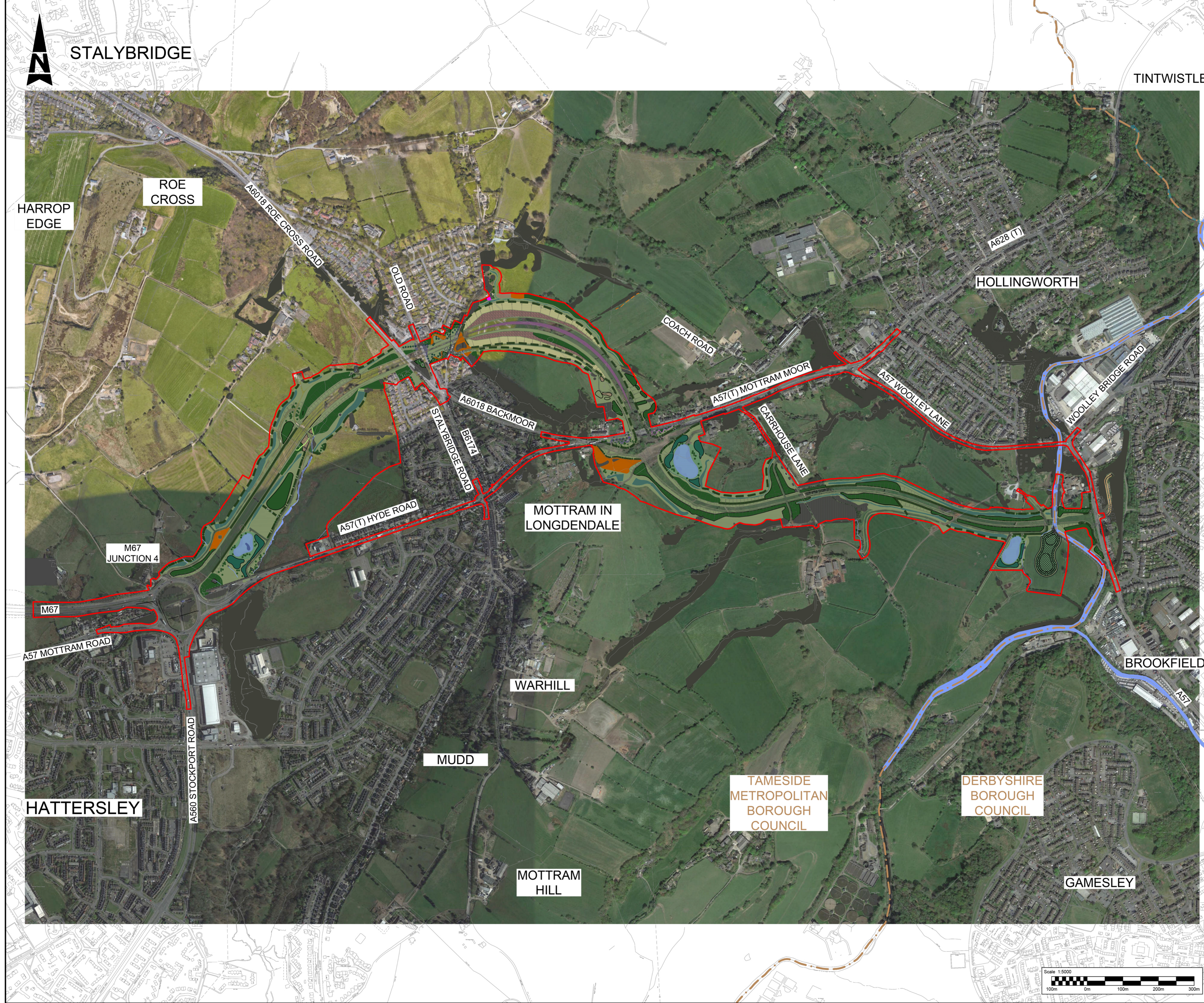
Rule Number:	Rule 8(k)
Planning Inspectorate Scheme Reference	TR010034
Application Document Reference	TR010034/EXAM/9.64
Author:	A57 Link Roads Project Team, National Highways and Atkins

Version	Date	Status of Version
1	March 2022	Deadline 6

1. Introduction

- 1.1.1. This document contains a figure illustrating the environmental masterplan in response to the Examining Authority's Second Written Question 5.5 part a (PD-012).

DO NOT SCALE



LEGEND

- DCO BOUNDARY
- LOCAL AUTHORITY BOUNDARY

This map is based on Ordnance Survey material with the permission of Ordnance Survey on behalf of the Controller of Her Majesty's Stationery Office. © Crown copyright. Unauthorised reproduction infringes Crown copyright and may lead to prosecution or civil proceedings. Highways England 100030649, 2021.

Description	Status	Revision	Issue Date
Description	Status	Revision	Issue Date
Description	Status	Revision	Issue Date
Description	Status	Revision	Issue Date
Description	Status	Revision	Issue Date
DCO APPLICATION	A4	P01	16/03/22
Drawing Suitability	DCO APPLICATION		Status A4
Client			
Scheme Name	A57 LINK ROADS		
Drawing Title	FIGURE 9.64 ENVIRONMENTAL MASTERPLAN OVERVIEW SHEET 1 OF 1		
PINS Ref. No.	TR010034/EXAM/9.64		
Drawing Number	HE551473	Originator	BBA
Scheme	A57_AL_SCHEME	Volume	ELS
Location	DR	Role	LL
Scale	1:5000 @ A1	Original Size	A1
		Number	060200
		Rev	P01

© Crown copyright (2022).

You may re-use this information (not including logos) free of charge in any format or medium, under the terms of the Open Government Licence. To view this licence:

visit

write to the Information Policy Team, The National Archives, Kew, London TW9 4DU,
or email psi@nationalarchives.gsi.gov.uk.

Printed on paper from well-managed forests and other controlled sources.

Registered office Bridge House, 1 Walnut Tree Close, Guildford GU1 4LZ
National Highways Limited registered in England and Wales number 09346363