

Lower Thames Crossing

6.2 Environmental Statement Figures

Figure 6.6 - Representative Viewpoints - Summer View Heritage Viewpoint (1 of 2)

(Clean Version)

APFP Regulation 5(2)(a)

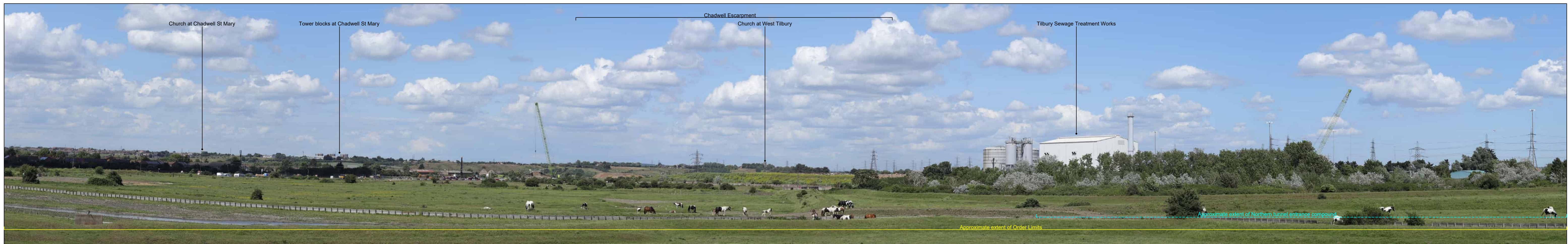
Infrastructure Planning (Applications:
Prescribed Forms and Procedure)
Regulations 2009

Volume 6

DATE: July 2023
DEADLINE: 1

Planning Inspectorate Scheme Ref: TR010032
Application Document Ref: TR010032/APP/6.2

VERSION: 2.0



P02	S9	12/07/2023	Deadline 1	BB	DL	CD
P01	S8	12/09/2022	First Issued	BB	DL	CD
Rev	Status	Rev. Date	Purpose of revision	Drawn	Chck'd	Apprv'd

For location see Figure 7.16 - Visual Effects Drawing with Representative Viewpoint Locations

Upper Viewpoint (Summer): N-(CH)01
 Date and Time: 03/07/2019 06:42

Camera: Canon EOS 6D MkII
 Lens: Canon EF 50mm f/1.8 STM
 Equipment: Manfrotto MA 454 Micro Positioning Plate
 Manfrotto SBH-100 Ball Head

FL, Max Aperture: 50mm, 1.75
 Tripod Height: 1.5m
 Viewpoint Ground Height: 16.5m AOD
 Viewpoint Grid Reference: 565170E, 175462N

Lower Viewpoint (Summer): N-(CH)02
 Date and Time: 03/07/2019 06:50

FL, Max Aperture: 50mm, 1.75
 Tripod Height: 1.5m
 Viewpoint Ground Height: 24.3m AOD
 Viewpoint Grid Reference: 565079E, 175400N

Distance to Order Limits: 590m
 View Direction (Centre of View): ENE
 GPS Accuracy: 5m



LOWER THAMES CROSSING
 5th Floor Beaufort House
 15 St Botolph Street
 London EC3A 7DT

Project: LOWER THAMES CROSSING
 Drawing title: Figure 6.6
 Representative Viewpoints - Summer View
 Heritage Viewpoint N-(CH)01 & N-(CH)02
 Sheet 1 of 2

Drawn	BB	Date - 12/09/2022	Status	Revision
Checked	DL	Date - 12/09/2022	PINS SUBMISSION	P02
Approved	CD	Date - 12/09/2022	Application Document No. TR010032/APP/6.2	
Drawing number		HE540039-CJV-ELS-SZP_ZZ000000_Z-DR-LV-00196		



P02	S9	12/07/2023	Deadline 1	BB	DL	CD
P01	S8	12/09/2022	First Issued	BB	DL	CD
Rev	Status	Rev. Date	Purpose of revision	Drawn	Chck'd	Apprv'd

For location see Figure 7.16 - Visual Effects Drawing with Representative Viewpoint Locations

Camera: Canon EOS 6D MkII
 Lens: Canon EF 50mm f/1.8 STM
 Equipment: Manfrotto MA 454 Micro Positioning Plate
 Manfrotto SBH-100 Ball Head

Upper Viewpoint (Summer): N-(CH)01
 Date and Time: 03/07/2019 06:42

FL, Max Aperture: 50mm, 1.75
 Tripod Height: 1.5m
 Viewpoint Ground Height: 16.5m AOD
 Viewpoint Grid Reference: 565170E, 175462N

Lower Viewpoint (Summer): N-(CH)02
 Date and Time: 03/07/2019 06:50

FL, Max Aperture: 50mm, 1.75
 Tripod Height: 1.5m
 Viewpoint Ground Height: 24.3m AOD
 Viewpoint Grid Reference: 565079E, 175400N

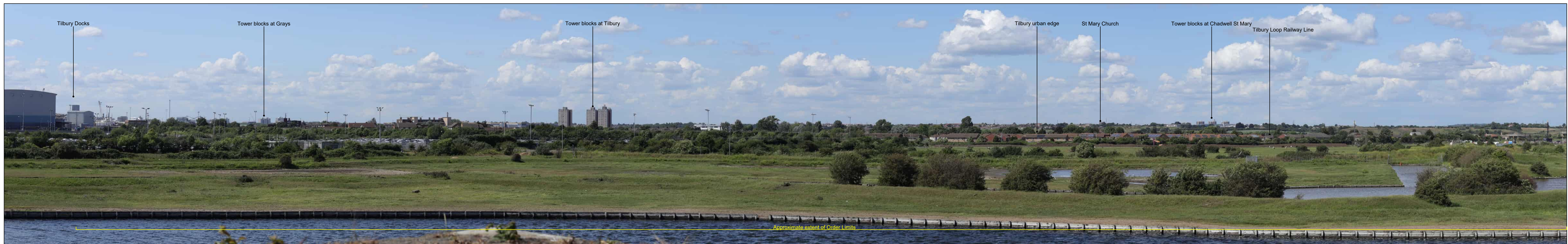
Client

LOWER THAMES CROSSING
 5th Floor Beaufort House
 15 St Botolph Street
 London EC3A 7DT

Project
 LOWER THAMES CROSSING

Drawing title
 Figure 6.6
 Representative Viewpoints - Summer View
 Heritage Viewpoint N-(CH)01 & N-(CH)02
 Sheet 2 of 2

Drawn	BB	Date - 12/09/2022	Status	Revision
Checked	DL	Date - 12/09/2022	PINS SUBMISSION	P02
Approved	CD	Date - 12/09/2022	Application Document No. TR010032/APP/6.2	
Drawing number		HE540039-CJV-ELS-SZP_ZZ000000_Z-DR-LV-00197		



P02	S9	12/07/2023	Deadline 1	BB	DL	CD
P01	S8	12/09/2022	First Issued	BB	DL	CD
Rev	Status	Rev. Date	Purpose of revision	Drawn	Chck'd	Apprv'd

For location see Figure 7.16 - Visual Effects Drawing with Representative Viewpoint Locations

Upper Viewpoint (Summer): N-(CH)03
Date and Time: 03/07/2019 07:01

Camera: Canon EOS 6D MkII
Lens: Canon EF 50mm f/1.8 STM
Equipment: Manfrotto MA 454 Micro Positioning Plate
Manfrotto SBH-100 Ball Head

FL, Max Aperture: 50mm, 1.75
Tripod Height: 1.5m
Viewpoint Ground Height: 38.1m AOD
Viewpoint Grid Reference: 564974E, 175441N

Distance to Order Limits: 490m
View Direction: N
GPS Accuracy: 5m

Lower Viewpoint (Summer): N-(CH)04
Date and Time: 03/07/2019 07:12

FL, Max Aperture: 50mm, 1.75
Tripod Height: 1.5m
Viewpoint Ground Height: 51.4m AOD
Viewpoint Grid Reference: 564857E, 175219N

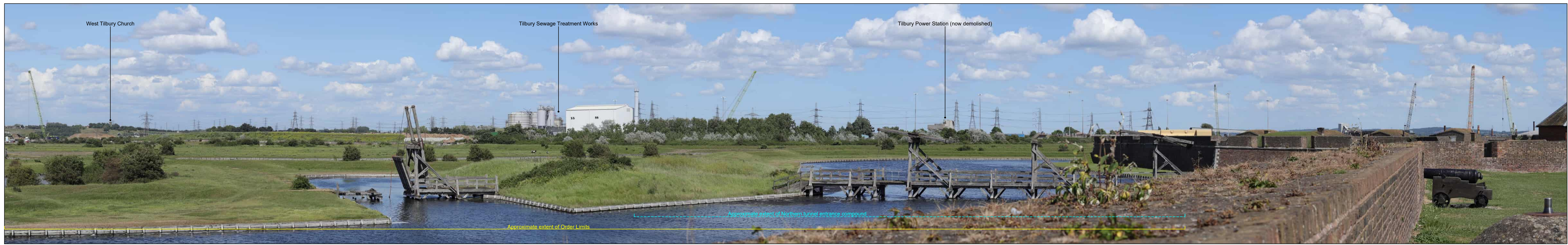
Distance to Order Limits: 620m
View Direction: NNE
GPS Accuracy: 5m



LOWER THAMES CROSSING
5th Floor Beaufort House
15 St Botolph Street
London EC3A 7DT

Project: LOWER THAMES CROSSING
Drawing title: Figure 6.6
Representative Viewpoints - Summer View
Heritage Viewpoint N-(CH)03 & N-(CH)04
Sheet 1 of 2

Drawn	BB	Date - 12/09/2022	Status	Revision
Checked	DL	Date - 12/09/2022	PINS SUBMISSION	P02
Approved	CD	Date - 12/09/2022	Application Document No. TR010032/APP/6.2	
Drawing number		HE540039-CJV-ELS-SZP_ZZ000000_Z-DR-LV-00198		



P02	S9	12/07/2023	Deadline 1	BB	DL	CD
P01	S8	12/09/2022	First Issued	BB	DL	CD
Rev	Status	Rev. Date	Purpose of revision	Drawn	Chck'd	Apprv'd

For location see Figure 7.16 - Visual Effects Drawing with Representative Viewpoint Locations

Upper Viewpoint (Summer): N-(CH)03
Date and Time: 03/07/2019 07:12

Camera: Canon EOS 6D MkII
Lens: Canon EF 50mm f/1.8 STM
Equipment: Manfrotto MA 454 Micro Positioning Plate
Manfrotto SBH-100 Ball Head

FL, Max Aperture: 50mm, 1.75
Tripod Height: 1.5m
Viewpoint Ground Height: 38.1m AOD
Viewpoint Grid Reference: 564974E, 175441N

Distance to Order Limits: 490m
View Direction (Centre of View): N
GPS Accuracy: 5m

Lower Viewpoint (Summer): N-(CH)04
Date and Time: 03/07/2019 07:12

FL, Max Aperture: 50mm, 1.75
Tripod Height: 1.5m
Viewpoint Ground Height: 51.4m AOD
Viewpoint Grid Reference: 564857E, 175219N

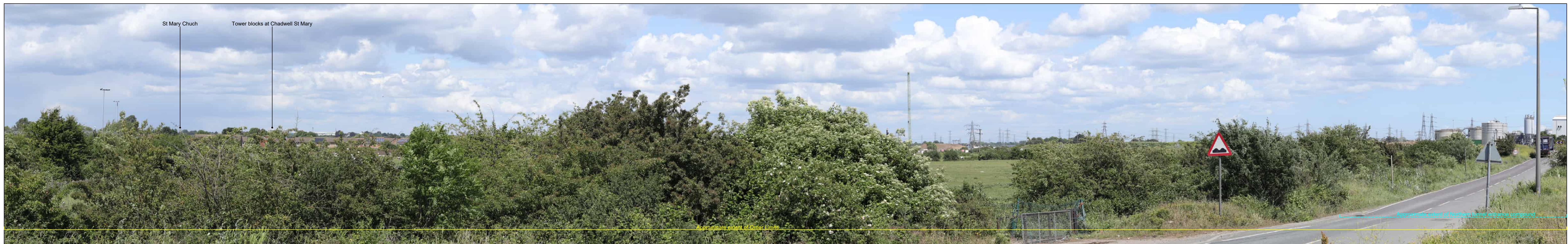
Distance to Order Limits: 620m
View Direction (Centre of View): NNE
GPS Accuracy: 5m



LOWER THAMES CROSSING
5th Floor Beaufort House
15 St Botolph Street
London EC3A 7DT

Project: LOWER THAMES CROSSING
Drawing title: Figure 6.6
Representative Viewpoints - Summer View
Heritage Viewpoint N-(CH)03 & N-(CH)04
Sheet 2 of 2

Drawn	BB	Date - 12/09/2022	Status	Revision
Checked	DL	Date - 12/09/2022	PINS SUBMISSION	P02
Approved	CD	Date - 12/09/2022	Application Document No. TR010032/APP/6.2	
Drawing number		HE540039-CJV-ELS-SZP_ZZ000000_Z-DR-LV-00199		



P02	S9	12/07/2023	Deadline 1	BB	DL	CD
P01	S8	12/09/2022	First Issued	BB	DL	CD
Rev	Status	Rev. Date	Purpose of revision	Drawn	Chck'd	Apprv'd

For location see Figure 7.16 - Visual Effects Drawing with Representative Viewpoint Locations

Upper Viewpoint (Summer): N-(CH)05
 Date and Time: 03/07/2019 05:44

Camera: Canon EOS 6D MkII
 Lens: Canon EF 50mm f/1.8 STM
 Equipment: Manfrotto MA 454 Micro Positioning Plate
 Manfrotto SBH-100 Ball Head

FL, Max Aperture: 50mm, 1.75
 Tripod Height: 1.65m
 Viewpoint Ground Height: 7.9m AOD
 Viewpoint Grid Reference: 564832E, 175633N

Lower Viewpoint (Summer): N-(CH)06
 Date and Time: 03/07/2019 06:01

FL, Max Aperture: 50mm, 1.75
 Tripod Height: 1.5m
 Viewpoint Ground Height: 13.2m AOD
 Viewpoint Grid Reference: 565082E, 175630N

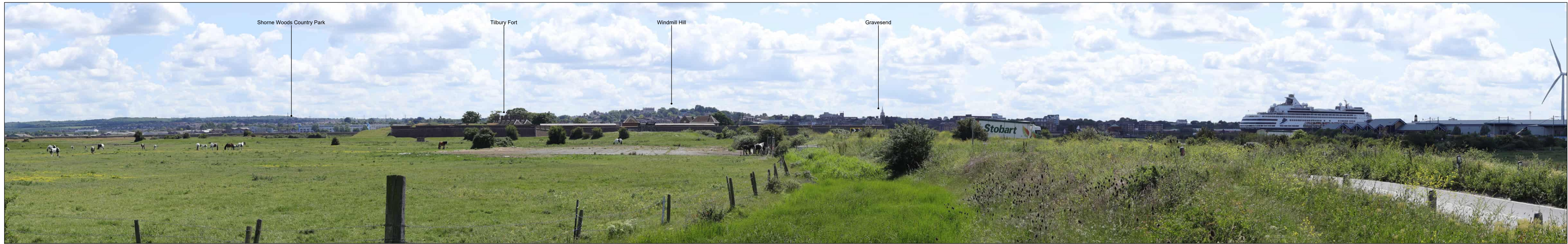
Distance to Order Limits: 255m
 View Direction (Centre of View): ENE
 GPS Accuracy: 5m



LOWER THAMES CROSSING
 5th Floor Beaufort House
 15 St Botolph Street
 London EC3A 7DT

Project: LOWER THAMES CROSSING
 Drawing title: Figure 6.6
 Representative Viewpoints - Summer View
 Heritage Viewpoint N-(CH)05 & N-(CH)06
 Sheet 1 of 2

Drawn	BB	Date - 12/09/2022	Status	Revision
Checked	DL	Date - 12/09/2022	PINS SUBMISSION	P02
Approved	CD	Date - 12/09/2022	Application Document No. TR010032/APP/6.2	
Drawing number		HE540039-CJV-ELS-SZP_ZZ000000_Z-DR-LV-00200		



P02	S9	12/07/2023	Deadline 1	BB	DL	CD
P01	S8	12/09/2022	First Issued	BB	DL	CD
Rev	Status	Rev. Date	Purpose of revision	Drawn	Chck'd	Appr'd

For location see Figure 7.16 - Visual Effects Drawing with Representative Viewpoint Locations

Upper Viewpoint (Summer): N-(CH)05
 Date and Time: 03/07/2019 05:44

Camera: Canon EOS 6D MkII
 Lens: Canon EF 50mm f/1.8 STM
 Equipment: Manfrotto MA 454 Micro Positioning Plate
 Manfrotto SBH-100 Ball Head

FL, Max Aperture: 50mm, 1.75
 Tripod Height: 1.65m
 Viewpoint Ground Height: 7.9m AOD
 Viewpoint Grid Reference: 564832E, 175633N

Distance to Order Limits: 255m
 View Direction (Centre of View): ENE
 GPS Accuracy: 5m

Lower Viewpoint (Summer): N-(CH)06
 Date and Time: 03/07/2019 06:01

FL, Max Aperture: 50mm, 1.75
 Tripod Height: 1.5m
 Viewpoint Ground Height: 13.2m AOD
 Viewpoint Grid Reference: 565082E, 175660N

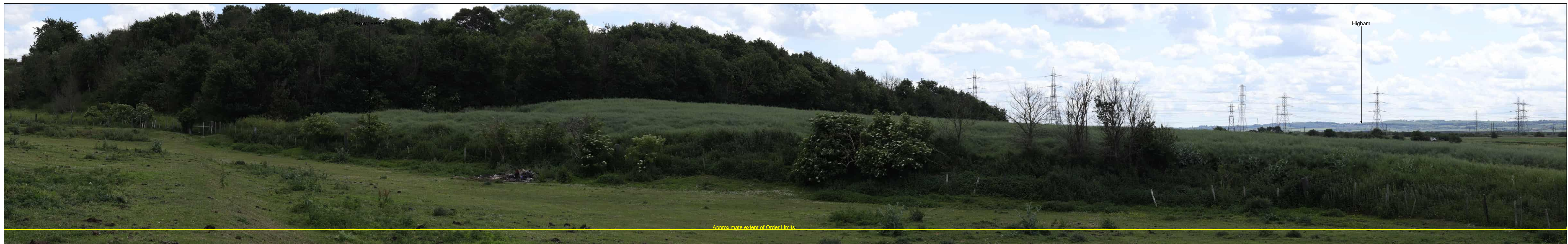
Distance to Order Limits: 215m
 View Direction (Centre of View): SE
 GPS Accuracy: 5m



LOWER THAMES CROSSING
 5th Floor Beaufort House
 15 St Botolph Street
 London EC3A 7DT

Project: LOWER THAMES CROSSING
 Drawing title: Figure 6.6
 Representative Viewpoints - Summer View
 Heritage Viewpoint N-(CH)05 & N-(CH)06
 Sheet 2 of 2

Drawn	BB	Date - 12/09/2022	Status	Revision
Checked	DL	Date - 12/09/2022	PINS SUBMISSION	P02
Approved	CD	Date - 12/09/2022	Application Document No. TR010032/APP/6.2	
Drawing number		HE540039-CJV-ELS-SZP_ZZ000000_Z-DR-LV-00201		



P02	S9	12/07/2023	Deadline 1	BB	DL	CD
P01	S8	12/09/2022	First Issued	BB	DL	CD
Rev	Status	Rev. Date	Purpose of revision	Drawn	Chck'd	Apprv'd

For location see Figure 7.16 - Visual Effects Drawing with Representative Viewpoint Locations

Upper Viewpoint (Summer): N-(CH)07
 Date and Time: 06/06/2019 12:21

Camera: Canon EOS 6D MkII
 Lens: Canon EF 50mm f/1.8 STM
 Equipment: Manfrotto MA 454 Micro Positioning Plate
 Manfrotto SBH-100 Ball Head

FL, Max Aperture: 50mm, 1.75
 Tripod Height: 1.5m
 Viewpoint Ground Height: 0.1m AOD
 Viewpoint Grid Reference: 565826E, 177715N

Distance to Order Limits: 30m
 View Direction (Centre of View): SSW
 GPS Accuracy: 5m

Lower Viewpoint (Winter): N-(CH)08
 Date and Time: 18/02/2019 13:58

FL, Max Aperture: 50mm, 1.75
 Tripod Height: 1.5m
 Viewpoint Ground Height: 6.1m AOD
 Viewpoint Grid Reference: 567740E, 177034N

Distance to Order Limits: 0m
 View Direction (Centre of View): W
 GPS Accuracy: 5m



Client

LOWER THAMES CROSSING
 5th Floor Beaufort House
 15 St Botolph Street
 London EC3A 7DT

Project LOWER THAMES CROSSING

Drawing title Figure 6.6
 Representative Viewpoints - Summer & Winter View
 Heritage Viewpoint N-(CH)07 & N-(CH)08
 Sheet 1 of 2

Drawn	BB	Date - 12/09/2022	Status	Revision
Checked	DL	Date - 12/09/2022	PINS SUBMISSION	P02
Approved	CD	Date - 12/09/2022	Application Document No. TR010032/APP/6.2	
Drawing number		HE540039-CJV-ELS-SZP_ZZ000000_Z-DR-LV-00202		



PHOTO FRAME INTENTIONALLY BLANK

P02	S9	12/07/2023	Deadline 1	BB	DL	CD
P01	S8	12/09/2022	First Issued	BB	DL	CD
Rev	Status	Rev. Date	Purpose of revision	Drawn	Chck'd	Apprv'd

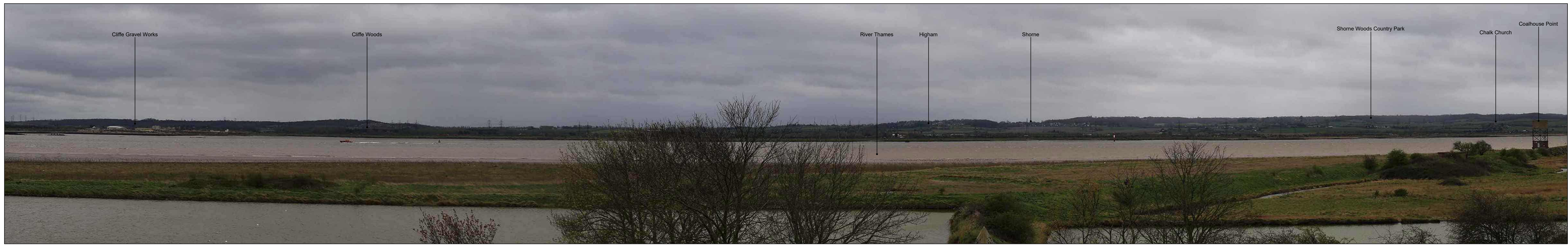
For location see Figure 7.16 - Visual Effects Drawing with Representative Viewpoint Locations			Upper Viewpoint (Summer): N-(CH)07 Date and Time: 06/06/2019 12:21		
Camera:	Canon EOS 6D MkII	FL, Max Aperture:	50mm, 1.75	Distance to Order Limits:	30m
Lens:	Canon EF 50mm f/1.8 STM	Tripod Height:	1.5m	View Direction	(Centre of View): SSW
Equipment:	Manfrotto MA 454 Micro Positioning Plate	Viewpoint Ground Height:	0.1m AOD	GPS Accuracy:	5m
	Manfrotto SBH-100 Ball Head	Viewpoint Grid Reference:	565826E, 177715N		



LOWER THAMES CROSSING
5th Floor Beaufort House
15 St Botolph Street
London EC3A 7DT

Project	LOWER THAMES CROSSING
Drawing title	Figure 6.6 Representative Viewpoints - Summer View Heritage Viewpoint N-(CH)07 & N-(CH)08 Sheet 2 of 2

Drawn	BB	Date - 12/09/2022	Status	PINS SUBMISSION	Revision	P02
Checked	DL	Date - 12/09/2022	Application Document No. TR010032/APP/6.2			
Approved	CD	Date - 12/09/2022	Drawing number			
HE540039-CJV-ELS-SZP_ZZ000000_Z-DR-LV-00203						



P02	S9	12/07/2023	Deadline 1	BB	DL	CD
P01	S8	12/09/2022	First Issued	BB	DL	CD
Rev	Status	Rev. Date	Purpose of revision	Drawn	Chck'd	Apprv'd

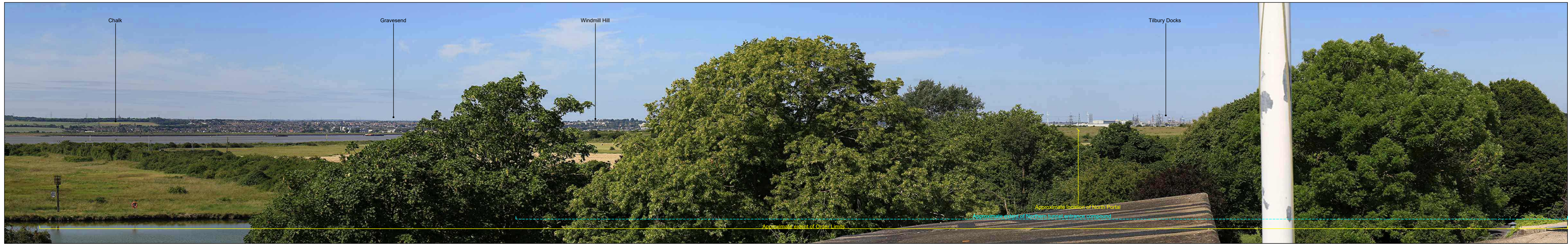
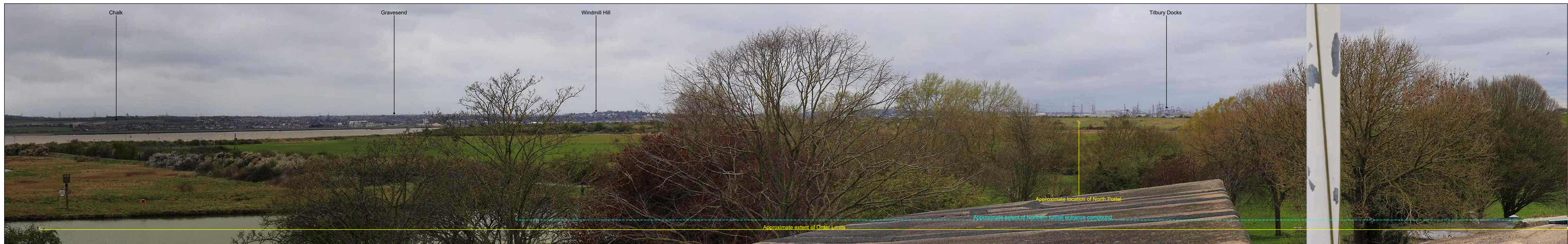
For location see Figure 7.16 - Visual Effects Drawing with Representative Viewpoint Locations		Upper Viewpoint (Winter): N-(CH)09 Date and Time: 06/04/2022 12:24		Lower Viewpoint (Summer): N-(CH)09 Date and Time: 14/06/2022 08:24	
Camera:	Canon EOS 6D MkII	FL, Max Aperture:	50mm, 1.75	Distance to Order Limits:	185m
Lens:	Canon EF 50mm f/1.8 STM	Tripod Height:	1.5m	View Direction:	SSW
Equipment:	Manfrotto MA 454 Micro Positioning Plate	Viewpoint Ground Height:	17.4m AOD	(Centre of View):	SSW
	Manfrotto SBH-100 Ball Head	Viewpoint Grid Reference:	569093E, 176768N	GPS Accuracy:	5m



LOWER THAMES CROSSING
5th Floor Beaufort House
15 St Botolph Street
London EC3A 7DT

Project: LOWER THAMES CROSSING
Drawing title: Figure 6.6
Representative Viewpoints - Winter and Summer View
Heritage Viewpoint N-(CH)09
Sheet 1 of 3

Drawn	BB	Date - 12/09/2022	Status	Revision
Checked	DL	Date - 12/09/2022	PINS SUBMISSION	P02
Approved	CD	Date - 12/09/2022	Application Document No. TR010032/APP/6.2	
Drawing number		HE540039-CJV-ELS-SZP_ZZ000000_Z-DR-LV-00204		



P02	S9	12/07/2023	Deadline 1	BB	DL	CD
P01	S8	12/09/2022	First Issued	BB	DL	CD
Rev	Status	Rev. Date	Purpose of revision	Drawn	Chck'd	Apprv'd

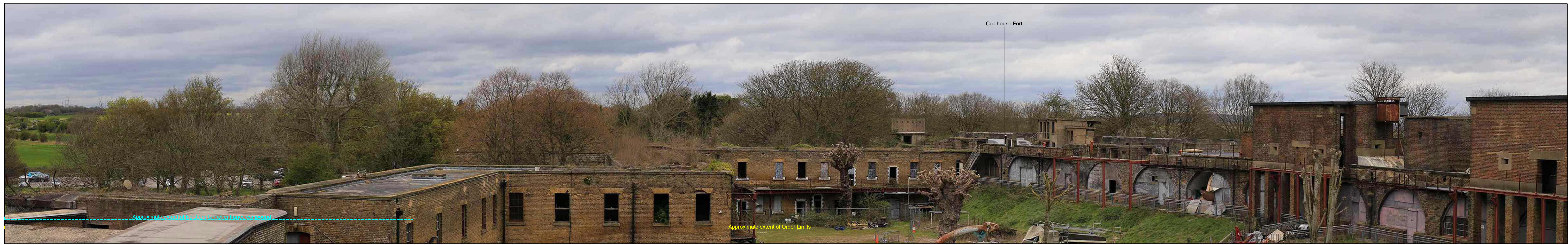
For location see Figure 7.16 - Visual Effects Drawing with Representative Viewpoint Locations		Upper Viewpoint (Winter): N-(CH)09 Date and Time: 06/04/2022 12:40		Lower Viewpoint (Summer): N-(CH)09 Date and Time: 14/06/2022 08:24	
Camera:	Canon EOS 6D MkII	FL, Max Aperture:	50mm, 1.75	Distance to Order Limits:	185m
Lens:	Canon EF 50mm f/1.8 STM	Tripod Height:	1.5m	View Direction:	SSW
Equipment:	Manfrotto MA 454 Micro Positioning Plate	Viewpoint Ground Height:	17.4m AOD	(Centre of View):	SSW
	Manfrotto SBH-100 Ball Head	Viewpoint Grid Reference:	569093E, 176768N	GPS Accuracy:	5m



LOWER THAMES CROSSING
5th Floor Beaufort House
15 St Botolph Street
London EC3A 7DT

Project: LOWER THAMES CROSSING
Drawing title: Figure 6.6
Representative Viewpoints - Winter and Summer View
Heritage Viewpoint N-(CH)09
Sheet 2 of 3

Drawn	BB	Date - 12/09/2022	Status	Revision
Checked	DL	Date - 12/09/2022	PINS SUBMISSION	P02
Approved	CD	Date - 12/09/2022	Application Document No. TR010032/APP/6.2	
Drawing number		HE540039-CJV-ELS-SZP_ZZ000000_Z-DR-LV-00205		



P02	S9	12/07/2023	Deadline 1	BB	DL	CD
P01	S8	12/09/2022	First Issued	BB	DL	CD
Rev	Status	Rev. Date	Purpose of revision	Drawn	Chck'd	Apprv'd

For location see Figure 7.16 - Visual Effects Drawing with Representative Viewpoint Locations

Upper Viewpoint (Winter): N-(CH)09
Date and Time: 06/04/2022 12:40

Camera: Canon EOS 6D MkII
Lens: Canon EF 50mm f/1.8 STM
Equipment: Manfrotto MA 454 Micro Positioning Plate
Manfrotto SBH-100 Ball Head

FL, Max Aperture: 50mm, 1.75
Tripod Height: 1.5m
Viewpoint Ground Height: 17.4m AOD
Viewpoint Grid Reference: 569093E, 176768N

Distance to Order Limits: 185m
View Direction (Centre of View): SSW
GPS Accuracy: 5m

Lower Viewpoint (Summer): N-(CH)09
Date and Time: 14/06/2022 08:24

FL, Max Aperture: 50mm, 1.75
Tripod Height: 1.5m
Viewpoint Ground Height: 17.4m AOD
Viewpoint Grid Reference: 569093E, 176768N

Distance to Order Limits: 185m
View Direction (Centre of View): SSW
GPS Accuracy: 5m



Client
LOWER THAMES CROSSING
5th Floor Beaufort House
15 St Botolph Street
London EC3A 7DT

Project
LOWER THAMES CROSSING
Drawing title: Figure 6.6
Representative Viewpoints - Winter and Summer View
Heritage Viewpoint N-(CH)09
Sheet 3 of 3

Drawn	BB	Date - 12/09/2022	Status	Revision
Checked	DL	Date - 12/09/2022	PINS SUBMISSION	P02
Approved	CD	Date - 12/09/2022	Application Document No. TR010032/APP/6.2	
Drawing number		HE540039-CJV-ELS-SZP_ZZ000000_Z-DR-LV-00206		



P02	S9	12/07/2023	Deadline 1	BB	DL	CD
P01	S8	12/09/2022	First Issued	BB	DL	CD
Rev	Status	Rev. Date	Purpose of revision	Drawn	Chck'd	Apprv'd

For location see Figure 7.16 - Visual Effects Drawing with Representative Viewpoint Locations

Upper Viewpoint (Summer): N-(CH)10
 Date and Time: 03/06/2019 10:26

Camera: Canon EOS 6D MkII
 Lens: Canon EF 50mm f/1.8 STM
 Equipment: Manfrotto MA 454 Micro Positioning Plate
 Manfrotto SBH-100 Ball Head

FL, Max Aperture: 50mm, 1.75
 Tripod Height: 1.5m
 Viewpoint Ground Height: 1.6m AOD
 Viewpoint Grid Reference: 568975E, 176330N

Distance to Order Limits: 60m
 View Direction (Centre of View): SW
 GPS Accuracy: 5m

Lower Viewpoint (Summer): N-(CH)11
 Date and Time: 04/06/2019 11:30

FL, Max Aperture: 50mm, 1.75
 Tripod Height: 1.8m
 Viewpoint Ground Height: 31m AOD
 Viewpoint Grid Reference: 563430E, 181199N

Distance to Order Limits: 11m
 View Direction (Centre of View): SW
 GPS Accuracy: 5m



LOWER THAMES CROSSING
 5th Floor Beaufort House
 15 St Botolph Street
 London EC3A 7DT

Project: LOWER THAMES CROSSING
 Drawing title: Figure 6.6
 Representative Viewpoints - Summer View
 Heritage Viewpoint N-(CH)10 and N-(CH)11
 Sheet 1 of 2

Drawn	BB	Date - 12/09/2022	Status	Revision
Checked	DL	Date - 12/09/2022	PINS SUBMISSION	P02
Approved	CD	Date - 12/09/2022	Application Document No. TR010032/APP/6.2	
Drawing number		HE540039-CJV-ELS-SZP_ZZ000000_Z-DR-LV-00207		



PHOTO FRAME INTENTIONALLY BLANK

P02	S9	12/07/2023	Deadline 1	BB	DL	CD
P01	S8	12/09/2022	First Issued	BB	DL	CD
Rev	Status	Rev. Date	Purpose of revision	Drawn	Chck'd	Apprv'd

For location see Figure 7.16 - Visual Effects Drawing with Representative Viewpoint Locations			Upper Viewpoint (Summer): N-(CH)10		
			Date and Time: 03/06/2019 10:26		
Camera:	Canon EOS 6D MkII	FL, Max Aperture:	50mm, 1.75	Distance to Order Limits:	60m
Lens:	Canon EF 50mm f/1.8 STM	Tripod Height:	1.5m	View Direction	(Centre of View): SW
Equipment:	Manfrotto MA 454 Micro Positioning Plate	Viewpoint Ground Height:	1.6m AOD	GPS Accuracy:	5m
	Manfrotto SBH-100 Ball Head	Viewpoint Grid Reference:	568975E, 176330N		



LOWER THAMES CROSSING
 5th Floor Beaufort House
 15 St Botolph Street
 London EC3A 7DT

Project	LOWER THAMES CROSSING
Drawing title	Figure 6.6 Representative Viewpoints - Summer View Heritage Viewpoint N-(CH)10 and N-(CH)11 Sheet 2 of 2

Drawn	BB	Date - 12/09/2022	Status	PINS SUBMISSION	Revision	P02
Checked	DL	Date - 12/09/2022	Application Document No. TR010032/APP/6.2			
Approved	CD	Date - 12/09/2022	Drawing number			
HE540039-CJV-ELS-SZP_ZZ000000_Z-DR-LV-00208						



PHOTO FRAME INTENTIONALLY BLANK

P02	S9	12/07/2023	Deadline 1	BB	DL	CD
P01	S8	12/09/2022	First Issued	BB	DL	CD
Rev	Status	Rev. Date	Purpose of revision	Drawn	Chck'd	Apprv'd

For location see Figure 7.16 - Visual Effects Drawing with Representative Viewpoint Locations			Upper Viewpoint (Summer): N-(CH)12		
			Date and Time: 04/06/2019 11:09		
Camera:	Canon EOS 6D MkII	FL, Max Aperture:	50mm, 1.75	Distance to Order Limits:	0m
Lens:	Canon EF 50mm f/1.8 STM	Tripod Height:	1.5m	View Direction:	(Centre of View); ENE
Equipment:	Manfrotto MA 454 Micro Positioning Plate	Viewpoint Ground Height:	21.8m AOD	GPS Accuracy:	5m
	Manfrotto SBH-100 Ball Head	Viewpoint Grid Reference:	562247E, 180911N		



LOWER THAMES CROSSING
 5th Floor Beaufort House
 15 St Botolph Street
 London EC3A 7DT

Project: LOWER THAMES CROSSING
 Drawing title: Figure 6.6
 Representative Viewpoints - Summer View
 Heritage Viewpoint N-(CH)12
 Sheet 1 of 2

Drawn	BB	Date - 12/09/2022	Status	PINS SUBMISSION	Revision	P02
Checked	DL	Date - 12/09/2022	Application Document No. TR010032/APP/6.2			
Approved	CD	Date - 12/09/2022	Drawing number			
HE540039-CJV-ELS-SZP_ZZ000000_Z-DR-LV-00209						



PHOTO FRAME INTENTIONALLY BLANK

P02	S9	12/07/2023	Deadline 1	BB	DL	CD
P01	S8	12/09/2022	First Issued	BB	DL	CD
Rev	Status	Rev. Date	Purpose of revision	Drawn	Chck'd	Apprv'd

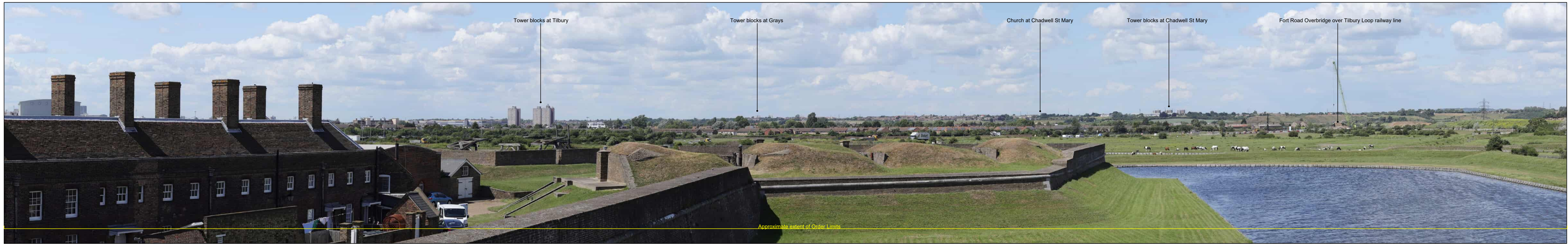
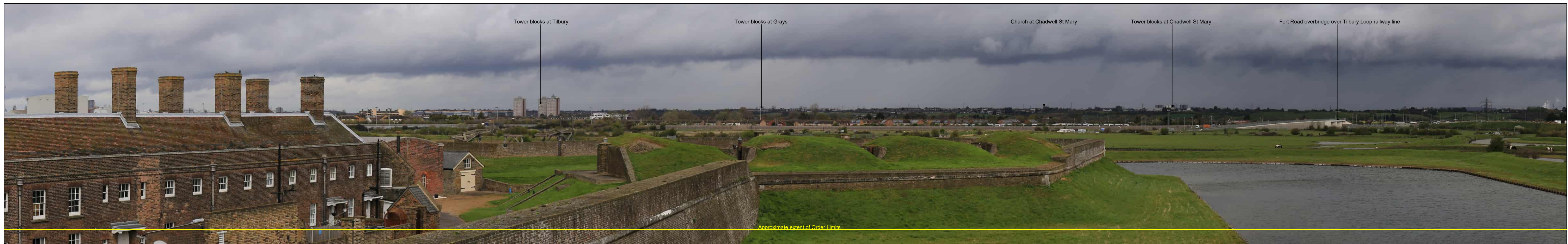
For location see Figure 7.16 - Visual Effects Drawing with Representative Viewpoint Locations			Upper Viewpoint (Summer): N-(CH)12		
			Date and Time: 04/06/2019 11:09		
Camera:	Canon EOS 6D MkII	FL, Max Aperture:	50mm, 1.75	Distance to Order Limits:	0m
Lens:	Canon EF 50mm f/1.8 STM	Tripod Height:	1.5m	View Direction	(Centre of View): ENE
Equipment:	Manfrotto MA 454 Micro Positioning Plate	Viewpoint Ground Height:	21.8m AOD	GPS Accuracy:	5m
	Manfrotto SBH-100 Ball Head	Viewpoint Grid Reference:	562247E, 180911N		



LOWER THAMES CROSSING
 5th Floor Beaufort House
 15 St Botolph Street
 London EC3A 7DT

Project: LOWER THAMES CROSSING
 Drawing title: Figure 6.6
 Representative Viewpoints - Summer View
 Heritage Viewpoint N-(CH)12
 Sheet 2 of 2

Drawn	BB	Date - 12/09/2022	Status	PINS SUBMISSION	Revision	P02
Checked	DL	Date - 12/09/2022	Application Document No. TR010032/APP/6.2			
Approved	CD	Date - 12/09/2022				
Drawing number		HE540039-CJV-ELS-SZP_ZZ000000_Z-DR-LV-00210				



P02	S9	12/07/2023	Deadline 1	BB	DL	CD
P01	S8	12/09/2022	First Issued	BB	DL	CD
Rev	Status	Rev. Date	Purpose of revision	Drawn	Chck'd	Apprv'd

For location see Figure 7.16 - Visual Effects Drawing with Representative Viewpoint Locations

Upper Viewpoint (Summer): N-01	Date and Time:	06/04/2022 09:21			
Camera:	Canon EOS 6D MkII	FL, Max Aperture:	50mm, 1.75	Distance to Order Limits:	730m
Lens:	Canon EF 50mm f/1.8 STM	Tripod Height:	1.5m	View Direction:	NNE
Equipment:	Manfrotto MA 454 Micro Positioning Plate	Viewpoint Ground Height:	2.8m AOD	(Centre of View):	NNE
	Manfrotto SBH-100 Ball Head	Viewpoint Grid Reference:	565211E, 175312N	GPS Accuracy:	5m

Lower Viewpoint (Summer): N-01	Date and Time:	24/06/2019 06:32	
FL, Max Aperture:	50mm, 1.75	Distance to Order Limits:	730m
Tripod Height:	1.5m	View Direction:	NNE
Viewpoint Ground Height:	2.8m AOD	(Centre of View):	NNE
Viewpoint Grid Reference:	565211E, 175312N	GPS Accuracy:	5m



LOWER THAMES CROSSING
 5th Floor Beaufort House
 15 St Botolph Street
 London EC3A 7DT

Project LOWER THAMES CROSSING
 Drawing title Figure 6.6
 Representative Viewpoints - Winter and Summer Views
 Heritage Viewpoint N-01
 Sheet 1 of 2

Drawn	BB	Date - 12/09/2022	Status	Revision
Checked	DL	Date - 12/09/2022	PINS SUBMISSION	P02
Approved	CD	Date - 12/09/2022	Application Document No. TR010032/APP/6.2	
Drawing number		HE540039-CJV-ELS-SZP_ZZ000000_Z-DR-LV-00222		



P02	S9	12/07/2023	Deadline 1	BB	DL	CD
P01	S8	12/09/2022	First Issued	BB	DL	CD
Rev	Status	Rev. Date	Purpose of revision	Drawn	Chck'd	Apprv'd

For location see Figure 7.16 - Visual Effects Drawing with Representative Viewpoint Locations

Upper Viewpoint (Summer): N-01
Date and Time: 06/04/2022 09:21

Camera: Canon EOS 6D MkII
Lens: Canon EF 50mm f/1.8 STM
Equipment: Manfrotto MA 454 Micro Positioning Plate
Manfrotto SBH-100 Ball Head

FL, Max Aperture: 50mm, 1.75
Tripod Height: 1.5m
Viewpoint Ground Height: 2.8m AOD
Viewpoint Grid Reference: 565211E, 175312N

Distance to Order Limits: 730m
View Direction: NNE (Centre of View);
GPS Accuracy: 5m

Lower Viewpoint (Summer): N-01
Date and Time: 24/06/2019 06:32

FL, Max Aperture: 50mm, 1.75
Tripod Height: 1.5m
Viewpoint Ground Height: 2.8m AOD
Viewpoint Grid Reference: 565211E, 175312N

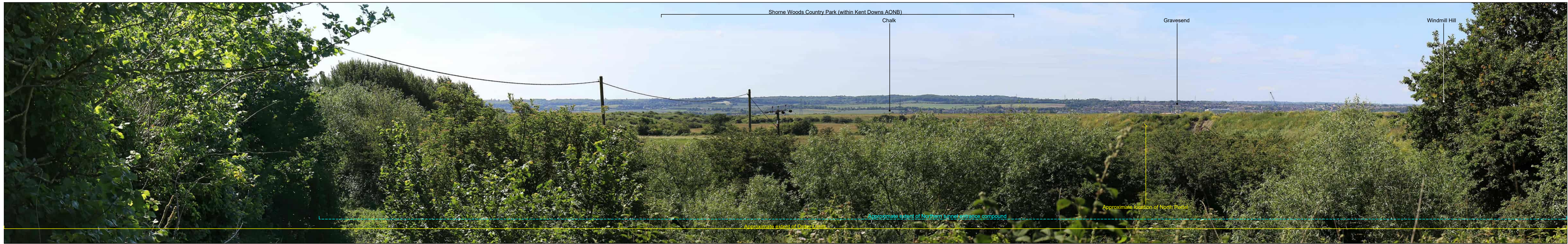
Distance to Order Limits: 730m
View Direction: NNE (Centre of View);
GPS Accuracy: 5m



LOWER THAMES CROSSING
5th Floor Beaufort House
15 St Botolph Street
London EC3A 7DT

Project: LOWER THAMES CROSSING
Drawing title: Figure 6.6
Representative Viewpoints - Winter and Summer Views
Heritage Viewpoint N-01
Sheet 2 of 2

Drawn	BB	Date - 12/09/2022	Status	Revision
Checked	DL	Date - 12/09/2022	PINS SUBMISSION	P02
Approved	CD	Date - 12/09/2022	Application Document No. TR010032/APP/6.2	
Drawing number HE540039-CJV-ELS-SZP_ZZ000000_Z-DR-LV-00223				



P02	S9	12/07/2023	Deadline 1	BB	DL	CD
P01	S8	12/09/2022	First Issued	BB	DL	CD
Rev	Status	Rev. Date	Purpose of revision	Drawn	Chck'd	Apprv'd

For location see Figure 7.16 - Visual Effects Drawing with Representative Viewpoint Locations

Upper Viewpoint (Summer): N-06
Date and Time: 18/02/2019 14:45

Camera: Canon EOS 6D MkII
Lens: Canon EF 50mm f/1.8 STM
Equipment: Manfrotto MA 454 Micro Positioning Plate
Manfrotto SBH-100 Ball Head

FL, Max Aperture: 50mm, 1.75
Tripod Height: 1.5m
Viewpoint Ground Height: 4.3m AOD
Viewpoint Grid Reference: 567539E, 177129N

Distance to Order Limits: 0m
View Direction (Centre of View): SSE
GPS Accuracy: 5m

Lower Viewpoint (Summer): N-06
Date and Time: 14/06/2022 08:55

FL, Max Aperture: 50mm, 1.75
Tripod Height: 1.5m
Viewpoint Ground Height: 4.3m AOD
Viewpoint Grid Reference: 567539E, 177129N

Distance to Order Limits: 0m
View Direction (Centre of View): SSE
GPS Accuracy: 5m



LOWER THAMES CROSSING
5th Floor Beaufort House
15 St Botolph Street
London EC3A 7DT

Project: LOWER THAMES CROSSING
Drawing title: Figure 6.6
Representative Viewpoints - Winter and Summer Views
Heritage Viewpoint N-06
Sheet 1 of 1

Drawn	BB	Date - 12/09/2022	Status	Revision
Checked	DL	Date - 12/09/2022	PINS SUBMISSION	P02
Approved	CD	Date - 12/09/2022	Application Document No. TR010032/APP/6.2	
Drawing number		HE540039-CJV-ELS-SZP_ZZ000000_Z-DR-LV-00224		



P02	S9	12/07/2023	Deadline 1	BB	DL	CD
P01	S8	12/09/2022	First Issued	BB	DL	CD
Rev	Status	Rev. Date	Purpose of revision	Drawn	Chck'd	Apprv'd

For location see Figure 7.16 - Visual Effects Drawing with Representative Viewpoint Locations

Upper Viewpoint (Summer): N-08
Date and Time: 18/02/2019 14:52

Camera: Canon EOS 6D MkII
Lens: Canon EF 50mm f/1.8 STM
Equipment: Manfrotto MA 454 Micro Positioning Plate
Manfrotto SBH-100 Ball Head

FL, Max Aperture: 50mm, 1.75
Tripod Height: 1.5m
Viewpoint Ground Height: 4.9m AOD
Viewpoint Grid Reference: 566777E, 177724N

Distance to Order Limits: 0m
View Direction (Centre of View): E
GPS Accuracy: 5m

Lower Viewpoint (Summer): N-08
Date and Time: 03/06/2019 14:55

FL, Max Aperture: 50mm, 1.75
Tripod Height: 1.5m
Viewpoint Ground Height: 4.9m AOD
Viewpoint Grid Reference: 566777E, 177724N

Distance to Order Limits: 0m
View Direction (Centre of View): E
GPS Accuracy: 5m



LOWER THAMES CROSSING
5th Floor Beaufort House
15 St Botolph Street
London EC3A 7DT

Project: LOWER THAMES CROSSING
Drawing title: Figure 6.6
Representative Viewpoints - Winter and Summer Views
Heritage Viewpoint N-08
Sheet 1 of 2

Drawn	BB	Date - 12/09/2022	Status	Revision
Checked	DL	Date - 12/09/2022	PINS SUBMISSION	P02
Approved	CD	Date - 12/09/2022	Application Document No. TR010032/APP/6.2	
Drawing number		HE540039-CJV-ELS-SZP_ZZ000000_Z-DR-LV-00225		



P02	S9	12/07/2023	Deadline 1	BB	DL	CD
P01	S8	12/09/2022	First Issued	BB	DL	CD
Rev	Status	Rev. Date	Purpose of revision	Drawn	Chck'd	Apprv'd

For location see Figure 7.16 - Visual Effects Drawing with Representative Viewpoint Locations

Upper Viewpoint (Summer): N-08
Date and Time: 18/02/2019 14:52

Camera: Canon EOS 6D MkII
Lens: Canon EF 50mm f/1.8 STM
Equipment: Manfrotto MA 454 Micro Positioning Plate
Manfrotto SBH-100 Ball Head

FL, Max Aperture: 50mm, 1.75
Tripod Height: 1.5m
Viewpoint Ground Height: 4.9m AOD
Viewpoint Grid Reference: 566777E, 177724N

Distance to Order Limits: 0m
View Direction (Centre of View): E
GPS Accuracy: 5m

Lower Viewpoint (Summer): N-08
Date and Time: 03/06/2019 14:55

FL, Max Aperture: 50mm, 1.75
Tripod Height: 1.5m
Viewpoint Ground Height: 4.9m AOD
Viewpoint Grid Reference: 566777E, 177724N

Distance to Order Limits: 0m
View Direction (Centre of View): E
GPS Accuracy: 5m



Client

LOWER THAMES CROSSING

5th Floor Beaufort House
15 St Botolph Street
London EC3A 7DT

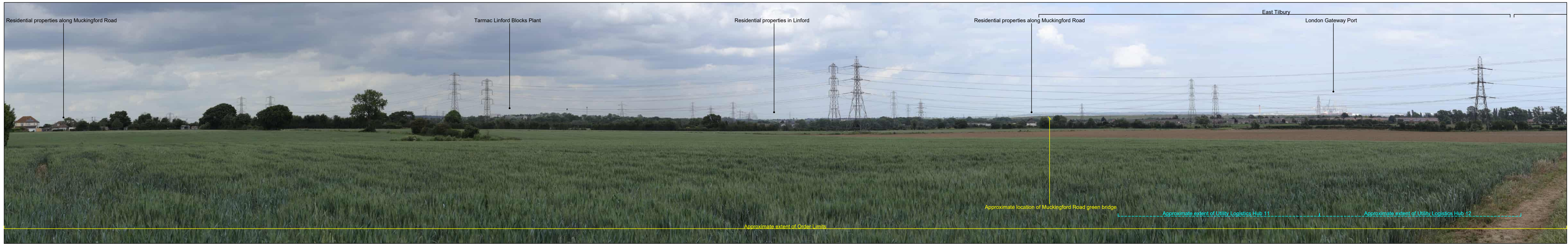
Project

LOWER THAMES CROSSING

Drawing title

Figure 6.6
Representative Viewpoints - Winter and Summer Views
Heritage Viewpoint N-08
Sheet 2 of 2

Drawn	BB	Date - 12/09/2022	Status	Revision
Checked	DL	Date - 12/09/2022	PINS SUBMISSION	P02
Approved	CD	Date - 12/09/2022	Application Document No. TR010032/APP/6.2	
Drawing number		HE540039-CJV-ELS-SZP_ZZ000000_Z-DR-LV-00226		



P02	S9	12/07/2023	Deadline 1	BB	DL	CD
P01	S8	12/09/2022	First Issued	BB	DL	CD
Rev	Status	Rev. Date	Purpose of revision	Drawn	Chck'd	Apprv'd

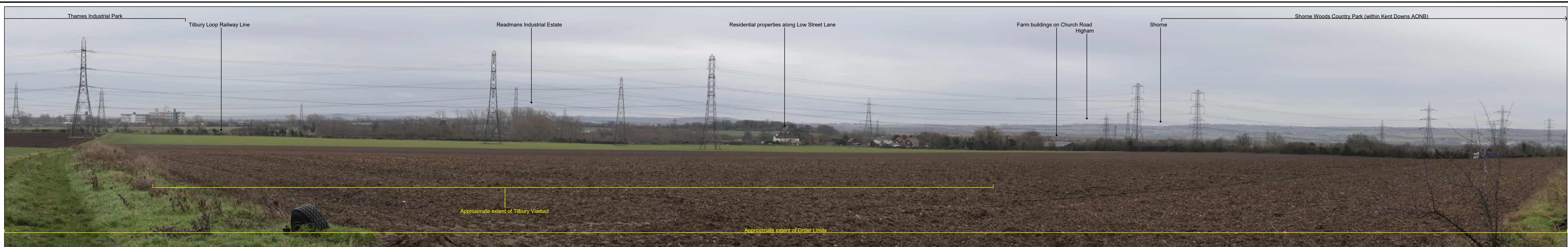
For location see Figure 7.16 - Visual Effects Drawing with Representative Viewpoint Locations		Upper Viewpoint (Summer): N-09 Date and Time: 18/02/2019 15:15		Lower Viewpoint (Summer): N-09 Date and Time: 03/06/2019 15:13	
Camera:	Canon EOS 6D MkII	FL, Max Aperture:	50mm, 1.75	Distance to Order Limits:	450m
Lens:	Canon EF 50mm f/1.8 STM	Tripod Height:	1.5m	View Direction	ENE
Equipment:	Manfrotto MA 454 Micro Positioning Plate	Viewpoint Ground Height:	26.3m AOD	(Centre of View):	ENE
	Manfrotto SBH-100 Ball Head	Viewpoint Grid Reference:	566219E, 178124N	GPS Accuracy:	5m



LOWER THAMES CROSSING
5th Floor Beaufort House
15 St Botolph Street
London EC3A 7DT

Project: LOWER THAMES CROSSING
Drawing title: Figure 6.6
Representative Viewpoints - Winter and Summer Views
Heritage Viewpoint N-09
Sheet 1 of 2

Drawn	BB	Date - 12/09/2022	Status	Revision
Checked	DL	Date - 12/09/2022	PINS SUBMISSION	P02
Approved	CD	Date - 12/09/2022	Application Document No. TR010032/APP/6.2	
Drawing number		HE540039-CJV-ELS-SZP_ZZ000000_Z-DR-LV-00227		



P02	S9	12/07/2023	Deadline 1	BB	DL	CD
P01	S8	12/09/2022	First Issued	BB	DL	CD
Rev	Status	Rev. Date	Purpose of revision	Drawn	Chck'd	Apprv'd

For location see Figure 7.16 - Visual Effects Drawing with Representative Viewpoint Locations

Upper Viewpoint (Summer): N-09
Date and Time: 18/02/2019 15:15

Camera: Canon EOS 6D MkII
Lens: Canon EF 50mm f/1.8 STM
Equipment: Manfrotto MA 454 Micro Positioning Plate
Manfrotto SBH-100 Ball Head

FL, Max Aperture: 50mm, 1.75
Tripod Height: 1.5m
Viewpoint Ground Height: 26.3m AOD
Viewpoint Grid Reference: 566219E, 178124N

Lower Viewpoint (Summer): N-09
Date and Time: 03/06/2019 15:13

FL, Max Aperture: 50mm, 1.75
Tripod Height: 1.5m
Viewpoint Ground Height: 26.3m AOD
Viewpoint Grid Reference: 566219E, 178124N

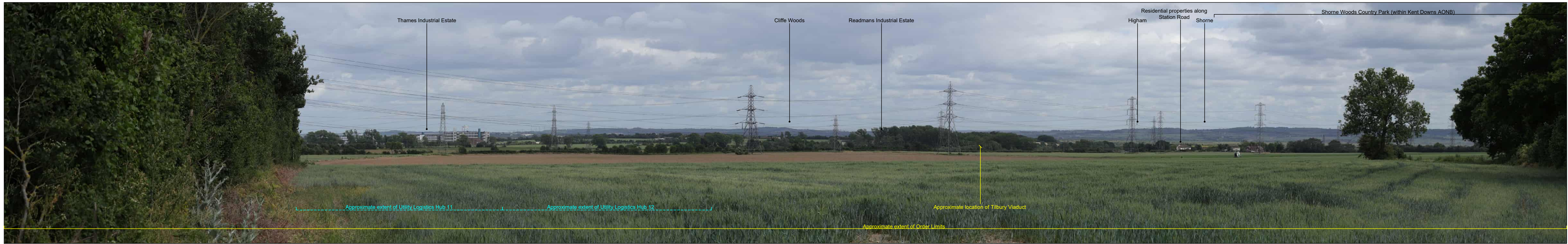
Distance to Order Limits: 450m
View Direction (Centre of View): ENE
GPS Accuracy: 5m



LOWER THAMES CROSSING
5th Floor Beaufort House
15 St Botolph Street
London EC3A 7DT

Project: LOWER THAMES CROSSING
Drawing title: Figure 6.6
Representative Viewpoints - Winter and Summer Views
Heritage Viewpoint N-09
Sheet 2 of 2

Drawn	BB	Date - 12/09/2022	Status	Revision
Checked	DL	Date - 12/09/2022	PINS SUBMISSION	P02
Approved	CD	Date - 12/09/2022	Application Document No. TR010032/APP/6.2	
Drawing number		HE540039-CJV-ELS-SZP_ZZ000000_Z-DR-LV-00228		



P02	S9	12/07/2023	Deadline 1	BB	DL	CD
P01	S8	12/09/2022	First Issued	BB	DL	CD
Rev	Status	Rev. Date	Purpose of revision	Drawn	Chck'd	Apprv'd

For location see Figure 7.16 - Visual Effects Drawing with Representative Viewpoint Locations

Winter Viewpoint (Top):
 Date and Time: N-11 18/02/2019 15:52
 FL, Max Aperture: 50mm, 1.75
 Tripod Height: 1.5m
 Viewpoint Ground Height: 19m AOD
 Viewpoint Grid Reference: 566222E, 178572N
 Distance to Order Limits: 13m
 View Direction (Centre of View): SE
 GPS Accuracy: 5m

Summer Viewpoint:
 Date and Time: N-11 03/06/2019 15:52
 FL, Max Aperture: 50mm, 1.75
 Tripod Height: 1.5m
 Viewpoint Ground Height: 19m AOD
 Viewpoint Grid Reference: 566222E, 178572N
 Distance to Order Limits: 13m
 View Direction (Centre of View): SE
 GPS Accuracy: 5m



LOWER THAMES CROSSING
 5th Floor Beaufort House
 15 St Botolph Street
 London EC3A 7DT

Project: LOWER THAMES CROSSING
 Drawing title: Figure 6.6
 Representative Viewpoints - Winter and Summer Views
 Heritage Viewpoint N-11
 Sheet 1 of 1

Drawn	BB	Date - 12/09/2022	Status	Revision
Checked	DL	Date - 12/09/2022	PINS SUBMISSION	P02
Approved	CD	Date - 12/09/2022	Application Document No. TR010032/APP/6.2	
Drawing number		HE540039-CJV-ELS-SZP_ZZ000000_Z-DR-LV-00229		



P02	S9	12/07/2023	Deadline 1	BB	DL	CD
P01	S8	12/09/2022	First Issued	BB	DL	CD
Rev	Status	Rev. Date	Purpose of revision	Drawn	Chk'd	Appr'd

For location see Figure 7.16 - Visual Effects Drawing with Representative Viewpoint Locations		Winter Viewpoint (Top):	N-38	Summer Viewpoint:	N-38
		Date and Time:	22/02/2019 11:25	Date and Time:	05/06/2019 13:22
Camera:	Canon EOS 6D MkII	FL, Max Aperture:	50mm, 1.75	FL, Max Aperture:	50mm, 1.75
Lens:	Canon EF 50mm f/1.8 STM	Tripod Height:	1.5m	Tripod Height:	1.5m
Equipment:	Manfrotto MA 454 Micro Positioning Plate	Viewpoint Ground Height:	28.3m AOD	Viewpoint Ground Height:	28.3m AOD
	Manfrotto SBH-100 Ball Head	Viewpoint Grid Reference:	558887E, 184602N	Viewpoint Grid Reference:	558887E, 184602N
		Distance to Order Limits:	0m	Distance to Order Limits:	0m
		View Direction (Centre of View):	SSW	View Direction (Centre of View):	SSW
		GPS Accuracy:	5m	GPS Accuracy:	5m



LOWER THAMES CROSSING
 5th Floor Beaufort House
 15 St Botolph Street
 London EC3A 7DT

Project: LOWER THAMES CROSSING
 Drawing title: Figure 6.6
 Representative Viewpoints - Winter and Summer Views
 Heritage Viewpoint N-38
 Sheet 1 of 2

Drawn	BB	Date - 12/09/2022	Status	Revision
Checked	DL	Date - 12/09/2022	PINS SUBMISSION	P02
Approved	CD	Date - 12/09/2022	Application Document No. TR010032/APP/6.2	
Drawing number		HE540039-CJV-ELS-SZP_ZZ000000_Z-DR-LV-00230		



P02	S9	12/07/2023	Deadline 1	BB	DL	CD
P01	S8	12/09/2022	First Issued	BB	DL	CD
Rev	Status	Rev. Date	Purpose of revision	Drawn	Chck'd	Apprv'd

For location see Figure 7.16 - Visual Effects Drawing with Representative Viewpoint Locations		Winter Viewpoint (Top):	N-38	Summer Viewpoint:	N-38
		Date and Time:	22/02/2019 11:25	Date and Time:	05/06/2019 13:22
Camera:	Canon EOS 6D MkII	FL, Max Aperture:	50mm, 1.75	FL, Max Aperture:	50mm, 1.75
Lens:	Canon EF 50mm f/1.8 STM	Tripod Height:	1.5m	Tripod Height:	1.5m
Equipment:	Manfrotto MA 454 Micro Positioning Plate	Viewpoint Ground Height:	28.3m AOD	Viewpoint Ground Height:	28.3m AOD
	Manfrotto SBH-100 Ball Head	Viewpoint Grid Reference:	558887E, 184602N	Viewpoint Grid Reference:	558887E, 184602N
		Distance to Order Limits:	0m	Distance to Order Limits:	0m
		View Direction:	(Centre of View): SSW	View Direction:	(Centre of View): SSW
		GPS Accuracy:	5m	GPS Accuracy:	5m



LOWER THAMES CROSSING
 5th Floor Beaufort House
 15 St Botolph Street
 London EC3A 7DT

Project	LOWER THAMES CROSSING
Drawing title	Figure 6.6 Representative Viewpoints - Winter and Summer Views Heritage Viewpoint N-38 Sheet 2 of 2

Drawn	BB	Date - 12/09/2022	Status	Revision
Checked	DL	Date - 12/09/2022	PINS SUBMISSION	P02
Approved	CD	Date - 12/09/2022	Application Document No. TR010032/APP/6.2	
Drawing number		HE540039-CJV-ELS-SZP_ZZ000000_Z-DR-LV-00231		



P02	S9	12/07/2023	Deadline 1	BB	DL	CD
P01	S8	12/09/2022	First Issued	BB	DL	CD
Rev	Status	Rev. Date	Purpose of revision	Drawn	Chck'd	Apprv'd

For location see Figure 7.16 - Visual Effects Drawing with Representative Viewpoint Locations

Winter Viewpoint (Top):
 Date and Time: N-39 22/02/2019 11:10
 FL, Max Aperture: 50mm, 1.75
 Tripod Height: 1.5m
 Viewpoint Ground Height: 26.9m AOD
 Viewpoint Grid Reference: 558690E, 184852N
 Distance to Order Limits: 0m
 View Direction (Centre of View): W
 GPS Accuracy: 5m

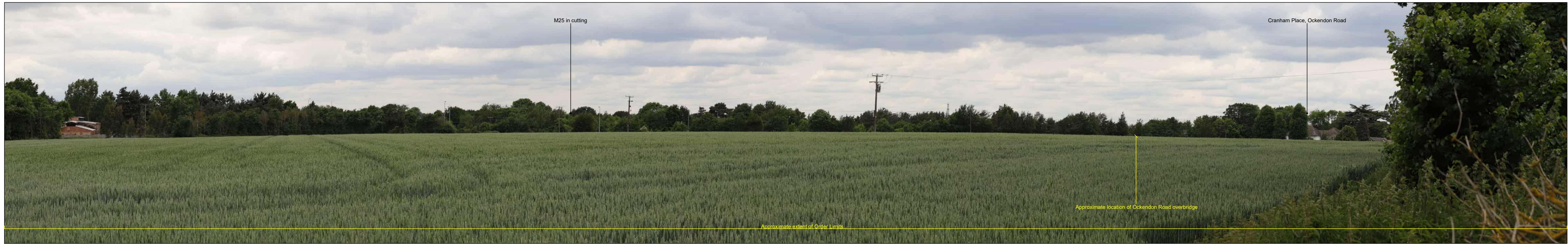
Summer Viewpoint:
 Date and Time: N-39 05/06/2019 13:43
 FL, Max Aperture: 50mm, 1.75
 Tripod Height: 1.5m
 Viewpoint Ground Height: 26.9m AOD
 Viewpoint Grid Reference: 558690E, 184852N
 Distance to Order Limits: 0m
 View Direction (Centre of View): W
 GPS Accuracy: 5m



LOWER THAMES CROSSING
 5th Floor Beaufort House
 15 St Botolph Street
 London EC3A 7DT

Project: LOWER THAMES CROSSING
 Drawing title: Figure 6.6
 Representative Viewpoints - Winter and Summer Views
 Heritage Viewpoint N-39
 Sheet 1 of 2

Drawn	BB	Date - 12/09/2022	Status	Revision
Checked	DL	Date - 12/09/2022	PINS SUBMISSION	P02
Approved	CD	Date - 12/09/2022	Application Document No. TR010032/APP/6.2	
Drawing number		HE540039-CJV-ELS-SZP_ZZ000000_Z-DR-LV-00232		



P02	S9	12/07/2023	Deadline 1	BB	DL	CD
P01	S8	12/09/2022	First Issued	BB	DL	CD
Rev	Status	Rev. Date	Purpose of revision	Drawn	Chck'd	Apprv'd

For location see Figure 7.16 - Visual Effects Drawing with Representative Viewpoint Locations

Winter Viewpoint (Top): N-39
Date and Time: 22/02/2019 11:10
Camera: Canon EOS 6D MkII
Lens: Canon EF 50mm f/1.8 STM
Equipment: Manfrotto MA 454 Micro Positioning Plate
Manfrotto SBH-100 Ball Head

Summer Viewpoint: N-39
Date and Time: 05/06/2019 13:43
FL, Max Aperture: 50mm, 1.75
Tripod Height: 1.5m
Viewpoint Ground Height: 26.9m AOD
Viewpoint Grid Reference: 558690E, 184852N

Distance to Order Limits: 0m
View Direction (Centre of View): W
GPS Accuracy: 5m



LOWER THAMES CROSSING
5th Floor Beaufort House
15 St Botolph Street
London EC3A 7DT

Project: LOWER THAMES CROSSING
Drawing title: Figure 6.6
Representative Viewpoints - Winter and Summer Views
Heritage Viewpoint N-39
Sheet 2 of 2

Drawn	BB	Date - 12/09/2022	Status	Revision
Checked	DL	Date - 12/09/2022	PINS SUBMISSION	P02
Approved	CD	Date - 12/09/2022	Application Document No. TR010032/APP/6.2	
Drawing number		HE540039-CJV-ELS-SZP_ZZ000000_Z-DR-LV-00233		



P02	S9	12/07/2023	Deadline 1	BB	DL	CD
P01	S8	12/09/2022	First Issued	BB	DL	CD
Rev	Status	Rev. Date	Purpose of revision	Drawn	Chck'd	Apprv'd

For location see Figure 7.16 - Visual Effects Drawing with Representative Viewpoint Locations

Winter Viewpoint (Top):
 Date and Time: N-42
 21/02/2019 15:19

FL, Max Aperture: 50mm, 1.75
 Tripod Height: 1.5m
 Viewpoint Ground Height: 21.5m AOD
 Viewpoint Grid Reference: 558347E, 186106N

Distance to Order Limits: 20m
 View Direction (Centre of View): SE
 GPS Accuracy: 5m

Summer Viewpoint:
 Date and Time: N-42
 05/06/2019 14:02

FL, Max Aperture: 50mm, 1.75
 Tripod Height: 1.5m
 Viewpoint Ground Height: 21.5m AOD
 Viewpoint Grid Reference: 558347E, 186106N

Distance to Order Limits: 20m
 View Direction (Centre of View): SE
 GPS Accuracy: 5m



LOWER THAMES CROSSING
 5th Floor Beaufort House
 15 St Botolph Street
 London EC3A 7DT

Project: LOWER THAMES CROSSING
 Drawing title: Figure 6.6
 Representative Viewpoints - Winter and Summer Views
 Heritage Viewpoint N-42
 Sheet 1 of 2

Drawn	BB	Date - 12/09/2022	Status	Revision
Checked	DL	Date - 12/09/2022	PINS SUBMISSION	P02
Approved	CD	Date - 12/09/2022	Application Document No. TR010032/APP/6.2	
Drawing number		HE540039-CJV-ELS-SZP_ZZ000000_Z-DR-LV-00234		



P02	S9	12/07/2023	Deadline 1	BB	DL	CD
P01	S8	12/09/2022	First Issued	BB	DL	CD
Rev	Status	Rev. Date	Purpose of revision	Drawn	Chck'd	Apprv'd

For location see Figure 7.16 - Visual Effects Drawing with Representative Viewpoint Locations

Winter Viewpoint (Top):
 Date and Time: N-42
 21/02/2019 15:19
 FL, Max Aperture: 50mm, 1.75
 Tripod Height: 1.5m
 Viewpoint Ground Height: 21.5m AOD
 Viewpoint Grid Reference: 558347E, 186106N
 Distance to Order Limits: 20m
 View Direction (Centre of View): SE
 GPS Accuracy: 5m

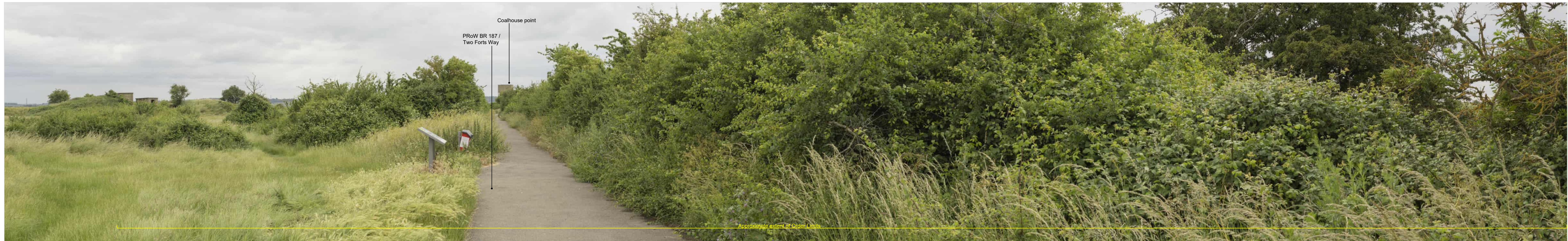
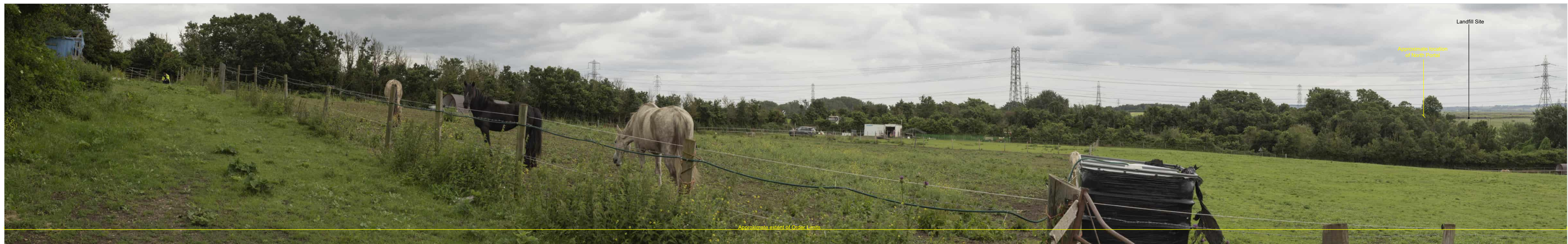
Summer Viewpoint:
 Date and Time: N-42
 05/06/2019 14:02
 FL, Max Aperture: 50mm, 1.75
 Tripod Height: 1.5m
 Viewpoint Ground Height: 21.5m AOD
 Viewpoint Grid Reference: 558347E, 186106N
 Distance to Order Limits: 20m
 View Direction (Centre of View): SE
 GPS Accuracy: 5m



LOWER THAMES CROSSING
 5th Floor Beaufort House
 15 St Botolph Street
 London EC3A 7DT

Project: LOWER THAMES CROSSING
 Drawing title: Figure 6.6
 Representative Viewpoints - Winter and Summer Views
 Heritage Viewpoint N-42
 Sheet 2 of 2

Drawn	BB	Date - 12/09/2022	Status	Revision
Checked	DL	Date - 12/09/2022	PINS SUBMISSION	P02
Approved	CD	Date - 12/09/2022	Application Document No. TR010032/APP/6.2	
Drawing number		HE540039-CJV-ELS-SZP_ZZ000000_Z-DR-LV-00235		



P02	S9	12/07/2023	Deadline 1	BB	DL	CD
P01	S8	12/09/2022	First Issued	BB	DL	CD
Rev	Status	Rev. Date	Purpose of revision	Drawn	Chck'd	Apprv'd

For location see Figure 7.16 - Visual Effects Drawing with Representative Viewpoint Locations		Upper Viewpoint (Summer): N-D06 Date and Time: 22/06/2021 13:26		Lower Viewpoint (Summer): N-D07 Date and Time: 22/06/2021 16:22	
Camera:	Canon EOS 6D MkII	FL, Max Aperture:	50mm, 1.75	Distance to Order Limits:	137m
Lens:	Canon EF 50mm f/1.8 STM	Tripod Height:	1.5m	View Direction:	SE
Equipment:	Manfrotto MA 454 Micro Positioning Plate	Viewpoint Ground Height:	17.6m AOD	(Centre of View):	W
	Manfrotto SBH-100 Ball Head	Viewpoint Grid Reference:	566179E, 177655N	GPS Accuracy:	5m



LOWER THAMES CROSSING
5th Floor Beaufort House
15 St Botolph Street
London EC3A 7DT

Project: LOWER THAMES CROSSING
Drawing title: Figure 6.6
Representative Viewpoints - Summer View
Heritage Viewpoint N-D06 & N-D07
Sheet 1 of 2

Drawn	BB	Date - 12/09/2022	Status	Revision
Checked	DL	Date - 12/09/2022	PINS SUBMISSION	P02
Approved	CD	Date - 12/09/2022	Application Document No. TR010032/APP/6.2	
Drawing number		HE540039-CJV-ELS-SZP_ZZ000000_Z-DR-LV-00241		



P02	S9	12/07/2023	Deadline 1	BB	DL	CD
P01	S8	12/09/2022	First Issued	BB	DL	CD
Rev	Status	Rev. Date	Purpose of revision	Drawn	Chck'd	Apprv'd

For location see Figure 7.16 - Visual Effects Drawing with Representative Viewpoint Locations

Upper Viewpoint (Summer): N-D06
Date and Time: 22/06/2021 13:26

Camera: Canon EOS 6D MkII
Lens: Canon EF 50mm f/1.8 STM
Equipment: Manfrotto MA 454 Micro Positioning Plate
Manfrotto SBH-100 Ball Head

FL, Max Aperture: 50mm, 1.75
Tripod Height: 1.5m
Viewpoint Ground Height: 17.6m AOD
Viewpoint Grid Reference: 568179E, 177655N

Distance to Order Limits: 137m
View Direction (Centre of View): SE
GPS Accuracy: 5m

Lower Viewpoint (Summer): N-D07
Date and Time: 22/06/2021 16:22

FL, Max Aperture: 50mm, 1.75
Tripod Height: 1.5m
Viewpoint Ground Height: 4.7m AOD
Viewpoint Grid Reference: 568973E, 177644N

Distance to Order Limits: 20m
View Direction (Centre of View): W
GPS Accuracy: 5m



LOWER THAMES CROSSING
5th Floor Beaufort House
15 St Botolph Street
London EC3A 7DT

Project: LOWER THAMES CROSSING
Drawing title: Figure 6.6
Representative Viewpoints - Summer View
Heritage Viewpoint N-D06 & N-D07
Sheet 2 of 2

Drawn	BB	Date - 12/09/2022	Status	Revision
Checked	DL	Date - 12/09/2022	PINS SUBMISSION	P02
Approved	CD	Date - 12/09/2022	Application Document No. TR010032/APP/6.2	
Drawing number		HE540039-CJV-ELS-SZP_ZZ000000_Z-DR-LV-00242		

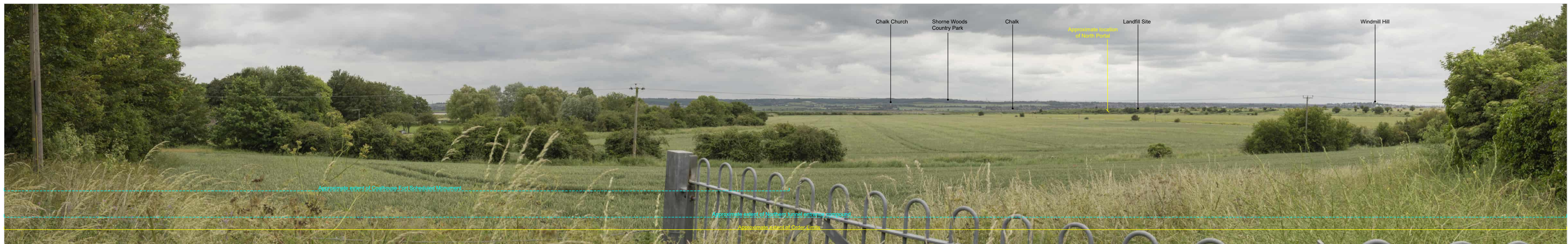


PHOTO FRAME INTENTIONALLY BLANK

P02	S9	12/07/2023	Deadline 1	BB	DL	CD
P01	S8	12/09/2022	First Issued	BB	DL	CD
Rev	Status	Rev. Date	Purpose of revision	Drawn	Chck'd	Apprv'd

For location see Figure 7.16 - Visual Effects Drawing with Representative Viewpoint Locations			Upper Viewpoint (Summer): N-D08		
			Date and Time: 22/06/2021 15:11		
Camera:	Canon EOS 6D MkII	FL, Max Aperture:	50mm, 1.75	Distance to Order Limits:	0m
Lens:	Canon EF 50mm f/1.8 STM	Tripod Height:	1.5m	View Direction	(Centre of View): WSW
Equipment:	Manfrotto MA 454 Micro Positioning Plate	Viewpoint Ground Height:	8.6m AOD	GPS Accuracy:	5m
	Manfrotto SBH-100 Ball Head	Viewpoint Grid Reference:	568860E, 176961N		



LOWER THAMES CROSSING
 5th Floor Beaufort House
 15 St Botolph Street
 London EC3A 7DT

Project: LOWER THAMES CROSSING
 Drawing title: Figure 6.6
 Representative Viewpoints - Summer View
 Heritage Viewpoint N-D08
 Sheet 1 of 2

Drawn	BB	Date - 12/09/2022	Status	PINS SUBMISSION	Revision	P02
Checked	DL	Date - 12/09/2022	Application Document No. TR010032/APP/6.2			
Approved	CD	Date - 12/09/2022				
Drawing number			HE540039-CJV-ELS-SZP_ZZ000000_Z-DR-LV-00243			

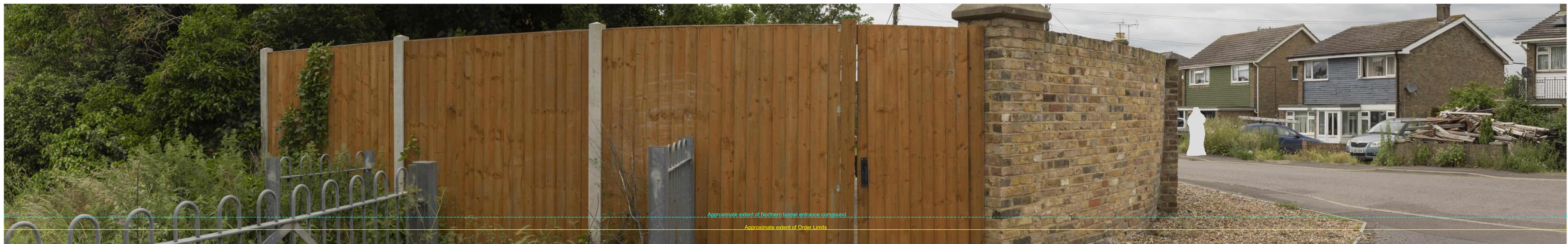


PHOTO FRAME INTENTIONALLY BLANK

P02	S9	12/07/2023	Deadline 1	BB	DL	CD
P01	S8	12/09/2022	First Issued	BB	DL	CD
Rev	Status	Rev. Date	Purpose of revision	Drawn	Chck'd	Apprv'd

For location see Figure 7.16 - Visual Effects Drawing with Representative Viewpoint Locations			Upper Viewpoint (Summer): N-D08 Date and Time: 22/06/2021 15:11		
Camera:	Canon EOS 6D MkII	FL, Max Aperture:	50mm, 1.75	Distance to Order Limits:	0m
Lens:	Canon EF 50mm f/1.8 STM	Tripod Height:	1.5m	View Direction	(Centre of View): WSW
Equipment:	Manfrotto MA 454 Micro Positioning Plate	Viewpoint Ground Height:	8.6m AOD	GPS Accuracy:	5m
	Manfrotto SBH-100 Ball Head	Viewpoint Grid Reference:	568860E, 176961N		



LOWER THAMES CROSSING
5th Floor Beaufort House
15 St Botolph Street
London EC3A 7DT

Project: LOWER THAMES CROSSING
Drawing title: Figure 6.6
Representative Viewpoints - Summer View
Heritage Viewpoint N-D08
Sheet 2 of 2

Drawn	BB	Date - 12/09/2022	Status	PINS SUBMISSION	Revision	P02
Checked	DL	Date - 12/09/2022	Application Document No. TR010032/APP/6.2			
Approved	CD	Date - 12/09/2022	Drawing number			
HE540039-CJV-ELS-SZP_ZZ000000_Z-DR-LV-00244						

If you need help accessing this or any other National Highways information, please call **0300 123 5000** and we will help you.

© Crown copyright 2023.

You may re-use this information (not including logos) free of charge in any format or medium, under the terms of the Open Government Licence. To view this licence:

visit www.nationalarchives.gov.uk/doc/open-government-licence/

write to the **Information Policy Team, The National Archives, Kew, London TW9 4DU**, or email psi@nationalarchives.gsi.gov.uk.

Mapping (where present): © Crown copyright and database rights 2023 OS 100030649. You are permitted to use this data solely to enable you to respond to, or interact with, the organisation that provided you with the data. You are not permitted to copy, sub-license, distribute or sell any of this data to third parties in any form.

If you have any enquiries about this publication email info@nationalhighways.co.uk or call **0300 123 5000***.

*Calls to 03 numbers cost no more than a national rate call to an 01 or 02 number and must count towards any inclusive minutes in the same way as 01 and 02 calls. These rules apply to calls from any type of line including mobile, BT, other fixed line or payphone. Calls may be recorded or monitored.

Printed on paper from well-managed forests and other controlled sources when issued directly by National Highways.

Registered office Bridge House, 1 Walnut Tree Close, Guildford GU1 4LZ

National Highways Company Limited registered in England and Wales number 09346363