

# A1 Birtley to Coal House

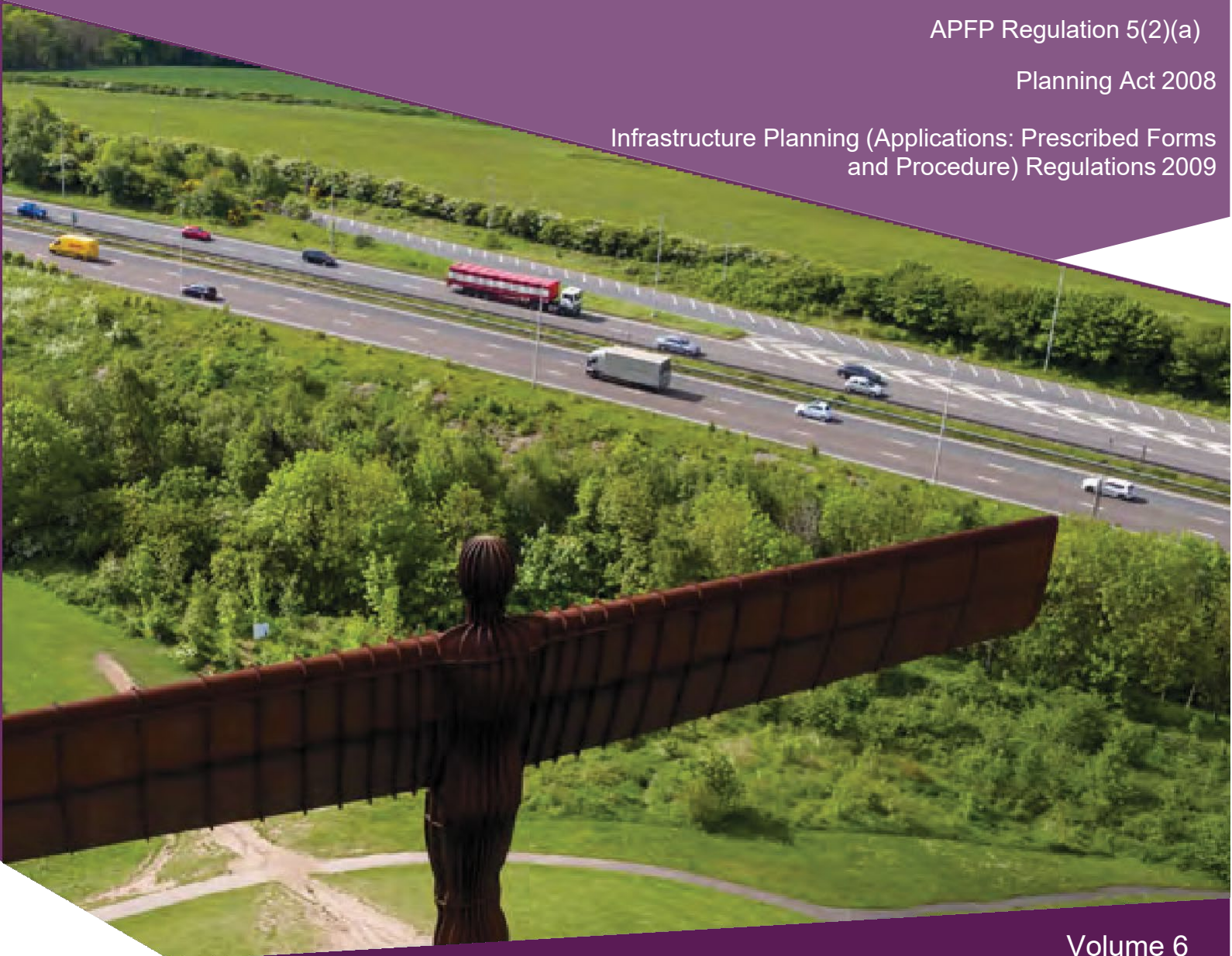
## Scheme Number: TR010031

### 6.2 Environmental Statement – Figures 12.3 Index of Multiple Deprivation Deciles for Lower Super Output Areas

APFP Regulation 5(2)(a)

Planning Act 2008

Infrastructure Planning (Applications: Prescribed Forms  
and Procedure) Regulations 2009



Infrastructure Planning

Planning Act 2008

**The Infrastructure Planning  
(Applications: Prescribed Forms and  
Procedures) Regulations 2009**

**A1 Birtley to Coal House  
Development Consent Order 20[xx]**

---

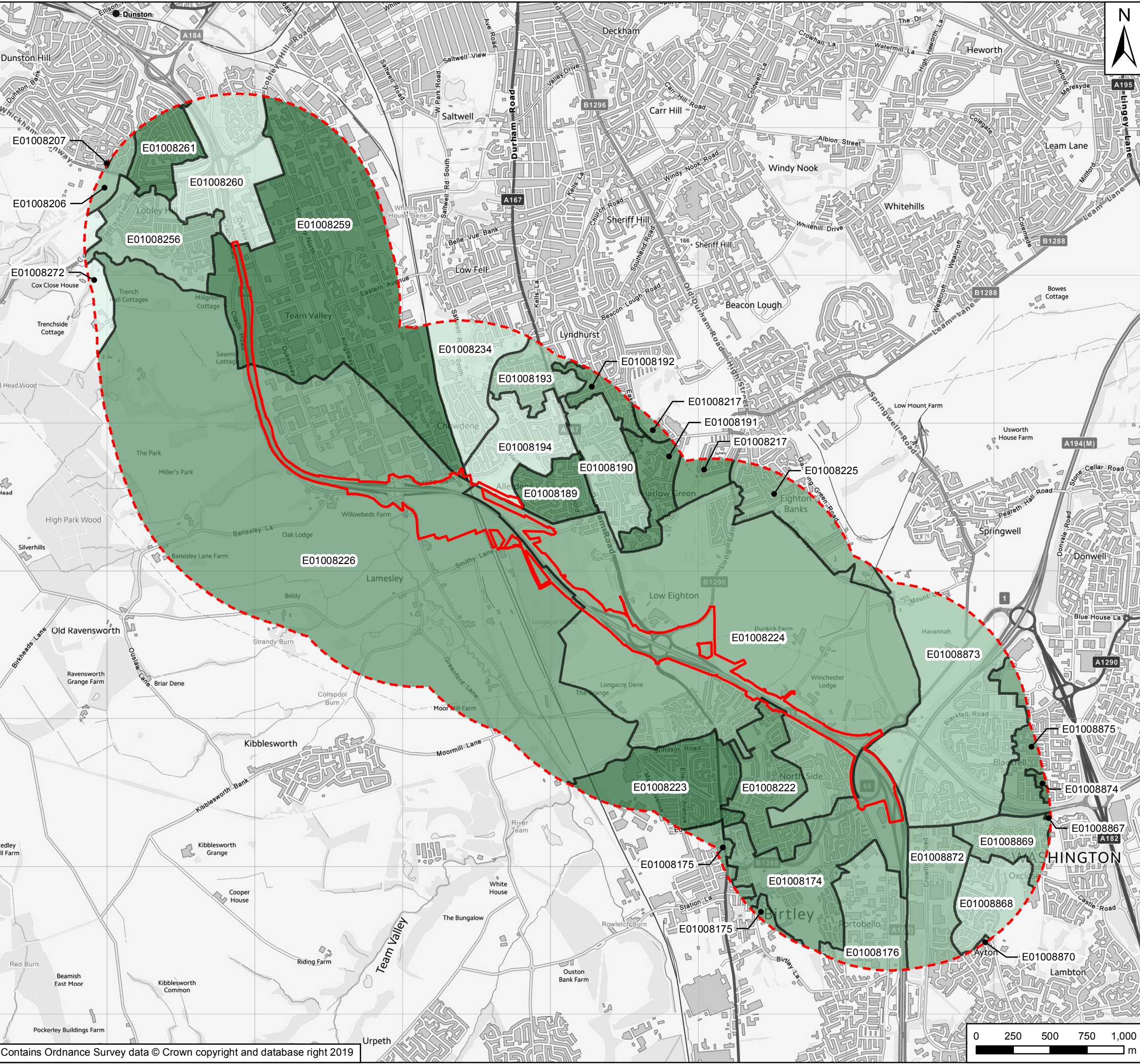
**Environmental Statement -  
Figures**

---

<b>Regulation Reference:</b>	APFP Regulation 5(2)(a)
<b>Planning Inspectorate Scheme Reference</b>	TR010031
<b>Application Document Reference</b>	TR010031/APP/6.2
<b>Author:</b>	A1 Birtley to Coal House Project Team, Highways England

<b>Version</b>	<b>Date</b>	<b>Status of Version</b>
Rev 0	14 August 2019	Application Issue





**Key**

- Scheme Footprint
- 1km Study Area

**IMD Decile**

- 1 - Most Deprived
- 2
- 3
- 4
- 5
- 6
- 7
- 8
- 9
- 10 - Least Deprived

P01	Jul 2019	First Issue	CB	SC	NJA
Rev	Date	Description	By	Chk'd	App'd
Suitability					Status

PINS Reference Number: **TR010031**

Client

Project Title: **A1 Birtley to Coal House Scheme**

Drawing Title: **Figure 12.3 Index of Multiple Deprivation Deciles for LSOA within 1km of the Scheme**

Scale	Drawn	Checked	Approved	Authorised
1:25,000	GH	CB	KS	NJA
Original Size	Date	Date	Date	Date
A3	Jul 2019	Jul 2019	Jul 2019	Jul 2019
Drawing Number	Originator	Volume	Revision	
HE551462	WSP	6.2	P01	
PW Stage Code				



If you need help accessing this or any other Highways England information, please call **0300 470 4580** and we will help you.

---

© Crown copyright 2019.

You may re-use this information (not including logos) free of charge in any format or medium, under the terms of the Open Government Licence. To view this licence:

visit [www.nationalarchives.gov.uk/doc/open-government-licence/](http://www.nationalarchives.gov.uk/doc/open-government-licence/)

write to the **Information Policy Team, The National Archives,**

**Kew, London TW9 4DU**, or email

[psi@nationalarchives.gsi.gov.uk](mailto:psi@nationalarchives.gsi.gov.uk).

This document is also available on our website at [www.gov.uk/highways](http://www.gov.uk/highways)

If you have any enquiries about this document [A1BirtleytoCoalhouse@highwaysengland.co.uk](mailto:A1BirtleytoCoalhouse@highwaysengland.co.uk) or call **0300 470 4580\***.

\*Calls to 03 numbers cost no more than a national rate call to an 01 or 02 number and must count towards any inclusive minutes in the same way as 01 and 02 calls.

These rules apply to calls from any type of line including mobile, BT, other fixed line or payphone. Calls may be recorded or monitored.

Registered office Bridge House, 1 Walnut Tree Close, Guildford GU1 4LZ  
Highways England Company Limited registered in England and Wales number 09346363