

A1 Birtley to Coal House

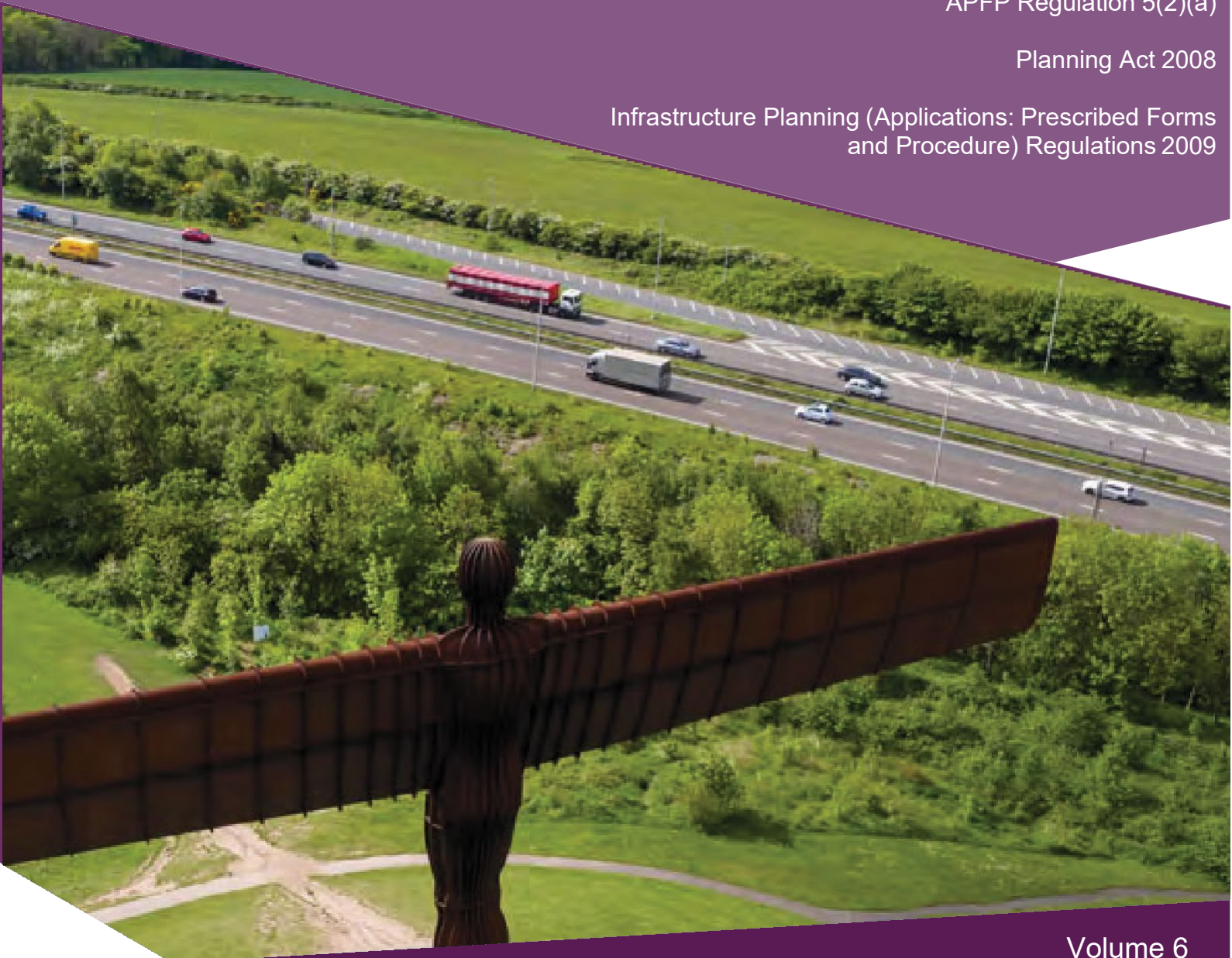
Scheme Number: TR010031

6.2 Environmental Statement – Figures 12.2 Community and Associated Facilities

APFP Regulation 5(2)(a)

Planning Act 2008

Infrastructure Planning (Applications: Prescribed Forms
and Procedure) Regulations 2009



Infrastructure Planning

Planning Act 2008

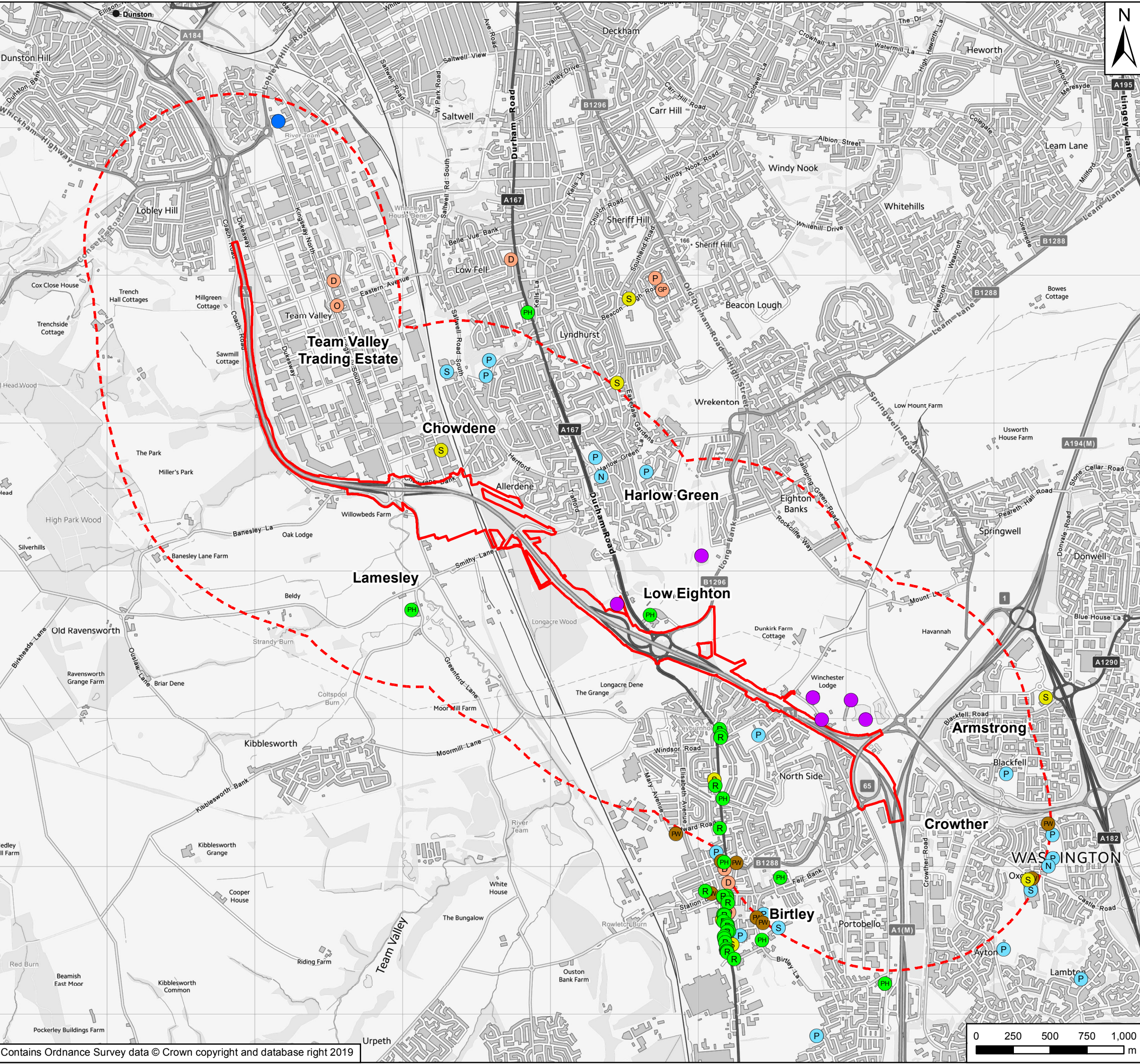
**The Infrastructure Planning
(Applications: Prescribed Forms and
Procedures) Regulations 2009**

**A1 Birtley to Coal House
Development Consent Order 20[xx]**

**Environmental Statement -
Figures**

Regulation Reference:	APFP Regulation 5(2)(a)
Planning Inspectorate Scheme Reference	TR010031
Application Document Reference	TR010031/APP/6.2
Author:	A1 Birtley to Coal House Project Team, Highways England

Version	Date	Status of Version
Rev 0	14 August 2019	Application Issue



Key

- Scheme Footprint
- 1km Study Area

Community Facilities

- N Nursery
- P Primary School
- S Secondary School
- GP Doctor's Surgery
- D Dentist
- O Optician
- P Pharmacy
- PW Church
- R Restaurants
- PH Public House
- Sports and Fitness
- S Convenience Store
- Tourism and Recreation

Revision Table

Rev	Date	Description	By	Chk'd	App'd
P01	Jul 2019	First Issue	GH	JD	NJA

Client

Project Title
A1 Birtley to Coal House Scheme

Drawing Title
Figure 12.2 Community and Associated Facilities

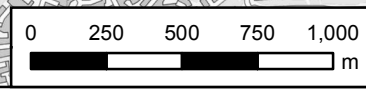
Scale	Drawn	Checked	Approved	Authorised
1:25,000	GH	JD	KS	NJA

Original Size	Date	Date	Date	Date
A3	Jul 2019	Jul 2019	Jul 2019	Jul 2019

Drawing Number	Originator	Volume	Revision
HE551462	WSP	6.2	P01

B2CH

Section	Type	ID	Direction	Type	Role	Number



If you need help accessing this or any other Highways England information, please call **0300 470 4580** and we will help you.

© Crown copyright 2019.

You may re-use this information (not including logos) free of charge in any format or medium, under the terms of the Open Government Licence. To view this licence:

visit www.nationalarchives.gov.uk/doc/open-government-licence/

write to the **Information Policy Team, The National Archives,**

Kew, London TW9 4DU, or email

psi@nationalarchives.gsi.gov.uk.

This document is also available on our website at www.gov.uk/highways

If you have any enquiries about this document A1BirtleytoCoalhouse@highwaysengland.co.uk or call **0300 470 4580***.

*Calls to 03 numbers cost no more than a national rate call to an 01 or 02 number and must count towards any inclusive minutes in the same way as 01 and 02 calls.

These rules apply to calls from any type of line including mobile, BT, other fixed line or payphone. Calls may be recorded or monitored.

Registered office Bridge House, 1 Walnut Tree Close, Guildford GU1 4LZ
Highways England Company Limited registered in England and Wales number 09346363