

**From:** [James Adler](#)  
**To:** [M25 Junction 10](#)  
**Subject:** Department of Transport Letter 27 November 2020  
**Date:** 30 November 2020 16:36:54  
**Attachments:** [~WRD163.jpg](#)  
[image003.png](#)  
**Importance:** High

---

Dear Ms Kopala,

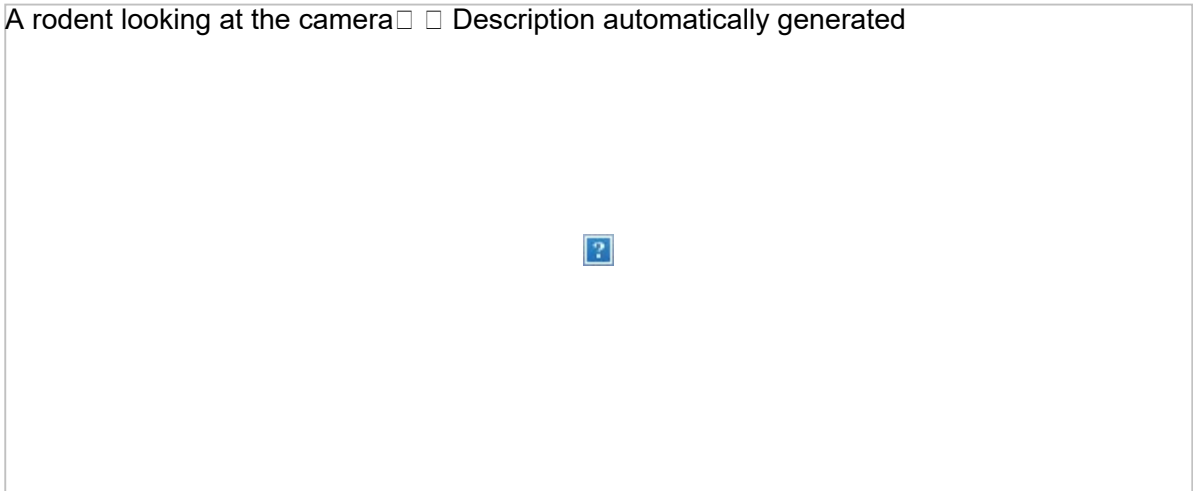
Thank you for your letter dated the 27<sup>th</sup> November 2020. As stated in our previous response we do not support a reduction in the Replacement Land area. As such our previous correspondence remains in place with no further comment.

All the best,

James

James Adler  
Director of Biodiversity (Surrey Wildlife Trust)  
Tel: [REDACTED]  
Email: [james.adler@surreywt.org.uk](mailto:james.adler@surreywt.org.uk)

A rodent looking at the camera   Description automatically generated



 Please consider the environment before printing this email

**Are you a member of Surrey Wildlife Trust?**

Help protect Surrey's wildlife by joining as a member or making a donation. Surrey Wildlife Trust cares for more than 9,000 hectares of the county's countryside and could not carry out vital conservation work without the support of members, supporters and volunteers. To join and to find out more about the benefits of SWT membership, visit [www.surreywildlifetrust.org/join](http://www.surreywildlifetrust.org/join).

This e-mail and any attachment is confidential and contains proprietary information, some or all of which may be legally privileged. It is intended solely for the use of the individual or entity to which it is addressed. If you are not the intended recipient, please notify the author immediately by telephone or by replying to this e-mail, and then delete all copies of

the e-mail on your system. If you are not the intended recipient, you must not use, disclose, distribute, copy, print or rely on this e-mail.

Whilst we have taken reasonable precautions to ensure that this e-mail and any attachment has been checked for viruses, we cannot guarantee that they are virus free and we cannot accept liability for any damage sustained as a result of software viruses. We would advise that you carry out your own virus checks, especially before opening an attachment.

Surrey Wildlife Trust Limited is a company limited by guarantee. Registered in England and Wales No. 645176. Registered Charity No. 208123. Charities Aid Foundation 'Give As You Earn' Registration No. 005805.



 Please consider the environment before printing this email

### **Are you a member of Surrey Wildlife Trust?**

Help protect Surrey's wildlife by joining as a member or making a donation. Surrey Wildlife Trust cares for more than 9,000 hectares of the county's countryside and could not carry out vital conservation work without the support of members, supporters and volunteers. To join and to find out more about the benefits of SWT membership, visit [www.surreywildlifetrust.org/join](http://www.surreywildlifetrust.org/join).

This e-mail and any attachment is confidential and contains proprietary information, some or all of which may be legally privileged. It is intended solely for the use of the individual or entity to which it is addressed. If you are not the intended recipient, please notify the author immediately by telephone or by replying to this e-mail, and then delete all copies of the e-mail on your system. If you are not the intended recipient, you must not use, disclose, distribute, copy, print or rely on this e-mail.

Whilst we have taken reasonable precautions to ensure that this e-mail and any attachment has been checked for viruses, we cannot guarantee that they are virus free and we cannot accept liability for any damage sustained as a result of software viruses. We would advise that you carry out your own virus checks, especially before opening an attachment.

Surrey Wildlife Trust Limited is a company limited by guarantee. Registered in England and Wales No. 645176. Registered Charity No. 208123. Charities Aid Foundation 'Give As You Earn' Registration No. 005805.