

**A30 Chiverton to Carland Cross
TR010026**

**STATEMENT TO INFORM AN
APPROPRIATE ASSESSMENT
APPENDIX 9 MARSH FRITILLARY
HABITAT**

Planning Act 2008

APFP Regulation 5(2)(g)
Infrastructure Planning (Applications: Prescribed
Forms and Procedure) Regulations 2009

Volume 6

August 2018

Infrastructure Planning

Planning Act 2008

**The Infrastructure Planning
(Applications: Prescribed Forms and
Procedure) Regulations 2009**

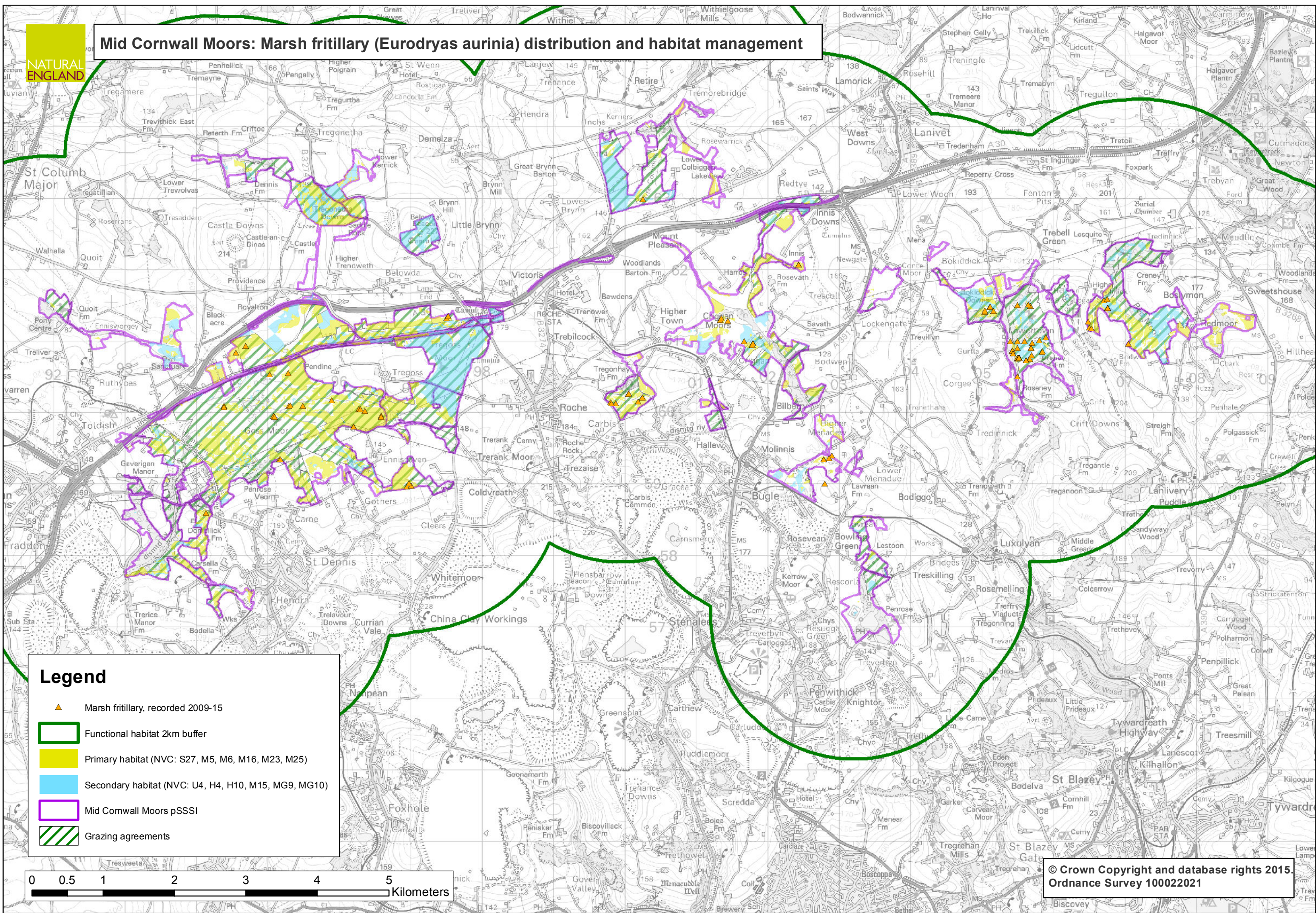
**A30 Chiverton to Carland Cross
Development Consent Order 201[x]**

**STATEMENT TO INFORM AN APPROPRIATE ASSESSMENT
APPENDIX 9 MARSH FRITILLARY HABITAT**

Regulation Number:	Regulation 5(2)(g)
Planning Inspectorate Scheme Reference	TR010026
Application Document Reference	6.5
Author:	A30 Chiverton to Carland Cross Project Team, Highways England

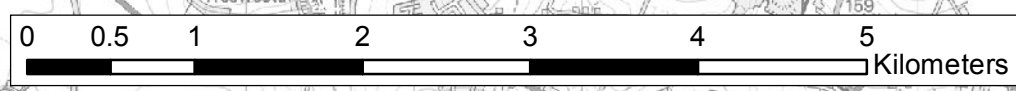
Version	Date	Status of Version
C01	August 2018	Application Issue

Mid Cornwall Moors: Marsh fritillary (*Eurodryas aurinia*) distribution and habitat management



Legend

- ▲ Marsh fritillary, recorded 2009-15
- Functional habitat 2km buffer
- Primary habitat (NVC: S27, M5, M6, M16, M23, M25)
- Secondary habitat (NVC: U4, H4, H10, M15, MG9, MG10)
- Mid Cornwall Moors pSSSI
- Grazing agreements



If you need help accessing this or any other Highways England information, please call **0300 123 5000** and we will help you.