

# **A30 Chiverton to Carland Cross Environmental Statement**

**Volume 6 Document Ref 6.4 ES Appendix 12.6  
World heritage site areas**

**HA551502-ARP-ENM-SW-RP-LE-000021**

**C01 | A3**

**22/08/18**

Planning Act 2008  
Infrastructure Planning (Applications: Prescribed Forms and Procedure)  
Regulations 2009 (as amended)  
APFP Regulation 5(2)(a)



## Table of Contents

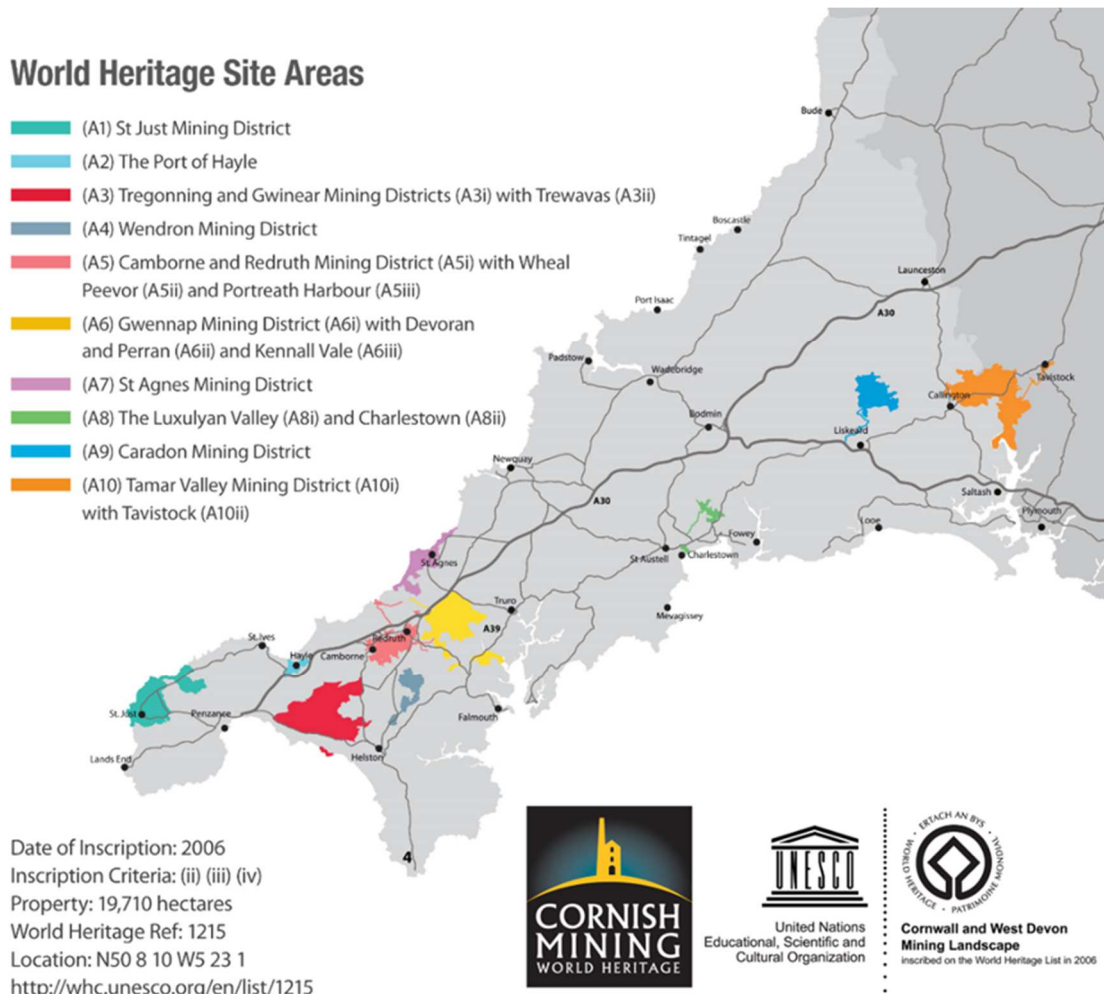
	Pages
12.6 World Heritage Site Areas	i
<b>Table of Figures</b>	
Figure 12 6 World Heritage Site Areas	i

## 12.6 World Heritage Site Areas

12.6.1 A list of those World Heritage Site (WHS) Areas which could experience impacts (suggested by Cornwall Council to be principally beneficial as a result of the scheme) has been put forward by Cornwall Council, as follows:

- Within the Order Limits - Gwennap (WHS Area 6);
- Outside and within 5km the Order Limits – St Agnes (WHS Area 7); and
- Further afield (West) – Camborne/Redruth and Hayle (Areas 5 and 2).

12.6.2 These are shown in Figure 12-6.



Insert fig in this box to align to the left margin

ure

(source: Cornwall Council/World Heritage Site Office)

**Figure 12-6 World Heritage Site Areas**

If you need help accessing this or any other Highways England information, please call **0300 123 5000** and we will help you.

