

The Lake Lothing (Lowestoft) Third Crossing Order 201[*]



Lake Lothing
**THIRD
CROSSING**

Document SCC/LLTC/EX/142: Engineering Sections Drawings, Plans and Elevations - Mainline (Sheet 1 of 2)

Planning Act 2008

**The Infrastructure Planning (Applications: Prescribed Forms and Procedure)
Regulations 2009**

The Infrastructure Planning (Examination Procedure) Rule 2010

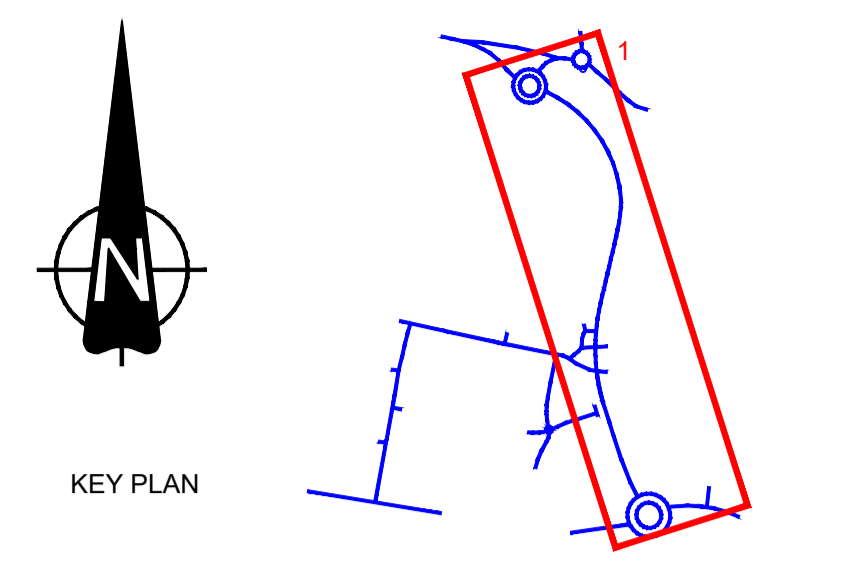
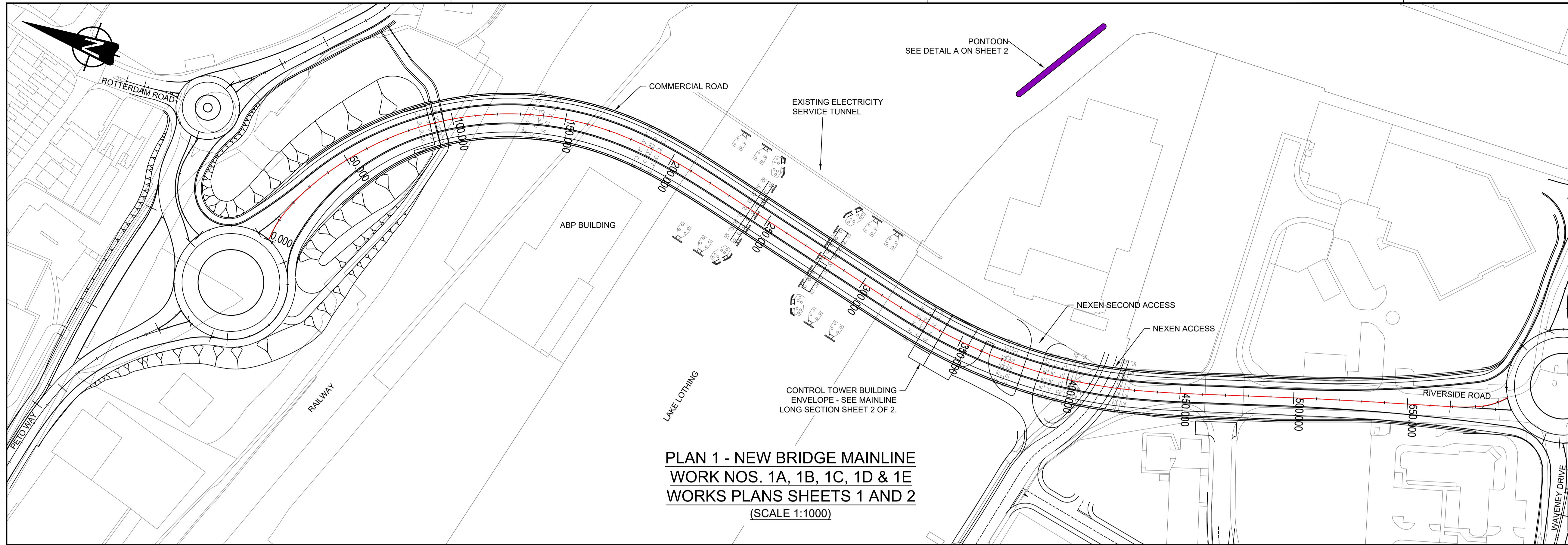
PINS Reference Number: TR010023

Author: Suffolk County Council

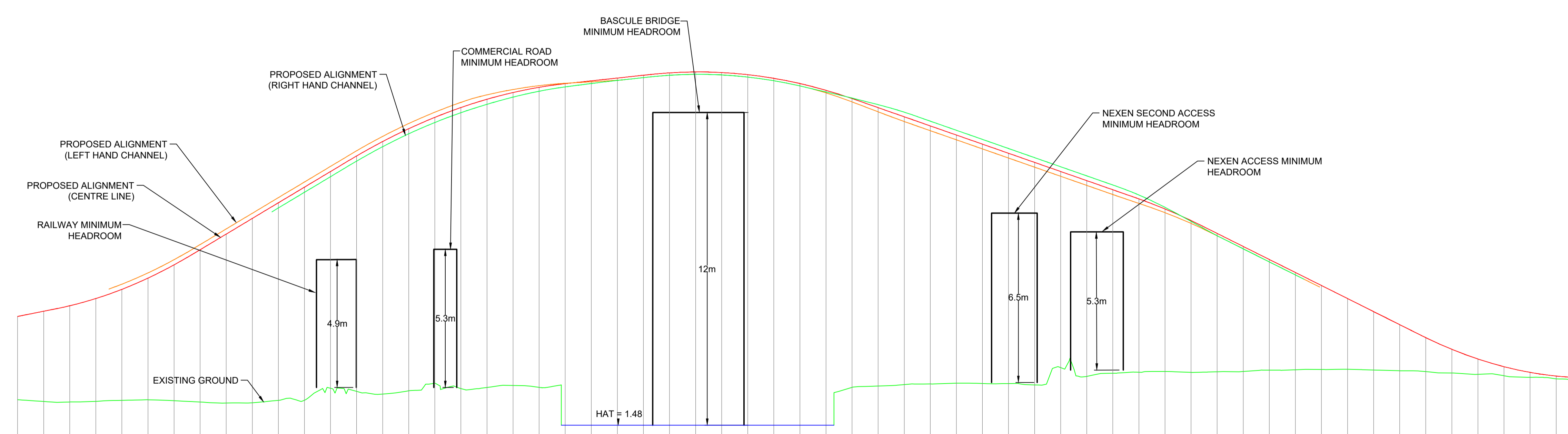
Document Reference: SCC/LLTC/EX/142

Date: May 2019

This page is intentionally left blank



- KEY**
- NOTES**
- ALL DIMENSIONS ARE IN METRES UNLESS OTHERWISE STATED
 - THESE ENGINEERING SECTION DRAWINGS AND PLANS SHOULD BE READ IN CONJUNCTION WITH THE KEY PLAN AND ALONGSIDE OTHER PLANS AND DOCUMENTS IN THE DEVELOPMENT CONSENT ORDER APPLICATION, IN PARTICULAR THE WORKS PLANS AND SCHEDULE 1 (AUTHORISED DEVELOPMENT) TO THE DEVELOPMENT CONSENT ORDER.
 - WORK NO. REFERENCES ARE DETAILED IN SCHEDULE 1 (AUTHORISED DEVELOPMENT) TO THE DEVELOPMENT CONSENT ORDER.
 - THE DESIGN SHOWN ON THESE ENGINEERING SECTION DRAWINGS AND PLANS IS ILLUSTRATIVE AND WILL BE SUBJECT TO DETAILED DESIGN DEVELOPMENT; ANY CHANGES WILL BE LIMITED TO BEING WITHIN THE ORDER LIMITS AND ANY OTHER CONSTRAINTS INCLUDED IN THE DEVELOPMENT CONSENT ORDER.



Proposed Alignment	Stationing (0+000 to 580+000)																												
Gradient	Values ranging from 2.000 to -0.828																												
Existing Level	Values ranging from 2.981 to 3.251																												
Horizontal	Geometric data including radii (e.g., R=45,000m) and lengths (e.g., L=15,176m)																												
Vertical	Vertical curve data including grades (e.g., G=2.000) and lengths (e.g., L=150,000m)																												
Superelevation	Cross-slopes (e.g., S=5.000, S=0.482%)																												
Chainage	Stationing from 0+000 to 580+000																												

**C19 VERTICAL ALIGNMENT
WORK NOS. 1A, 1B, 1C, 1D & 1E
WORKS PLANS SHEETS 1 AND 2
(SCALE 1:1000 HORIZONTAL, 1:100 VERTICAL)**

Mapping reproduced by permission of Ordnance Survey on behalf of HMSO.
© Crown copyright and database rights 2017. All rights reserved.
Ordnance Survey licence number 100023395
Contains OS data © Crown copyright and database rights 2017.

P01	HAF	PC	PC	26/04/2019
FOR DCO EXAMINATION - DEADLINE 9				
P00	JC	PC	PC	08/06/2018
FOR DCO SUBMISSION				
REVISION	DRAWN	CHECKED	APPROVED	DATE



PROJECT TITLE
Lake Lothing
THIRD CROSSING

DRAWING TITLE
ENGINEERING SECTION DRAWINGS
AND PLANS
MAINLINE
REGULATIONS 5(2)(o), 5(2)(p) AND 6(2)(a)
SHEET 1 OF 2

DRAWING STATUS
FOR DCO EXAMINATION

DRAWN	JC	CHECKED	PC	APPROVED	PC	AUTHORISED	JB	SUITABILITY	S4
SCALE @ A1 SIZE		DATE		REVISION					
AS SHOWN		26/04/2019		P01					
DRAWING NUMBER			Project	Originator	Volume				
1069948-WSP-HML-LL-DR-CH-0201									
Location	Type	Role	Number						