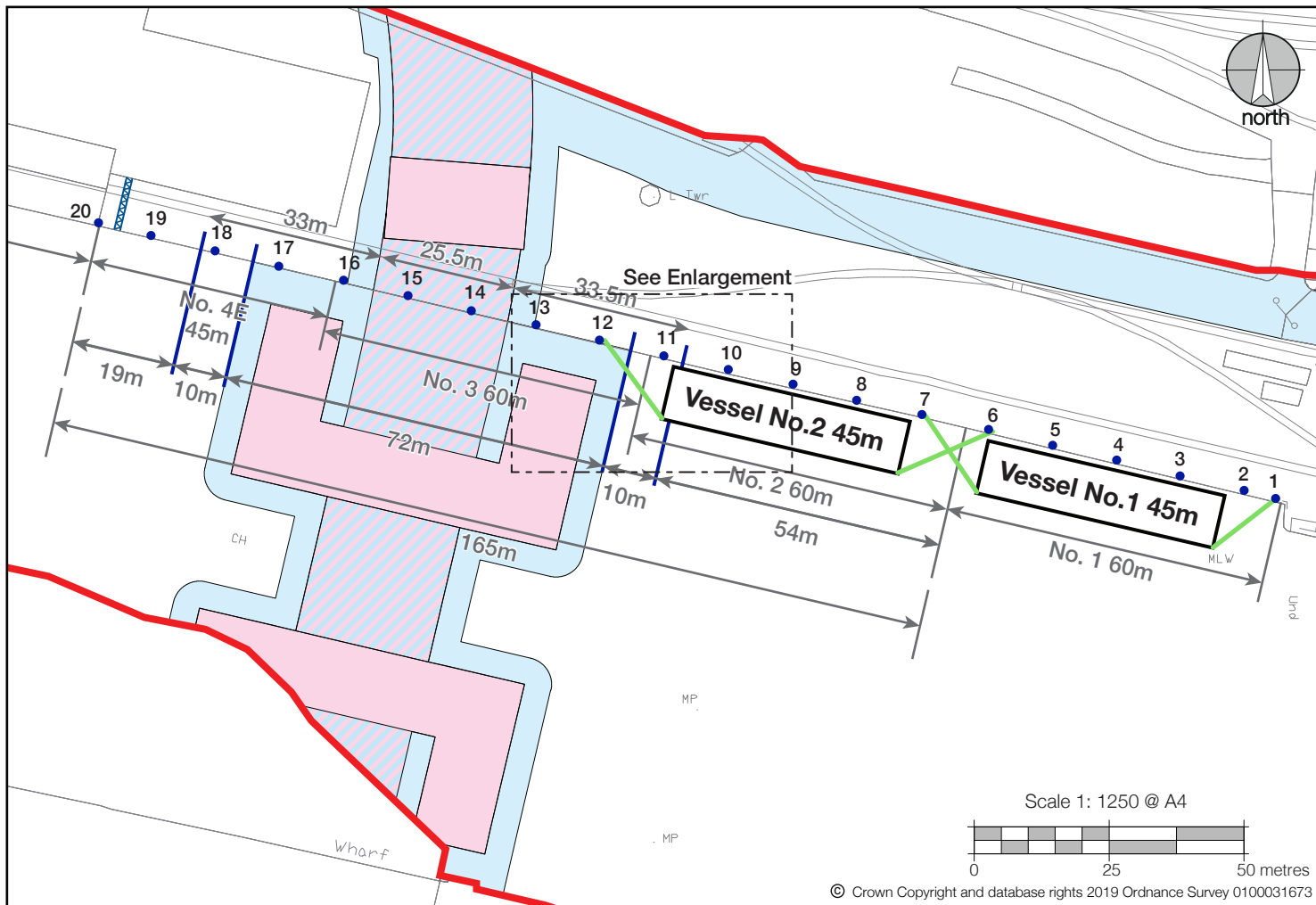
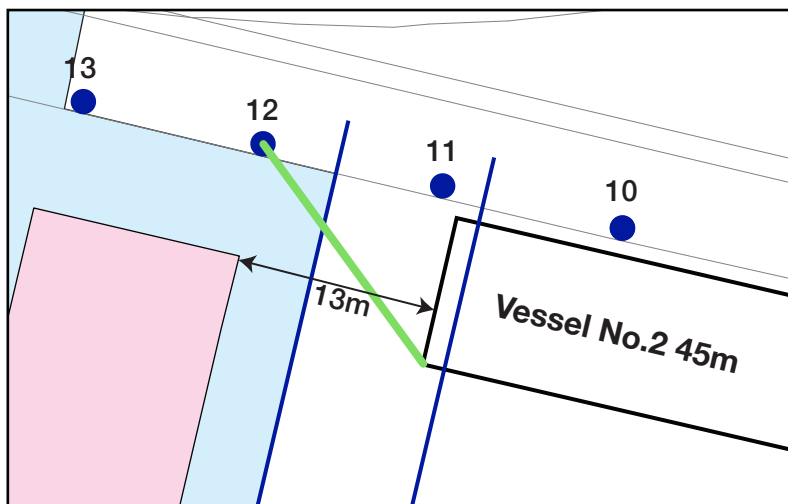


# Scenario 4 - Two 45m vessels



- ABP land ownership boundary
- Permanent acquisition of land
- Permanent acquisition of airspace and rights over land
- Permanent acquisition of rights over land
- Port Berth (inc berth number and length)
- Allowance for manoeuvring vessel
- Security fence
- Bollard
- Rope line

## Enlargement



## Scenario 4

This scenario shows two 45m LOA vessels moored at North Quay berths No.1 and No.2.

Vessel 2 will come in close proximity to the bridge whilst manoeuvring to the berth. This may not be considered a viable option to safely manoeuvre into this berth space for certain vessels or in adverse weather conditions

Berth 4E unusable