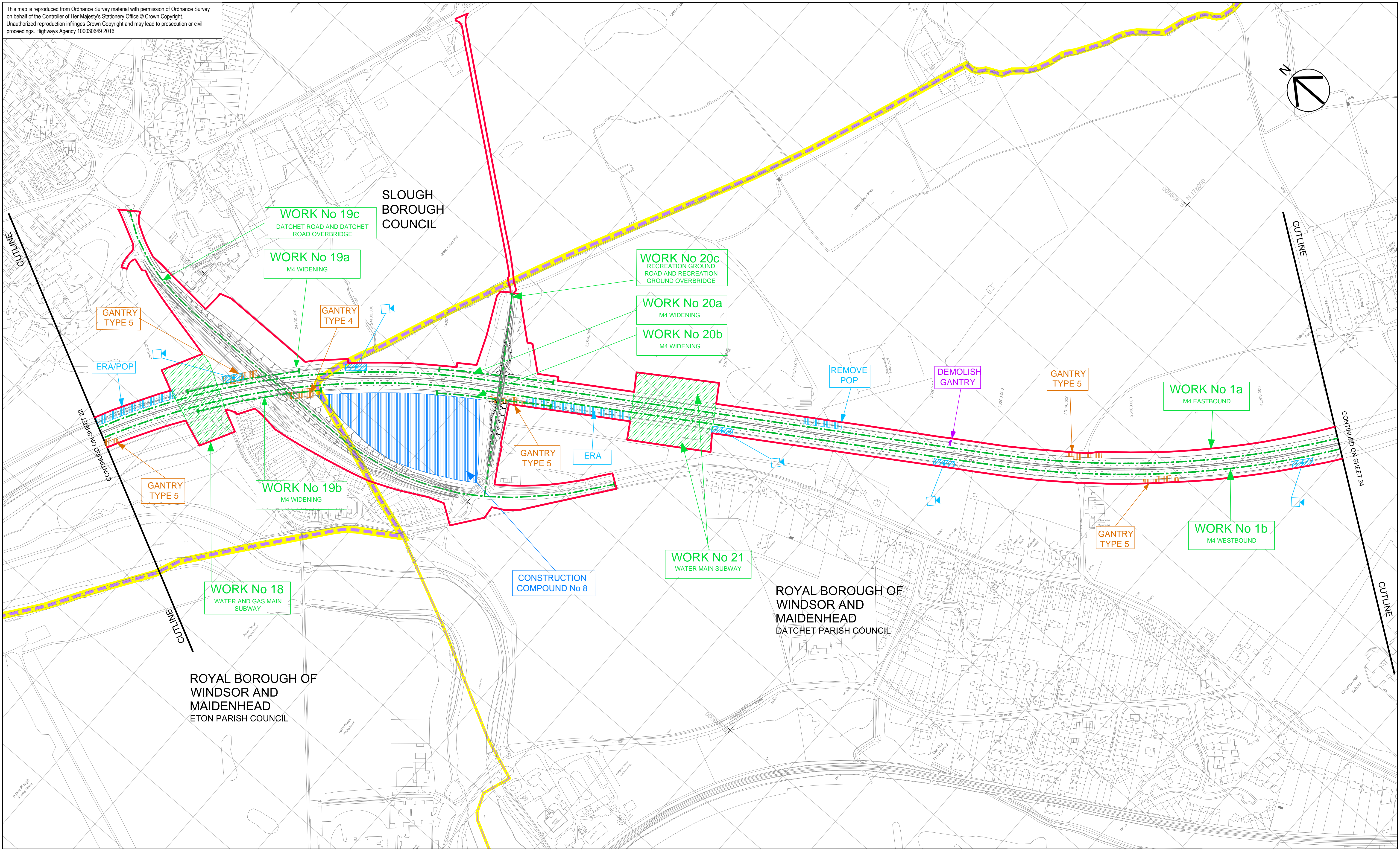


This map is reproduced from Ordnance Survey material with permission of Ordnance Survey on behalf of the Controller of Her Majesty's Stationery Office © Crown Copyright. Unauthorized reproduction infringes Crown Copyright and may lead to prosecution or civil proceedings. Highways Agency 100030649 2016



4F	05/02/2016	CCTV provision updated following high level survey results	LE	RR	GM	SW
3F	08/01/2016	UPDATED FOR DCO DEADLINE V SUBMISSION	LE	RR	GM	SW
2F	20/03/2015	SUBMITTED WITH DCO APPLICATION	LE	RR	GM	SW
1R	06/03/2015	ISSUED FOR REVIEW	LE	RR	GM	SW
D	29/01/2015	ORIGINAL	LE	RR	GM	SW
Rev #	Revision Date	Revision Details	Drawn	Check	Review	Appr'd

NOTES

- Works are described within Schedule 1 of the Development Consent Order
- Engineering Sections are included on drawing TR010019 - 2.5

KEY PLAN

LEGEND:

- Order limits
- Parish boundary
- Local authority boundary
- Linear Work Item Centreline
- Non-linear Work Boundary
- Limit Of Scheduled Work
- Construction Compounds

Items Included In Numbered Work Items

GANTRY	Proposed New Gantry Area	RE-USED GANTRY	Re-used Gantry
TYPE 1	Proposed New Gantry	TYPE 7	Portal Type Gantry
TYPE 2	Super-span Portal	TYPE 8	Signal Cantilever
TYPE 3	Single Carriageway Portal	ERA	Proposed Emergency Refuge Area (ERA)
TYPE 4	Super-span Cantilever	ERA/POP	Proposed ERA with Police Observation Platform (POP)
TYPE 5	Sign only Cantilever	SIGN	Proposed new CCTV Camera
TYPE 6	Signal Cantilever MS4		Post Mounted Sign in verge
DEMOLISH GANTRY	Signal Cantilever MS3		
	Existing Gantry to be demolished		

Engineering Section (arrows indicate direction of view - refer to Note 2)

URS

mouchel

Halcrow Hyder

highways england

Highways England
Major Projects
Piccadilly Gate
Stone Street
Manchester
M1 2WD

Alliance Document Reference
514451-MUH-ML-ZZ-DR-WP-301310

Rev 4F Scale at A1 1:2500

Job Title **M4 JUNCTIONS 3 TO 12 SMART MOTORWAY**

Drawing Title **WORKS PLAN REGULATIONS 5(2)(j) & 5(2)(p) SHEET 23 OF 31 MYRKE**

Drawing Number **TR010019 - 2.3**