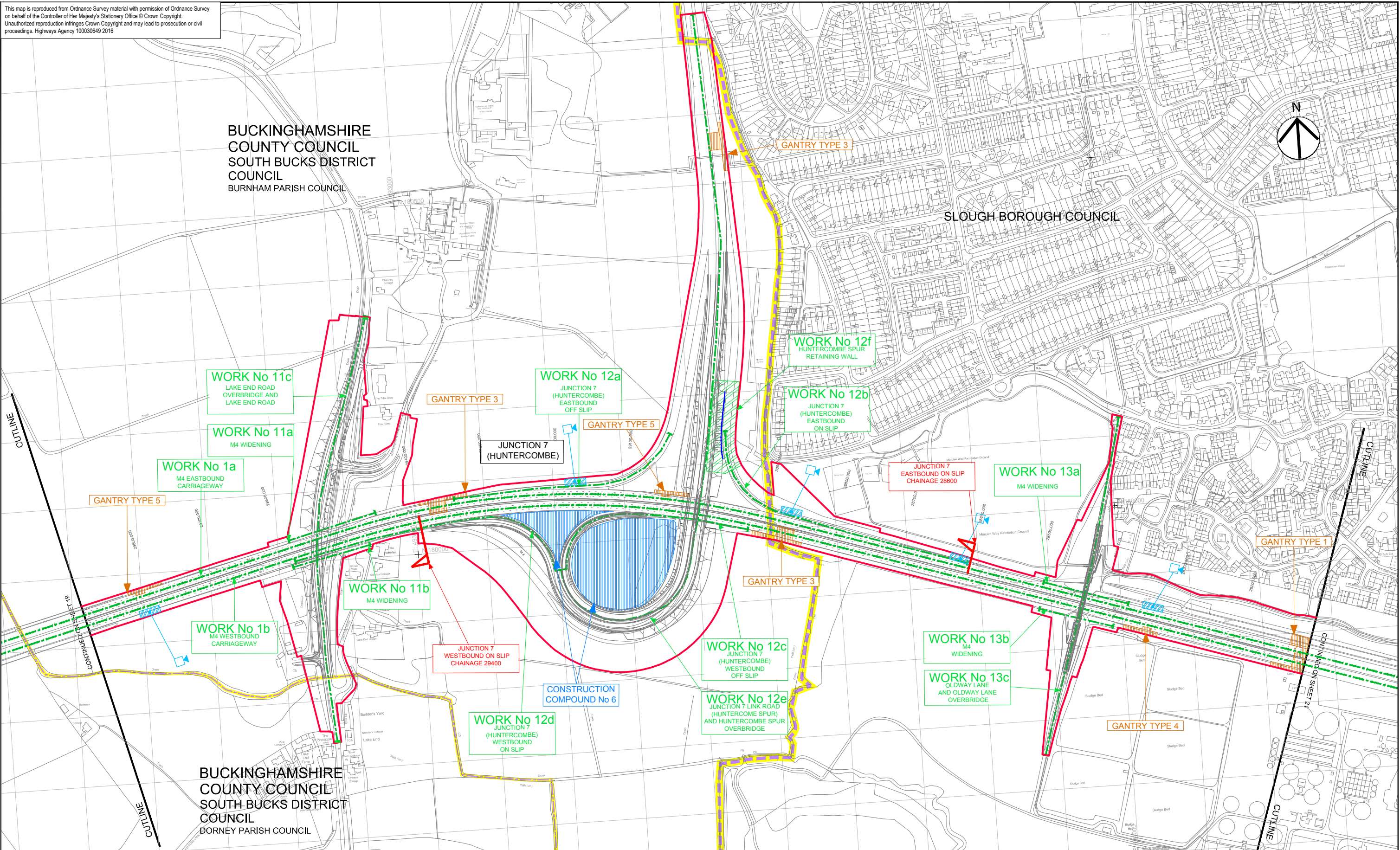


This map is reproduced from Ordnance Survey material with permission of Ordnance Survey on behalf of the Controller of Her Majesty's Stationery Office © Crown Copyright. Unauthorized reproduction infringes Crown Copyright and may lead to prosecution or civil proceedings. Highways Agency 100030649 2016

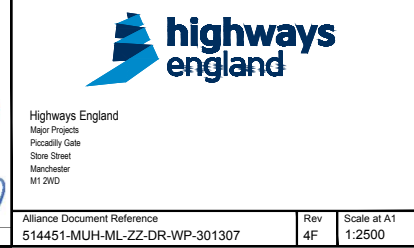
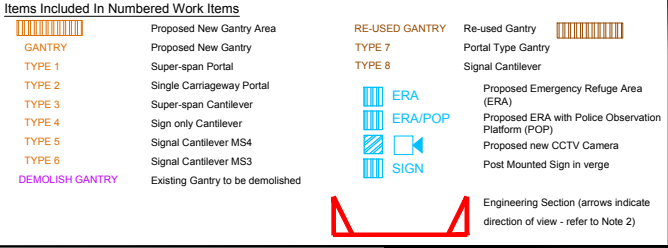
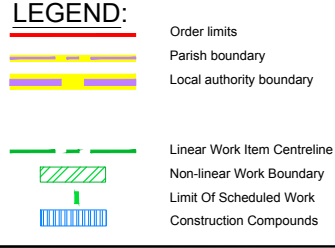
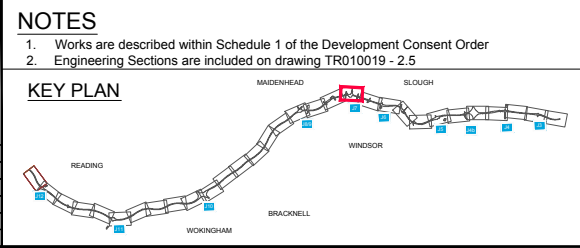
BUCKINGHAMSHIRE
COUNTY COUNCIL
SOUTH BUCKS DISTRICT
COUNCIL
BURNHAM PARISH COUNCIL

SLOUGH BOROUGH COUNCIL

BUCKINGHAMSHIRE
COUNTY COUNCIL
SOUTH BUCKS DISTRICT
COUNCIL
DORNEY PARISH COUNCIL



4F	05/02/2016	CCTV provision updated following high level survey results	LE	RR	GM	BIV
3F	08/01/2016	UPDATED FOR DCO DEADLINE V SUBMISSION	LE	RR	GM	BIV
2F	20/03/2015	SUBMITTED WITH DCO APPLICATION	LE	RR	GM	BIV
1R	06/03/2015	ISSUED FOR REVIEW	LE	RR	GM	BIV
D	29/01/2015	ORIGINAL	LE	RR	GM	BIV
Rev #	Revision Date	Revision Details	Drawn	Check	Review	App'd



Job Title	M4 JUNCTIONS 3 TO 12 SMART MOTORWAY
Drawing Title	WORKS PLAN REGULATIONS 5(2)(j) & 5(2)(p) SHEET 20 OF 31 CIPPENHAM
Drawing Number	TR010019 - 2.3

Alliance Document Reference	514451-MUH-ML-ZZ-DR-WP-301307
Rev	4F
Scale at A1	1:2500