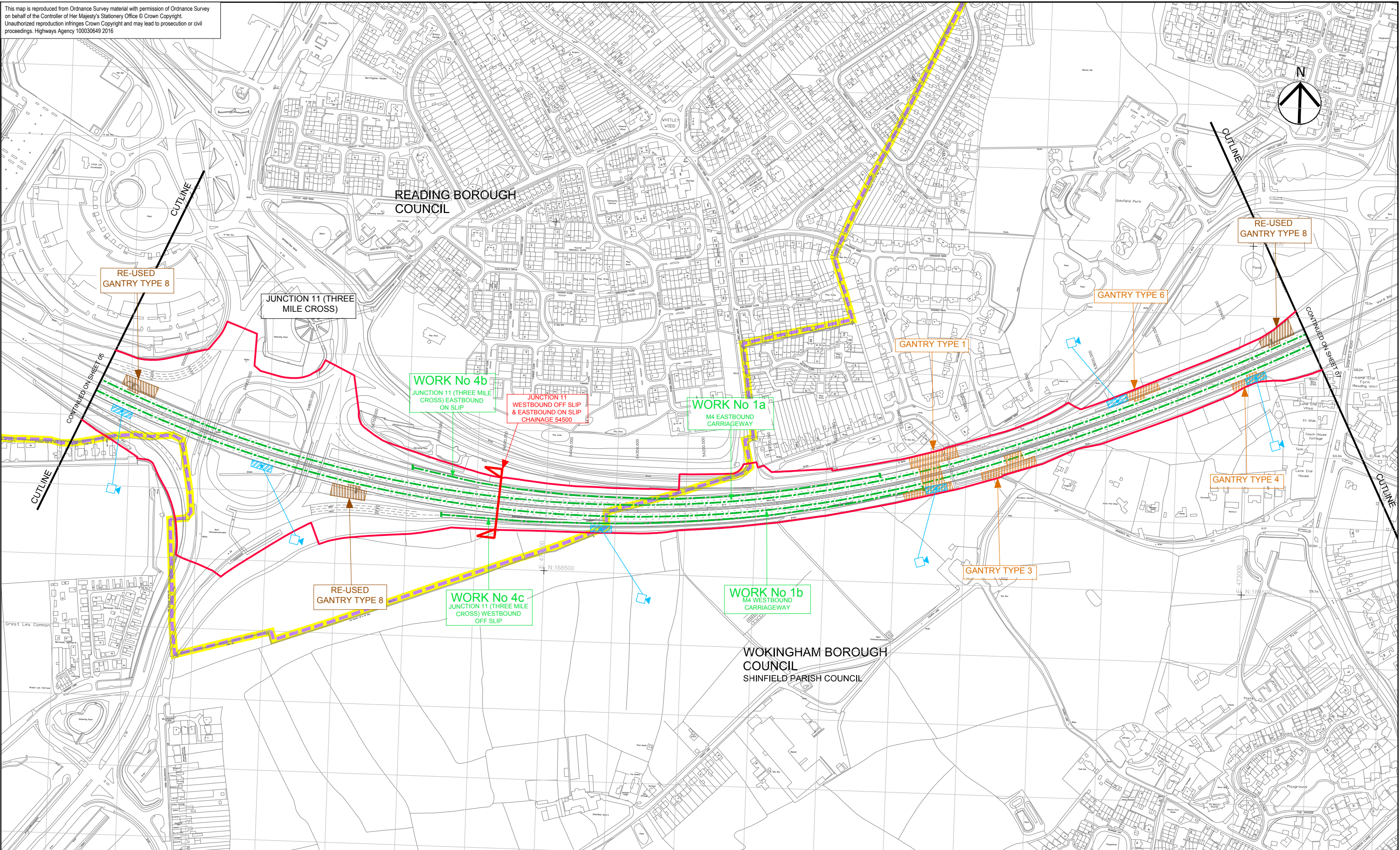
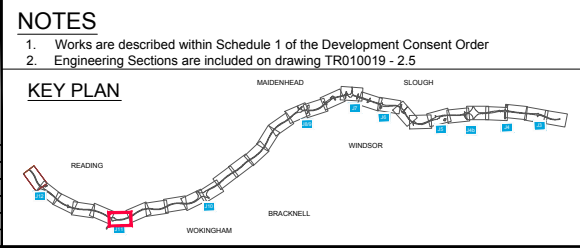


This map is reproduced from Ordnance Survey material with permission of Ordnance Survey on behalf of the Controller of Her Majesty's Stationery Office © Crown Copyright. Unauthorized reproduction infringes Crown Copyright and may lead to prosecution or civil proceedings. Highways Agency 100030649 2016



4F	05/02/2016	CCTV provision updated following high level survey results	LE	RR	GM	BIV
3F	08/01/2016	UPDATED FOR DCO DEADLINE V SUBMISSION	LE	RR	GM	BIV
2F	20/03/2015	SUBMITTED WITH DCO APPLICATION	LE	RR	GM	BIV
1R	06/03/2015	ISSUED FOR REVIEW	LE	RR	GM	BIV
D	29/01/2015	ORIGINAL	LE	RR	GM	BIV
Rev #	Revision Date	Revision Details	Drawn	Check	Review	App'd



**LEGEND:**

- Order limits
- Parish boundary
- Local authority boundary
- Linear Work Item Centreline
- Non-linear Work Boundary
- Limit Of Scheduled Work
- Construction Compounds

**Items Included in Numbered Work Items**

- Proposed New Gantry Area
- Proposed New Gantry
- Super-span Portal
- Single Carriageway Portal
- Super-span Cantilever
- Sign only Cantilever
- Signal Cantilever MS4
- Signal Cantilever MS3
- Existing Gantry to be demolished

**RE-USED GANTRY**

- TYPE 7
- TYPE 8

**ERA/POP**

- ERA
- ERA/POP
- SIGN

**RE-USED GANTRY**

- Re-used Gantry
- Portal Type Gantry
- Signal Cantilever
- Proposed Emergency Refuge Area (ERA)
- Proposed ERA with Police Observation Platform (POP)
- Proposed new CCTV Camera
- Post Mounted Sign in verge

**Engineering Section** (arrows indicate direction of view - refer to Note 2)



**highways england**

Highways England  
Major Projects  
Pocality Gate  
Stone Street  
Manchester  
M1 2WD

Alliance Document Reference  
514451-MUH-ML-ZZ-DR-WP-301293

Rev 4F  
Scale at A1  
1:2500

Job Title	M4 JUNCTIONS 3 TO 12 SMART MOTORWAY
Drawing Title	WORKS PLAN REGULATIONS 5(2)(j) & 5(2)(p) SHEET 06 OF 31 WHITLEY
Drawing Number	TR010019 - 2.3