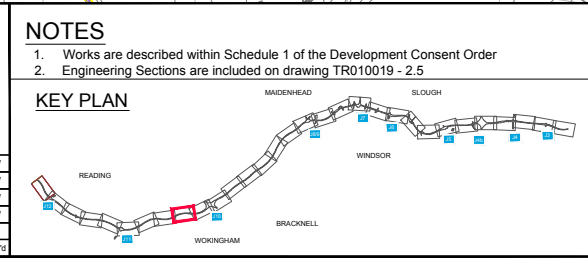


0	100	200
SCALE 1:2500		
Metres		

Rev #	Revision Date	Revision Details	Drawn	Check	Review	App'd
4F	05/02/2016	CCTV provision updated following high level survey results	LE	RR	GM	BIV
3F	08/01/2016	UPDATED FOR DCO DEADLINE V SUBMISSION	LE	RR	GM	BIV
2F	20/03/2015	SUBMITTED WITH DCO APPLICATION	LE	RR	GM	BIV
1R	04/03/2015	ISSUED FOR REVIEW	LE	RR	GM	BIV
D	29/01/2015	ORIGINAL	LE	RR	GM	BIV



LEGEND:

- Order limits
- Parish boundary
- Local authority boundary
- Linear Work Item Centreline
- Non-linear Work Boundary
- Limit Of Scheduled Work
- Construction Compounds

Items Included in Numbered Work Items

- Proposed New Gantry Area
- Proposed New Gantry
- Super-span Portal
- Single Carriageway Portal
- Super-span Cantilever
- Signal Cantilever
- Signal Cantilever MS4
- Signal Cantilever MS3
- Existing Gantry to be demolished

RE-USED GANTRY

- TYPE 7
- TYPE 8

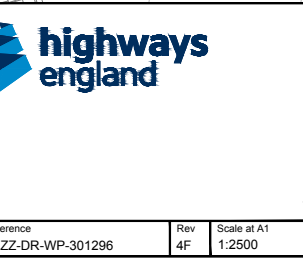
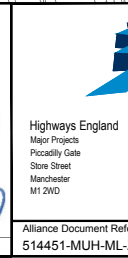
ERA/POP

- ERA
- ERA/POP
- SIGN

Demolish Gantry

- Demolish Gantry

Engineering Section (arrows indicate direction of view - refer to Note 2)



Alliance Document Reference
514451-MUH-ML-ZZ-DR-WP-301296

Rev 4F
Scale at A1
1:2500

Job Title
**M4 JUNCTIONS 3 TO 12
SMART MOTORWAY**

Drawing Title
**WORKS PLAN
REGULATIONS 5(2)(j) & 5(2)(p)
SHEET 09 OF 31
WINNERSH**

Drawing Number
TR010019 - 2.3