

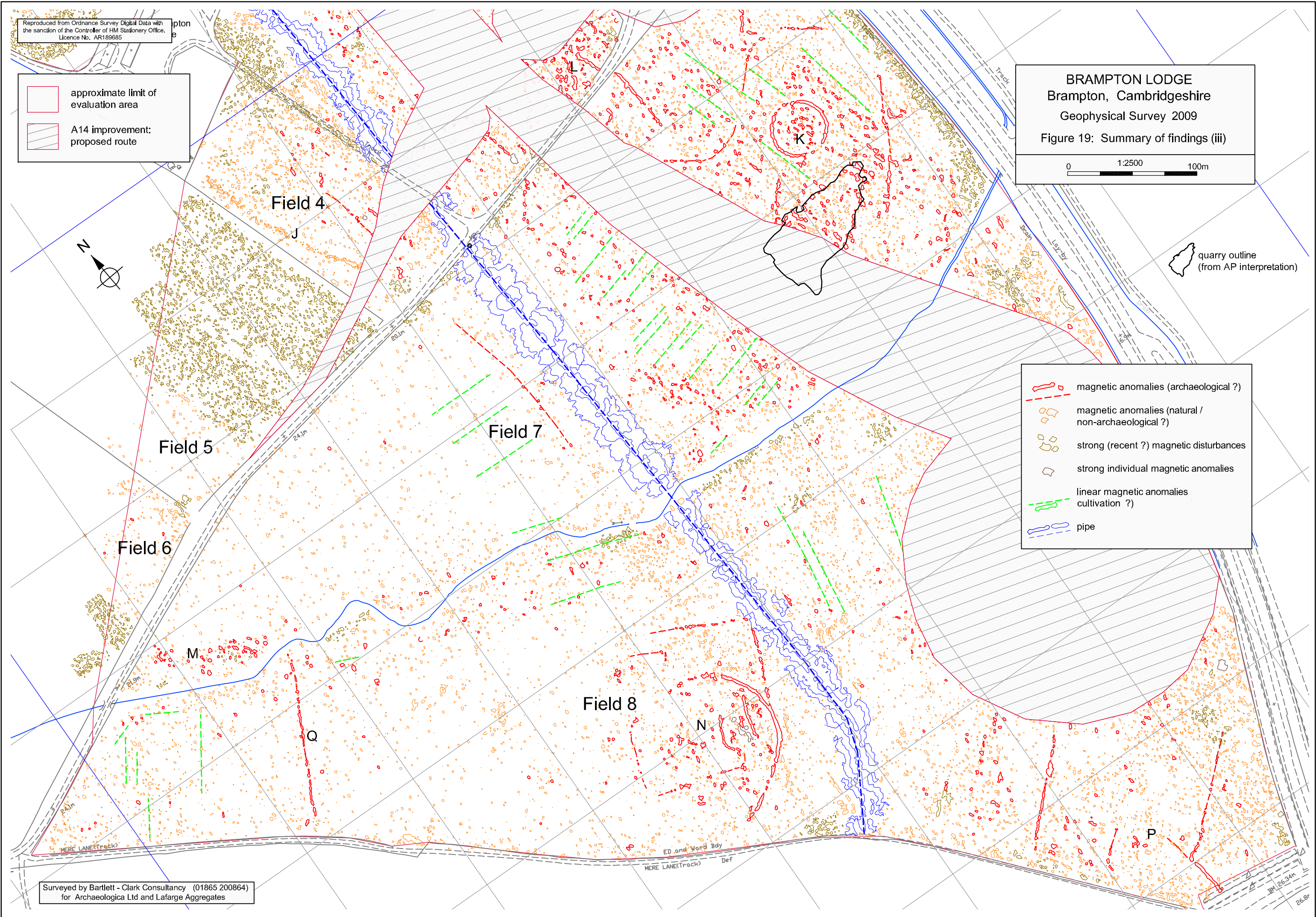
Reproduced from Ordnance Survey Digital Data with the sanction of the Controller of HM Stationery Office. Licence No. AR189685

- approximate limit of evaluation area
- A14 improvement: proposed route

BRAMPTON LODGE
Brampton, Cambridgeshire
Geophysical Survey 2009
Figure 19: Summary of findings (iii)

0 1:2500 100m

- magnetic anomalies (archaeological ?)
- magnetic anomalies (natural / non-archaeological ?)
- strong (recent ?) magnetic disturbances
- strong individual magnetic anomalies
- linear magnetic anomalies (cultivation ?)
- pipe



Surveyed by Bartlett - Clark Consultancy (01865 200864) for Archaeologica Ltd and Lafarge Aggregates