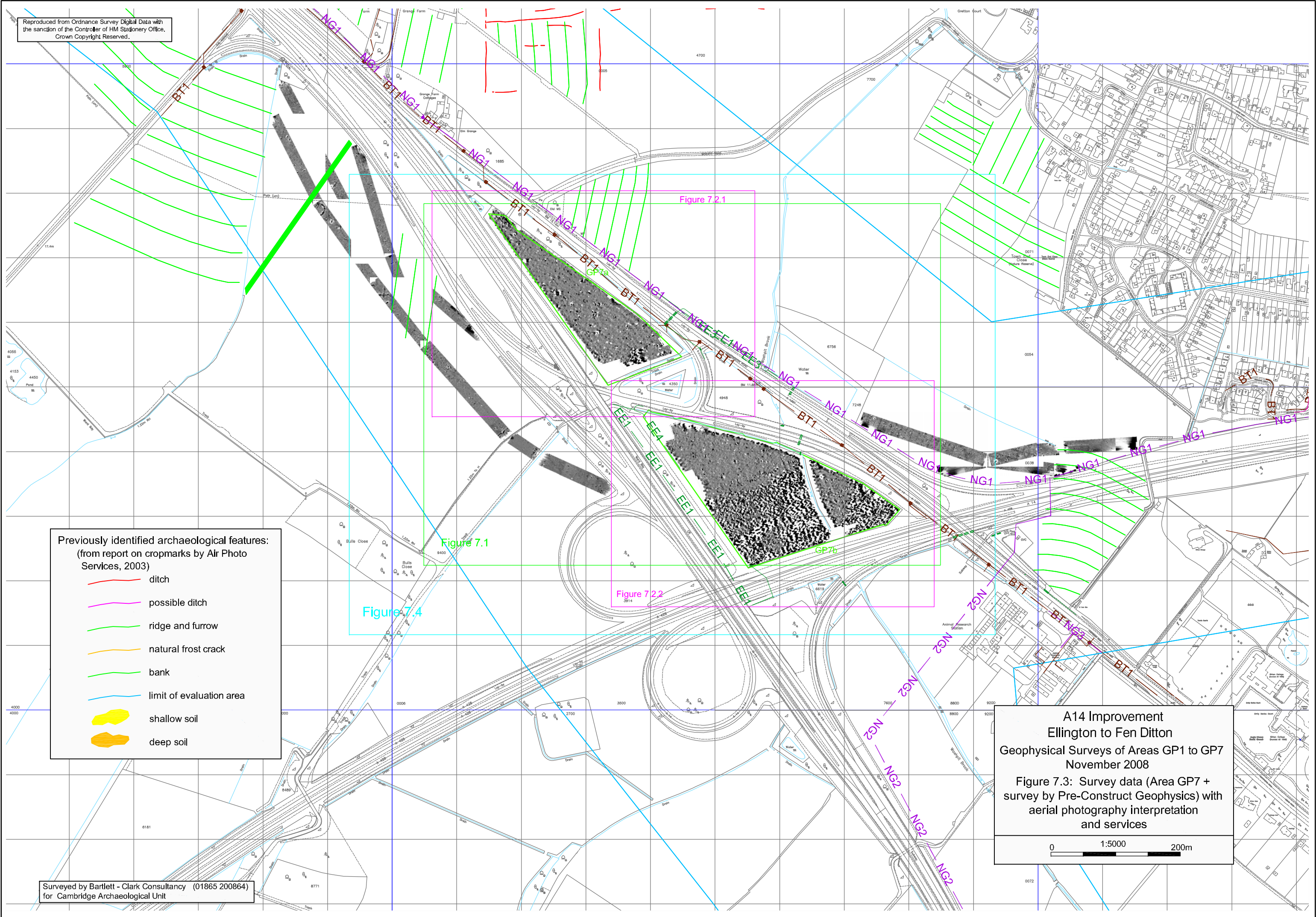


Reproduced from Ordnance Survey Digital Data with the sanction of the Controller of HM Stationery Office. Crown Copyright Reserved.



Previously identified archaeological features:  
(from report on cropmarks by Air Photo Services, 2003)

-  ditch
-  possible ditch
-  ridge and furrow
-  natural frost crack
-  bank
-  limit of evaluation area
-  shallow soil
-  deep soil

Figure 7.1

Figure 7.2.1

Figure 7.2.2

Figure 7.4

A14 Improvement  
Ellington to Fen Ditton  
Geophysical Surveys of Areas GP1 to GP7  
November 2008

Figure 7.3: Survey data (Area GP7 + survey by Pre-Construct Geophysics) with aerial photography interpretation and services

0 1:5000 200m

Surveyed by Bartlett - Clark Consultancy (01865 200864) for Cambridge Archaeological Unit