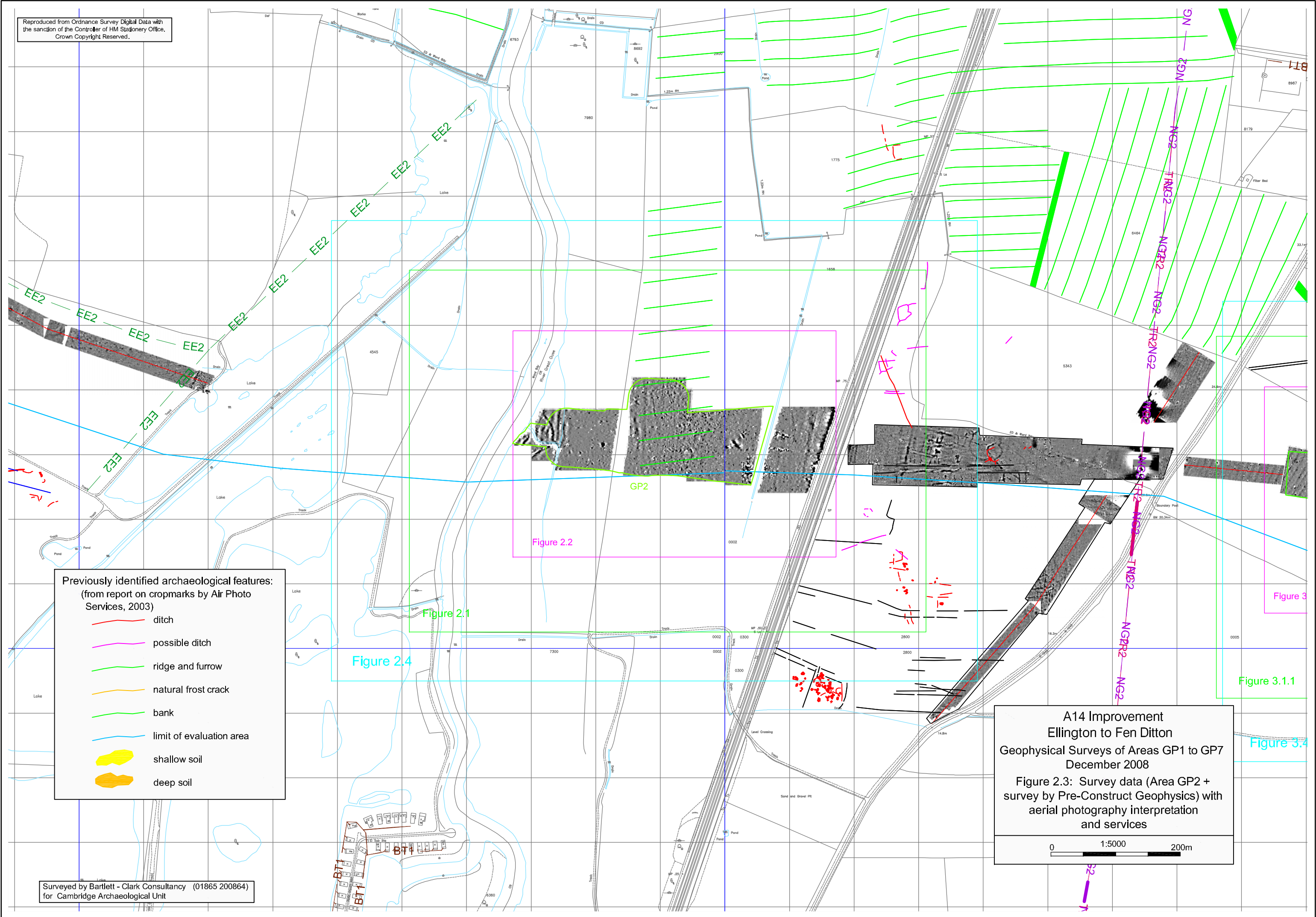


Reproduced from Ordnance Survey Digital Data with the sanction of the Controller of HM Stationery Office. Crown Copyright Reserved.



- Previously identified archaeological features:
(from report on cropmarks by Air Photo Services, 2003)
- ditch
 - possible ditch
 - ridge and furrow
 - natural frost crack
 - bank
 - limit of evaluation area
 - shallow soil
 - deep soil

A14 Improvement
Ellington to Fen Ditton
Geophysical Surveys of Areas GP1 to GP7
December 2008

Figure 2.3: Survey data (Area GP2 + survey by Pre-Construct Geophysics) with aerial photography interpretation and services

0 1:5000 200m

Surveyed by Bartlett - Clark Consultancy (01865 200864) for Cambridge Archaeological Unit

Figure 2.1

Figure 2.2

Figure 2.3

Figure 2.4

Figure 3

Figure 3.1.1

Figure 3.4