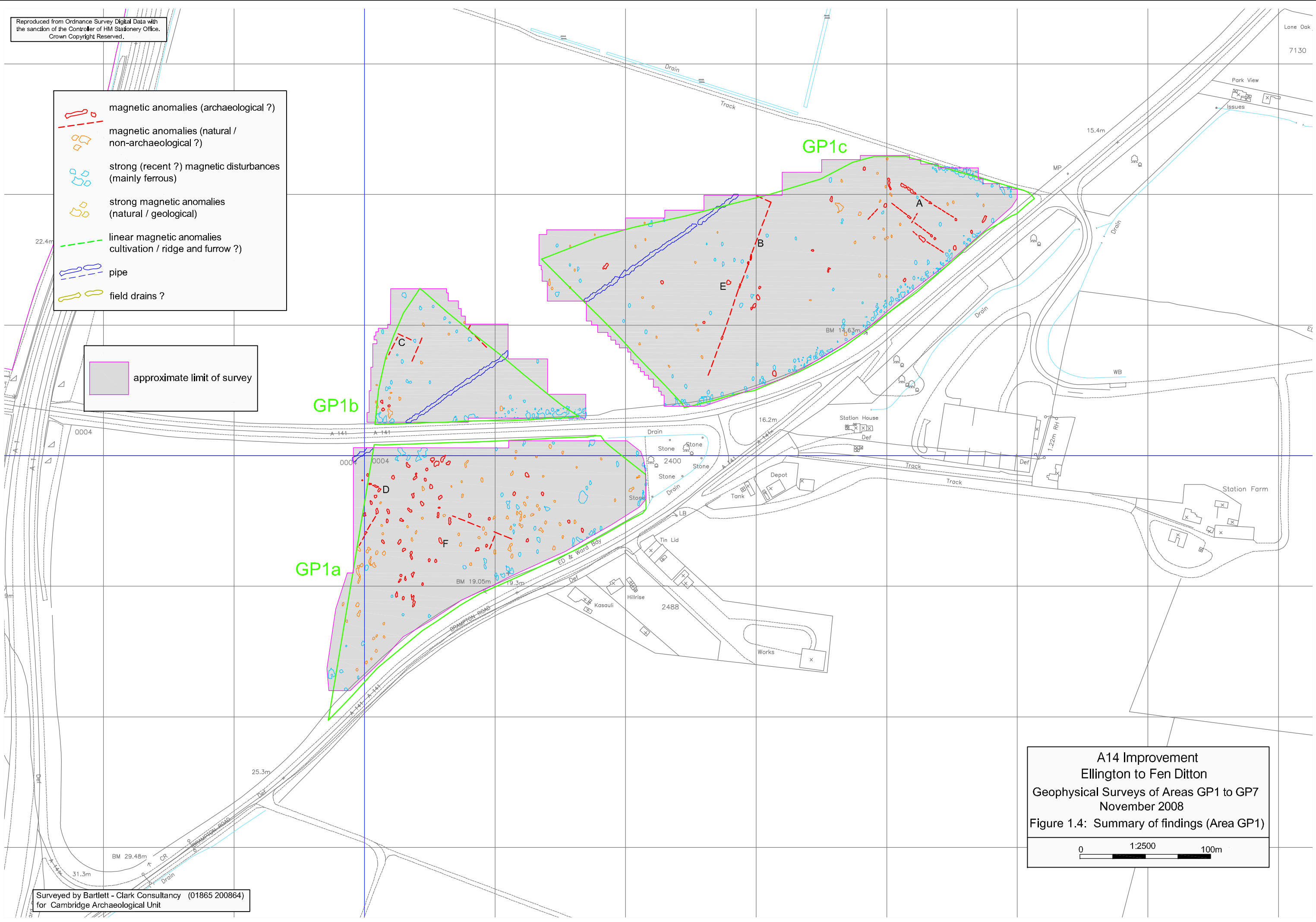


Reproduced from Ordnance Survey Digital Data with the sanction of the Controller of HM Stationery Office. Crown Copyright Reserved.

- magnetic anomalies (archaeological ?)
- magnetic anomalies (natural / non-archaeological ?)
- strong (recent ?) magnetic disturbances (mainly ferrous)
- strong magnetic anomalies (natural / geological)
- linear magnetic anomalies (cultivation / ridge and furrow ?)
- pipe
- field drains ?

approximate limit of survey



A14 Improvement
 Ellington to Fen Ditton
 Geophysical Surveys of Areas GP1 to GP7
 November 2008
 Figure 1.4: Summary of findings (Area GP1)

0 1:2500 100m

Surveyed by Bartlett - Clark Consultancy (01865 200864) for Cambridge Archaeological Unit