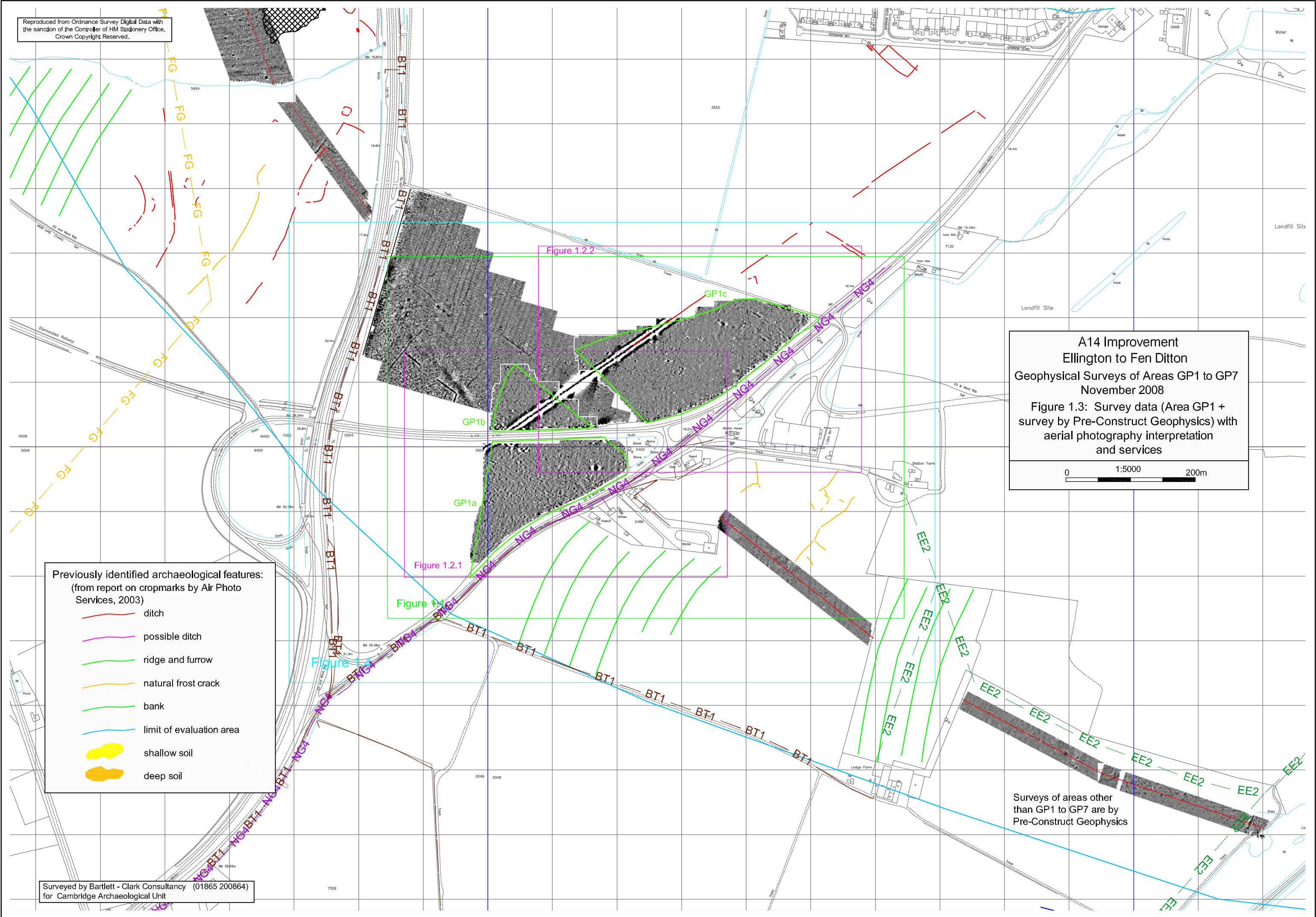


Reproduced from Ordnance Survey Digital Data with the sanction of the Controller of HM Stationery Office. Crown Copyright Reserved.



A14 Improvement  
 Ellington to Fen Ditton  
 Geophysical Surveys of Areas GP1 to GP7  
 November 2008  
 Figure 1.3: Survey data (Area GP1 +  
 survey by Pre-Construct Geophysics) with  
 aerial photography interpretation  
 and services  
 0 1:5000 200m

- Previously identified archaeological features:  
 (from report on cropmarks by Air Photo  
 Services, 2003)
- ditch
  - possible ditch
  - ridge and furrow
  - natural frost crack
  - bank
  - limit of evaluation area
  - shallow soil
  - deep soil

Surveys of areas other than GP1 to GP7 are by Pre-Construct Geophysics

Surveyed by Bartlett - Clark Consultancy (01865 200864)  
 for Cambridge Archaeological Unit