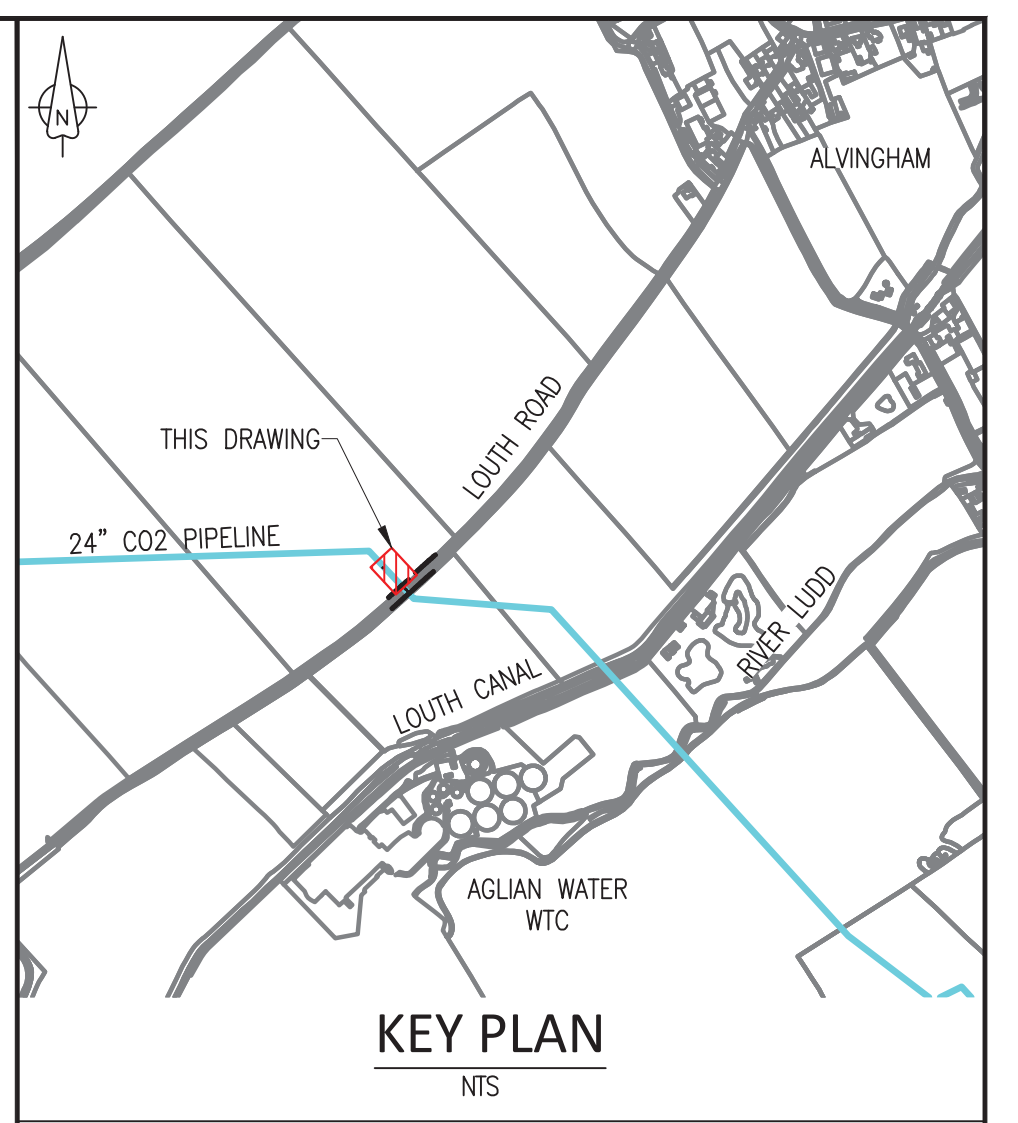
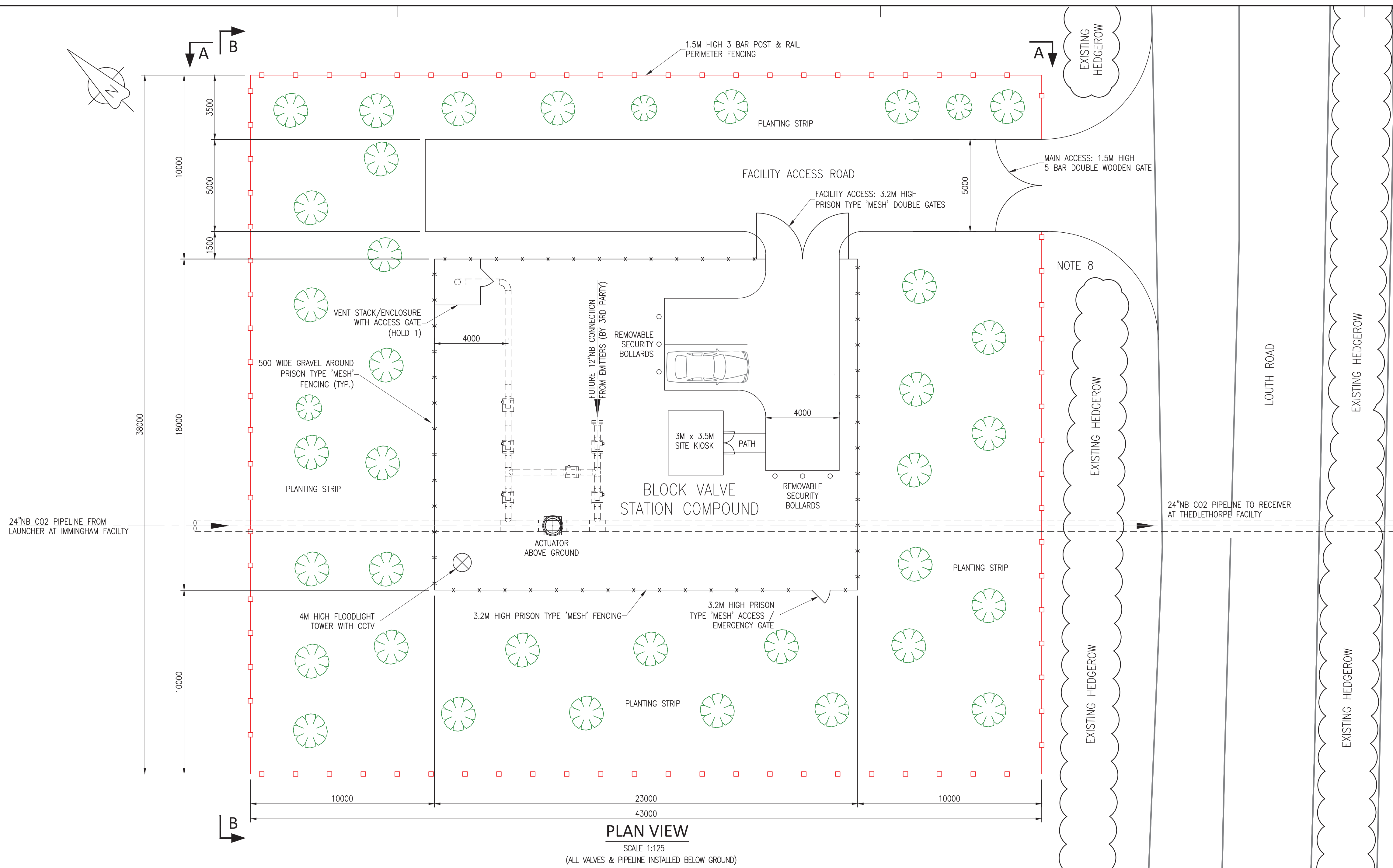


Viking CCS pipeline

4.16 Louth Road Block Valve Station Plan and Elevations

Document Reference: EN070008/APP/4.16

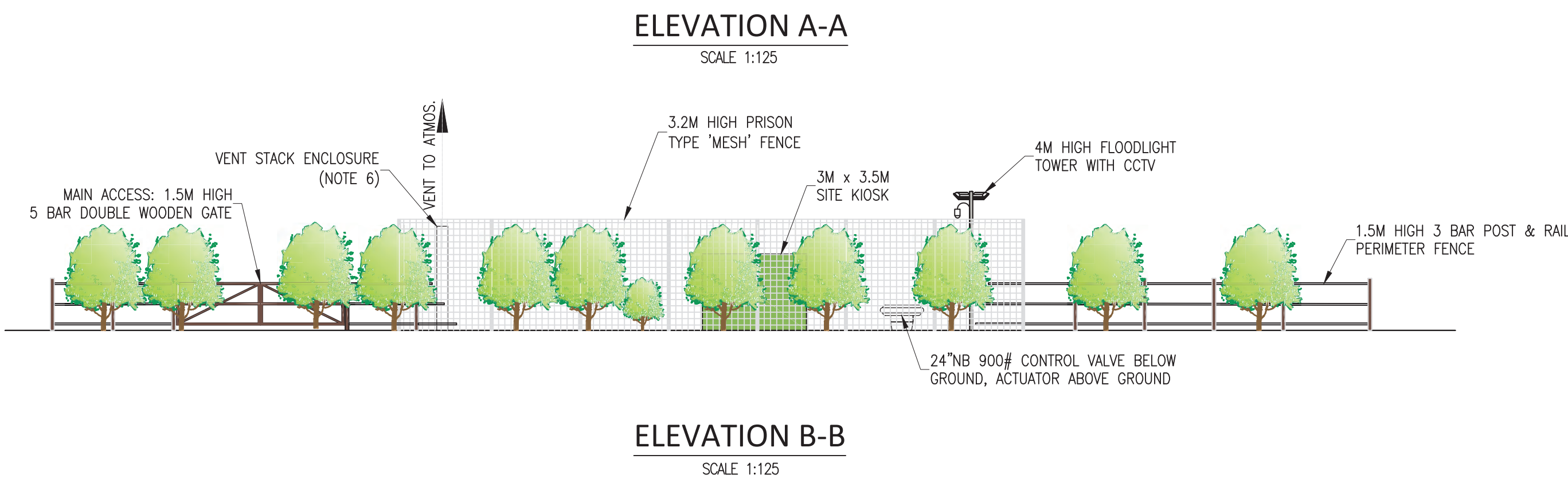
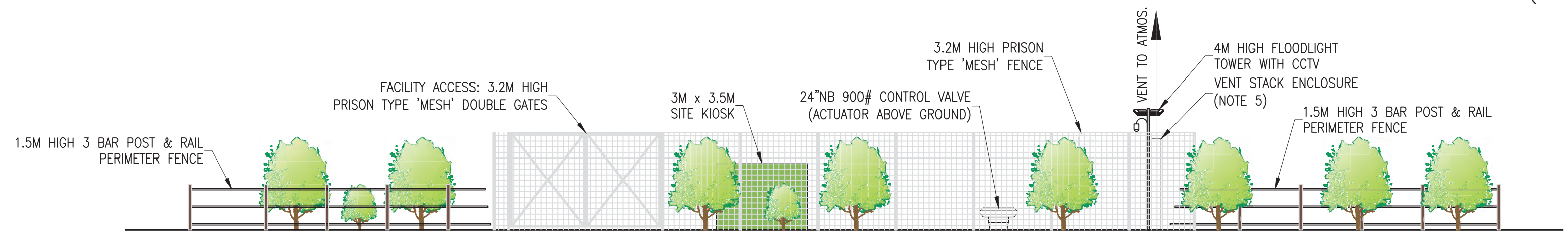
Applicant: Chrysaor Production (U.K.) Limited,
a Harbour Energy Company
PINS Reference: EN070008
Planning Act 2008 (as amended)
The Infrastructure Planning (Applications: Prescribed Forms
and Procedure) Regulations 2009 - Regulation 5(2)(o)
Date: October 2023



- GENERAL NOTES**
- ALL PIPELINE LAYOUTS AND DIMENSIONS ARE INDICATIVE/PRELIMINARY AND WILL BE UPDATED DURING FEED DESIGN.
 - PLOT ARRANGEMENT IS INDICATIVE ONLY.
 - EQUIPMENT LAYOUT IS PRELIMINARY AND WILL BE CONFIRMED DURING FEED DESIGN.
 - VENTING/PURGING REQUIREMENTS (INCLUDING STACK HEIGHT) TO BE DETERMINED AT THE FEED STAGE, AND IN ACCORDANCE WITH THE CLIENTS' DIRECTIVE.
 - VENT STACK/ENCLOSURE POSITION IS ONLY INDICATIVE. ARRANGEMENTS WILL DEPEND ON REQUIREMENTS, FINAL FACILITY GEOGRAPHICAL LOCATION, PREVAILING WIND, AND AS AGREED WITH THE CLIENT DURING THE FEED PHASE OF THE PROJECT.
 - ALL PIPEWORK AND VALVES ARE TO BE INSTALLED BELOW GROUND WITH CONTROL ACTUATOR INSTALLED ABOVE GROUND.
 - BVS DRAINAGE SYSTEM SHALL BE SOAKAWAY TYPE.
 - LAY-BY PARKING AREA SUBJECT TO LOCAL PLANNING AUTHORITY APPROVAL.

- HOLDS**
- REQUIREMENT FOR VENT STACK, LOCATION OF VENT STACK & ENCLOSURE.

Rev	Rev. Date	Purpose of Revision	Drawn	Checked	Apprv'd
3	06/07/2023	RE-ISSUED FOR INFORMATION	GS	GM	MH
2	07/06/2023	RE-ISSUED FOR INFORMATION	TD	GM	MH
1	19/05/2023	ISSUED FOR INFORMATION	DD	GM	MH
0	21/04/2023	ISSUED FOR REVIEW	TD	GM	MH



Penspen
c/o Dar Al-Handasah
150 Holborn
London
EC1N 2NS
England, UK.

PENSPEN

Client
Chysaor Production (UK) Limited
23 Lower Belgrave Street
London SW1W 0NR
United Kingdom

VikingCCS

Project
VIKING CCS PIPELINE

Drawing title
**LOUTH ROAD
BLOCK VALVE STATION
(BVS3)
Regulation 5.2 (o)
Application Document Reference 4.16
(Sheet 1 of 1)**

Drawing status
ISSUED FOR INFORMATION

Scale	AS SHOWN	DO NOT SCALE
Sheet Number	01 / 01	Original Sheet Size A1
Penspen Drawing Number	20428-CI-XLY-000-0008	Rev 3
Viking CCS Pipeline Drawing Number	PEN-GEN-P-XX-X-EN-51-00009-01	Rev D3

INFORMATION CONTAINED IN THIS DOCUMENT IS CONFIDENTIAL AND PROPRIETARY TO VIKING CCS PIPELINE OR ITS AFFILIATES AFTER BEING PREPARED BY PROFESSIONALS LIMITED OR ITS AFFILIATES (PENSPEN) AND IS FOR REFERENCE ONLY. VIKING CCS PIPELINE AND/OR PENSPEN DO NOT MAKE ANY REPRESENTATION OR WARRANTY AND SHALL NOT BE LIABLE IN ANY WAY WITH RESPECT TO THE INFORMATION CONTAINED HEREIN OR THE USE THEREOF. THE INFORMATION SHALL NOT BE REPRODUCED, COPIED, LOANED, EXEMPTED, DISCLOSED OR USED IN WHOLE OR IN PART WITHOUT THE PRIOR WRITTEN CONSENT OF VIKING CCS PIPELINE OR PENSPEN. THE DOCUMENT AND ANY COPIES THEREOF SHALL BE RETURNED OR DESTROYED ON REQUEST OF VIKING CCS PIPELINE OR PENSPEN.

