

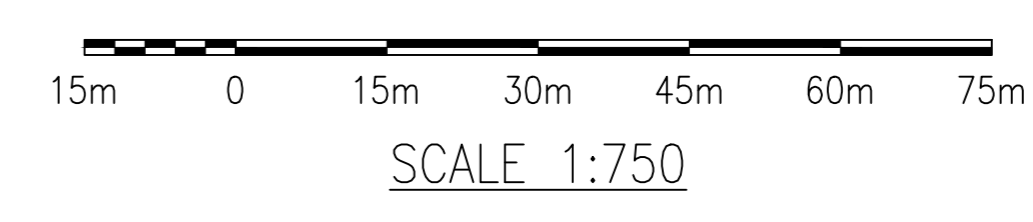
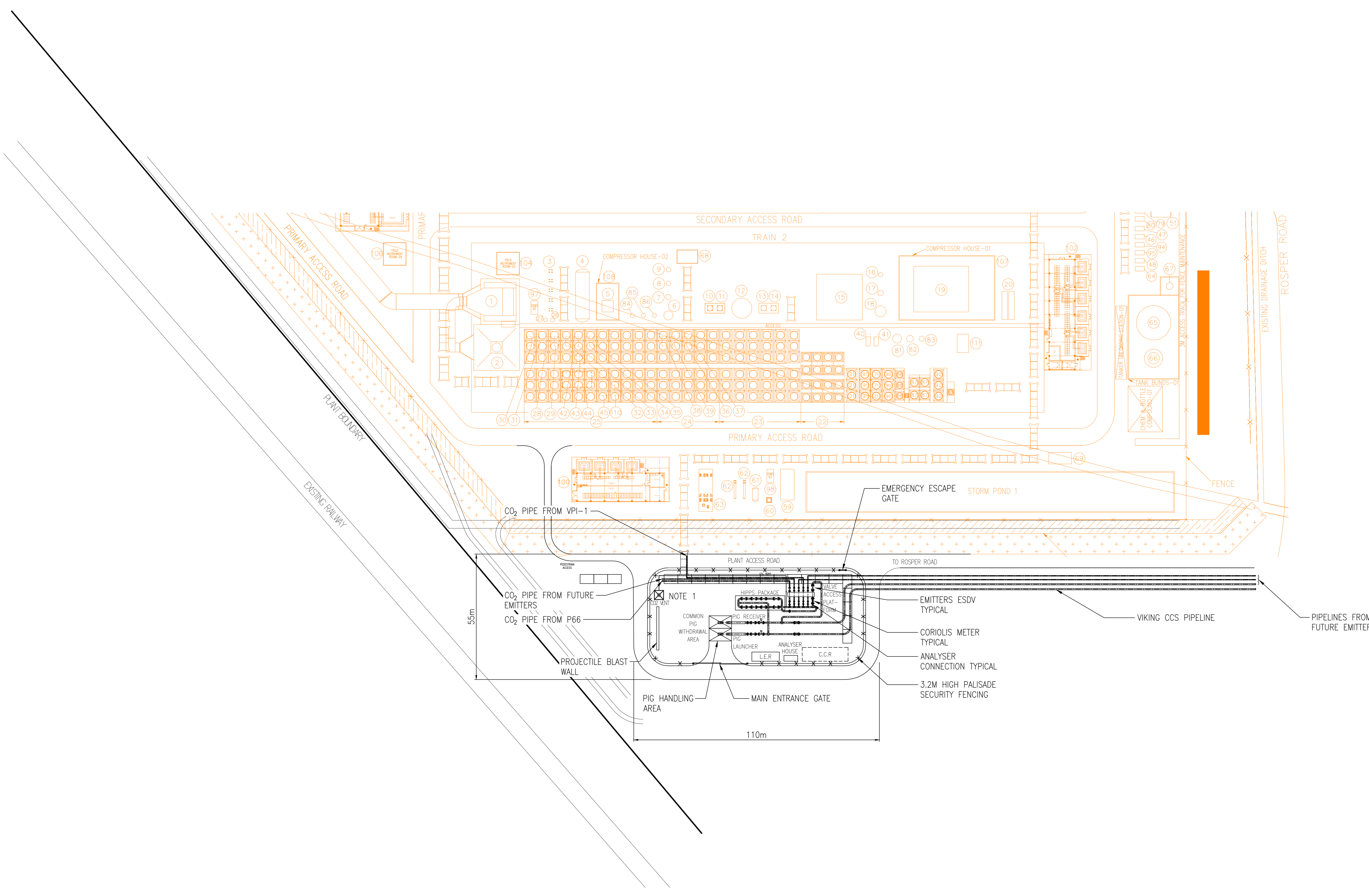
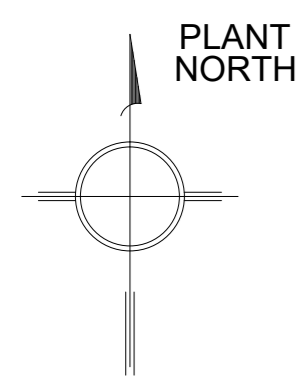


Viking CCS pipeline

4.6 Immingham Facilities Plot Plan, Routing and Elevations

Document Reference: EN070008/APP/4.6

Applicant: Chrysaor Production (U.K.) Limited,
a Harbour Energy Company
PINS Reference: EN070008
Planning Act 2008 (as amended)
The Infrastructure Planning (Applications: Prescribed Forms
and Procedure) Regulations 2009 - Regulation 5(2)(o)
Date: October 2023



- NOTES:
1. VENT STACK OPEN END TERMINATION ELEVATION = +25.0M ABOVE GRADE-NB. THE VENT WILL ONLY BE RAISED WHEN REQUIRED.
 2. LER = LOCAL EQUIPMENT ROOM
CCR = CENTRAL CONTROL ROOM
HIPPS = HIGH INTEGRITY PRESSURE PROTECTION SYSTEM
 3. ORANGE LINES AND LABELS SHOW THE LAYOUT OF THE FACILITIES AT VPI IMMINGHAM AND ARE NOT PART OF THE APPLICATION FOR A DCO.
 4. BLACK LINES AND NOTES SHOW THE LAYOUT OF THE PROPOSED DEVELOPMENT.

REV.	DATE	REVISION DESCRIPTION	ORIG'D	CHK'D	REV'D	APP'D
A5	12/07/2023	RE-ISSUED FOR USE	RM	SG	PH	PH
A4	02/06/2023	RE-ISSUED FOR USE	JB	SG	PH	PH
A3	11/11/2022	ISSUED FOR USE	JB	SG	PH	PH
A2	19/05/2022	ISSUED FOR LAYOUT REVIEW	JB	SG	PH	PH
A1	11/04/2022	ISSUED FOR CLIENT COMMENTS	JB	SG	PH	PH
A0	07/04/2022	ISSUED FOR IDC	JB	SG	PH	PH



SCALE 1:750 ORIGINAL DRAWING SIZE A0

PROJECT VIKING CCS PIPELINE FEL-2

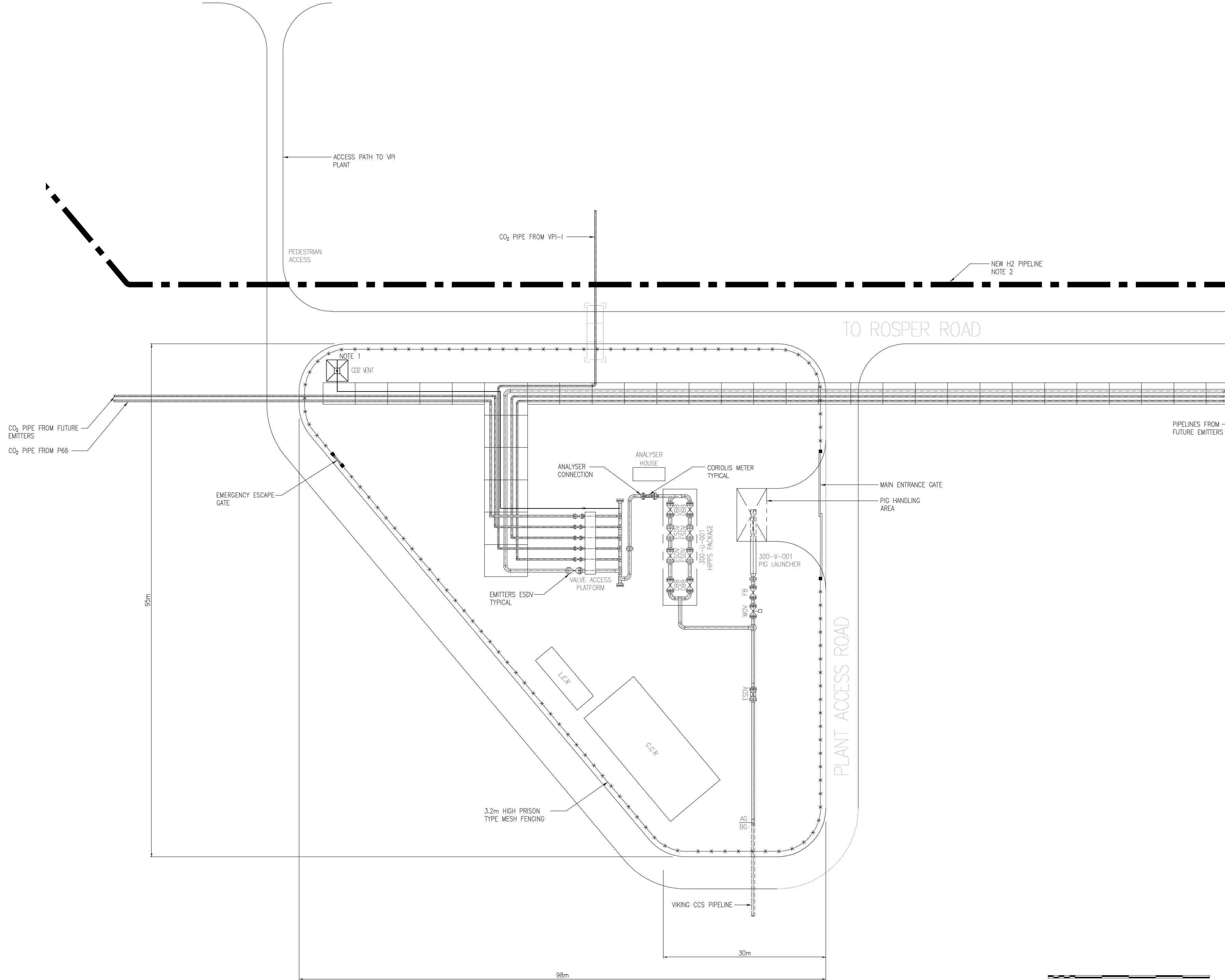
TITLE THE IMMINGHAM FACILITY PLOT PLAN

DCO APPLICATION DETAILS:
**VIKING CCS PIPELINE
 IMMINGHAM FACILITIES - PLOT PLAN
 REGULATION 5.2 (O)
 APPLICATION DOCUMENT REFERENCE 4.6
 SHEET 1 OF 3**

CLIENT DRAWING NUMBER: KNT-UKOS-H-HZI-X-EN-30-00001-00 Rev C3

KENT DRAWING NUMBER: 5211584-PI-PLP-001-01 REV A5

This document and the design it covers are the property of Kent Energies UK Limited. It CAN NOT be reproduced or communicated to any third party without prior written consent given by Kent Energies UK Limited.



- NOTES:**
- VENT STACK OPEN END TERMINATION ELEVATION = +25.0m ABOVE GRADE-NB. THE VENT WILL ONLY BE RAISED WHEN REQUIRED.
 - A 10m WIDE VOLUME HAS BEEN ALLOWED BETWEEN THE VPI BANKING AND THE NEW ROADWAY FOR INSTALLATION OF THE NEW H₂ ABOVE GROUND PIPELINE.
 - LER = LOCAL EQUIPMENT ROOM
 - CCR = CENTRAL CONTROL ROOM
 - HPPS = HIGH INTEGRITY PRESSURE PROTECTION SYSTEM
 - CCS = CARBON CAPTURE & STORAGE
 - ESDV = EMERGENCY SHUTDOWN VALVE
 - DBB = DOUBLE BLOCK AND BLEED
 - MOV = MOTOR OPERATED VALVE
 - FB = FULL BORE
 - CP = CATHODIC PROTECTION
 - H₂ = HYDROGEN
 - CO₂ = CARBON DIOXIDE

This document and the design it covers are the property of Kent Energies UK Limited. It CAN NOT be reproduced or communicated to any third party without prior written consent given by Kent Energies UK Limited.

A2	19/10/2023	ISSUED FOR USE	RM	RA	RA	RA
A1	05/09/2023	ISSUED FOR COMMENT	RM	PH	PH	PH
REV.	DATE	REVISION DESCRIPTION	ORIG'D	CHK'D	REV'D	APP'D



SCALE: 1:250 ORIGINAL DRAWING SIZE: A0

PROJECT: VIKING CCS PIPELINE

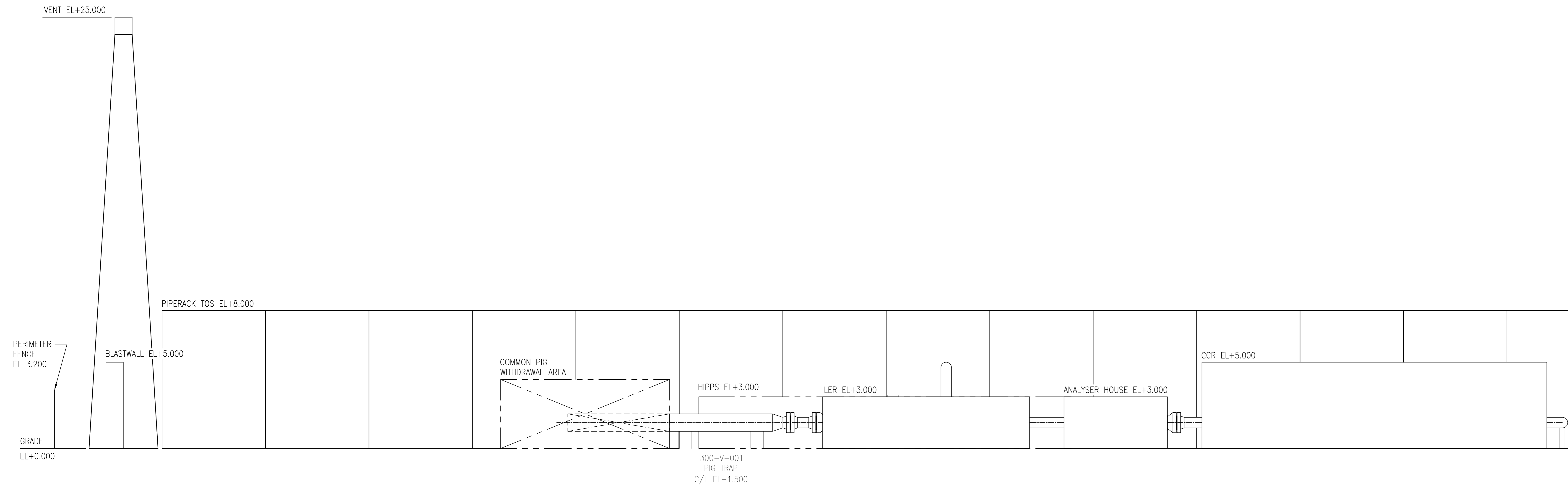
TITLE: THE IMMINGHAM FACILITY PIPE ROUTING DRAWING

DCO APPLICATION DETAILS:
 VIKING CCS PIPELINE
 IMMINGHAM FACILITIES - PIPE ROUTING DRG
 REGULATION 5.2 (O)
 APPLICATION DOCUMENT REFERENCE 4.6
 SHEET 2 OF 3

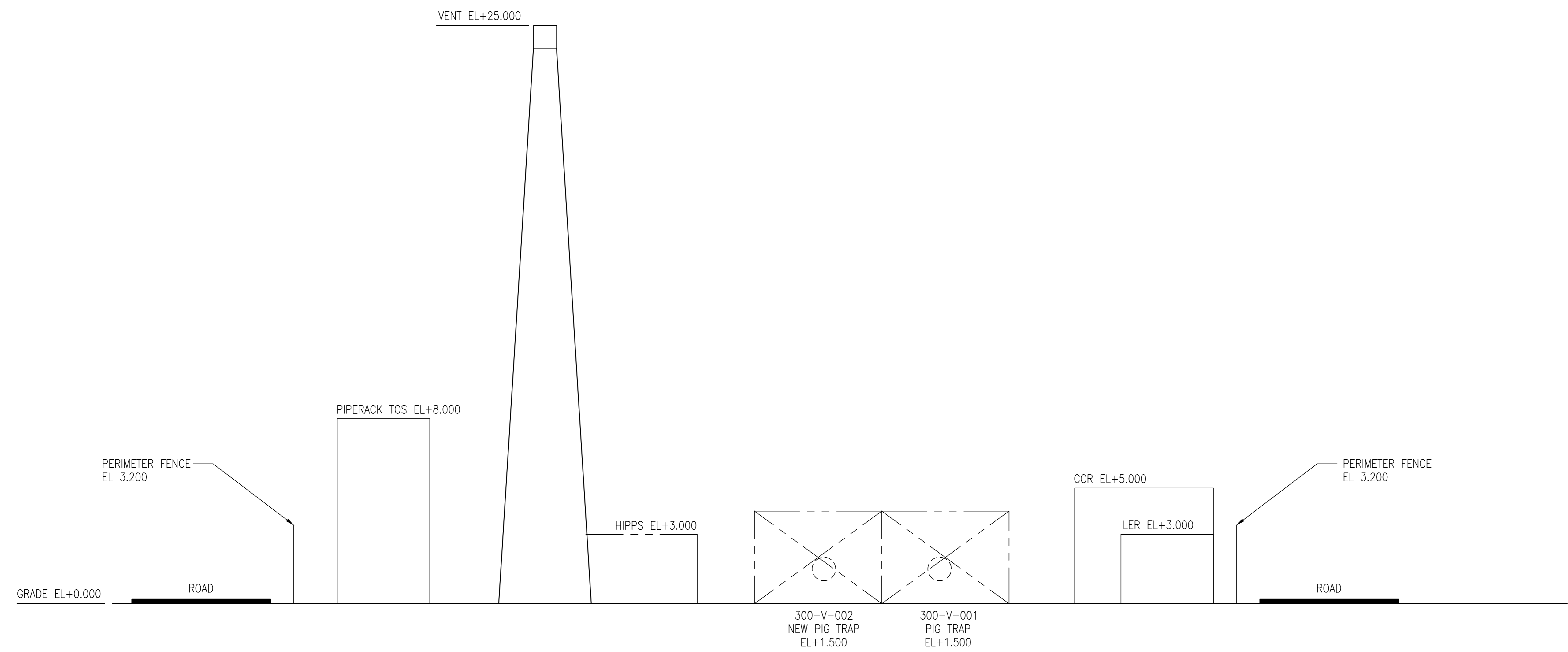
CLIENT DRAWING NUMBER: KNT-UKOS-H-HZI-X-EN-19-00001-01 Rev C1
 KENT DRAWING NUMBER: 5211584-215-PI-DWG-005 REV A2



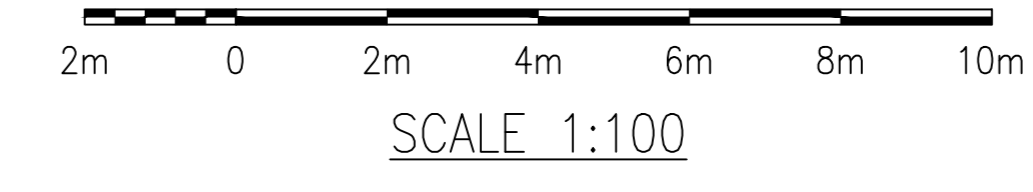
This document and the design it covers are the property of Kent Energies UK Limited. It CAN NOT be reproduced or communicated to any third party without prior written consent given by Kent Energies UK Limited.



ELEVATION LOOKING NORTH



ELEVATION LOOKING EAST



- NOTES:
- VENT STACK OPEN END TERMINATION ELEVATION = +25.0M ABOVE GRADE-NB. THE VENT WILL ONLY BE RAISED WHEN REQUIRED.
 - LER = LOCAL EQUIPMENT ROOM
CCR = CENTRAL CONTROL ROOM
HIPPS = HIGH INTEGRITY PRESSURE PROTECTION SYSTEM

REV.	DATE	REVISION DESCRIPTION	ORIG'D	CHK'D	REV'D	APP'D
A2	12/07/2023	ISSUED FOR USE	RM	SG	PH	PH
A1	02/06/2023	ISSUED FOR COMMENT	JB	SG	PH	PH
A0	12/10/2022	ISSUED FOR IDC	JB	SG	PH	PH



SCALE 1:100 ORIGINAL DRAWING SIZE A0

PROJECT VIKING CCS PIPELINE FEL-2

TITLE IMMINGHAM T&S DELIVERY POINT NORTH & EAST ELEVATIONS

DCO APPLICATION DETAILS:
VIKING CCS PIPELINE IMMINGHAM FACILITIES - ELEVATIONS REGULATION 5.2 (O) APPLICATION DOCUMENT REFERENCE 4.6 SHEET 3 OF 3

CLIENT DRAWING NUMBER: KNT-UKOS-H-HZI-X-EN-30-00003-01 Rev C1
KENT DRAWING NUMBER: 5211584-215-PI-DWG-001 REV A2