



Viking CCS pipeline

5.2.2 Consultation Report Appendix B: Appendices to Chapter Three

Document Reference: EN070008/APP/5.2.2

Applicant: Chrysaor Production (U.K.) Limited,
a Harbour Energy Company
PINS Reference: EN070008
Planning Act 2008 (as amended)
The Infrastructure Planning (Applications: Prescribed Forms
and Procedure) Regulations 2009 - Regulation 5(2)(q)
Date: October 2023

Appendix B1: Statement of Community Consultation

Viking CCS pipeline
**Statement of
Community
Consultation**

Applicant: Chrysoar Production (U.K.) Limited,
a Harbour Energy Company

PINS Reference: EN070008

November 2022

Prepared for:

Chrysaor Production (U.K) Limited, a Harbour Energy Company
Tel: +44 (0)1224 205000

Prepared by:

AECOM Limited
2 City Walk
Leeds,
LS11 9AR,
UK

© 2022 AECOM Limited. All Rights Reserved.

This document has been prepared by AECOM Limited ("AECOM") for sole use of our client Harbour Energy (the "Client") in accordance with generally accepted consultancy principles, the budget for fees and the terms of reference agreed between AECOM and the Client. Any information provided by third parties and referred to herein has not been checked or verified by AECOM, unless otherwise expressly stated in the document. No third party may rely upon this document without the prior and express written agreement of AECOM.

Table of Contents

1.	Introduction.....	5
2.	The planning process.....	8
3.	Statutory consultation.....	10
4.	Publicising the consultation	18
5.	Engagement	22
	People with disabilities.....	23
	Minority groups.....	24
	Age 24	
	Working families	24
	Traveller communities.....	25
6.	Next steps	27
	Appendix A.....	29
	Map of the route corridor for the Viking CCS pipeline	29
	Appendix B.....	30
	Map of document inspection venues.....	30
	Appendix C.....	31
	Spread of non-statutory consultation responses.....	31
	Appendix D.....	32
	Map of the locations of the statutory consultation events	32
	Appendix E.....	33
	Postcard distribution zone for statutory consultation: 3km buffer	33

Figures

Figure 1: Example of the layout of the VCR from the non-statutory consultation

Tables

Table 1: Document inspection venues

Table 2: Statutory consultation event venues

1. Introduction

1.1 About this document

- 1.1.1 The Viking CCS pipeline is a proposal for a new 55km onshore pipeline, which will transport captured carbon dioxide from Immingham to the former Theddlethorpe Gas Terminal. It is a core part of the V Net Zero CO₂ Transport and Storage project (see **Appendix A**), which will put the Humber and Lincolnshire region at the forefront of carbon capture and storage technology in the UK.
- 1.1.2 Because it is a cross-country pipeline that would previously have required consent under the Pipelines Act 1962, the project is classed as a Nationally Significant Infrastructure Project, and therefore requires a specific consent to be granted for it to be built. This is known as a Development Consent Order (DCO) and is required under the Planning Act of 2008 (the Act).
- 1.1.3 Further to the pre-application stage, an application for a DCO will be submitted to the Planning Inspectorate (PINS). There follows a 28-day period of acceptance and pre-examination stage which takes approximately three months. PINS will then hold an examination into the proposal which must be completed in six months. PINS must prepare a report on the application to the Secretary of State for the Department for Business, Energy and Industrial Strategy (BEIS), including a recommendation, within three months of the close of the Examination. The relevant Secretary of State then has a further three months to make the decision on whether to grant or refuse development consent.
- 1.1.4 This Statement of Community Consultation (SoCC) has been produced in accordance with the requirements set out by Section 47(1) of the Act, which outlines Harbour Energy's duty (as Applicant) to consult local communities on the plans for the Viking CCS pipeline (see Section 1.2). The SoCC has been prepared in consultation with the relevant local authorities whose administrative area the pipeline lies within, as outlined in Section 43(1) of the Act.
- 1.1.5 This document outlines Harbour Energy's approach to consult the local community as part of the second phase of consultation, known as a statutory consultation. The statutory consultation is taking place between 22 November 2022 and 24 January 2023.
- 1.1.6 The purpose of the statutory consultation is to seek the views of the community, landowners, local businesses and interest groups, and statutory consultees on the proposals for the project, including the preferred pipeline route.

1.2 About us

- 1.2.1 Chrysaor Production (U.K) Limited ("the Applicant") is a Harbour Energy group company. Harbour Energy aims to create value in a responsible manner for all stakeholders in accordance with global standards and achieve net zero in their operations by 2035.

- 1.2.2 Harbour Energy wishes to promote carbon dioxide transportation infrastructure in order to enable and encourage the transition towards net zero carbon across the Humber and Lincolnshire Area.
- 1.2.3 To achieve this vision, Harbour Energy is working with key partners at the Immingham Industrial Cluster, including Humber Zero operators (Philipps 66 and VPI Immingham), as part of the wider V Net Zero CO₂ Transport and Storage project. This project will support the UK Government's target of achieving net zero carbon emissions by 2050, by removing emissions from key industry within the Humber and Greater Lincolnshire region.
- 1.2.4 Harbour Energy has almost 90 years of operating experience, including more than 40 years of experience working within the Viking Field Area of the North Sea and therefore maintains an extensive record of safety management in the oil and gas industry.

1.3 Project description

- 1.3.1 The Viking CCS pipeline is a proposed new onshore 55km pipeline, that will transport captured carbon dioxide from the Immingham industrial cluster to the former Theddlethorpe Gas Terminal. A DCO application is required for this new onshore pipeline.
- 1.3.2 At Theddlethorpe Gas Terminal, the Viking CCS pipeline will connect to an existing pipeline, known as the Lincolnshire Offshore Gas Gathering System (LOGGS) Pipeline. From here, it will be transported 140km offshore into the Viking Area of the Southern North Sea, where the captured carbon dioxide will be injected 9000ft under the seabed into two depleted gas reservoirs. This is part of a wider project called the V Net Zero CO₂ Transport and Storage project.
- 1.3.3 The Viking CCS pipeline forms part of a technology known as Carbon Capture and Storage (CCS), which has been identified by the UK Government as a key method to achieve net zero greenhouse gas emissions by 2050 in England and Wales. The Government's *Net Zero Strategy*¹ outlines that carbon capture infrastructure will be essential to capture and store 20-30 million tonnes of carbon dioxide per year by 2030.
- 1.3.4 Harbour Energy, alongside primary emitters around Immingham, will form a cluster for carbon capture and storage, known as the V Net Zero Humber Cluster. The cluster will be formed of key industries and will work towards industrial decarbonisation in the Humber region through the use of carbon capture and storage infrastructure.

Project timeline

Spring 2022	Non-statutory consultation on initial route corridor
Autumn 2022	Second round of non-statutory consultation on updated route corridor
Winter 2022 - 2023	Statutory consultation on preferred route

¹ [Net Zero Strategy: Build Back Greener](#)

2023	DCO application submitted
TBC 2024	Anticipated decision by Secretary of State
TBC 2025	Work on the project to begin
TBC 2027	Construction period to conclude

1.4 Consultation to date

Non-statutory consultation on initial route corridor

- 1.4.1 A non-statutory consultation was held for six weeks, from Tuesday 26 April to Tuesday 7 June 2022. This first phase of consultation introduced the proposals, and sought feedback from members of the public, landowners and key stakeholders on the initial pipeline corridor, spanning from Immingham industrial site to the former Theddlethorpe Gas Terminal.
- 1.4.2 In total, the non-statutory consultation received 52 survey responses. Feedback received at this consultation helped inform the ongoing development of the pipeline corridor.

Further non-statutory consultation on updated route corridor

- 1.4.3 A second round of non-statutory consultation was held between Thursday 8 September and Thursday 6 October 2022. This consultation was held as the route corridor was changed in some areas following the feedback from that first round of consultation, as well as further technical work by the project team. Feedback from this consultation has helped to inform the ongoing development of the pipeline route.
- 1.4.4 A total of 36 survey responses were received during the four week further non-statutory consultation period. The feedback from this consultation was analysed and the findings are included in the non-statutory consultation report.
- 1.4.5 Feedback shows general support for Harbour Energy's efforts to decarbonise industry by building carbon capture infrastructure, and the majority of respondents indicated they understood the rationale for the pipeline. Feedback predominantly commented on environmental impacts, community impacts, and the corridor routing. The findings will also be used to guide the consultation approach for the statutory consultation period.
- 1.4.6 Both consultations are summarised in the *Non-statutory Consultation Report*. This explains how the consultations were carried out and highlights the feedback received, the core themes that were identified, and any recommendations made for the detailed design of the pipeline corridor. This report will be available as part of the statutory consultation documents.

2. The planning process

2.1 Development Consent Order

- 2.1.1 The Viking CCS pipeline is classified as a Nationally Significant Infrastructure Project under Section 14(1)(g) and Section 21 of the Act and will therefore require consent via a DCO.
- 2.1.2 Following statutory consultation, Harbour Energy intends to submit its DCO application in 2023, with a decision expected in 2024.
- 2.1.3 Under the Act, Harbour Energy is required to consult members of the local community before the application is submitted. The application must prove to PINS that adequate consultation has been conducted prior to submitting the DCO application. All responses received to the consultation will be carefully considered and considered in the design evolution of the project, in line with Section 49 of the Act.
- 2.1.4 Details of any responses received during consultation and the account taken of those responses will be included in the Consultation Report. This Consultation Report will be submitted with the DCO application and will be available for public view.
- 2.1.5 More information on the DCO process can be found on the Planning Inspectorate's website: infrastructure.planninginspectorate.gov.uk.

2.2 Environmental Impact Assessment

- 2.2.1 The Viking CCS pipeline is a project type defined under Schedule 2 of the Infrastructure Planning (EIA) Regulations 2017, and because it is likely to have significant effects, it requires an Environmental Impact Assessment (EIA) to be undertaken and an Environmental Statement (ES) to be submitted alongside the application for development consent.
- 2.2.2 EIA is the process of identifying, evaluating and mitigating the likely significant environmental effects of a project. The ES will include a description of the project's main features, and the measures to be taken to prevent, or reduce the likely significant effects on the environment.
- 2.2.3 Harbour Energy has also obtained a scoping opinion from PINS, which outlines PINS' written opinion on the scope and level of information to be included in the EIA. The scoping opinion can be read at the following link: <https://infrastructure.planninginspectorate.gov.uk/wp-content/uploads/projects/EN070008/EN070008-000083-EN070008%20V%20Net%20Zero%20Pipeline%20-%20Scoping%20Opinion.pdf>.
- 2.2.4 A Preliminary Environmental Information Report (PEIR) will be presented as part of the statutory consultation materials. The PEIR will report the outcomes of the preliminary assessment of the likely significant environmental effects of the development in accordance with Regulation 12(2) of the EIA Regulations 2017.

2.3 Consultation with local authorities

2.3.1 Section 47(2) of the Act outlines the obligation for the Applicant to consult host local authorities on the SoCC, including county councils and district councils. In the case of the Viking CCS pipeline, the host local authorities are:

- Lincolnshire County Council
- North Lincolnshire Council
- North East Lincolnshire Council
- East Lindsey District Council
- West Lindsey District Council

2.3.2 A period of informal consultation with local authorities took place between 4 August and 1 September 2022, during which initial feedback on the draft SoCC was collected.

2.3.3 The SoCC was then updated based on these comments ahead of a formal consultation period on the updated draft SoCC for 28 days, from 20 September to 19 October 2022.

3. Statutory consultation

3.1 Overview

- 3.1.1 The statutory consultation for the Viking CCS pipeline is taking place between 22 November 2022 and 24 January 2023 and will run for a period of nine weeks.
- 3.1.2 The purpose of this phase of consultation is to receive feedback on the proposals ahead of the DCO submission in 2023. The consultation will provide an opportunity for people to share their feedback on a more refined pipeline route and enable members of the public to find out more detailed information on the plans. The statutory consultation is also an opportunity to raise awareness of the pipeline among the local community.
- 3.1.3 Harbour Energy is committed to running a factual statutory consultation, in accordance with the methods outlined in the SoCC and the Act. Effective stakeholder engagement and consultation is intrinsic to the Act and fundamental to the success of the project, therefore it is important to provide further opportunity for local communities to feed into the development of the proposals prior to submission.

3.2 Learnings from the non-statutory consultation

- 3.2.1 The approach to statutory consultation has been influenced by the learnings from the initial non-statutory consultation, which was held between 26 April and 7 June 2022, and the further non-statutory consultation, held between 8 September and 6 October 2022. The non-statutory consultation report outlines the methods used, and an analysis of the feedback received throughout the consultation periods. A full account of the non-statutory consultation and the final results can be read on the project website.
- 3.2.2 Analysis of the feedback received as part of the development of the non-statutory consultation has been used to inform the development of this SoCC and the approach for the statutory consultation. Some of the main findings are listed below.
- The majority of people that responded to the consultation were within the local area of the proposed pipeline corridor, including responses from within the towns of Immingham, Mablethorpe, North Thoresby, Louth and Grimoldby. Other responses were received from consultees within Lincolnshire and elsewhere within the UK, including Ipswich. The spread of consultation responses can be viewed in **Appendix C**. As a result, the statutory consultation will hold consultation events in areas that are near the proposed pipeline route and an event in Louth, to accommodate community members who commute or travel through the area from larger towns. News publicity and social media posts will extend beyond the proposed pipeline corridor to encourage wider participation.
 - When asked how the respondent had heard about the consultation, the largest proportion of respondents noted they were informed via the postcard notification, followed by word of mouth and social media channels. Only 3% of respondents heard about the consultation through

newspaper, news articles or radio. Publicity for the statutory consultation will therefore consist of the methods used for the non-statutory consultation, in addition to statutory notices within national and local papers. Consultation information will also be provided to parish councils.

- The number of attendees at each consultation event was recorded by the project team. In total, there were 306 attendees across the seven non-statutory events, with the highest footfall at Brackenborough Hotel, Louth (64), Theddlethorpe Village Hall (62), North Thoresby Village Hall (51) and Grimoldby and Manby Village Hall (50). Taking this into consideration, venues in these locations will also be used during the statutory consultation, with events also being hosted in Immingham, due to the population density and location close to the pipeline route, as well as in Mablethorpe and Healing.

3.3 What will be consulted on?

3.3.1 Throughout the statutory consultation, Harbour Energy will ask for views on:

- The proposed Viking CCS pipeline route.
- Impacts of the proposed pipeline, including, but not limited to:
 - environmental impacts;
 - economic impacts;
 - social impacts; and
 - construction impacts.
- Proposed mitigations for the anticipated impacts of the pipeline.
- The PEIR.
- Information on the construction of the pipeline, including mitigations to reduce local disruption and anticipated timescales.

3.4 Statutory consultation documents

3.4.1 Several documents will be available to view throughout the consultation period, online via the project website, at in-person consultation events, and at document inspection venues.

3.4.2 Throughout the duration of the consultation, members of the public and stakeholders will have the opportunity to download documentation free of charge from the Viking CCS pipeline website (<https://consultation.vikingccs.co.uk/>). Printed copies of the consultation materials will also be available to send via post, upon request, free of charge.

3.4.3 Copies of documentation and consultation materials can also be made available in alternative formats and requests will be considered on a case-by-case basis. Digital materials will also be hosted on the Virtual Consultation Room which is compliant with web accessibility standards.

3.4.4 The requirement to provide a physical inspection for members of the public to view the submitted application documents expired as of May 2020 ([Reference ID: 15-036-20200513](#)). Despite this, Harbour Energy is committed to providing an accessible approach to engagement and consultation on the Viking CCS pipeline, therefore a selection of venues will be made available for people to inspect the documentation accordingly throughout the consultation period. These locations are subject to the agreement and availability of the venues and are outlined in Table 1, and in **Appendix B**.

Table 1: Document inspection venues

Map ID	Document inspection venue	Address	Opening hours (correct at the time of publication) ²	
1	Immingham Library	Pelham Rd, Immingham, DN40 1QF	Monday Tuesday Wednesday Thursday Friday Saturday Sunday	8am to 7:50pm 8am to 7:50pm 8am to 7:50pm 8am to 7:50pm 8am to 7:50pm 9am to 1:50pm 9am to 1:50pm
2	Keelby Community Library	Victoria Road, Keelby, Grimsby, DN41 8EH	Monday Tuesday Wednesday Thursday Friday Saturday Sunday	10am to 12pm Closed 3pm to 5pm Closed Closed 10am to 12 noon Closed
3	Waltham Library	High St, Waltham, Grimsby, DN37 0LL	Monday Tuesday Wednesday Thursday Friday Saturday Sunday	Closed 8:30 am to 12:30pm and 1:30 pm to 5:30pm 8:30 am to 12:30pm and 1:30 pm to 5:30pm 8:30 am to 12:30pm and 1:30 pm to 5:30pm 8:30 am to 12:30pm and 1:30 pm to 5:30pm 9am to 1pm Closed
4	Louth Library	Northgate, Louth, Lincolnshire, LN11 0LY	Monday Tuesday Wednesday Thursday	9am to 5pm 9am to 6pm 9am to 5pm 9am to 2pm

² Venues may be closed over the Christmas period. Please check with the venues before travelling.

Map ID	Document inspection venue	Address	Opening hours (correct at the time of publication) ²	
			Friday	9am to 5pm
			Saturday	9am to 4pm
			Sunday	Closed
5	Mablethorpe Library	Stanley Avenue, Mablethorpe, Lincolnshire, LN12 1DP	Monday	9am to 5pm
			Tuesday	9am to 5pm
			Wednesday	9am to 5pm
			Thursday	9am to 6pm
			Friday	9am to 1pm
			Saturday	9am to 1pm
			Sunday	Closed

3.4.5 The documents that will be available to view during the statutory consultation, online at the project website, or at the nominated inspection locations, are listed below.

- Consultation brochure
- Consultation FAQ document
- Consultation response form
- Maps of the pipeline route
- Non-Statutory Consultation Report
- Statement of Community Consultation
- Preliminary Environmental Information Report
- PEIR Non-Technical Summary

3.4.6 Documents available to view at the statutory consultation, will remain accessible, and available to view on the project website: <https://consultation.vikingccs.co.uk/>.

3.5 Consultation approach

3.5.1 The statutory consultation will use a mixture of methods to make accessing the consultation as simple as possible for local communities.

3.5.2 Effective stakeholder engagement and consultation provides a mechanism to understand the objectives and requirements of key stakeholders and to build trust and a productive relationship through an open, transparent, and collaborative approach. Consultation is also essential to provide stakeholders with opportunities to be involved in the DCO process, providing an appropriate platform to provide feedback which can help inform the development of more detailed proposals.

- 3.5.3 The stakeholder engagement and consultation approach to be taken for the statutory consultation, will be underpinned by the following principles:
- early and ongoing engagement is to be undertaken to inform and influence the design process;
 - feedback will be sought in the iterative design process and be taken into consideration;
 - long-term relationships will be built with key stakeholders throughout the different stages of the project to help better understand their views;
 - stakeholder concerns will be addressed, where possible and practicable, through engagement; and
 - appropriate statutory consultation is undertaken in compliance with requirements of the Planning Act (Ref 5-1) and EIA Regulations (Ref 5-2).
- 3.5.4 Information regarding the consultation will be available firstly on the project website in the dedicated Consultation section (<https://consultation.vikingccs.co.uk/consultation>). This will host details of the consultation events being held, as well as directing users to the Virtual Consultation Room (VCR). More information on the VCR is provided in section 3.6.

3.6 Consultation events

- 3.6.1 Several in-person consultation events will be hosted at the start of the statutory consultation. These will be drop-in style events designed for members of the public to attend, view the plans in more detail and ask questions of the project team. Technical specialists from the project team will be present throughout the event and this will ensure that individuals from different disciplines are available to answer more specific or technical questions that attendees may have.
- 3.6.2 At each consultation drop-in event, there will be exhibition boards around the venue for people to read, as well as printed maps of the pipeline route for people to inspect in more detail. Printed copies of the consultation brochure, the project FAQ document and route maps will be available for people to take away with them from the events.
- 3.6.3 A consultation response station will be in place at the events to allow people to fill out the survey response form manually, or virtually via an iPad at the time of the event. A member of the project team will be able to assist with this if requested. Hard copies of the survey will be available for attendees to take away and return in their own time via freepost.
- 3.6.4 Seven consultation events will be held throughout the consultation period for the project. The venues are subject to the agreement and availability of the establishments; however, the locations of the event venues have been selected based on the level of attendance from the non-statutory consultation events held in April - May 2022 and September – October 2022, and the proximity to the proposed pipeline route.
- 3.6.5 Based on the learnings from the non-statutory consultation (as noted in section **Error! Reference source not found.**), extra consultation events will

be held for the statutory consultation to provide further opportunity for members of the community to attend and provide their feedback. The venue type has been adjusted to reflect the popularity of the venues located in more built-up areas. The locations of the proposed consultation venues are listed in **Table 2**.

3.6.6 More details on the event dates, areas covered, and addresses can be found in **Table 2** below. A map of the locations of the consultation event venues can also be found in **Appendix D**.

Table 2: Statutory consultation event venues

Map ID	Date and time	Area	Venue Address
1	Tuesday 22 nd November 3pm – 7pm	Theddlethorpe	Theddlethorpe Village Hall, Silver St, Theddlethorpe, Mablethorpe, LN12 1PA
2	Wednesday 23 rd November 3pm – 7pm	Louth	Louth Town Hall, Eastgate, Louth, LN11 9NH
3	Friday 25 th November 3pm – 7pm	Immingham	Immingham Civic Centre Hub, Pelham Road, Immingham, DN40 1QF
4	Saturday 26 th November 2pm – 5pm	Healing	Healing Village Hall, Poplar Road Park, Poplar Road, Healing, DN41 7SR
5	Monday 28 th November 3pm – 7pm	Mablethorpe	Trusthorpe Village Hall, Sutton Rd, Trusthorpe, Mablethorpe LN12 2PH
6	Wednesday 30 th November 3pm – 7pm	North Thoresby	North Thoresby Village Hall, The Square, North Thoresby, Grimsby, DN36 5QL
7	Thursday 1 st December 3pm – 7pm	Grimoldby and Manby	Grimoldby and Manby Village Hall, 6 Tinkle Street, Grimoldby, Lincolnshire, LN11 8SW

3.6.7 The venues listed will be provisionally booked and will be subject to a venue inspection, which determines their suitability in terms of accessibility, proximity, availability of public transport, safety and facilities available. Depending on the outcome of these inspections, the venues may be subject to change.

3.7 All consultation events will be planned in accordance with the COVID-19 guidance and regulations in place at the time.

3.7 Virtual Consultation Room

- 3.8.1 The VCR will be used as an additional method of engagement with the public. This is an interactive web-based tool which aims to complement in-person events and increase the reach of the consultation. This provides greater accessibility and flexibility for people who are unable to, or do not want to attend the in-person events, allowing them to view the same information in their own time.
- 3.8.2 The VCR is a fully accessible platform to Web Content Accessibility Guidelines (WCAG) 2.1 standards and will be open 24 hours a day to access from computer, mobile or tablet.
- 3.8.3 The VCR will be developed to resemble a traditional exhibition room (see **Figure 1**), with exhibition boards positioned around the room, as well as other supporting information such as videos and embedded links to supporting YouTube videos. All consultation materials will be available to download from the VCR, including the consultation brochure, FAQ document and non-statutory consultation report. The VCR will also include a consultation response station, where people can submit their feedback online, or download a hard copy version to submit via email or freepost.
- 3.8.4 As users enter the 360° room, they will be able to navigate using the in-platform controls, their mouse or keypad, or by touch and drag on mobile devices.
- 3.8.5 The VCR will be available to access via a link on the project website: <https://consultation.vikingccs.co.uk/consultation>. This link will also be listed in the consultation materials.

Figure 1: Example of the layout of the VCR from the non-statutory consultation



- 3.8.6 In addition to the in-person events and VCR, an online webinar will be held on Tuesday 10th January 2023 at 7pm to enable people to learn more about the proposals and have an opportunity to ask questions. Details of how to sign up for the webinar will be made available on the VCR.

3.9 Cancellations or changes

- 3.9.1 In the event of changing Government guidelines due to COVID-19, or other unforeseen circumstances meaning the consultation events must be cancelled, Harbour Energy will inform people as early as possible of the cancellation or expected change via the project website and on social media.
- 3.9.2 The information that would have been presented at the in-person events, will be available to view on the VCR, and people will be able to submit questions to the project team. Communication channels such as telephone, email and freepost will be publicised on the consultation materials, and on the project website to allow people to contact the project team if they have further questions.

4. Publicising the consultation

4.1.1 Harbour Energy has identified several methods to publicise the statutory consultation, in accordance with Section 47 and 48 of the Act. This will ensure the project's stakeholders have ample opportunities to participate in the consultation and leave their feedback on the proposed pipeline.

4.2 Project website

4.2.1 Details of the upcoming statutory consultation launch, as well as the dates and addresses of the consultation events will be published on the project website: <https://consultation.vikingccs.co.uk>.

4.2.2 The website will be kept updated throughout the consultation period. This contains information for landowners, including contact information and a dedicated contact form.

4.2.3 Documents will be available to view and download from the project website, including the SoCC, PEIR, PEIR Non-Technical Summary, Non-Statutory Consultation Report, consultation brochure, consultation FAQ, map of the proposed route including draft order limits (the land within which all of the required construction and permanent infrastructure will be located), and the consultation response form.

4.2.4 The project website will signpost the VCR for the statutory consultation, which will include all the information materials including the exhibition boards and supporting materials and a virtual response form. Further to this, a clear link will also be provided on the project website to direct users to the online response form, allowing people to share their views on the project.

4.3 Postcard distribution

4.3.1 A postcard will be sent to residents and businesses along the proposed pipeline route, informing them of the upcoming statutory consultation and inviting them to the drop-in events.

4.3.2 The postcard will include the dates and times of the consultation events, as well as links to the project website and a summary of how to provide feedback.

4.3.3 Prior to the non-statutory consultations, postcards were distributed to residents and businesses within a 1.5km buffer zone of the centre of the proposed pipeline corridor. Postcards were also issued to all the registered landowners within the scoping boundary. A similar approach will be used for the statutory consultation, and to increase the reach of the consultation, and encourage greater numbers of responses, the distribution boundary will be widened to a 3km buffer zone from the centre of the preferred pipeline route.

4.3.4 The proposed distribution zone for postcard delivery can be viewed in **Appendix E**. It is anticipated that over 20,000 businesses, residents and landowners will be contacted in total.

4.4 Statutory consultation letters and email notifications

- 4.4.1 In accordance with Section 47 of the Act, prior to the statutory consultation launch, project stakeholders, including those identified by Harbour Energy as having an interest in the project, Section 42 consultees³, local businesses, and interest groups will be contacted via email or letter.
- 4.4.2 The email or letter notification will alert stakeholders of the upcoming consultation with details of the events and provide the link to the project website and VCR which will contain all the consultation materials and documentation. Instructions for leaving feedback will be given, alongside the different communication channels available.
- 4.4.3 Section 42 consultees will be notified by letter that they have been identified as statutory consultees as part of the consultation process and will be invited to provide feedback on the proposals.
- 4.4.4 Non-statutory consultees will also be sent a notification via email. Non-statutory consultees include local businesses, interest groups and other stakeholders identified as having an interest in the project, such as Lincolnshire Wildlife Trust. This will be sent from the project email account (vikingccspipeline@aecom.com).

4.5 Statutory notice

- 4.5.1 In compliance with Section 47 and Section 48(1) of the Act, Harbour Energy will publish a notice in The Times and in the London Gazette to publicise the statutory consultation.
- 4.5.2 For two consecutive weeks, the notice will also be published in the Grimsby Telegraph.
- 4.5.3 The statutory notices will include information on the proposed pipeline, details of the proposals and what documents will be available to view, where they can be inspected and the charge for documents. Information on the consultation launch, dates and addresses of the upcoming consultation events will be provided. Instructions and the deadline for responding to the consultation will be given, alongside the different communication channels available to contact the project. A link to the project website and the VCR will also be included in the notification.
- 4.5.4 For the newspapers that have digital channels available, a copy of the notice will be published online.

4.6 Parish council notice boards, newsletters and websites

- 4.6.1 Information will be submitted to local parish councils situated along the proposed route of the new Viking CCS pipeline, with a request that they include the details of the statutory consultation within their newsletters, notice boards and publish on their website to help publicise the statutory

³ This will include landowners and Schedule 1 Stakeholders (as outlined in Schedule 1 of The Infrastructure Planning Regulations 2009). The Planning Inspectorate has identified the Schedule 1 stakeholders to be consulted, which is available in Appendix A of the Scoping Opinion: <https://infrastructure.planninginspectorate.gov.uk/wp-content/uploads/projects/EN070008/EN070008-000083-EN070008%20V%20Net%20Zero%20Pipeline%20-%20Scoping%20Opinion.pdf>

consultation. The information to be provided will include a concise summary of the project, the statutory consultation timescales, a link to the project website and virtual consultation room, and instructions for providing feedback including deadlines for submission.

- 4.6.2 A pack of posters will be sent to the parish councils to display, which will include a link to the project website, project contact details and instructions on how to respond to the consultation.
- 4.6.3 The parish councils that will be contacted include those identified as statutory consultees by PINS (as outlined by Schedule 1 of the Infrastructure Planning Regulations 2009) and those requested by local authorities, which are listed below.
- Alvingham Parish Council
 - Ashby-cum-Fenby Parish Council
 - Barnoldby-le-Beck Parish Council
 - Brocklesby Parish Council
 - Covenham Parish Council
 - Fulstow Parish Council
 - Fotherby Parish Council
 - Gayton Le Marsh Parish Council
 - Great and Little Carlton Parish Council
 - Grimoldby and Manby Parish Council
 - Habrough Parish Council
 - Healing Parish Council
 - Immingham Town Council
 - Irby Upon Humber Parish
 - Keddington Parish Meeting
 - Keelby Parish Council
 - Laceby Parish Council
 - Ludborough Parish Council
 - Mablethorpe and Sutton Town Council
 - North Cockerington Parish Council
 - North Killingholme Parish Council
 - North Thoresby, Waithe and Grainsby Parish Council
 - Riby Parish Council
 - Saltfleetby Parish Council

- South Cockerington Parish Council
- South Killingholme Parish Council
- Stallingborough Parish Council
- Theddlethorpe All Saints and St Helens Parish Council
- Utterby Parish Council

4.7 Social media

- 4.7.1 Social media content will be shared to publicise the statutory consultation and be scheduled in the run up to the statutory consultation to raise awareness of the upcoming events, and to generate interest around the project.
- 4.7.2 Social media channels to be used will include the project Twitter (@vnetzerocluster) and LinkedIn (<https://www.linkedin.com/company/v-net-zero-cluster/>). Social media content will include posts regarding the proposals, the consultation event schedule, how feedback can be left, and links to the project website and VCR.
- 4.7.3 Through the briefings held with elected members from the relevant host local authorities of the project, it will be requested by Harbour Energy that social media posts are shared to personal networks to encourage participation in the consultation and promote a wider reach.

4.8 Media

- 4.8.1 Harbour Energy will engage with local media publications about the project and the consultation.

4.9 Posters

- 4.9.1 Posters advertising the consultation will be shared with community locations along the route of the preferred pipeline to help promote the in-person events and where information can be found online.
- 4.9.2 Posters will also be shared with parish councils and schools along the route.

5. Engagement

- 5.1.1 Harbour Energy is committed to conducting constructive engagement with local communities to ensure information on the consultation is shared widely and encourages further participation from stakeholders and members of the public.
- 5.1.2 Engagement with local authorities and elected members is expected to take place in the three weeks prior to the launch of the consultation. This is to ensure they have the information needed to answer queries from residents and constituents when the consultation begins.
- 5.1.3 Other key stakeholders will be contacted at the launch of the consultation to share information about the consultation and encourage them to share the details with their networks.

5.2 Local authorities

- 5.2.1 Invitations to briefings with elected members and appropriate officers from the relevant host local authorities for the project⁴ will be issued prior to the launch of the statutory consultation. These briefings will aim to share more detailed project information, provide a summary of the feedback from the non-statutory consultation, facilitate a forum for feedback to be left, and for any concerns or requirements to be discussed.
- 5.2.2 It will be requested as an agenda item within the briefing with host local authorities that elected members share the information provided, to generate a wider reach via their personal networks to encourage participation in the consultation.

5.3 Elected Members of Parliament

- 5.3.1 Invitations for briefings with elected Members of Parliament will be issued ahead of the consultation launch. These briefings will aim to share more detailed project information and an overview of the consultation process, provide a summary of the feedback from the non-statutory consultation, and provide an opportunity to ask any questions.

5.4 Local businesses

- 5.4.1 Local businesses will be alerted of the statutory consultation via the postcard distribution zone, that will be produced for 3km from the centre of the pipeline corridor (as outlined in **Appendix E**).
- 5.4.2 Additionally, Harbour Energy will encourage participation and the provision of feedback on the proposals from regional business groups, such as the Lincolnshire Chamber of Commerce, Greater Lincolnshire Local Enterprise Partnership (LEP) and the Northeast LEP. We will invite these business groups to share the details of the project and the consultation with their

⁴The relevant host local authorities in question are: Lincolnshire County Council, North Lincolnshire Council, North East Lincolnshire Council, West Lindsey District Council and East Lindsey District Council.

networks, in order to widen the reach of the statutory consultation and increase participation within the business community.

5.5 Seldom heard groups

5.5.1 Harbour Energy will work closely with the host local authorities for the project, to ensure that seldom heard groups receive suitable information on the consultation. Seldom heard groups are those that are often under-represented in the planning process and those that have protected characteristics under the Equality Act 2010.

5.5.2 Harbour Energy will consult with local authorities to identify seldom heard groups, based upon local demographic and understanding.

People with disabilities

5.5.3 According to the 2011 Census, 26.8% of all households in North East Lincolnshire had at least one person with a disability, which is higher than the national average.

5.5.4 Harbour Energy will therefore work closely with local authorities to understand how best to engage with groups representing people with disabilities. As part of this work, Harbour Energy will request the host councils share information on the project and upcoming consultation details with their disability focused working groups. These are outlined below.

- **Lincolnshire County Council** – Disability staff engagement group⁵.
- **North Lincolnshire Council** – Learning Disability Partnership⁶.
- **North East Lincolnshire Council** – Community Equality Impact Assessment Panel.⁷
- **West Lindsey District Council** – groups identified as part of the WLDC Equality Strategy 2020-2024⁸
- **East Lindsey District Council** – groups identified by the Corporate Strategy.⁹

5.5.5 All consultation venues will undergo an assessment prior to booking, which will determine the suitability of the location in terms of accessibility for people with disabilities.

5.5.6 Copies of the consultation brochure and feedback survey will be sent to libraries close to the route in Lincolnshire and North East Lincolnshire, which are listed in **Table 1** of this SoCC. Access to these libraries is free and open to all members of the community. Immingham Library and Waltham Library are run by LincsInspire, an organisation that is committed to providing disability friendly and accessible services to local communities¹⁰. They also support the Government's Disability Confidence scheme¹¹. Louth Library and

⁵ <https://www.lincolnshire.gov.uk/employment-policies/diversity-inclusion-policy/7>

⁶ <https://www.northlincs.gov.uk/people-health-and-care/learning-disability-partnership/>

⁷ <https://www.nelincs.gov.uk/assets/uploads/2021/07/2019-ACommunityEngagementStrategy-Final.pdf>

⁸ <https://www.west-lindsey.gov.uk/sites/default/files/2022-02/Equality%20Strategy%202020-2024.pdf>

⁹ https://www.e-lindsey.gov.uk/media/4974/Public-Sector-Equality-Duty/pdf/Public_Sector_Equality_Duty.pdf?m=636390832841070000

¹⁰ A copy of LincsInspire's Accessibility statement can be read here: <https://www.lincsinspire.com/about/accessibility-statement/>

¹¹ <https://disabilityconfident.campaign.gov.uk/>

Mablethorpe Library also have disabled access, including a disabled toilet and lift.

5.5.7 Copies of consultation materials can also be made available in alternative formats and requests will be considered on a case-by-case basis. Digital materials will also be hosted on the VCR which is compliant with web accessibility standards.

Minority groups

5.5.8 Harbour Energy will liaise with the host local authorities to ensure that ethnic minority groups are represented in the consultation, and ensure they receive the right information to inform their feedback. This will include liaising with local authorities, to request they share project information with their dedicated working groups and forums, or request attendance to present the project at such groups. These are listed below.

- **North Lincolnshire County Council** – Black and minority ethnic networking group.
- **North Lincolnshire Council** – groups associated with North Lincolnshire’s Equality pledge.
- **North East Lincolnshire Council** – Sustainable Communities Board.
- **East Lindsey District Council** – groups associated with East Lindsey Council’s Equal Opportunities policy.
- **West Lindsey District Council** – groups identified as part of the WLDC’s Equality Strategy 2020-2024.¹²

5.5.9 JUSTLincolnshire¹³ will be contacted to provide them with information on the project and the upcoming statutory consultation. JUSTLincolnshire are an equality organisation based in Lincolnshire, who champion equality and help tackle discrimination.

5.5.10 As part of the contact with JUSTLincolnshire, it will be requested that JUSTLincolnshire share this information with their local networks and working groups, to ensure information reaches the targeted hard to reach group and encourages greater participation from ethnic minorities within the region.

Age

5.5.11 Local schools will be contacted as part of the postcard drop, inviting them to participate in the statutory consultation. Posters will also be sent to local schools along the corridor to advertise the consultation to students, as well as staff and parents.

Working families

5.5.12 Harbour Energy acknowledges the restraints experienced by working families who are restricted by working hours, and childcare arrangements. To ensure that the consultation is accessible for working families, the consultation events will be hosted at differing times and dates to encourage attendance, however where working families are unable to attend, they will

¹² <https://www.west-lindsey.gov.uk/sites/default/files/2022-02/Equality%20Strategy%202020-2024.pdf>

¹³ <https://www.justlincolnshire.org.uk/contact/>

be able to view the same consultation materials and project information on the VCR.

- 5.5.13 The VCR will be available for 24 hours a day and will host the same exhibition boards that would be present at the in-person events, alongside the project materials, including consultation brochure, survey, FAQ document and maps which are available to download.
- 5.5.14 Members of the public are also able to request hard copies of the materials via the project email address (vikingccspipeline@aecom.com), or phone line ([07917 986094](tel:07917986094)). The feedback response forms can be returned via freepost: Freepost VIKING CCS PIPELINE.

Traveller communities

- 5.5.15 Harbour Energy will liaise with local authorities to understand how best to engage traveller communities to ensure they receive the right information about the statutory consultation.
- 5.5.16 Harbour Energy will send an email notification to Lincolnshire Traveller Initiative¹⁴ (LTI) to inform them of the upcoming statutory consultation and invite them to share the information with their partnerships and community.
- 5.5.17 LTI is an organisation that works to reduce isolation experienced by traveller communities in Lincolnshire and aims to develop partnerships between Travellers and public agencies, local businesses and educational establishments. Although based in Lincoln, the LTI visit traveller communities around Immingham and Mablethorpe.

5.6 Stakeholder working groups

- 5.6.1 Two key themes have been identified as a particular focus for discussion with working groups based on consultation feedback to date. Following the statutory consultation, engagement will be facilitated around the following specific topics that were identified as being of significant interest.
- **Construction impacts:** feedback from non-statutory consultation revealed a concern from local communities on the localised impacts of construction, particularly the effects on noise and air pollution, traffic management.
 - **Lincolnshire Wolds Area of Outstanding Natural Beauty (AONB):** concerns were raised on the environmental impact of the project, particular due to the interface with the AONB.
- 5.6.2 Building on the feedback from non-statutory consultation, two working groups will be established, focusing on the construction of the Viking CCS pipeline and associated impacts on local communities, as well as the Lincolnshire Wolds AONB which will be conducted with statutory and technical stakeholders, including Environment Agency, Lincolnshire Wolds AONB, and Natural England.
- 5.6.3 The working groups will provide a forum for any concerns to be raised by members of the community, or technical stakeholders, and for the project team to provide more information on how impacts on construction and the

¹⁴ <https://lincsti.co.uk/>

AONB will be mitigated. Each working group will have a set agenda and meeting minutes will be taken and circulated to attendees following the meeting.

6. Next steps

6.1 Responding to the consultation

- 6.1.1 Responses to the statutory consultation will be accepted via a number of channels. In accordance with Section 49 of the Act, all responses received will be carefully considered and accounted for as part of the design evolution whilst the proposals are in their formative stage. Suggestions or recommendations for the pipeline route refinement will also be considered by the design teams.
- 6.1.2 A Consultation Report will be created to summarise the responses received during consultation and the account taken of those responses. The Consultation Report will be submitted with the DCO application and will be available for the public to read to understand how their comments were addressed.
- 6.1.3 Members of the public and other stakeholders will be able to submit their feedback on the proposals online via the response form hosted on the VCR, found on the project website (<https://consultation.vikingccs.co.uk/consultation>) or download a hard copy to submit via freepost.
- 6.1.4 Hard copies of the consultation response form will be available to collect at the consultation events and can be submitted on the day. Copies will also be available at the document inspection venues to return via freepost.
- 6.1.5 Consultees will also be able to request hard copies of the survey be sent to their home addresses, via the communication channels outlined in section 6.2.
- 6.1.6 Feedback can also be submitted via email or freepost, as per the channels outlined in section 6.2. If members of the public call in via phone, a member of the project team will advise the caller to formally put their feedback in writing and send back via email or post, as verbal feedback will be unable to be taken as an official response due to the possibility of misinterpretation.

6.2 Project contact information

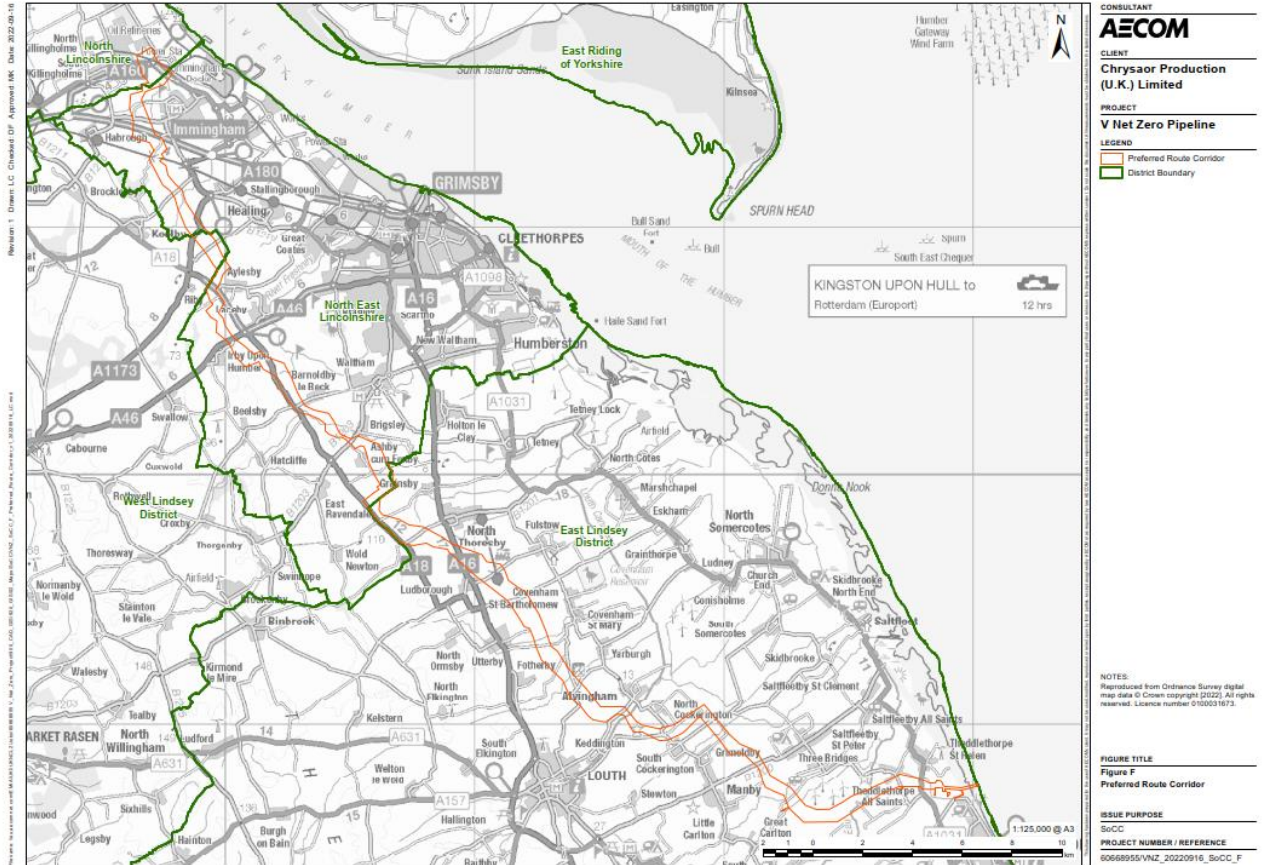
- 6.2.1 Contact with the project team during the statutory consultation can be made via the channels outlined below. A member of the project team will aim to respond to the inquiry within seven working days.
- Email: vikingccspipeline@aecom.com
 - Phone: 07917 986 094 (callers can leave their contact details, reason for calling, and a suitable time for a call back)
 - Freepost: Freepost VIKING CCS PIPELINE
 - Landowner submission box:
<https://consultation.vikingccs.co.uk/consultation/for-landowners>
 - Landowner telephone inquiries: 07706 322 850

6.3 Privacy policy

- 6.3.1 Harbour Energy's Privacy Policy can be read at the following link:
<https://consultation.vikingccs.co.uk/privacy-policy>
- 6.3.2 Data is only kept for as long as necessary to fulfil the purpose for which it was collected before securely deleting it.

Appendix A

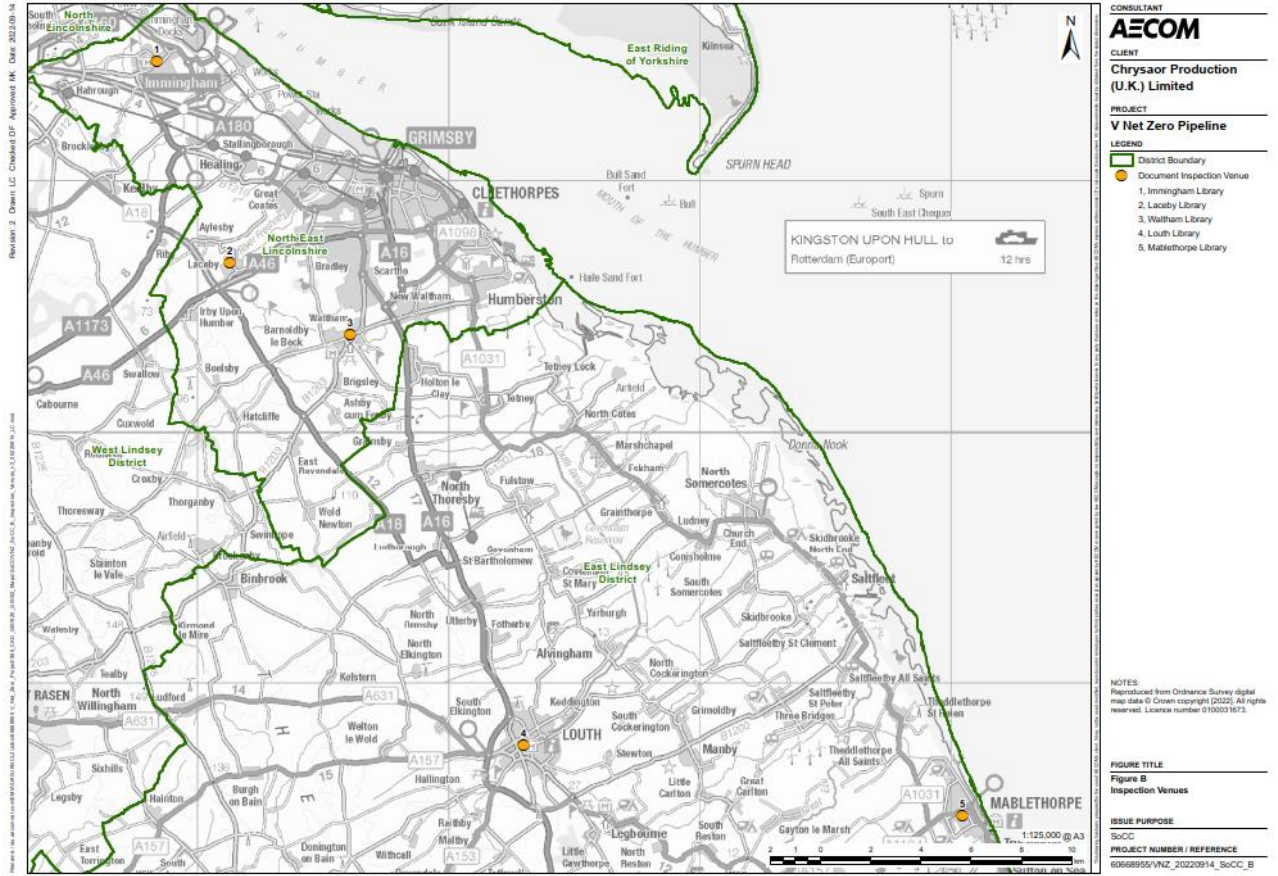
Map of the route corridor for the Viking CCS pipeline¹⁵



¹⁵ This map will be updated to show the preferred route at the launch of the statutory consultation

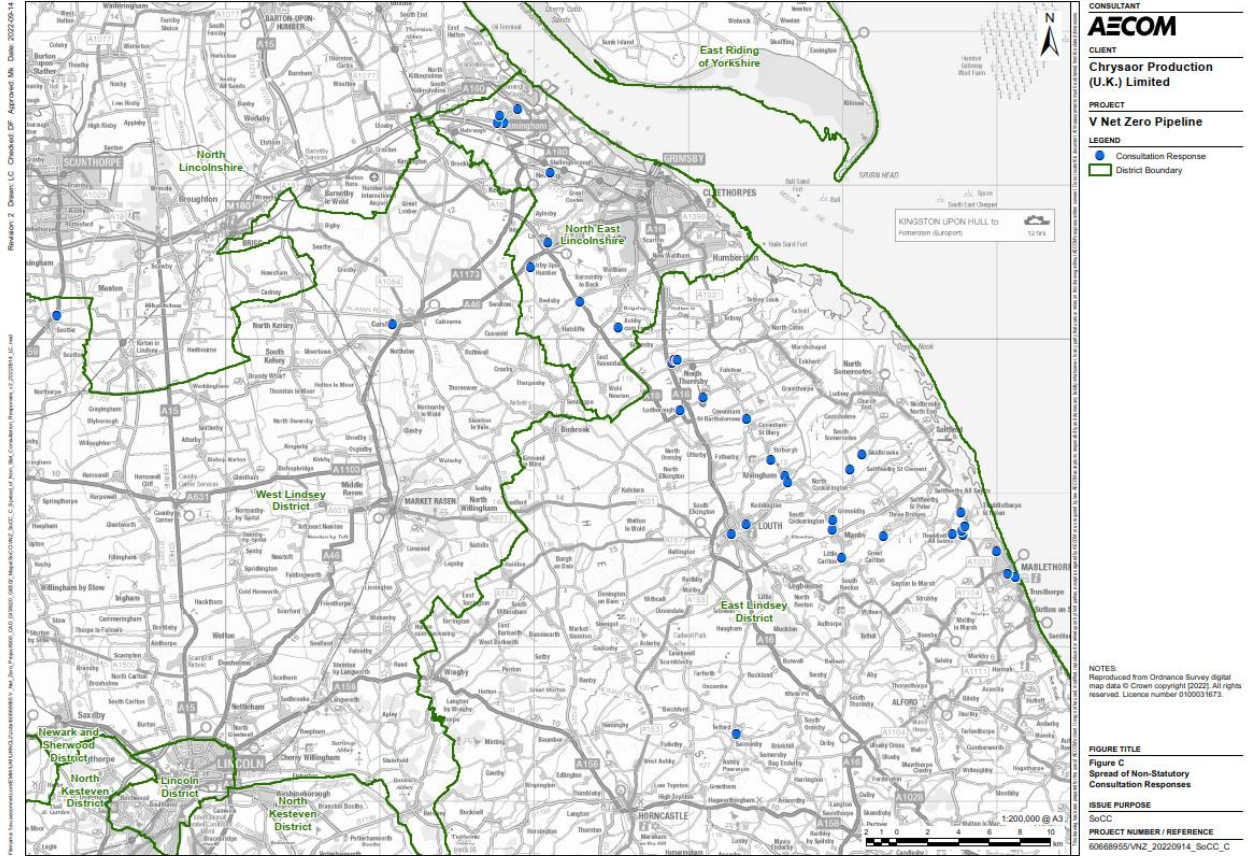
Appendix B

Map of document inspection venues



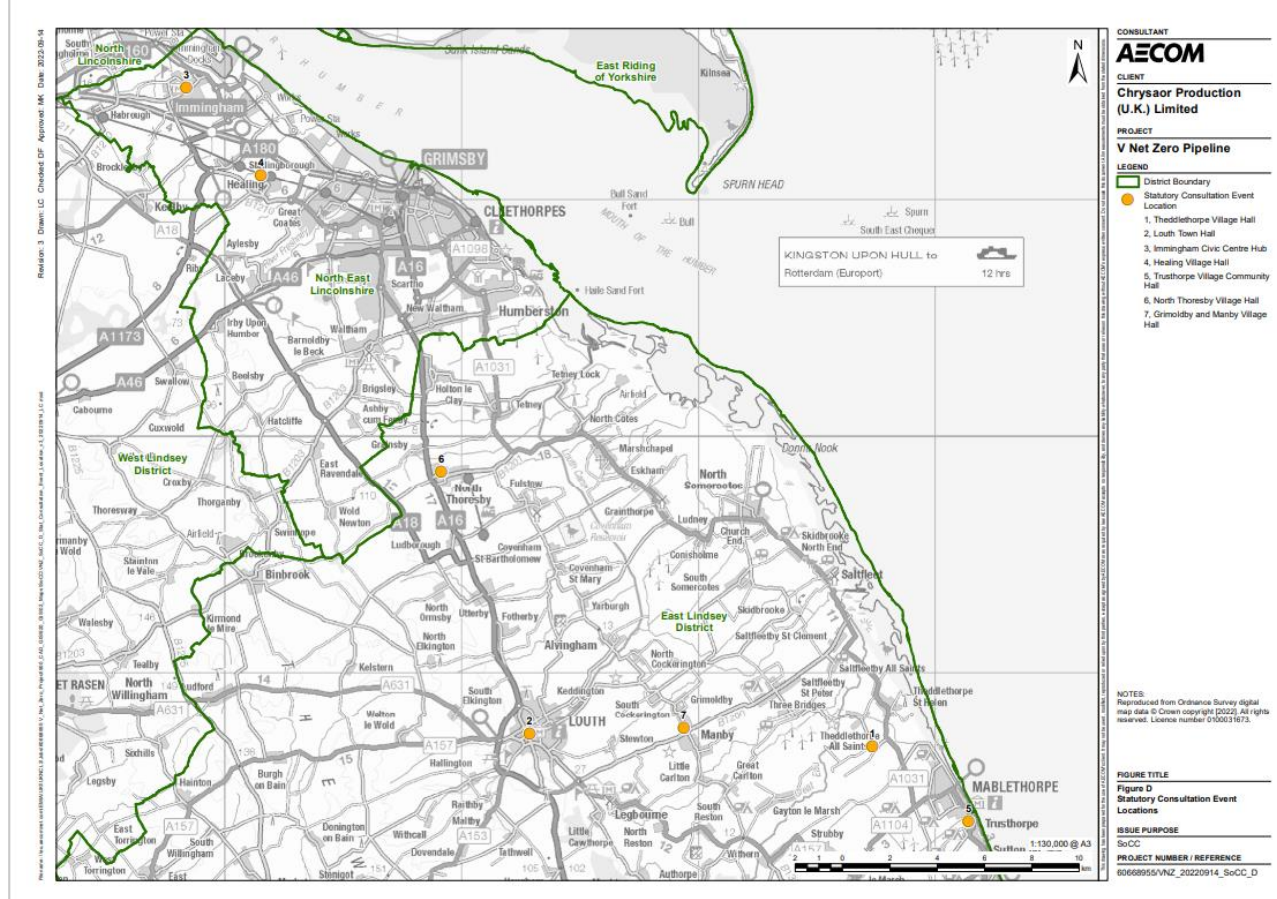
Appendix C

Spread of non-statutory consultation responses



Appendix D

Map of the locations of the statutory consultation events



Appendix E

Postcard distribution zone for statutory consultation: 3km buffer



