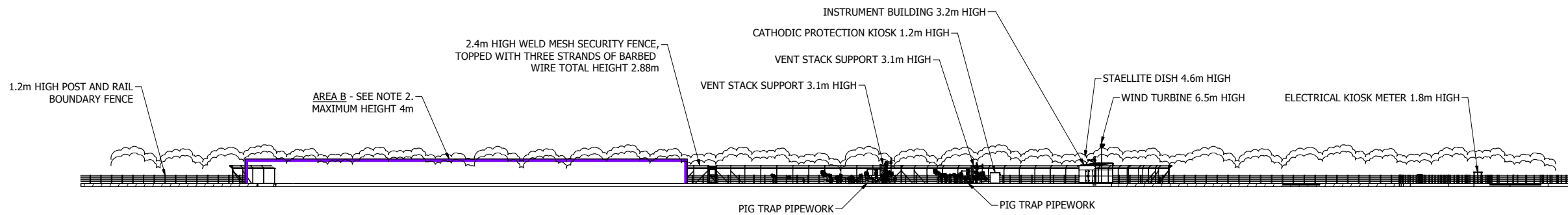
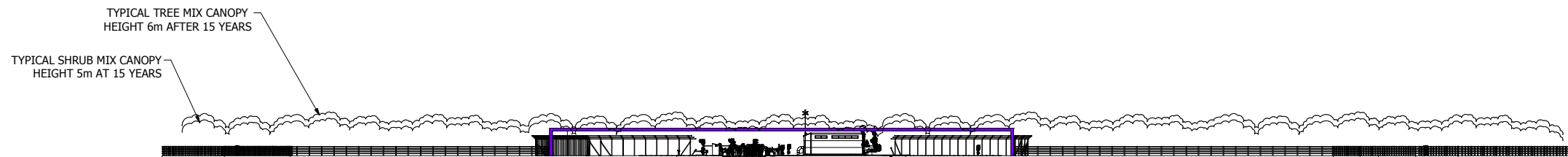


- NOTES:**
1. ALL DIMENSIONS SHOWN ARE APPROXIMATE.
 2. AREA B OUTLINED IN PURPLE IS FOR 3 PIG TRAPS AND FUTURE CONNECTIONS, PLUS ASSOCIATED INFRASTRUCTURE, THIS IS CONTROLLED BY REQUIREMENT 6.

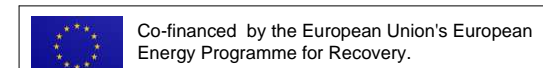


ELEVATION SECTION THROUGH D - D
(SCALE 1:400)



ELEVATION SECTION THROUGH C - C
(SCALE 1:400)

ALL LEVELS IN METRES
ALL DIMENSIONS IN MILLIMETRES
UNLESS OTHERWISE STATED
DO NOT SCALE
IF IN DOUBT ASK



CLIENT
nationalgrid
National Grid Carbon LTD
31 Homer Road
Solihull
West Midlands
B91 3LT

DRAWN Dave Pulley
DATE JUNE 2014
Tel : 01530 563000
Email: info@pretechltd.com
www.pretechltd.com

PROJECT
YORKSHIRE AND HUMBER
CARBON CAPTURE AND STORAGE
CROSS COUNTRY PIPELINE

TITLE
**CAMBLESFORTH MULTI-JUNCTION
ELEVATIONS (S + W)**

APFP REGULATION 5(2)(0)
PINS REFERENCE No: EN070001
DOCUMENT REFERENCE 2.27

ISSUE	DATE	DRAWN	CHECKED	APPROVED	ISSUE	DATE	DRAWN	CHECKED	APPROVED	ISSUE	DATE	DRAWN	CHECKED	APPROVED	ISSUE	DATE	DRAWN	CHECKED	APPROVED	ISSUE	DATE	DRAWN	CHECKED	APPROVED
AMENDMENT					AMENDMENT					AMENDMENT					AMENDMENT					AMENDMENT				

ISSUE	DATE	DRAWN	CHECKED	APPROVED
A	JUNE 2014	DMP	IB	JB
DCO SUBMISSION				

© National Grid Carbon Limited (2014)
All rights reserved. No part of this work may be reproduced or used in any form (including storage by electronic means) without the written permission of National Grid Carbon Limited.
Warning: Any unauthorised act in relation to the work may result in both a civil claim for damages and criminal prosecution.

SHEET 1 OF 1	SCALE SEE DRG	A1
DRG No 10-2754-GA-01-0305	ISSUE A	