

PLANTING TO BE ARRANGED AS INDICATED AND IN ACCORDANCE WITH RESTRICTIONS ON PLANTING PROXIMITY TO BURIED PIPELINES AND SECURITY FENCING

**TREE & SHRUB MIX**

TO BE PLANTED AT LEAST 6m AWAY FROM BURIED PIPELINES. 600-900mm 1+1 FEATHERED WHIPS PLANTED AT 1.5m SPACING IN GROUPS OF 2-3 OF EACH SPECIES.

TREES		PERCENTAGE
PEDUNCULATE OAK	QUERCUS ROBUR	40%
FIELD MAPLE	ACER CAMPESTRE	20%
SILVER BIRCH	BETULA PENDULA	10%
SYCAMORE	ACER PSEUDOPLATANUS	5%
CRAB APPLE	MALUS SYLVESTRIS	5%
<b>SHRUBS</b>		
HAWTHORN	CRATAEGUS MONOGYNA	10%
BLACKTHORN	PRUNUS SPINOSA	5%
HAZEL	CORYLUS AVELLANA	5%
<b>TOTAL</b>		<b>100%</b>

**SHRUB MIX**

TO BE PLANTED 1.5m - 6m FROM BURIED PIPELINES. (N.B. 3m GAP IN PLANTING OVER PIPELINES). 600-900mm 1+1 FEATHERED WHIPS PLANTED AT 1.5m SPACING IN GROUPS OF 2-3 OF EACH SPECIES.

SHRUBS		SPECIFICATION	PERCENTAGE
HAWTHORN	CRATAEGUS MONOGYNA		15%
BLACKTHORN	PRUNUS SPINOSA		15%
HAZEL	CORYLUS AVELLANA		15%
DOGWOOD	CORNUS SANGUINEA		15%
GUELDER ROSE	VIBURNUM OPULUS		15%
FIELD MAPLE	ACER CAMPESTRE		12.5%
PRIVET	LIGUSTRUM VULGARE		5%
HOLLY	ILEX AQUIFOLIUM	400-600mm 2L CG	5%
FIELD ROSE	ROSA ARVENSI		2.5%
<b>TOTAL</b>			<b>100%</b>

**HEDGE MIX**

HEDGE TO BE PLANTED AS 600-900mm 1+1 FEATHERED WHIPS PLANTED IN TWO STAGGERED ROWS 450mm APART WITH 6 PLANTS PER METRE.

SHRUBS		SPECIFICATION	PERCENTAGE
HAWTHORN	CRATAEGUS MONOGYNA		35%
BLACKTHORN	PRUNUS SPINOSA		30%
HAZEL	CORYLUS AVELLANA		10%
FIELD MAPLE	ACER CAMPESTRE		5%
CRAB APPLE	MALUS SYLVESTRIS		5%
DOGWOOD	CORNUS SANGUINEA		5%
GUELDER ROSE	VIBURNUM OPULUS		5%
HOLLY	ILEX AQUIFOLIUM	400-600mm 2L CG	5%
<b>TOTAL</b>			<b>100%</b>

**HEDGEROW TREES**

STANDARD TREES TO BE PLANTED ALONG HEDGE AS INDICATED

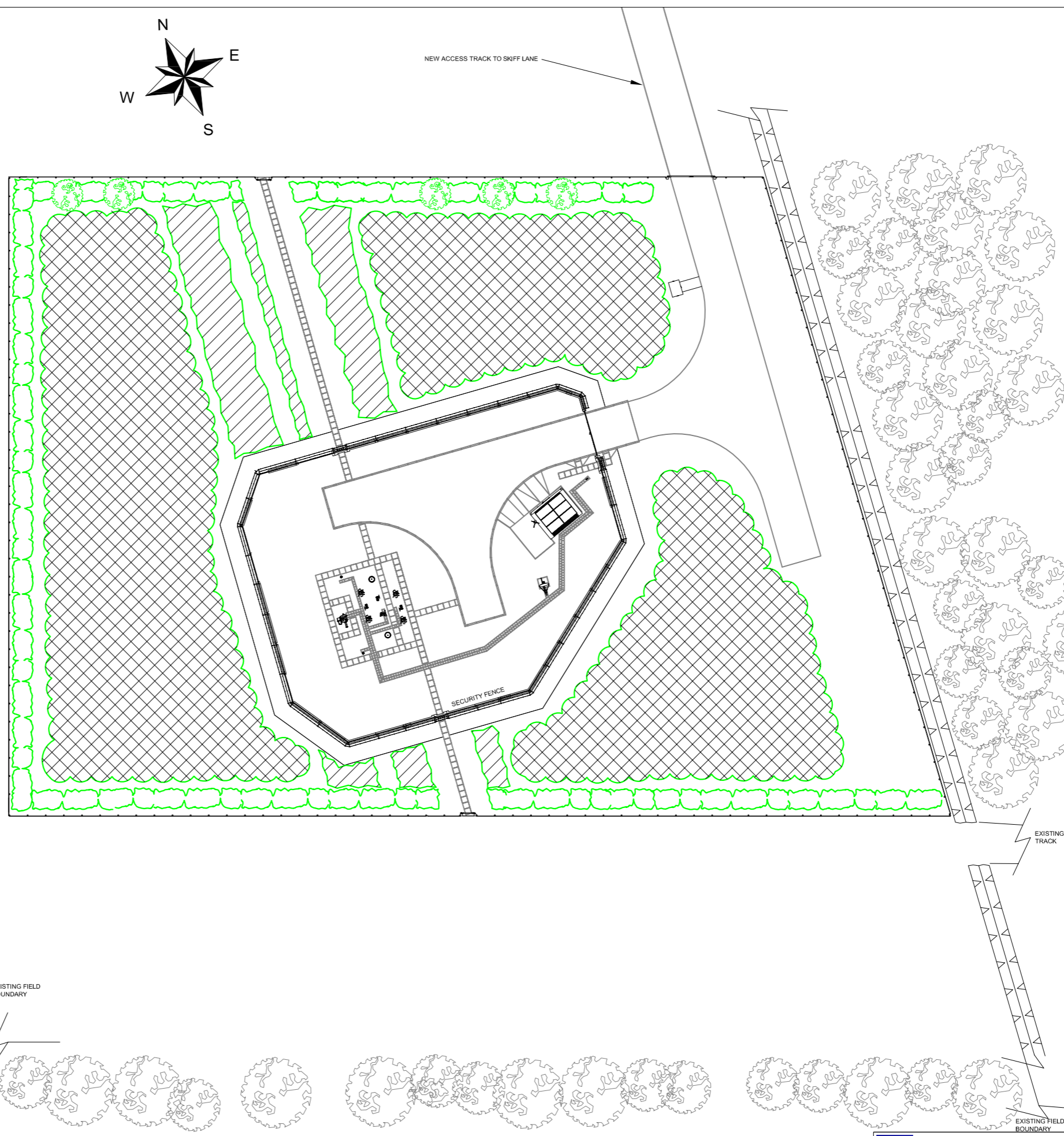
TREES			GIRTH	HEIGHT	No.
PEDUNCULATE OAK	QUERCUS ROBUR	STANDARD	8-10cm	2.5-3m	5

STANDARD TREES TO BE PLANTED AS BARE ROOTED STOCK. TREES SHALL BE FIXED TO SHORT STAKES, DRIVEN INTO THE GROUND AT THE BOTTOM OF THE TREE PIT EXCAVATIONS IN SUCH A POSITION TO ALLOW THE TREE TO BE PLANTED IN THE CENTRE OF THE PIT AND THE STAKE AT THE PREVAILING WINDWARD SIDE OF THE TREE IN ACCORDANCE WITH NGC/SP/ENV/2.



SCALE 1:150 @ A0.

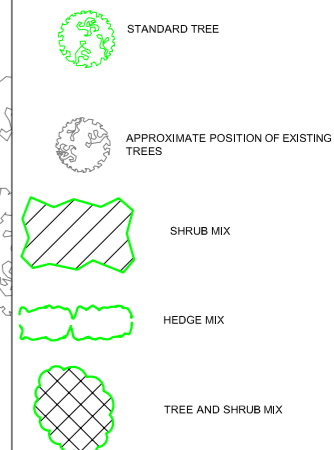
ISSUE	DATE	DRAWN	CHECKED	APPROVED	ISSUE	DATE	DRAWN	CHECKED	APPROVED	ISSUE	DATE	DRAWN	CHECKED	APPROVED	ISSUE	DATE	DRAWN	CHECKED	APPROVED	ISSUE	DATE	DRAWN	CHECKED	APPROVED																				
I					H					G					F					E					D					C					B					A	JUNE 2014	S.ROCKS	IB	JB
																							DCO SUBMISSION																					



**NOTES:**

- ALL PLANTING, MULCHING AND LANDSCAPE WORKS TO BE CARRIED OUT IN ACCORDANCE WITH NATIONAL GRID TECHNICAL SPECIFICATION FOR LANDSCAPE WORKS NGC/SP/ENV/2 INCLUDING TREE PLANTING GUIDELINE.
- ALL PLANTS SHALL BE OF BRITISH ORIGIN AND PREFERABLY LOCAL PROVENANCE.
- ALL PLANTS SHALL COMPLY WITH HTA NATIONAL PLANT SPECIFICATION DOCUMENT.
- ALL TREES AND SHRUBS SHALL CONFORM TO BS 3938; PART 1 NURSERY STOCK SPECIFICATION FOR TREES AND SHRUBS. TREES WITH VIGOROUS EVENLY DEVELOPED CROWNS, SINGLE ORIGINAL LEADER AND EVEN FIBROUS ROOT SYSTEM. SHRUBS WELL BRANCHED, WELL ROOTED STURDY PLANTS.
- SHRUBS ONLY TO BE PLANTED WITHIN 3m OF BURIED PIPES. NO PLANTING WITHIN 2m OF ABOVE GROUND INSTALLATION SECURITY FENCING.
- POST AND WIRE RABBIT PROOF FENCING SHALL BE ERECTED AROUND THE ENTIRE PLANTING AREA IN ACCORDANCE WITH NGC/SP/ENV/2. WITH RABBIT PROOF ACCESS GATES WHERE REQUIRED.
- RABBIT PROTECTION PROVIDED FOR THE TREE AND SHRUB PLANTING SHALL BE RABBIT PROOF GUARDS IN ACCORDANCE WITH NGC/SP/ENV/2.
- A FIVE YEAR DEFECTS AND MAINTENANCE PERIOD SHALL APPLY DURING WHICH TIME THE NEW PLANTING SHALL BE MAINTAINED IN ACCORDANCE WITH NATIONAL GRID MANAGEMENT PROCEDURE FOR MAINTENANCE OF LANDSCAPED SITES NGC/MP/ENV/3 INCLUDING REPLACEMENT PLANTING OF DEAD DYING AND DISEASED STOCK.

**KEY:**



Background reproduced from Ordnance Survey Data, with the permission of the Controller of Her Majesty's Stationery Office. CROWN COPYRIGHT RESERVED. (National Grid Carbon Limited - 100055005)

DRAWN	S.ROCKS
DATE	JUNE 2014
Tel	01530 963000
Email	info@prentechtd.com
www	www.prentechtd.com

**nationalgrid**

National Grid Carbon LTD  
31 Homer Road  
Sollihull  
West Midlands  
B91 3LT

PROJECT YORKSHIRE AND HUMBER  
CARBON CAPTURE AND STORAGE  
CROSS COUNTRY PIPELINE

TITLE TOLLINGHAM BLOCK VALVE  
PLANTING DRAWING  
APFP REGULATION 5(2)(0)  
PINS REFERENCE No: EN070001  
DOCUMENT REFERENCE 2.37

© National Grid Carbon Limited (2014)  
All rights reserved. No part of this work may be reproduced or used in any form (including storage by electronic means) without the written permission of National Grid Carbon Limited. Warning: Any unauthorised act in relation to the work may result in both a civil claim for damages and criminal prosecution.