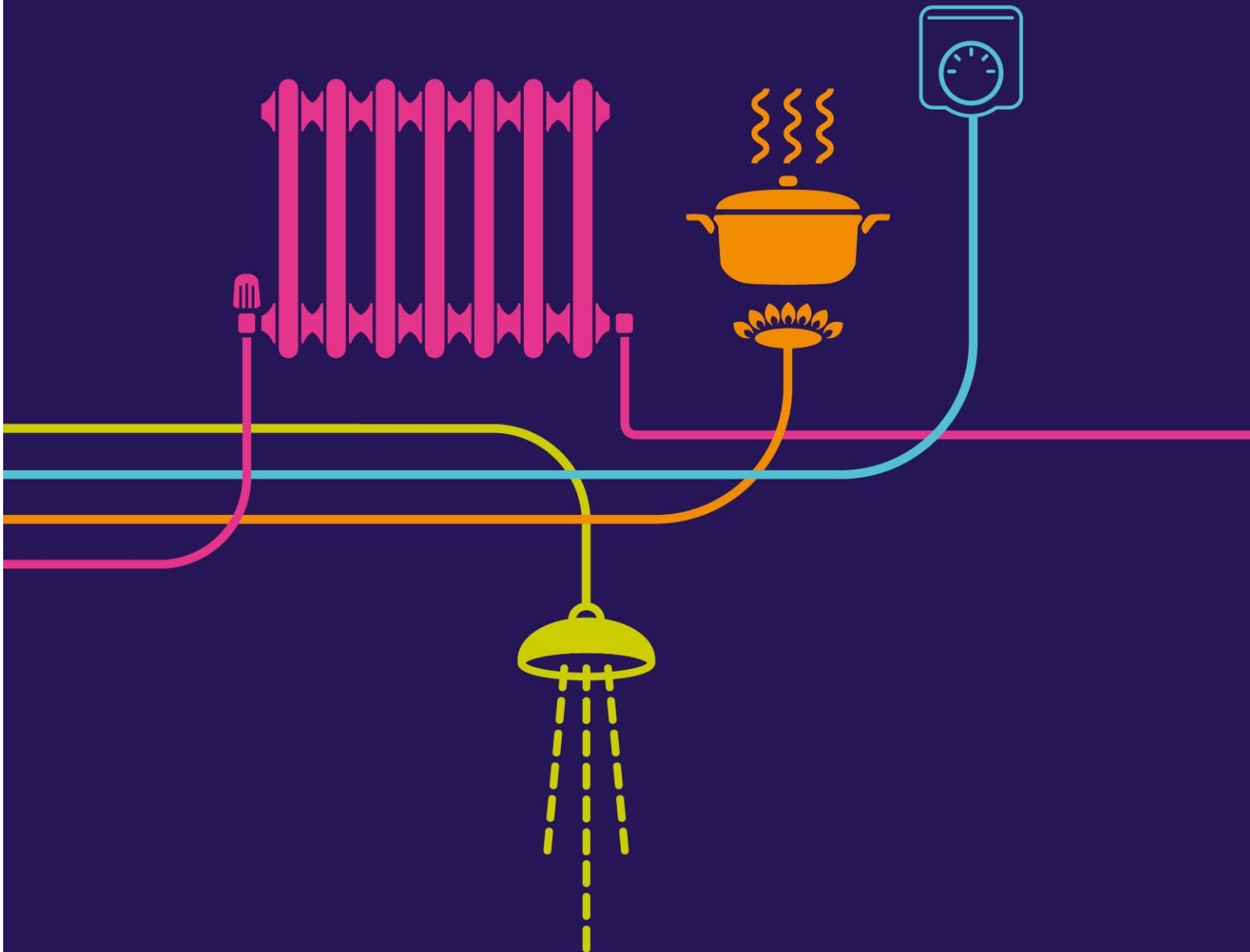


# Schedule of Amendments to DCO and Plans

## River Humber Gas Pipeline Replacement Project





**NATIONAL GRID GAS PLC – RIVER HUMBER GAS PIPELINE REPLACEMENT PROJECT  
PINS REFERENCE: EN060004**

**SCHEDULE OF AMENDMENTS TO THE DRAFT DEVELOPMENT CONSENT ORDER AND PLANS  
DOC REF 8.5E**

<b>Date submitted to PINS</b>	<b>Article</b>	<b>Change</b>	<b>Reason for change</b>
02.11.15	Article 2 ( <i>Interpretation</i> )- definition of 'address'	Add in definition of "address" including emails	In response to ExA's first written question 14.28
02.11.15	Article 2 ( <i>Interpretation</i> ) – definition of 'commence'	Delete the words "demolition, site clearance," and "erection of contractors' work compound".  Insert the words "diversion or laying of services and environmental mitigation measures"	In response to ExA's first written question 7.1. These amendments ensure that noise-generating activities such as work compound establishment and site clearance will require approval of details under the requirements. The definition is now consistent with Hinckley Point C Connection and Willington C Gas Pipeline Order 2014 where a similar approach was taken in terms of allowing detailed staging to be approved at a later date but limiting the 'pre-commencement' works in the definition of 'commence'.
02.11.15	Article 2 ( <i>Interpretation</i> ) – definition of 'maintain'	Delete the words "decommission" and "demolish".	In response to ExA's first written question 14.9.
02.11.15	Article 2 ( <i>Interpretation</i> ) – definition of 'National Grid Gas'	Add the words "or any successor company performing the same function"	In response to ExA's first written question 14.10

Date submitted to PINS	Article	Change	Reason for change
02.11.15	Article 3 ( <i>Application, modification and disapplication of legislative provisions</i> )	Amended to disapply drainage and flood byelaws so as to give precedence to Environment Agency protective provisions added to Schedule 10	Protective provisions under negotiation with Environment Agency.
02.11.15	New article 9 ( <i>Transfer of benefit of Order</i> )	Add in article allowing the benefit of the Order to be transferred	In response to ExA's first written question 14.14
02.11.15	Article 11(4)(a) ( <i>Power to alter layout etc. of streets</i> )	Remove the words "demolish, remove, replace and relocate any bus shelter and associated bus stop infrastructure"	In response to ExA's first written question 14.17
02.11.15	32(1) ( <i>Statutory Undertakers</i> )	Insert the words ' <u>Subject to the provisions of Schedule 10 (Protective Provisions)</u> the undertaker may-'	Amended in response to representations by Anglian Water dated 26 June 2015
02.11.15	32(2) ( <i>Statutory Undertakers</i> )	Delete	No longer necessary as a result of the amendment to 32(1) above
02.11.15	Article 43 ( <i>Certification of plans etc.</i> )	Add the words "any other plans or document referred to in this order".	In response to ExA's first written question 14.2
02.11.15	Article 47 ( <i>Procedure in relation to certain approvals etc.</i> )	Schedule reference corrected to 12	Corrected in response to ExA's first written question 14.29
02.11.15	Schedule 1 ( <i>Authorised Development</i> )	Work No 1C – amended to 750m	Corrected in response to ExA's first written question 1.4

<b>Date submitted to PINS</b>	<b>Article</b>	<b>Change</b>	<b>Reason for change</b>
02.11.15	Schedule 1 ( <i>Authorised Development</i> )	Work No 2B – amended to 10m	Corrected in response to ExA's first written question 1.4
02.11.15	Schedule 1 ( <i>Authorised Development</i> )	Work No. 2C(d) – delete “two transformer rectifier kiosks” and insert “up to four transformer rectifier kiosks”	Refinements to the scheme design
02.11.15	Schedule 1 ( <i>Authorised Development</i> )	Work No. 3B – delete “two transformer rectifier kiosks” and insert “up to four transformer rectifier kiosks”	Refinements to the scheme design
02.11.15	Schedule 1 ( <i>Authorised Development</i> )	Spoil treatment and storage added to Work No. 5A	In response to ExA's first written question 14.31
02.11.15	Schedule 1 ( <i>Authorised Development</i> )	Updates to reflect agreement with North Lincolnshire Council to make certain passing places suitable for permanent adoption	Passing places to be made permanent if possible at the request of North Lincolnshire Council
02.11.15	Requirement 5 ( <i>Site Water Management Plan</i> ) of Schedule 3 ( <i>Requirements</i> )	Addition of ground water mitigation measures	As requested by Environment Agency
02.11.15	Requirement 15 ( <i>construction traffic and accesses</i> ) of Schedule 3 ( <i>Requirements</i> )	Amendments to highways requirements	At the request of East Riding of Yorkshire
02.11.15	Requirement 15 ( <i>construction traffic and</i>	Highways England added as consultation body	At request of Highways England letter dated 21 September 2015

Date submitted to PINS	Article	Change	Reason for change
	<i>accesses) of Schedule 3 (Requirements)</i>		
02.11.15	Requirement 19 ( <i>Ecological Surveys</i> ) of Schedule 3 ( <i>Requirements</i> )	New requirements inserted for water vole and badger surveys	At the request of Natural England. Precedent in The Able Marine Energy Park Development Consent Order 2014
02.11.15	Requirement 21 ( <i>Amendments to approved details</i> ) of Schedule 3 ( <i>Requirements</i> )	Delete the words "or general accordance" Add in new 20(2) - "Any amendment or variation from the approved details must be in accordance with the principles and assessment set out in the environmental statement".	In response to ExA's first written question 14.46
02.11.15	Schedule 5 ( <i>Streets subject to alteration of layout</i> )	Amendments to descriptions of various works	Passing places to be made permanent if possible at the request of North Lincolnshire Council
02.11.15	Schedule 5 ( <i>Streets subject to alteration of layout</i> )	Updates to reflect agreement with North Lincolnshire Council to make certain passing places suitable for permanent adoption	Requested by North Lincolnshire Council
02.11.15	Schedule 8 ( <i>Land of which temporary possession may be taken</i> )	Updates to plot numbers to reflect changes to BOR/land plans on 23.09.15	Consistency with plans
02.11.15	Schedule 9 ( <i>Deemed Marine Licence</i> )	Various amendments to DML (see tracked changed version)	As agreed with the Marine Management Organisation

Date submitted to PINS	Article	Change	Reason for change
02.11.15	Schedule 10 ( <i>Protective Provisions</i> )	Part 3 Protective provisions for Environment Agency added	As requested by the Environment Agency
02.11.15	Schedule 10 ( <i>Protective Provisions</i> )	Part 4 Protective provisions for Anglian Water added	As requested by Anglian Water
02.11.15	Schedule 10 ( <i>Protective Provisions</i> )	Part 5 Protective Provisions for Centrica added	As requested by Centrica
02.11.15	Schedule 10 ( <i>Protective Provisions</i> )	Part 6 – placeholder added for protective provisions for Network Rail	As requested by Network Rail
27.11.15	Article 32 ( <i>Interpretation</i> )	Paragraph 32(2) deleted	Wording not required – originally included in error
27.11.15	Article 43 ( <i>Certification of plans etc</i> )	Deletion of the words “(f) any other plans or documents referred to in this Order”	In accordance with Advice Note 15
27.11.15	Schedule 1 ( <i>Authorised Development</i> )	Amendment to the description of the tunnel in Works 1A to 1C from “concrete sleeve tunnel” to “concrete-lined sleeve tunnel”	To provide greater clarity and accuracy
27.11.15	Schedule 1 ( <i>Authorised Development</i> )	Amendment of 2 to read “Such associated development within the Order limits as may be necessary and expedient for the purposes of or in connection with the construction of the above Work Nos. or any of them ( <del>which falls within the scope of the environmental Statement which are in accordance with the principles and assessment set out in the environmental statement</del> ) consisting of- ”	At the request of the Examining Authority.

<b>Date submitted to PINS</b>	<b>Article</b>	<b>Change</b>	<b>Reason for change</b>
27.11.15	Schedule 1 <i>(Authorised Development)</i>	Work 4(o) amended to include reference to recharging	As agreed with the Environment Agency
27.11.15	Requirement 4 <i>(Detailed Design Approval)</i>	Addition of Work No 10 to paragraph 4(1)(b)	As requested by Examining Authority
27.11.15	Requirement 5 <i>(Site Water Management Plan)</i>	Addition of requirement for the approved site water management plan to be based on the initial site water management plan submitted with the application	As requested by Examining Authority
27.11.15	Requirement 5 <i>(Site Water Management Plan)</i>	Amendment in sub-paragraph 5(2)(c) to delete the words "identified in consultation" and replace with "agreed"	As requested by Examining Authority
27.11.15	Requirement 6 <i>(Site Waste Management Plan)</i>	Addition of list of matters items which must be included in the approved site waste management plan	As requested by Examining Authority
27.11.15	Requirement 12 <i>(Construction Environmental Management Plan)</i>	Addition to 12(1) of the words "no stage of the"	For consistency with the other requirements for approval of plans
27.11.15	Requirement 12 <i>(Construction Environmental Management Plan)</i>	Addition of item 12(2)(j) Flood Incident Response Plan	As requested by Examining Authority and Environment Agency



Date submitted to PINS	Article	Change	Reason for change
27.11.15	Requirement 12 ( <i>Construction Environmental Management Plan</i> )	Addition of item 12(2)(k) Marsh harrier mitigation strategy	As agreed with RSPB
27.11.15	Requirement 15 ( <i>Construction Environmental Management Plan</i> )	Addition to 15(1) of the words "no stage of the"	For consistency with the other requirements for approval of plans
27.11.15	Requirement 19 ( <i>Ecological Surveys</i> )	Addition of wording 'or may be affected'	As agreed with Natural England
27.11.15	Schedule 10 ( <i>Protective Provisions</i> )	Part 3 Protective provisions amended	As agreed with the Environment Agency
13.01.16	Article 2 ( <i>Interpretation</i> ), definition of "initial CEMP"	Addition of definition of "initial CEMP"	In response to ExA's second written question 26
13.01.16	Article 2 ( <i>Interpretation</i> ), definition of "initial TMP"	Addition of definition of "initial TMP"	In response to ExA's second written question 30
13.01.16	Article 8 ( <i>Benefit of Order</i> )	Addition that the article is subject to article 9 ( <i>Transfer of benefit of Order</i> )	Clarity

Date submitted to PINS	Article	Change	Reason for change
13.01.16	Article 43 ( <i>Certification of plans etc.</i> )	Addition of "initial CEMP" and "initial TMP" to list of documents to be certified in article 43(1)	In response to ExA's second written questions 26 and 30
13.01.16	Schedule 1 ( <i>Authorised Development</i> ), paragraph 1, Work No. 6	Amendment to description of Work No. 6. Work Nos. 6H, 6M, 6N, 6O, 6P and 6Q amended to delete 'temporary'. 'Temporary' added to description of Work No. 6E	To reflect agreement with North Lincolnshire Council in relation to the permanent adoption of certain passing places
13.01.16	Schedule 3 ( <i>Requirements</i> ), paragraph 1 ( <i>Interpretation</i> )	Addition of definition of "initial site water management plan"	In response to ExA's second written question 28
13.01.16	Schedule 3 ( <i>Requirements</i> ), paragraph 4 ( <i>Detailed design approval</i> )	Deletion of "tunnel construction methodology" from (1).	Not necessary as this is included in the detail to be submitted for Work No. 1 under Requirement 4(1)(a). This deletion was agreed by North Lincolnshire Council on 28 January
13.01.16	Schedule 3 ( <i>Requirements</i> ), paragraph 5 ( <i>Site Water Management Plan</i> )	Addition of requirement for the site water management plan to be "substantially in accordance with" the initial site water management plan. Deletion of "submitted with the application".	In response to ExA's second written question 28
13.01.16	Schedule 3 ( <i>Requirements</i> ), paragraph 5 ( <i>Site Water Management Plan</i> )	Further details of contents of the site water management plan added.	As agreed with the Environment Agency

Date submitted to PINS	Article	Change	Reason for change
13.01.16	Schedule 3 ( <i>Requirements</i> ), paragraph 9 ( <i>Agricultural land drainage</i> )	Addition of "to be agreed with the relevant planning authority" to 9(3).	Clarity
13.01.16	Schedule 3 ( <i>Requirements</i> ), paragraph 11 ( <i>Construction hours</i> )	Addition of "within the Order limits" after spoil movement in (3)(a)	In response to ExA's second written question 32
13.01.16	Schedule 3 ( <i>Requirements</i> ), paragraph 12 ( <i>Construction Environmental Management Plan</i> )	Amendment of (2) to read "The construction environmental management plan must be substantially in accordance with, and include the following plans and strategies from, the initial CEMP".	In response to ExA's second written question 26
13.01.16	Schedule 3 ( <i>Requirements</i> ), paragraph 13 ( <i>Noise</i> )	Addition of "monitoring to be undertaken at identified sensitive receptors pre- and during construction".	In response to ExA's second written question 33
13.01.16	Schedule 3 ( <i>Requirements</i> ), paragraph 15 ( <i>Construction and traffic accesses</i> )	Addition of requirement for the traffic management plan to be "substantially in accordance with the initial TMP".	In response to ExA's second written question 30
13.01.16	Schedule 3 ( <i>Requirements</i> ), paragraph 18	Addition of "construction work" to list of activities which cannot be undertaken above ground within Work No. 11.	At request of RSPB

Date submitted to PINS	Article	Change	Reason for change
	<i>(Environmental mitigation land)</i>		
13.01.16	Schedule 3 ( <i>Requirements</i> ), paragraph 18 ( <i>Environmental mitigation land</i> )	Amendment to clarify that no storage, use of plant, construction work or other development may take place "above ground" within Work No. 11.	Clarity
13.01.16	Schedule 3 ( <i>Requirements</i> ), paragraph 19 ( <i>Ecological Surveys</i> )	Deletion of "existing or further" from (1).	In response to ExA's second written question 34
13.01.16	Schedule 5 ( <i>Streets subject to alteration of layout</i> )	Amendments to reflect permanent retention of certain passing places.	As agreed with North Lincolnshire Council
13.01.16	Schedule 10 ( <i>protective provisions</i> ), Part 3 ( <i>For the protection of the Environment Agency</i> )	Part 3 protective provisions amended	As agreed with the Environment Agency
17.02.16	Article 20 ( <i>Compulsory acquisition of land</i> )	Sub-paragraphs (2) and (3) deleted	Correction of inconsistency in model provisions - adequate powers provided by article 22 ( <i>Extinguishment and suspension of private rights</i> ).
17.02.16	Article 21 ( <i>Compulsory</i> )	Sub-paragraphs (2) and (5) deleted	Correction of inconsistency in model provisions – adequate powers provided by article 22 ( <i>Extinguishment and suspension of private rights</i> ).

Date submitted to PINS	Article	Change	Reason for change
	<i>acquisition of rights)</i>		
17.02.16	Article 26 ( <i>Temporary use of land for carrying out of authorised development</i> )	Minor amendments made to wording	As requested in ExA's DCO
17.02.16	Schedule 1 ( <i>Description of Works</i> ), Work 4B	(m) amended to include the installation of a temporary marshalled gate on East Marsh Road south of Fir Tree Farm to be maintained during the construction of the authorised development.	To reflect additional mitigation measures accepted by PINS and as agreed with Natural England and RSPB.
17.02.16	Schedule 1 ( <i>Description of Works</i> ), Work No. 4D	(e) added to include the installation and maintenance of a vehicular gate at East Halton Skitter for the operational lifespan of Work No. 1.	To reflect additional mitigation measures accepted by PINS and as agreed with Natural England and RSPB.
17.02.16	Schedule 1 ( <i>Description of Works</i> ), Work No. 13	New Work No. 13 added to include additional mitigation land and the installation of a permanent vehicular gate off East Marsh Road	To reflect additional mitigation measures accepted by PINS and as agreed with Natural England and RSPB.
17.02.16	Schedule 2 ( <i>Plans</i> ), part 2	Change to numbering of land plans	Amended to reflect amendments to land plans
17.02.16	Schedule 3 ( <i>Requirements</i> ), Requirement 10	Subparagraph (2) updated and subparagraphs (4) and (5) added to reflect archaeological mitigation strategy	As agreed with North Lincolnshire Council
17.02.16	Schedule 3 ( <i>Requirements</i> ), Requirement 18	Requirement 18 ( <i>Environmental mitigation land</i> ) amended to reflect agreed mitigation and management to take place within Work No. 13	To reflect the additional mitigation measures accepted by PINS and as agreed with Natural England and RSPB.

Date submitted to PINS	Article	Change	Reason for change
17.02.16	Schedule 8 ( <i>Land of which temporary possession may be taken</i> )	Plot numbers updated	To reflect updates to the book of reference and land plans including the addition of the new plots for the mitigation land.
17.02.16	Schedule 9 ( <i>deemed marine licence</i> )	Definition of 'authorised development' amended so it is included in paragraph 1 rather than paragraph 3 and paragraph 3(2) amended.	As agreed with the MMO.
17.02.16	Schedule 10 ( <i>Protective provisions</i> ), Part 1 ( <i>For the protection of electricity, gas, water and sewerage undertakers</i> )	Amendment to article 2 to clarify that these provisions do not apply to Anglian Water and Centrica who have the benefit of bespoke protective provisions	Clarity
17.02.16	Schedule 10 ( <i>Protective provisions</i> ), Part 1 ( <i>For the protection of electricity, gas, water and sewerage undertakers</i> )	Amendments to article 2 ( <i>interpretation</i> )	Correction of errors
17.02.16	Schedule 10 ( <i>protective provisions</i> ), Part 3 ( <i>For the protection of the</i>	Part 3 protective provisions amended	As agreed with the Environment Agency

Date submitted to PINS	Article	Change	Reason for change
	<i>Environment Agency)</i>		
17.02.16	Schedule 10 ( <i>protective provisions</i> ), Part 5 ( <i>For the protection of Centrica</i> )	Part 5 protective provisions amended	As agreed with Centrica
04.03.16	Schedule 1 ( <i>Authorised Works</i> ), paragraph 2 ( <i>Further Associated Development</i> )	Wording "which are in accordance with the principles and assessment set out in the environmental statement" changed to "which fall within the scope of the works assessed by the environmental statement".	In response to Q17 of Rule 17 Letter dated 26 February 2016 and for consistency with Advice Note 15 and made DCOs.
04.03.16	Schedule 10 ( <i>Protective provisions</i> ), Part 5 ( <i>For the protection of Centrica</i> )	Addition of "decommission" to paragraph 31(1)	As agreed with Centrica
04.03.16	Schedule 10 ( <i>Protective provisions</i> ), Part 6 ( <i>For the Protection of Network Rail</i> )	Deleted.	Commercial agreement to be entered into with Network Rail and protective provisions not required in the Order.

**SCHEDULE OF AMENDMENTS TO LAND PLANS (Doc Ref 2.1C)**

<b>Date submitted to PINS</b>	<b>Sheet</b>	<b>Change</b>	<b>Reason for change</b>
23.09.15	All	Boundary changed from dotted line to red line	In response to request of Examining Authority in Section 51 Advice dated 12 May 2015
23.09.15	Various	Further insets added as required	Clarity
23.09.15	1	Reduction of order limits of plot 6 at Sewage Works	Area no longer required as a result of refinements to the scheme design and reduction in area for Work No 9B
23.09.15	2	Inset added for Plot 24 on Land Plan L003	In response to request of Examining Authority in Rule 6 letter dated 22 July 2015
23.09.15	6	Plots 62, 63, 64 realigned to the south due to realignment of the order limits at Work No 12 (Water Abstraction Point)	Correction of error in the original location of the abstraction pipe
23.09.15	8	Inset added for Plot 100 on Land Plan L009	In response to request of Examining Authority in Rule 6 letter dated 22 July 2015
23.09.15	8	Plots 95, 96, 99 removed due to reduction of the order limits at Work No 6Q (Temporary Access Works)	Area no longer required as a result of refinements to the scheme design
27.11.15	16	Plot 128 removed due to reduction of order limits at Work No 6M (Temporary Access Works)	Area no longer required as a result of refinements to the scheme design
17.02.16	Key Plan	Updated to include new sheet and changed red line	Reflect changes to the Order limits accepted by PINS
17.02.16	1	Plots 4 and 5 merged with plot 3	Plots form part of publically maintainable highway
17.02.16	2	Plots 11 and 30 merged with plot 16	Plots form part of publically maintainable highway



<b>Date submitted to PINS</b>	<b>Sheet</b>	<b>Change</b>	<b>Reason for change</b>
17.02.16	2	Plot 15 realigned	Clarity
17.02.16	2	Plots 37, 41 and 45 merged with plot 35	Plots form part of publically maintainable highway
17.02.16	2	Plot 35 split into plots 35.1 and 35.2	To reflect different land ownerships
17.02.16	2	Amended to reflect changed Order limits and add plot 132	To reflect extension to the Order limits for the additional mitigation land
17.02.16	2 & 3	Plot 27 split into 27.1 and 27.2	Plot split to reflect 2 land registry titles
17.02.16	2 & 3	Plot 29 merged with plot 22	Redrawing of plot 24 allowed these two plots to be merged
17.02.16	2 & 3	Plots 36 and 40 merged with plot 39 and plot 39 split into 39.1 and 39.2	Simplification
17.02.16	2 & 3	Plot 54 split into 54.1 and 54.2	To reflect two separate land registry titles
17.02.16	7 & 8	Plot 98 merged with plot 89	Simplification as same class of rights sought
17.02.16	7 & 8	Plots 90 and 97 merged with plot 91	Simplification as same class of rights sought
17.02.16	11 & 12	Plot 111 realigned	To match amended redline boundary
17.02.16	11 & 12	Plots 113 and 114 merged with plot 112	Simplification as same class of rights sought
17.02.16	12	Plot 116 split into 116.1 and 116.2	Reflects newly registered land ownership of eastern portion of plot.
17.02.16	12	Plot 120 merged with plot 116.1	Simplification as in same ownership and same class of rights sought
17.02.16	12	Plot 118 deleted	No longer required for Project
17.02.16	17	New sheet added to show new plots 132 and 133.	To reflect extension to the Order limits for the additional mitigation land

<b>Date submitted to PINS</b>	<b>Sheet</b>	<b>Change</b>	<b>Reason for change</b>
17.02.16	Various	Further insets added and labels clarified as required	Clarity
17.02.16	All	Plot tables updated	To reflect amendments made

**SCHEDULE OF AMENDMENTS TO WORKS PLANS (Doc Ref 2.2C)**

<b>Date submitted to PINS</b>	<b>Sheet No.</b>	<b>Change</b>	<b>Reason for change</b>
23.09.15	All	Field numbers used in the bird surveys added	In response to request of Examining Authority in Rule 6 letter dated 22 July 2015
23.09.15	W001	Font sizes of Works No labels in yellow increased so legible when printed at A1 and relevant road names added along the site access routes	In response to request of Examining Authority in Rule 6 letter dated 22 July 2015
27.11.15	W004	Reduction of the order limits at Work No 6M (Temporary Access Works)	Area no longer required as a result of refinements to the scheme
23.09.15	W006	Reduction of the order limits at Work No 6Q (Temporary Access Works)	Area no longer required as a result of refinements to the scheme
23.09.15	W006	Realignment of the order limits at Work No 12 (Water Abstraction Point)	Correction of error in the original location of the abstraction pipe
23.09.15	W006	Locations of coordinates referred to Schedule 9 of the DCO (Deemed Marine Licence) added	In response to request of the MMO
23.09.15	W006 W008	Indicative areas for Drive Pit and the Receive Shaft added	In response to request of Examining Authority in Rule 6 letter dated 22 July 2015

<b>Date submitted to PINS</b>	<b>Sheet No.</b>	<b>Change</b>	<b>Reason for change</b>
23.09.15	W009	Reduction of order limits of Work No 9B at Sewage Works (Temporary Access Works)	Area no longer required as a result of refinements to the scheme
27.11.15	W005	Reduction of order limits at Work No 6M (Temporary Access Works)	Area no longer required as a result of refinements to the scheme design
27.11.15	W008	Plot 18 shaded blue as Permanent Type 4 (Cable Easements Over Land)	In response to ExA's first written question Q15.10.1
27.11.15	All	Deletion of the word 'Temporary' from 'Temporary Access Works' in the Key	To reflect that certain passing places may be made up to permanent adoptable standard at the request of the local highway authority
17.02.16	Key	Amended to reflect changed order limits and include New Work No. 13	To reflect the extension of the Order limits for the additional mitigation land
17.02.16	5	Addition of New Work No. 13, extension of Work No. 4D and extension of redline	To reflect extension of the Order limits for the additional mitigation land and additional mitigation measures to be undertaken
17.02.16	7	Extension of Work No. 9A and reduction of Work No. 5A on strip between Lakes Farm and limit of deviation line	To reflect that this strip will only be used for construction access

**SCHEDULE OF AMENDMENTS TO ACCESS AND RIGHTS OF WAY PLANS (Doc Ref 2.3C)**

<b>Date submitted to PINS</b>	<b>Sheet No.</b>	<b>Change</b>	<b>Reason for change</b>
23.09.15	5	Reduction of the order limits at Work No 6Q (Temporary Access Works)	Work area no longer required as a result of refinements to the scheme design
23.09.15	8	Reduction of order limits of Work No 9B at Sewage Works (Temporary Access Works)	Work area no longer required as a result of refinements to the scheme design
27.11.15	4	Reduction of order limits at Work No 6M (Temporary Access Works)	Area no longer required as a result of refinements to the scheme design
27.11.15	All	Deletion of the word 'Temporary' from 'Temporary Street Works' in the Key	To reflect that certain passing places may be made up to permanent adoptable standard at the request of the local highway authority
17.02.16	5	Extension to redline	To reflect the extension of the Order limits
17.02.16	7	Extension of Work No. 9A on strip between Lakes Farm and limit of deviation line	To reflect that this strip will only be used for construction access

**SCHEDULE OF AMENDMENTS TO INDICATIVE SITE LAYOUT PLANS (Doc Ref 2.4B)**

<b>Date submitted to PINS</b>	<b>Sheet No.</b>	<b>Change</b>	<b>Reason for change</b>
23.09.15	All	Dimension text corrected to be legible when printed	In response to request of Examining Authority in Rule 6 letter dated 22 July 2015
23.09.15	All	Details of flood protection measures added for sensitive infrastructure, e.g. project offices, welfare cabins, generator compound and workshop	In response to request of the Environment Agency
23.09.15	All	Field numbers used in the bird surveys added	In response to request of Examining Authority in Rule 6 letter dated 22 July 2015
12.10.15	All	Addition of area for cathodic protection kiosks	In response to question 1.5 of the First Written Questions
23.09.15	Goxhill	Indicative location and height of the flood protection to the drive pit added	In response to request of Examining Authority in Rule 6 letter dated 22 July 2015
23.09.15	Goxhill	Realignment of the access off Chapel Field Road onto East Marsh Lane	Realignment of order limits at Work No 6Q (Temporary Access Works) on Works Plan W006 as a result of refinements to the scheme design
23.09.15	Paull	Location and height of the flood protection to the receive shaft added	In response to request of Examining Authority in Rule 6 letter dated 22 July 2015

**SCHEDULE OF AMENDMENTS TO TUNNEL LONG SECTIONS (Doc Ref 2.5A)**

<b>Date submitted to PINS</b>	<b>Sheet No.</b>	<b>Change</b>	<b>Reason for change</b>
23.09.15	Rev B	Transition points between Works 1A, 1B and 1C added	In response to request of Examining Authority in Rule 6 letter dated 22 July 2015

**SCHEDULE OF AMENDMENTS TO CROWN LAND PLANS (Doc Ref 2.7B)**

<b>Date submitted to PINS</b>	<b>Sheet/ Drawing No.</b>	<b>Change</b>	<b>Reason for change</b>
27.11.15	All	Boundary changed from dotted line to red line	In response to request of Examining Authority in Section 51 Advice dated 12 May 2015
27.11.15	2	Plots 62, 63 realigned to the south due to realignment of the order limits at Work No 12 (Water Abstraction Point)	Correction of error in the original location of the abstraction pipe
17.02.16	2	Red line amended to reflect changes to the Order limits	To reflect the extension to the Order limits for the additional mitigation land.