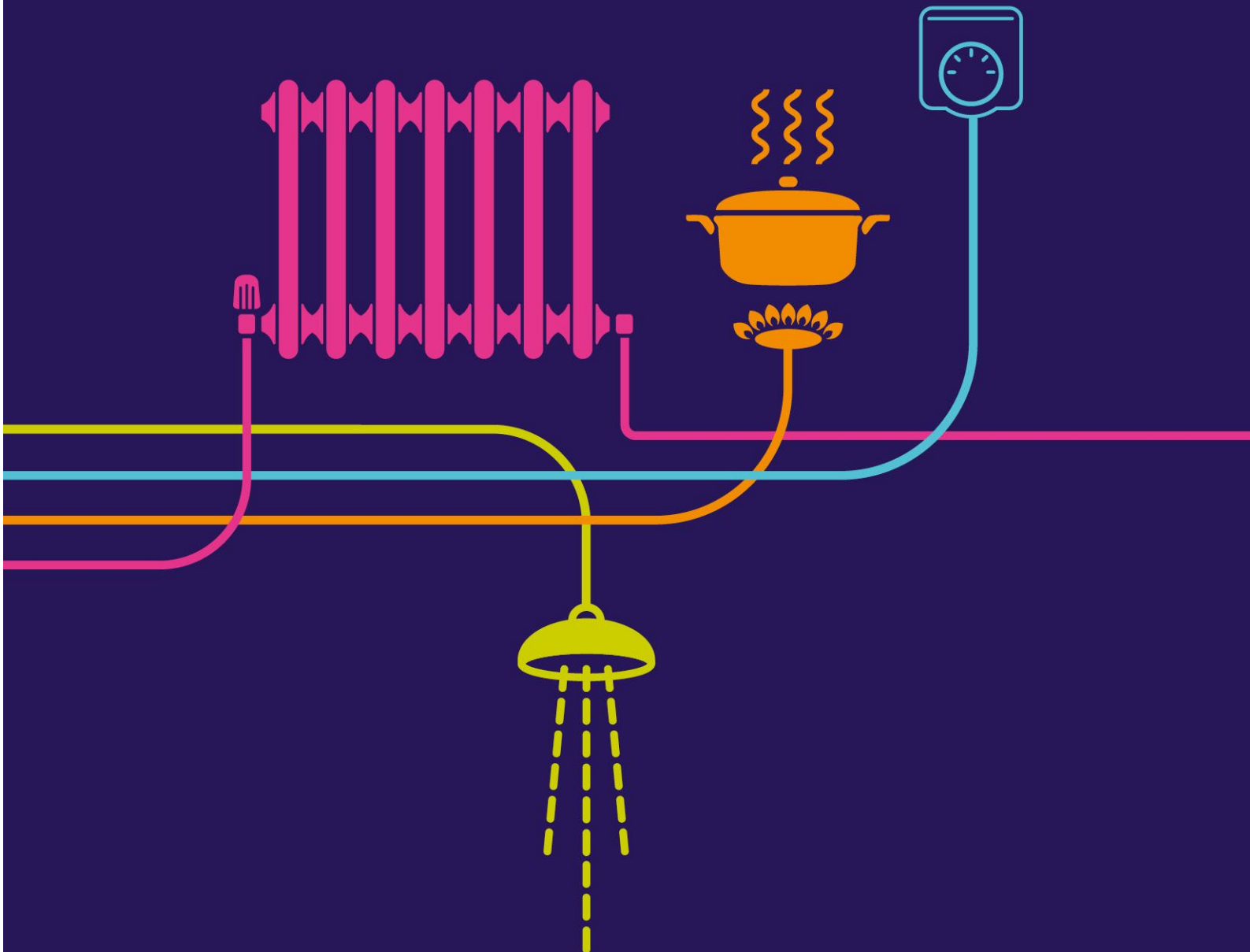


Master Version Control Document

River Humber Gas Pipeline Replacement Project



Document	Latest revision	Date latest document submitted	Document title
Volume 1 Application Information			
1.1	Latest	15 April 2015	Covering Letter
1.2	Latest	15 April 2015	Application Form
1.3	Latest	15 April 2015	Copies of Newspaper Notices
1.4	Latest	15 April 2015	Electronic Application Index
1.5	Latest	15 April 2015	Navigation Document
1.6	Superseded	23 September 2015	Master Version Control Document
1.6A	Superseded	12 October 2015	Master Version Control Document
1.6B	Superseded	02 November 2015	Master Version Control Document
1.6C	Superseded	27 November 2015	Master Version Control Document
1.6D	Superseded	22 December 2015	Master Version Control Document
1.6E	Superseded	13 January 2016	Master Version Control Document
1.6F	Superseded	17 February 2016	Master Version Control Document
1.6G	Latest	24 February 2016	Master Version Control Document
Volume 2 Plans/drawings			
2.1	Superseded	15 April 2015	Land Plans
2.1A	Superseded	23 September 2015	Land Plans
2.1B	Superseded	27 November 2015	Land Plans
2.1C	Latest	17 February 2016	Land Plans
2.2	Superseded	15 April 2015	Works Plans
2.2A	Superseded	23 September 2015	Works Plans
2.2B	Superseded	27 November 2015	Works Plans
2.2C	Latest	17 February 2016	Works Plans
2.3	Superseded	15 April 2015	Access and Rights of Way Plans
2.3A	Superseded	23 September 2015	Access and Rights of Way Plans
2.3B	Superseded	27 November 2015	Access and Rights of Way Plans
2.3C	Latest	17 February 2016	Access and Rights of Way Plans
2.4	Superseded	15 April 2015	Site Layout Plans
2.4A	Superseded	23 September 2015	Site Layout Plans
2.4B	Latest	12 October 2015	Site Layout Plans
2.5	Superseded	15 April 2015	Elevations (Tunnel Long Section)
2.5A	Latest	23 September 2015	Elevations (Tunnel Long Section)
2.6	Latest	15 April 2015	Images of the Works
2.7	Superseded	15 April 2015	Crown Land Plans
2.7A	Superseded	27 November 2015	Crown Land Plans
2.7B	Latest	17 February 2016	Crown Land Plans
2.8	Latest	15 April 2015	Environmental Features and Heritage Designations Plans (Part 1)
2.8	Latest	15 April 2015	Environmental Features and Heritage Designations Plans (Part 2)
2.8	Latest	15 April 2015	Environmental Features and Heritage Designations Plans (Part 3)
Volume 3 Draft Development Consent Order			
3.1	Superseded	15 April 2015	Draft Development Consent Order
3.1A	Superseded	02 November 2015	Draft Development Consent Order
3.1B	Superseded	27 November 2015	Draft Development Consent Order
3.1C	Superseded	13 January 2016	Draft Development Consent Order
3.1D	Latest	17 February 2016	Draft Development Consent Order
3.2	Superseded	15 April 2015	Explanatory Memorandum
3.2A	Latest	17 February 2016	Explanatory Memorandum
3.2.1	Latest	17 February 2016	Comparison between Explanatory Memorandum versions 3.2A and 3.2
3.3	Latest	15 April 2015	Comparison of DCO Against Model Provisions
3.4	Superseded	02 November 2015	Comparison between DCO Versions 3.1A and 3.1
3.4A	Superseded	27 November 2015	Comparison between DCO Versions 3.1B and 3.1A

3.4B	Superseded	13 January 2016	Comparison between DCO Versions 3.1C and 3.1B
3.4C	Latest	17 February 2016	Comparison between DCO Versions 3.1D and 3.1C
Volume 4 Compulsory Acquisition Information			
4.1	Superseded	15 April 2015	Statement of Reasons
4.1A	Latest	24 February 2016	Statement of Reasons
4.1.1	Latest	24 February 2016	Comparison between Statement of Reasons versions 4.1A and 4.1
4.2	Latest	15 April 2015	Funding Statement
4.3	Superseded	15 April 2015	Book of Reference (Parts 1 - 5)
4.3A	Superseded	23 September 2015	Book of Reference (Parts 1 - 5)
4.3B	Superseded	27 November 2015	Book of Reference (Parts 1 - 5)
4.3C	Latest	17 February 2016	Book of Reference (Parts 1 - 5)
4.4	Superseded	23 September 2015	Schedule of Variation to Book of Reference 4.3B
4.4A	Superseded	27 November 2015	Schedule of Variation to Book of Reference 4.3A
4.4B	Latest	17 February 2016	Schedule of Variation to Book of Reference 4.3B
Volume 5 Reports Statements			
5.1.	Latest	15 April 2015	Consultation Report
5.1.1	Latest	15 April 2015	Consultation Report - Appendicies Part 1
5.1.2	Latest	15 April 2015	Consultation Report - Appendicies Part 2
5.2	Latest	15 April 2015	Flood Risk Assessment
5.2.1	Latest	23 September 2015	Flood Risk Assessment Addendum
5.3	Latest	15 April 2015	Statement of Statutory Nuisance
5.4	Latest	15 April 2015	Habitats Regulations Assessment Part 1
5.4	Latest	15 April 2015	Habitats Regulations Assessment Part 2
5.4.1	Superseded	23 September 2015	HRA Screening Matrix (updates appendix 3 of Habitats Regulations Assessment)
5.4.1A	Latest	27 November 2015	HRA Screening Matrix (updates appendix 3 of Habitats Regulations Assessment)
5.4.2	Superseded	23 September 2015	HRA Screening Matrix (updates appendix 3 of Habitats Regulations Assessment) - Comparison between document 5.4 and 5.4.1
5.4.2A	Latest	27 November 2015	HRA Screening Matrix (updates appendix 3 of Habitats Regulations Assessment) - Comparison between document 5.4.1 and 5.4.1A
5.5	Latest	15 April 2015	Details of other Consents and Licences
Volume 6 Environmental Statement			
6.1	Latest	15 April 2015	Introduction
6.2	Latest	15 April 2015	Scheme Description
6.3	Latest	15 April 2015	Design Iterations and Alternatives Considered
6.3.1	Latest	15 April 2015	Appendix 3.1 Strategic Options Report
6.3.2	Latest	15 April 2015	Appendix 3.2 Alternatives - Route Corridor Investigation Study
6.3.3	Latest	15 April 2015	Appendix 3.3 Alternatives - Crossing Options Report
6.4	Latest	15 April 2015	EIA Methodology and Construction Environmental Management
6.4.1	Latest	15 April 2015	Appendix 4.1 PINS Scoping Opinion Comments
6.4.2	Latest	15 April 2015	Appendix 4.2 Section 42 Consultation Comments
6.5	Latest	15 April 2015	Air Quality
6.5.1	Latest	15 April 2015	Appendix 5.1 Dust risk Assessment
6.6	Latest	15 April 2015	Cultural Heritage
6.6.1	Latest	15 April 2015	Appendix 6.1 Desk-Based Assessment
6.6.2	Latest	15 April 2015	Appendix 6.2 Aerial Photograph Analysis at Paull
6.6.3	Latest	15 April 2015	Appendix 6.3 Geophysical Surveys Undertaken at Paull
6.6.4	Latest	15 April 2015	Appendix 6.4 Geophysical surveys Undertaken at Goxhill
6.6.5	Latest	15 April 2015	Appendix 6.5 Southend Bypass Geophysical Survey
6.7	Latest	15 April 2015	Ecology and Nature Conservation
6.7.1	Latest	15 April 2015	Appendix 7.1 Technical Appendix
6.7.2	Latest	15 April 2015	Appendix 7.2 Potentially Excepted Information
6.8	Latest	15 April 2015	Geology and Soils
6.8.1	Latest	15 April 2015	Appendix 8.1 Environmental Agency and Local Authority Responses
6.8.2	Latest	15 April 2015	Appendix 8.2 Desk Study Report Plan 1
6.8.2	Latest	15 April 2015	Appendix 8.2 Desk Study Report Plan 2
6.8.2	Latest	15 April 2015	Appendix 8.2 Desk Study Report Plan 3

6.8.3	Latest	15 April 2015	Appendix 8.3 Ground Investigation Report
6.8.3.1	Latest	12 October 2015	Appendix 8.3 Addendum - Phase I Test Results and Factual Report Volume 1
6.8.3.2	Latest	12 October 2015	Appendix 8.3 Addendum - Phase I Test Results and Factual Report Volume 2
6.8.3.3	Latest	12 October 2015	Appendix 8.3 Addendum - Phase I Test Results and Factual Report Volume 3
6.8.3.4	Latest	12 October 2015	Appendix 8.3 Addendum - Phase I Test Results and Factual Report Volume 4
6.8.3.5	Latest	12 October 2015	Appendix 8.3 Addendum - Phase I Test Results and Factual Report Volume 5
6.8.3.6	Latest	12 October 2015	Appendix 8.3 Addendum - Phase I Test Results and Factual Report Volume 6
6.8.3.7	Latest	12 October 2015	Appendix 8.3 Addendum - Phase I Test Results and Factual Report Volume 7
6.8.3.8	Latest	12 October 2015	Appendix 8.3 Addendum - Phase I Test Results and Factual Report Volume 8
6.8.3.9	Latest	12 October 2015	Appendix 8.3 Addendum - Phase I Test Results and Factual Report Volume 9
6.8.3.10	Latest	12 October 2015	Appendix 8.3 Addendum - Phase I Test Results and Factual Report Volume 10
6.8.3.11	Latest	02 November 2015	Appendix 8.3 Addendum - Phase II Test Results and Factual Report
6.8.4	Latest	15 April 2015	Appendix 8.4 Paull Holme Strays Investigation Report
6.8.5	Latest	15 April 2015	Appendix 8.5 Chalk Report
6.8.6	Latest	15 April 2015	Appendix 8.6 Geophysical Survey Report 1
6.8.6	Latest	15 April 2015	Appendix 8.6 Geophysical Survey Report 2
6.8.6	Latest	15 April 2015	Appendix 8.6 Geophysical Survey Report 3
6.8.7	Latest	15 April 2015	Appendix 8.7 Information Relating to Stoneledge Field Investigation
6.8.8	Latest	15 April 2015	Appendix 8.8 Responses from Lincolnshire Environmental Records Centre East Yorkshire RIGS Group
6.8.9	Latest	15 April 2015	Appendix 8.9 Unexploded Ordnance Report
6.9	Latest	15 April 2015	Landscape and Visual Amenity
6.10	Latest	15 April 2015	Noise and Vibration
6.10.1	Latest	15 April 2015	Appendix 10.1 Noise Monitoring Installation Sheets and Time History
6.10.2	Latest	15 April 2015	Appendix 10.2 Noise Model Inputs
6.10.3	Latest	15 April 2015	Appendix 10.3 Noise Model Outputs
6.11	Latest	15 April 2015	Socio-Economics and Land Use
6.11.1	Latest	15 April 2015	Appendix 11.1 Agricultural Land Survey
6.12	Latest	15 April 2015	Traffic and Transport
6.13	Latest	15 April 2015	Water Resources
6.13.1	Latest	15 April 2015	Appendix 13.1 Water Framework Directive Assessment
6.13.2	Superseded	15 April 2015	Appendix 13.2 Initial Site Water Management Plan
6.13.2A	Latest	13 January 2016	Appendix 13.2 Initial Site Water Management Plan
6.13.2.1	Latest	13 January 2016	Comparison between Initial Site Water Management Plan versions 6.13.2 and 6.13.2A
6.13.3	Latest	15 April 2015	Appendix 13.3 Hydrogeological Impact Assessment
6.13.3.1	Latest	12 October 2015	Appendix 13.3 Addendum - Mini-Pumping Test Results and Factual Report
6.13.3.2	Latest	12 October 2015	Appendix 13.3 Addendum Report to Hydrogeological Impact Assessment
6.14	Latest	15 April 2015	Cumulative Effects
6.15	Latest	15 April 2015	Glossary
6.16	Latest	15 April 2015	Screening Opinions
6.17	Latest	15 April 2015	Scoping Opinion
6.18	Latest	15 April 2015	EIA Regulations Publicity Requirements
6.19	Latest	15 April 2015	Non-Technical Summary
Volume 7 Other Documents			
7.1	Latest	15 April 2015	Planning Statement
7.2	Latest	15 April 2015	Transport Assessment
7.2.1	Superseded	15 April 2015	Initial Traffic Management Plan
7.2.1A	Latest	02 November 2015	Initial Traffic Management Plan
7.2.2	Latest	27 November 2015	Initial Traffic Management Plan - Comparison between versions 7.2.1 and 7.2.1A
7.3	Superseded	15 April 2015	Initial Construction Environmental Management Plan
7.3A	Superseded	02 November 2015	Initial Construction Environmental Management Plan
7.3B	Superseded	27 November 2015	Initial Construction Environmental Management Plan
7.3C	Superseded	13 January 2016	Initial Construction Environmental Management Plan
7.3D	Latest	17 February 2016	Initial Construction Environmental Management Plan
7.3.1	Superseded	02 November 2015	Initial Construction Environmental Management Plan - Comparison between versions 7.3 and 7.3A

7.3.2	Superseded	27 November 2015	Initial Construction Environmental Management Plan - Comparison between versions 7.3A and 7.3B
7.3.3	Superseded	13 January 2016	Initial Construction Environmental Management Plan - Comparison between versions 7.3B and 7.3C
7.3.4	Latest	17 February 2016	Initial Construction Environmental Management Plan - Comparison between versions 7.3C and 7.3D
7.4	Latest	15 April 2015	Need Case
7.5	Latest	15 April 2015	Additional Information for Specific Types of Infrastructure (Regulation 6(4))
7.6	Latest	15 April 2015	Drainage Report
7.7	Superseded	15 April 2015	Environmental Mitigation Commitments Document
7.7A	Superseded	23 September 2015	Environmental Mitigation Commitments Document
7.7B	Superseded	02 November 2015	Environmental Mitigation Commitments Document
7.7C	Superseded	27 November 2015	Environmental Mitigation Commitments Document
7.7D	Superseded	13 January 2016	Environmental Mitigation Commitments Document
7.7E	Latest	17 February 2016	Environmental Mitigation Commitments Document
7.7.1	Superseded	23 September 2015	Environmental Mitigation Commitments Document - Comparison between versions 7.7 and 7.7A
7.7.2	Superseded	02 November 2015	Environmental Mitigation Commitments Document - Comparison between versions 7.7A and 7.7B
7.7.3	Superseded	27 November 2015	Environmental Mitigation Commitments Document - Comparison between versions 7.7B and 7.7C
7.7.4	Superseded	13 January 2016	Environmental Mitigation Commitments Document - Comparison between versions 7.7C and 7.7D
7.7.5	Latest	17 February 2016	Environmental Mitigation Commitments Document - Comparison between versions 7.7D and 7.7E
7.8	Superseded	15 April 2015	Schedule of Progress on Voluntary Negotiations
7.8A	Superseded	23 September 2015	Schedule of Progress on Voluntary Negotiations
7.8B	Superseded	02 November 2015	Schedule of Progress on Voluntary Negotiations
7.8C	Superseded	27 November 2015	Schedule of Progress on Voluntary Negotiations
7.8D	Superseded	13 January 2016	Schedule of Progress on Voluntary Negotiations
7.8E	Latest	17 February 2016	Schedule of Progress on Voluntary Negotiations
7.9	Superseded	15 April 2015	Statement of Common Ground Schedule
7.9A	Superseded	23 September 2015	Statement of Common Ground Schedule
7.9B	Superseded	02 November 2015	Statement of Common Ground Schedule
7.9C	Superseded	27 November 2015	Statement of Common Ground Schedule
7.9D	Superseded	13 January 2016	Statement of Common Ground Schedule
7.9E	Latest	17 February 2016	Statement of Common Ground Schedule

Volume 8 Examination Submissions

8.1.1	Superseded	23 September 2015	Draft SOCG with the Environment Agency
8.1.1A	Superseded	02 November 2015	Draft SOCG with the Environment Agency
8.1.1B	Latest	13 January 2016	Signed SOCG with the Environment Agency
8.1.2	Superseded	23 September 2015	Draft SOCG with North Lincolnshire Council
8.1.2A	Superseded	02 November 2015	Draft SOCG with North Lincolnshire Council
8.1.2B	Latest	17 February 2016	Signed SOCG with North Lincolnshire Council
8.1.2.1	Superseded	02 November 2015	Draft SOCG with North Lincolnshire Council (Highways Matters)
8.1.2.1A	Latest	17 February 2016	Signed SOCG with North Lincolnshire Council (Highways Matters)
8.1.3	Superseded	23 September 2015	Draft SOCG with East Riding of Yorkshire Council
8.1.3A	Latest	12 October 2015	Signed SOCG with East Riding of Yorkshire Council
8.1.4	Superseded	23 September 2015	Draft SOCG with Natural England
8.1.4A	Superseded	02 November 2015	Draft SOCG with Natural England
8.1.4B	Latest	17 February 2016	Signed SOCG with Natural England
8.1.5	Superseded	23 September 2015	Draft SOCG with the Marine Management Organisation
8.1.5A	Latest	13 January 2016	Signed SOCG with the Marine Management Organisation
8.1.6	Superseded	23 September 2015	Draft SOCG with the RSPB
8.1.6A	Superseded	02 November 2015	Draft SOCG with the RSPB
8.1.6B	Latest	17 February 2016	Signed SOCG with RSPB
8.1.7	Superseded	23 September 2015	Draft SOCG with the Lincolnshire Wildlife Trust
8.1.7A	Latest	12 October 2015	Signed SOCG with the Lincolnshire Wildlife Trust
8.1.8	Superseded	23 September 2015	Draft SOCG with the Yorkshire Wildlife Trust
8.1.8A	Latest	13 January 2016	Signed SOCG with the Yorkshire Wildlife Trust
8.1.9	Superseded	23 September 2015	SOCG with Historic England
8.1.9A	Latest	12 October 2015	Signed SOCG with Historic England
8.1.10	Superseded	23 September 2015	Draft SOCG with Goxhill Parish Council and North Lincolnshire Council

8.1.10A	Superseded	02 November 2015	Draft SOCG with Goxhill Parish Council
8.1.10B	Latest	17 February 2016	Signed SOCG with Goxhill Parish Council
8.1.11	Latest	23 September 2015	SOCG with North East Lindsay Drainage Board
8.1.12	Latest	23 September 2015	SOCG with South Holderness Internal Drainage Board
8.1.13	Superseded	23 September 2015	Draft SOCG with Anglian Water
8.1.13A	Latest	24 February 2016	Signed SOCG with Anglian Water
8.1.14	Superseded	23 September 2015	Draft SOCG with Centrica
8.1.14A	Latest	17 February 2016	Signed SOCG with Centrica
8.1.15	Superseded	23 September 2015	Draft SOCG with Kingston Comms [SoCG not required - protective provisions in Order]
8.1.16	Latest	23 September 2015	Draft SOCG with Yorkshire Water [SoCG not required - see email to PINS dated 16/12/2015 (REP5-015)]
8.1.17	Superseded	23 September 2015	Draft SOCG with Network Rail
8.1.17A	Superseded	27 November 2015	Draft SOCG with Network Rail [SoCG not required - protective provisions and asset protection agreement being negotiated between parties]
8.1.18	Superseded	23 September 2015	Draft SOCG with Northern Powergrid
8.1.18A	Latest	17 February 2016	Signed SOCG with Northern Powergrid
8.2	Latest	23 September 2015	Summary of Bird Survey Data
8.3	Latest	23 September 2015	Tunnel Long Section with Limits of Deviation
8.4	Latest	23 September 2015	Deadline 1 Covering letter 23 September 2015
8.5	Superseded	23 September 2015	Schedule of Amendments to Plans
8.5A	Superseded	02 November 2015	Schedule of Amendments to DCO and Plans
8.5B	Superseded	27 November 2015	Schedule of Amendments to DCO and Plans
8.5C	Superseded	13 January 2016	Schedule of Amendments to DCO and Plans
8.5D	Latest	17 February 2016	Schedule of Amendments to DCO and Plans
8.6	Superseded	23 September 2015	ES Errata and Amendments Document
8.6A	Superseded	12 October 2015	ES Errata and Amendments Document
8.6B	Superseded	02 November 2015	ES Errata and Amendments Document
8.6C	Latest	27 November 2015	ES Errata and Amendments Document
8.7	Latest	12 October 2015	Deadline 2 Covering letter 12 October 2015
8.8	Latest	12 October 2015	Comments on Relevant Representations
8.9	Latest	12 October 2015	Responses to ExA's First Written Questions
8.9.1	Latest	12 October 2015	Annexure 1 to Response to First Written Questions - Q4.10 Pond Location Plan
8.9.2	Latest	12 October 2015	Annexure 2 to Response to First Written Questions - Q5.5 Areas Plan
8.9.3	Latest	12 October 2015	Annexure 3 to Response to First Written Questions - Q10.1 Written Scheme of Archaeological Investigation
8.9.4	Latest	12 October 2015	Annexure 4 to Response to First Written Questions - Q8.34 Summary of Traffic Mitigation Assessments
8.9.5	Superseded	12 October 2015	Annexure 5 to Response to First Written Questions - Q14.1 Hierarchy of Plans
8.9.5A	Latest	27 November 2015	Annexure 5 to Response to First Written Questions - Q14.1 Hierarchy of Plans
8.9.6	Latest	02 November 2015	Annexure 6 to Response to First Written Questions - Q2.3 Indicative Programme
8.9.7	Latest	02 November 2015	Annexure 7 to Response to First Written Questions - Q4.7 Updated Risk Register
8.10	Latest	02 November 2015	Deadline 3 Covering Letter 2 November 2015
8.11	Latest	02 November 2015	Comments on Written Representations
8.12	Latest	02 November 2015	Comments on Local Impact Reports
8.13	Latest	02 November 2015	Comments on Responses to First Written Questions
8.14	Latest	27 November 2015	Deadline 4 Covering Letter 27 November 2015
8.15	Latest	27 November 2015	Responses to Comments on Documents Received at Deadline 3
8.16	Latest	27 November 2015	Written Summary of Oral Case at Hearings on 17 & 18 November 2015
8.17	Latest	27 November 2015	Hearing Action Checklist 17 & 18 November 2015
8.17.1	Superseded	27 November 2015	Annexure 1 to Hearing Action Checklist - Action 1 HSE/MAH Consultation Note
8.17.1A	Latest	22 December 2015	Annexure 1 to Hearing Action Checklist - Action 1 HSE/MAH Consultation Note
8.17.2	Latest	27 November 2015	Annexure 2 to Hearing Action Checklist - Action 2 Traffic & Waste Summary
8.17.3	Latest	27 November 2015	Annexure 3 to Hearing Action Checklist - Action 2 HGV Noise Clarification Note
8.17.4	Latest	27 November 2015	Annexure 4 to Hearing Action Checklist - Action 3 Construction Presentation
8.17.5	Latest	27 November 2015	Annexure 5 to Hearing Action Checklist - Action 7 HEPS Correspondence
8.17.6	Latest	27 November 2015	Annexure 6 to Hearing Action Checklist - Actions 18 & 19 - Technical Note on NLC Traffic Proposals
8.17.7	Latest	27 November 2015	Annexure 7 to Hearing Action Checklist - DCO Action 6 Redline Reduction Plans
8.18	Latest	22 December 2015	Deadline 5 Covering Letter 22 December 2015
8.19	Latest	22 December 2015	Responses to ExA's Second Written Questions

8.19.1	Latest	22 December 2015	Annexure 1 to Response to Second Written Questions - Q3 Responses to Goxhill Parish Council
8.20	Latest	13 January 2016	Deadline 6 Covering letter 13 January 2016
8.21	Latest	13 January 2016	Comments on Responses to Second Written Questions
8.22	Latest	13 January 2016	Response to Rule 17 Letter dated 7 January 2016 and Request for Non-Material Change
8.23	Latest	15 January 2016	Response to Rule 17 Letter dated 15 January 2016
8.24	Latest	29 January 2016	Comments on Responses to Rule 17 Request dated 15 January 2016
8.25	Latest	17 February 2016	Deadline 7 Covering Letter 17 February 2016
8.26	Latest	17 February 2016	Applicant's Comments on ExA's draft DCO
8.27	Latest	17 February 2016	Joint Position Statement on Provision of Permanent Highway Works
8.28	Latest	17 February 2016	Position Statement on Negotiations with ABP and Crown Estate (Section 135 consent)
8.29	Latest	17 February 2016	Responses to Rule 17 Request dated 1 February 2016
8.30	Latest	17 February 2016	Summary of Consultation on Non-Material Change for Mitigation Land
8.31	Latest	17 February 2016	Archaeological Mitigation Strategy
8.32	Latest	24 February 2016	Deadline 8 Covering Letter 24 February 2016
8.33	Latest	24 February 2016	Comments on Responses to ExA draft DCO
8.34	Latest	24 February 2016	Comments on DDM Agriculture Responses to Rule 17 Letters
8.35	Latest	24 February 2016	Position Statement on Representations Received
8.36	Latest	24 February 2016	Refined Master Version Control Document