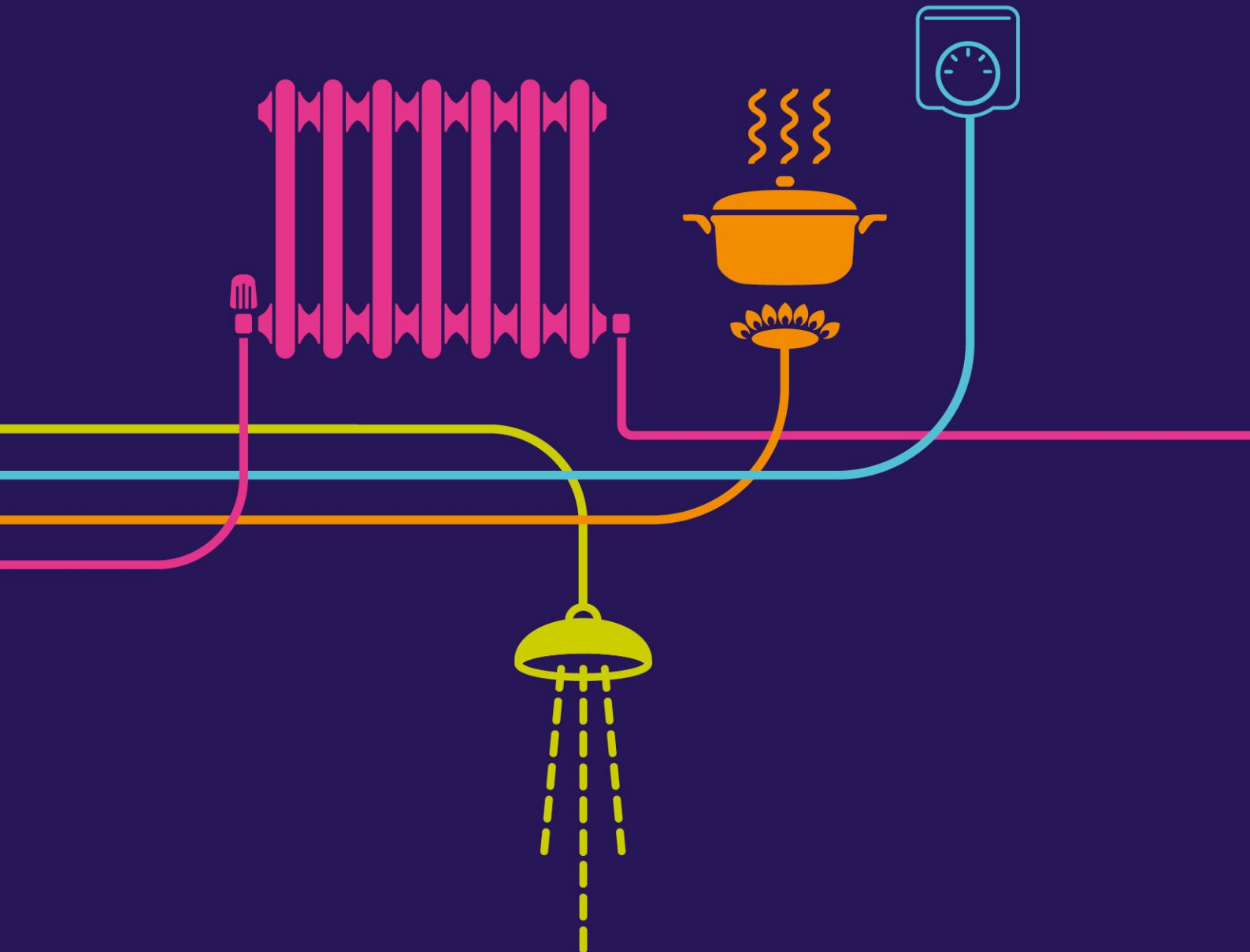


Master Version Control Document

River Humber Gas Pipeline Replacement Project



Document	Latest revision*	Date latest document submitted	Document title	* If blank, submitted document has not been revised
Volume 1 Application Information				
1.1	Latest	15 April 2015	Covering Letter	
1.2	Latest	15 April 2015	Application Form	
1.3	Latest	15 April 2015	Copies of Newspaper Notices	
1.4	Latest	15 April 2015	Electronic Application Index	
1.5	Latest	15 April 2015	Navigation Document	
1.6	Superseded	23 September 2015	Master Version Control Document	
1.6A	Superseded	12 October 2015	Master Version Control Document	
1.6B	Latest	02 November 2015	Master Version Control Document	
Volume 2 Plans/drawings				
2.1	Superseded	15 April 2015	Land Plans	
2.1A	Latest	23 September 2015	Land Plans	
2.2	Superseded	15 April 2015	Works Plans	
2.2A	Latest	23 September 2015	Works Plans	
2.3	Superseded	15 April 2015	Access and Rights of Way Plans	
2.3A	Latest	23 September 2015	Access and Rights of Way Plans	
2.4	Superseded	15 April 2015	Site Layout Plans	
2.4A	Superseded	23 September 2015	Site Layout Plans	
2.4B	Latest	12 October 2015	Site Layout Plans	
2.5	Superseded	15 April 2015	Elevations (Tunnel Long Section)	
2.5A	Latest	23 September 2015	Elevations (Tunnel Long Section)	
2.6	Latest	15 April 2015	Images of the Works	
2.7	Latest	15 April 2015	Crown Land Plans	
2.8	Latest	15 April 2015	Environmental Features and Heritage Designations Plans (Part 1)	
2.8	Latest	15 April 2015	Environmental Features and Heritage Designations Plans (Part 2)	
2.8	Latest	15 April 2015	Environmental Features and Heritage Designations Plans (Part 3)	
Volume 3 Draft Development Consent Order				
3.1	Superseded	15 April 2015	Draft Development Consent Order	
3.1A	Latest	02 November 2015	Draft Development Consent Order	
3.2	Latest	15 April 2015	Explanatory Memorandum	
3.3	Latest	15 April 2015	Comparison of DCO Against Model Provisions	
3.4	Latest	02 November 2015	Comparison between DCO Versions 3.1 and 3.1A	
Volume 4 Compulsory Acquisition Information				
4.1	Latest	15 April 2015	Statement of Reasons	
4.2	Latest	15 April 2015	Funding Statement	
4.3	Superseded	15 April 2015	Book of Reference (Parts 1 - 5)	
4.3A	Latest	23 September 2015	Book of Reference (Parts 1 - 5)	
4.4	Latest	23 September 2015	Schedule of Variation to Book of Reference 4.3A	
Volume 5 Reports Statements				
5.1.	Latest	15 April 2015	Consultation Report	
5.1.1	Latest	15 April 2015	Consultation Report - Appendices Part 1	
5.1.2	Latest	15 April 2015	Consultation Report - Appendices Part 2	
5.2	Latest	15 April 2015	Flood Risk Assessment	

5.2.1	Latest	23 September 2015	Flood Risk Assessment Addendum
5.3	Latest	15 April 2015	Statement of Statutory Nuisance
5.4	Latest	15 April 2015	Habitats Regulations Assessment Part 1
5.4	Latest	15 April 2015	Habitats Regulations Assessment Part 2
5.4.1	Latest	23 September 2015	HRA Screening Matrix (updates appendix 3 of Habitats Regulations Assessment)
5.4.2	Latest	23 September 2015	HRA Screening Matrix (updates appendix 3 of Habitats Regulations Assessment) - Comparison between document 5.4 and 5.4.1
5.5	Latest	15 April 2015	Details of other Consents and Licences
Volume 6 Environmental Statement			
6.1	Latest	15 April 2015	Introduction
6.2	Latest	15 April 2015	Scheme Description
6.3	Latest	15 April 2015	Design Iterations and Alternatives Considered
6.3.1	Latest	15 April 2015	Appendix 3.1 Strategic Options Report
6.3.2	Latest	15 April 2015	Appendix 3.2 Alternatives - Route Corridor Investigation Study
6.3.3	Latest	15 April 2015	Appendix 3.3 Alternatives - Crossing Options Report
6.4	Latest	15 April 2015	EIA Methodology and Construction Environmental Management
6.4.1	Latest	15 April 2015	Appendix 4.1 PINS Scoping Opinion Comments
6.4.2	Latest	15 April 2015	Appendix 4.2 Section 42 Consultation Comments
6.5	Latest	15 April 2015	Air Quality
6.5.1	Latest	15 April 2015	Appendix 5.1 Dust risk Assessment
6.6	Latest	15 April 2015	Cultural Heritage
6.6.1	Latest	15 April 2015	Appendix 6.1 Desk-Based Assessment
6.6.2	Latest	15 April 2015	Appendix 6.2 Aerial Photograph Analysis at Paull
6.6.3	Latest	15 April 2015	Appendix 6.3 Geophysical Surveys Undertaken at Paull
6.6.4	Latest	15 April 2015	Appendix 6.4 Geophysical surveys Undertaken at Goxhill
6.6.5	Latest	15 April 2015	Appendix 6.5 Southend Bypass Geophysical Survey
6.7	Latest	15 April 2015	Ecology and Nature Conservation
6.7.1	Latest	15 April 2015	Appendix 7.1 Technical Appendix
6.7.2	Latest	15 April 2015	Appendix 7.2 Potentially Excepted Information
6.8	Latest	15 April 2015	Geology and Soils
6.8.1	Latest	15 April 2015	Appendix 8.1 Environmental Agency and Local Authority Responses
6.8.2	Latest	15 April 2015	Appendix 8.2 Desk Study Report Plan 1
6.8.2	Latest	15 April 2015	Appendix 8.2 Desk Study Report Plan 2
6.8.2	Latest	15 April 2015	Appendix 8.2 Desk Study Report Plan 3
6.8.3	Latest	15 April 2015	Appendix 8.3 Ground Investigation Report
6.8.3.1	Latest	12 October 2015	Appendix 8.3 Addendum - Phase I Test Results and Factual Report Volume 1
6.8.3.2	Latest	12 October 2015	Appendix 8.3 Addendum - Phase I Test Results and Factual Report Volume 2
6.8.3.3	Latest	12 October 2015	Appendix 8.3 Addendum - Phase I Test Results and Factual Report Volume 3
6.8.3.4	Latest	12 October 2015	Appendix 8.3 Addendum - Phase I Test Results and Factual Report Volume 4
6.8.3.5	Latest	12 October 2015	Appendix 8.3 Addendum - Phase I Test Results and Factual Report Volume 5
6.8.3.6	Latest	12 October 2015	Appendix 8.3 Addendum - Phase I Test Results and Factual Report Volume 6
6.8.3.7	Latest	12 October 2015	Appendix 8.3 Addendum - Phase I Test Results and Factual Report Volume 7
6.8.3.8	Latest	12 October 2015	Appendix 8.3 Addendum - Phase I Test Results and Factual Report Volume 8
6.8.3.9	Latest	12 October 2015	Appendix 8.3 Addendum - Phase I Test Results and Factual Report Volume 9
6.8.3.10	Latest	12 October 2015	Appendix 8.3 Addendum - Phase I Test Results and Factual Report Volume 10
6.8.3.11	Latest	02 November 2015	Appendix 8.3 Addendum - Phase II Test Results and Factual Report
6.8.4	Latest	15 April 2015	Appendix 8.4 Paull Holme Strays Investigation Report

6.8.5	Latest	15 April 2015	Appendix 8.5 Chalk Report
6.8.6	Latest	15 April 2015	Appendix 8.6 Geophysical Survey Report 1
6.8.6	Latest	15 April 2015	Appendix 8.6 Geophysical Survey Report 2
6.8.6	Latest	15 April 2015	Appendix 8.6 Geophysical Survey Report 3
6.8.7	Latest	15 April 2015	Appendix 8.7 Information Relating to Stoneledge Field Investigation
6.8.8	Latest	15 April 2015	Appendix 8.8 Responses from Lincolnshire Environmental Records Centre East Yorkshire RIGS Group
6.8.9	Latest	15 April 2015	Appendix 8.9 Unexploded Ordnance Report
6.9	Latest	15 April 2015	Landscape and Visual Amenity
6.10	Latest	15 April 2015	Noise and Vibration
6.10.1	Latest	15 April 2015	Appendix 10.1 Noise Monitoring Installation Sheets and Time History
6.10.2	Latest	15 April 2015	Appendix 10.2 Noise Model Inputs
6.10.3	Latest	15 April 2015	Appendix 10.3 Noise Model Outputs
6.11	Latest	15 April 2015	Socio-Economics and Land Use
6.11.1	Latest	15 April 2015	Appendix 11.1 Agricultural Land Survey
6.12	Latest	15 April 2015	Traffic and Transport
6.13	Latest	15 April 2015	Water Resources
6.13.1	Latest	15 April 2015	Appendix 13.1 Water Framework Directive Assessment
6.13.2	Latest	15 April 2015	Appendix 13.2 Initial Sight Water Management Plan
6.13.3	Latest	15 April 2015	Appendix 13.3 Hydrogeological Impact Assessment
6.13.3.1	Latest	12 October 2015	Appendix 13.3 Addendum - Mini-Pumping Test Results and Factual Report
6.13.3.2	Latest	12 October 2015	Appendix 13.3 Addendum Report to Hydrogeological Impact Assessment
6.14	Latest	15 April 2015	Cumulative Effects
6.15	Latest	15 April 2015	Glossary
6.16	Latest	15 April 2015	Screening Opinions
6.17	Latest	15 April 2015	Scoping Opinion
6.18	Latest	15 April 2015	EIA Regulations Publicity Requirements
6.19	Latest	15 April 2015	Non-Technical Summary
Volume 7 Other Documents			
7.1	Latest	15 April 2015	Planning Statement
7.2	Latest	15 April 2015	Transport Assessment
7.2.1	Superseded	15 April 2015	Initial Traffic Management Plan
7.2.1A	Latest	02 November 2015	Initial Traffic Management Plan
7.3	Superseded	15 April 2015	Initial Construction Environmental Management Plan
7.3A	Latest	02 November 2015	Initial Construction Environmental Management Plan
7.3.1	Latest	02 November 2015	Initial Construction Environmental Management Plan - Comparison between versions 7.3 and 7.3A
7.4	Latest	15 April 2015	Need Case
7.5	Latest	15 April 2015	Additional Information for Specific Types of Infrastructure (Regulation 6(4))
7.6	Latest	15 April 2015	Drainage Report
7.7	Superseded	15 April 2015	Environmental Mitigation Commitments Document
7.7A	Superseded	23 September 2015	Environmental Mitigation Commitments Document
7.7B	Latest	02 November 2015	Environmental Mitigation Commitments Document
7.7.1	Superseded	23 September 2015	Environmental Mitigation Commitments Document - Comparison between versions 7.7 and 7.7A
7.7.2	Latest	02 November 2015	Environmental Mitigation Commitments Document - Comparison between versions 7.7A and 7.7B
7.8	Superseded	15 April 2015	Schedule of Progress on Voluntary Negotiations
7.8A	Superseded	23 September 2015	Schedule of Progress on Voluntary Negotiations
7.8B	Latest	02 November 2015	Schedule of Progress on Voluntary Negotiations

7.9	Superseded	15 April 2015	Statement of Common Ground Schedule
7.9A	Superseded	23 September 2015	Statement of Common Ground Schedule
7.9B	Latest	02 November 2015	Statement of Common Ground Schedule
Volume 8 Examination Submissions			
8.1.1	Superseded	23 September 2015	Draft SOCG with the Environment Agency
8.1.1A	Latest	02 November 2015	Draft SOCG with the Environment Agency
8.1.2	Superseded	23 September 2015	Draft SOCG with North Lincolnshire Council
8.1.2A	Latest	02 November 2015	Draft SOCG with North Lincolnshire Council
8.1.2.1	Latest	02 November 2015	Draft SOCG with North Lincolnshire Council (Highways Matters)
8.1.3	Superseded	23 September 2015	Draft SOCG with East Riding of Yorkshire Council
8.1.3A	Latest	12 October 2015	Signed SOCG with East Riding of Yorkshire Council
8.1.4	Superseded	23 September 2015	Draft SOCG with Natural England
8.1.4A	Latest	02 November 2015	Draft SOCG with Natural England
8.1.5	Latest	23 September 2015	Draft SOCG with the Marine Management Organisation
8.1.6	Superseded	23 September 2015	Draft SOCG with the RSPB
8.1.6A	Latest	02 November 2015	Draft SOCG with the RSPB
8.1.7	Superseded	23 September 2015	Draft SOCG with the Lincolnshire Wildlife Trust
8.1.7A	Latest	12 October 2015	Signed SOCG with the Lincolnshire Wildlife Trust
8.1.8	Latest	23 September 2015	Draft SOCG with the Yorkshire Wildlife Trust
8.1.9	Superseded	23 September 2015	SOCG with Historic England
8.1.9A	Latest	12 October 2015	Signed SOCG with Historic England
8.1.10	Superseded	23 September 2015	Draft SOCG with Goxhill Parish Council and North Lincolnshire Council
8.1.10A	Latest	02 November 2015	Draft SOCG with Goxhill Parish Council
8.1.11	Latest	23 September 2015	SOCG with North East Lindsay Drainage Board
8.1.12	Latest	23 September 2015	SOCG with South Holderness Internal Drainage Board
8.1.13	Latest	23 September 2015	Draft SOCG with Anglian Water
8.1.14	Latest	23 September 2015	Draft SOCG with Centrica
8.1.15	Latest	23 September 2015	Draft SOCG with Kingston Comms
8.1.16	Latest	23 September 2015	Draft SOCG with Yorkshire Water
8.1.17	Latest	23 September 2015	Draft SOCG with Network Rail
8.1.18	Latest	23 September 2015	Draft SOCG with Northern Powergrid
8.2	Latest	23 September 2015	Summary of Bird Survey Data
8.3	Latest	23 September 2015	Tunnel Long Section with Limits of Deviation
8.4	Latest	23 September 2015	Deadline 1 Covering letter 23 September 2015
8.5	Superseded	23 September 2015	Schedule of Amendments to Plans
8.5A	Latest	02 November 2015	Schedule of Amendments to DCO and Plans
8.6	Superseded	23 September 2015	ES Errata and Amendments Document
8.6A	Superseded	12 October 2015	ES Errata and Amendments Document
8.6B	Latest	02 November 2015	ES Errata and Amendments Document
8.7	Latest	12 October 2015	Deadline 2 Covering letter 12 October 2015
8.8	Latest	12 October 2015	Comments on Relevant Representations
8.9	Latest	12 October 2015	Responses to ExA's First Written Questions
8.9.1	Latest	12 October 2015	Annexure 1 to Response to First Written Questions - Q4.10 Pond Location Plan
8.9.2	Latest	12 October 2015	Annexure 2 to Response to First Written Questions - Q5.5 Areas Plan
8.9.3	Latest	12 October 2015	Annexure 3 to Response to First Written Questions - Q10.1 Written Scheme of Archaeological Investigation
8.9.4	Latest	12 October 2015	Annexure 4 to Response to First Written Questions - Q8.34 Summary of Traffic Mitigation Assessments
8.9.5	Latest	12 October 2015	Annexure 5 to Response to First Written Questions - Q14.1 Hierarchy of Plans

8.9.6	Latest	02 November 2015	Annexure 6 to Response to First Written Questions - Q2.3 Indicative Programme
8.9.7	Latest	02 November 2015	Annexure 7 to Response to First Written Questions - Q4.7 Updated Risk Register
8.10	Latest	02 November 2015	Deadline 3 Covering Letter 2 November 2015
8.11	Latest	02 November 2015	Comments on Written Representations
8.12	Latest	02 November 2015	Comments on Local Impact Reports
8.13	Latest	02 November 2015	Comments on Responses to First Written Questions