

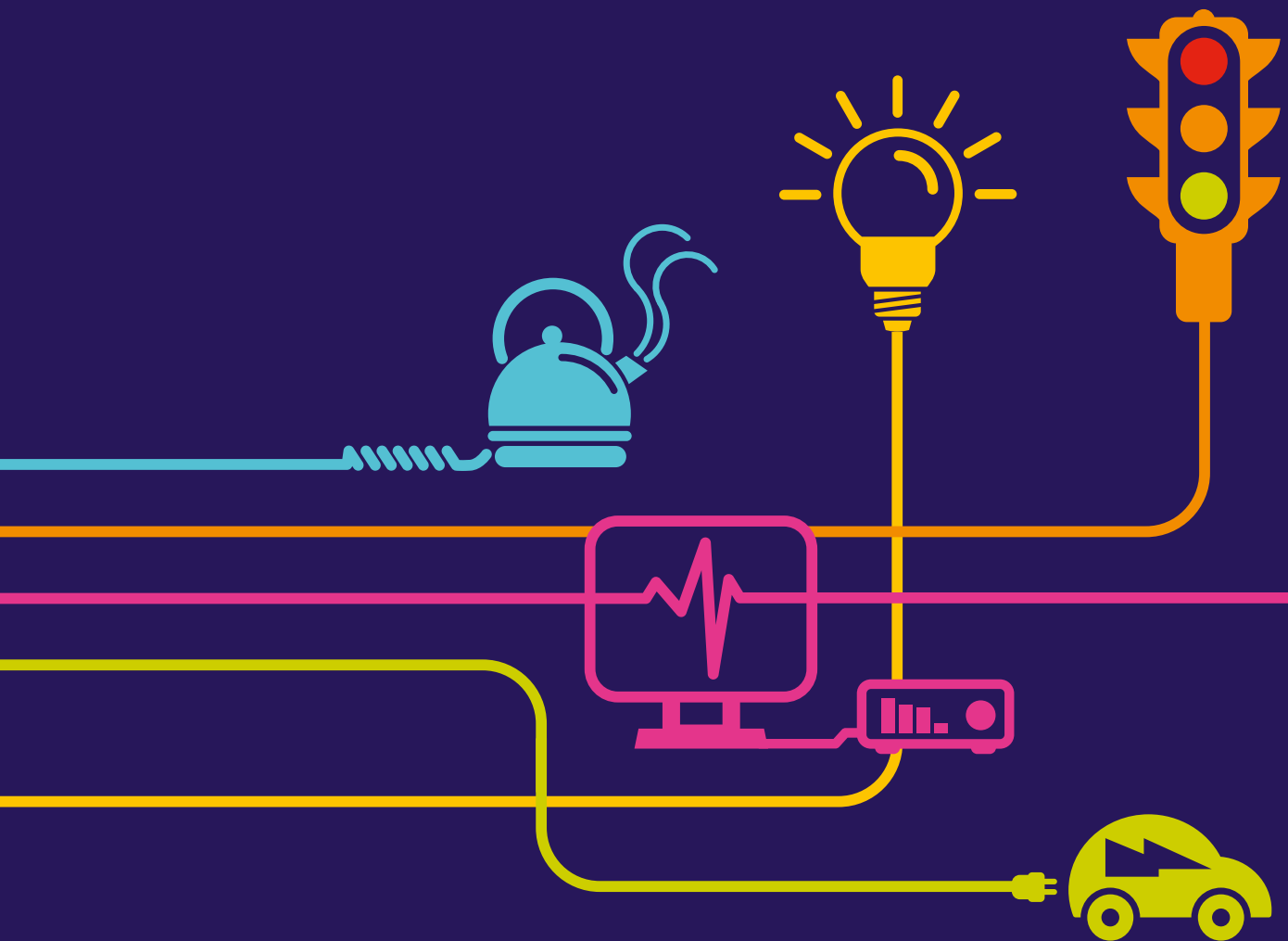
Environmental Statement Consolidated Errata and Changes

National Grid (Richborough Connection Project) Order

Regulation (5)(2)(q) of the

Infrastructure Planning (Applications: Prescribed Forms and Procedure)

Regulations 2009



Richborough Connection Project

Doc 5.2.1(A)

Environmental Statement Consolidated Errata and Changes Document

National Grid
National Grid House
Warwick Technology Park
Gallows Hill
Warwick
CV34 6DA

Final

September 2016

Page intentionally blank

| Document Control | | | |
|----------------------------|---|---------------|---|
| Document Properties | | | |
| Organisation | Amec Foster Wheeler | | |
| Author | Chris Prydderch | | |
| Approved by | Karen Wilson | | |
| Title | Environmental Statement Consolidated Errata and Changes | | |
| Document Reference | Doc 5.2.1(A) | | |
| Version History | | | |
| Date | Version | Status | Description/Changes |
| 14/7/16 | Issue 1 | Final | New document to capture errors/changes noted from First Written Questions |
| 08/09/16 | Issue 2, (A) | Final | Updated to capture errors/changes noted from Second Written Questions |
| | | | |
| | | | |

Page intentionally blank

Table of Contents

| | | |
|-----------|---|----------|
| 1. | ES ERRATA AND AMENDMENTS | 1 |
| 1.1 | Introduction | 1 |
| 1.2 | Timeline of Further Submissions to PINS | 1 |

Page intentionally blank

1. ES ERRATA AND AMENDMENTS

1.1 Introduction

- 1.1.1 This document (**Doc 5.2.1(A)**) has been prepared to detail errata in and amendments (including updates) to the Environmental Statement (ES) (Development Consent Order (DCO) Document Reference **Volume 5, Documents 5.1-5.4**) for the Richborough Connection Project (RCP), which was submitted as part of the DCO application in January 2016.
- 1.1.2 It is intended that during the Examination, further points of clarification/amendments which arise through (but not limited to) the Written Questions, Written Representations and the Issue Specific Hearings will be added to this document which would remain live throughout. It will be submitted at each of the prescribed Deadlines as set out by the Planning Inspectorate (PINS).
- 1.1.3 It will also detail any errors and omissions within the ES which have been identified throughout the Examination and provide corrections as necessary. This version (**Doc 5.2.1(A)**) updates and supersedes the version submitted at Deadline 2.

1.2 Timeline of Further Submissions to PINS

- 1.2.1 Since the submission of the ES and associated documents to PINS in January 2016, National Grid has prepared a number of addendums/updates. These documents have been submitted to PINS at Deadlines 2, 3 and 4 and are detailed at Table 1-1 below where they are relevant to **Volume 5** of the DCO submission. Where new documents would result in amendments to the original, details are set out in Table 1-2. In addition, Tables 1-2 and 1-3 also outline a list of errata noted in responding to the Examining Authority's (ExAs) first and second round of questions respectively.
- 1.2.2 Table 1-4 sets out errata and amendments noted in responding to points raised in 3rd Party Submissions at Deadline 3.

Table 1-1 Schedule of Additional Environmental Documents submitted to PINS Post-DCO Submission and during Examination

| DCO Document Reference Number | Document | Relationship to Original Document | Status |
|---|--|-----------------------------------|---|
| Deadline 1 – Tuesday 21 June 2016 | | | |
| 5.5.1 | Updated HRA matrices to inform the Report on the Implications for European Sites (RIES) Notification | Supplementary | Active : Clarifies Appendix A of Doc 5.5. |
| Deadline 2 – Thursday 14 July 2016 | | | |
| 5.4.3B (A) | 3B CONFIDENTIAL: Embedded Environmental Measures Schedule | Replacement | Replaced |
| 5.4.3B (A) | 3B Embedded Environmental Measures Schedule (Confidential Information Removed) | Replacement | Replaced |
| 5.4.3C (A) | 3C Construction Environmental Management Plan | Replacement | Replaced |
| 5.4.3F (A) | 3F Archaeological Mitigation Written Scheme of Investigation | Replacement | Replaced |
| 5.4.3I.1 | Arboricultural Impact Assessment Addendum | Supplementary | Replaced |
| 5.4.3J(A) | Indicative Construction Programme | Replacement | Replaced |
| 5.4.7C(A) | Visual Impact Assessment Tables | Replacement | Replaced |
| 5.4.14A (A) | 14A Land Contamination Desk Study | Replacement | Replaced |
| 8.8 | Noise and Vibration Management Plan | New document | Active |
| 8.9 | Additional Photomontages as Requested by the ExA | New and updated photomontages | Active |
| 8.10 | Guidelines for Pollution Prevention | New document | Active |

| DCO Document Reference Number | Document | Relationship to Original Document | Status |
|---|--|-----------------------------------|----------|
| 8.11 | Concept Mitigation Planting Plans | New document | Active |
| 8.12 | Proposed Access Routes for Construction, Dismantling and Maintenance | Supplementary | Active |
| Deadline 3 - Thursday 4 August 2016 | | | |
| 5.4.3E(A) | 3E CONFIDENTIAL: Biodiversity Mitigation Strategy | Replacement | Replaced |
| 5.4.3E(A) | 3E Biodiversity Mitigation Strategy | Replacement | Replaced |
| 5.4.3G(A) | 3G Construction Traffic Management Plan | Replacement | Replaced |
| 5.4.3H(A) | 3H Public Rights of Way Management Plan | Replacement | Replaced |
| 5.4.10A(A) | 10A Transport Assessment | Replacement | Replaced |
| 8.20 | Additional Verified Photomontage VP48 and Viewpoint Location Plan | New document | Active |
| Deadline 4 - Thursday 8 September 2016 | | | |
| 5.4.3C(B) | Construction Environmental Management Plan | Replacement | Replaced |
| 5.4.3I.1(A) | Arboricultural Impact Assessment Addendum | Replacement | Replaced |
| Deadline 5 - Friday 7 October 2016 | | | |
| | | | |
| | | | |
| Deadline 6 - Wednesday 26 October 2016 | | | |
| | | | |

Table 1-2 Schedule of Errata and Amendments noted in responding to PINs First Round of Questions

| PINS Qu. Ref | DCO Document Reference | Amendment/Clarification | Reason |
|--------------|---|---|---|
| 1.2.08 | 5.5 No Significant Effects Report | Tables 3.1 and 3.2 of the NSER have been updated to aid the ExA. | To respond to ExA comments in this question. |
| 1.2.12 | 5.5 No Significant Effects Report | Table 3.2 of the NSER has been updated to aid the ExA. | To respond to ExA comments in this question. |
| 1.2.39 | 5.4.3I Arboricultural Impact Assessment | Figures 31.2a-31.2u have been updated. | Colour changes to selected symbology have been made as requested by the Examining Authority (ExA). The updated plans are included in Doc 5.4.3I.1 . |
| 1.2.46 | Doc 4.15 sheet 5 of 8 and ES Figure 3.5 | Soil mounds to the west of the Westbere site compound were incorrectly shown. Doc 4.15 sheet 5 of 8 has been updated. | To respond to ExA comments in this question. |
| 1.2.48 | 5.4.3C Construction Environmental Management Plan | Para 4.2.5 of the CEMP has been updated to refer to Section 8 of the AIA to provide clarity over fencing proposals. | To respond to ExA comments in this question. |
| 1.2.54 | 5.2 ES Chapter 9 (Biodiversity) | Paragraph 9.1.5 should refer to "... (sites 11,15,17 and 19)...." | The paragraph incorrectly referred to(sites 12,16,18 and 20)... |
| 1.2.59 | 5.4.3B Embedded Environmental Measures Schedule and 5.4.3C Construction Environmental Management Plan | Updated to remove discrepancies between these two documents. | To respond to ExA comments in this question and also the Embedded Measures Schedule has been updated to reflect PINs request in Annex D of the Rule 8 letter. |

| PINS Qu. Ref | DCO Document Reference | Amendment/Clarification | Reason |
|--------------|---|--|--|
| 1.2.66 | 5.4.3B Embedded Environmental Measures Schedule | The entry for pylon PC10 (page 8) has been amended to remove reference to management of woodland of community value as this was included in error. | To respond to ExA comments in this question. |
| 1.4.06 | 5.2 ES Chapter 3 | <p>Clarification on Limits of Deviation in Paragraph 3.1.15 of the ES. As shown in Appendix G submitted at Deadline 2:</p> <ul style="list-style-type: none"> • Gantry to PC1 (not PC 2 as in the ES) • PC 4-6 (not PC 3-6 as in the ES) <p>The LoDs as shown on the ES Figures and used in the assessments are correct.</p> | To respond to ExA question |
| 1.6.03 | 5.4.3C Construction Environmental Management Plan | Revised wording in Sections 4.5 and 4.6 has been included to clarify the provision of mitigation for crossing boundaries and floodbanks. | To respond to ExA comments in this question. |
| 1.6.09 | 5.4.3B Embedded Environmental Measures Schedule | Correct reference to pylon PC 16 (not PC15) on page 11 | To respond to ExA comments in this question. |
| 1.7.03 | 5.2: ES Chapter 6 (Landscape) | Para 6.9.50 should read... 'The River stour is of regional value and has medium <i>susceptibility</i> to change, which combine to give a medium sensitivity. | To respond to ExA comments in this question. |

| PINS Qu. Ref | DCO Document Reference | Amendment/Clarification | Reason |
|--------------|--|--|--|
| | | Para 6.9.5 should be amended to replace the wording 'locally characteristic feature' with the words ' <i>regionally distinctive</i> feature' | |
| 1.7.04 | 5.2: ES Chapter 6 (Landscape) | Reference to 'high, moderate or low, at paragraph 6.5.3 is incorrect terminology. This should read.... 'landscapes or their component parts may be valued at the community, local, national or international levels'. | To respond to ExA comments in this question. |
| 1.7.10 | 5.3.7 ES Figures Chapter 7 (Visual) | Updates to ES Figures 7.13a-7.13g to include additional information requested by the ExA. The updated figures are 7.16a-7.16g in Appendix L. | To respond to ExA comments in this question. |
| 1.7.17 | 5.7.3C Visual Impact Assessment Tables | Clarification that receptor A1. H37b has been mixed up with A1. H37a in the Visual Impact Assessment tables (Doc 5.4.7C) which have been updated, and their locations as shown on Figures 7.4b, Figures 7.10b and 7.13b (Doc 5.3.7). | To respond to ExA comments in this question. |
| 1.7.18 | 5.7.3C Visual Impact Assessment Tables | The assessment of receptor B1.B7 was included in the Tables (Doc 5.4.7C) but was inadvertently cropped during the process of converting the document to a pdf file. Doc 5.4.7C(A) has been updated. | To respond to ExA comments in this question. |

| PINS Qu. Ref | DCO Document Reference | Amendment/Clarification | Reason |
|---------------------|--|--|--|
| 1.7.19 | 5.7.3C Visual Impact Assessment Tables | Clarification of assessment for footpath receptor C1.F2 in updated Doc 5.4.7C(A). | To respond to ExA comments in this question. |
| 1.7.20 | 5.7.3C Visual Impact Assessment Tables | Clarification of assessment for receptors D1.B3 and D1.H2 in updated Doc 5.4.7C(A). | To respond to ExA comments in this question. |
| 1.7.21 | 5.7.3C Visual Impact Assessment Tables | Clarification of assessments provided in an updated extract from Doc 5.4.7C submitted as Appendix M. (In addition Doc 5.4.7C(A) has been submitted. | To respond to ExA comments in this question. |
| 1.7.24 | 5.7.3C Visual Impact Assessment Tables | Clarification that receptor A1. H37b has a 'high' susceptibility to change not 'medium' and this is updated in Doc 5.4.7C(A). Inclusion of distance measures for visual receptors in Sections A, C and D and for B2.6, B3.1 and B3.2 in the updated Doc 5.4.7C(A) | To respond to ExA comments in this question. |
| 1.2.25 | 5.7.3C Visual Impact Assessment Tables | Clarification that the susceptibility to change for visual receptors A1.C1 in Doc 5.4.7C should have been 'high' and not 'medium'. | To respond to ExA comments in this question. |
| 1.7.27 | 5.7.3A Visual Methodology | Clarification given in response to this question that Paragraph 7.3.12 of Doc 5.4.7A does not capture all instances where views have been assigned regional value. | To respond to ExA comments in this question. |

| PINS Qu. Ref | DCO Document Reference | Amendment/Clarification | Reason |
|---------------------|---|---|--|
| | | No update to 5.4.7A is proposed. | |
| 1.7.58 | 5.4.3B Embedded Environmental Measures Schedule | The reference to Landscape Mitigation Strategy on pages 11 and 20 of Doc 5.4.3B are errors which have been addressed. | To respond to ExA comments in this question. |
| 1.8.06 | 5.2: ES Chapter 11 (Noise and Vibration) | The asterisk in Table 11.5 should be a '2' and represents locations where noise levels have been adjusted for distance from the measurement location to the receptor location. | To respond to ExA comments in this question. |
| 1.8.19 | 5.2: ES Chapter 11 (Noise and Vibration) | Receptor '9 Shalloak Road' in Table 11.26 should be '9A Shalloak Road' | To respond to ExA comments in this question. |
| 1.10.15 | 5.4.10A Transport Assessment | Clarification that Paragraph 1.8.1 of the TA should state: 'Highway improvements will be made to junctions, access points and sections of road to facilitate construction traffic movements'. | To respond to ExA comments in this question. |
| 1.10.17 | 5.4.10A Transport Assessment | Clarification that where Appendix B is referenced in the TA (e.g para 6.7.2) this should refer to Annex 10A.2. | To respond to ExA comments in this question. |
| 1.10.26 | 5.4.10A Transport Assessmen | Clarification that where Appendix C is referenced in the TA (e.g para 5.8.1) this should refer to Annex 10A.3. | To respond to ExA comments in this question. |
| 1.12.07 | 5.3.3 ES Figures Chapter 3 | Clarification regarding ES figures showing | To respond to ExA comments in this |

| PINS Qu. Ref | DCO Document Reference | Amendment/Clarification | Reason |
|---------------------|---|---|--|
| | | construction and maintenance access routes. Provision of a new set of plans to more clearly show the necessary information. | question. |
| 1.12.16 | 5.4.3C Construction Environmental Management Plan | Reference was made to Requirement 14 when this should be Requirement 6. This has been updated. | To respond to ExA comments in this question. |

Table 1-3 Schedule of Errata and Amendments noted in responding to PINs Second Round of Questions

| PINS Qu. Ref | DCO Document Reference | Amendment/Clarification | Reason |
|--------------|---|--|--|
| 2.2.19 | 5.4.3I.1(A) Arboricultural Impact Assessment Addendum | Revised Figures 31.3a to 31.3v, mistakenly not submitted to the ExA in response to Q1.2.39, now included as part of Doc 5.4.3I.1(A). | To respond to ExA comments in this question. |
| 2.7.03 | 5.4.6A: Landscape Methodology | The document should have included a methodology for assessment of regional value. This was acknowledged by the Applicant in response to Q1.7.02 but not included in Doc 5.2.1 at that time. | To respond to ExA comments in this question. |
| 2.7.10 | 5.4.7C(A) Visual Impact Tables | New receptor (identified during the Accompanied Site Inspection on 25 July 2016) allocated the reference A1.H66 and added to page 31 of Doc 5.4.7C(A). The replacement page is included in Appendix I of Doc 8.26.1. | To respond to ExA comments in this question. |
| 2.7.10 | 5.3.7 Environmental Statement – Chapter 7 Figures | Sheet 2 of 7 in each of Figure 7.4 Visual Receptors within 1km of the Proposed Development, Figure 7.10b Significance of Effects on Visual Receptors within 1km of the Proposed Development – During Construction and Figure 7.13b Significance of Effects on Visual Receptors within 1km of the Proposed Development - During Operation have been updated to include the new receptor A1.H66 as referenced above. The replacement page is included in Appendix I of Doc 8.26.1. | To respond to ExA comments in this question. |
| 2.8.4 | 8.8 Noise and Vibration Management Plan | Clarification that the same mitigation options will apply at 1 Shalloak Road as set out for the other receptors where the 60dB(A) noise threshold is exceeded. Table 7 of the Noise and Vibration Management Plan (NVMP, Doc 8.8) which will be amended to reflect this and any further | To respond to ExA comments in this question. |

| PINS Qu. Ref | DCO Document Reference | Amendment/Clarification | Reason |
|---------------------|--|---|--|
| | | amendments, if required, for a future deadline. | |
| 2.12.15 | 5.4.3C(B) Construction Environmental Management Plan | Inset 3C.2.1 and Table 3C.2.3 have been updated to include details of the Agricultural Liaison Officer role | To respond to ExA comments in this question. |

Table 1-4 Schedule of Errata and Amendments noted in responding to points raised in 3rd Party Submissions at Deadline 3

| DCO Document Reference | Amendment/Clarification | Reason |
|---|---|--|
| 8.30 Applicant's Response to points raised in 3rd Party Submissions at Deadline 3 | Where the visual receptor reference B1.H18 appears in the Chapter 7 of the Environmental Statement (Doc 5.2) it refers to the residence at the Old Post Office, and it is noted that this visual receptor reference should have read B1.H18a. | To respond to comments raised in 3 rd party submission at Deadline 3. |

